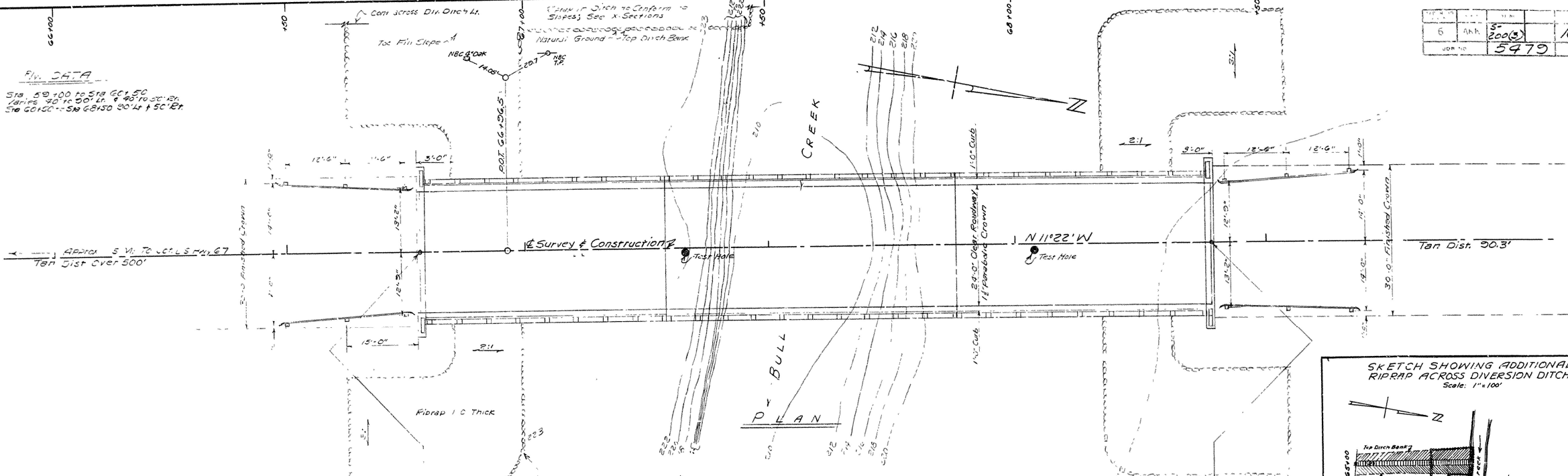
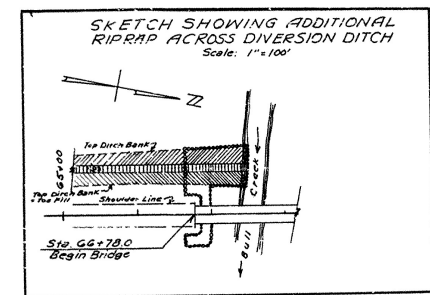


**PIV DATA**  
 Sta. 50+00 to Sta. 60+50  
 Limits 40' to 50' in. & 40' to 50' in.  
 Sta. 60+50 to Sta. 68+50 20' in. & 50' in.



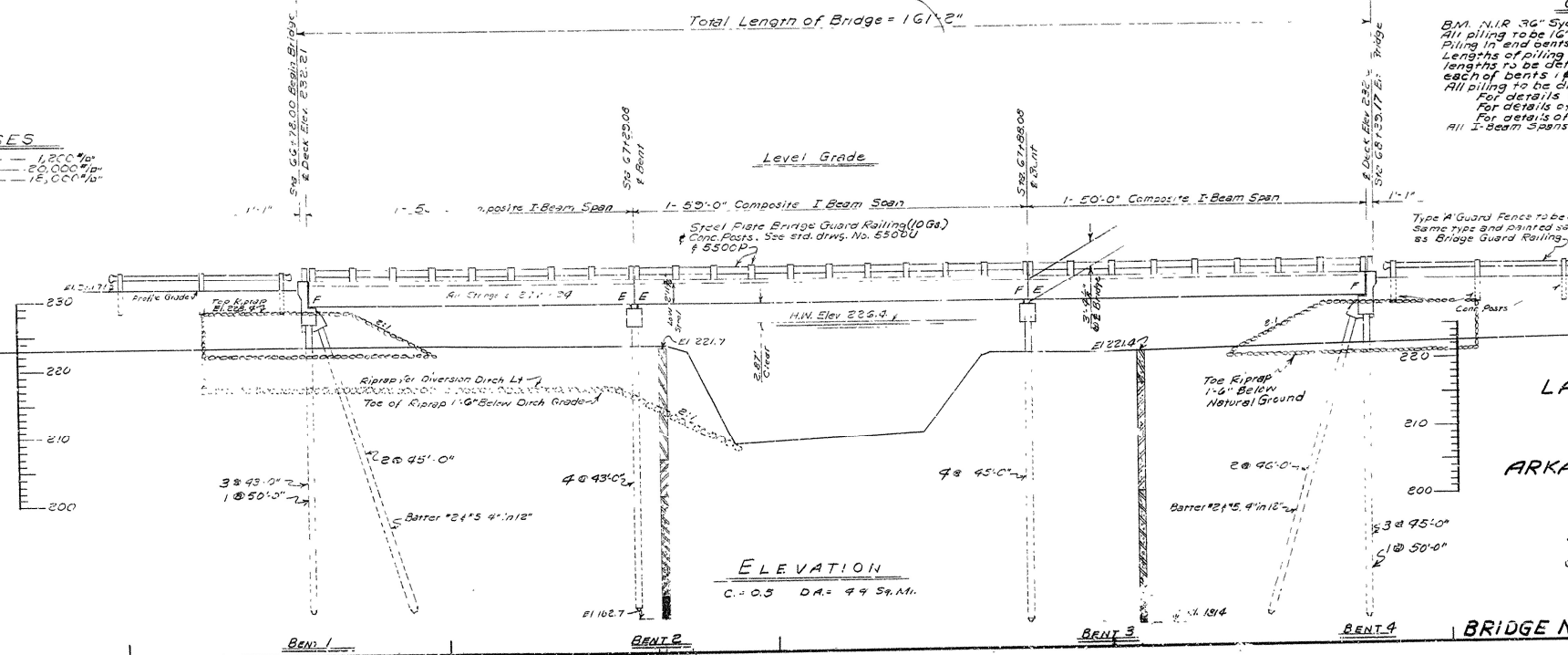
**NOTE**  
 Contractor to remove existing Bridge located approx 65' downstream, consisting of 2 timber pile bents, 1-23' I-Beam span, 1-50' Pony Truss Span, 1-14' I-Beam span and 2 Abutments. This work to be done in accordance with SP-1007



BOOKING LOG

**UNIT STRESSES**  
 Class 5 Concrete--(n=10)-- 1,200 psi  
 Reinforcing Steel-- 20,000 psi  
 Structural Steel-- 15,000 psi

**GENERAL NOTES**  
 B.M. N.R. 36" Sycamore 55' At Sta. 68+20 Elev. 225.06  
 All piling to be 16" Octagonal Precast Concrete Piles.  
 Piling in end bents shall be driven after embankment is in place.  
 Lengths of piling shown are for estimating purposes only. Actual lengths to be determined in the field. Drive one 50' pile in each of bents 1 & 4.  
 All piling to be driven to a minimum bearing capacity of 36 tons per pile.  
 For details of Superstructure, see Std. Drawg. 5500U & 5500P.  
 For details of Substructure, see: Std. Drawg. 5500V.  
 For details of Concrete Piles, see: Std. Drawg. 2382.  
 All I-Beam Spans are Regular Spans.



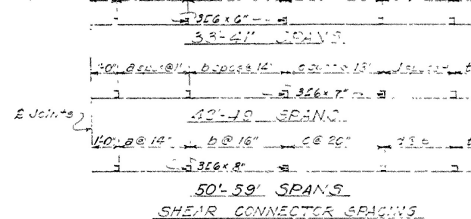
**LAYOUT OF BRIDGE OVER BULL CREEK WHITE COUNTY ROUTE 31 SEC. 9 ARKANSAS STATE HIGHWAY COMMISSION LITTLE ROCK, ARK.**

Drawn By: J.B.C. Date: 4-30-59

Checked By: Date: \_\_\_\_\_

Scale: 1"=10'





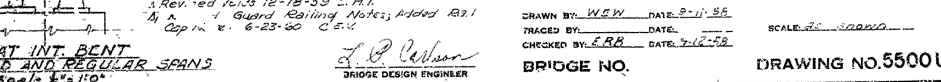
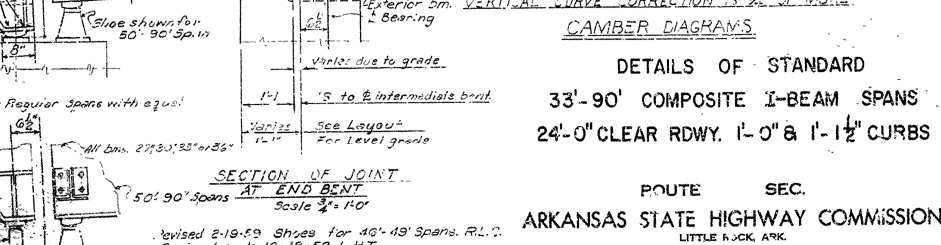
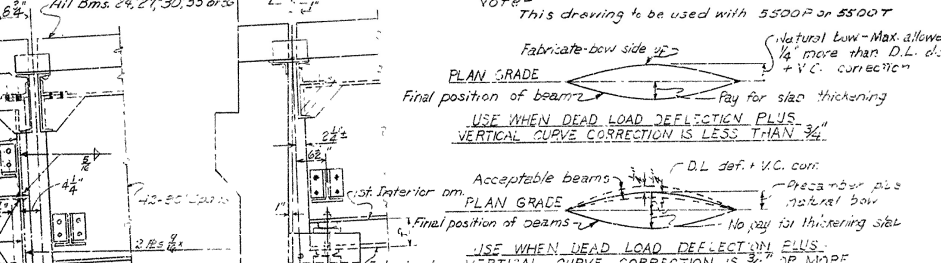
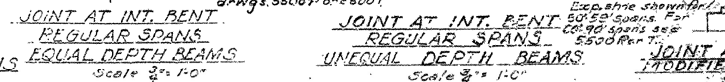
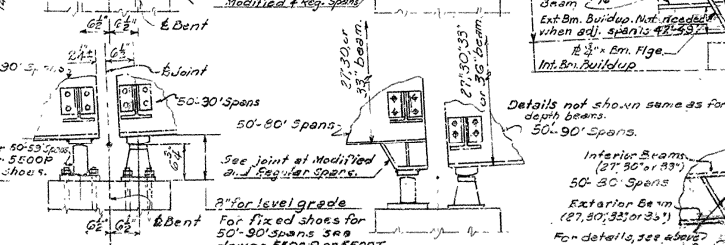
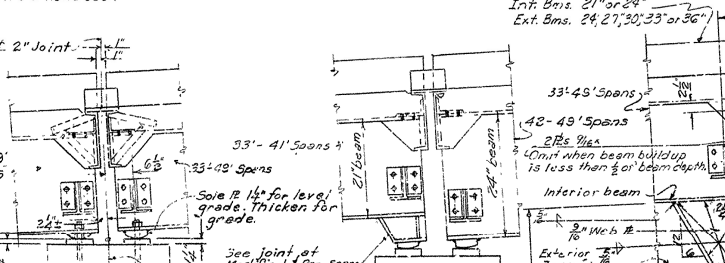
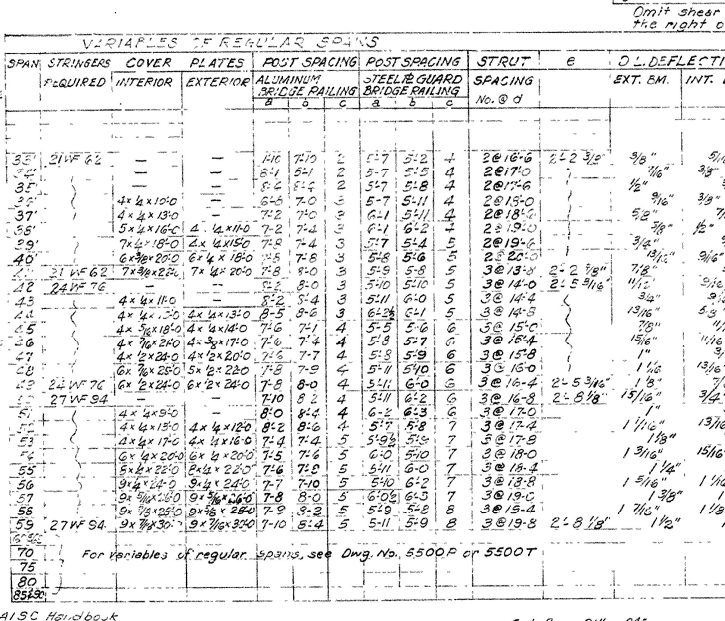
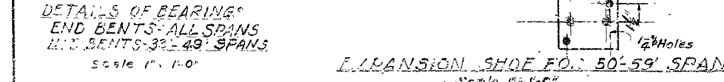
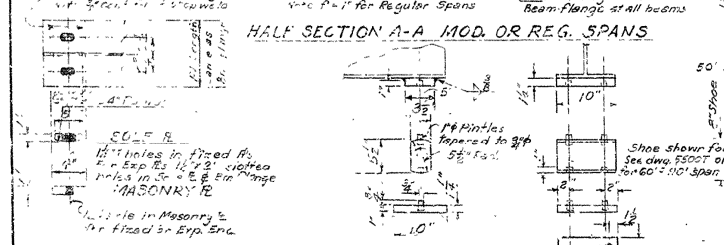
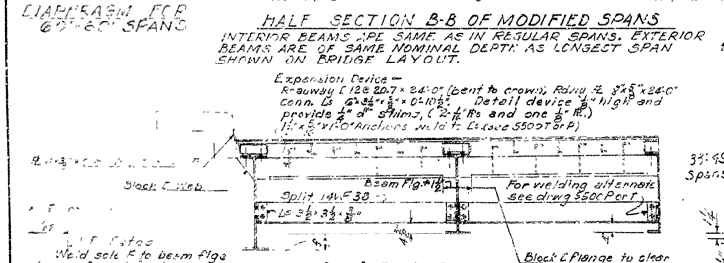
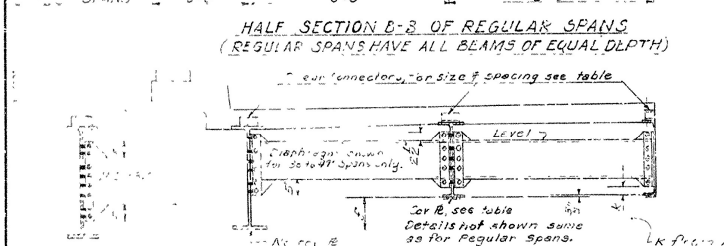
the right of heavy line

MODIFY SPANS  
OUTSIDE BEAMS

NO. OF REINFORCING BARS PER SPAN

For bar bending diagrams, see drawing 5500P or 5500T

D.L. DEFLECTION		MODIFY SPANS OUTSIDE BEAMS										NO. OF REINFORCING BARS PER SPAN									
EXT. SPAN	INT. SPAN	VALUES C = F										For bar bending diagrams, see drawing 5500P or 5500T									
		24WF	27WF94	30WF108	33WF130	36WF150	*F.S.	*S-32	*S-42	*S-55	*S-6*	*S-32	*S-33	*S-33	*S-33	*S-33	*S-33	*S-33	*S-33	*S-33	
3/8"	9/16"	2 1/2"	6 3/4"	9 3/4"	10 7/8"	1-5 9/16"	58	26	56	56	58	12	4								
1/2"	3/4"						60	29	58	58		12									
5/8"	7/8"						62	30	62	60	62	12									
7/8"	1 1/8"						64	31	64	62	64	12									
1 1/8"	1 1/4"						66	33	66	64	66	12									
1 1/4"	1 3/8"						68	33	68	66	68	12									
1 3/8"	1 1/2"						70	34	70	68	70	12									
1 1/2"	1 5/8"						72	35	72	70	72	12									
1 5/8"	1 3/4"						74	36	74	72	74	12									
1 3/4"	1 7/8"						76	37	76	74	76	12									
1 7/8"	2"						78	38	78	76	78	12									
2"	2 1/8"						80	39	80	78	80	12									
2 1/8"	2 1/4"						82	40	82	80	82	12									
2 1/4"	2 3/8"						84	41	84	82	84	12									
2 3/8"	2 1/2"						86	42	86	84	86	12									
2 1/2"	2 5/8"						88	43	88	86	88	12									
2 5/8"	2 3/4"						90	44	90	88	90	12									
2 3/4"	2 7/8"						92	45	92	90	92	12									
2 7/8"	3"						94	46	94	92	94	12									
3"	3 1/8"						96	47	96	94	96	12									
3 1/8"	3 1/4"						98	48	98	96	98	12									
3 1/4"	3 3/8"						100	49	100	98	100	12									
3 3/8"	3 1/2"						102	50	102	100	102	12									
3 1/2"	3 5/8"																				
3 5/8"	3 3/4"																				
3 3/4"	3 7/8"																				
3 7/8"	4"																				
4"	4 1/8"																				
4 1/8"	4 1/4"																				
4 1/4"	4 3/8"																				
4 3/8"	4 1/2"																				
4 1/2"	4 5/8"																				
4 5/8"	4 3/4"																				
4 3/4"	4 7/8"																				
4 7/8"	5"																				
5"	5 1/8"																				
5 1/8"	5 1/4"																				
5 1/4"	5 3/8"																				
5 3/8"	5 1/2"																				
5 1/2"	5 5/8"																				
5 5/8"	5 3/4"																				
5 3/4"	5 7/8"																				
5 7/8"	6"																				
6"	6 1/8"																				
6 1/8"	6 1/4"																				
6 1/4"	6 3/8"																				
6 3/8"	6 1/2"																				
6 1/2"	6 5/8"																				
6 5/8"	6 3/4"																				
6 3/4"	6 7/8"																				
6 7/8"	7"																				
7"	7 1/8"																				
7 1/8"	7 1/4"																				
7 1/4"	7 3/8"																				
7 3/8"	7 1/2"																				
7 1/2"	7 5/8"																				
7 5/8"	7 3/4"																				
7 3/4"	7 7/8"																				
7 7/8"	8"																				
8"	8 1/8"																				
8 1/8"	8 1/4"																				
8 1/4"	8 3/8"																				
8 3/8"	8 1/2"																				
8 1/2"	8 5/8"																				
8 5/8"	8 3/4"																				
8 3/4"	8 7/8"																				
8 7/8"	9"																				
9"	9 1/8"																				
9 1/8"	9 1/4"																				
9 1/4"	9 3/8"																				
9 3/8"	9 1/2"																				
9 1/2"	9 5/8"																				
9 5/8"	9 3/4"																				
9 3/4"	9 7/8"																				
9 7/8"	10"																				
10"	10 1/8"																				
10 1/8"	10 1/4"																				
10 1/4"	10 3/8"																				
10 3/8"	10 1/2"																				
10 1/2"	10 5/8"																				
10 5/8"	10 3/4"																				
10 3/4"	10 7/8"																				
10 7/8"	11"																				
11"	11 1/8"																				
11 1/8"	11 1/4"																				
11 1/4"	11 3/8"																				
11 3/8"	11 1/2"																				
11 1/2"	11 5/8"																				
11 5/8"	11 3/4"																				
11 3/4"	11 7/8"																				
11 7/8"	12"																				
12"	12 1/8"																				
12 1/8"	12 1/4"																				
12 1/4"	12 3/8"																				
12 3/8"	12 1/2"																				
12 1/2"	12 5/8"																				
12 5/8"	12 3/4"																				
12 3/4"	12 7/8"																				
12 7/8"	13"																				
13"	13 1/8"																				
13 1/8"	13 1/4"																				
13 1/4"	13 3/8"																				
13 3/8"	13 1/2"																				
13 1/2"	13 5/8"																				
13 5/8"	13 3/4"																				
13 3/4"	13 7/8"																				
13 7/8"	14"																				
14"	14 1/8"																				
14 1/8"	14 1/4"																				
14 1/4"	14 3/8"																				
14 3/8"	14 1/2"																				
14 1/2"	14 5/8"																				
14 5/8"	14 3/4"																				



Revise before Using