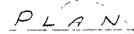


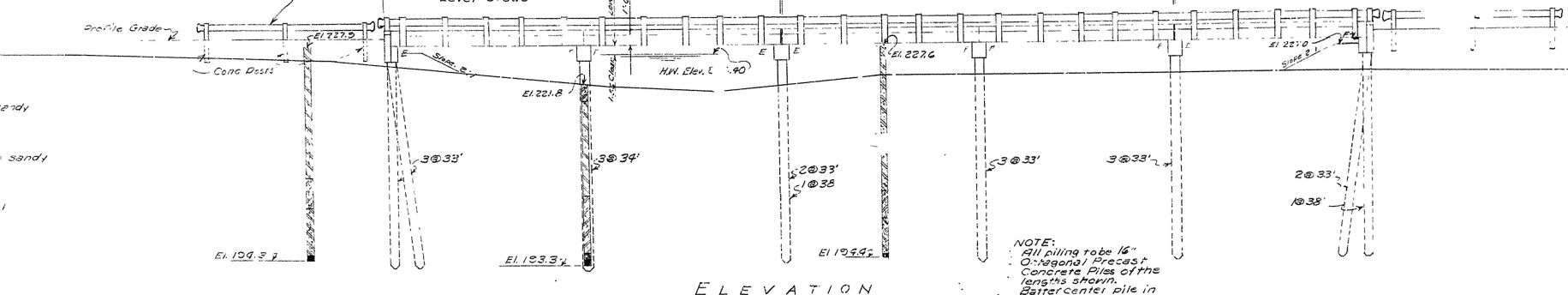
2

180 G-E'm
180 4-E'm



Total Length of Bridge = 155'-2"

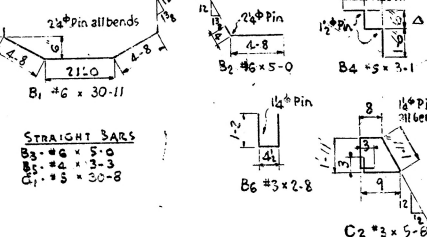
Type A Guard Fence to be of same
Type & painted same as Bridge Guard Railing.



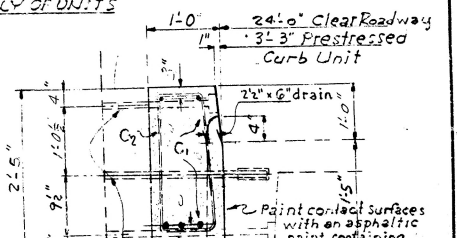
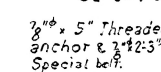
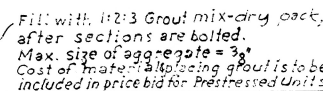
WHITE COUNTY
ROUTE 31 SEC. 4
ARKANSAS STATE HIGHWAY
COMMISSION

BRIDGE NO. 3318 DRAWG. NO. 10463

BEG. OR END
OF BRIDGE

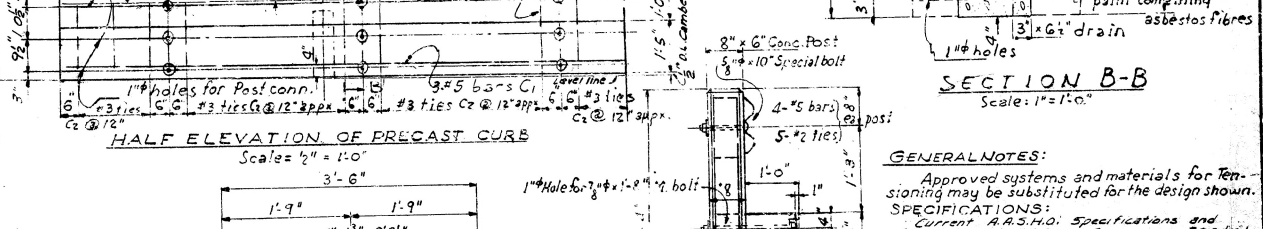


JOE No



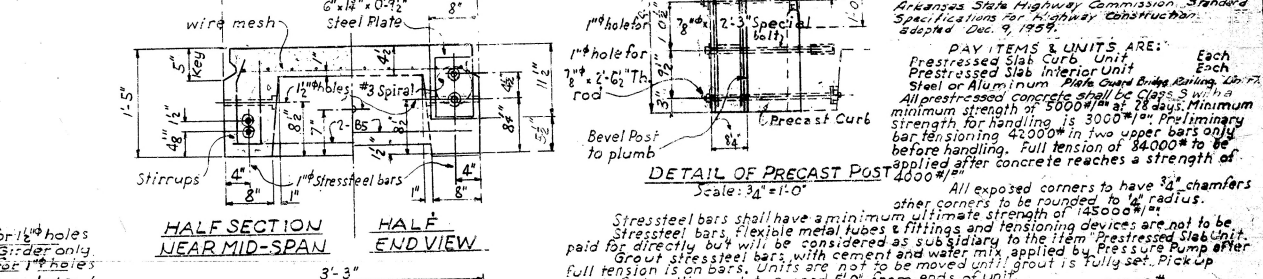
HALF SECTION A-A SHOWING STRESS STEEL ONLY

→ Symmetrical about this



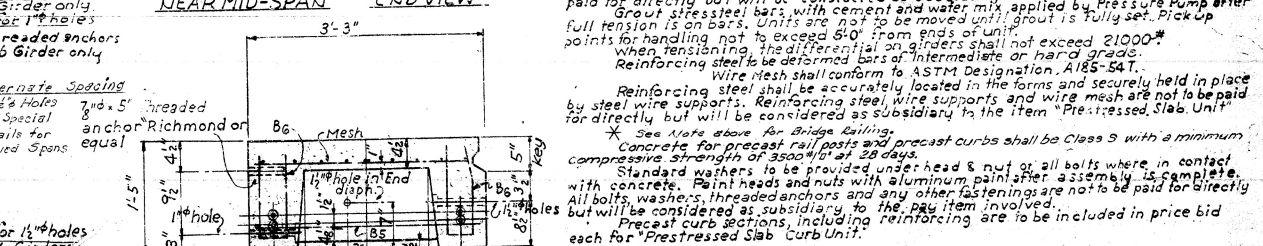
HALF PLAN SHOWING WELDED WIRE MESH

ALL UNITS



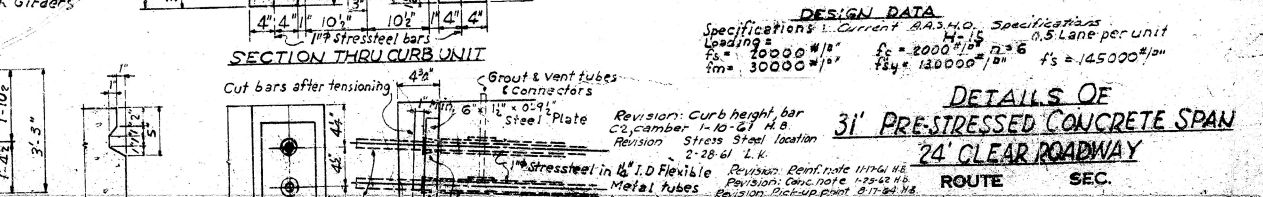
Sp. for $1\frac{1}{2}$ " holes

<u>HALF SECTION</u> <u>NEAR MID-SPAN</u>	<u>HALF</u> <u>END VIEW</u>



SECTION THRU CURB UNIT

SECTION THRU CURB UNIT



DETAIL OF
SHEAR KEY
Scale: $1\frac{1}{2}" = 1'-0"$

TYPICAL END DETAILS

TYPICAL END DETAILS

DETAILS OF

31' PRE-STRESSED CONCRETE SPAN

24' CLEAR ROADWAY

ROUTE SEC.

ARKANSAS STATE HIGHWAY COMMISSION

LITTLE ROCK, ARK.

DRAWN BY: FAW DATE: 1-10-57

CHECKED BY: MCH DATE: 1-26-57

BRIDGE NO. DRAWING NO. 5298