

DATE REMOVED	DATE FILMED	DATE REMOVED	DATE FILMED	FED. ROAD NO.	STATE	FED. AID PROJ. NO.	SHEET NO.	TOTAL SHEETS
				6	ARK.	BR-034-1(1)		
				JOB NO.	5798	11	48	
				6003	LAYOUT	25837		

### BORING LEGEND

- A-Moist, Loose, Brown Sand with Gravel and Cobbles
- B-Wet, Stiff, Gray Sandy Clay with Some Gravel
- C-Wet, Loose, Gray and Brown Sand with Gravel
- D-Moist, Stiff, Dark Gray Clay with Shale Fragments
- E-Moist, Very Hard, Dark Gray Clay-Shale
- F-Hard, Gray Limestone with Shale Seams
- G-Wet, Medium Dense, Brown Sand with Gravel and Cobbles
- H-Hard, Gray Limestone with Thin Shale Seams
- J-Moist, Medium Dense, Brown Sand with Gravel and Cobbles
- K-Wet, Dense, Brown Sand with Gravel and Cobbles
- L-Hard, Gray Limestone

GENERAL NOTES

BENCH MARK: CHISELED SQ. IN TOP OF WHEEL GUARD, 46' RT. STA. 283+93. ELEV. 347.85.  
DESIGN SPECIFICATIONS: AASHTO STANDARD SPECIFICATIONS FOR HIGHWAY BRIDGES, 1977  
EDITION WITH CURRENT INTERIMS.

CONSTRUCTION SPECIFICATIONS: ARKANSAS STATE HIGHWAY COMMISSION STANDARD SPECIFICATIONS FOR HIGHWAY CONSTRUCTION, EDITION OF 1978 AND APPLICABLE SPECIAL PROVISIONS.

DESIGN LIVE LOAD: HS20

DESIGN METHOD: LOAD FACTOR

CONCRETE: CONCRETE IN THE SUBSTRUCTURE SHALL BE CLASS "S"; CONCRETE IN THE SUPER-STRUCTURE SHALL BE CLASS "S(AE)." ALL CONCRETE SHALL HAVE A MINIMUM 28 DAY COMPRESSIVE STRENGTH,  $f_c = 3500$  PSI, AND SHALL BE POURED IN THE DRY. EXPOSED CORNERS TO BE CHAMFERED  $3/4"$  UNLESS OTHERWISE NOTED.

REINFORCING STEEL: REINFORCING STEEL SHALL CONFORM TO ASTM A615 OR A617, GRADE 60  
( $f_y = 60,000$  PSI).

FOOTINGS: FOOTINGS FOR BENTS 2, 3, & 4 SHALL BE SET A MINIMUM OF 1'-6" INTO MATERIAL DESIGNATED ON THE BORING LOGS AS DARK GRAY CLAY SHALE. FOUNDATIONS SHALL BE PREPARED IN ACCORDANCE WITH SUBSECTION 801.04 OF THE STANDARD SPECIFICATIONS.

**PILING:** PILING IN BENTS 1 & 5 SHALL BE HP10X42, AND SHALL BE DRIVEN TO A MINIMUM BEARING CAPACITY OF 55 TONS PER PILE, AND INTO MATERIAL DESIGNATED ON THE BORING LOGS AS DARK GRAY CLAY SHALE. ORDER LENGTHS SHOWN; CUT-OFF OR BUILD-UP, SHALL BE PAID FOR IN ACCORDANCE WITH THE STANDARD SPECIFICATIONS. PILES SHALL BE DRIVEN WITH AN APPROVED AIR, STEAM, OR DIESEL HAMMER. PILING IN END BENTS SHALL BE DRIVEN AFTER EMANKMENT TO BOTTOM OF CAP IS IN PLACE.

DECK FINISH: THE ROADWAY SURFACE OF THE CONCRETE BRIDGE DECK SHALL BE GIVEN A TINE FINISH AS SPECIFIED FOR FINAL FINISHING IN SUBSECTION 802.23 FOR CLASS 6, ROADWAY SURFACE FINISH.

FOR DETAILS OF END BENTS, SEE DWG. NO. 25838  
FOR DETAILS OF INT. BENTS, SEE DWG. NO. 25839  
FOR DETAILS OF 35' R.C. SLAB SPAN, SEE DWG. NOS. 25840 & 25841  
FOR DETAILS OF STEEL PILING, SEE DWG. NO. 14995A  
FOR DETAILS OF APPROACH GUTTERS, SEE DWG. NO. 1898J

REMOVAL AND SALVAGE OF EXISTING BRIDGE STRUCTURES: AFTER THE NEW BRIDGE IS COMPLETED AND OPENED TO TRAFFIC, THE EXISTING BRIDGE SHALL BE REMOVED IN ACCORDANCE WITH SECTION 205 OF THE STANDARD SPECIFICATIONS.

THE EXISTING BRIDGE No. 1190 IS 104' X 20' (ONE - SPAN), AND CONSISTS OF A STEEL PONY TRUSS AND CONCRETE BRIDGE DECK SUPPORTED BY A CONCRETE SUBSTRUCTURE.

THE STEEL PONY TRUSS SHALL BE SALVAGED FOR RE-ERECTION AND SHALL REMAIN THE PROPERTY OF THE STATE. THE STATE WILL BE RESPONSIBLE FOR TRANSPORTING THE SALVAGED STEEL TO AHTD CENTRAL SHOPS IN JACKSONVILLE, ARKANSAS. ALL OTHER MATERIAL SHALL BECOME THE PROPERTY OF THE CONTRACTOR.

DETOUR: FOR DETOUR, SEE ROADWAY PLANS.

LAYOUT OF BRIDGE OVER  
BRIAR CREEK  
WOLF BAYOU BR. & APPRS.

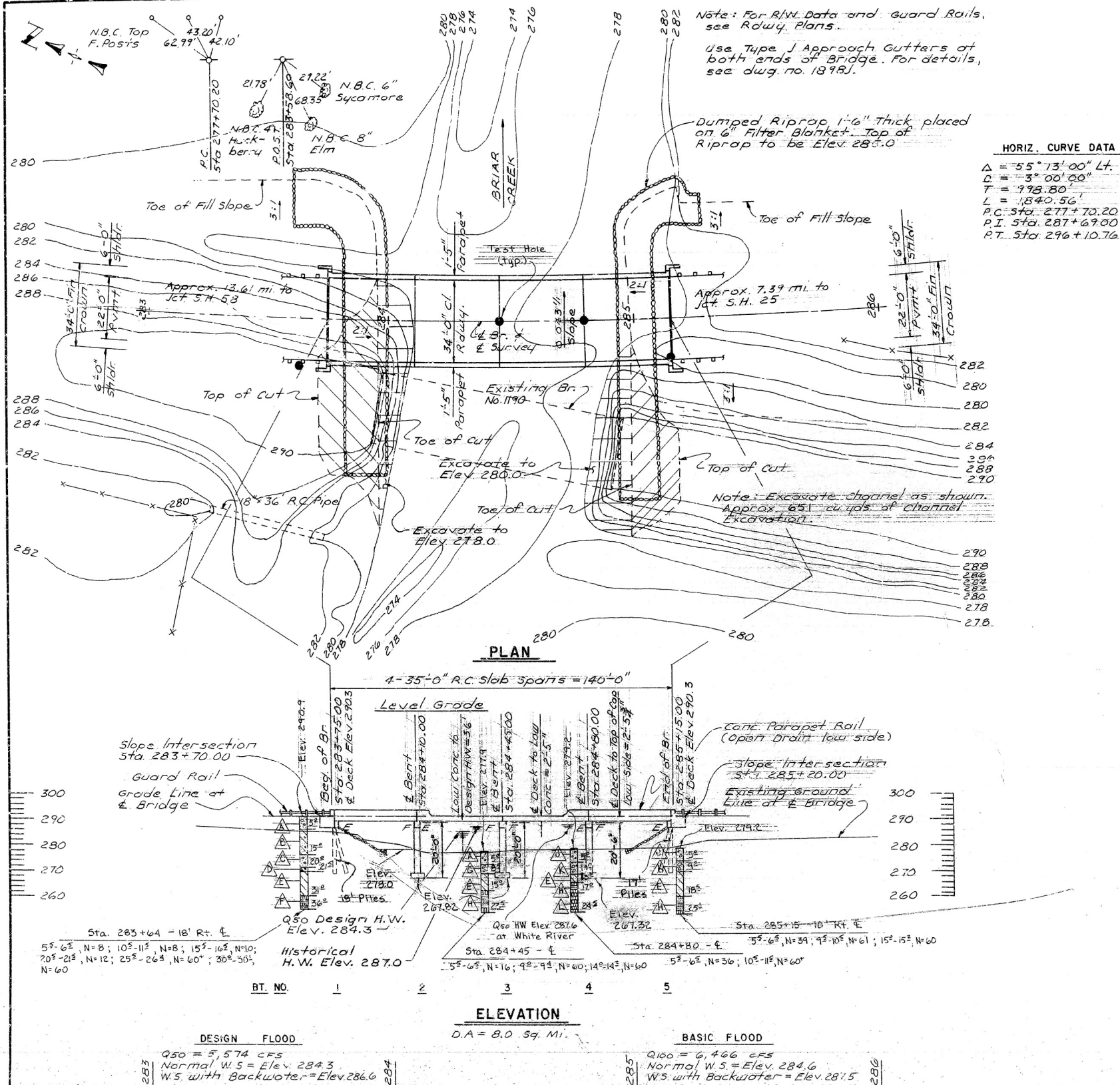
STONE COUNTY  
ROUTE 14 SEC. 7

ARKANSAS STATE HIGHWAY COMMISSION

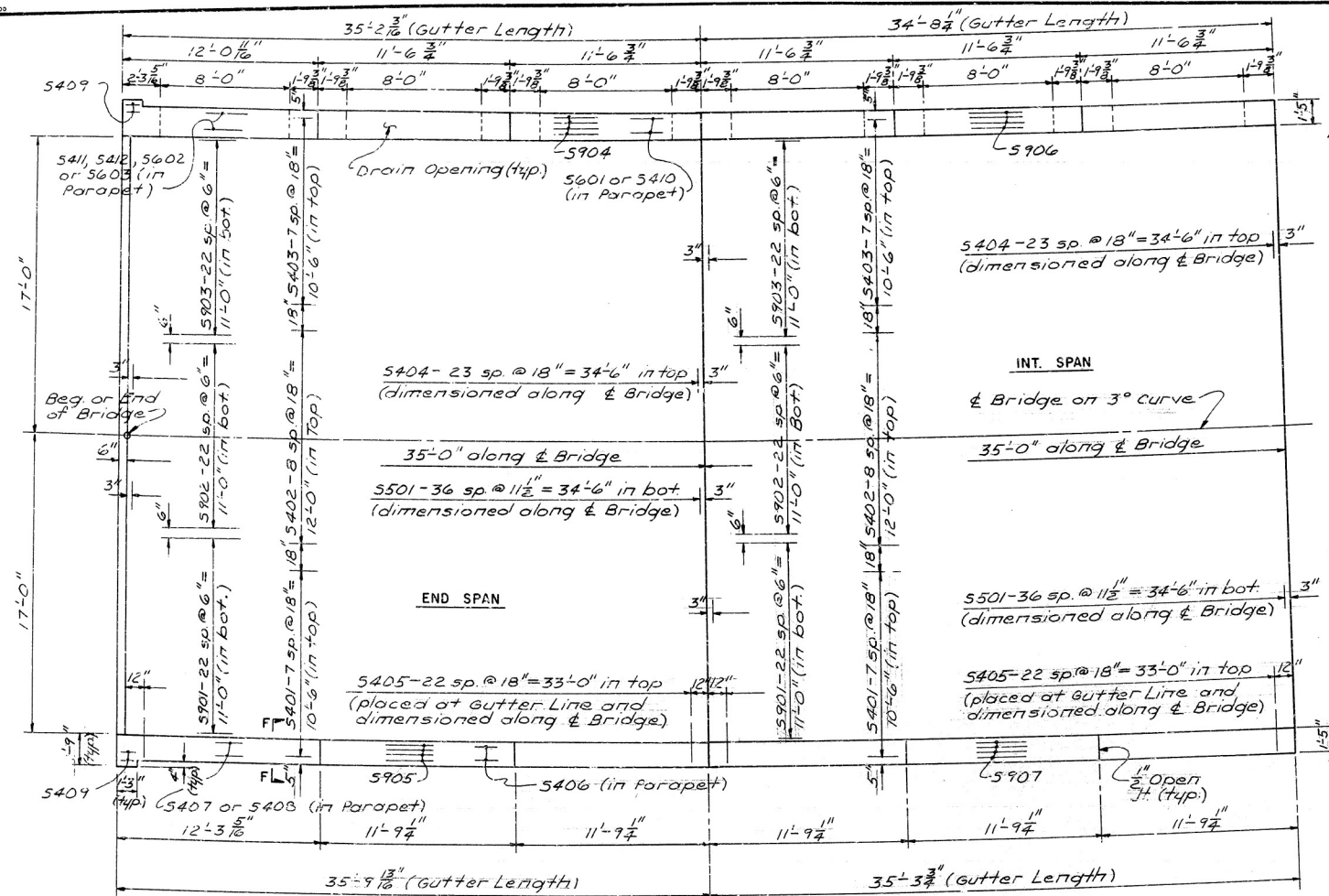
LITTLE ROCK, ARK.

DRAWN BY: J.P.S. DATE: 9-23-82  
CHECKED BY: MEW DATE: 1-5-82 SCALE: 1" = 20'-0"  
DESIGNED BY: C.B. DATE: 8/82

BRIDGE NO. 6003 DRAWING NO. 25837



REVISED	DATE	REVISED	DATE	FED. ROAD NO.	STATE	FED. AID PROJ. NO.	SHEET NO.	TOTAL SHEETS
				6	ARK.	BR-034-1(1)	14	48
				JOY. NO.		5798		
						6003	SPAN DTL'S	25840

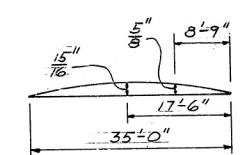


Note: Place Type C Bridge Name Plate on Right Parapet Turnout Post at beg. of Bridge only.

**PLAN**

Note: For Section F-F see dwg. no. 25841

Note: All Transverse Reinf. Steel are on Radial Lines, dimensioned along & Bridge.



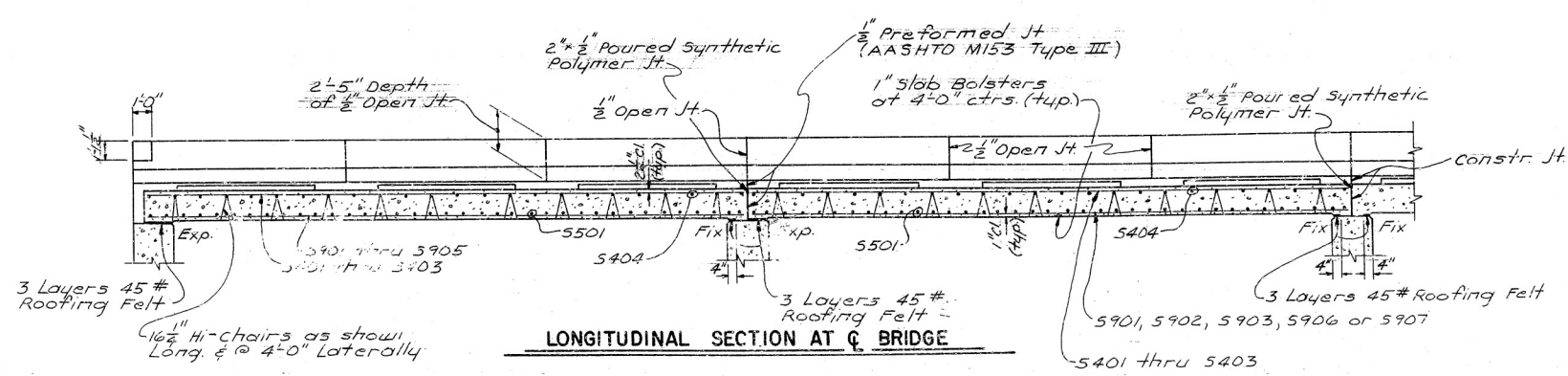
**D.L. DEFLECTION DIAGRAM**  
No scale.

BAR LIST PER SPAN				Bending Diagrams	
M.K.	No. Req'd	End	Int.	Length	Pin Dia
5401	8	8		35'-0"	str.
5402	9	9		34'-9"	str.
5403	8	8		34'-6"	str.
5404	24	24		36'-6"	str.
5405	23	23		2'-3"	str.
5406	12	18		11'-5"	str.
5407	2			10'-11"	str.
5408	4			11'-11"	str.
5409	10			1'-0"	str.
5410	8	12		11'-3"	str.
5411	1			10'-9"	str.
5412	3			11'-9"	str.
5413	59	60		7'-10"	2"
5414	23	24		6'-10"	2"
5415	36	36		5'-6"	2"
5416	13	13		3'-9"	str.
5417	27	27		6'-4"	2"
5418	27	27		3'-2"	2"
5501	37	37		36'-6"	str.
5601	10	15		11'-3"	str.
5602	2			10'-8"	str.
5603	3			11'-8"	str.
5604	10	10		6'-11"	4"
5605	6			4'-10"	3 3/4"
5606	4			8'-9"	3 3/4"
5901	23	23		35'-0"	str.
5902	23	23		34'-9"	str.
5903	23	23		34'-6"	str.
5904	4			34'-0"	str.
5905	4			35'-6"	str.
5906	4			34'-4"	str.
5907	4			35'-0"	str.

Dimensions are out to out of Bars.

**GENERAL NOTES**

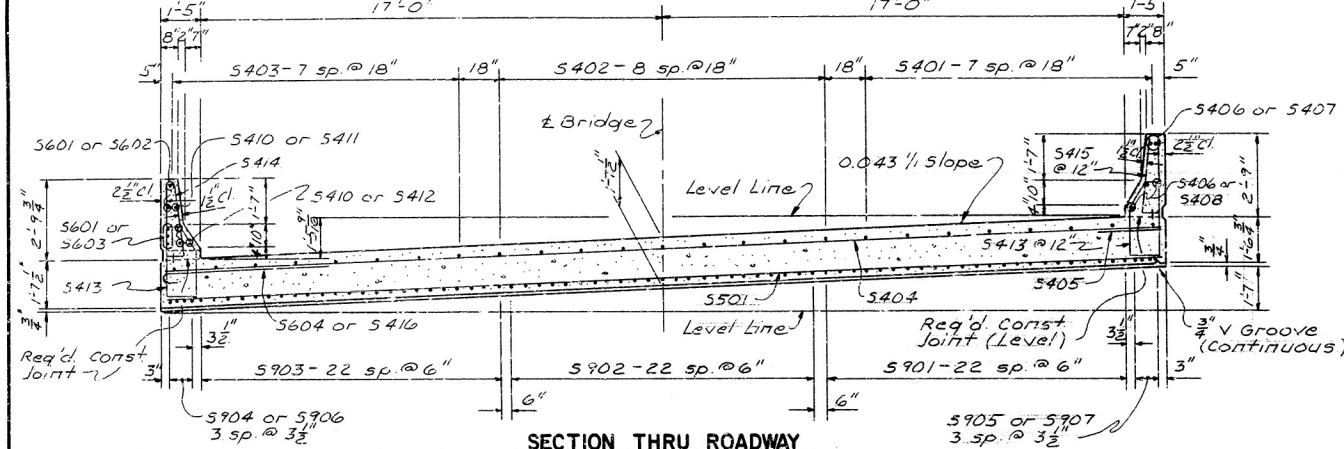
- ALL EXPOSED CORNERS TO BE CHAMFERED 3/4" UNLESS OTHERWISE NOTED.
- BAR SUPPORTS FOR REINFORCING BARS WILL NOT BE PAID FOR DIRECTLY BUT WILL BE CONSIDERED SUBSIDIARY TO THE ITEM "REINFORCING STEEL."
- ROOFING FELT, PREFORMED JOINT, AND SYNTHETIC POLYMER SHALL BE MEASURED AND PAID FOR AS CLASS (SAC) CONCRETE.
- SPECIFICATIONS: ARKANSAS STATE HIGHWAY COMMISSION STANDARD SPECIFICATIONS FOR HIGHWAY CONSTRUCTION EDITION OF 1978 AND APPLICABLE SPECIAL PROVISIONS.
- DESIGN SPECIFICATIONS: AASHTO STANDARD SPECIFICATIONS FOR HIGHWAY BRIDGES, 1977 AND INTERIMS.
- LIVE LOAD: HS20 METHOD OF DESIGN: LOAD FACTOR
- CONCRETE: ALL CONCRETE SHALL BE CLASS (SAC) WITH A MINIMUM 28 DAY COMPRESSIVE STRENGTH  $f_c = 3500$  PSI.
- LOAD DISTRIBUTION TO SLAB: DEAD LOAD: 294 PSF  
LIVE LOAD: 0.167 WHEELS/FT. OF WIDTH PLUS 30% IMPACT.
- REINFORCING STEEL: REINFORCING STEEL SHALL CONFORM TO ASTM A615 OR A617, GRADE 60 (YIELD STRENGTH = 60,000 PSI).



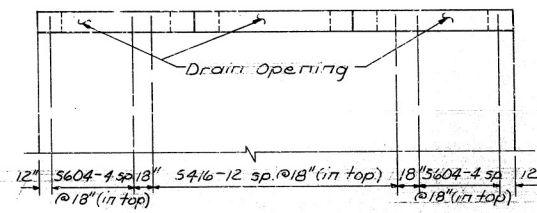
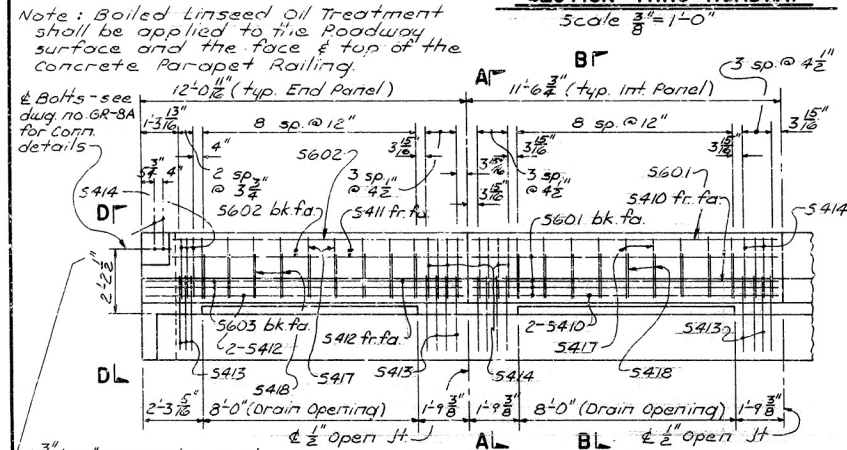
**LONGITUDINAL SECTION AT C BRIDGE**

SHEET 1 OF 2  
DETAILS OF  
35'-0" R.C. SLAB SPANS  
BRIAR CREEK  
STONE COUNTY  
ROUTE 14 SEC. 7  
ARKANSAS STATE HIGHWAY COMMISSION

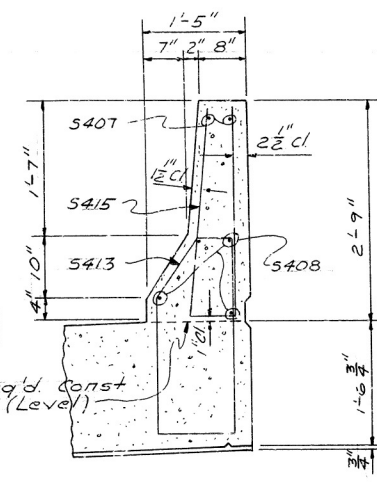
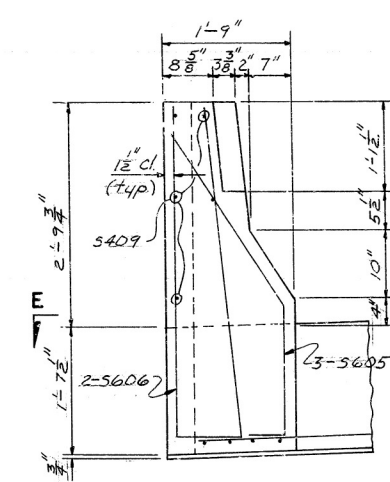
LITTLE ROCK, ARK.  
DRAWN BY: J.P.S. DATE: 2-11-83  
CHECKED BY: GEC DATE: 2-22-83  
DESIGNED BY: MEW DATE: 2-3-83  
BRIDGE NO. 6003 DRAWING NO. 25840



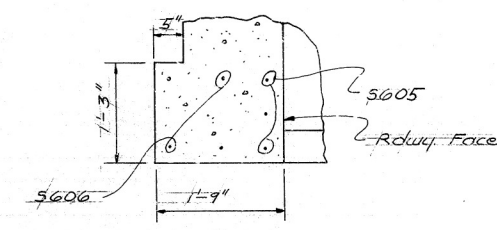
Note: The concrete bridge deck shall be given a fine finish as specified for final finishing in subsection 802.23 for class 6, Roadway Surface Finish.



Note: S416 & S604 are on Radial Lines, dimensioned along & Bridge.



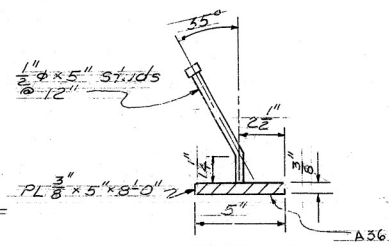
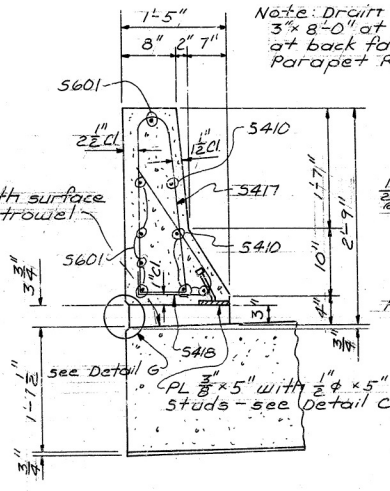
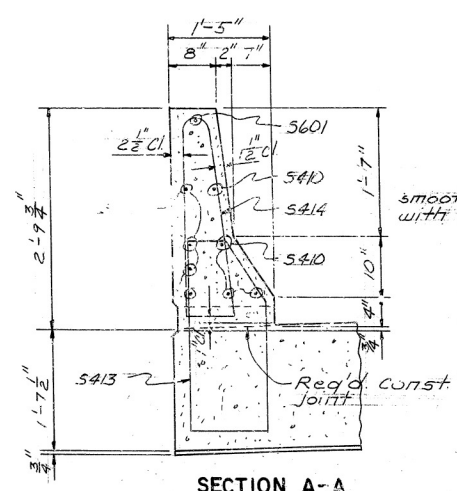
Note: For location of Sec. F-F see dwg no. 25840



NOTES: THE SURFACES OF THE 3/8" PLATES WHICH WILL NOT BE IN CONTACT WITH CONCRETE SHALL RECEIVE TWO COATS OF PAINT IN THE SHOP. THESE COATS SHALL BE THOSE SPECIFIED AS FIRST SHOP COAT AND SECOND FIELD COAT IN SP 807-10.

STRUCTURAL STEEL SHALL MEET THE REQUIREMENTS OF SECTION 807. THE 1/2" Ø X 5" STUDS SHALL BE GRANULAR FLUX FILLED, SOLID FLUXED, OR EQUAL AND AUTOMATICALLY END WELDED TO THE 3/8" PLATE IN ACCORDANCE WITH RECOMMENDATIONS OF THE MANUFACTURER.

THE PLATES AND STUDS SHALL BE MEASURED AND PAID FOR AS STRUCTURAL STEEL IN BEAM SPANS - (A572 - GR. 50).



**DETAIL G**  
No Scale

SHEET 2 OF 2  
DETAILS OF  
35'-0" R.C. SLAB SPANS  
BRIAR CREEK  
STONE COUNTY  
ROUTE 14 SEC. 7  
ARKANSAS STATE HIGHWAY COMMISSION  
LITTLE ROCK, ARK.

DRAWN BY: J.P.S. DATE: 2-16-83  
CHECKED BY: G.E.C. DATE: 2-22-83 SCALE: as noted  
DESIGNED BY: MEW DATE: 2-3-83  
BRIDGE NO. 6003 DRAWING NO. 25841