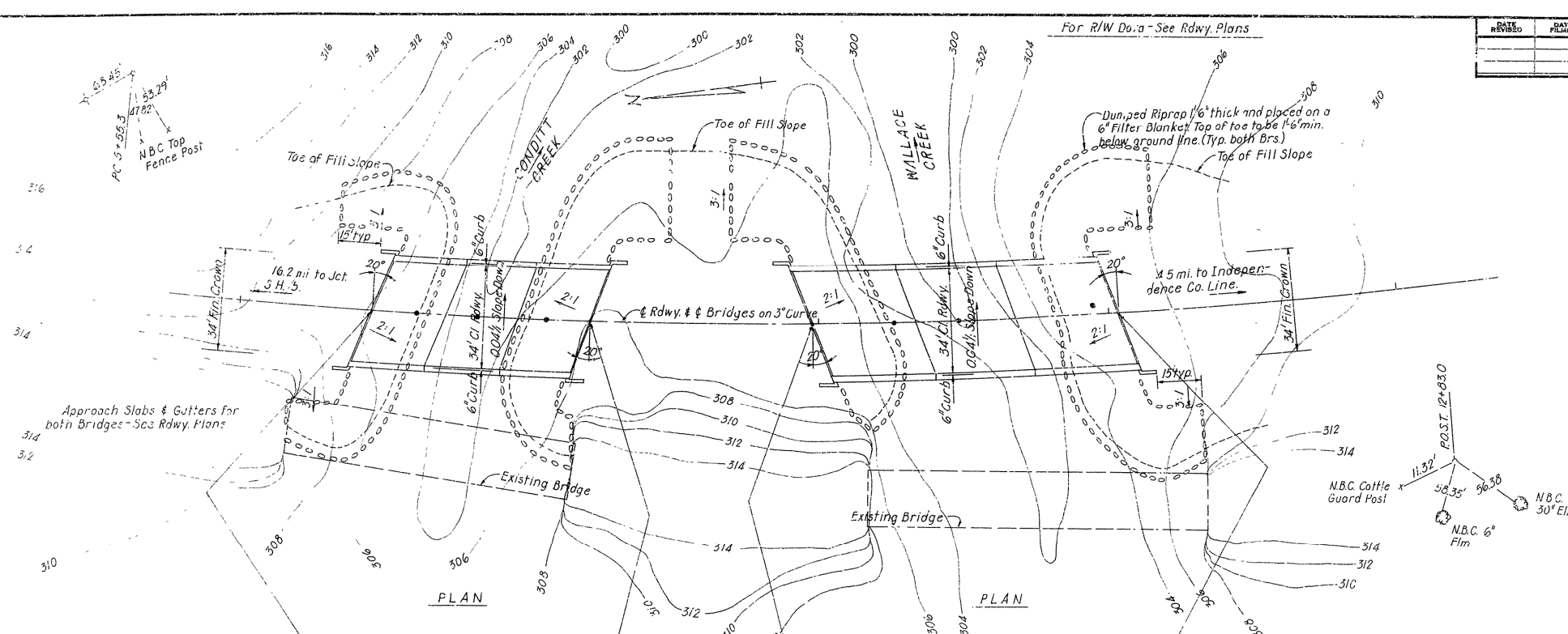


DATE REVISION	DATE FILLED	DATE REVISION	DATE FILLED	FED. ROAD NO.	STATE	FED. AID PROJ.	FISCAL YEAR	SHEET NO.	TOTAL SHEETS
				5	ARK.	191(4)		11	65
				JOB NO.	501 5408, 5409 LAYOUTS 17110				



HORIZONTAL CURVE DATA

Δ = 91°09' Lt
D = 3°00'
T = 194.6.7'
L = 303.3.3'
R = 1909.86'
PI = 25+04.0

Construct Bridges on 3° Curve. Bents shall be constructed on 20° Lt Fwd skew (Br 5408) and 20° Rt Fwd skew (Br 5409). Skew angle shall be turned off a radial line. Curbs shall be concentric arcs of 3° Curve.

The existing 99' bridge over Conditt Creek and the existing 118' bridge over Wallace Creek shall be removed after the new bridges are open for traffic. Both existing bridges consist of concrete and timber deck on steel and timber stringers. Both existing bridges have timber substructure. See section 1006 of the Standard Specifications.

GENERAL NOTES

BENCH MARK - U.E. 1-B-ABOUT 1 MILE NW ALONG HIGHWAY 14 FROM TABLE NW1/4 OF SECTION 7, T13N, R8W IN CENTER OF WEST CONCRETE CURBING OF NORTHERN MOST BRIDGE OVER WALLACE CREEK A CHISELED SQUARE PAINTED U.E. 1-B; ELEVATION 315.26.

FOOTINGS SHALL BE SET A MINIMUM OF 1'-6" INTO ROCK. ROCK EXCAVATIONS SHALL BE MADE TO NEAT LINES OF CONCRETE FOOTINGS. CARE SHALL BE EXERCISED TO AVOID SHATTERING OF ROCK FACES BY EXCESSIVE BLASTING. CONCRETE IN FOOTINGS SHALL BE POURED DIRECTLY AGAINST EXCAVATED SURFACES OF ROCK.

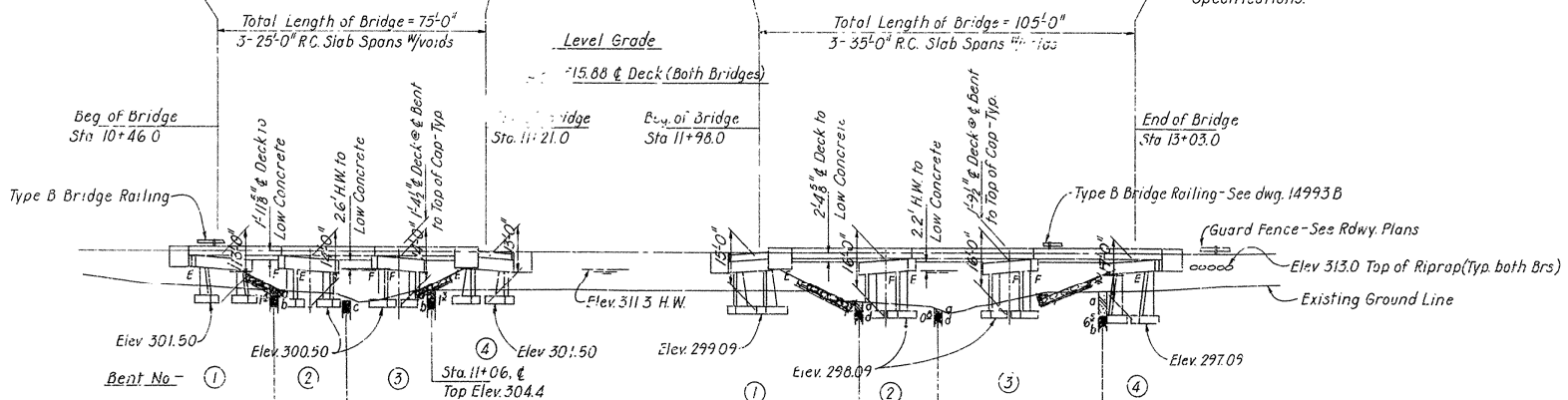
ALL CONCRETE SHALL BE POURED IN THE DRY.

FOR DETAILS OF END BENTS SEE DWG. NO. 17113, 17117
FOR DETAILS OF INTERMEDIATE BENTS SEE DWG. NO. 17114, 17118
FOR DETAILS OF 25' AND 35' R.C. SLAB SPANS SEE DWG. NO. 17115, 17116, 17119, 17120

SPECIFICATIONS: ARKANSAS STATE HIGHWAY COMMISSION STANDARD SPECIFICATIONS FOR HIGHWAY CONSTRUCTION, EDITION OF 1959, THE 1966 SUPPLEMENTAL SPECIFICATIONS, AND APPLICABLE SPECIAL PROVISIONS.

DESIGN SPECIFICATIONS: AASHO 1969
LIVE LOADING: H20
UNIT STRESSES: CLASS 5 CONCRETE (N=10) 1,200 PSI
REINFORCING STEEL 20,000 PSI

FOUNDATION PRESSURE - Group III 9.1 ksf max.
3.5 ksf min.



BORING LOG

a - Clay, Gravel & Boulders
b - Solid Rock
c - Solid Rock Exposed
d - Rock or Large Boulder

ELEVATION - BR 5408

D.A. = 1.8 sq. mi.
Q50 = 2900 cfs

ELEVATION - BR 5409

D.A. = 4.3 sq. mi.
Q50 = 4900 cfs

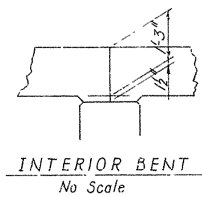
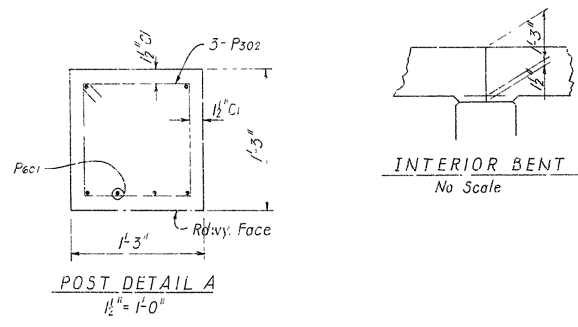
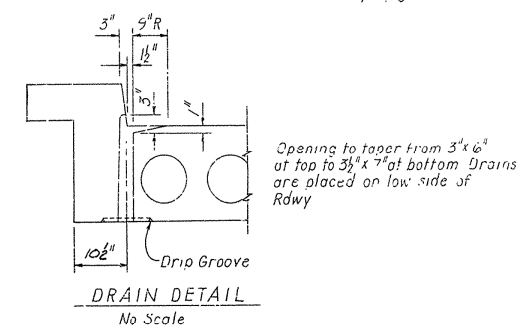
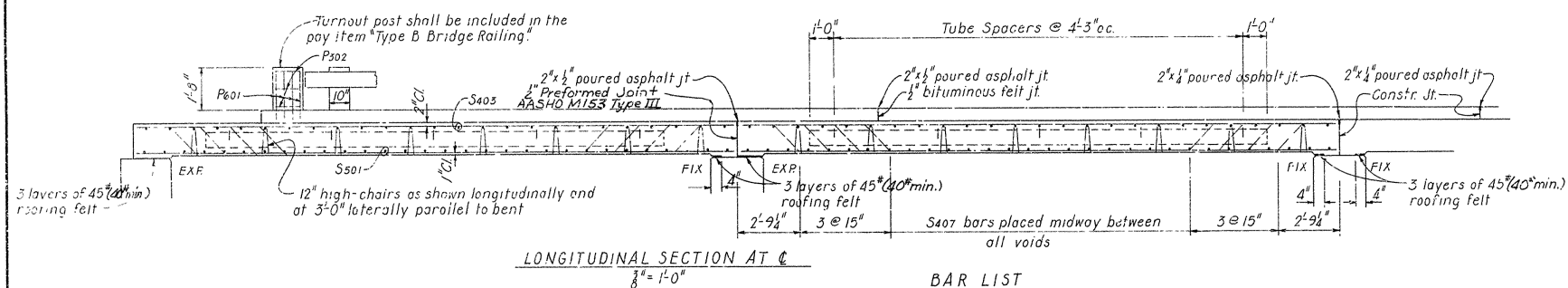
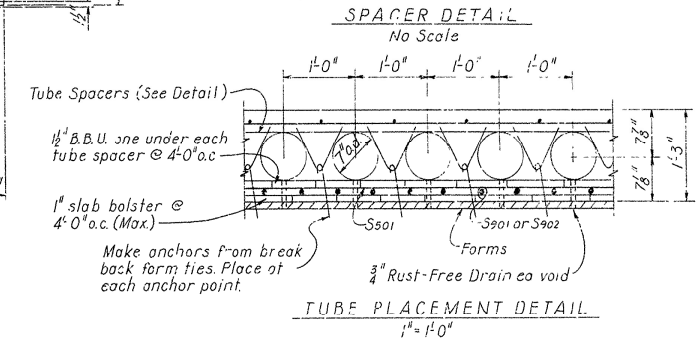
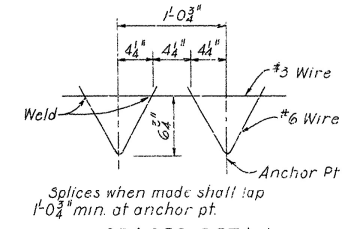
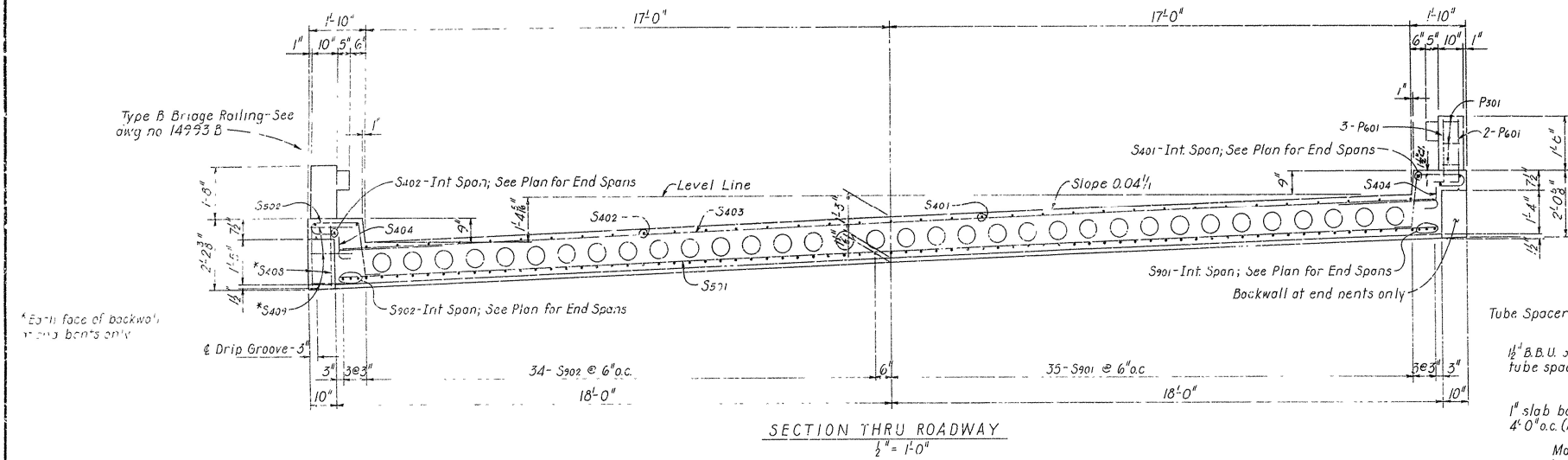
NOTE: Bent Height Dimensions are from point on top of cap located below the intersection of Deck & Bent to bottom Elev. of Footings.

**LAYOUT OF BRIDGES OVER
CONDITT & WALLACE CREEKS**

HWY. 14 BRIDGES
STONE COUNTY
ROUTE 14 SEC. 7
ARKANSAS STATE HIGHWAY COMMISSION
LITTLE ROCK, ARK.

DRAWN BY: H. Maj. DATE: 11-13-70
CHECKED BY: EMH DATE: 11-13-70
BRIDGE NO. 5408, 5409 DRAWING NO. 17110
SCALE: 1" = 20'

DATE REVIEWED	DATE FILMED	DATE REVISIT	DATE FILMED	FED. ROAD NO.	STATE	FED. AID PROJ. NO.	STATE AID PROJ. NO.	SHEET NO.	TOTAL SHEETS
				6	ARK.	5-	191(4)		
								JOB NO. 5617	18 66
								SD 5408 SPAN	17/16



MARK	No. Bars Req'd		Length	Pin Dia.	Bending Diagrams
	End	Int.			
S901	35	38	24'-8"	Str.	37'-11"
S902	34	37	24'-5"	Str.	
S903	3	-	25'-0"	Str.	1'-4 1/2"
S904	3	-	25'-6"	Str.	
S901	30	30	37'-11"	Str.	1'-4 1/2"
S902	80	80	5'-0"	2 1/2"	
S401	18	21	24'-8"	Str.	1'-9"
S402	17	20	24'-5"	Str.	
S403	25	25	38'-11"	3"	5'-0"
S404	40	40	5'-5"	2"	
S405	3	-	25'-0"	Str.	1'-11"
S406	3	-	25'-6"	Str.	
S407	264	264	2'-9"	2"	5'-0"
S408	8	-	1'-9"	Str.	
S409	12	-	1'-5"	Str.	1'-11"
P601	52	40	2'-0"	3"	
P301	24	24	2'-9"	1 1/2"	1'-11"
P302	6	-	4'-5"	1 1/2"	

Dimens. are out to out of bars.

SHEET 2 OF 2
DETAILS OF SPANS
CONDITT CREEK
HWY. 14 BRIDGES
STONE COUNTY
ROUTE 14 SEC. 7
ARKANSAS STATE HIGHWAY COMMISSION
LITTLE ROCK, ARK.
DRAWN BY: H. Haj DATE: 11-19-70
TRACED BY: DATE: 12-2-70
CHECKED BY: DFL DATE: 12-2-70
BRIDGE NO. 5408 DRAWING NO. 17116

W. S. Pinkerton
BRIDGE ENGINEER