

BORING LOG
A. Comp. Clay Gravel & Bould.
B. Rock or Large Bould.

DATE REVISED	DATE FILMED	DATE REVISED	DATE FILMED	FED. ROAD NO.	STATE	FED. AID PROJ. NO.	FISCAL YEAR	SHEET NO.	TOTAL SHEETS
				6	ARK.	16(4)		10	GS
				JOB NO.	5407		LAYOUT	17109	

GENERAL NOTES

BENCH MARK - U.E. 28 CHISLED "a" ON CENTER OF S.W. CURBING ON MILL CREEK BRIDGE, ELEVATION 323.18.

FOOTINGS SHALL BE SET A MINIMUM OF 1'-6" INTO ROCK. ROCK EXCAVATIONS SHALL BE MADE TO NEAT LINES OF CONCRETE FOOTINGS. CARE SHALL BE EXERCISED TO AVOID SHATTERING OF ROCK FACES BY EXCESSIVE BLASTING. CONCRETE IN FOOTINGS SHALL BE POURED DIRECTLY AGAINST EXCAVATED SURFACES OF ROCK.

ALL CONCRETE SHALL BE POURED IN THE FIELD.

FOR DETAILS OF END BENTS SEE DWG. NO. 17112
FOR DETAILS OF INTERMEDIATE BENTS SEE DWG. NO. 17112
FOR DETAILS OF 35' R.C. SLAB SPANS SEE DWG. NO. 14987

SPECIFICATIONS: ARKANSAS STATE HIGHWAY COMMISSION STANDARD SPECIFICATIONS FOR HIGHWAY CONSTRUCTION, EDITION OF 1959, THE 1966 SUPPLEMENTAL SPECIFICATIONS, AND APPLICABLE SPECIAL PROVISIONS.

DESIGN SPECIFICATIONS: AASHTO 1969
LIVE LOADING: H20

UNIT STRESSES: CLASS S CONCRETE (w=10) 1,200 PSI
REINFORCING STEEL 20,000 PSI

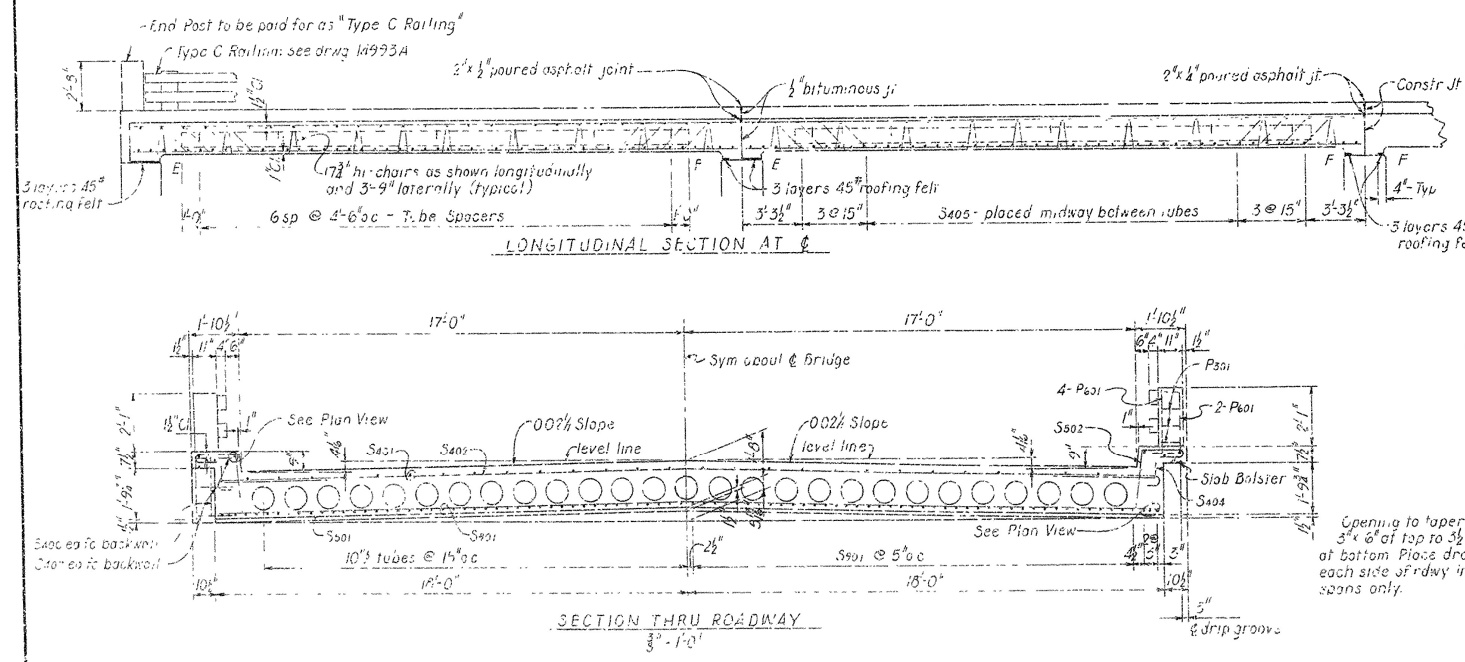
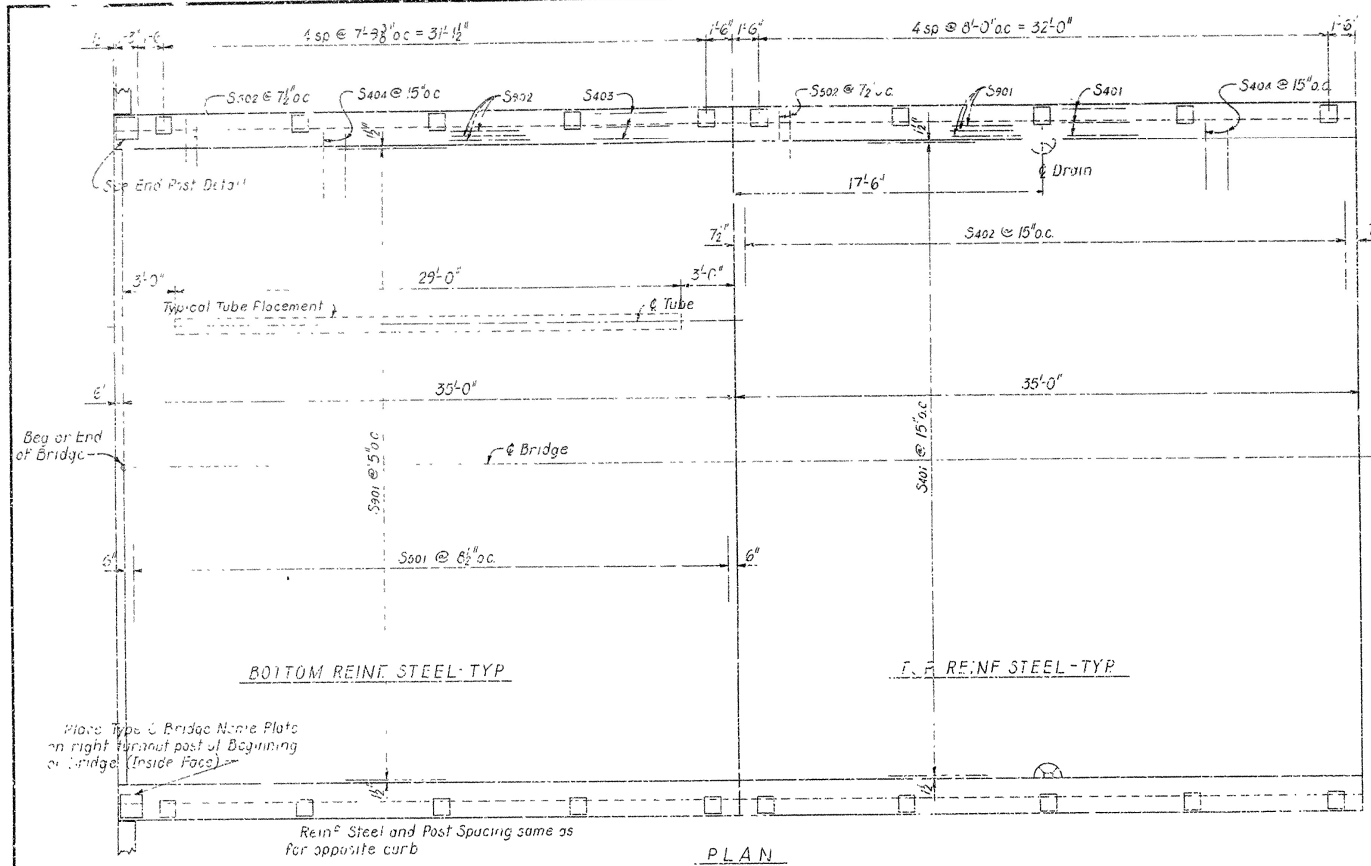
FOUNDATION PRESSURE - Group III 7.8 ksf max.
5.4 ksf min.

NOTE: REMOVE THE EXISTING 195' BRIDGE AFTER THE NEW BRIDGE IS OPEN FOR TRAFFIC. THE EXISTING BRIDGE SUPERSTRUCTURE CONSISTS OF A CONCRETE AND TIMBER DECK ON STEEL AND TIMBER STRINGERS. THE EXISTING BRIDGE HAS A TIMBER SUBSTRUCTURE. SEE SECTION 1006 OF THE STANDARD SPECIFICATIONS.

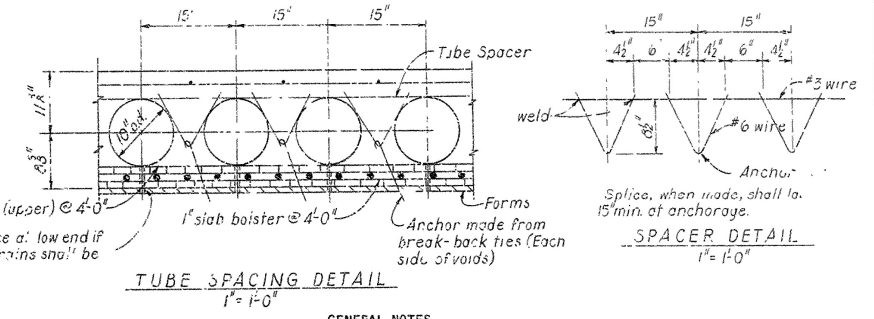
LAYOUT OF BRIDGE OVER
MILL CREEK
HWY. 14 BRIDGES
STONE COUNTY
ROUTE 14 SEC. 7
ARKANSAS STATE HIGHWAY COMMISSION
LITTLE ROCK, ARK.

DRAWN BY: W.W.W. DATE: 11-1-72
CHECKED BY: DEL DATE: 12-2-72
BRIDGE NO. 5407 DRAWING NO. 17109

DATE DESIGNED	DATE FILMED	DATE REVISED	DATE FILMED	FEED. NO.	STATE	FISCAL YEAR	SHEET NO.	TOTAL SHEETS
				6	ARK.			
				JOB NO.				



1/4" beam bolster (upper) @ 4'-0"
3/4" drain for an void. Place at low end if void is not level. Metal drains shall be rust free.



GENERAL NOTES

ALL CONCRETE TO BE CLASS S. ALL EXPOSED CORNERS TO BE CHAMFERED 3/4" UNLESS OTHERWISE NOTED.

REINFORCING STEEL TO BE DEFORMED BARS OF INTERMEDIATE OR HARD GRADE. SHOP LISTS AND BENDING DIAGRAMS MUST BE SUBMITTED AND APPROVAL SECURED BEFORE FABRICATION IS BEGUN.

ALL CYLINDRICAL TUBES USED TO FORM VOIDS SHALL BE OF MOISTURE PROTECTED, LAMINATED TYPE CONSTRUCTION, MINIMUM THICKNESS 0.225", AND SHALL BE FURNISHED COMPLETE WITH END CLOSURES.

ALL REINFORCING STEEL AND FIBER TUBES SHALL BE ACCURATELY LOCATED IN THE FORMS AND FIRMLY HELD IN PLACE BY MEANS OF STEEL WIRE SUPPORTS AND SPACERS FOR TUBES OF A SUFFICIENT NUMBER AND SIZE TO PREVENT DISPLACEMENT, DURING THE COURSE OF CONSTRUCTION BUT IN NO CASE OF LESSER DESIGN THAN THAT SHOWN.

WIRE SUPPORTS FOR REINFORCING BARS WILL NOT BE PAID FOR DIRECTLY, BUT WILL BE CONSIDERED SUBSIDIARY TO THE ITEM "REINFORCING STEEL". TUBES FOR FORMING VOIDS AND WIRE SUPPORTS, SPACERS FOR TUBES WILL NOT BE PAID FOR DIRECTLY, BUT WILL BE CONSIDERED SUBSIDIARY TO THE ITEM "CLASS S CONCRETE". SHOP LISTS AND DIAGRAMS OF WIRE SUPPORTS AND SPACERS FOR TUBES SHALL BE SUBMITTED FOR APPROVAL BEFORE FABRICATION IS BEGUN.

ROOFING FELT, BITUMINOUS FELT, AND POURED ASPHALT JOINTS SHALL BE MEASURED AND PAID FOR AS CLASS S CONCRETE.

SPECIFICATIONS: ARKANSAS STATE HIGHWAY COMMISSION STANDARD SPECIFICATIONS FOR HIGHWAY CONSTRUCTION EDITION OF 1959, THE 1966 SUPPLEMENTAL SPECIFICATIONS, AND APPLICABLE SPECIAL PROVISIONS.

DESIGN SPECIFICATIONS: AASHTO 1969

DESIGN LIVE LOADING: H20

LOAD DISTRIBUTION: 1.0 SLAB: DEAD LOAD-201 PSF; LIVE LOAD-0.166 WHEELS/FT. OF WIDTH PLUS 30% IMPACT

UNIT STRESSES: CLASS S CONCRETE (f'c=10) 1,230 PSI
REINFORCING STEEL 20,000 PSI

BAR LIST

BAR	No. Req'd	Length	Pin Dia.	Bending Diagrams
	Int.	End		(Dimens. are out to out of bars)
S401	40	0	34'-0"	Str.
S402	40	0	35'-0"	Str.
S403	40	49	35'-0"	Str.
S404	112	112	5'-7"	2#
S405	34	28	34'-0"	Str.
S406	28	28	36'-0"	3"
S407	6	6	35'-0"	Str.
S408	56	56	5'-1"	2"
S409	208	208	3'-3"	2"
S410	8	8	2'-1"	Str.
S411	12	12	3'-5"	Str.
P401	60	60	3'-5"	3"
P402	16	16	3'-10"	3"
P403	40	40	3'-1"	3"
P404	4	4	4'-5"	12"

DETAILS OF STANDARD 35'-0" R.C. SLAB SPAN (W/VOIDS) 34' CLEAR ROWY. 6" CURBS ROUTE SEC.

ARKANSAS STATE HIGHWAY COMMISSION

LITTLE ROCK, ARK.

DRAWN BY: DATE: 5-12-70

TRACED BY: DATE: 5-12-70

CHECKED BY: DATE: 5-12-70

BRIDGE NO. DRAWING NO. 14987