

246

GENERAL NOTES

All concrete to be Class S. All exposed corners to be chamfered.
Field connections to be riveted or bolted with high strength bolts.
Rivets: 3/4", Green hair 460 except where noted otherwise.
Structural shapes of equal or greater strength may be substituted for shapes shown, but payment will be made on the basis of shapes shown or those actually used, whichever is less.
All welded connections to be 3/8" fillet shop welds except as noted.
All welds shall conform to the American Welding Society Standard Specifications for Welded Highway and Railway Structures.
Shop Paint: All structural steel except surfaces in contact with concrete shall be given one coat of red lead and raw unseed oil before shipment.
Field Paint: First coat - red lead tinted with lamp black. Second coat - aluminum.
All beam and roadway expansion devices to be paid for as structural steel in beam spans. Bearings shall be finally secured in a manner set forth in the Specifications and this work and material are to be considered as subsidiary to the item "Structural Steel in Beam Spans" and will not be paid for directly.
This drawing shows general features of design only. Shop drawings shall be made in accordance with the Specifications, submitted and approval secured before fabrication is begun.

Reinforcing steel to be deformed bars of intermediate or high grade. The reinforcing steel is to be accurately located, the forms and firmly held in place by steel wire supports sufficient in number and size to prevent displacement during the pouring of concrete. The wire supports will not be paid for directly but will be considered subsidiary to the item of "Reinforcing Steel".
All beams and roadway expansion devices to be paid for as structural steel in beam spans. Bearings shall be finally secured in a manner set forth in the Specifications and this work and material are to be considered as subsidiary to the item "Structural Steel in Beam Spans" and will not be paid for directly.
This drawing shows general features of design only. Shop drawings shall be made in accordance with the Specifications, submitted and approval secured before fabrication is begun.

SPECIFICATIONS

Arkansas State Highway Commission Standard Specifications for Highway Construction Edition of 1959.

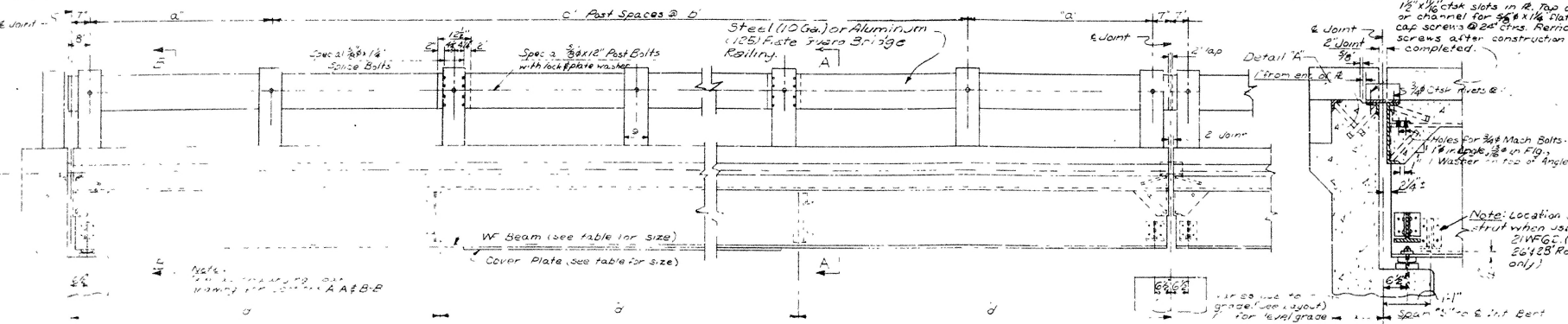
DETAILS COMMON TO STANDARD 35'-00"

COMPOSITE I-BEAM SPANS

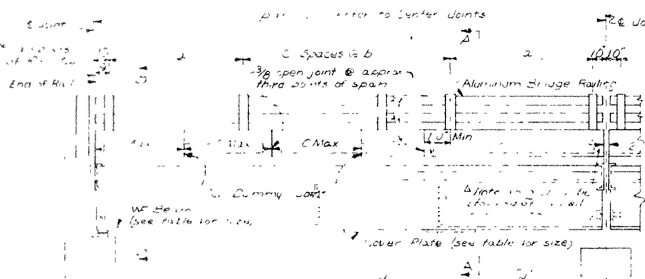
20', 24', 26', AND 28' ROADWAYS

ARKANSAS STATE HIGHWAY COMMISSION

LITTLE ROCK, ARK.
DRAWN BY: B.U.P. DATE: 5-25-59
TRACED BY: DATE: 5-25-59
CHECKED BY: E.K.G. DATE: 5-25-59
BRIDGE NO. DRAWING NO. 5462



ELEVATION SHOWING STEEL PLATE GUARD

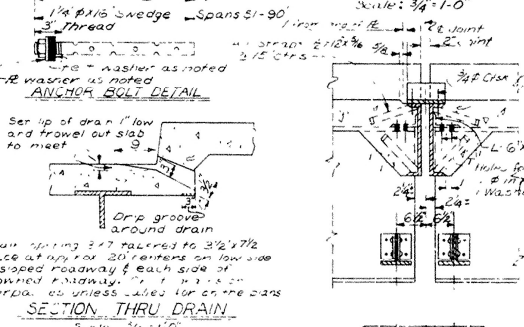


ELEVATION SHOWING ALUMINUM RAILING

PLAN OF OPEN JOINT

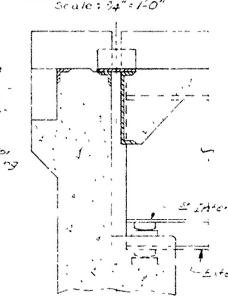
DETAILS OF ALUMINUM RAILING

JOINT AT END BENT

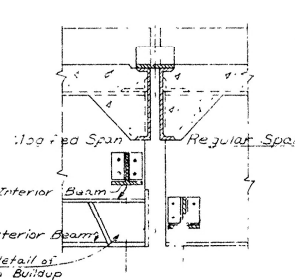


SECTION THRU DRAIN

JOINT AT INT. BENT

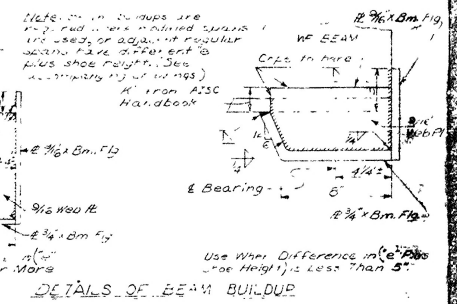


JOINT AT END BENT SHOWING MODIFIED SPAN



JOINT AT INT. BENT SHOWING MODIFIED AND REGULAR SPAN

Revised Note 12-16-59 E.R.B.
Revised Shop Dimensions 1-12-60 B.U.
Revised Shop Drawing Note 6-2-60 J.V.
Revised General Notes



DETAILS OF BEAM BUILDUP

TYPE "B" FIXED OR EXPANSION SHOE

Use for end bents - 25' spans.
Use for int. bents - 35'-00' spans.

TYPE "A" FIXED SHOE

TYPE "A" EXPANSION SHOE

Revised Note Added - 6-23-59 J.V.