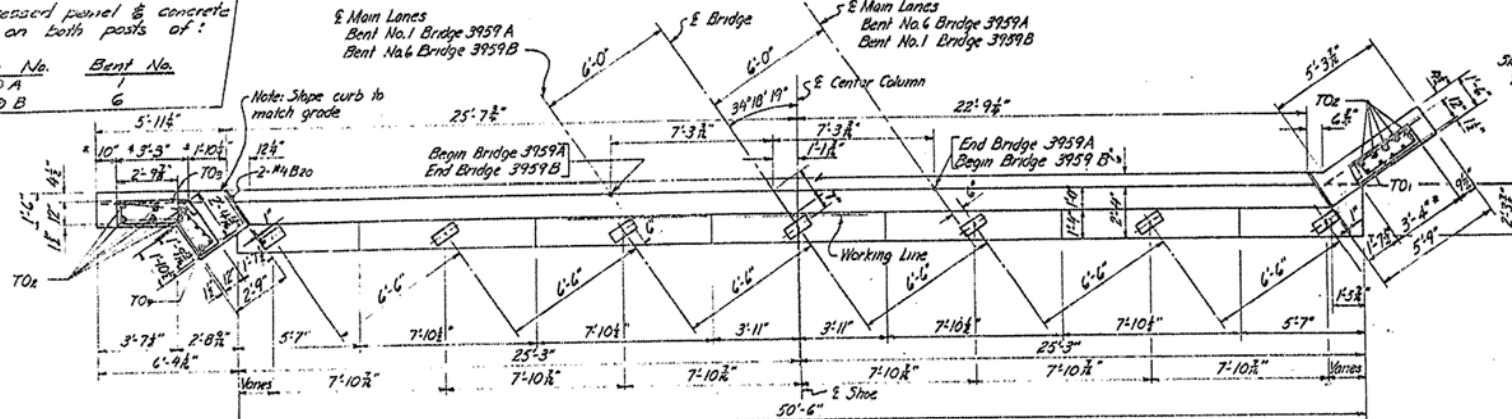


\* Unit recessed panel & concrete anchors on both posts of:

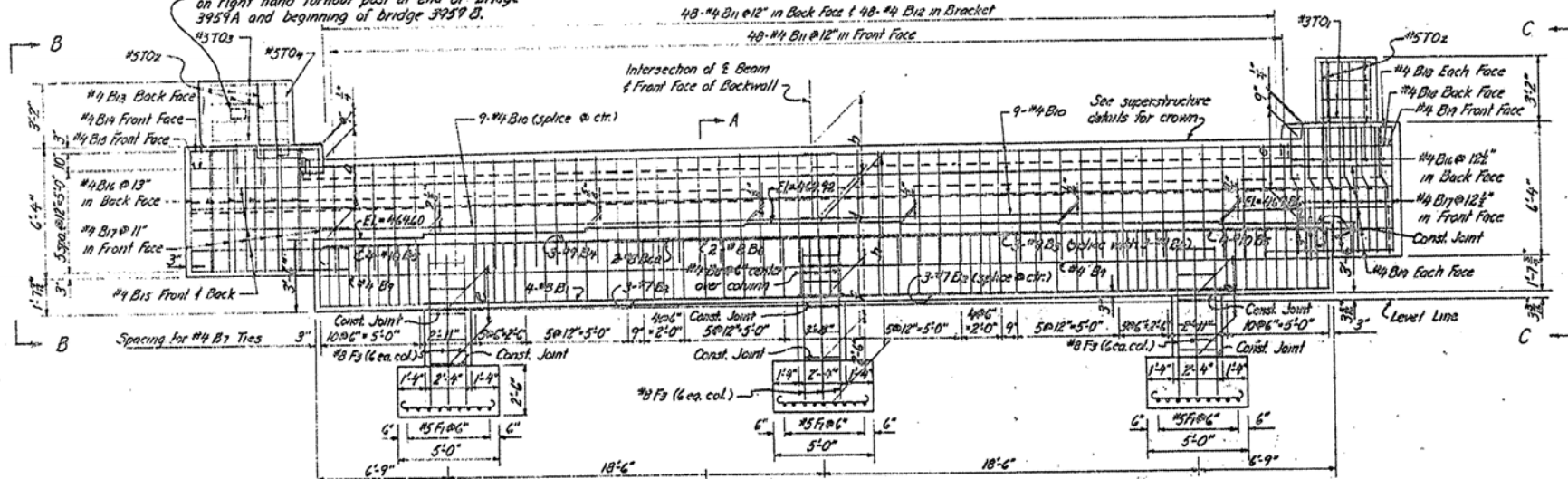
Bridge No. 3959 A  
Bent No. 6

5 Main Lanes  
Bent No. 1 Bridge 3959 A  
Bent No. 6 Bridge 3959 B



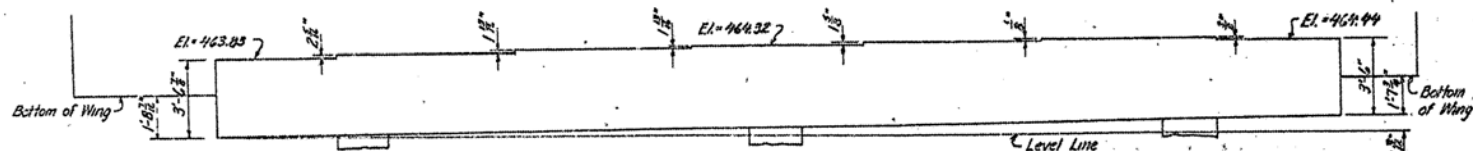
PLAN

Place type C standard bridge name plate on right hand turnout past end of bridge 3959 A and beginning of bridge 3959 B.



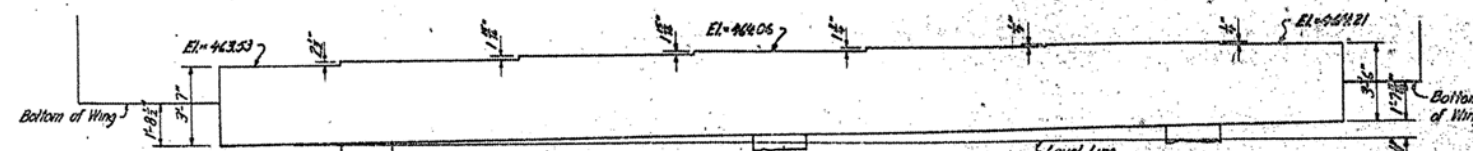
ELEVATION  
BENT NO. 1 BRIDGE 3959 A

Note: View looking back in stationing.



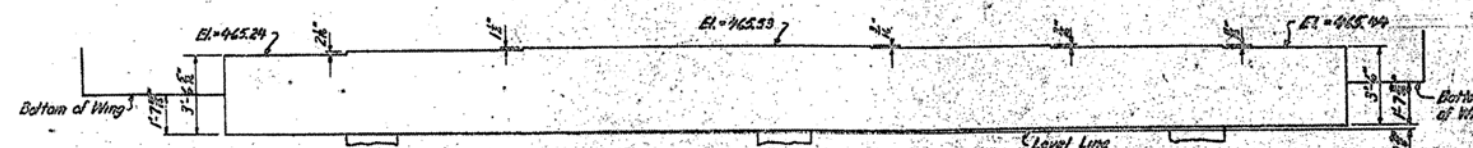
CAP DIMENSIONS  
BENT NO. 6 BRIDGE 3959 A

Note: View looking forward in stationing.



CAP DIMENSIONS  
BENT NO. 1 BRIDGE 3959 B

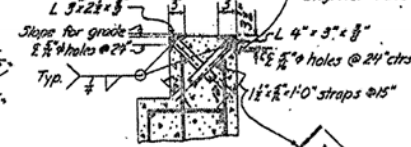
Note: View looking back in stationing.



CAP DIMENSIONS  
BENT NO. 6 BRIDGE 3959 B

Note: View looking forward in stationing.

For details see Detail B  
Dwg. No. 14990 B Rev.



DETAIL A  
Scale: 3/4\"/>

Note: See Dwg. 14990 B Rev. for alternate anchor details.

	Bridge 3959 A	Bridge 3959 B
	Bent 1	Bent 6
V	1-4 1/2"	1-4 1/2"
a	3-8 1/2"	3-8 1/2"
b	3-8 1/2"	3-8 1/2"
c	3-8 1/2"	3-8 1/2"
d	3-8 1/2"	3-8 1/2"
e	2-9 1/2"	2-9 1/2"
f	2-9 1/2"	2-9 1/2"
g	2-11"	2-11"
h	9-0 1/2"	8-1 1/2"
k	3-0 1/2"	3-0 1/2"
l	3-1 1/2"	3-1 1/2"

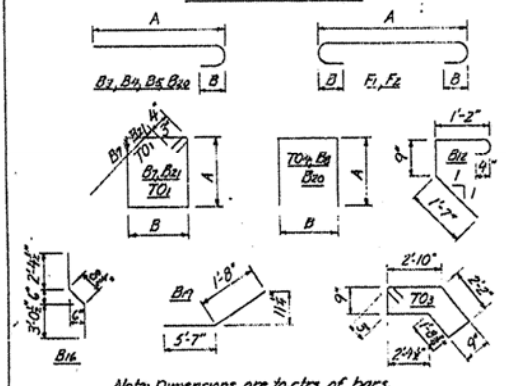
FED. ROAD DIST. NO.	STATE	FED. AID PROJ. NO.	SHEET NO.	TOTAL SHEETS
6	ARK.			
JOB NO.	BB0407	126	464	
A&B3959 - END BENTS - 48432				

BAR LIST EACH BENT

Mark	Pin Dia.	A	B	Bar Size	No. Required	Length
B1 Str.	-	-	-	8	4	39' 4"
B2 Str.	-	-	-	7	6	26' 6"
B3 9"	36'-5"	10"	9	3	37'-8"	
B4 9"	17'-8"	10"	9	3	18'-11"	
B5 10"	15'-1"	11"	10	8	16'-6"	
B6 Str.	-	-	-	8	2	15'-0"
B7 1 1/2"	3'-1 1/2"	1'-11 1/2"	4	64	10'-9"	
B8 1 1/2"	3'-1 1/2"	1'-11 1/2"	4	5	8'-2"	
B9 Str.	-	-	-	4	4	26'-8"
B10 Str.	-	-	-	4	18	25'-10"
B11 Str.	-	-	-	4	96	5'-3"
B12 1 1/2"	-	-	-	4	48	4'-11"
B13 Str.	-	-	-	4	2	5'-9"
B14 Str.	-	-	-	4	1	6'-5"
B15 Str.	-	-	-	4	11	8'-5"
B16 1 1/2"	-	-	-	4	12	6'-1"
B17 Str.	-	-	-	4	14	6'-0"
B18 Str.	-	-	-	4	3	5'-4"
B19 1 1/2"	-	-	-	4	11	7'-3"
B20 1 1/2"	1'-6"	2'-9"	4	2	5'-3"	
B21	See Variable Bars					
F1	3 3/8"	7'-0"	5"	5	27	8'-3"
F2	3 3/8"	4'-6"	5"	5	42	5'-9"
F3	See Variable Bars					
T01	1 1/2"	2'-9"	9"	3	4	7'-5"
T02 Str.	-	-	-	5	19	5'-0"
T03 1 1/2"	-	-	-	3	4	11'-0"
T04 1 1/2"	3'-4 1/2"	8"	5	1	7'-4"	
B24 Str.	-	-	-	8	2	20'-3"

VARIABLE BARS	Br. 3959 A Bent No. 1	Br. 3959 B Bent No. 6	Br. 3959 A Bent No. 6	Br. 3959 B Bent No. 1
F3a	8"	7'-9 1/2"	9"	8
F3a to Base	1 1/2"	Varies 1'-6 1/2" to 2'-4 1/2" by 2 1/2"	1'-11"	4
F3b	8"	6'-10 1/2"	9"	8
F3b to Base	1 1/2"	Varies 1'-6 1/2" to 2'-2" by 2 1/2"	1'-11"	4

BENDING DIAGRAM



Note: Dimensions are to ctrs. of bars.

GENERAL NOTES

All concrete to be class 'S'.

Reinforcing steel to be deformed bars of intermediate or hard grade. Shop lists and bending diagrams shall be submitted and approval secured before fabrication is begun.

For additional general notes see Dwg. No. 15345

For details of superstructure see Dwg. Nos. 14990 B Rev., 15349 and 15350.

DETAILS OF END BENTS  
U.S. HIGHWAY 64 INTERCHANGE  
ARK. RIVER BRIDGE - JCT. I-40  
CRAWFORD COUNTY  
INT. ROUTE 540 SEC. 1

ARKANSAS STATE HIGHWAY COMMISSION  
LITTLE ROCK, ARK.

DESIGNED BY: TLL DATE: 8-2-68  
CHECKED BY: TLL DATE: 8-5-68  
DRAWING NO. A&B3959 DRAWING NO. 48432

FOR INFORMATION ONLY

Revised Reinforcing Steel: 1-81-66 TLL  
Checked: 8-5-66 TLL

\* Revision: Turnout Posts & No. of  
T02 bars 10/16/67 4-7-67

Scale: 1/2\"/>

G

**ARKANSAS STATE HIGHWAY COMMISSION**  
LITTLE ROCK, ARK.

DRAWN BY: TIL DATE: 11-18-64  
 TRACED BY: \_\_\_\_\_ DATE: \_\_\_\_\_  
 CHECKED BY: RA DATE: 2-19-65

SCALE: 1"=20'

BRIDGE NO. B3959 DRAWING NO. 48431