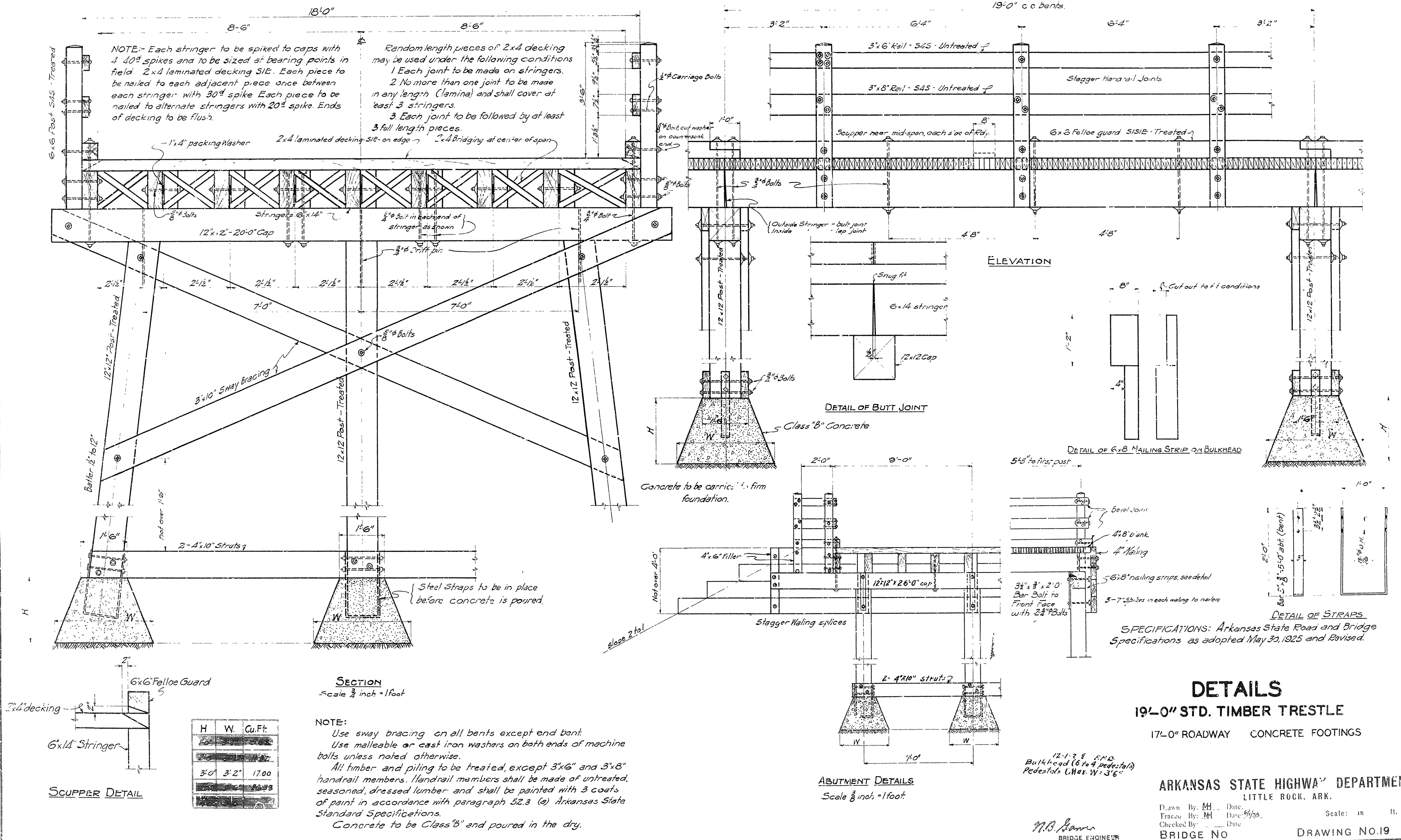


NOTE:  
MEASUREMENT FOR PAYMENT OF 2 X 4 LAMINATED DECKING  
SHALL BE COMPUTED AT 72 (SEVENTY-TWO) FT.B.M. PER  
LINEAL FOOT.

FISCAL YEAR	JOB NUMBER	SHEET NO.	TOTAL SHEETS



ARKANSAS STATE HIGHWAY DEPARTMENT  
LITTLE ROCK, ARK.

Drawn By: M.H. Date: 8/1/33  
Traced By: M.H. Date: 8/1/33  
Checked By: Date:   
Scale: in ft.  
BRIDGE NO. DRAWING NO.19

STATE OF ARKANSAS  
STATE HIGHWAY DEPARTMENT

PLAN OF PROPOSED BRIDGE  
FT. SMITH - HARTFORD ROAD  
SEBASTIAN COUNTY

ROUTE 45 SEC. 1  
JOB NO. 440  
FEDERAL AID PROJECT No.

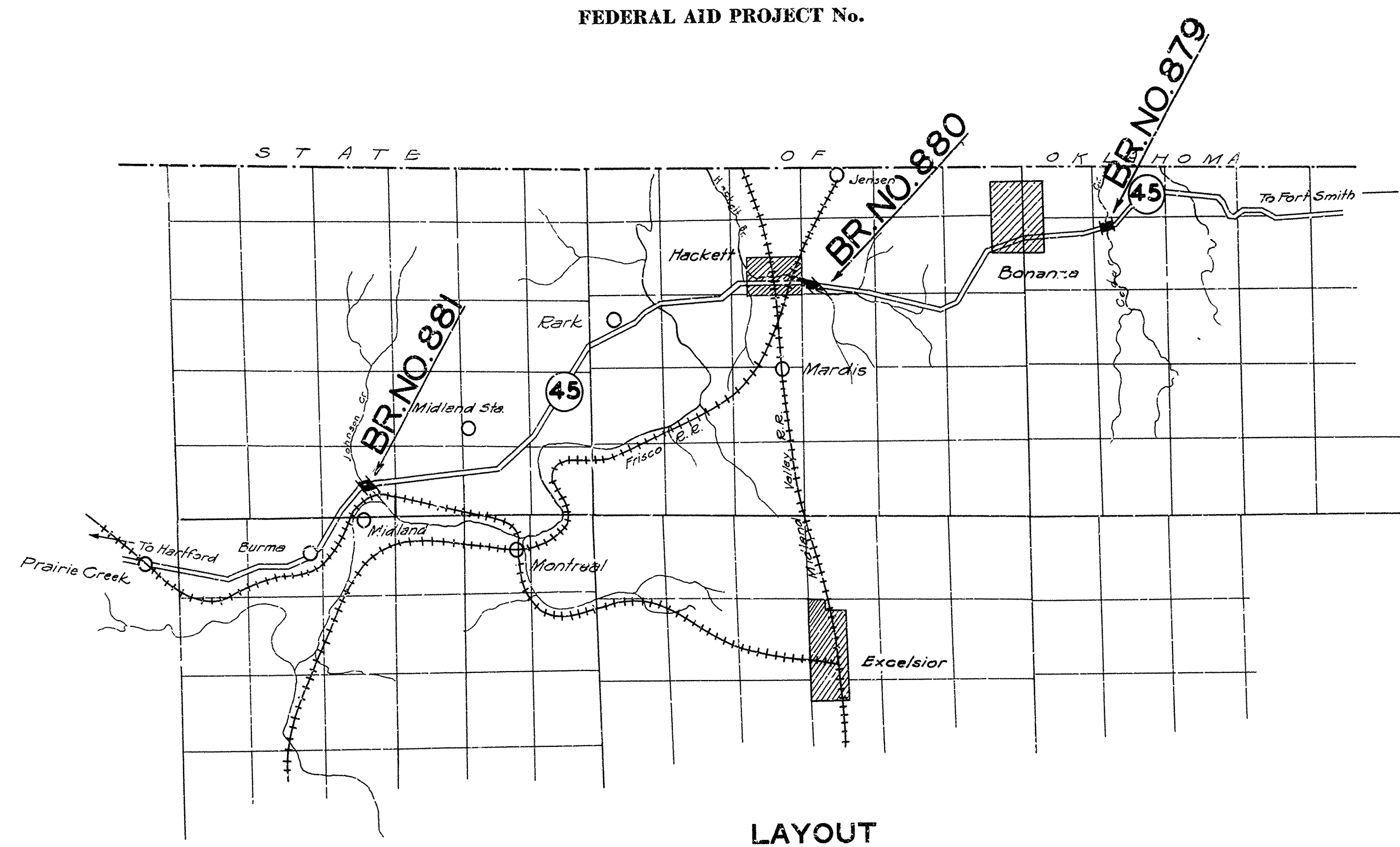
FISCAL YEAR	Job No.	SHEET No.	TOTAL SHEETS
1928	440	1	6

INDEX OF SHEETS

SHEET No.	DRWG No.	TITLE
1	856	
2	857	LAYOUT BR. No. 879
3	858	LAYOUT BR. No. 880
4	859	LAYOUT BR. No. 881
5	860	DETAILS OF BRs Nos. 880 & 881
6	19	STANDARD 19'0" TIMBER TRESTLE

QUANTITIES

Item	Description	Quantity	Unit
12	Earth Excavation	4933	cuyds
13	Dry Excav. for Struct.	74	" "
13	Wet " " "	286	" "
13	Rock " " "	12.5	" "
52	Untreated Bridge Timber	2.264	M.F.B.M.
52	Treated " "	66.742	" "
54	Class "B" Conc.	56.89	cuyds.



LAYOUT  
Scale:

GROSS LENGTH OF PROJECT  $3\frac{1}{2}'' = 0.5928$  Mi.  
NET LENGTH OF PROJECT

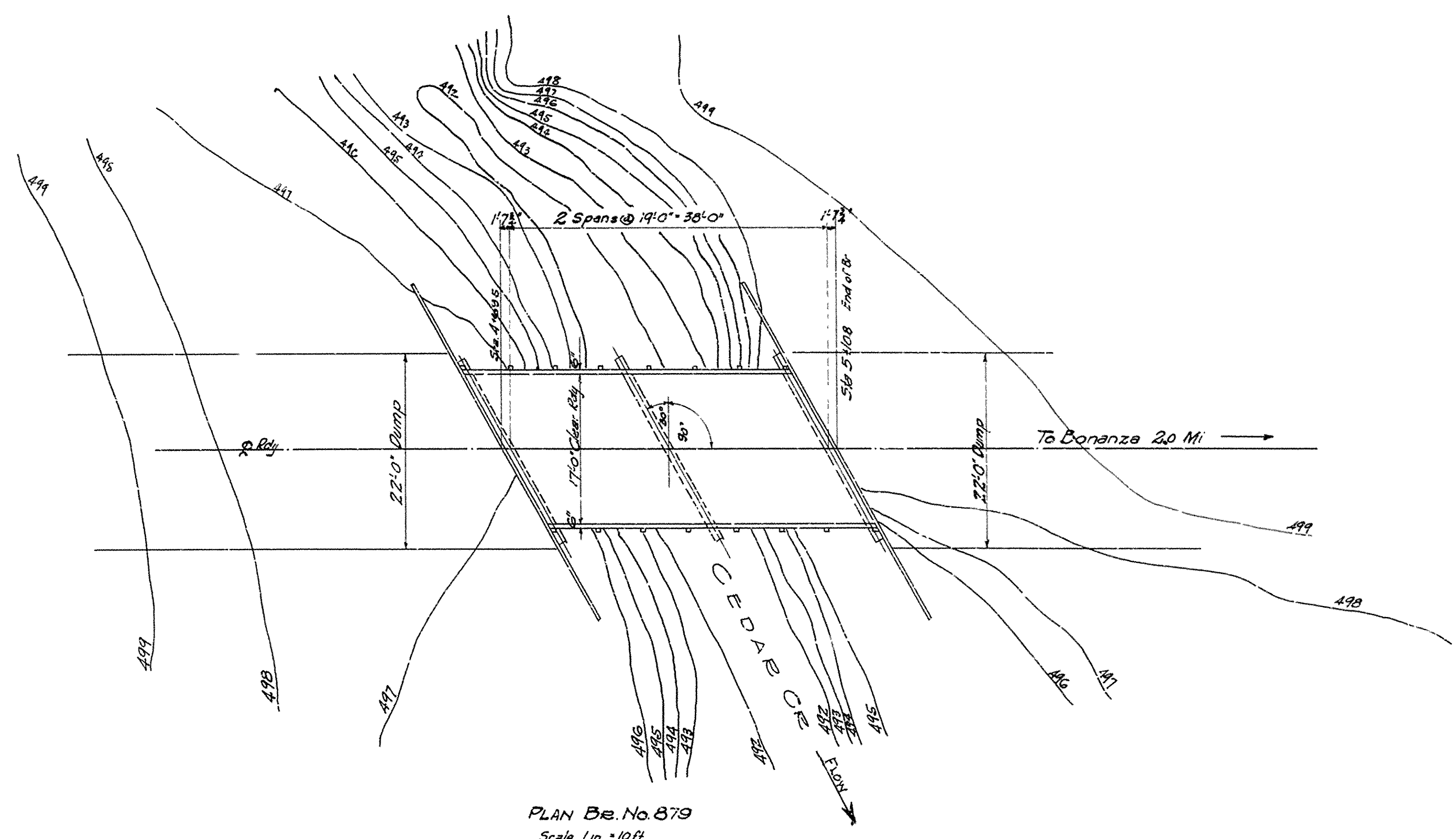
APPROVED  
COMMISSIONER - STATE LANDS, HIGHWAY & IMPROVEMENT  
APPROVED  
STATE HIGHWAY ENGINEER  
RECOMMENDED FOR APPROVAL  
DISTRICT ENGINEER - U. S. BUREAU OF PUBLIC ROADS  
RECOMMENDED FOR APPROVAL  
CHIEF ENGINEER - U. S. BUREAU OF PUBLIC ROADS  
APPROVED  
DIRECTOR - U. S. BUREAU OF PUBLIC ROADS

M.B. Garrow  
BRIDGE ENGINEER

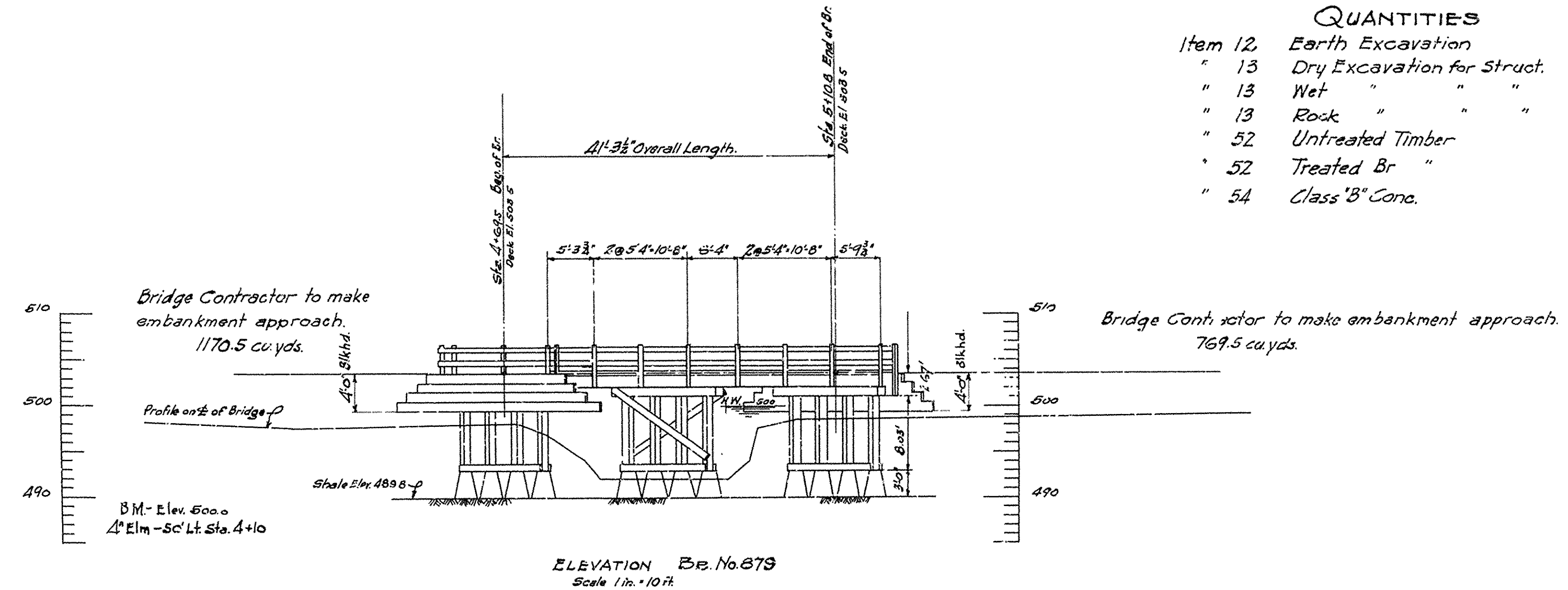
BRIDGE No. 679-880-881 DRAWING NO. 856



FISCAL YEAR	JOB NUMBER	SHEET NO.	TOTAL SHEETS
1928	440	2	6



QUANTITIES			
Item	Description	Quantity	Unit
12	Earth Excavation	19.10	cu yds
13	Dry Excavation for Struct.	30.0	" "
13	Wet " " "	121.	" "
13	Rock " " "	2.3	" "
52	Untreated Timber	.312	M.F.B.M.
52	Treated Br "	9.767	" "
54	Class "B" Conc.	7.55	cu yds



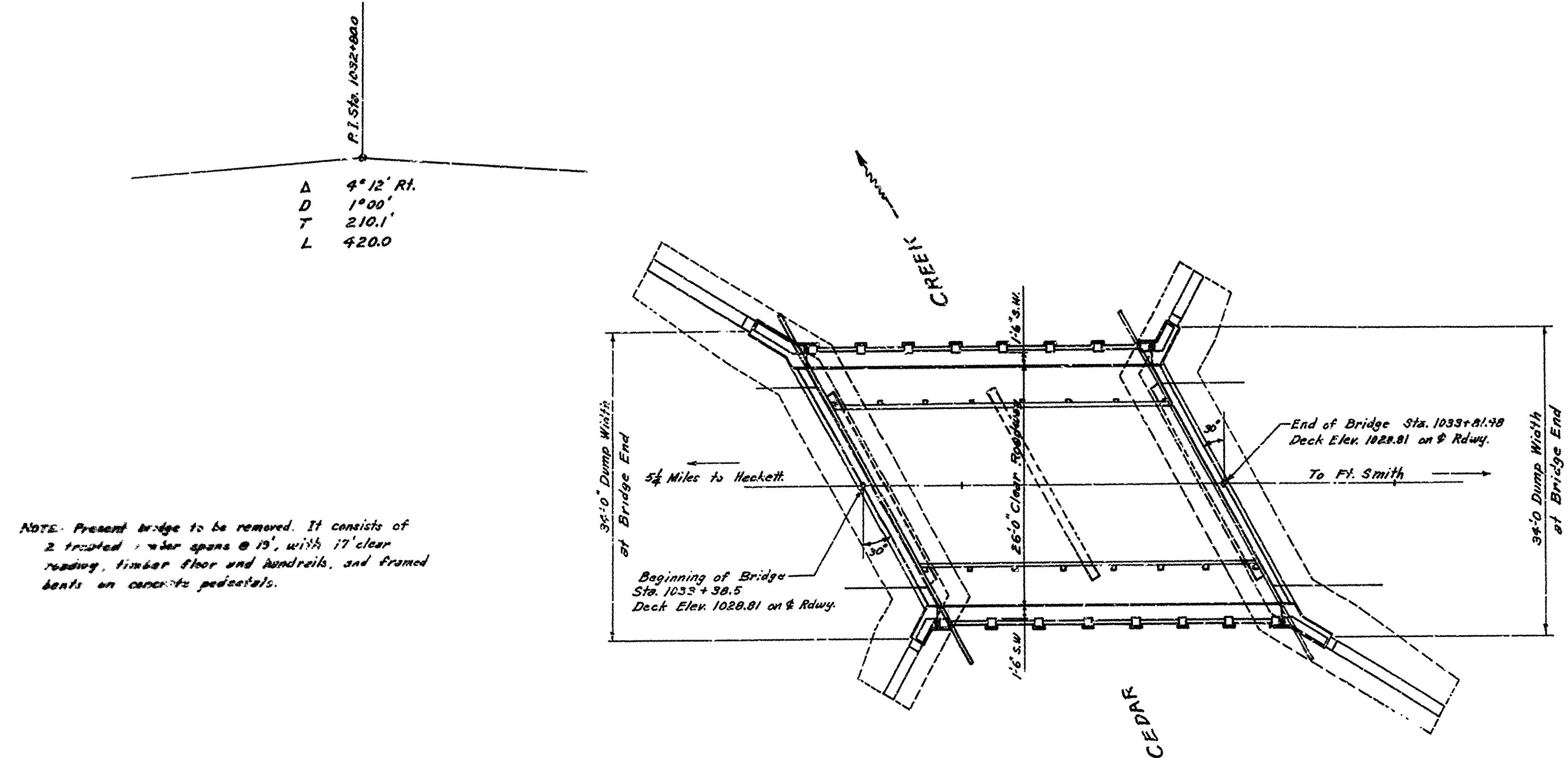
For Details see Drawgs. Nos. 13 & 860.

LAYOUT OF BRIDGE  
OVER CEDAR CREEK  
Sebastian County

ROUTE 46 SEC. 1  
ARKANSAS STATE HIGHWAY DEPARTMENT  
LITTLE ROCK, ARK.  
Drawn By: *M.H.* Date: *5/1/28*  
Traced By: *M.H.* Date: *5/1/28*  
Checked By: *M.H.* Date: *5/1/28*  
Scale: 1 in. = 10 ft.  
BRIDGE NO. 879 DRAWING NO. 857

*N.B. Garner*  
BRIDGE ENGINEER

FED. ROAD DIST. NO.	STATE	PROJECT NO.	FISCAL YEAR	SHEET NO.	TOTAL SHEETS
6	ARK.			1	5
STATE JOB NO. 4266					



**GENERAL NOTES**

All concrete to be poured in the dry. Exposed corners to be chamfered  $\frac{3}{4}$ " unless otherwise noted.

Abutment caps and backwall to be Class "A" Concrete. Remainder of abutments to be Cement Rubble Masonry.

Excavate to rest lines a minimum of 1'-6" into shale for abutment footings. If suitable foundation material is encountered at alterations other than that shown, construct abutments to batters shown on detail plans.

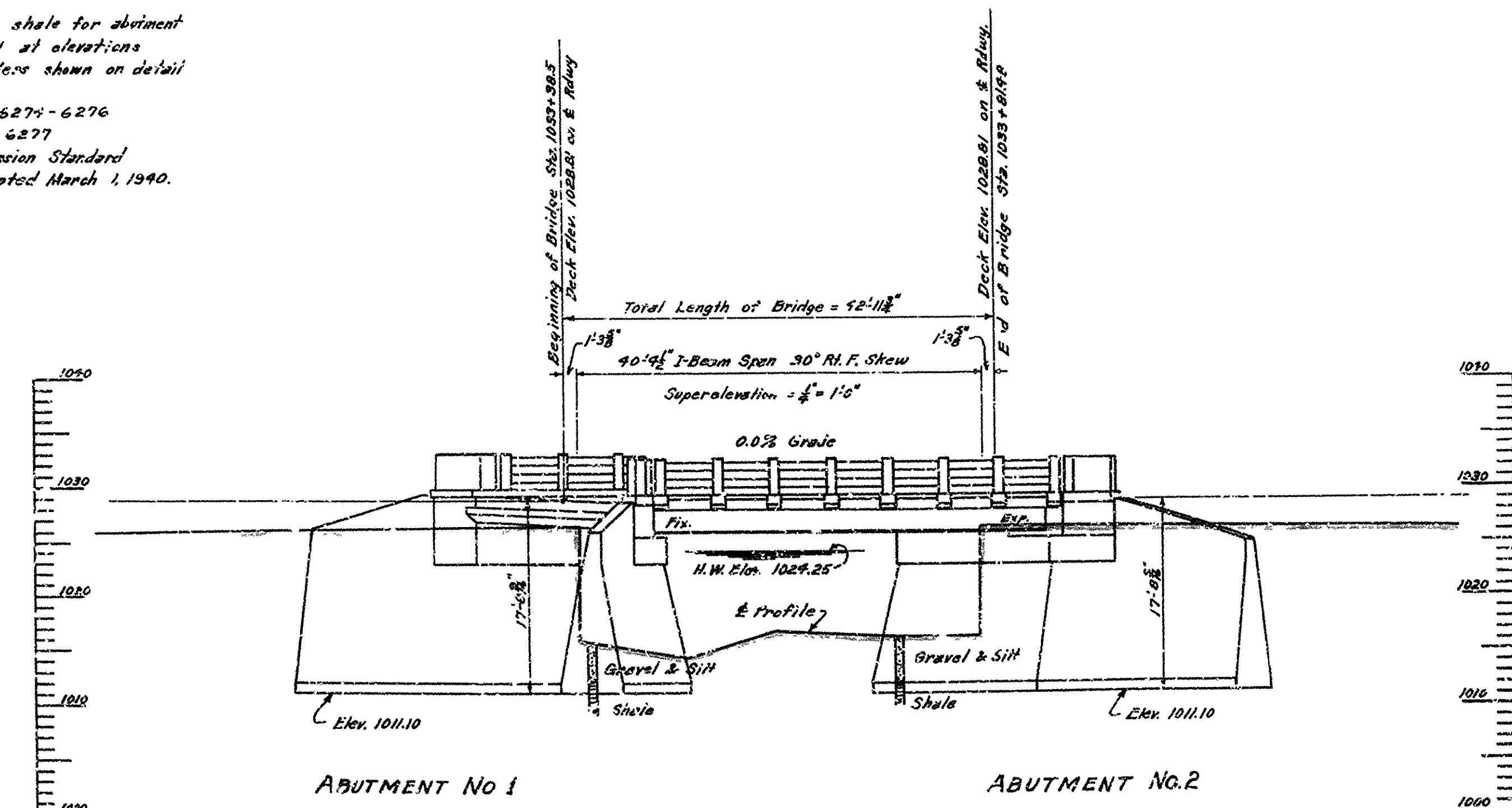
For details of Abutments see Drawings No. 6274-6276

For details of Superstructure see Drawing No. 6277

Specifications: Arkansas State Highway Commission Standard Specifications for Road and Bridge Construction, adopted March 1, 1940.

**PLAN**

NOTE: The bridge is to be constructed parallel to a  $42^{\circ}11\frac{1}{2}'$  chord thru the bridge ends.



**ELEVATION**

**QUANTITIES**

ITEM NO.	ITEM	QUANTITY		TOTAL	UNIT
		ABUT. NO. 1	ABUT. NO. 2		
103	Dry Excavation for Structures	206	206	412	Cu.Yd.
103	Wet Excavation for Structures	92	92	184	Cu.Yd.
103	Solid Rock Excavation Structures	21	21	42	Cu.Yd.
S.P.#802	Class "A" Concrete for Bridges	160	160	320	Cu.Yd.
S.P.#803	Class "S" Concrete for Bridges	—	279	279	Cu.Yd.
S.P.#803	Reinforcing Steel	1640	1610	3250	Lb.
805	Concrete Railing	11	11	22	Lin.Ft.
S.P.#807	Structural Steel in Beam Spans (At Highway Shape)	—	18,040	18,040	Lb.
S.P.#807	Structural Steel in Beam Spans (New)	575	575	1,150	Lb.
809	Cement Rubble Masonry	162	161	323	Cu.Yd.

LAYOUT OF  
BRIDGE OVER CEDAR CREEK  
HACKETT-NORTH ROAD  
SEBASTIAN COUNTY  
ROUTE 45 SEC. 1

ARKANSAS STATE HIGHWAY COMMISSION  
LITTLE ROCK, ARK.

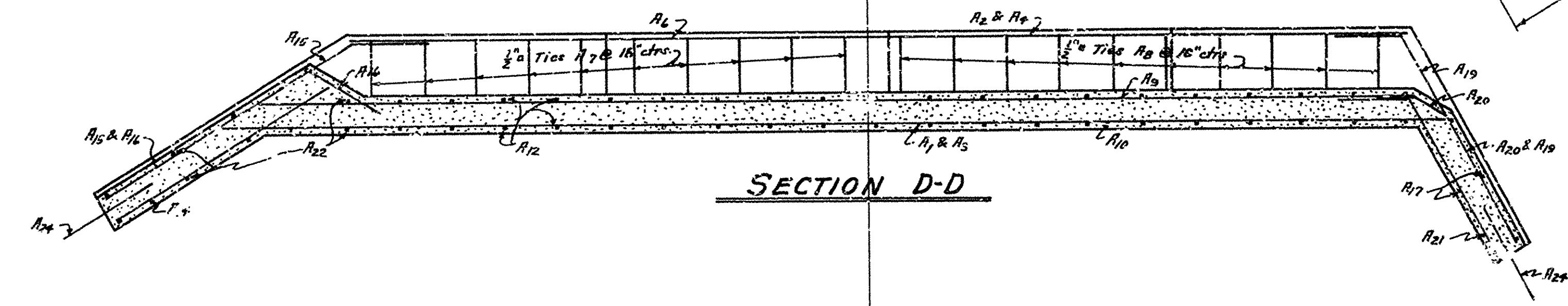
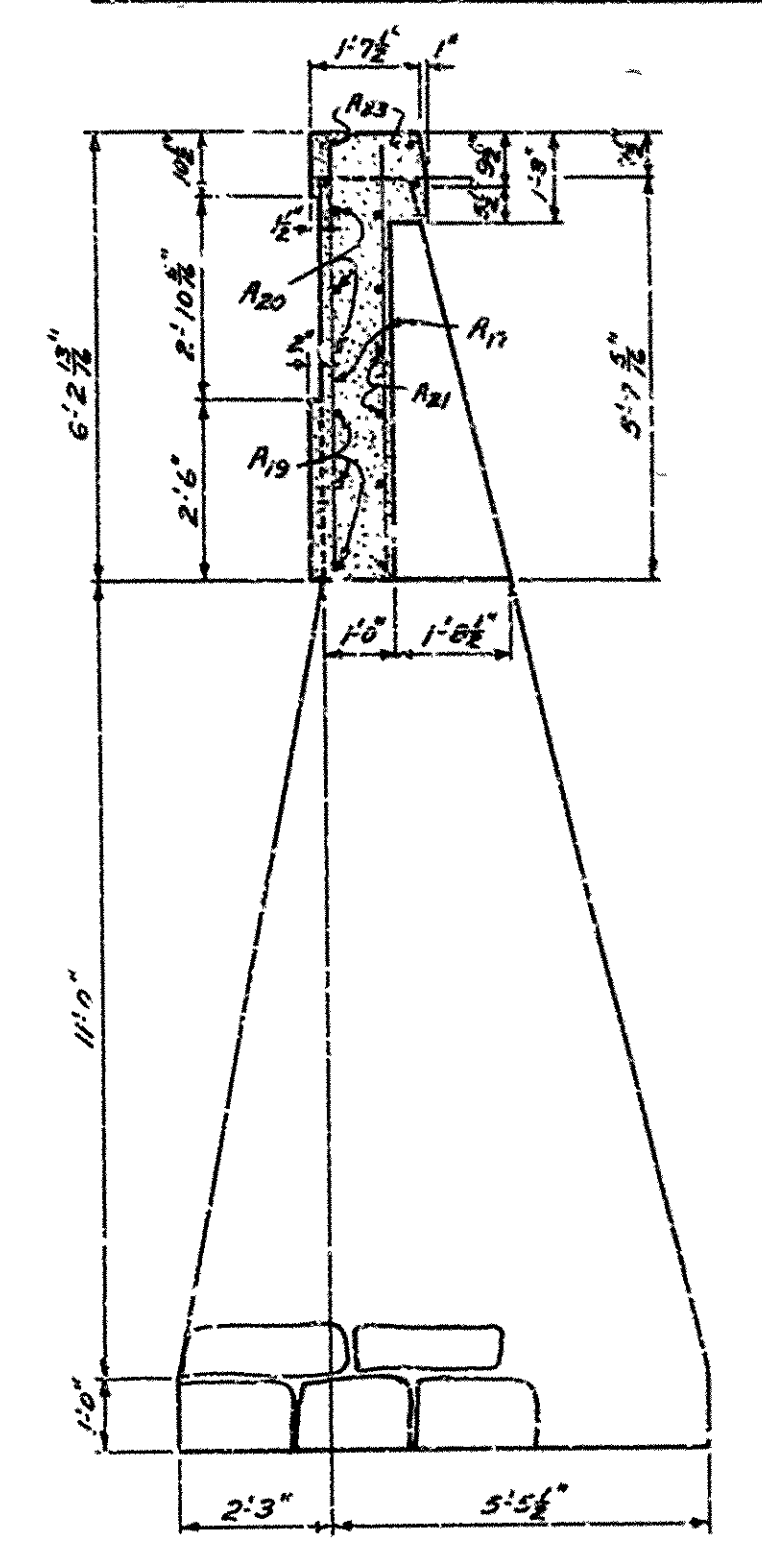
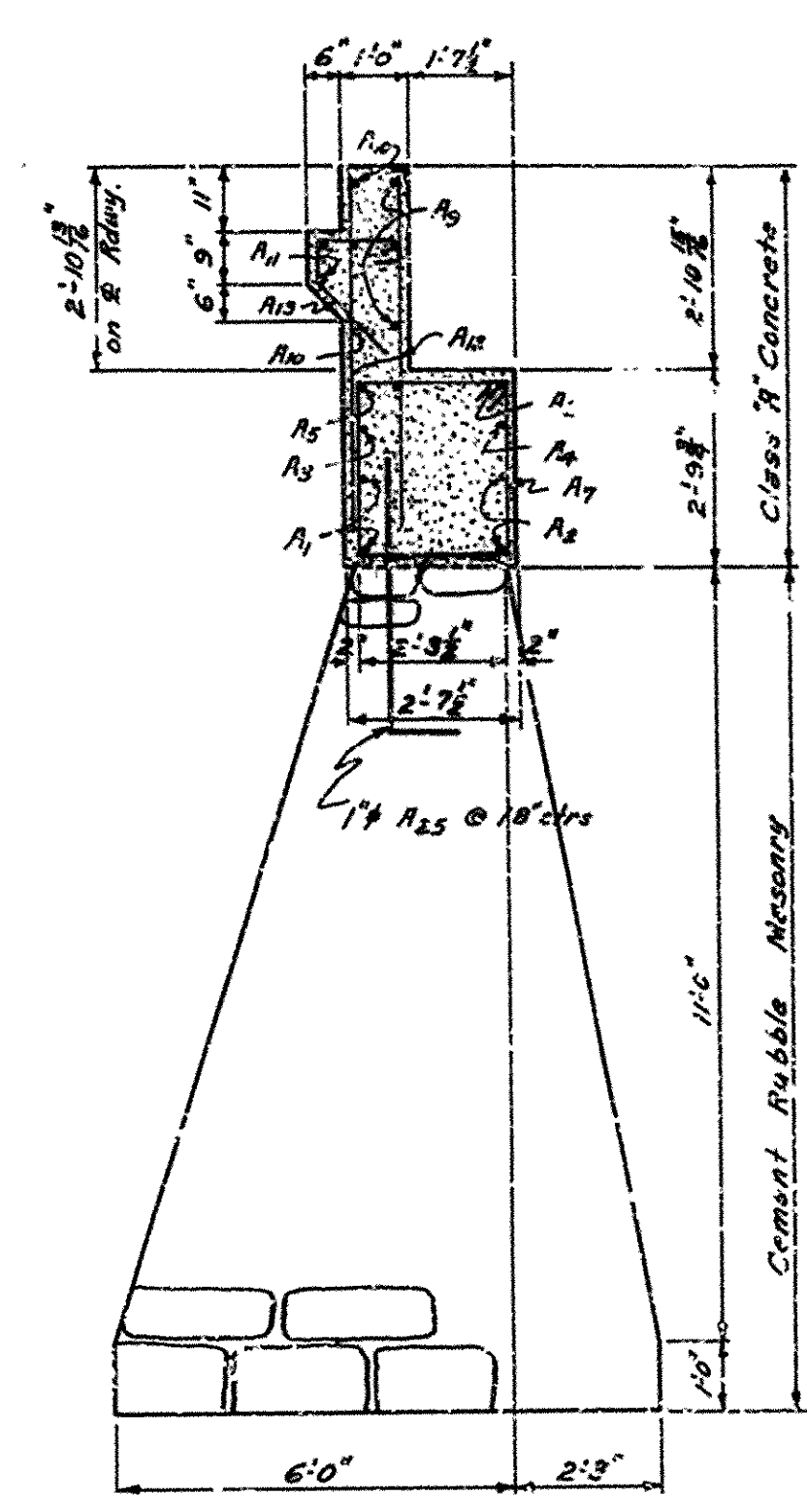
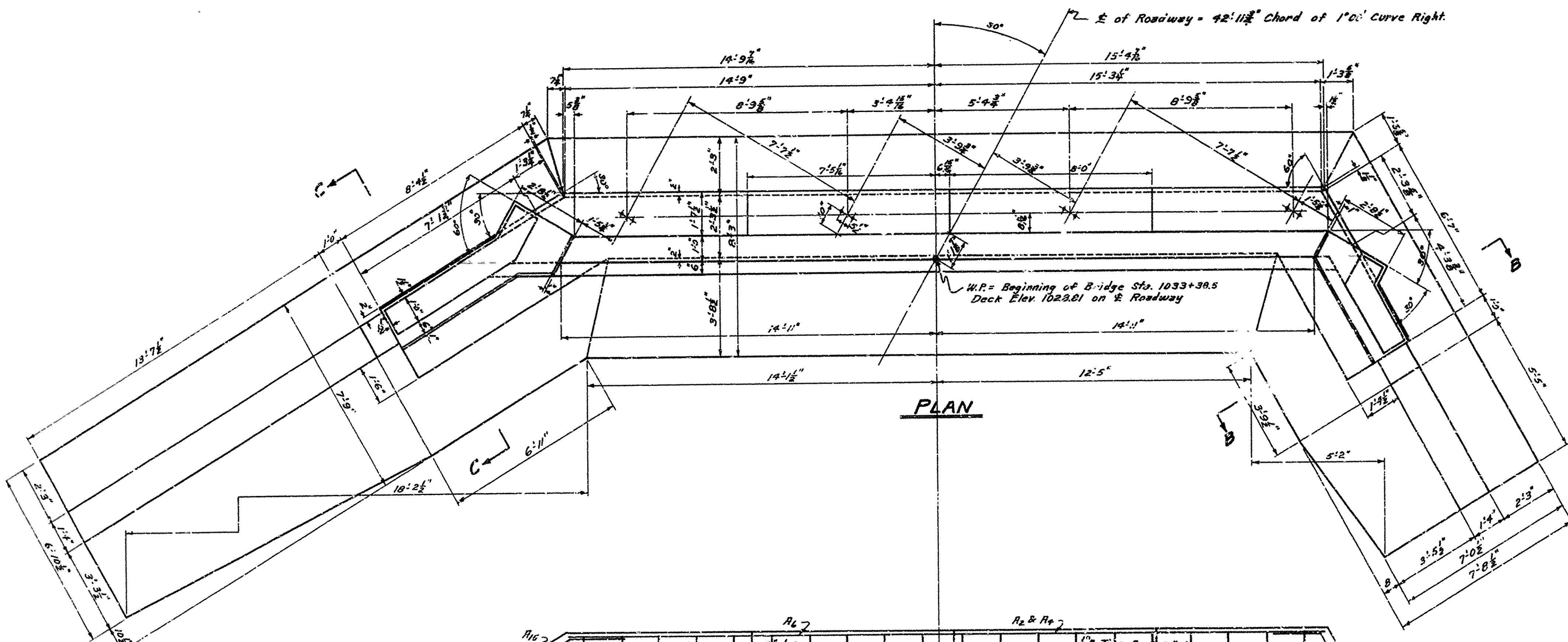
Drawn By: E.A.S. Date: 11-26-41  
Traced By: W.C.H. Date: 11-26-41  
Checked By: \_\_\_\_\_ Date: \_\_\_\_\_

BRIDGE NO. 879-A DRAWING NO. 6273

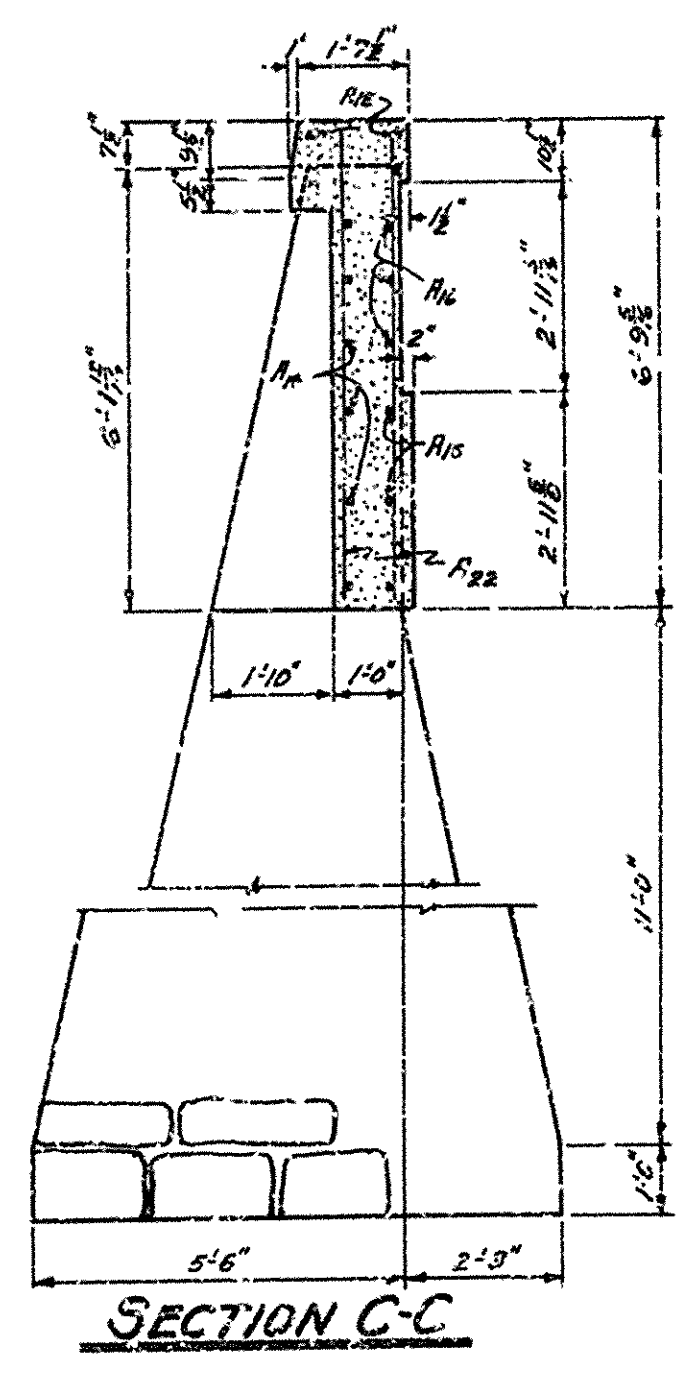
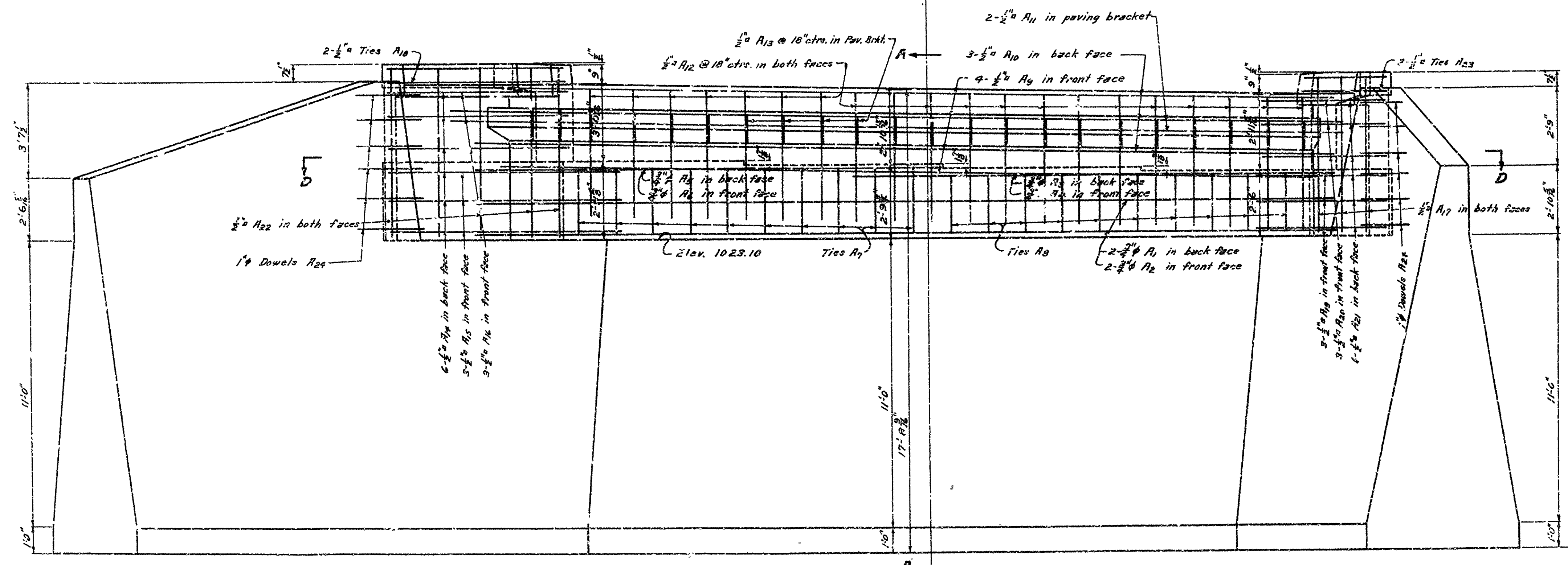
Scale: 1 in. = 10 ft.



P.C. ROAD DIST. NO.	STATE	PROJECT NO.	FISCAL YEAR	SHEET NO.	TOTAL SHEETS
6	ARK.			2	5
STATE JOB NO. 4266					



**GENERAL NOTES**  
All concrete to be Class "A".  
All exposed concrete corners to be chamfered  $\frac{3}{8}$ " unless otherwise noted.  
See Drawing No. 6276 for Bar List and detail of Turnouts.  
For details of superstructure see Drawing No. 6277.  
For detail of sidewalk and roadway expansion devices, see Drawg. No.

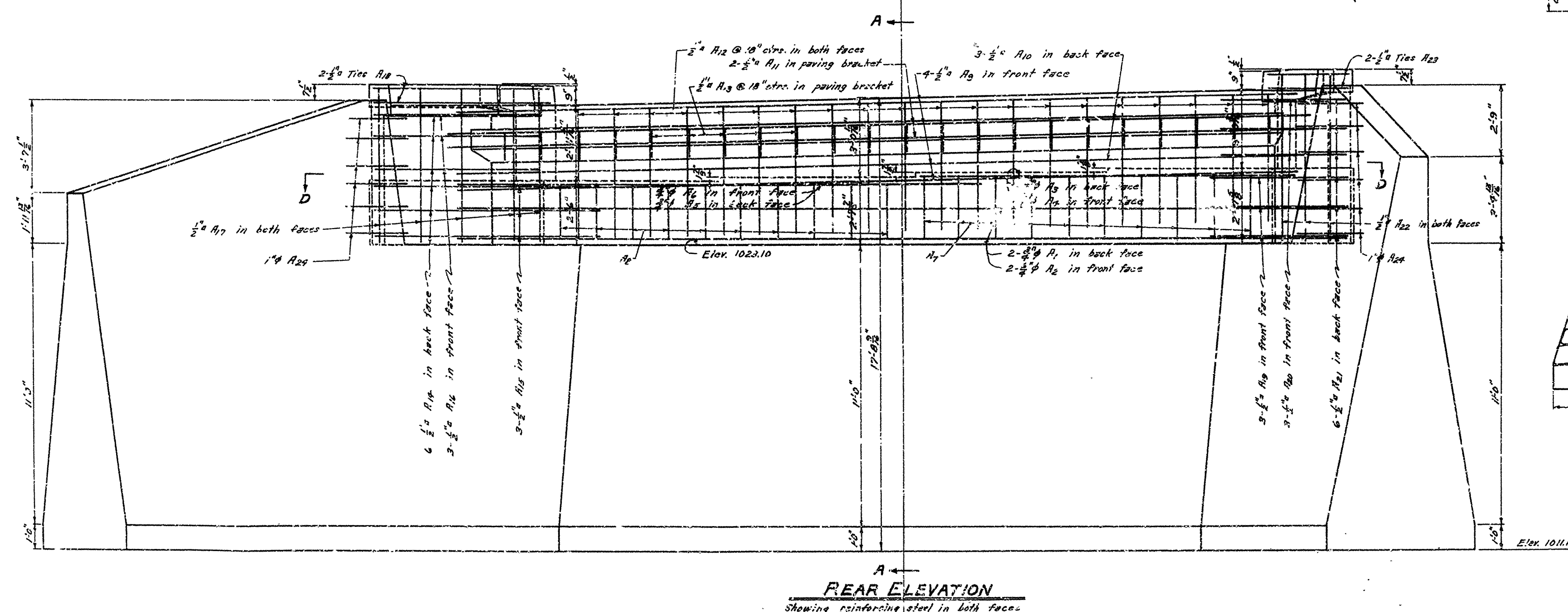
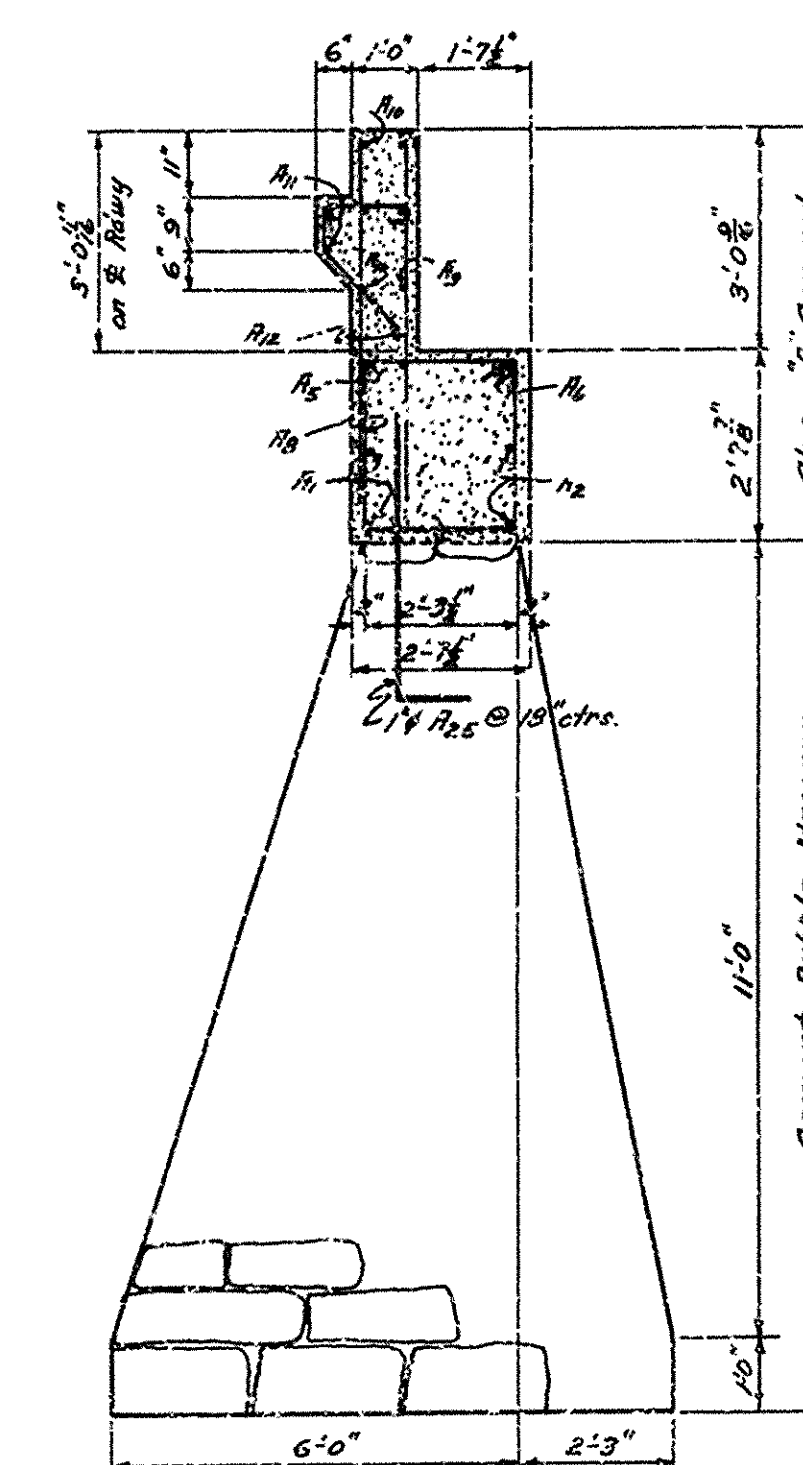
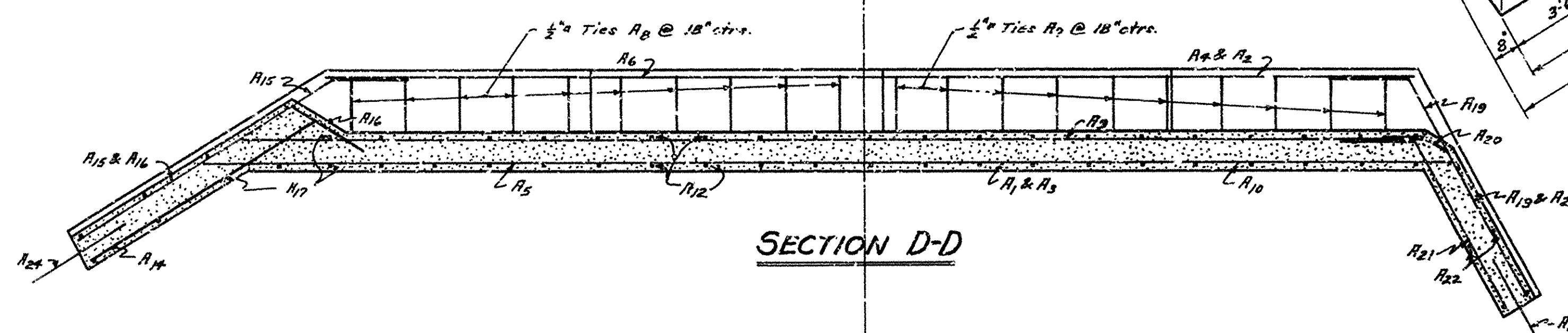
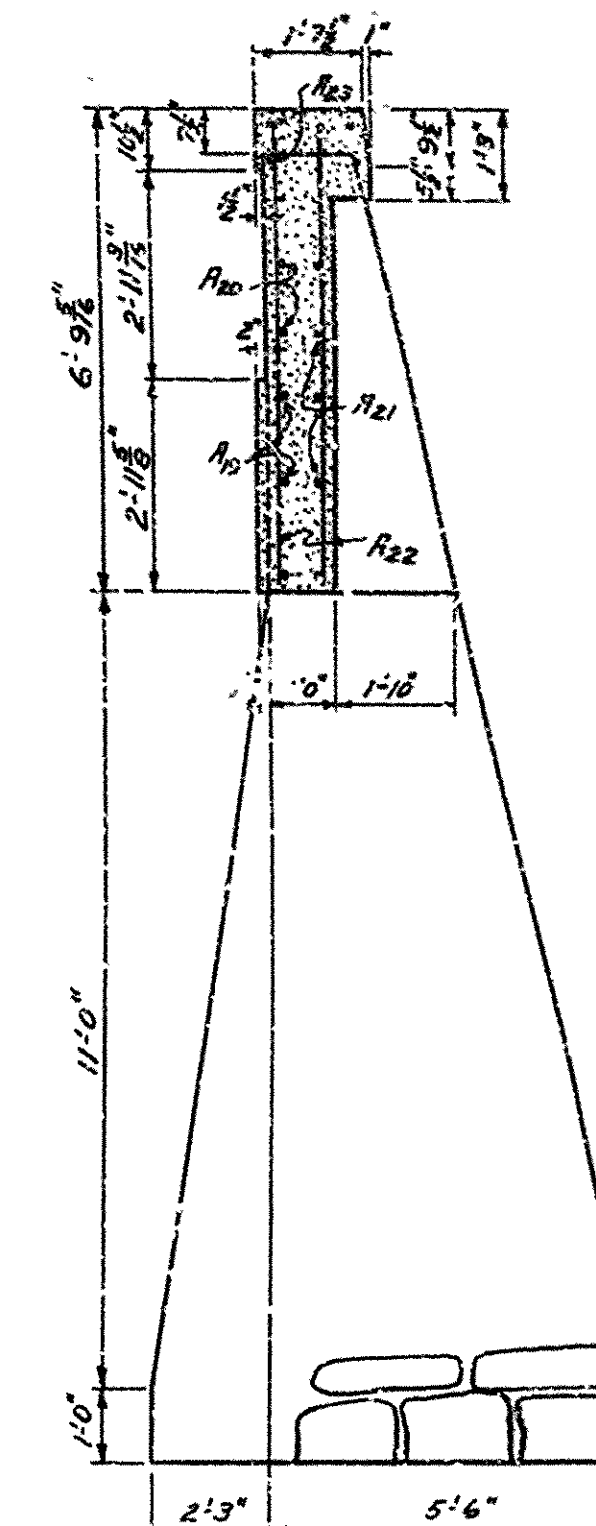
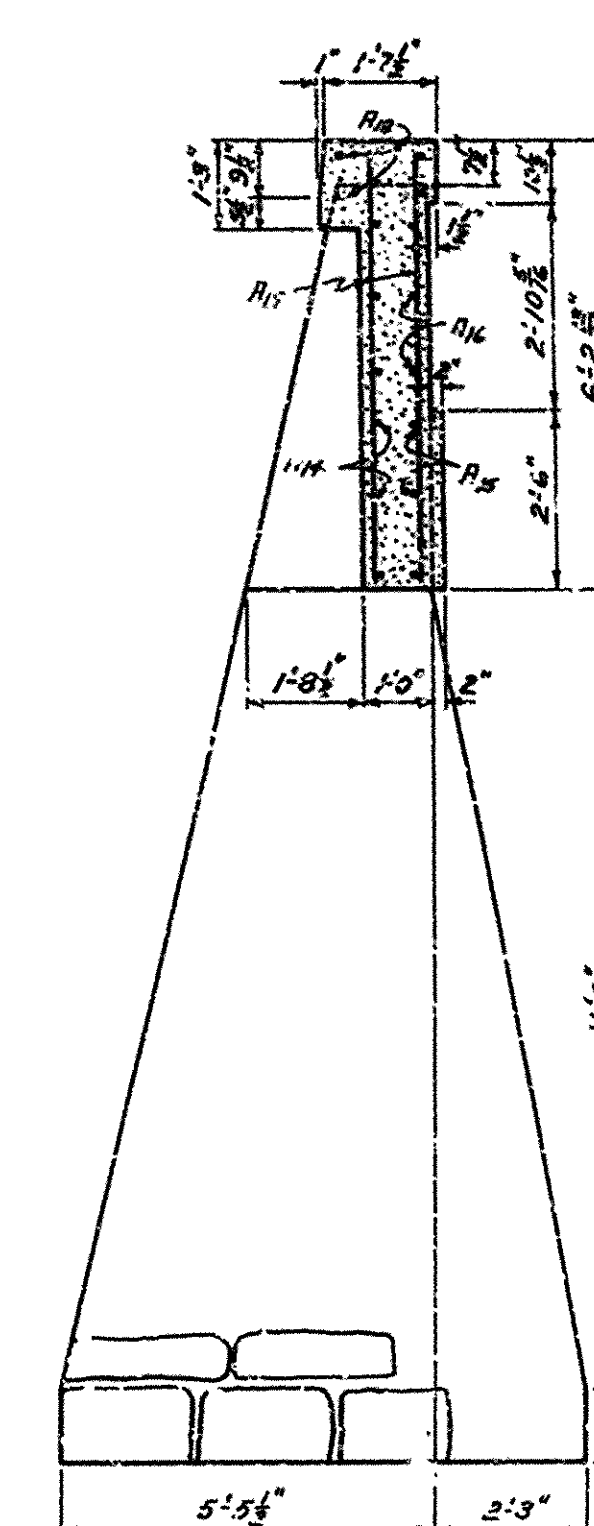
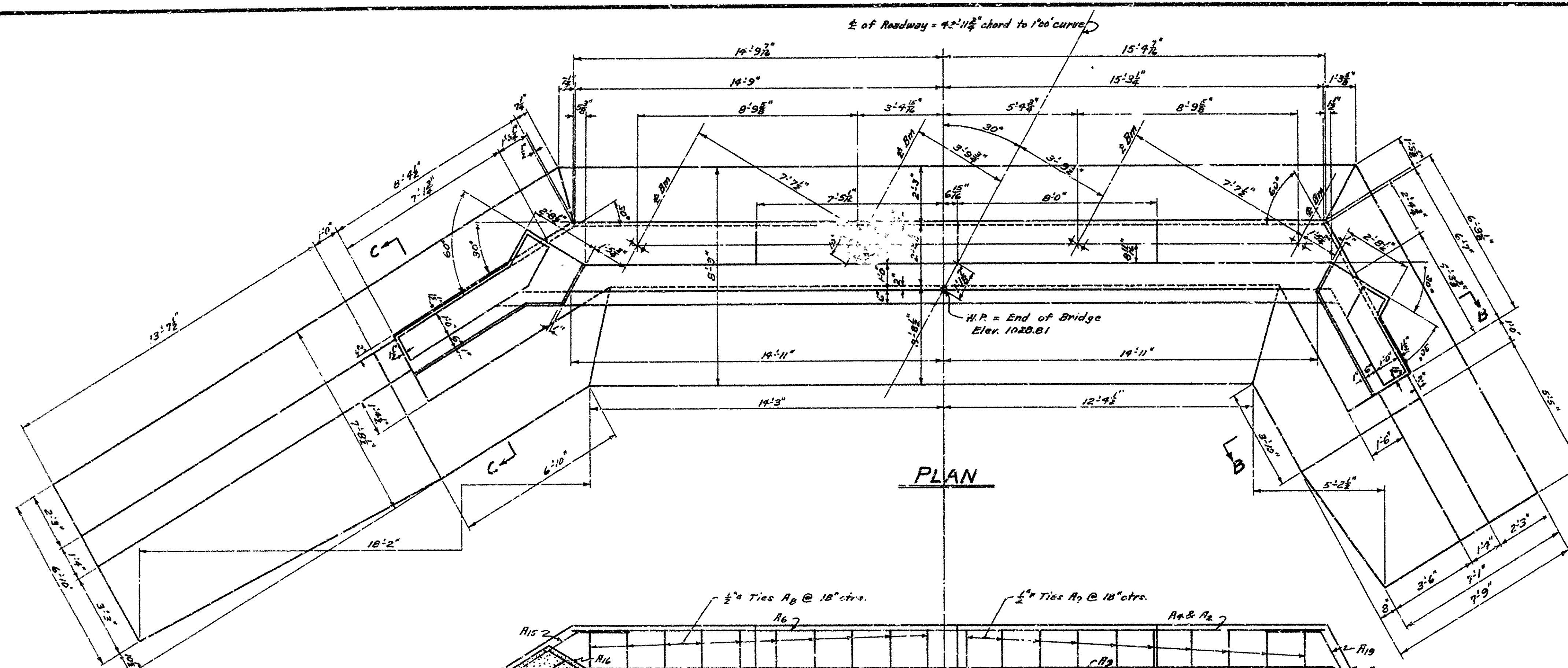


DETAILS OF ABUTMENT NO. 1  
BRIDGE OVER CEDAR CREEK  
HACKETT - NORTH ROAD  
SEBASTIAN COUNTY  
ROUTE 45 SEC. 1  
ARKANSAS STATE HIGHWAY COMMISSION  
LITTLE ROCK, ARK.  
Drawn By: E.B.S. Date: 11-10-41  
Traced By: W.C.H. Date: 11-26-41  
Checked By: \_\_\_\_\_ Date: \_\_\_\_\_  
BRIDGE NO. 879-A DRAWING NO. 6274

W.C.H.  
PRINCIPAL HIGHWAY ENGINEER (WRDS)



FED. ROAD DIST. NO.	STATE	PROJECT NO.	FISCAL YEAR	SHEET NO.	TOTAL SHEETS
6	ARK.				
STATE JOB NO. 4266				3	



### GENERAL NOTES

All concrete to be Class "A". All exposed corners to be chamfered  $\frac{3}{4}$ " unless otherwise noted. See Drawing No. 6216 for Bar List and details of Turnouts. For details of superstructure see Drawing No. 6217. For detail of sidewalk and roadway expansion devices see Drawing No. 6218.

DETAILS OF ABUTMENT NO.2  
BRIDGE OVER CEDAR CREEK  
HACKETT - NORTH ROAD  
SEBASTIAN COUNTY  
ROUTE 45 SEC. 1

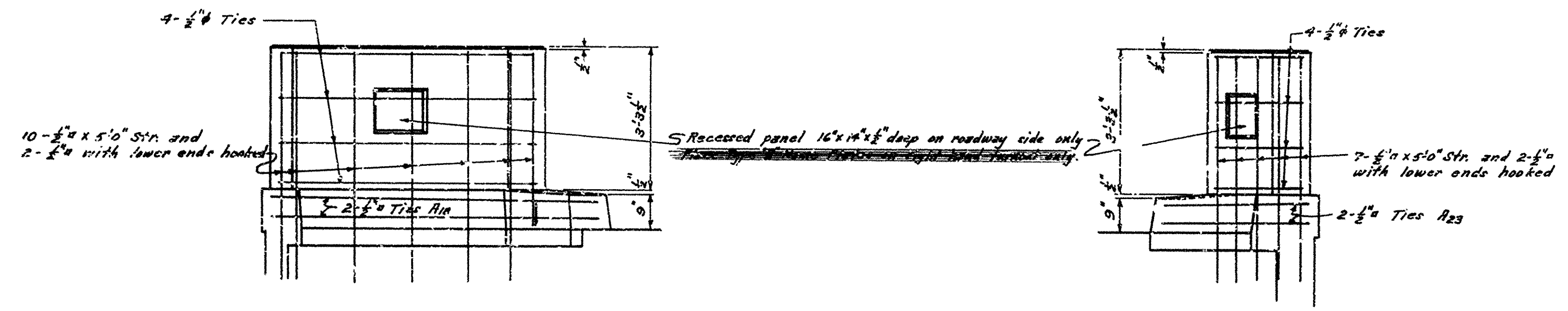
ARKANSAS STATE HIGHWAY COMMISSION  
LITTLE ROCK, ARK.

Drawn By: E.B.S. Date: 11-16-41  
Traced By: W.C.H. Date: 11-28-41  
Checked By: \_\_\_\_\_ Date: \_\_\_\_\_

Scale:  $\frac{3}{8}$ " = 1 ft

BRIDGE NO. 875-A DRAWING NO. 6275

*M. B. Loney*  
PRINCIPAL HIGHWAY ENGINEER (BRIDGES)



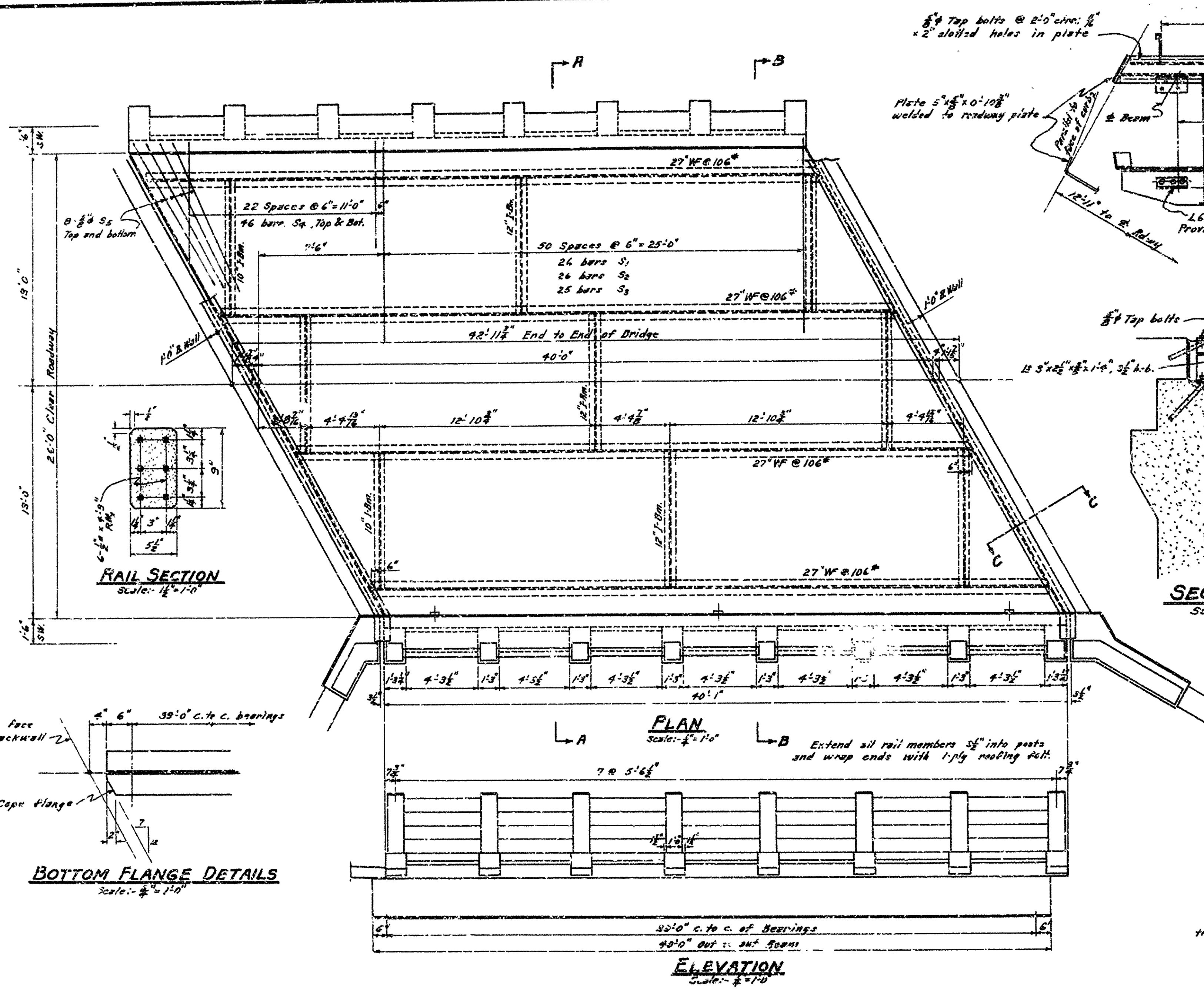
STRAIGHT BARS					BENT BARS					BENDING DIAGRAM	
MARK	SIZE	LENGTH	NUMBER REQ'D ABOVE #1 ABOVE #2		MARK	SIZE	LENGTH	NUMBER REQ'D ABOVE #1 ABOVE #2		A	B
A <sub>1</sub>	$\frac{3}{8}" \phi$	34'-6"	2	2	A <sub>7</sub>	$\frac{1}{2}" \phi$	10'-6"	10	10	2'-6"	2'-4"
A <sub>2</sub>	"	30'-0"	2	2	A <sub>8</sub>	$\frac{1}{2}" \phi$	9'-10"	10	10	2'-2"	2'-4"
A <sub>3</sub>	"	15'-6"	—	1	A <sub>9</sub>	$\frac{1}{2}" \phi$	3'-7"	22	22		
A <sub>4</sub>	"	19'-3"	1	—	A <sub>10</sub>	$\frac{1}{2}" \phi$	10'-5"	3	3	8'-5"	2'-0"
A <sub>5</sub>	"	14'-5"	—	1	A <sub>11</sub>	$\frac{1}{2}" \phi$	9'-10"	3	3	6'-10"	0"
A <sub>6</sub>	"	18'-0"	1	—	A <sub>12</sub>	$\frac{1}{2}" \phi$	18'-8"	2	2		
A <sub>7</sub>	"	22'-0"	—	1	A <sub>13</sub>	$\frac{1}{2}" \phi$	8'-7"	3	3	6'-7"	2'-0"
A <sub>8</sub>	"	16'-6"	1	—	A <sub>14</sub>	$\frac{1}{2}" \phi$	6'-0"	3	3		
A <sub>9</sub>	"	18'-9"	—	1	A <sub>15</sub>	$\frac{1}{2}" \phi$	7'-2"	6	6	5'-2"	3'-0"
A <sub>10</sub>	$\frac{3}{8}" \phi$	15'-0"	1	—	A <sub>16</sub>	$\frac{1}{2}" \phi$	12'-5"	2	2		
A <sub>11</sub>	$\frac{1}{2}" \phi$	32'-8"	4	4	A <sub>17</sub>	$\frac{1}{2}" \phi$	5'-0"	22	22		
A <sub>12</sub>	"	34'-6"	3	3	A <sub>18</sub>	1" $\phi$					
A <sub>13</sub>	"	35'-3"	2	2							
A <sub>14</sub>	"	5'-0"	40	40							
A <sub>15</sub>	"	7'-3"	6	6							
A <sub>16</sub>	"	6'-0"	6	10							
A <sub>17</sub>	$\frac{1}{2}" \phi$	6'-6"	10	6							
A <sub>18</sub>	1" $\phi$	3'-0"	12	12							

<b>ARKANSAS STATE HIGHWAY COMMISSION</b> LITTLE ROCK, ARK.		Scale: $\frac{1}{2}$ in. = 1 ft.
Drawn By: <u>E.B.S.</u> Date: <u>11-24-61</u> Traced By: <u>W.C.H.</u> Date: <u>11-28-61</u> Checked By: _____ Date: _____	<b>BRIDGE NO. 879-A</b>	
<b>DRAWING NO 6276</b>		

*H. B. Gaver*  
PRINCIPAL HIGHWAY ENGINEER (BRIDGE)



FED. ROAD DIST. NO.	STATE	PROJECT NO.	FISCAL YEAR	SHEET NO.	TOTAL SHEETS
0	ARK.			5	5
STATE JOB NO. 4206					



MARK	SIZE	No. REQ'D	LENGTH	BENDING DIAGRAM
S <sub>1</sub>	5/8"	26	27'-10 1/2"	
S <sub>2</sub>	5/8"	26	29'-0"	
S <sub>3</sub>	5/8"	25	28'-7 1/2"	
S <sub>4</sub>	5/8"	9 of each 20'-0" length to 7'-3 1/2"	Varies	
S <sub>5</sub>	5/8"	16	9'-7"	
S <sub>6</sub>	5/8"	104	5'-5"	
S <sub>7</sub>	5/8"	16	9'-5"	
S <sub>8</sub>	5/8"	16	9'-4"	
S <sub>8A</sub>	5/8"	16	9'-8"	
S <sub>9</sub>	5/8"	94	20'-9"	Straight

### GENERAL NOTES

All concrete shall be Class A. All exposed corners shall be chamfered 3/4" unless otherwise noted.

Design Load = H-15. Design Specifications 1941 A.S.H.O. Allowance has been made for a future wearing surface of 6.25% of roadway surface.

All connections shall be 3" rivets, unless otherwise noted. 3/4" open holes to compensate for dead load deflection the slab shall be thickened 1/2" at 1/2' of span and 1/2" at quarter points of span.

Shop Paint: One coat of red lead and raw linseed oil. Field Paint: First coat, white lead; second coat, white lead tinted with lamp black.

Construction Specifications: Arkansas State Highway Commission Standard Specifications for Road and Bridge Construction, adopted March 1, 1940.

### SPECIAL NOTE:

The 27" WF 106# x 40'-0" and a quantity of 16" x 12" I-Beams of various lengths are available for this job in stock piles at the Highway District Office at Fort Smith, Ark. All other structural metal must be obtained at other sources.

40'-0" I-BEAM SPAN  
30° R.F. SKEW 1° CURVE RT.  
BRIDGE OVER CEDAR CREEK  
SEBASTIAN CO.  
ROUTE 45 SEC. 1

ARKANSAS STATE HIGHWAY COMMISSION  
LITTLE ROCK, ARK.

Drawn By: E.B.S. Date: 11-2-41  
Traced By: W.C.H. Date: 12-3-51  
Checked By: \_\_\_\_\_ Date: \_\_\_\_\_  
BRIDGE NO. 879-A DRAWING NO. 6277

Principal Highway Engineer (Bridge)