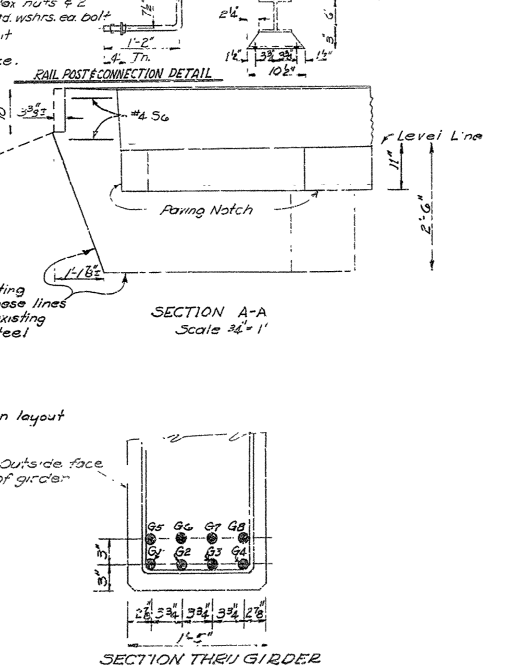
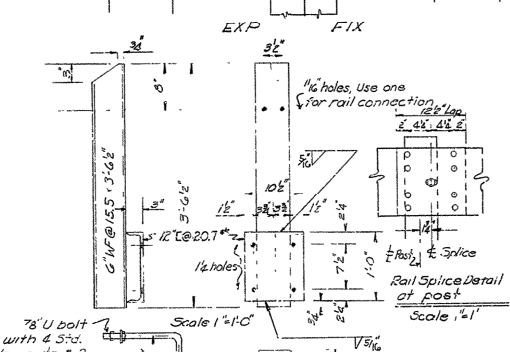
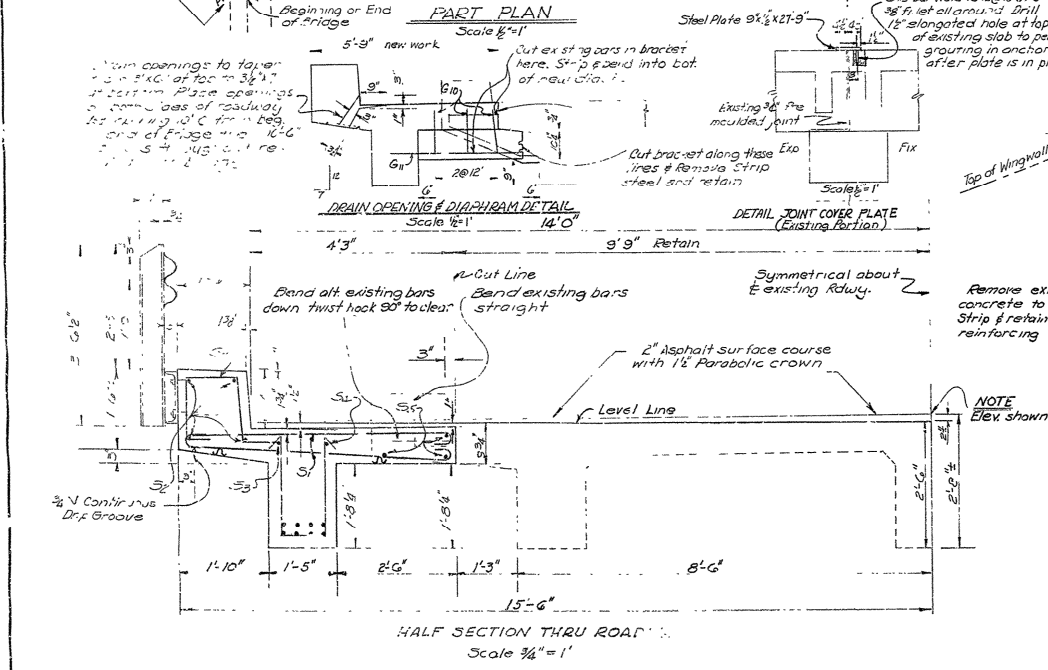
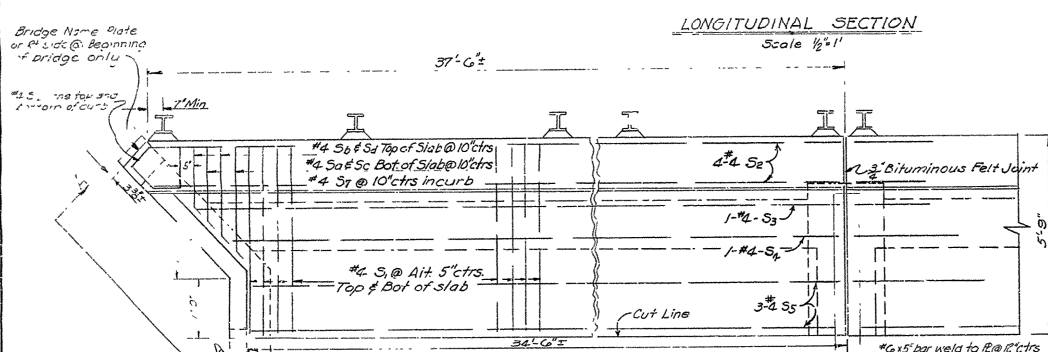
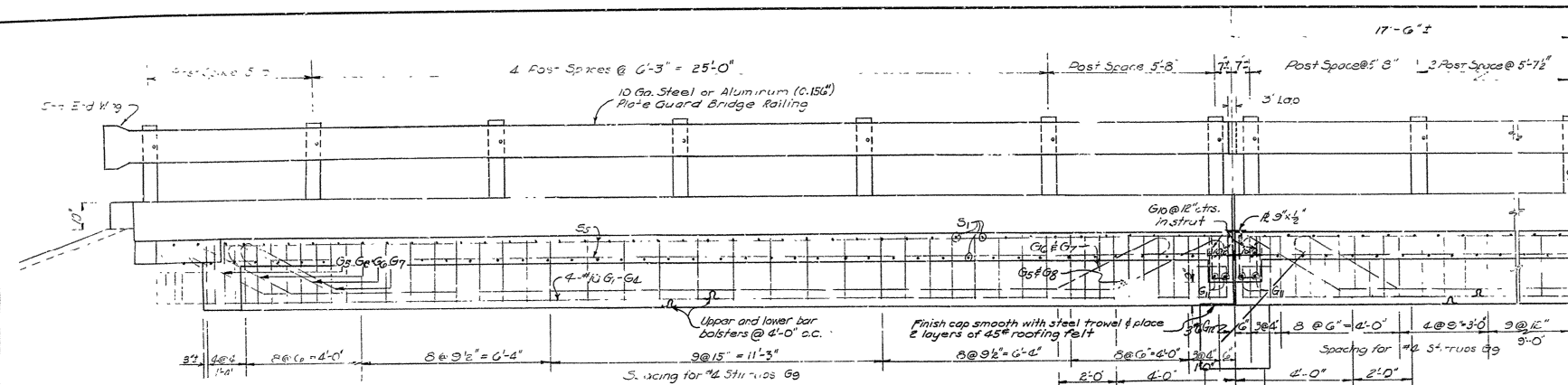




FED. ROAD DIST. NO.	STATE	FED. AID PROJ. NO.	FISCAL YEAR	DIST. NO.	TOTAL SHEETS
6	ARK.	FD-113(3)			
JOB NO.	3399	21	100		



BAR LIST (One Span)

Mark	Size	Number	Length	"A"
G1	#10	2	38-8	36-3
G2	#10	2	38-4	35-11
G3	#10	2	38-0	35-7
G4	#10	2	37-8	35-3
G5	#10	2	38-7	28-6
G6	#10	2	35-0	24-11
G7	#10	2	34-8	24-7
G8	#10	2	37-7	27-6
G9	#4	38	5-10	
S1	#4	168	6-5	5-5
S2	#4	168	3-6 1/2 Ave.	1116 3-2
S3	#4	8	37-2	37-0
S4	#4	2	36-3	37-0
S5	#4	2	35-2	37-0
S6	#4	2	34-0	37-0
S7	#4	28	4-8	
G1-G4	#10	8	36-11	34-6
G5-G8	#10	4	37-1	37-0
G9-G12	#10	4	35-7	28-0
S1-S4	#4	18	34-6	37-0
S5-S8	#4	18	4-8	
G1	#4	12	3-2	
G2	#4	8	4-0	37-0
G3	#4	6	4-0	37-0

Bending Diagram

Dimensions center to center of bars

GENERAL NOTES

All concrete to be Class S. All exposed corners to have 3/4" chamfer unless otherwise noted.

Removal of portions of the existing structure as shown by the details shall be performed and paid for according to Special Provisions.

The 3/4" bituminous felt joint shall be measured and paid for as Class S concrete.

The roadway joint cover plates shall be measured and paid for as Structural Steel in Beam Spans.

Reinforcing Steel to be deformed on's of intermediate or hard grade.

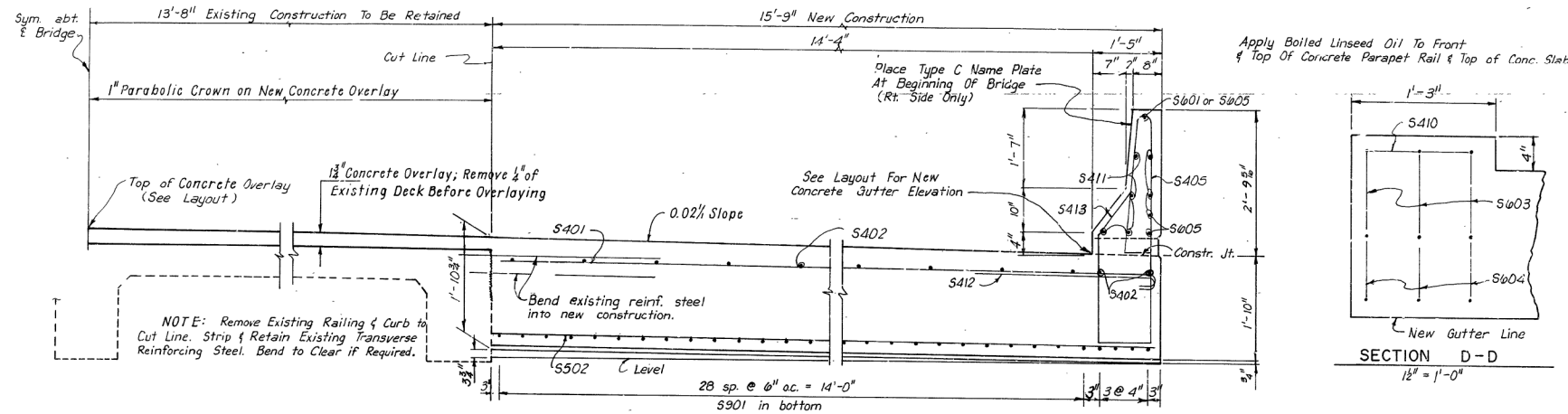
For additional General Notes see Drawing 5362.

DETAILS OF WIDENING SUPERSTRUCTURE  
BRIDGES OVER DYE & ROCK CREEK  
WESTFORK-GREENLAND RECONSTRUCTION  
WASHINGTON COUNTY  
ROUTE 71 SEC. 16  
ARKANSAS STATE HIGHWAY COMMISSION  
LITTLE ROCK, ARK.

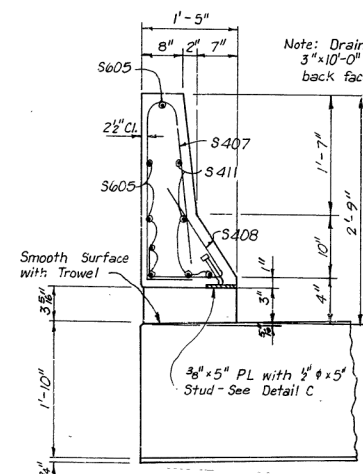
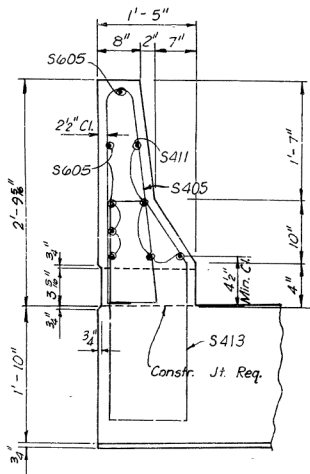
DRAWN BY: DCS DATE: 5-18-61  
CHECKED BY: JEM DATE: 5-17-61  
BRIDGE NO. 1424-A# 1425A DRAWING NO. 11475

DATE REVISION	DATE REVISION	DATE REVISION	DATE REVISION	FED. ROAD DIST. NO.	STATE	FED. AID PROJ. NO.	SHEET NO.	TOTAL SHEETS
				6	ARK.			
						JOB NO. 4878	18	52
						1425W, 1424W SPANS		24033

186



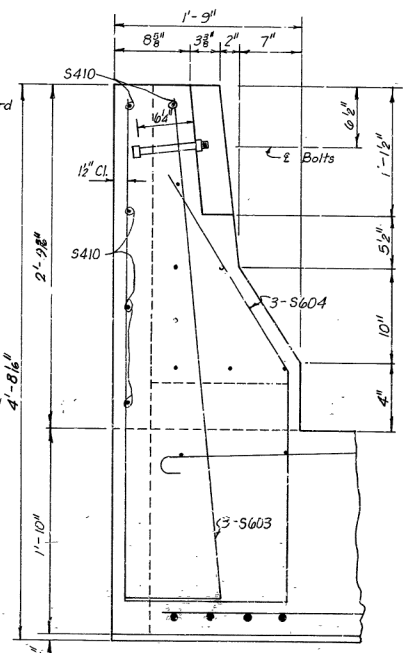
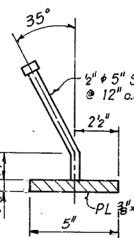
HALF-SECTION THRU ROADWAY AT END SPAN



NOTE: The surfaces of the 3/8" Plates which will not be in contact with Concrete shall receive two coats of paint in the Shop. These coats shall be those specified as First Shop Coat and Second Field Coat in Subsection 807.59 (a) and 807.59 (c).

The 1/2" x 5" Studs shall be granular Flux Filled, Solid Fluxed, or equal, and automatically end welded to the 3/8" Plate in accordance with recommendations of the Manufacturer. Studs and plate to be measured and paid for as Class S(AE) Concrete.

See dwg. GR-8A For Guard Rail Connection Detail



BAR LIST (END SPAN)				Bending Diagrams (Dimensions are out to out of bars.)	
Mark	No. Req'd.	Length	Pin Dia.		
S901	66	36'-7"	5tr.		
S601	2	11'-0"	5tr.		
S603	6	3'-7"	3 3/4"		
S604	6	4'-10"	3 3/4"		
S605	28	11'-11"	5tr.		
S502	74	15'-5"	5tr.		
S401	50	15'-11"	3"		
S402	24	36'-7"	5tr.		
S405	54	6'-10"	2"		
S407	54	6'-4"	2"		
S408	54	3'-2"	2"		
S410	10	0'-11"	5tr.		
S411	24	11'-11"	5tr.		
S412	44	6'-6"	3"		
S413	54	8'-1"	2"		

GENERAL NOTES

ALL CONCRETE TO BE CLASS S(AE) AS SHOWN ON THE LAYOUT. ALL EXPOSED CORNERS TO BE CHAMFERED 3/4" UNLESS OTHERWISE NOTED.

REINFORCING STEEL TO BE ASTM A615, OR A617, GRADE 60.

BAR SUPPORTS FOR REINFORCING BARS WILL NOT BE PAID FOR DIRECTLY, BUT WILL BE CONSIDERED SUBSIDIARY TO THE ITEM "REINFORCING STEEL."

ROOFING FELT, BITUMINOUS FELT, AND POURED SYNTHETIC POLYMER JOINTS SHALL BE MEASURED AND PAID FOR AS CLASS S(AE) CONCRETE.

SPECIFICATIONS: ARKANSAS STATE HIGHWAY COMMISSION STANDARD SPECIFICATIONS FOR HIGHWAY CONSTRUCTION, EDITION OF 1978 AND APPLICABLE SPECIAL PROVISIONS.

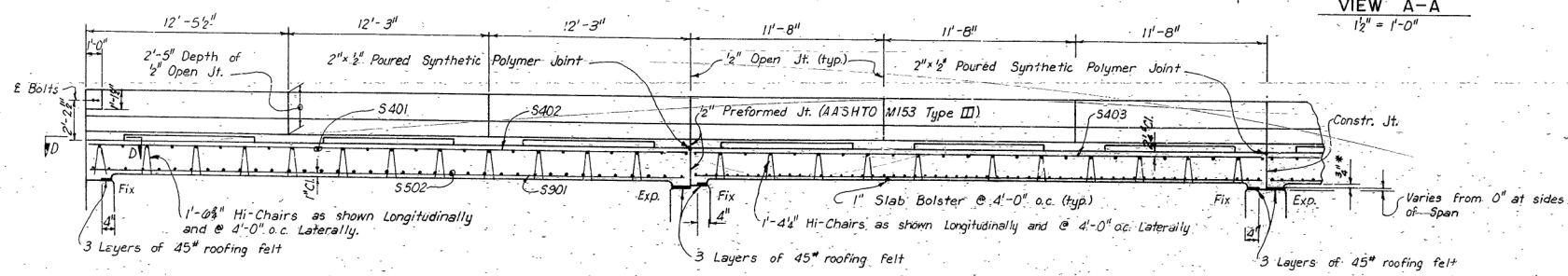
DESIGN SPECIFICATIONS: AASHTO 1977 EDITION WITH INTERIM SPECIFICATIONS.

DESIGN LIVE LOADING: HS20

LOAD DISTRIBUTION TO SLAB: DEAD LOAD 306 PSF, LIVE LOAD - .182 WHEELS/FT. OF WIDTH PLUS 30% IMPACT.

UNIT STRESSES: COMPRESSIVE STRENGTH OF CLASS S10R S(AE) CONCRETE = 3500 PSI  
YIELD STRENGTH OF REINFORCEMENT = 60,000 PSI

LOAD FACTOR USED FOR DESIGN OF SLAB.



SHEET 2 OF 3

DETAILS - WIDENING OF SPANS FOR ROCK CREEK & DYE CREEK WESTFORK - GREENLAND WASHINGTON COUNTY - ROUTE SEC.

ARKANSAS STATE HIGHWAY COMMISSION

LITTLE ROCK, ARK.

3-3-80

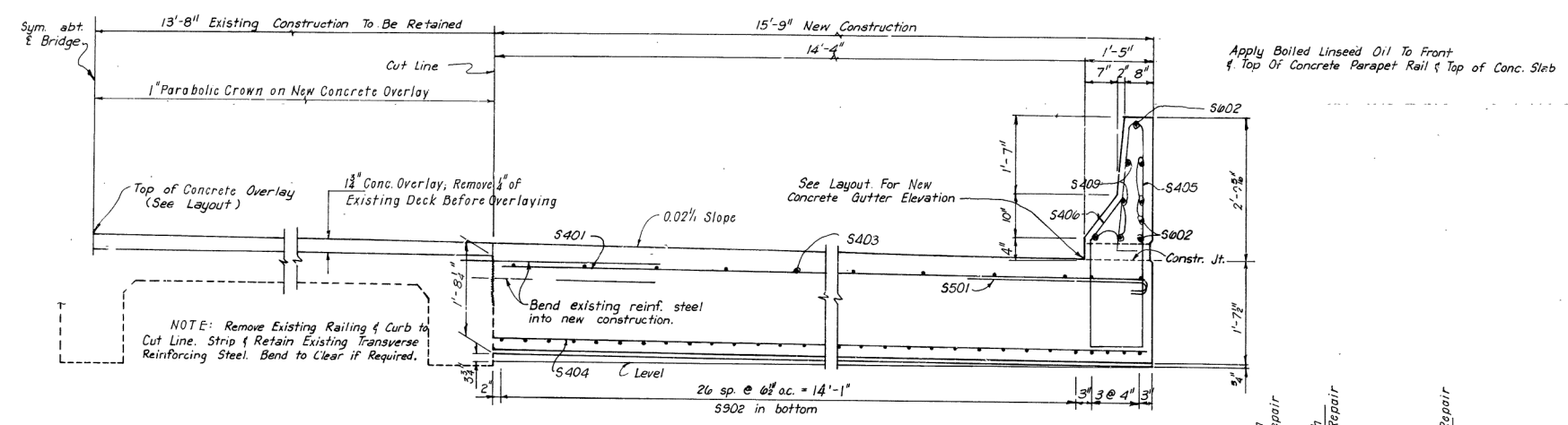
DATE: 4-2-80

SCALE: As Noted

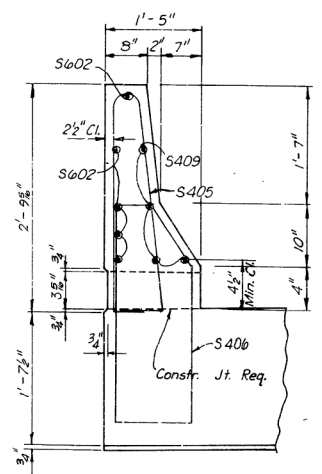
BRIDGE NO. 1425W, 1424W DRAWING NO. 24033

\*Dimensions are at 1" Joint. Adjustment shall be made due to grade.

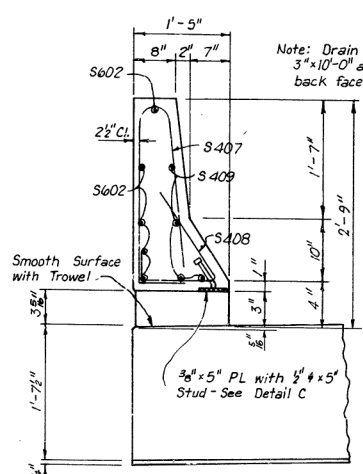
ROUTE	STATE	FED. AID PROJ. NO.	SHEET NO.	TOTAL SHEETS
6	ARK.		19	52
JOB NO. 4878				
1425W, 1424W SPANS 24034				



HALF-SECTION THRU ROADWAY AT INT. SPAN  
3/4" = 1'-0"

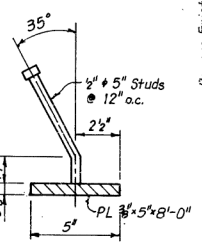


SECTION B-B  
1" = 1'-0"

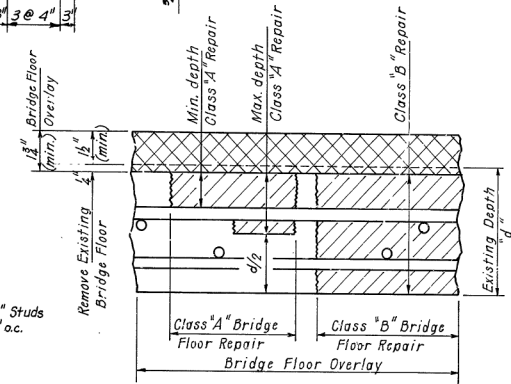


SECTION C-C  
1" = 1'-0"

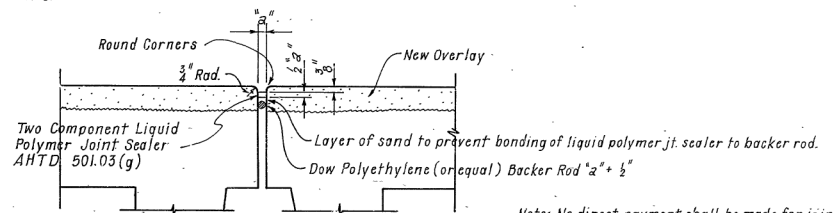
NOTE: The surfaces of the 3/8" Plates which will not be in contact with Concrete shall receive two coats of paint in the Shop. These coats shall be those specified as First Shop Coat and Second Field Coat in Subsection 807.59 (a) and 807.59 (c). The 1/2" x 5" Stud shall be Granular Flux Filled, Solid Fluxed, or equal, and automatically end welded to the 3/8" Plate in accordance with recommendations of the Manufacturer. Studs and plate to be measured and paid for as Class S(AE) Concrete.



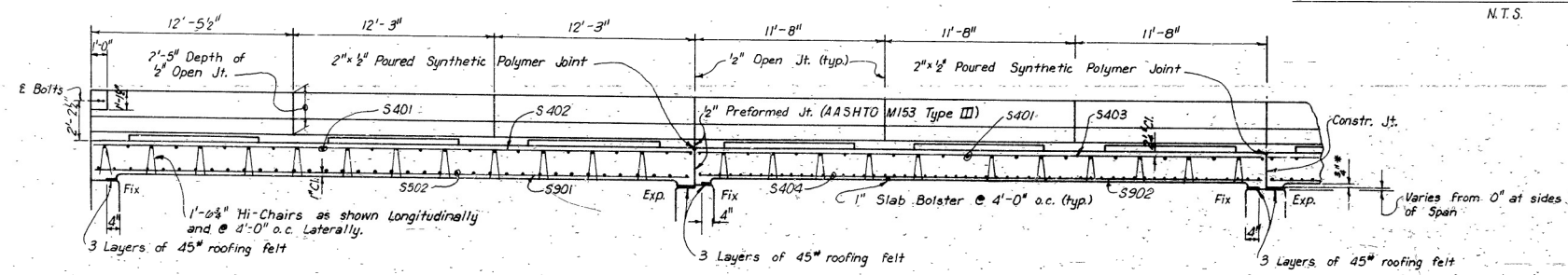
DETAIL C  
N.T.S.



LIMITS OF WORK FOR BRIDGE FLOOR OVERLAY AND REPAIR  
N.T.S.



DETAILS OF REMODELED EXISTING JOINT (TYP)  
N.T.S.



LONGITUDINAL SECTION AT CUT LINE  
3/4" = 1'-0"

BAR LIST (INT. SPAN)				Bending Diagrams (Dimensions are out to out of bars.)	
Mark	No. Req'd.	Length	Pin Dia.		
S902	62	34'-8"	5tr.		
S602	30	11'-3"	5tr.		
S501	60	6'-7"	3 3/4"		
S401	48	15'-11"	3"		
S403	20	34'-8"	5tr.		
S404	112	15'-5"	5tr.		
S405	60	6'-10"	2"		
S406	40	7'-7"	2"		
S407	54	6'-4"	2"		
S408	54	3'-2"	2"		
S409	24	17'-4"	5tr.		

Note: Areas of bridge floor repair are not shown on the drawings. Specific areas requiring Class A or Class B bridge floor repair to be designated by the Engineer during the repair and overlay of the bridge floor. Quantities of Bridge Floor Repair are shown for estimating purposes only.

SHEET 3 OF 3  
DETAILS WIDENING OF SPANS  
FOR ROCK CREEK & DYE CREEK  
WESTFORK - GREENLAND  
WASHINGTON COUNTY  
ROUTE SEC.  
ARKANSAS STATE HIGHWAY COMMISSION  
LITTLE ROCK, ARK.  
E.R.W. 3-3-80  
CHECKED BY: CVA DATE: 4-2-80  
DESIGNED BY: CVA DATE: 3-3-80  
BRIDGE NO. 1425W, 1424W DRAWING NO. 24034