

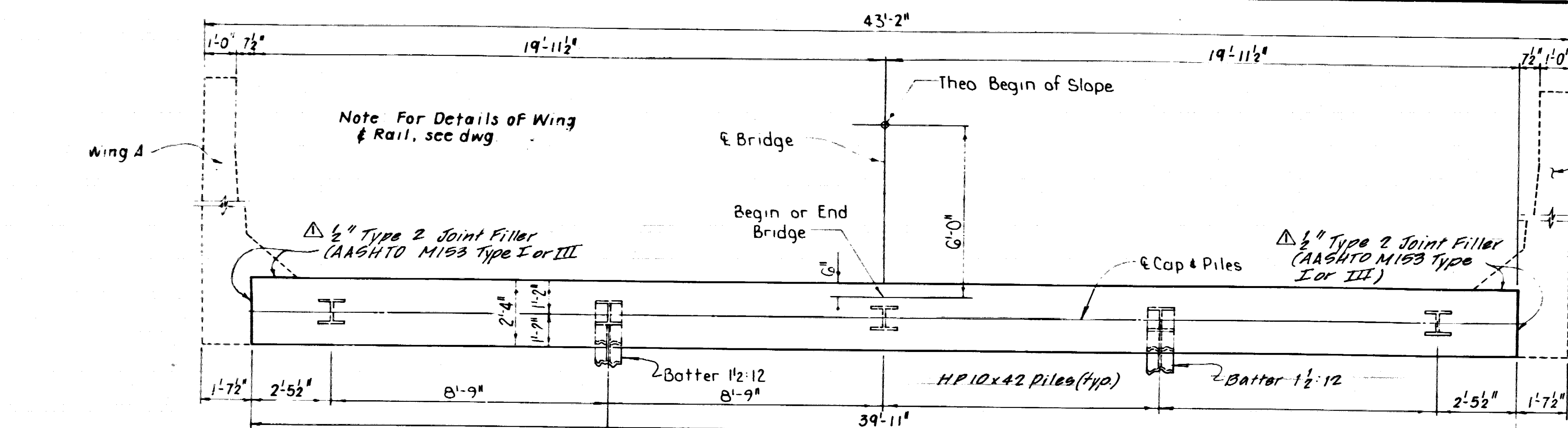
DATE REVISION	DATE FILMED	DATE REVISION	DATE FILMED	FED. ROAD DIST. NO.	STATE	FED. AID PROJ. NO.	SHEET NO.	TOTAL SHEETS
				6	ARK.			
				JOB NO.	3779	22	82	

ALT. NO. 1
 LAYOUT OF BRIDGE OVER
 NUMBER ONE BAYOU
 PIKE CO. LINE-HWY. 29 BRS. & APPRS.
 NEVADA COUNTY
 ROUTE 19 SEC. 5
 ARKANSAS STATE HIGHWAY COMMISSION
 LITTLE ROCK, ARK.

DRAWN BY: *EPK* DATE: 4-30-87
 CHECKED BY: *DLB* DATE: 5-15-88
 DESIGNED BY: *GVA* DATE: 4-20-87

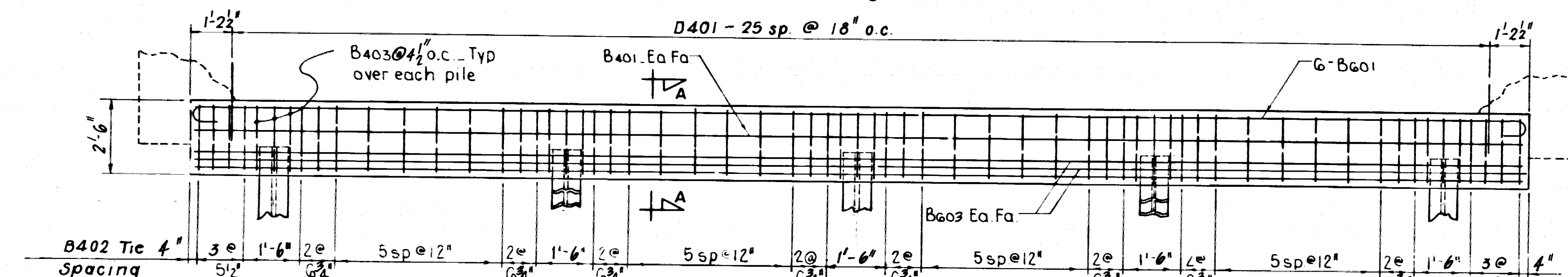
BRIDGE NO. 6345 DRAWING NO. 30718

10-17-89



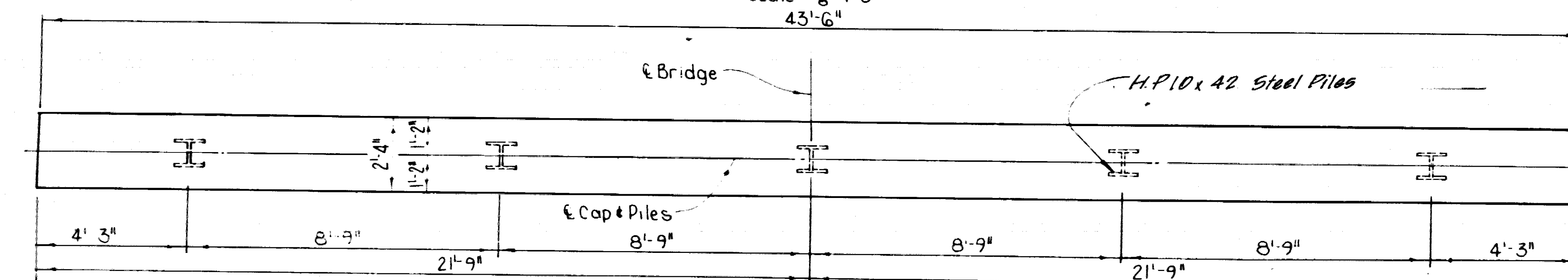
PLAN - END BENT

Scale: 3/8" = 1'-0"



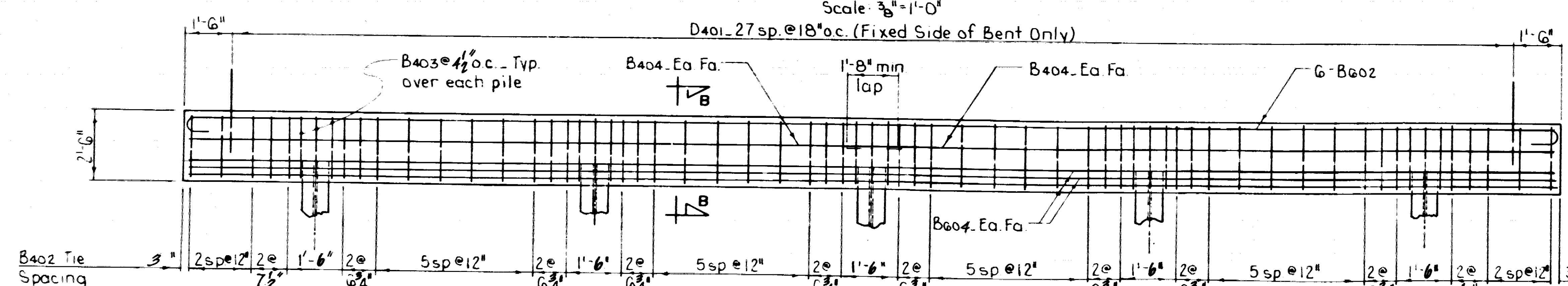
ELEVATION - END BENT

Scale: 3/8" = 1'-0"



PLAN - INT. BENT

Scale: 3/8" = 1'-0"



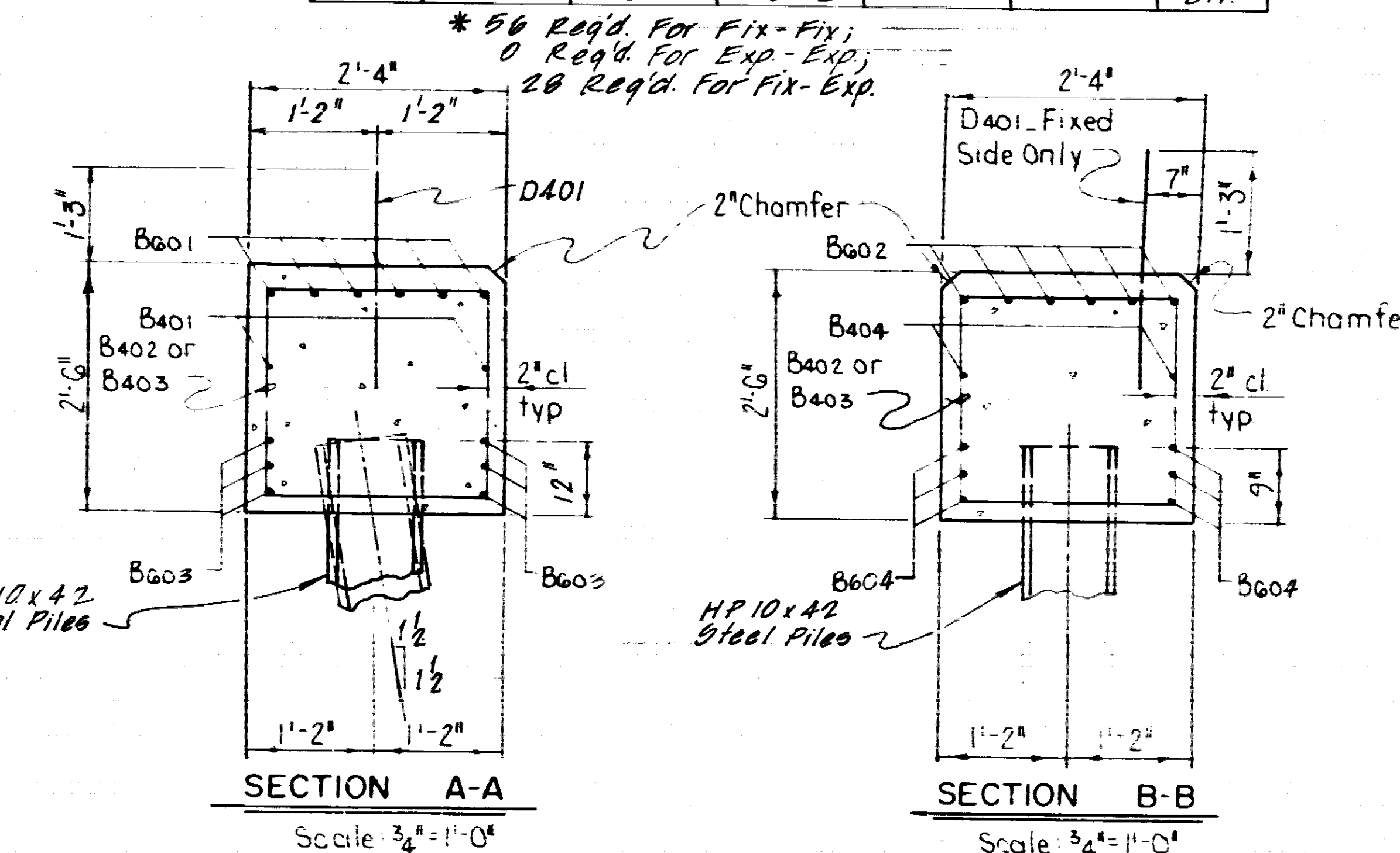
ELEVATION - INT. BENT

Scale: 3/8" = 1'-0"

BENT QUANTITIES			
BENT	CLASS 50 CONCRETE	REINFORCING STEEL	
END	8.60 CU. YD.	EXP. FIX	1160 LB.
INTERIOR	9.40 CU. YD.	EXP. EXP.	1201 LB.
		FIX. FIX	1296 LB.

DATE REVISED	DATE	DATE REVISED	DATE	FED. ROAD DIST. NO.	STATE	FED. AID PROJ. NO.	SHEET NO.	TOTAL SHEETS
3-12-90	3-14-90			6	ARK.		25	82
JOB NO. 3479								

BAR LIST - PER BENT							BENDING DIAGRAMS	
MARK	NUMBER REQUIRED	END BT.	INT. BT.	LENGTH	A	B	P.D.	
B401	2			39'-7"			Str.	
B402	40	50		8'-8"	2'-0"	2'-2"	2"	
B403	15	15		6'-2"	2'-0"	2'-2"	2"	
B404		4		22'-5"			Str.	
D401	26	*		2'-6"			Str.	
B601	6			40'-11"	39'-7"	0"	4 1/2"	
B602	6			44'-6"	43'-2"	0"	4 1/2"	
B603	6			39'-7"			Str.	
B604	6			43'-2"			Str.	



SECTION A-A

Scale: 3/8" = 1'-0"

SECTION B-B

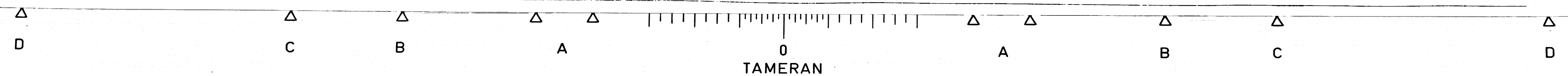
Scale: 3/4" = 1'-0"

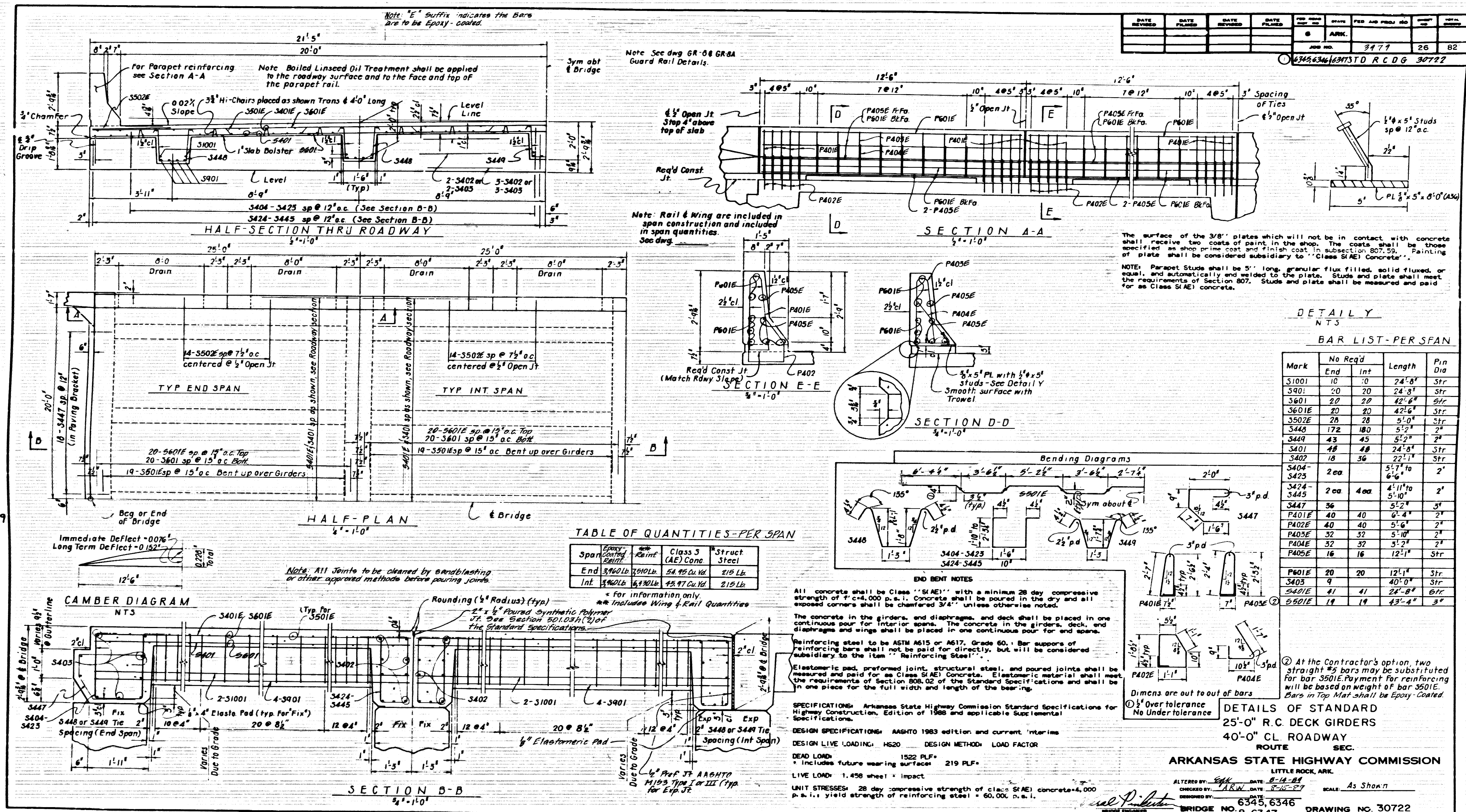
GENERAL NOTES
CONCRETE: ALL CONCRETE SHALL BE CLASS "S" WITH A MINIMUM 28 DAY COMPRESSIVE STRENGTH f'c = 3500 PSI. ALL CONCRETE SHALL BE POURED IN THE DRY. ALL EXPOSED CORNERS TO BE CHAMFERED 3/4" UNLESS OTHERWISE NOTED.
REINFORCING STEEL: REINFORCING STEEL SHALL CONFORM TO ASTM A615 OR A617, GRADE 60, (YIELD STRENGTH = 60,000 PSI).
ALL PILING SHALL BE DRIVEN TO A MINIMUM BEARING CAPACITY OF 55 TONS PER PILE. PILING SHALL BE HP 10X42 STEEL PILES.
SPECIFICATIONS: ARKANSAS STATE HIGHWAY COMMISSION STANDARD SPECIFICATIONS FOR HIGHWAY CONSTRUCTION, EDITION OF 1988 AND APPLICABLE SPECIAL PROVISIONS.
LIVE LOAD: HS20
DESIGN SPECIFICATIONS: AASHTO STANDARD SPECIFICATIONS FOR HIGHWAY BRIDGES, 1983 WITH CURRENT INTERIMS.
METHOD OF DESIGN: LOAD FACTOR

DETAILS OF STD. PILE BENTS
FOR 25'-0" R.C.D.G. SPANS
40'-0" CL. RDWY. - 16" CONC. PILES

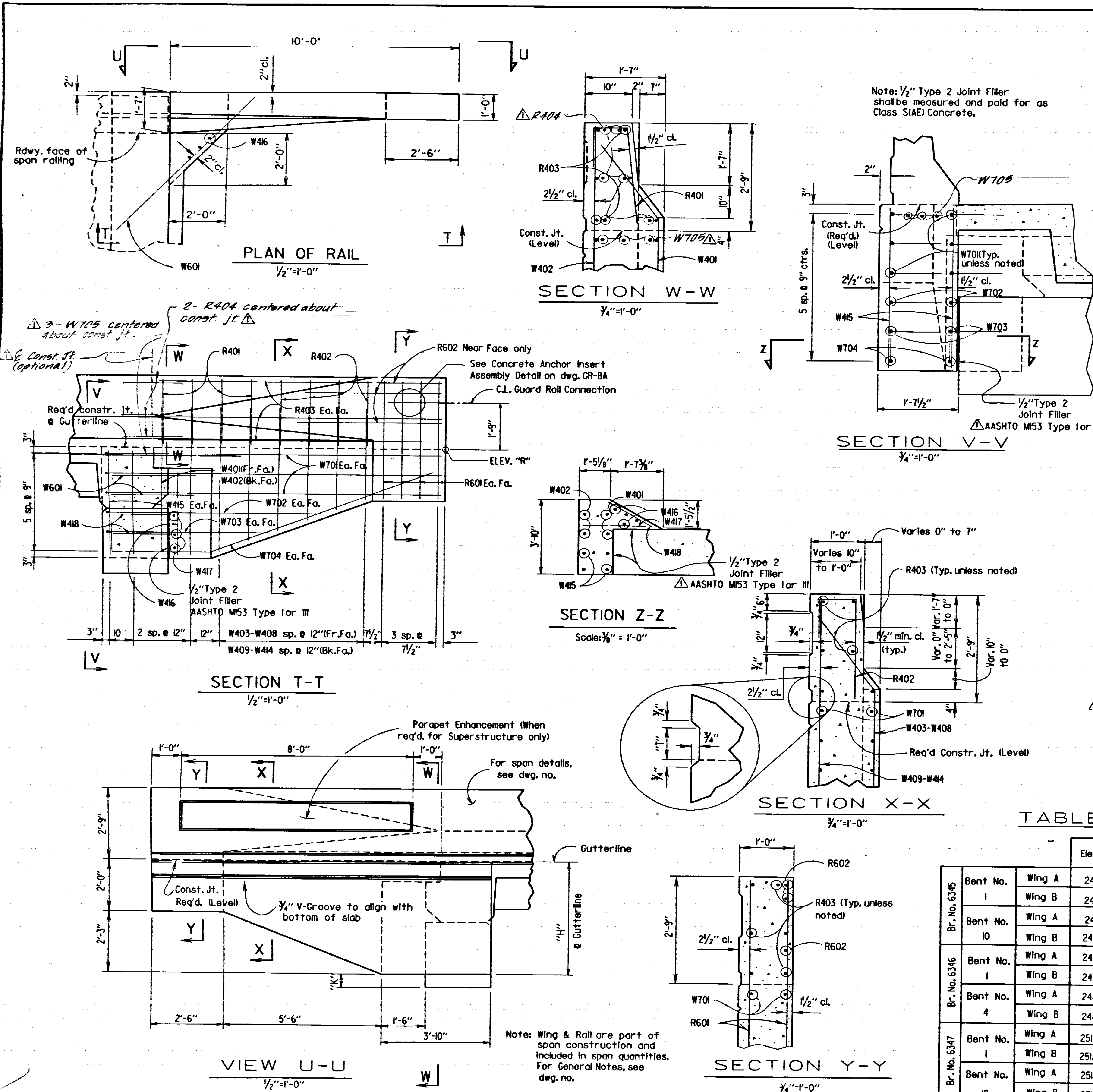
ROUTE SEC.
ARKANSAS STATE HIGHWAY COMMISSION
LITTLE ROCK, ARK.

ALTERED BY: *[Signature]* DATE: 8-3-89
CHECKED BY: *[Signature]* DATE: 8-3-89
DESIGNED BY: *[Signature]* DATE: 8-3-89
BRIDGE NO. 6345, 6346, 6347 DRAWING NO. 30721



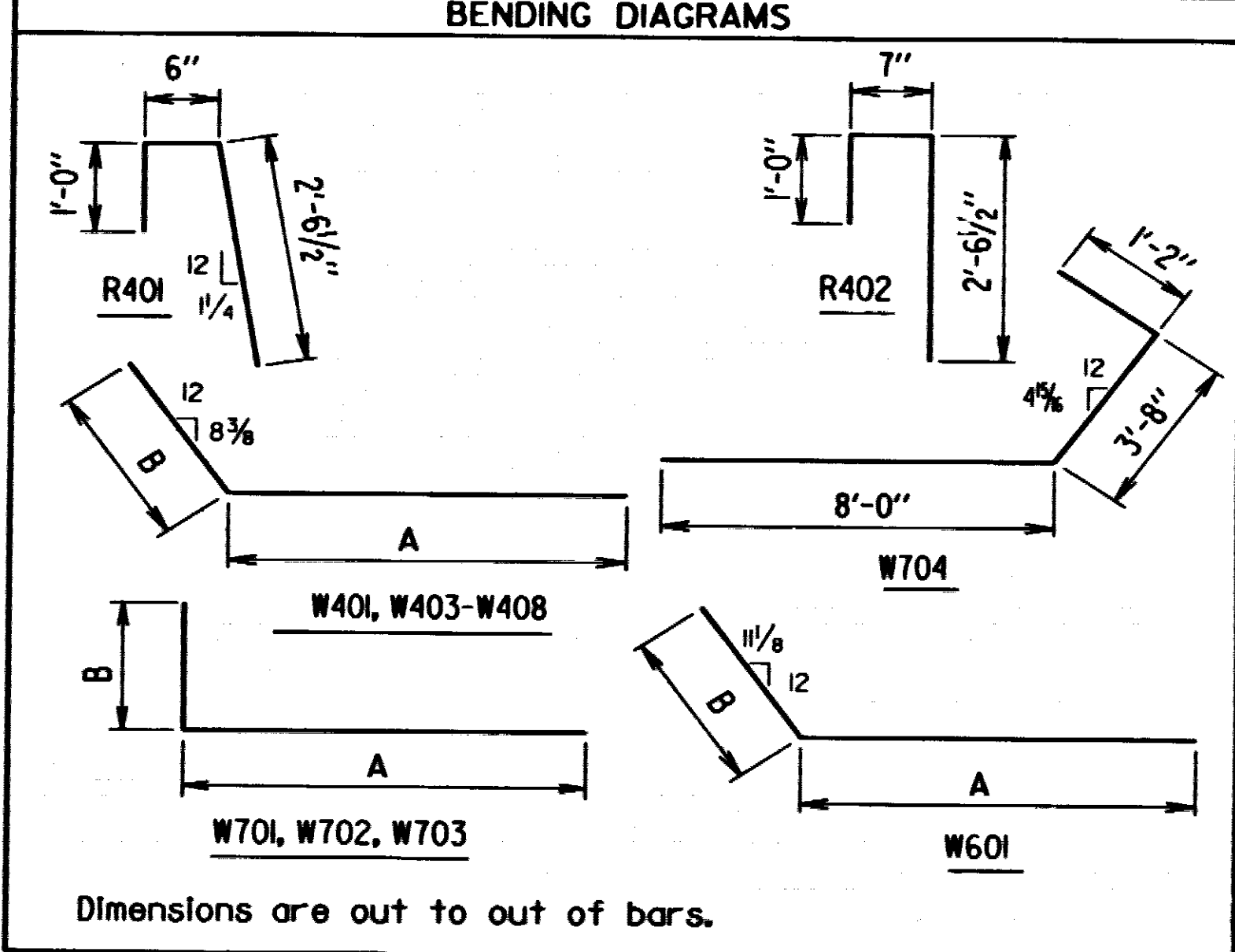


TAMERAN



BAR LIST (WING & RAIL)

MARK	NO.	REQ'D.	LENGTH	A	B	PIN DIA.
R401	8		3'-11"			2"
R402	8		4'-0"			2"
R403	12		9'-8"			Str.
R601	16		4'-5"			Str.
R602	6		5'-0"			Str.
R404	12		4'-0"			Str.
W401	4		5'-6"	4'-4"	1'-2"	2"
W402	4		6'-8"			Str.
W403-W408	each		Var. 3'-4" to 5'-5"	Var. 2'-2" to 4'-3"	1'-2"	2"
W409-W414	2 of each		Var. 4'-6" to 6'-7"			Str.
W415	8		3'-11"			Str.
W416	8		3'-11"			Str.
W417	6		2'-7"			Str.
W418	4		1'-10"			Str.
W601	4		7'-5"	6'-7"	1'-0"	4 1/2"
W701	12		12'-6"	11'-6"	1'-2"	5 1/4"
W702	4		8'-6"	7'-6"	1'-2"	5 1/4"
W703	4		6'-8"	5'-8"	1'-2"	5 1/4"
W704	4		12'-6"			5 1/4"
W705	6		6'-0"			5 1/4"



DATE REVISED	DATE FILMED	DATE REVISED	DATE FILMED	FED. ROAD DIST. NO.	STATE	FED. AID PROJ. NO.	SHEET NO.	TOTAL SHEETS
3-12-72	3-14-50			6	ARK.			
				JOB NO.	3979	27	82	

6345, 6346, 6347 STD. WING 30723

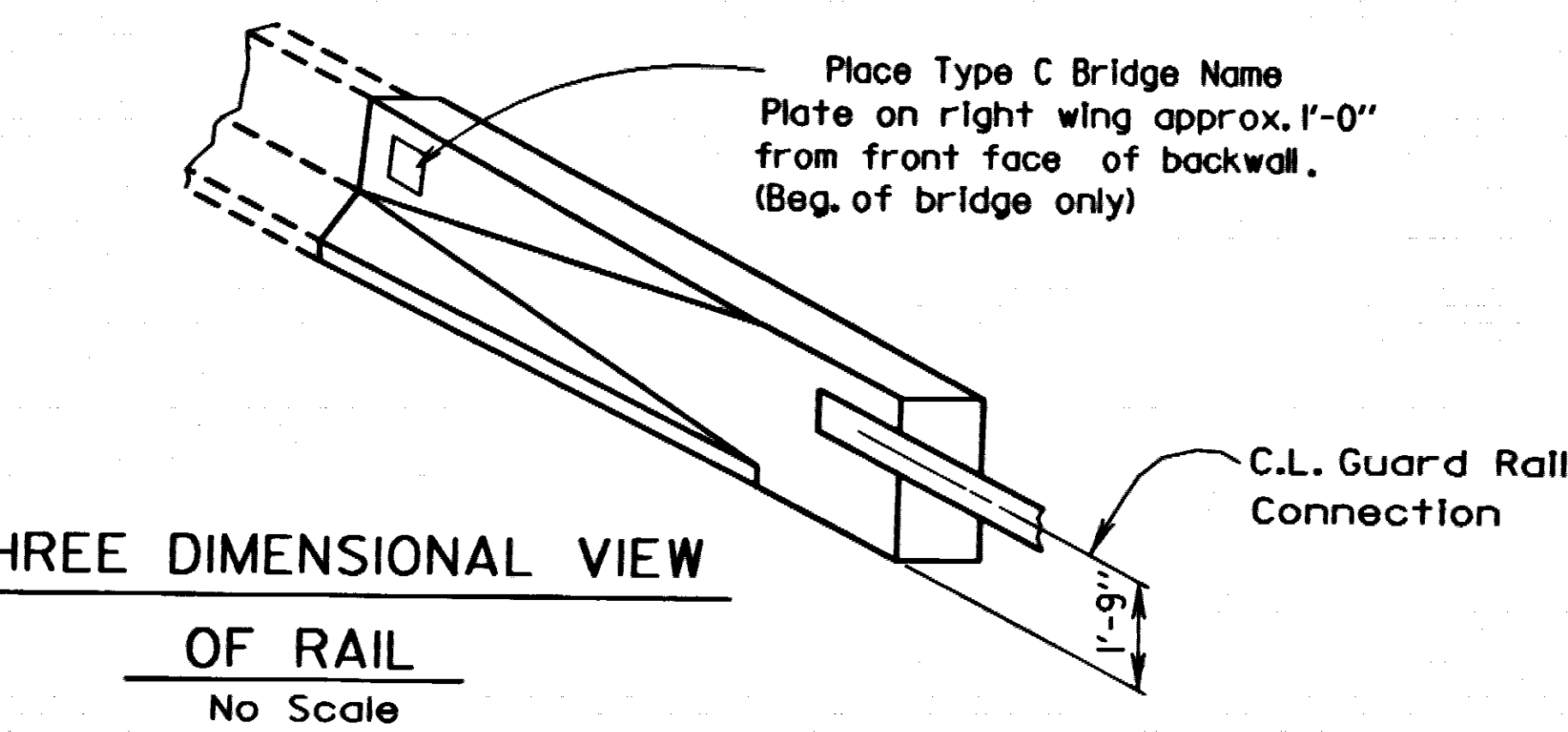


TABLE OF VARIABLES

			Elev. "R"	"H"	"K"	"T"
Bent No. 1	Wing A	248.22	4'-3"	7 3/8"	3 3/4"	
	Wing B	248.22	4'-3"	7 3/8"	3 3/4"	
Bent No. 10	Wing A	248.22	4'-3"	7 3/8"	3 3/4"	
	Wing B	248.22	4'-3"	7 3/8"	3 3/4"	
Bent No. 1	Wing A	248.22	4'-3"	7 3/8"	3 3/4"	
	Wing B	248.22	4'-3"	7 3/8"	3 3/4"	
Bent No. 4	Wing A	248.22	4'-3"	7 3/8"	3 3/4"	
	Wing B	248.22	4'-3"	7 3/8"	3 3/4"	
Bent No. 1	Wing A	251.72	4'-3"	7 3/8"	3 3/4"	
	Wing B	251.72	4'-3"	7 3/8"	3 3/4"	
Bent No. 18	Wing A	251.72	4'-3"	7 3/8"	3 3/4"	
	Wing B	251.72	4'-3"	7 3/8"	3 3/4"	

Notes: Concrete Insert Anchor Assembly will not be paid for directly, but will be considered subsidiary to the item of Class S(AE) Concrete.

Notes: For details of guard rail connections, see Drwg. No. GR-8 & GR-8A.

Tabular Data By: *EJK* Date: 6-15-69
Checked By: *ARW* Date: 8-16-69

**ALT. NO. 1
STANDARD DETAILS
FOR WING AND RAIL**

ROUTE SEC.
ARKANSAS STATE HIGHWAY COMMISSION
LITTLE ROCK, ARK.

W. J. P. ...
BRIDGE ENGINEER

ALTERED BY: *EJK* DATE: 6-15-69
CHECKED BY: *STD.* DATE: *As Shown*
DESIGNED BY: *STD.* DATE: *As Shown*
BRIDGE NO. 6345, 6346, 6347 DRAWING NO. 30723

