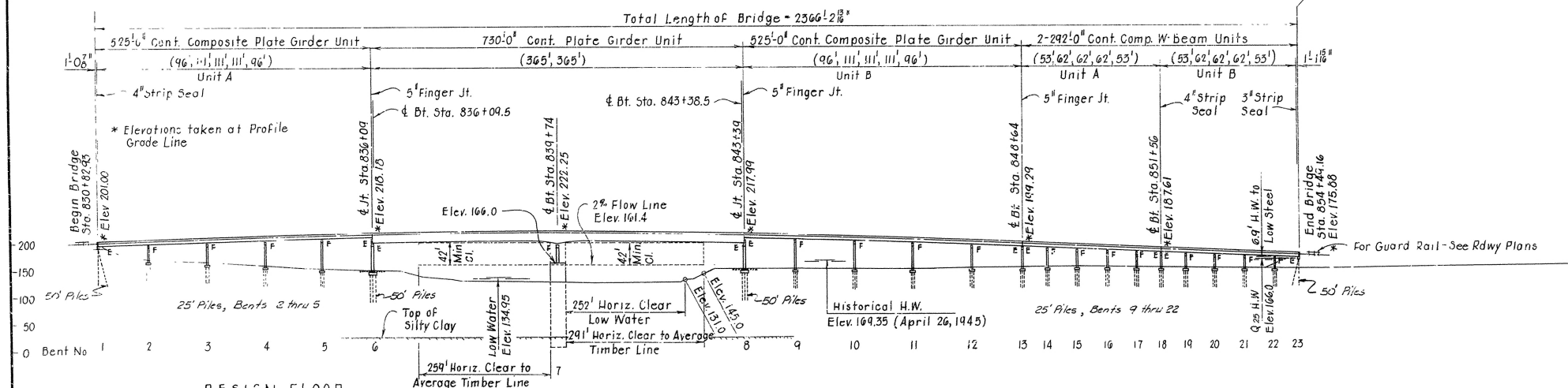
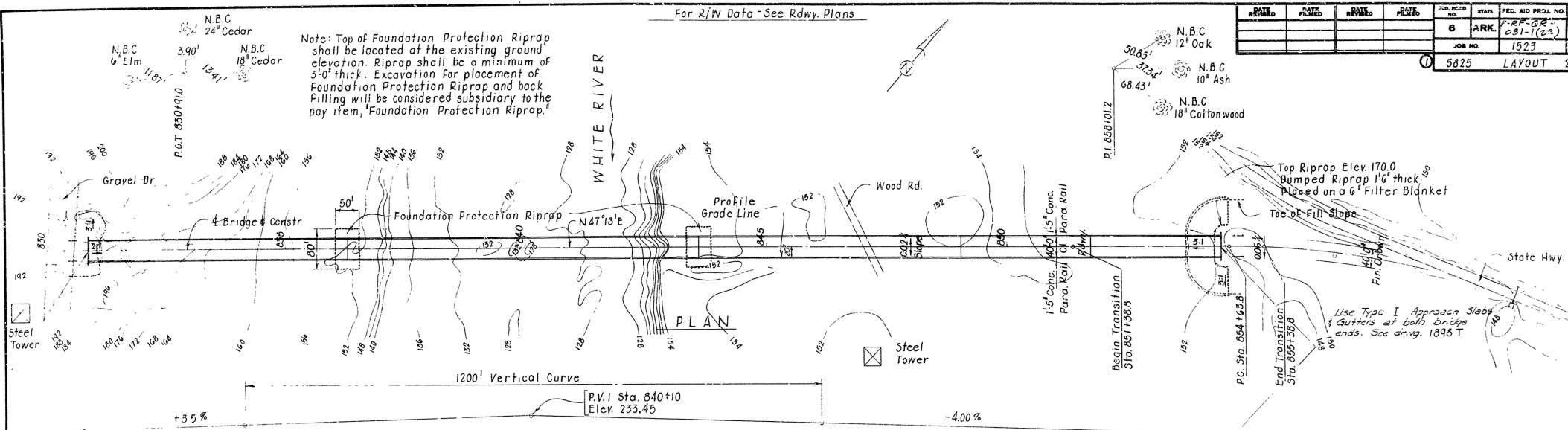


For R/W Data - See Rdwy. Plans

DATE	DATE	DATE	DATE	FOR. PROJ. NO.	STATE	FED. AID PROJ. NO.
				6	ARK.	031-1(22)
				JOB NO.		1523
				5825	LAYOUT	2

Note: Top of Foundation Protection Riprap shall be located at the existing ground elevation. Riprap shall be a minimum of 3'-0" thick. Excavation for placement of Foundation Protection Riprap and back filling will be considered subsidiary to the pay item, "Foundation Protection Riprap."



DESIGN FLOOD
 ** Q₂₅ = 243,000 cfs
 Q₂₅ thru Bridge = 146,000 cfs
 Normal W.S. Elev. 166.0
 W.S. with Backwater = Elev. 166.5

ELEVATION
 ** D.A. = 25,732 Sq. Mi.

BASIC FLOOD
 Q₁₀₀ = N.A.
 Normal W.S. Elev. N.A.
 W.S. with Backwater = Elev. N.A.

GENERAL NOTES:

- BENCH MARK: "N.1.S." 8" WATER OAK 1" RT. STA. 832+20, ELEV. 166.80.
- ALL CONCRETE SHALL BE POURED IN THE DRY.
- PILING FOR BENT NO. 1 THRU 5 AND 9 THRU 23 SHALL BE 16" OCTAGONAL OR 14" PRECAST CONCRETE DRIVEN WITH AN APPROVED AIR, STEAM, OR DIESEL HAMMER TO A MINIMUM BEARING CAPACITY OF 44 TONS AND TO A MINIMUM PENETRATION OF 20" BELOW NATURAL GROUND ON END BENTS AND 20" BELOW BOTTOM OF FOOTING ON INT. BENTS.
- PILING FOR BENTS NO. 6 AND 8 SHALL BE HP12X53 STEEL PILES DRIVEN WITH AN APPROVED AIR, STEAM, OR DIESEL HAMMER TO A MINIMUM BEARING CAPACITY OF 55 TONS AND TO A MINIMUM PENETRATION OF 30" BELOW THE BOTTOM OF FOOTING.
- IN BENT NO. 8 & 8 DRIVE ONE 59" TEST PILE WITHOUT A FOLLOWER.
- LENGTHS OF PILING SHOWN ARE ASSUMED FOR ESTIMATING QUANTITIES ONLY. ACTUAL LENGTHS TO BE DETERMINED IN THE FIELD. DRIVE ONE 30" TEST PILE IN BENTS 2, 4, 10, 13, 17 AND 21.
- PILES IN END BENTS TO BE DRIVEN AFTER EMBANKMENT TO BOTTOM OF CAP IS IN PLACE.
- PILE SHAPES SHALL NOT BE MIXED ON ANY BRIDGE.

FOR DETAILS OF END BENT 1, SEE DWG. NO. 22846
 FOR DETAILS OF END BENT 23, SEE DWG. NO. 22852
 FOR DETAILS OF INTERMEDIATE BENTS 2 THRU 6 & 8 THRU 22, SEE DWG. NO. 22847, 22848, 22854-22858
 FOR DETAILS OF INTERMEDIATE BENT 7, SEE DWG. NO. 22849-22853
 FOR DETAILS OF 525'-0" CONTINUOUS UNIT, SEE DWG. NO. 22860-22864 & 22866.
 FOR DETAILS OF 730'-0" CONTINUOUS UNIT, SEE DWG. NO. 22873-22882
 FOR DETAILS OF 292'-0" CONTINUOUS UNIT, SEE DWG. NO. 22866-22872
 FOR DETAILS OF PRECAST CONCRETE PILING, SEE DWG. NO. 2383

SPECIFICATIONS: ARKANSAS STATE HIGHWAY COMMISSION STANDARD SPECIFICATIONS FOR HIGHWAY CONSTRUCTION, EDITION OF 1978, AND APPLICABLE SPECIAL PROVISIONS.
 DESIGN SPECIFICATIONS: AASHTO STANDARD SPECIFICATIONS FOR HIGHWAY BRIDGES, 1977 EDITION, AND 1978 INTERIM SPECIFICATIONS.

LIVE LOADING: HS20
 METHOD OF DESIGN: LOAD FACTOR

DREDGED CAISSON SHALL BE FOUNDED A MINIMUM OF 15' INTO SILTY CLAY AND CONSTRUCTED ACCORDING TO THE PLANS AND SPECIAL PROVISIONS INCLUDED IN THIS JOB.

TOPS OF FOUNDATION PILING FOOTINGS SHALL BE A MINIMUM OF 1'-6" BELOW NATURAL GROUND LINE.

LAYOUT OF BRIDGE OVER

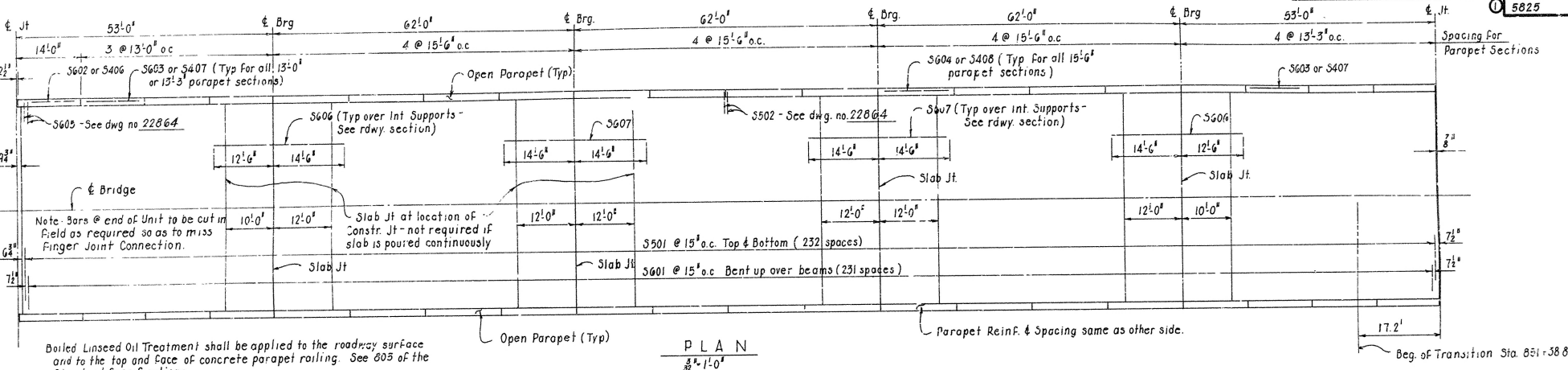
WHITE RIVER
 BRIDGE NO. 5825

ROUTE 1 SEC. 5 & 6
 ARKANSAS STATE HIGHWAY COMMISSION

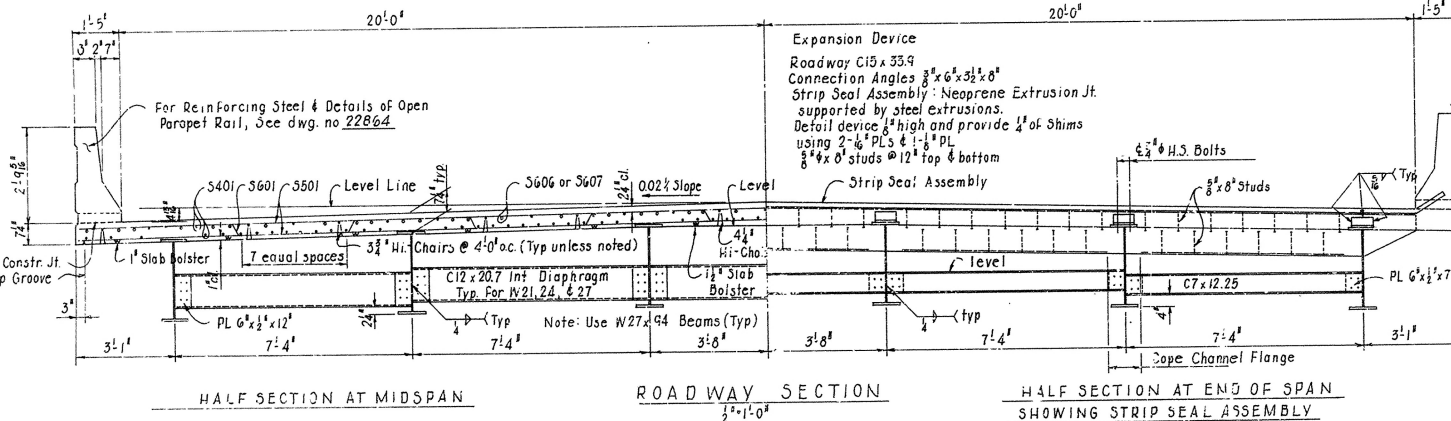
LITTLE ROCK, ARK.
 DRAWN BY: L.M. DATE: 9-6-78
 CHECKED BY: M.P.C. DATE: 2-28-79
 DESIGNED BY: D.P.L. DATE: 9-6-78
 BRIDGE NO. 5825 DRAWING NO. 1-100'

NOTE: The Concrete Bridge Deck shall be given a Time Finish as specified for Final Finishing in subsection 802.23 for Class G, Roadway Surface Finish.

DATE	REV.	DATE	REV.	FED. ROAD NO.	STATE	FED. AID PROJ. NO.	SHEET NO.	TOTAL SHEETS
1-22-82	5825-126-32			6	ARK	F-22-82-01-1(22)	38	7



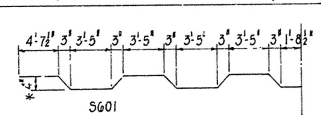
Boiled Linseed Oil Treatment shall be applied to the roadway surface and to the top and face of concrete parapet railing. See 605 of the Standard Specifications.



BAR LIST

Mark	No. Req'd	Length	Pin Dia
S601	252	43'-7"	3/8"
S602	10	13'-5"	Str.
S603	70	12'-6"	Str.
S604	120	15'-1"	Str.
S605	24	5'-5"	Str.
S606	46	27'-0"	Str.
S607	96	24'-0"	Str.
S501	466	42'-6"	Str.
S502	266	5'-0"	Str.
S401	760	24'-0"	Str.
S402	320	6'-0"	2"
S403	320	6'-10"	2"
S404	448	3'-2"	2"
S405	446	6'-4"	2"
S406	8	13'-5"	Str.
S407	56	12'-8"	Str.
S408	96	15'-1"	Str.

Bending Diagram (Dimens are out to out of bars)

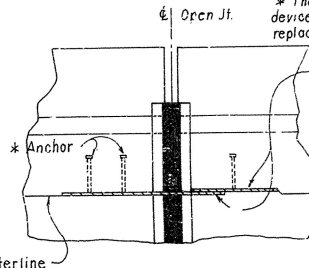
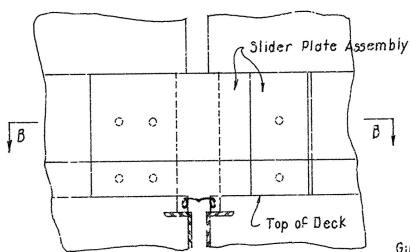
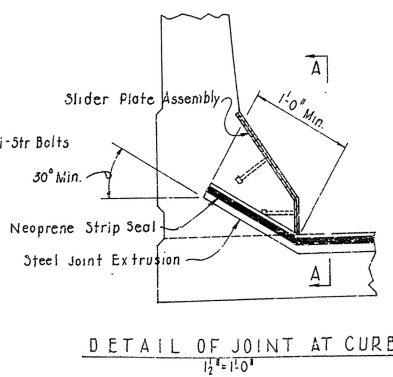
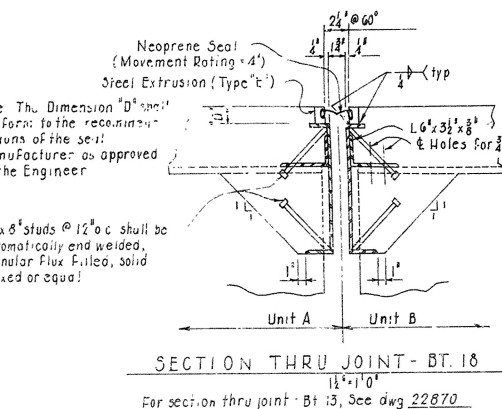


For bending diagrams not shown, see dwg. 22864

* No Undertolerance 1/2" Overtolerance

Note: For Half-Section at end of span showing Finger Jt. and other details, see dwg. 22872

Note: Details of joint turn up in curb and parapet are general and only basic design controls. See dwg. 22869. For expansion joint no. Also see SP Job 1523, Armored Joint with Neoprene Strip Seal. * The method of attachment of the slider plate assembly or similar device must be such that it may be removed in order to provide for replacement of the neoprene seal.



Slider plates shall be A36. The surfaces of the plates which will not be in contact with concrete shall receive two coats of paint in the shop. These coats shall be those specified First Shop Coat and Second Field Coat in subsection 807.30.

DETAILS OF 292' CONT. W-BEAM UNIT WHITE RIVER BR. & APPRS. (ST CHARLES ARKANSAS & MONROE CO. ROUTE 1 SEC. 5 & 6)

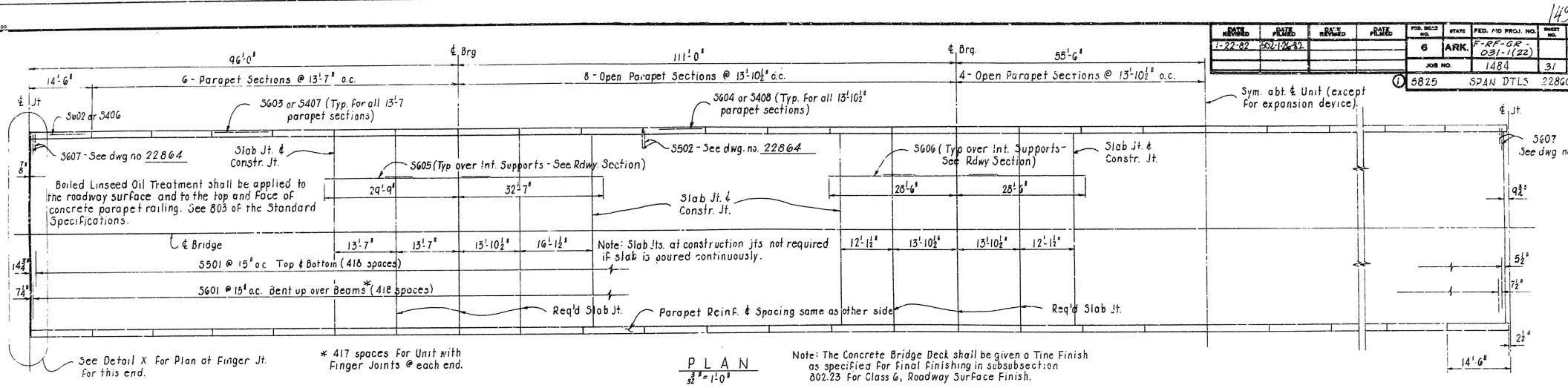
ARKANSAS STATE HIGHWAY COMMISSION

BRIDGE NO. 5825 LITTLE ROCK, ARK. DATE: 6-20-79 CHECKED BY: GEL DATE: 7-2-79 DESIGNED BY: MCE DATE: 6-6-79 SCALE: As Shown

Revised: Length of S401, 1-22-82, L.M.

BRIDGE ENGINEER

DRAWING NO. 22867



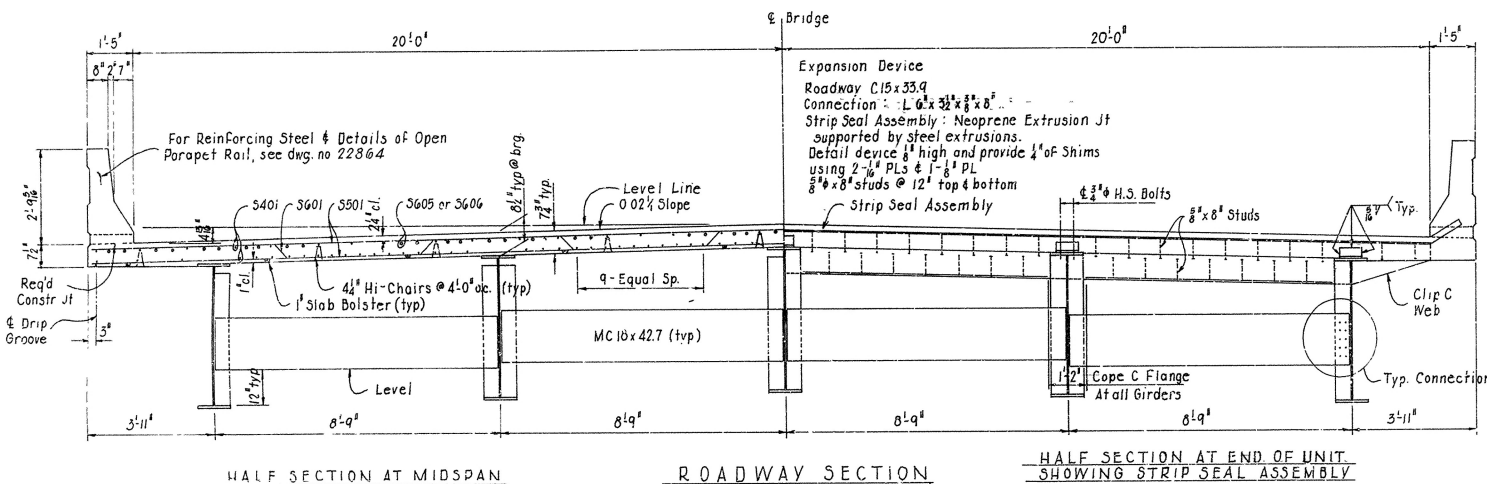
BAR LIST

Mark	No. Req'd.	Length	Pin Dia.	Bending Diagram (Dimens are out rout of bars)
S601	**	43'-6"	3/8"	<p>S601</p>
S602	20	14'-0"	Str.	
S603	120	13'-2"	Str.	
S604	240	13'-5"	Str.	
S605	300	22'-5"	Str.	
S606	300	20'-4"	Str.	
S607	24	6'-3"	Str.	
S501	858	42'-6"	Str.	<p>S501</p>
S502	518	5'-10"	Str.	
S401	1456	34'-0"	Str.	
S402	608	6'-0"	2"	
S403	608	6'-10"	2"	
S404	760	3'-2"	2"	
S405	760	6'-4"	2"	
S406	16	14'-0"	Str.	
S407	96	13'-2"	Str.	
S408	192	12'-5"	Str.	

For bending diagrams not shown, see dwg. 22864.

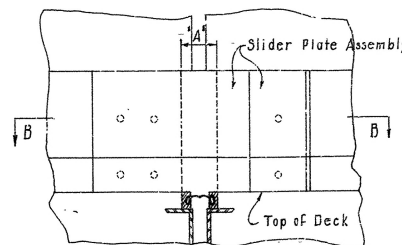
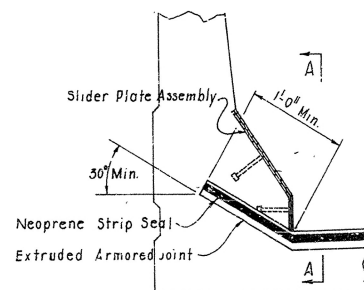
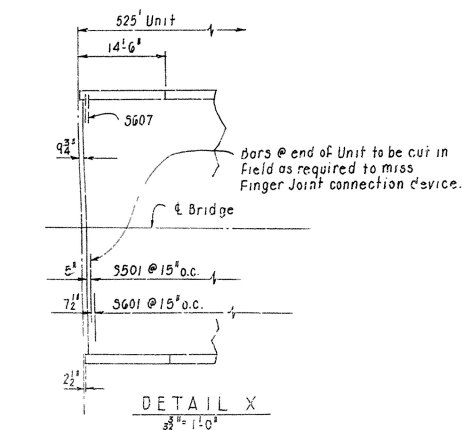
* No Under tolerance
1/2" Over tolerance

** 418 For Unit with Finger Jt. @ each end.
419 For Unit with Finger Jt. & Strip Seal

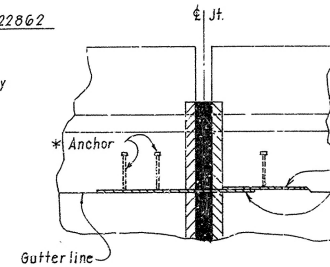


HALF SECTION AT END OF UNIT SHOWING STRIP SEAL ASSEMBLY

Note: For Half Section at End of Unit showing Finger Joint and other details, see dwg 22862
 For additional Neoprene Strip Seal Details, See dwg. 22862



Note: Dimension "A" equals the width of opening in parapet of curb to allow for removal or repair of joint.



Revised: Length of S401, 1-22-82, L.M.

Resal Pinkerton
 BRIDGE ENGINEER

Note: Details of Joint turn up in curb and parapet are general and show only basic design controls. See dwg. For expansion joint notes. Also see SP Job 1523.
 * Armored Joint with Neoprene Strip Seal.
 * The method of attachment of the slider plate assembly or similar device must be such that it may be removed in order to provide for future replacement of the neoprene seal.

Slider plates shall be 436". The surface of the plates which will not be in contact with concrete shall receive two coats of paint in the shop. These coats shall be those specified as First Shop Coat and Second Field Co. subsubsection 307.59 (a+c). **SHEET 1 OF 4**

**DETAILS OF 525' CONT. PL GIRDER U
 WHITE RIVER BR. & APPRS. (ST. CHAR
 ARKANSAS & MONROE CO.**

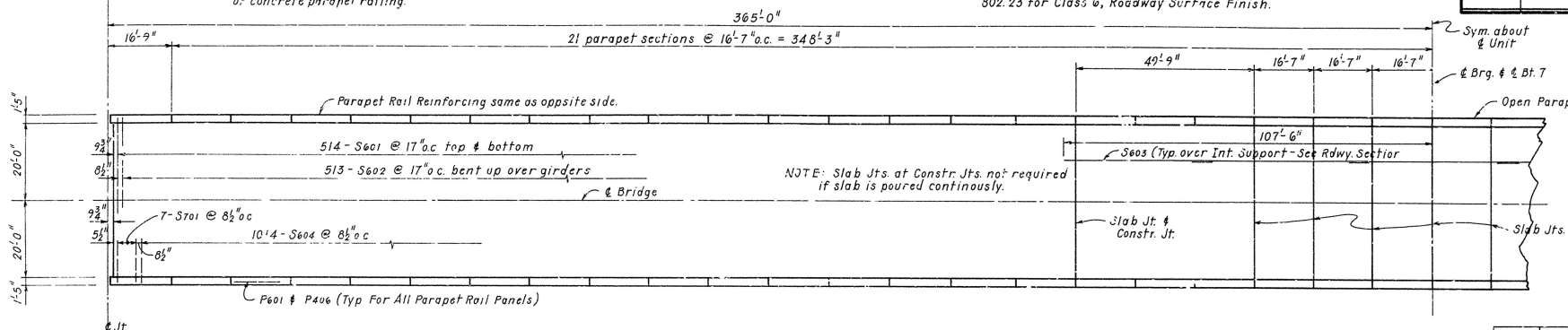
**ROUTE 1 SEC. 5 & 6
 ARKANSAS STATE HIGHWAY COMMISSION**

LITTLE ROCK, ARK.
 DRAWN BY: L.M. DATE: 6-7-79
 CHECKED BY: J.E.F. DATE: 6-22-79
 DESIGNED BY: T.H.C. DATE: 6-6-79
BRIDGE NO. 5825 **DRAWING NO. 22864**

NOTE: Boiled Linseed Oil Treatment shall be applied to the roadway surface and to the top and face of concrete parapet railing.

NOTE: The Concrete Bridge Deck shall be given a fine finish as specified for final finishing in subsection 502.23 for Class 6, Roadway Surface Finish.

REVISION	DATE	REVISION	DATE	FED. ROAD NO.	STATE	FED. AID PROJ. NO.	FED. PROJ. NO.
				6	ARK.	730' UNIT	228
						JOB NO. 1523	4



4" x 1" Poured Synthetic
It in slab to be paid for a
S(A.E.) Concrete if slab jo
to be sawed, they shall be
before any vehicular traf
allowed on the Unit.

SLAB JOINT (TYP)
N.T.S.

BAR LIST (FOR UNIT)

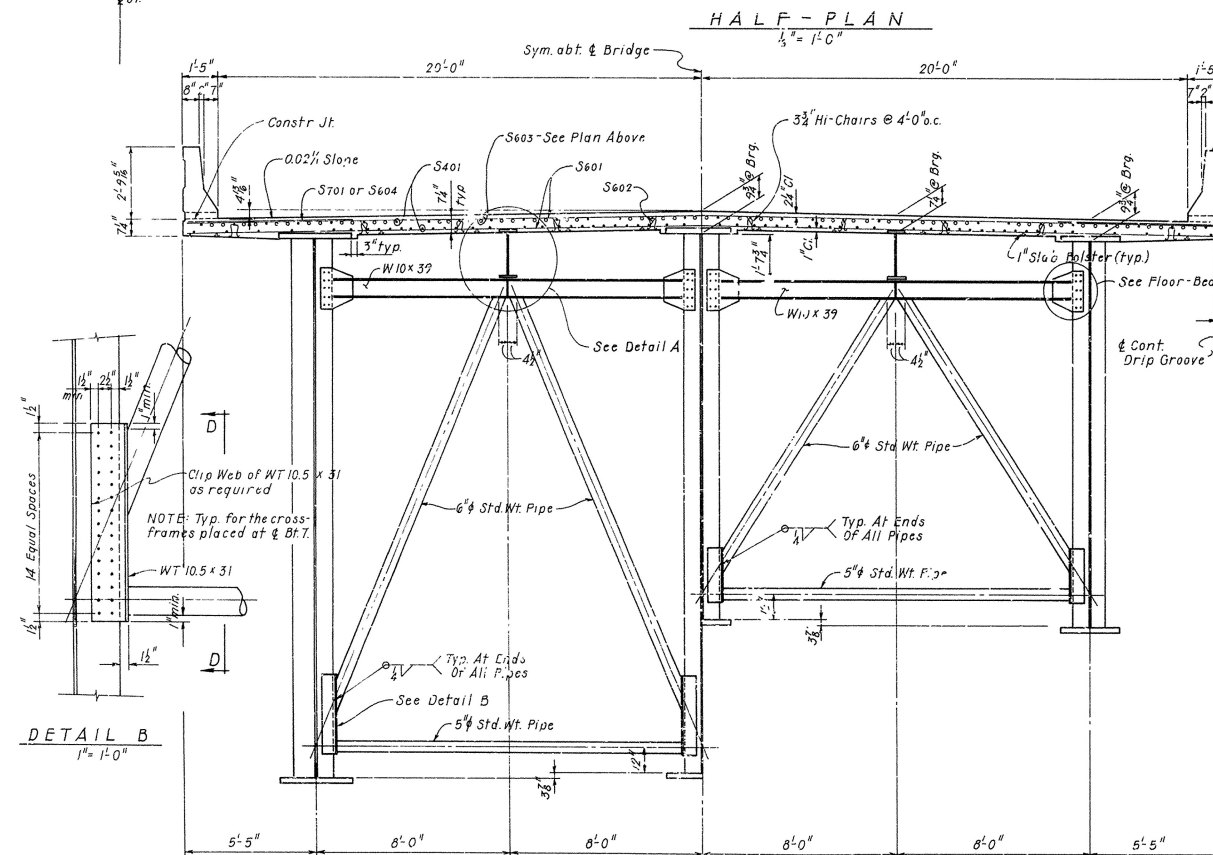
BAR	No. Req'd	Length	Pin Dia	Bending Diagrams
S601	1028	42'-6"	Str	
S602	513	43'-4"	3 3/8"	
S603	270	45'-0"	Str	
S604	2028	7'-9"	Str	
S701	28	8'-2"	Str	
S401	1748	40'-0"	Str	
P601	440	16'-3"	Str	
P401	704	6'-0"	2"	
P402	704	6'-0"	2"	
P404	1056	3'-2"	2"	
P405	1056	6'-4"	2"	
P406	352	16'-3"	Str	

Sym. abt. & Unit

*No Undertolerance; 1/2" Overtolerance

For bending diagrams not shown
see dwg. no. 22882.

Dimens are out to out of bars.

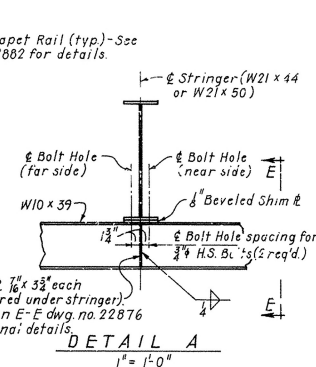


HALF-SECTION AT BENT NO 7

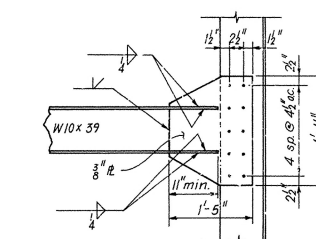
HALF-SECTION OF INT. CROSS-FRAMES

TYP. ROADWAY SECTION

8" = 1'-0"



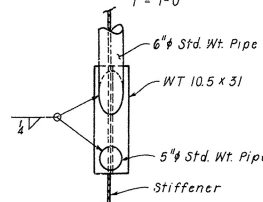
DETAIL A
1" = 1'-0"



DETAIL B
1" = 1'-0"

FLOOR BEAM CONNECTION (TYP)

1" = 1'-0"



SECTION D-D

N.T.S.

(SHEET 1 OF 10)

DETAILS OF 730' CONT. PL. GIRDER
WHITE RIVER
WHITE RIVER BR. & APPRS. (ST. CHAR)
ARKANSAS & MONROE CO.
ROUTE 1 SEC. 5 & 6

ARKANSAS STATE HIGHWAY COMMISS

LITTLE ROCK, ARK.

DRAWN BY: *Handwritten* DATE: 6-8-79
CHECKED BY: *Handwritten* DATE: 8-1-79
DESIGNED BY: *Handwritten* DATE: 6-9-79

BRIDGE NO. 5825

SCALE: As Shown
DRAWING NO. 22