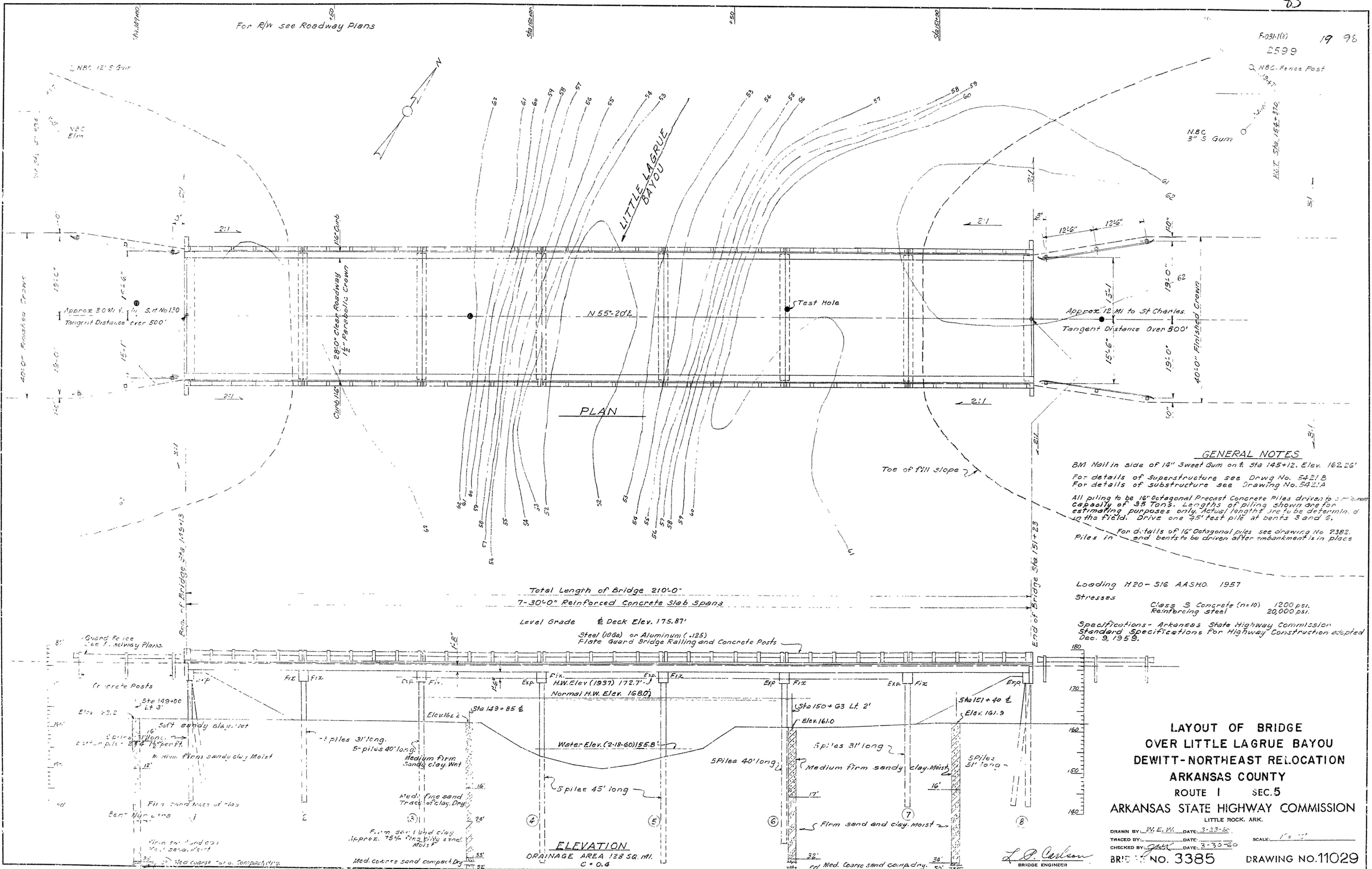
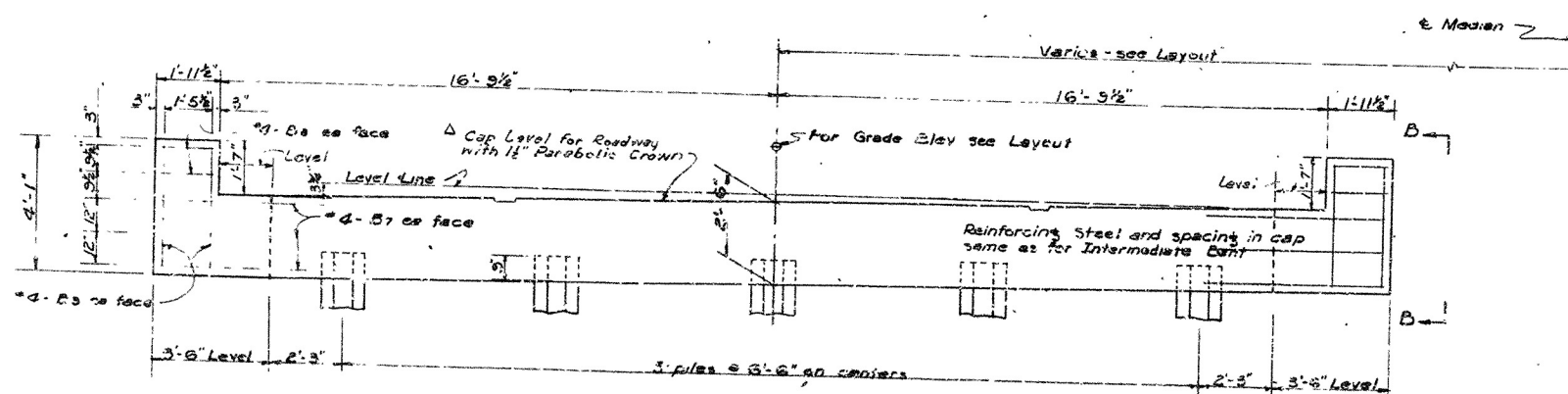
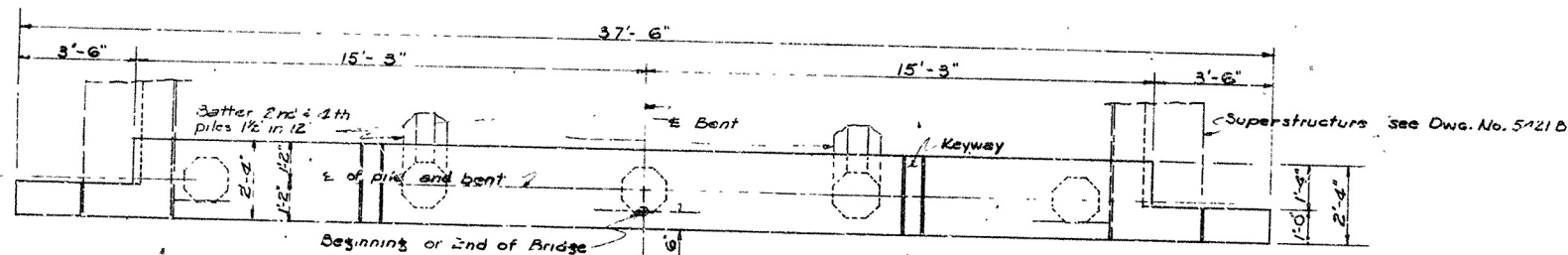
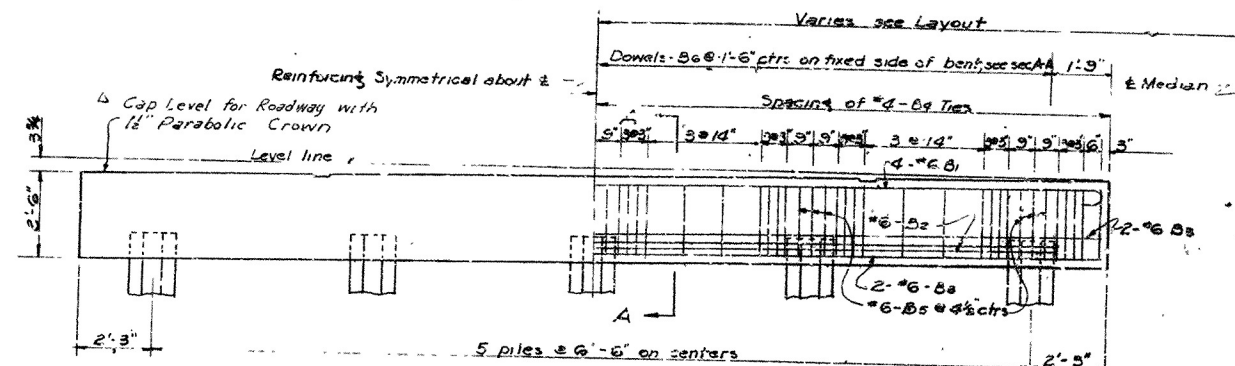
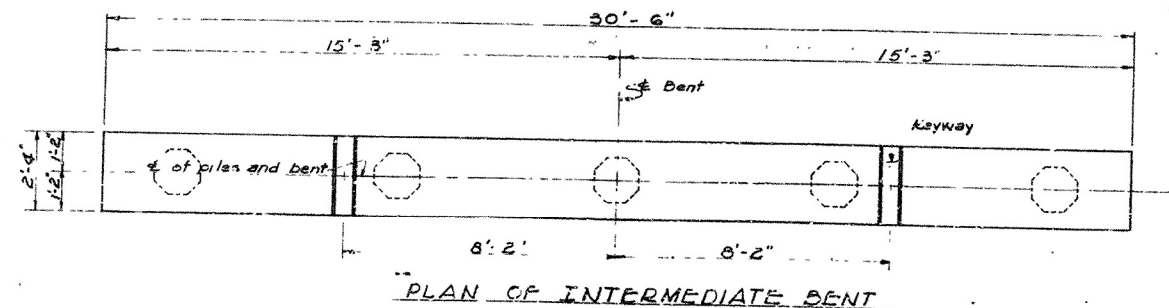
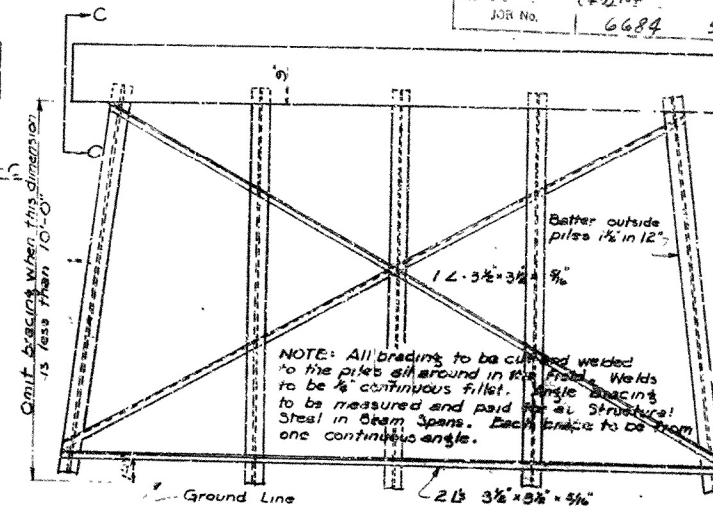
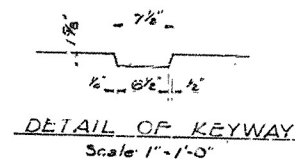
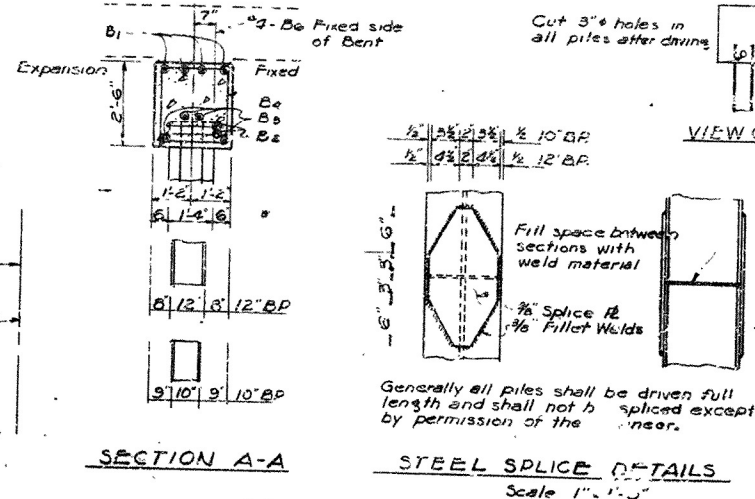


For R/W see Roadway Plans





NOTE: Reverse crown when the median is on the left.



GENERAL NOTES

All concrete to be Class S and shall be poured in the dry. All exposed corners to be chamfered 1/4" unless otherwise noted. Reinforcing steel to be deformed bars of intermediate grade unless otherwise noted by Special Provisions. Shop lists and bending diagrams are to be submitted for approval before fabrication is begun. All piling shall be driven to a minimum capacity of 55 tons per pile. Piling shall be either 10" H&B, 12" H&B, steel bearing piles or 16" octagonal precast concrete piles as shown on the layout. Volume occupied by embedded pile heads will not be included in the pay quantities of concrete caps. For Details of Standard 30'-0" R.C. Slab Spans see Drawing No. 5421B. SPECIFICATIONS: Arkansas State Highway Commission Standard Specifications for Highway Construction, Edition of 1959.

BAR LIST PER BENT

MARK	SIZE	NO. PER BENT	END	INT	LENGTH	BENDING DIAGRAM
B1	#6	4	4	4	3'-6"	B1
B2	#6	4	4	4	3'-6"	
B3	#6	4	4	4	30'-1"	B3
B4	#4	50	50	50	6'-11"	
B5	#6	15	15	15	6'-5"	B5
B6	#4	12	12	12	2'-6"	
B7	#4	12	12	12	5'-0"	B7
B8	#4	8	8	8	1'-8"	
B9	#4	8	8	8	3'-9"	B9
B10	#4	8	8	8	3'-9"	

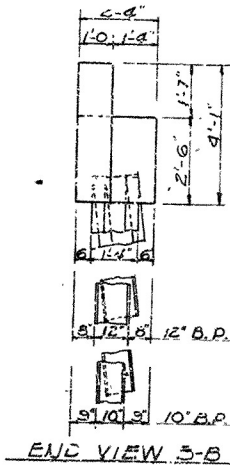
Dimensions are to centers of bars

DETAILS OF STANDARD PILE BENTS FOR STD. 30'-0" R.C. SLAB SPANS

28'-0" CLEAR ROADWAY 2 CURBS @ 1'-6" ROUTE SEC.

ARKANSAS STATE HIGHWAY COMMISSION LITTLE ROCK, ARK.

DRAWN BY: DATE: 7-16-57  
CHECKED BY: DATE: 8-1-57  
BRIDGE NO. DRAWING NO. 5421A  
FILED AS Dwg No. 100-23-A

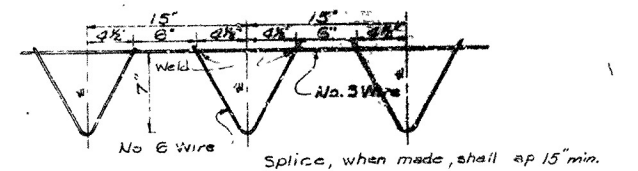


Parabolic Crown Note Added 3-25-60 F.R.B. Std Specification title 6-1-60 H.B.

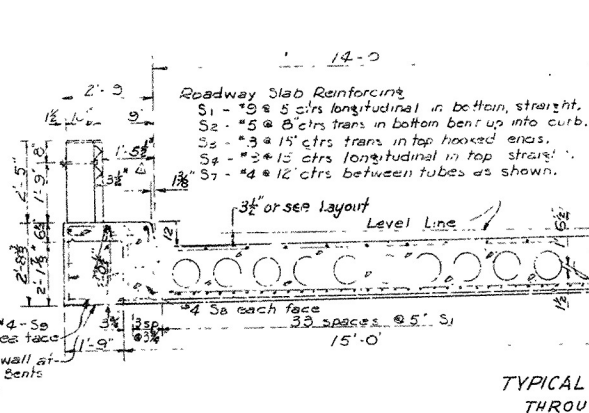
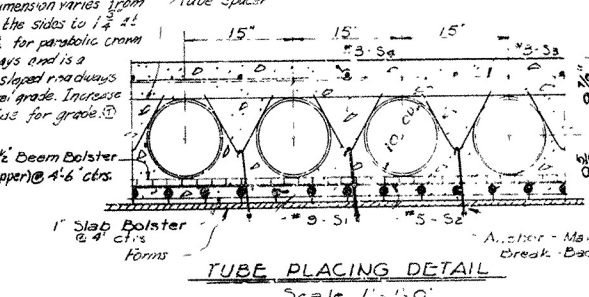
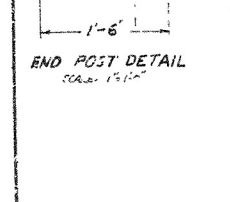
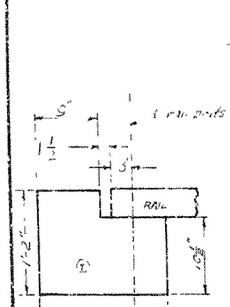
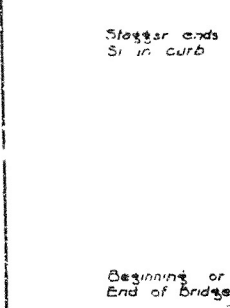
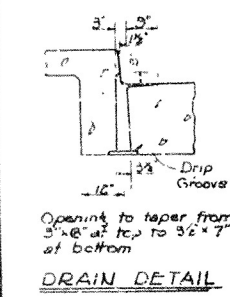
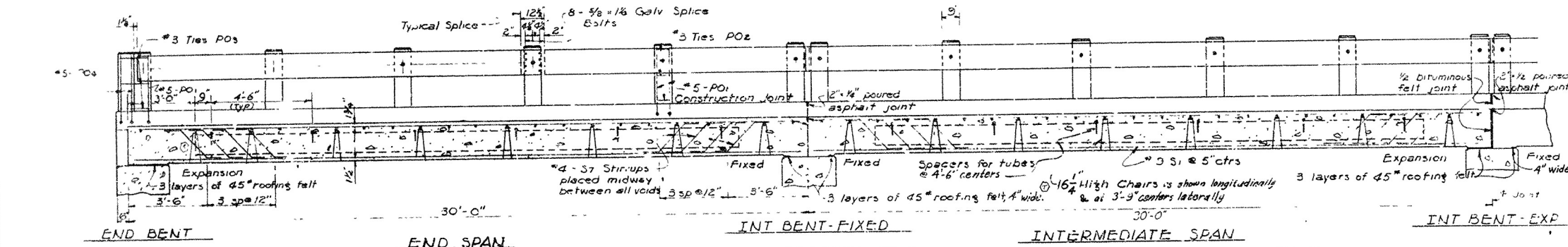
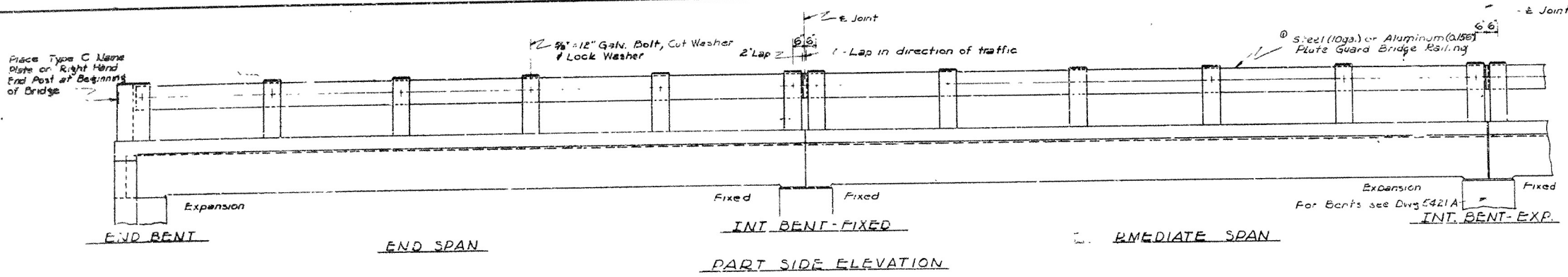
DATE	BY	REVISION	SHEET NO.	TOTAL SHEETS
1961			1	1

**DESIGN SPECIFICATIONS - 1961**  
Design Live Loading: HS-20 and Special Loading of two 25,000 pound axles 4'0" apart  
Load distribution to slab: 1.82  
Unit Stresses: Class 5 Concrete (1500) 1200%  
Reinforcing Steel: 27,000%  
Load Factor: 1.74  
Width: 30' Imperv

**GENERAL NOTES**  
All concrete to be Class 5. All exposed surfaces to be chamfered 1/4" unless otherwise noted.  
Reinforcing steel to be deformed bars of intermediate or hard grade.  
Diagrams must be submitted and approved before fabrication is begun.  
All cylindrical tubes used to form voids shall be moisture protected, laminated type construction, minimum thickness 0.225", and shall be furnished complete with end closures.  
All reinforcing steel and wire tubes shall be accurately located in the forms and firmly held in place by means of steel wire supports and spacers for tubes of sufficient size and number to prevent displacement during the course of construction, but in no case of lesser design than that shown.  
Wire supports for reinforcing bars will be paid for directly but will be considered subsidiary to the item of Reinforcing Steel.  
Tubes for forming voids and wire supports and spacers for tubes will not be paid for directly but will be considered subsidiary to the item of Class 5 Concrete.  
Shop lists and diagrams of wire supports and spacers for tubes shall be submitted for approval before reinforcement is begun.  
Roofing felt, bituminous felt and waterproofing joints shall be measured and paid for as Class 3.  
Steel or Aluminum Plate Guard Bridge Railings shall be the type shown or an equivalent rigid type as approved by the Engineer. The rail including posts and fastenings shall be paid for at the unit price bid per linear foot for Steel or Aluminum Plate Guard Bridge Railings.  
SPECIFICATIONS - Arkansas State Highway Commission Standard Specifications for Highway Construction, Edition of 1953.



**SPACER DETAIL**  
Scale 1/2" = 1'-0"



**BAR LIST PER SPAN**

Mark	Size	No. Bars per Span	Length	Bending Diagram
S1	#9	75	29'-7"	Str
S2	#5	45	33'-9"	Str
S3	#3	24	30'-7"	Str
S4	#3	23	29'-7"	Str
S5a	#4	8	30'-1"	Str
S5b	#4	94	96	7'-8"
S7	#4	168	168	3'-1"
S8	#4	12	2'-5"	Str
S9	#4	12	2'-5"	Str
PO1	#5	22	24	5'-10"
PO2	#5	30	36	2'-8"
PO3	#3	6	4'-7"	
PO4	#5	4	6'-1"	

Dimensions are to centers of bars  
\*Non Pay Items

Revised for 12" curb ht. 2-17-61. F.M.H.  
Revised End Post. 11-2-61. R.W.M.  
Revised Bridge Guard Rail. 4-2-60 C.E.V.  
Revised S.B.B. 9-30-60. 2nd C.E.V. 9-2-61

Revised Tube Spacing 2-14-61  
8-29-62  
Rev. for Parabolic Crown  
S.B.B. 2-14-61

**DETAILS OF STANDARD 30'-0" R.C. SLAB SPANS (WITH VOIDS)**  
8'-0" CLEAR SPAN - 2 CURBS • 1'-6"

**ARKANSAS STATE HIGHWAY COMMISSION**  
DRAWN BY: [Signature] DATE: 1-10-60  
CHECKED BY: [Signature] DATE: 1-10-60  
BRIDGE NO. [Blank] DRAWING NO. 5421A