

DATE REVISION	DATE	REVISION	DATE	REVISION	DATE	FED. ROAD NO.	STATE	FED. AID PROJ.	FISCAL YEAR	SHEET NO.	TOTAL SHEETS
						6	ARK.	5/11/72		17	62
								2776			
								5498			

#### GENERAL NOTES:

BENCH MARK - N.I.S. 18" OAK, 5" LT. STA. 286+42, ELEV. 112.55.  
ALL CONCRETE SHALL BE POURED IN THE DRY.

ALL PILING SHALL BE 16" OCTAGONAL PRECAST CONCRETE AND SHALL BE DRIVEN WITH AN APPROVED AIR, STEAM, OR DIESEL HAMMER TO A MINIMUM BEARING CAPACITY OF 44 TONS PER PILE, AND TO A MINIMUM PENETRATION OF 20 FEET BELOW THE GROUND LINE. LENGTHS OF PILING SHOWN ARE ASSUMED FOR ESTIMATING QUANTITIES ONLY. ACTUAL LENGTHS TO BE DETERMINED IN THE FIELD. DRIVE ONE 30" TEST PILE IN BENT NO. 3.

PILES IN END BENTS TO BE DRIVEN AFTER EMBANKMENT TO SUBGRADE IS IN PLACE.

FOR DETAILS OF BENTS, SEE DWG. NO. 14937A.  
FOR DETAILS OF 25' R.C. SLAB SPANS, SEE DWG. NO. 14936.  
FOR DETAILS OF PRECAST CONCRETE PILING, SEE DWG. NO. 2382.

SPECIFICATIONS: ARKANSAS STATE HIGHWAY COMMISSION STANDARD SPECIFICATIONS FOR HIGHWAY CONSTRUCTION, EDITION OF 1972, AND APPLICABLE SPECIAL PROVISIONS.

DESIGN SPECIFICATIONS: AASHTO 1969  
LIVE LOADING: HS20

UNIT STRESSES: CLASS S CONCRETE (N=10) 1,200 PSI  
REINFORCING STEEL 20,000 PSI

NOTE:  
THE CONTRACTOR SHALL REMOVE THE FOLLOWING EXISTING BRIDGES.

M1938 - 84' BRIDGE, 33' RIGHT STA. 293+61 TO STA. 296+47. SEVEN SPANS, TIMBER STRINGERS WITH TIMBER DECK ON TIMBER BENTS.

M1939 - 27' BRIDGE, 34' RIGHT STA. 295+83 TO STA. 296+10. TWO SPANS, TIMBER STRINGERS WITH TIMBER DECK ON TIMBER BENTS.

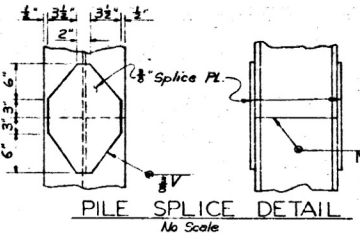
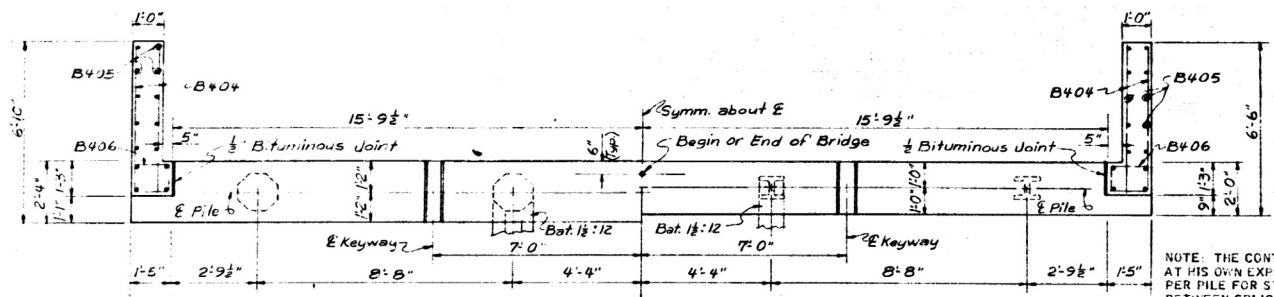
The existing bridges shall be used as a detour and removed after the new bridge is open to traffic.  
All material from the existing bridges shall become the property of the Contractor.

LAYOUT OF BRIDGE  
OVER FOUNTAIN CREEK RELIEF  
FOUNTAIN HILL - SOUTHWEST  
BRIDGES & APPROACHES  
ASHLEY COUNTY  
ROUTE 133 SEC. 2  
ARKANSAS STATE HIGHWAY COMMISSION  
LITTLE ROCK, ARK.

DRAWN BY: RPH DATE: 5 Oct. 72  
TRACED BY: DATE: 12 Oct. 72  
CHECKED BY: FH DATE: 9 Oct. 72  
SCALE: 1" = 10' 0"  
BRIDGE NO. 5498 DRAWING NO. 17894

240-235

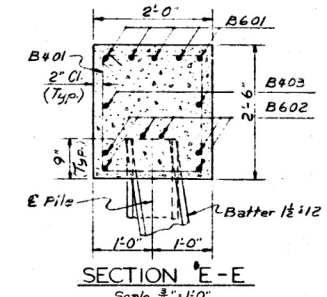
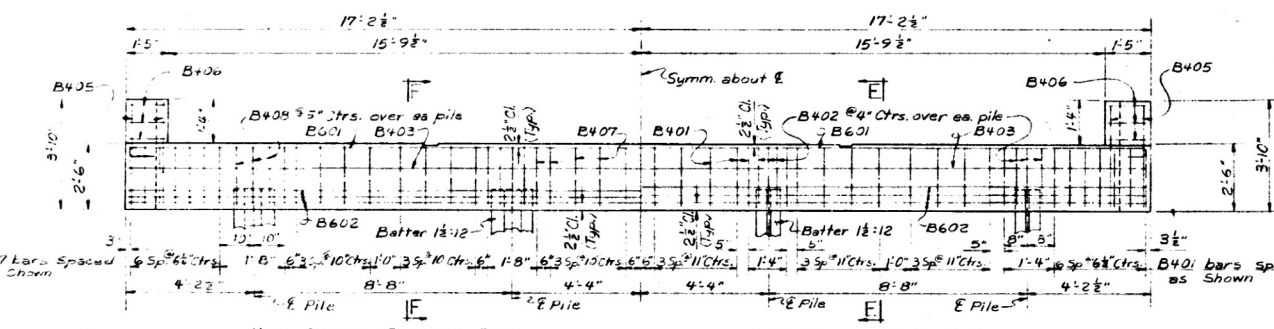
REVISED	DATE	REVISED	DATE	FED. ROAD NO.	STATE	FED. AID PROJ. NO.	FISCAL YEAR	SHEET NO.	TOTAL SHEETS
				6	ARK.	511(3)		19	32
				JOB NO.	5498		Bents	17894 B	



(EACH BENT)  
BAR LIST USING STEEL PILES

BENDING DIAGRAM	MARK	No. REQD.	END	INT.	LENGTH	PIN DIA.
B407	B401	44			8'-2"	2"
B401	B402	12			5'-8"	2"
	B403	2			3'-0"	Str.
	B404	18			5'-5"	Str.
	B405	28			3'-6"	Str.
	B406	6			4'-4"	2"
	B407	41			8'-10"	2"
	B601	12			6'-2"	2"
	B602	2			30'-4"	Str.
	B603	6			3'-6"	Str.
	B604	6			30'-4"	Str.
	B605	6			6'-0"	Str.

Dimensions are out to out of bars.

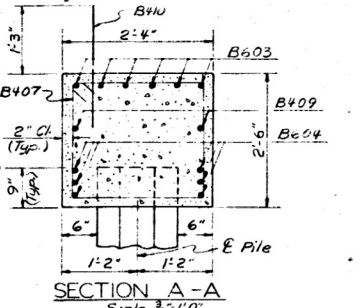
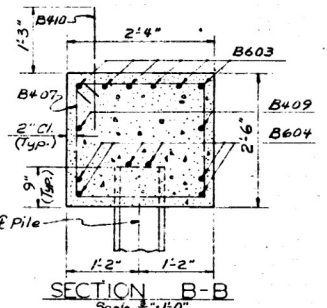
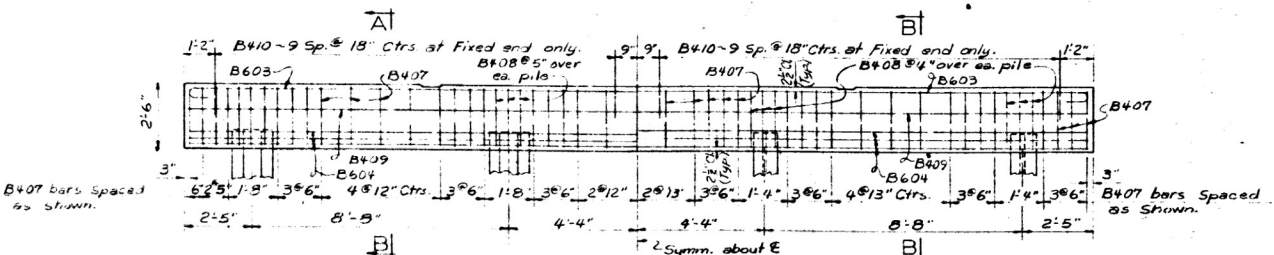
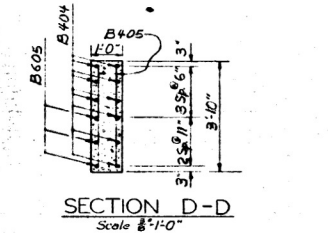
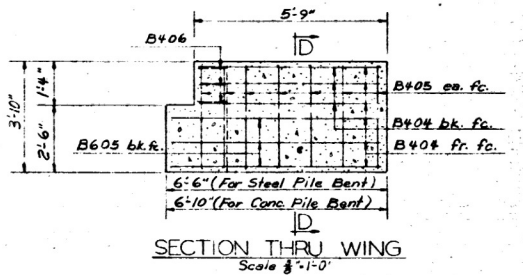
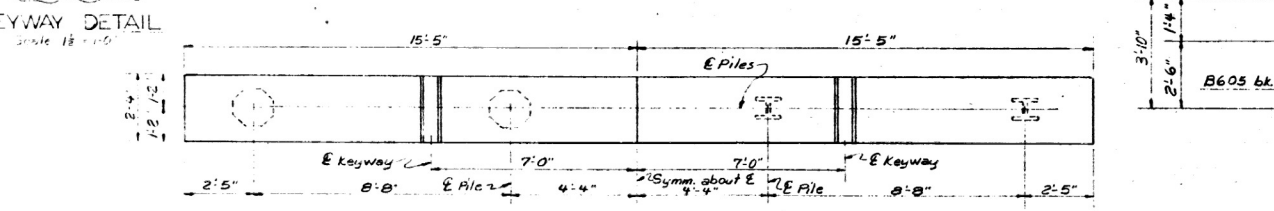


\* 20 Req'd at Fix-Exp Bent.  
40 Req'd at Fix-Fix Bent.

(EACH BENT)  
BAR LIST USING CONCRETE PILES

BENDING DIAGRAM	MARK	No. REQD.	END	INT.	LENGTH	PIN DIA.
B403	B403	2			3'-0"	Str.
B404	B404	18			5'-5"	Str.
B405	B405	28			3'-6"	Str.
B406	B406	6			4'-4"	2"
B407	B407	44			8'-10"	2"
B408	B408	12			6'-2"	2"
B409	B409	2			30'-4"	Str.
B410	B410	6			3'-6"	Str.
B601	B601	12			6'-2"	2"
B602	B602	2			30'-4"	Str.
B603	B603	6			3'-6"	Str.
B604	B604	6			30'-4"	Str.
B605	B605	6			6'-0"	Str.

Dimensions are out to out of bars.



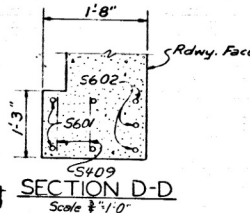
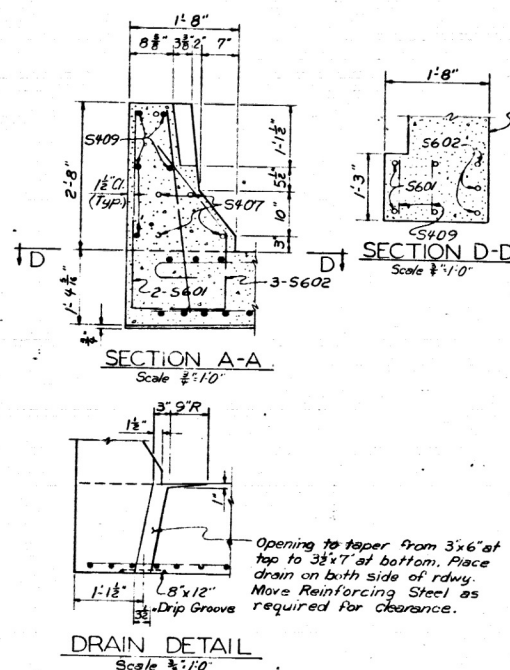
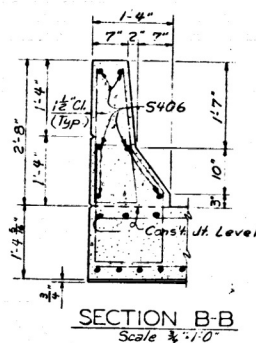
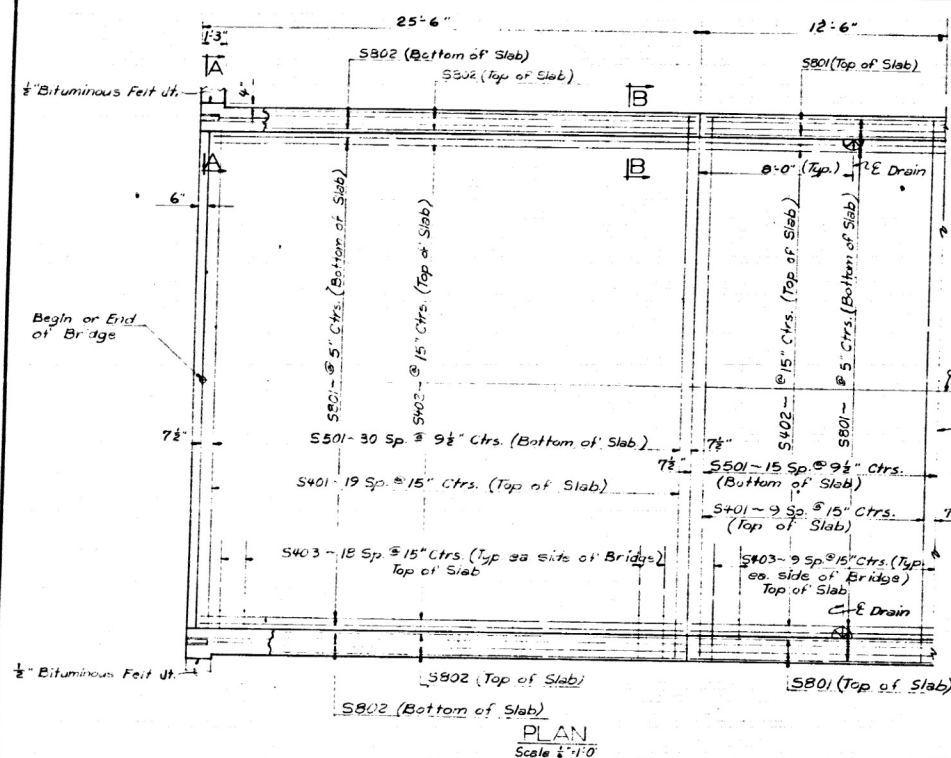
GENERAL NOTES  
ALL CONCRETE SHALL BE CLASS "S" AND SHALL BE POURED IN THE DRY. ALL EXPOSED CORNERS CHAMFERED 3/4" UNLESS OTHERWISE NOTED.  
REINFORCING STEEL SHALL BE DEFORMED BARS OF ASTM A615, GRADE 40. SHOP LISTS AND BENDING DIAGRAMS MUST BE SUBMITTED FOR APPROVAL BEFORE FABRICATION IS BEGUN.  
ALL PILING SHALL BE 16" OCTAGONAL PRECAST CONCRETE OR HP10X42 STEEL BEARING PILES. SEE LAYOUT FOR REQUIRED BEARING CAPACITY.

DETAILS OF STANDARD PILE BENTS  
WITH TURN-BACK WINGS  
FOR 25' R.C. SLAB SPANS WITH  
28' RDWY. & CONCRETE PARAPET RAIL  
ROUTE SEC.

ARKANSAS STATE HIGHWAY COMMISSION

LITTLE ROCK, ARK.  
DRAWN BY: D.B.H. DATE: 9-26-72  
TRACED BY: DATE: 12-17-72  
CHECKED BY: F.H. DATE: 12-17-72  
BRIDGE NO. 5498 DRAWING NO. 14937A

Files as Drawing No. 17894 B



DATE REVISED	DATE FILMED	DATE REVISED	DATE FILMED	FED. ROAD NO.	STATE	FED. AID FUND.	FISCAL YEAR	SHEET NO.	TOTAL SHEETS
				6	ARK.	5	5/1/83		
				JOB NO.	2776			21	64

5 ① 5498 25' Span 17894A

MARK	No. REQ.		LENGTH	PIN DIA.
	END SPAN	INT. SPAN		
S401	20	20	31'-4"	3"
S402	23	23	24'-10"	Str.
S403	38	38	6'-10"	3"
S404	58	60	5'-7"	3"
S405	58	60	7'-0"	2"
S406	12	24	12'-3"	Str.
S407	10	-	12'-9"	Str.
S408	2	-	11'-9"	Str.
S409	10	-	1'-0"	Str.
S501	31	31	30'-4"	Str.
S601	4	-	8'-1"	3"
S602	6	-	3'-9"	3"
S801	67	81	24'-8"	Str.
S802	14	-	25'-2"	Str.

BENDING DIAGRAMS

Dimensions are out to out of bars.

### GENERAL NOTES

ALL CONCRETE TO BE CLASS S. ALL EXPOSED CORNERS TO BE CHAMFERED 3/4" UNLESS OTHERWISE NOTED.

REINFORCING STEEL TO BE ASTM A615, GRADE 40. SHOP LISTS AND BENDING DIAGRAM MUST BE SUBMITTED AND APPROVAL SECURED BEFORE FABRICATION IS BEGUN.

BAR SUPPORTS FOR REINFORCING BARS WILL BE PAID FOR DIRECTLY, BUT WILL BE CONSIDERED SUBSIDIARY TO THE ITEM "REINFORCING STEEL". SHOP LISTS AND DIAGRAMS OF BAR SUPPORTS SHALL BE SUBMITTED FOR APPROVAL BEFORE FABRICATION IS BEGUN.

ROOFING FELT, BITUMINOUS FELT, PREFORMED JOINT, AND SYNETIC POLYMER SHALL BE MEASURED AND PAID FOR AS CLASS 5 CONCRETE.

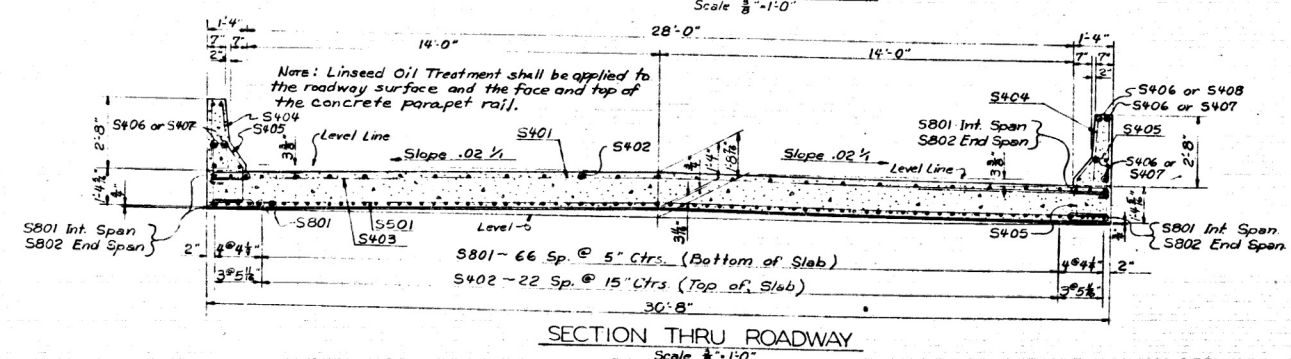
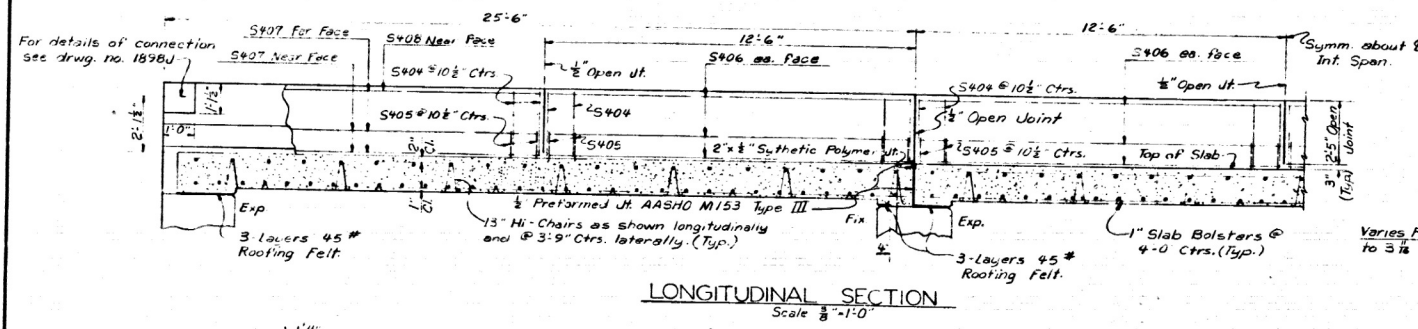
SPECIFICATIONS: ARKANSAS STATE HIGHWAY COMMISSION STANDARD SPECIFICATIONS FOR HIGHWAY CONSTRUCTION, EDITION OF 1972.

DESIGN SPECIFICATIONS: AASHO 1969  
DESIGN LIVE LOADING: HS20

### LOAD DISTRIBUTION TO STUDENTS

LIVE LOAD - 0.184 WHEELS/FT. OF WIDTH PLUS 30% IMPACT.

UNIT STRESSES: CLASS 5 CONCRETE (N=10) 1,200 PSI  
REINFORCING STEEL 20,000 PSI



DETAILS OF STANDARD  
25'-0" R.C. SLAB SPAN  
28'-0" CLEAR ROADWAY  
CONCRETE PARAPET RAILING

ROUTE SEC.  
ARKANSAS STATE HIGHWAY COMMISSION

LITTLE ROCK, ARK.

DRAWN BY: D.B.H. DATE: 8 Nov. 72

TRACED BY: \_\_\_\_\_ DATE: \_\_\_\_\_ SCALE: As Noted

CHECKED BY: JED DATE: 9/24/72  
BRIDGE NO. 5498 DRAWING NO. 14936

Files as Drawing No. 17894A