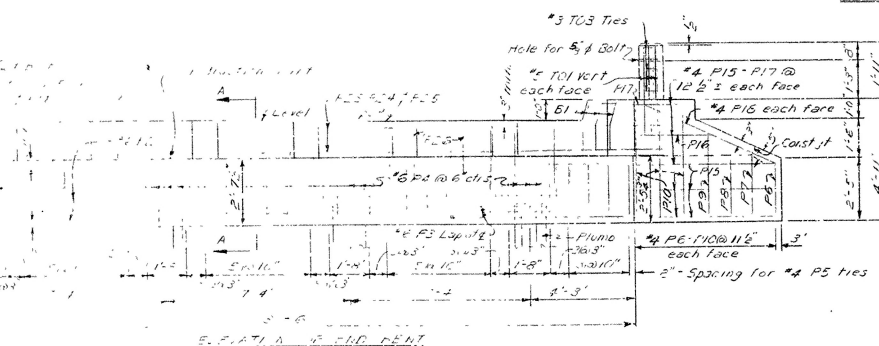


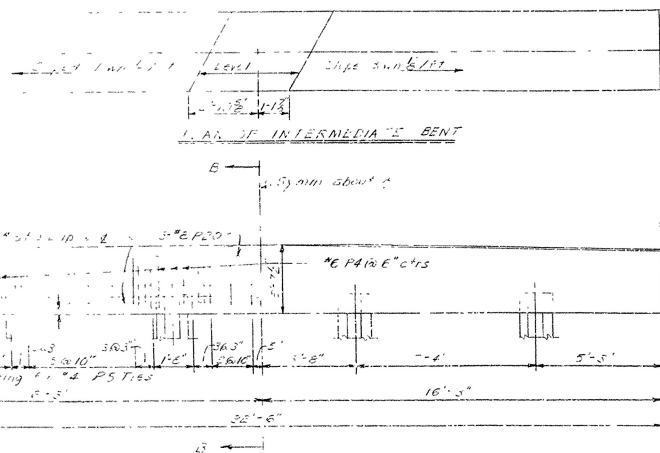
No. Reg'd.		Brd		Length	If dimensions are in ft.
Mark	Size	End	End		
B1	"3	4		2'-5"	
B2	"4	1		2'-3"	
F1	"8	3		31'-2"	
P2	"6	4		31'-2"	
F3	"6	4	4	27'-0"	
P4	"6	12	12	2'-11"	
P5	"4	50	50	10'-3"	
P6		4		3'-2"	
P7		4		2'-7"	
P8		2		3'-2"	
P9		2		3'-5"	
P10		12		4'-7"	
P11		2		3'-2"	
P12		6		8'-2"	
P13		2		2'-1"	
P14		2		1'-10"	
P15		6		7'-6"	
P16		4		3'-4"	
P17		2		2'-10"	
P18				2'-7"	
P19	"4			2'-1"	
P20	"8			3'-2"	
P21	"6			1'-2"	
P22	"6			1'-2"	
P23	"4	2		6'-0"	
P24		2		11'-2"	
P25				3'-2"	
P26	"4	23		2'-6"	
T01	"5	8		4'-4"	
T02	"3	3		2'-2"	
T03	"3	3		2'-2"	
				2'-2"	

GENERAL NOTES

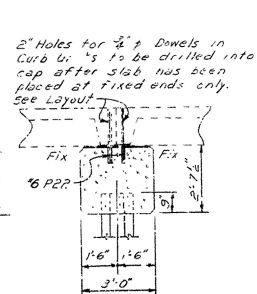
Above the concrete floor, the
 slabs are to be reinforced with
 1/2" round bars at 12" on center.
 Turnout just to the left of the
 line. First 10' Steel Plate Bents
 Reinforcing steel to be placed in
 grade or below grade as required.
 will be reinforced and spalled material
 removed. A concrete and rebar
 will be placed and rebar will be
 2" to 3" in diameter.
 2" to 3" in diameter.



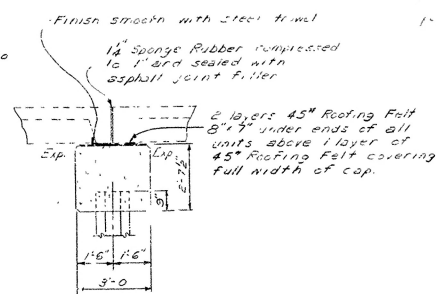
SECTION A-1



ELEVATION OF INTERMEDIATE BENT



SECTION B-B
(Fix)
Showing St. Dowels
See Drawg. No 5292 For Curb Units



SECTION B-B
(EXP)

DETAILS OF STANDARD
CONCRETE PILE BENTS
FOR 31'-0" PRESTRESSED SLAB
24'-0" CLEAR RDWY.-9" CURB-3

ROUTE SEC.
ARKANSAS STATE HIGHWAY COM

LITTLE ROCK, ARK.
5-14-68

DRAWN BY: *PAJ* DATE: *5-14-63* *5-14-63*

TRACED BY 251 DATE 4/16/63 SCALE 2-10

CHECKED BY: JFL DATE: 5-18-99

BRIDGE NO. 3779 DRAWING NO. 100

12

F. 1/8 3. Draw 12455 H

Downloaded from <http://www.jstor.org/stable/2346092> on Tue, 20 Jun 2016 12:02:05 UTC