



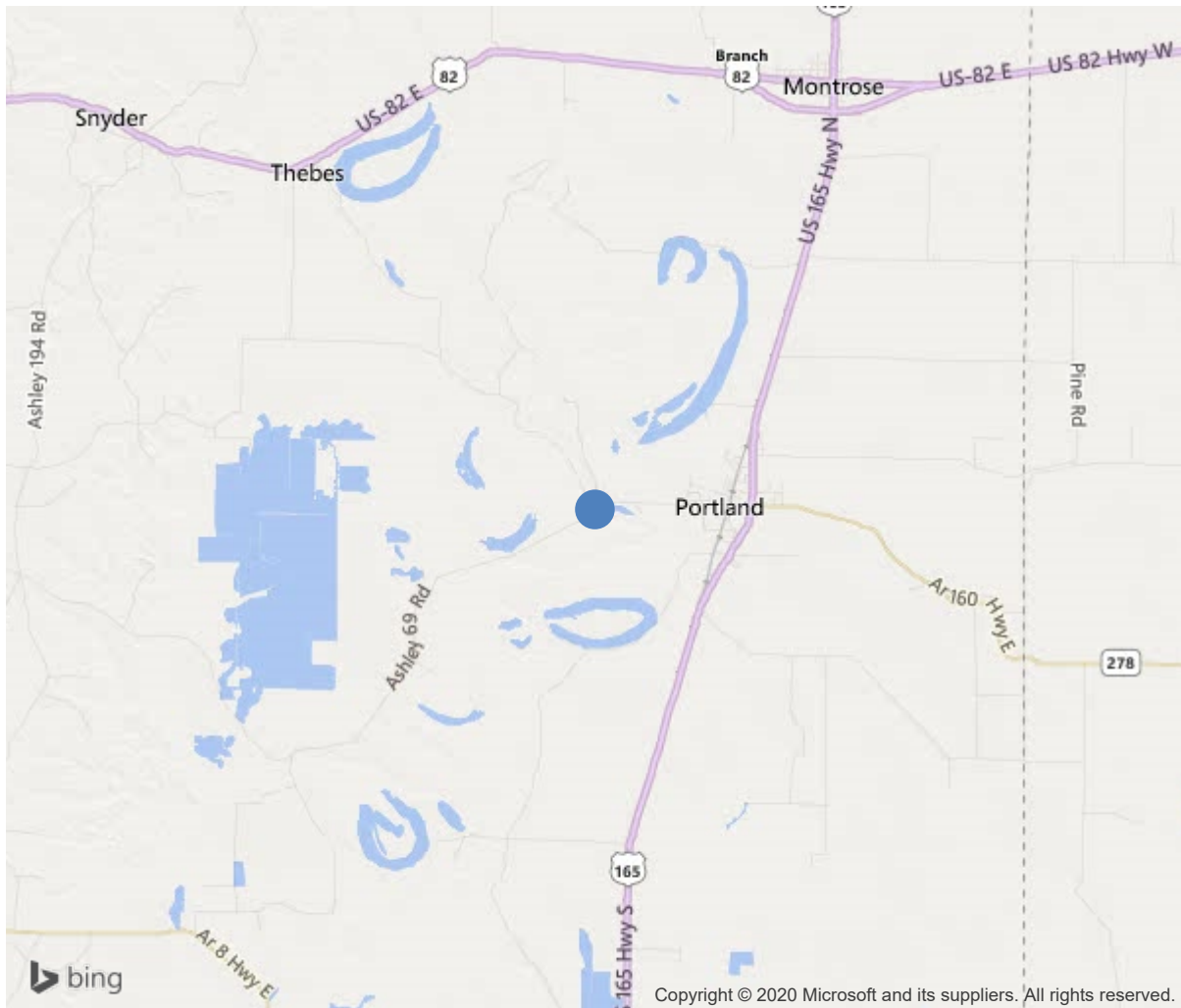
Bridge #05512(Routine)

SH 160-11 LM 5.75 over Bayou Bartholomew

Location: 1.5 Mi W US 165, Portland

Team Lead: Sharon Hooks **Inspection Date:** November 05, 2018

1.5 Mi W US 165, Portland



33.23563, -91.53523



Bridge #05512(Routine)

SH 160-11 LM 5.75 over Bayou Bartholomew

Location: 1.5 Mi W US 165, Portland

Team Lead: Sharon Hooks Inspection Date: November 05, 2018

IDENTIFICATION	
(1) State Names	Arkansas
(8) Structure Number	05512
(5) Inventory Route	160
(2) Highway Agency District	02
(3) County Code	3-Ashley County, Arkansas
(4) Place Code	0
(6) Features Intersected	Bayou Bartholomew
(7) Facility Carried	SH 160-11 LM 5.75
(9) Location	1.5 Mi W US 165, Portland
(11) Mile Point	5.75 mi
(12) Base Highway Network	No
(13) LRS Inventory Rte & Subrte	0000000000
(16) Latitude	33.2356303001649
(17) Longitude	-91.5352305008305
(98) Border Bridge State Code	
(99) Border Bridge Structure No.	
STRUCTURE TYPE AND MATERIAL	
(43) Main Structure Type	32
Material	3-Steel
Type	2-Stringer/Multi-beam or girder
(44) Approach Structure Type	00
Material	0-Other
Type	0-Other
(45) No. of Spans in Main Unit	8
(46) No. of Approach Spans	0
(107) Deck Structure Type	1-Concrete Cast-in-Place
(108) Wearing Surface/Protective System	
Type of Wearing Surface	1-Monolithic Concrete (concurrently placed
Type of Membrane	0-None
Type of Deck Protection	0-None
AGE AND SERVICE	
(27) Year Built	1975
(106) Year Reconstructed	0
(42) Type of Service	15
On	1-Highway
Under	5-Waterway
(28) Lane	
On	2
Under	0
(29) Average Daily Traffic	400
(30) Year of ADT	2014
(109) Truck ADT	1 %
(19) Bypass, Detour Length	12 mi
GEOMETRIC DATA	
(48) Length of Maximum Span	57 ft
(49) Structure Length	458 ft
(50) Curb or Sidewalk Width	
Left	0 ft
Right	0 ft
(51) Bridge Roadway Width Curb to Curb	25.9 ft
(52) Deck Width Out to Out	28.6 ft
(32) Approach Roadway Width (W/Shoulders)	27.9 ft
(33) Bridge Median	0-No median
(34) Skew	0 Deg
(35) Structure Flared	No flare
(10) Inventory Route Min Vert Clear	99.99 ft
(47) Inventory Route Total Horiz Clear	27.2 ft
(53) Min Vert Clear Over Bridge Rdwy	99.99 ft
(54) Min Vert Underclear	0 ft
Ref:	
(55) Min Lat Underclear RT	99.9 ft
Ref:	
(56) Min Lat Underclear LT	0 ft
NAVIGATION DATA	
(38) Navigation Control	0-No navigation control on water
(111) Pier Protection	5-None present but re-evaluation
(39) Navigation Vertical Clearance	0 ft
(116) Vert-Lift Bridge Nav Min Vert Clear	0 ft
(40) Navigation Horizontal Clearance	0 ft

CLASSIFICATION			
(112) NBIS Bridge Length			Y
(104) Highway System			0
(26) Functional Class		7-Rural Major Collector	
(100) Defense Highway		0-The inventory route is not a S	
(101) Parallel Structure		N-No parallel structure exists.	
(102) Direction of Traffic		2 - way traffic	
(103) Temporary Structure			
(105) Federal Lands Highways		0-N/A	
(110) Designated National Network		0-The inventory route is not part of	
(20) Toll		3-On free road. The structure is toll-	
(21) Maintain		1-State Highway Agency	
(22) Owner		1-State Highway Agency	
(37) Historical Significance		5-Bridge is not eligible for the NRHP	
CONDITION			
(58) Deck			7
(59) Superstructure			7
(60) Substructure			7
(61) Channel & Channel Protection			7
(62) Culverts			N
LOAD RATING AND POSTING			
(31) Design Load		4-M 18 / H 20	
(63) Operating Rating Method			1
(64) Operating Rating			
Type		1-Load Factor(LF)	
Rating			60
(65) Inventory Rating Method		1-Load Factor(LF)	
(66) Inventory Rating			
Type			8
Rating			36
(70) Bridge Posting		5-Equal to or above legal loads	
(41) Structure Open/Posted/Closed		A-Open, no restriction	
APPRAISAL			
(67) Structural Evaluation			7
(68) Deck Geometry			5
(69) Clearances, Vertical/Horizontal			N
(71) Waterway Adequacy			8
(72) Approach Roadway Alignment			7
(36) Traffic Safety Features			1001
A) Bridge Railings		1-Inspected feature meets currently a	
B) Transitions		0-Inspected feature does not meet cur	
C) Approach Guardrail		0-Inspected feature does not meet cur	
D) Approach Guardrail Ends		1-Inspected feature meets currently a	
(113) Scour Critical Bridges		5-Bridge foundations determined to be	
PROPOSED IMPROVEMENTS			
(75) Type of Work			
(76) Length of Structure Improvement			0 ft
(94) Bridge Improvement Cost			\$ 0
(95) Roadway Improvement Cost			\$ 0
(96) Total Project Cost			\$ 0
(97) Year of Improvement Cost Estimate			
(114) Future ADT			409
(115) Year of Future ADT			2028
INSPECTIONS			
(90) Inspection Date			
(91) Frequency			24 Months
(92) Critical Feature Inspection	Done	Freq. (Mon)	Date
A: Fracture Critical Detail	No	24	
B: Underwater Inspection	No	0	
C: Other Special Inspection	No	0	



Bridge #05512(Routine)

SH 160-11 LM 5.75 over Bayou Bartholomew

Location: 1.5 Mi W US 165, Portland

Team Lead: Sharon Hooks, Inspection Date: November 05, 2018

ELEM	DESCRIPTION	UNITS	TOTAL	CS1	CS2	CS3	CS4
12	Reinforced Concrete Deck	SF	13099	12969	130	0	0
1130	Cracking (RC and Other)	SF	130	0	130	0	0
(12)	Deck: 28.6' by 458' Some vary small unsealed transverse cracking.						
107	Steel Open Girder/Beam	LF	1824	1824	0	0	0
515	Steel Protective Coating	SF	11476	7957	3069	450	0
3410	Chalking (Steel Protective Coatings)	SF	2869	0	2869	0	0
3440	Effectiveness (Steel Protective Coatings)	SF	650	0	200	450	0
(107)	Girders: 4 each at 456' Some chalky paint on outer girders with some very light pitting in small areas to lower flanges.						
205	Reinforced Concrete Column	EA	6	6	0	0	0
(205)	Columns: 3 each at Bents 3-4.						
215	Reinforced Concrete Abutment	LF	72	72	0	0	0
(215)	36' each Bents 1 & 9 Light staining due to leaking joint seals.						
220	Reinforced Concrete Pile Cap/Footing	LF	56	56	0	0	0
(220)	Cap Footings: 28' each Bents 3-4.						
227	Reinforced Concrete Pile	EA	37	36	1	0	0
1080	Delamination/Spall/Patched Area	EA	1	0	1	0	0
(227)	Pile: 5 each Bents 2 & 5-8./ 6 each Bents 3-4 under cap footing. Bent 8 Pile 5 has a spall from cap down 2' that has been patched.						
234	Reinforced Concrete Pier Cap	LF	196	192	4	0	0
1090	Exposed Rebar	LF	4	0	4	0	0
(234)	28' each Bents 2-8. Small areas with minor spalls on surface of caps. Bent 2,4,6,7 & 8 with small amount of rebar exposed.						
302	Compression Joint Seal	LF	234	169	35	25	5

Team Lead: Sharon Hooks, **Inspection Date:** November 05, 2018

ELEM	DESCRIPTION	UNITS	TOTAL	CS1	CS2	CS3	CS4
2310	Leakage	LF	15	0	0	15	0
2320	Seal Adhesion	LF	45	0	35	10	0
2330	Seal Damage	LF	5	0	0	0	5
(302)							
Joint Seals: 26' each Bents 1-9. Joint seals all spans are torn leaking and have some small areas missing seal.							
311	Movable Bearing	EA	32	0	22	10	0
1000	Corrosion	EA	32	0	22	10	0
(311)							
Movable Bearings: 4 each spans 1-9 All bearing have some light surface rust. Some bearing have heavy pitting rust to sole plate							
313	Fixed Bearing	EA	32	0	27	5	0
1000	Corrosion	EA	32	0	27	5	0
(313)							
Fixed Bearings: each spans 1-9. All bearing have light surface rust. Some have heavy pitting rust with some flaking to sole plates.							
331	Reinforced Concrete Bridge Railing	LF	916	916	0	0	0
(331)							
Bridge Rail: 458' each side.							



Bridge #05512(Routine)

SH 160-11 LM 5.75 over Bayou Bartholomew

Location: 1.5 Mi W US 165, Portland

Team Lead: Sharon Hooks **Inspection Date:** November 05, 2018



Bridge #05512(Routine)

SH 160-11 LM 5.75 over Bayou Bartholomew

Location: 1.5 Mi W US 165, Portland

Team Lead: Sharon Hooks **Inspection Date:** November 05, 2018

Maintenance Needs



Bridge #05512(Routine)

SH 160-11 LM 5.75 over Bayou Bartholomew

Location: 1.5 Mi W US 165, Portland

Team Lead: Sharon Hooks **Inspection Date:** November 05, 2018

Inspection Comments

End of structure toward US 165, Portland. Beginning on west End.