



Latitude:33.69468, Longitude:-91.48367

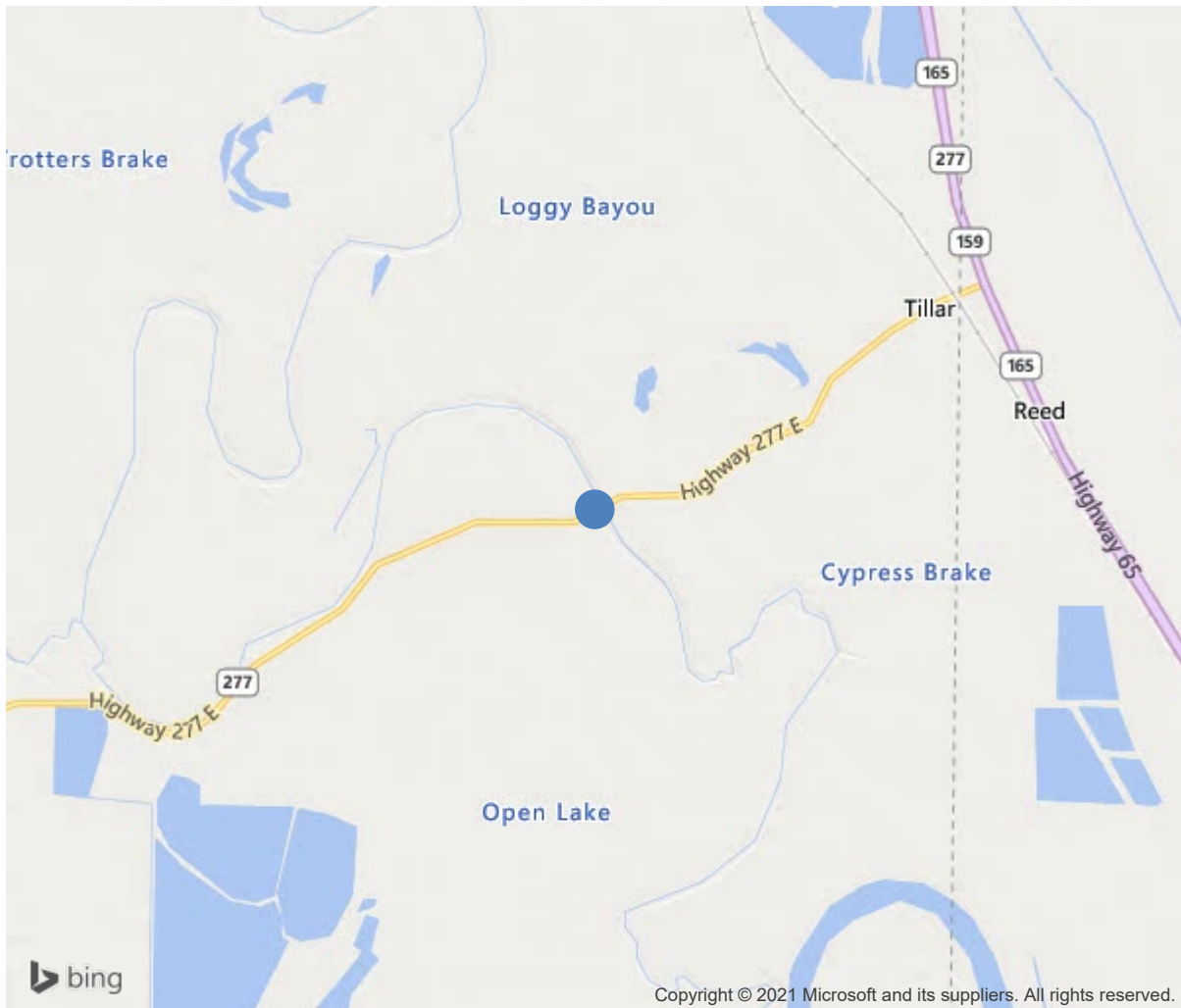
Route:277 Section:01 Log:4.33

Arnold Road ID:22x277x1xA, Arnold Log mile:4.307

District 02, Drew County

Owner: 1-State Highway Agency

2.2 Mi SW US 65-Tillar



33.69468, -91.48367



Bridge #03700(QA Routine)
SH 277-01 LM 4.33 over Bayou Bartholomew
Location: 2.2 Mi SW US 65-Tillar

Team Lead: Monty Frazier Inspection Date: July 20, 2020

IDENTIFICATION	
(1) State Names	Arkansas
(8) Structure Number	03700
(5) Inventory Route	
(2) Highway Agency District	
(3) County Code	43-
(4) Place Code	0
(6) Features Intersected	
(7) Facility Carried	
(9) Location	
(11) Mile Point	mi
(12) Base Highway Network	No
(13) LRS Inventory Rte & Subrte	
(16) Latitude	33.6946753009014
(17) Longitude	-91.4836659272511
(98) Border Bridge State Code	
(99) Border Bridge Structure No.	
STRUCTURE TYPE AND MATERIAL	
(43) Main Structure Type	
Material	
Type	
(44) Approach Structure Type	
Material	
Type	
(45) No. of Spans in Main Unit	
(46) No. of Approach Spans	
(107) Deck Structure Type	-
(108) Wearing Surface/Protective System	
Type of Wearing Surface	-
Type of Membrane	-
Type of Deck Protection	-
AGE AND SERVICE	
(27) Year Built	
(106) Year Reconstructed	
(42) Type of Service	
On	-
Under	
(28) Lane	
On	
Under	
(29) Average Daily Traffic	
(30) Year of ADT	
(109) Truck ADT	%
(19) Bypass, Detour Length	mi
GEOMETRIC DATA	
(48) Length of Maximum Span	ft
(49) Structure Length	317.2 ft
(50) Curb or Sidewalk Width	
Left	ft
Right	ft
(51) Bridge Roadway Width Curb to Curb	24 ft
(52) Deck Width Out to Out	28.5 ft
(32) Approach Roadway Width (W/Shoulders)	ft
(33) Bridge Median	-
(34) Skew	Deg
(35) Structure Flared	
(10) Inventory Route Min Vert Clear	ft
(47) Inventory Route Total Horiz Clear	ft
(53) Min Vert Clear Over Bridge Rdwy	ft
(54) Min Vert Underclear	ft
Ref:	
(55) Min Lat Underclear RT	ft
Ref:	
(56) Min Lat Underclear LT	ft
NAVIGATION DATA	
(38) Navigation Control	-
(111) Pier Protection	-
(39) Navigation Vertical Clearance	ft
(116) Vert-Lift Bridge Nav Min Vert Clear	ft
(40) Navigation Horizontal Clearance	ft

CLASSIFICATION			
(112) NBIS Bridge Length			
(104) Highway System			
(26) Functional Class		-	
(100) Defense Highway		-	
(101) Parallel Structure		-	
(102) Direction of Traffic			
(103) Temporary Structure			
(105) Federal Lands Highways		-	
(110) Designated National Network		-	
(20) Toll		-	
(21) Maintain		-	
(22) Owner		-	
(37) Historical Significance		-	
CONDITION			
(58) Deck			4
(59) Superstructure			5
(60) Substructure			5
(61) Channel & Channel Protection			
(62) Culverts			
LOAD RATING AND POSTING			
(31) Design Load			-
(63) Operating Rating Method			
(64) Operating Rating			
Type			-
Rating			
(65) Inventory Rating Method			-
(66) Inventory Rating			
Type			
Rating			
(70) Bridge Posting			
(41) Structure Open/Posted/Closed			-
APPRAISAL			
(67) Structural Evaluation			
(68) Deck Geometry			
(69) Clearances, Vertical/Horizontal			
(71) Waterway Adequacy			
(72) Approach Roadway Alignment			
(36) Traffic Safety Features			
A) Bridge Railings			-
B) Transitions			-
C) Approach Guardrail			-
D) Approach Guardrail Ends			-
(113) Scour Critical Bridges			-
PROPOSED IMPROVEMENTS			
(75) Type of Work			
(76) Length of Structure Improvement			ft
(94) Bridge Improvement Cost			\$
(95) Roadway Improvement Cost			\$
(96) Total Project Cost			\$
(97) Year of Improvement Cost Estimate			
(114) Future ADT			
(115) Year of Future ADT			
INSPECTIONS			
(90) Inspection Date			
(91) Frequency			24 Months
(92) Critical Feature Inspection	Done	Freq. (Mon)	Date
A: Fracture Critical Detail	No	24	
B: Underwater Inspection	No	0	
C: Other Special Inspection	Yes	24	202005



Bridge #03700(QA Routine)
SH 277-01 LM 4.33 over Bayou Bartholomew
Location: 2.2 Mi SW US 65-Tillar

Team Lead: Monty Frazier, **Inspection Date:** July 20, 2020

ELEM	DESCRIPTION	UNITS	TOTAL	CS1	CS2	CS3	CS4
12	Reinforced Concrete Deck	SF	7980	4734	632	2614	0
1080	Delamination/Spall/Patched Area	SF	740	0	632	108	0
1090	Exposed Rebar	SF	238	0	0	238	0
1120	Efflorescence/Rust Staining	SF	2268	0	0	2268	0
510	Wearing Surfaces	SF	7591	7431	0	160	0
3210	Delam/Spall/Patched Area/Pothole	SF	160	0	0	160	0
(12-1080)							
107	Steel Open Girder/Beam	LF	1575	0	945	630	0
1000	Corrosion	LF	1575	0	945	630	0
515	Steel Protective Coating	SF	8662	1733	0	6929	0
3440	Effectiveness (Steel Protective Coatings)	SF	6929	0	0	6929	0
205	Reinforced Concrete Column	EA	6	0	0	6	0
1090	Exposed Rebar	EA	5	0	0	5	0
1190	Abrasion/Wear (PSC/RC)	EA	1	0	0	1	0
210	Reinforced Concrete Pier Wall	LF	40	40	0	0	0
215	Reinforced Concrete Abutment	LF	71	71	0	0	0
227	Reinforced Concrete Pile	EA	16	14	0	2	0
1090	Exposed Rebar	EA	1	0	0	1	0
1130	Cracking (RC and Other)	EA	1	0	0	1	0
234	Reinforced Concrete Pier Cap	LF	182	124	0	58	0
1010	Cracking	LF	28	0	0	28	0
1080	Delamination/Spall/Patched Area	LF	30	0	0	30	0
305	Assembly Joint without Seal	LF	193	0	0	193	0
2350	Debris Impaction	LF	193	0	0	193	0
311	Movable Bearing	EA	35	0	0	35	0
1000	Corrosion	EA	35	0	0	35	0
313	Fixed Bearing	EA	35	0	0	35	0
1000	Corrosion	EA	35	0	0	35	0



Bridge #03700(QA Routine)
SH 277-01 LM 4.33 over Bayou Bartholomew
Location: 2.2 Mi SW US 65-Tillar

Team Lead: Monty Frazier, **Inspection Date:** July 20, 2020

ELEM	DESCRIPTION	UNITS	TOTAL	CS1	CS2	CS3	CS4
330	Metal Bridge Railing	LF	634	634	0	0	0
515	Steel Protective Coating	SF	1995	0	1995	0	0
3430	Oxide Film Degradation Color/Texture Adherence(Steel Protective Coatings)	SF	1995	0	1995	0	0



Span 2 girder 4 active Cs3 corrosion



Cap 1 has cs3 rebar spalls on the under face of cap.



Approach roadway



Span 1



Span 2 Wearing surface has reflective cracking throughout and appears to have a lot of patched areas under asphalt. There is efflorescence cracking throughout under surface.



Span 3



Bent 3 assembly joint typical



Bent 3 assembly joint typical



Span 4



Span 5



Typical bridge railing



Span 6 repaired deck patches



Span7 Cs3 spalling



Span 7 bay 1 large Cs3 rebar areas and delam. This is typical in all spans



Span 7 bay 1 large Cs3 rebar areas and delam. This is typical in all spans



Ends of girders have had rust removed and repainted



Cs3 rebar at bent 3 Column 3,2 bent 4 column 3,1;
Bent 3 column 1 is CS2 rebar



Cs3 cracking in cap 4 AHD side above column 2 this is typical at cap 3



Cs3 cracking at bent 6 left side.



Span 5 rebar and repaired full depth failures



Typical Cs3 rebar on edges of soffit scattered throughout



Span 5, 6 have three large repaired full depth failures



Span 6 right side soffit Cs3 rebar



Span 6 left side patched area with grout



Bent 6 pile 4. Cap 6 spalling Cs3



Span 7 cs3 efflorescence this is typical throughout under surface of the deck.



Span 7 bay 4 Cs3 rebar



Abutment 2



Abutment 2 bearing 4 pack rust Cs3 typical



Bridge #03700(QA Routine)

SH 277-01 LM 4.33 over Bayou Bartholomew

Location: 2.2 Mi SW US 65-Tillar

Team Lead: Monty Frazier **Inspection Date:** July 20, 2020

Maintenance Needs



Bridge #03700(QA Routine)

SH 277-01 LM 4.33 over Bayou Bartholomew

Location: 2.2 Mi SW US 65-Tillar

Team Lead: Monty Frazier **Inspection Date:** July 20, 2020