



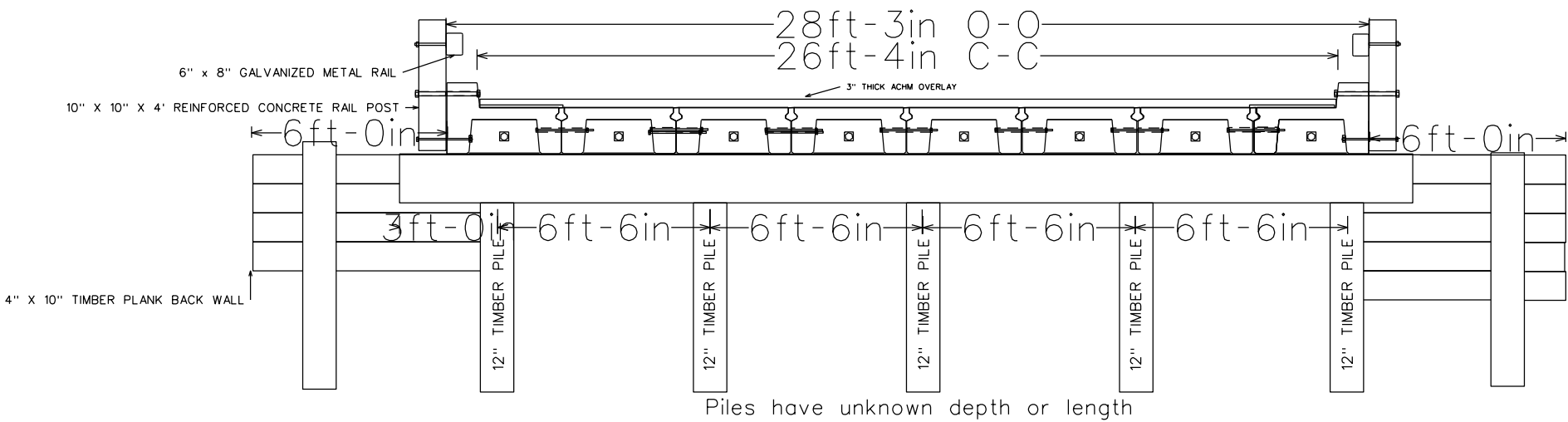
[illegible]

**AR DOT**  
BRIDGE OPERATIONS

[illegible]

ARKANSAS STATE HIGHWAY COMMISSION Little Rock, ARK.			BRIDGE NO. M3986		
	Scale: 1"=5'		Drawn By: dmf	Project: Inspector Sketch	
	Inspection Dir: N - S	Channel Flow: E - W	Checked By: Edit	Date: 7/18/2024	

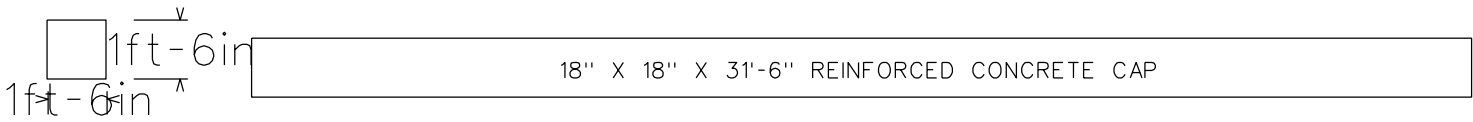
# 10' Scale



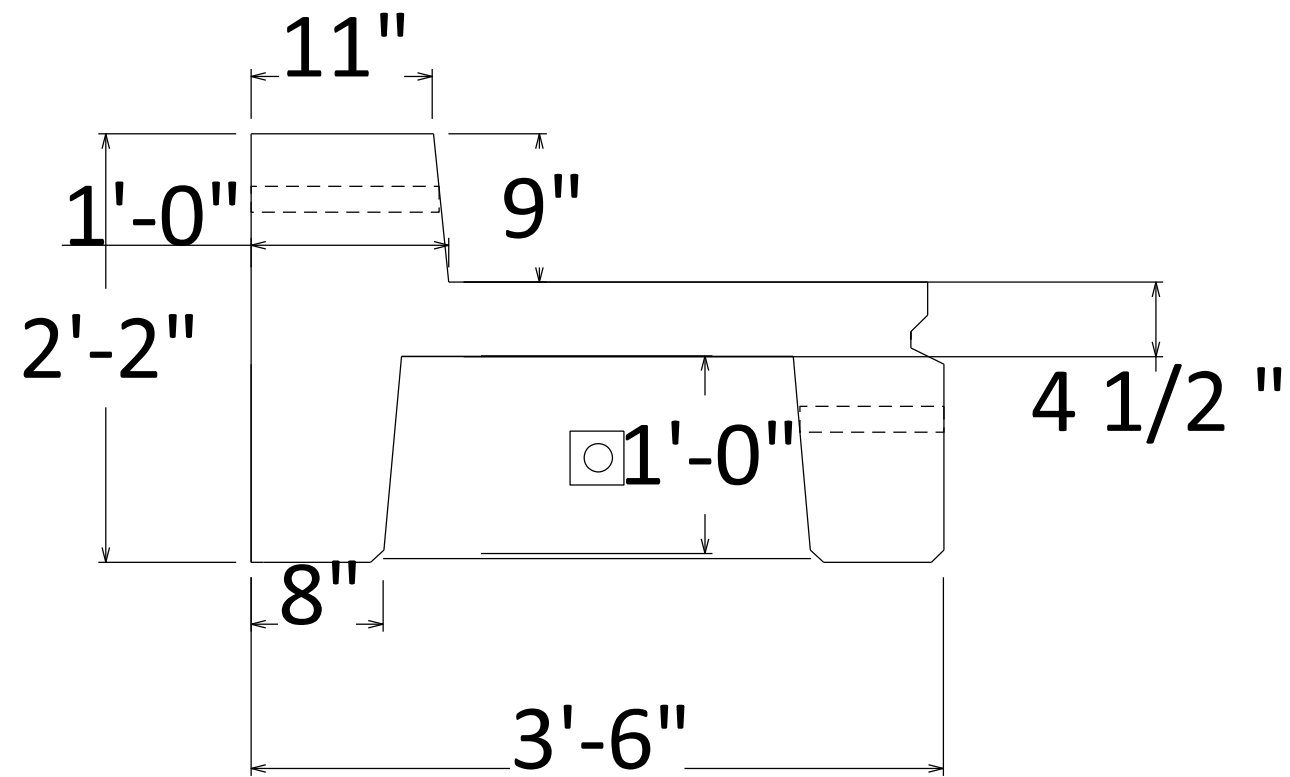
TYPICAL CROSS SECTION AND PILE SPACING  
BOTH ABUTMENTS

UNITS ARE BOLTED EACH END AND AT CENTER SPAN  
JOINTS ARE GROUTED

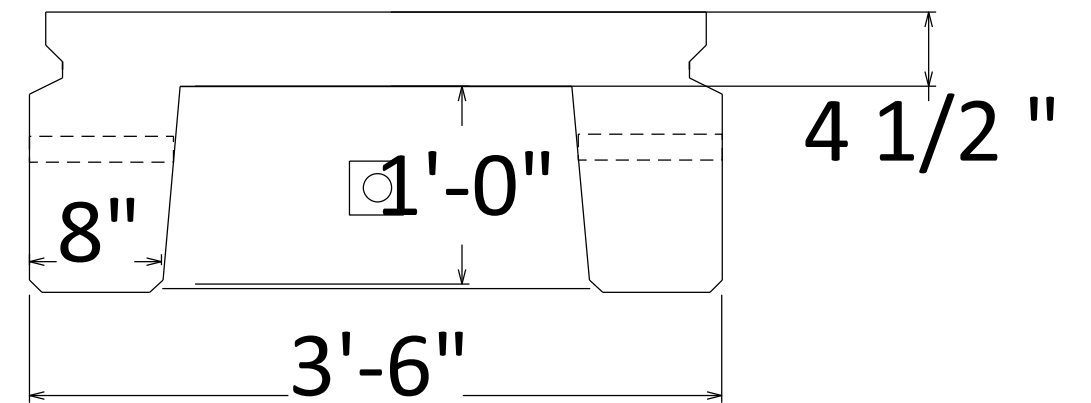
NOTE: SPAN 3 UNITS 1,2 ARE NOT BOLTED TOGETHER TRANSVERSELY



ARKANSAS STATE HIGHWAY COMMISSION Little Rock, ARK.			BRIDGE NO. M3986		
	Scale: 1"=5'		Drawn By: dmf	Project: Inspector Sketch	
	Inspection Dir: N - S	Channel Flow: E - W	Checked By: Edit	Date: 7/18/2024	

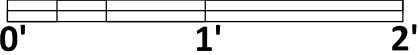



CURB UNIT CROSS SECTION



INTERIOR UNIT CROSS SECTION

CHANNEL BEAM UNIT CROSS SECTION

<b>ARKANSAS STATE HIGHWAY COMMISSION</b> <b>Little Rock, ARK.</b>			<b>BRIDGE NO.</b> <b>M3986</b>		
	<b>Scale: 1"=1'</b>		<b>Drawn By:</b> DMF	<b>Project:</b> Inspector Sketch	
	<b>Inspection Dir:</b> N - S	<b>Channel Flow:</b> E - W	<b>Checked By:</b> Edit	<b>Date:</b> 7/18/2024	