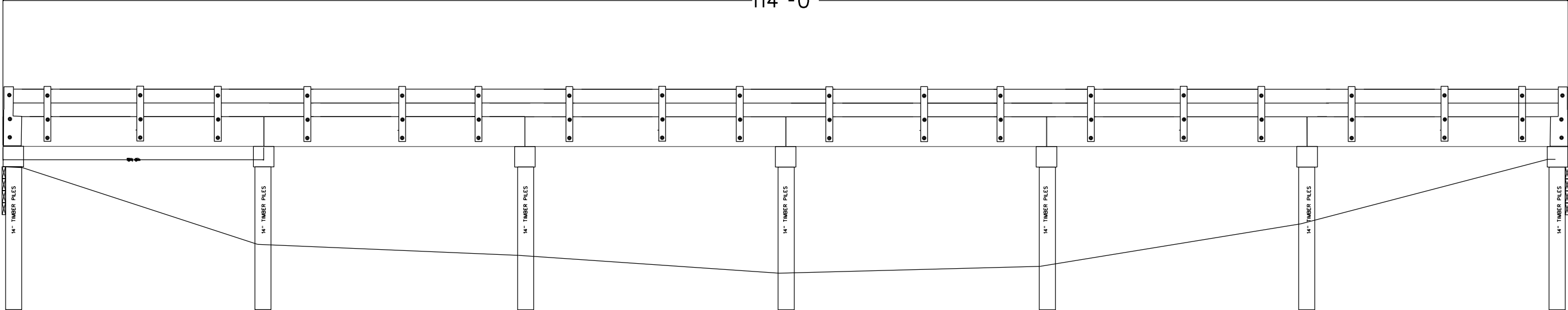


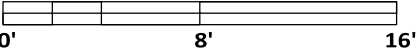

BRIDGE #M3330

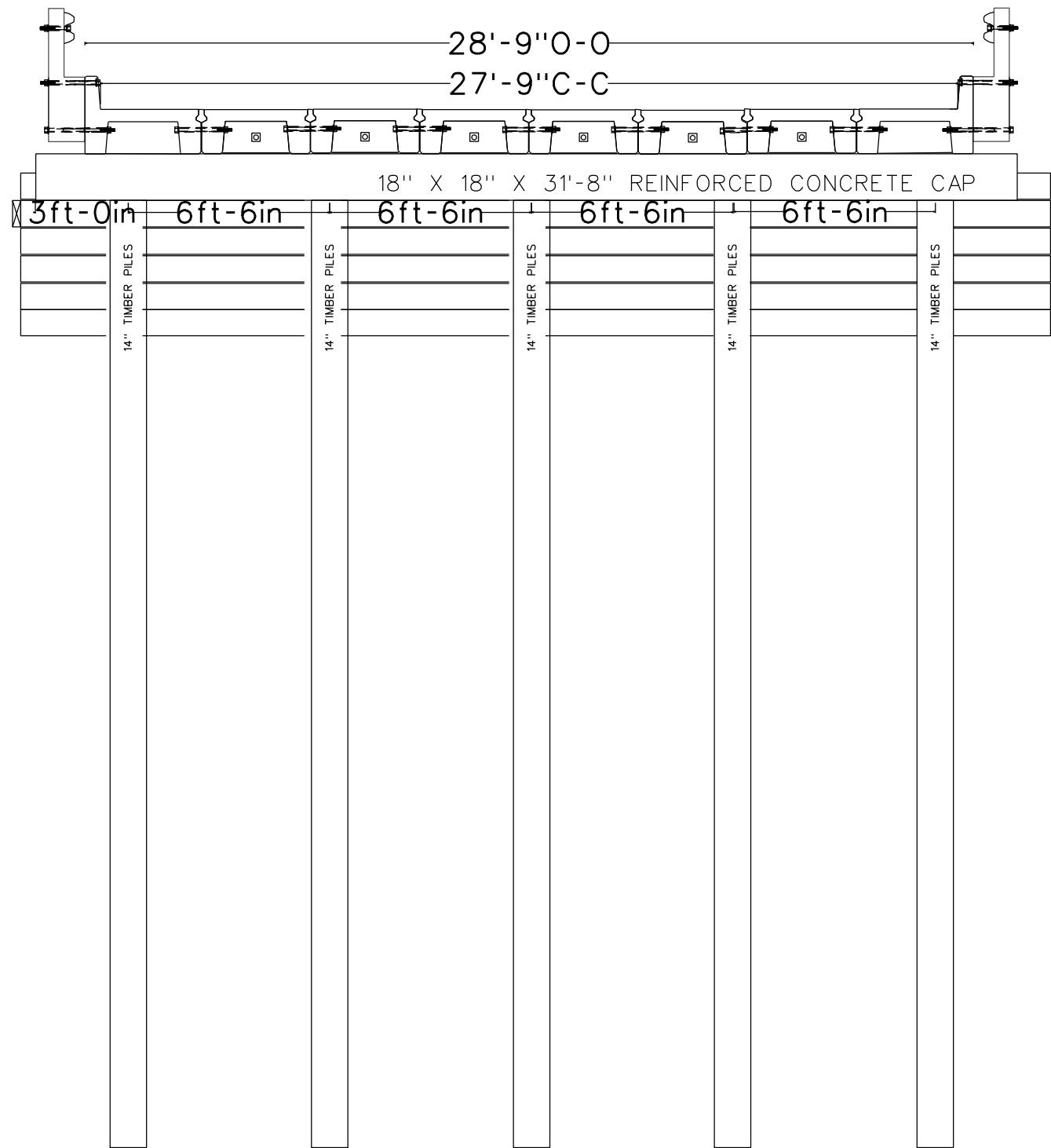
114'-0"



BENT 1 BENT 2 BENT 3 BENT 4 BENT 5 BENT 6 BENT 7

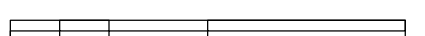

Pile length and depth unknown

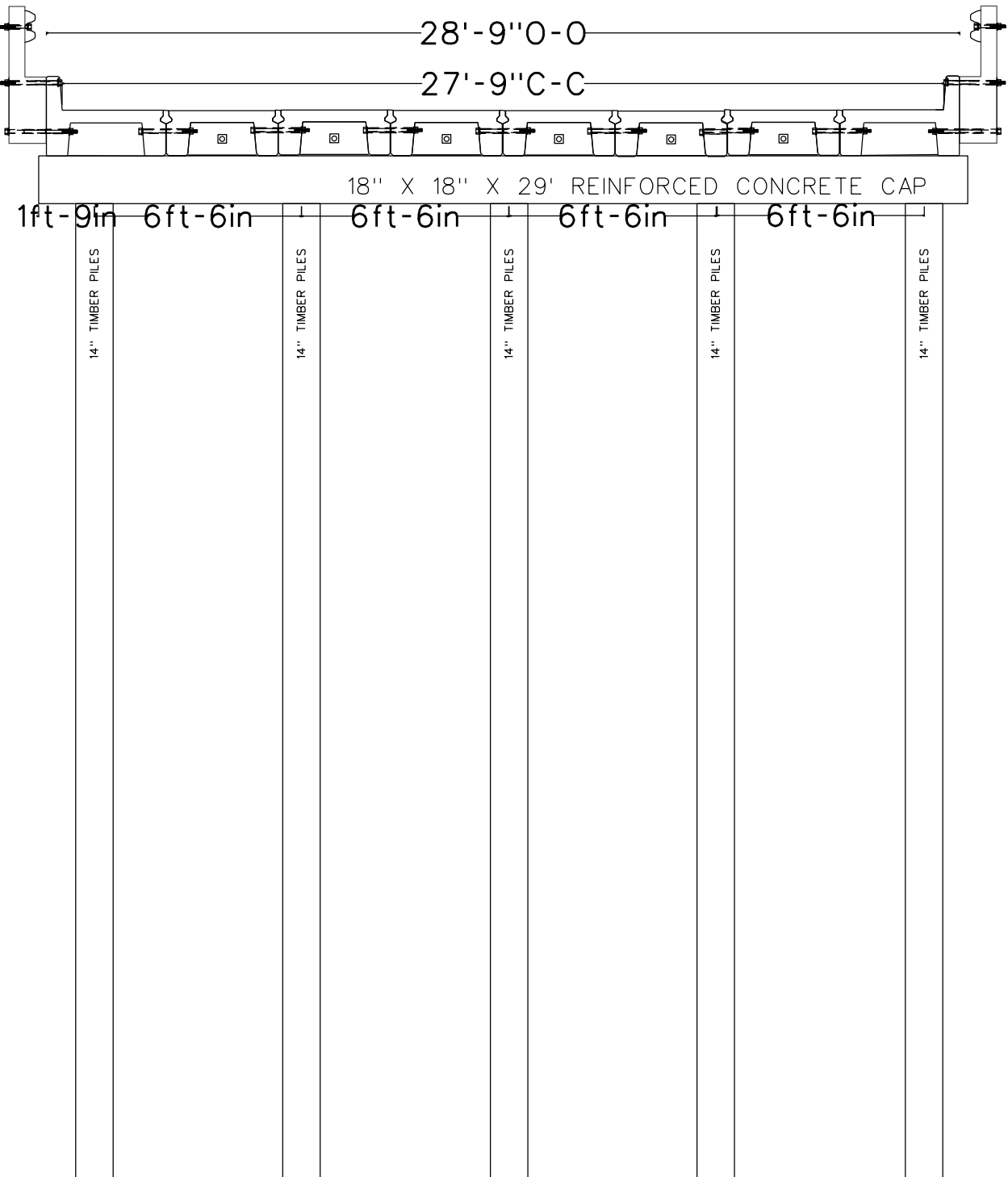
ARKANSAS STATE HIGHWAY COMMISSION Little Rock, ARK.			BRIDGE NO. M3330		
	Scale: 1"=8'		Drawn By: CWS	Project:Inspector Sketch	
	Inspection Dir: W to E	Channel Flow: Edit	Checked By: Edit	Date: 9/12/2024	



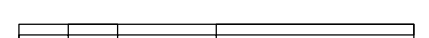

TYPICAL BENTS #1,7
Pile length and depth unknown
TYPICAL CROSS SECTION AND PILE SPACING
ABUTMENTS HAVE TIMBER BACKWALLS

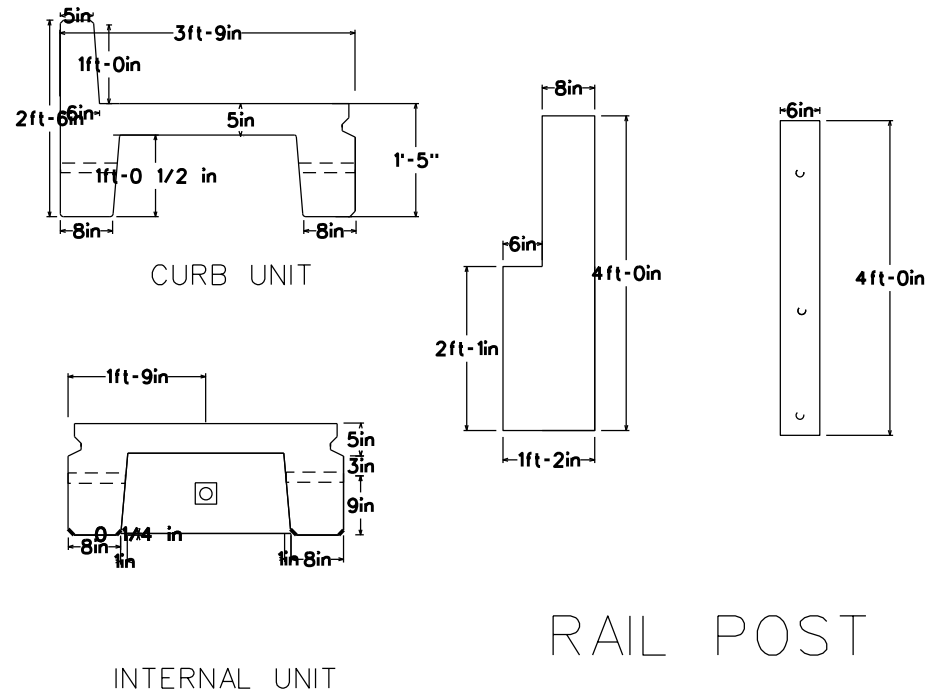
JOINTS ARE GROUTED AND UNITS ARE BOLTED TOGETHER AT ENDS

ARKANSAS STATE HIGHWAY COMMISSION Little Rock, ARK.			BRIDGE NO. M3330		
	Scale: 1"=5'		Drawn By: CWS	Project:Inspector Sketch	
	Inspection Dir: W to E	Channel Flow: Edit	Checked By: Edit	Date: 9/12/2024	



TYPICAL BENTS #2,3,4,5,6
Pile length and depth unknown
JOINTS ARE GROUTED AND UNITS ARE BOLTED TOGETHER AT ENDS

ARKANSAS STATE HIGHWAY COMMISSION Little Rock, ARK.			BRIDGE NO. M3330		
	Scale: 1"=5'		Drawn By: CWS	Project:Inspector Sketch	
	Inspection Dir: W to E	Channel Flow: Edit	Checked By: Edit	Date: 9/12/2024	



ARKANSAS STATE HIGHWAY COMMISSION Little Rock, ARK.			BRIDGE NO. M3330		
	Scale 1"=2.5'		Drawn By: CWS	Project: Inspector Sketch	
	Inspection Dir: W to E	Channel Flow: Edit	Checked By: Edit	Date: 9/12/2024	