

DATE REVISED	DATE FILMED	DATE REVISED	DATE FILMED	FED. ROAD DIST. NO.	STATE	FED. AID PROJ. NO.	SHEET NO.	TOTAL SHEETS
				6	ARK.			
				JOB NO.		110122	36	57

① 6293. BENT DTL'S. 29672

BAR LIST-EACH BENT **

MARK	NO. REQ'D	LENGTH	A	B	PIN DIA.	BENDING DIAGRAMS
B401	42	9'-11"	2'-3 1/2"	2'-2"	2"	
B402	15	6'-6"	2'-3 1/2"	2'-2"	2"	
B403	2	37'-8"			str.	
B404	8	38'-10"			str.	
B405	33	3'-4 1/2"			str.	
B406	33	3'-11"	1'-2"	1'-7"	2"	
B407	6	h(-) 1'-1"			str.	
B501	33	3'-4 1/2"			str.	
B601	6	39'-0"	37'-8"	6"	4 1/2"	
B602	6	37'-8"			str.	
B603	8	3'-4 1/2"			str.	
B604	"c"	8'-0"	6'-0"	1'-0"	4 1/2"	

Dimensions are out to out of Bars.

**For "Bar List" and "Bending Diagrams" for Wing and Rail, See Dwg. No. 29673

TABLE OF VARIABLES

BENT NO.	ELEV. "A"	ELEV. "B"	"a"	"b"	"c"	"h"
1	189.00	185.34	3'-4 1/2"	0'-3 3/8"	12	5'-6"
2	189.00	185.34	3'-4 1/2"	0'-3 3/8"	12	5'-6"

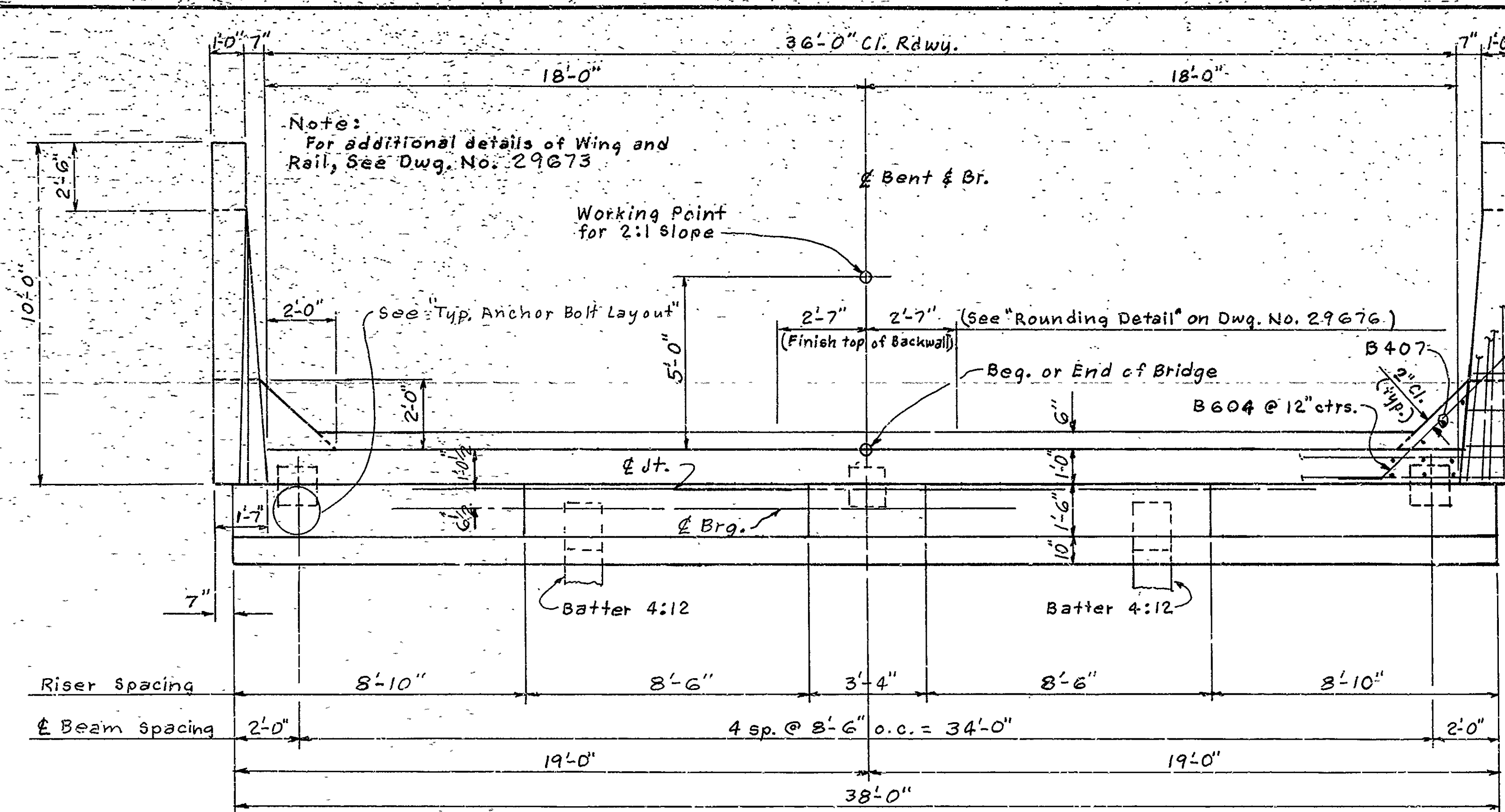
Tabular Data by LDF Date 12-8-88
Checked By: JAS Date 2-26-88

GENERAL NOTES

- ALL CONCRETE SHALL BE CLASS "B" AND BE POURED IN THE DRY. ALL EXPOSED CORNERS TO BE CHAMFERED 3/4" UNLESS OTHERWISE NOTED.
- ALL REINFORCING STEEL SHALL CONFORM TO ASTM A615 OR A617, GRADE 60 (YIELD STRENGTH = 60,000 psi).
- BACKWALL SHALL NOT BE POURED BEFORE BEAMS ARE IN PLACE.
- STRUCTURAL STEEL IN END BENTS SHALL BE ASTM A588 AND SHALL BE PAID FOR AS "STRUCTURAL STEEL IN BEAM SPANS (A588)".
- IF ANCHOR BOLTS ARE DRILLED INTO CAP, TOP REINFORCING BARS SHALL BE PROPERLY PLACED TO AVOID DAMAGE.
- FOR ADDITIONAL INFORMATION, SEE LAYOUT.

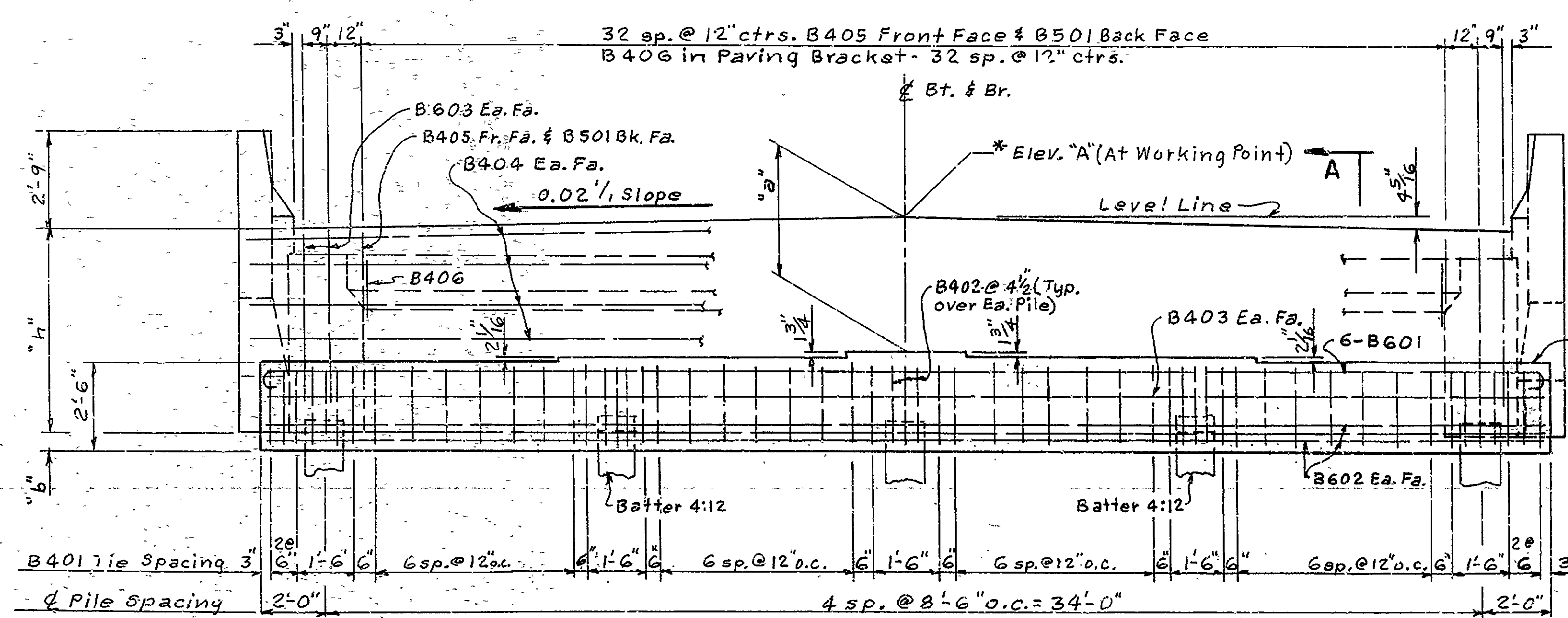
ALTERNATE NO. 2
DETAILS OF END BENTS
BRIDGE OVER CACHE RIVER

WOODRUFF COUNTY
ROUTE 38 SEC. 2
ARKANSAS STATE HIGHWAY COMMISSION
LITTLE ROCK, ARK.
DRAWN BY: LDF DATE: 1-5-88
CHECKED BY: JAS DATE: 2-26-88 SCALE: As Shown
DESIGNED BY: CSL DATE: July 87
BRIDGE NO. 6293 DRAWING NO. 29672

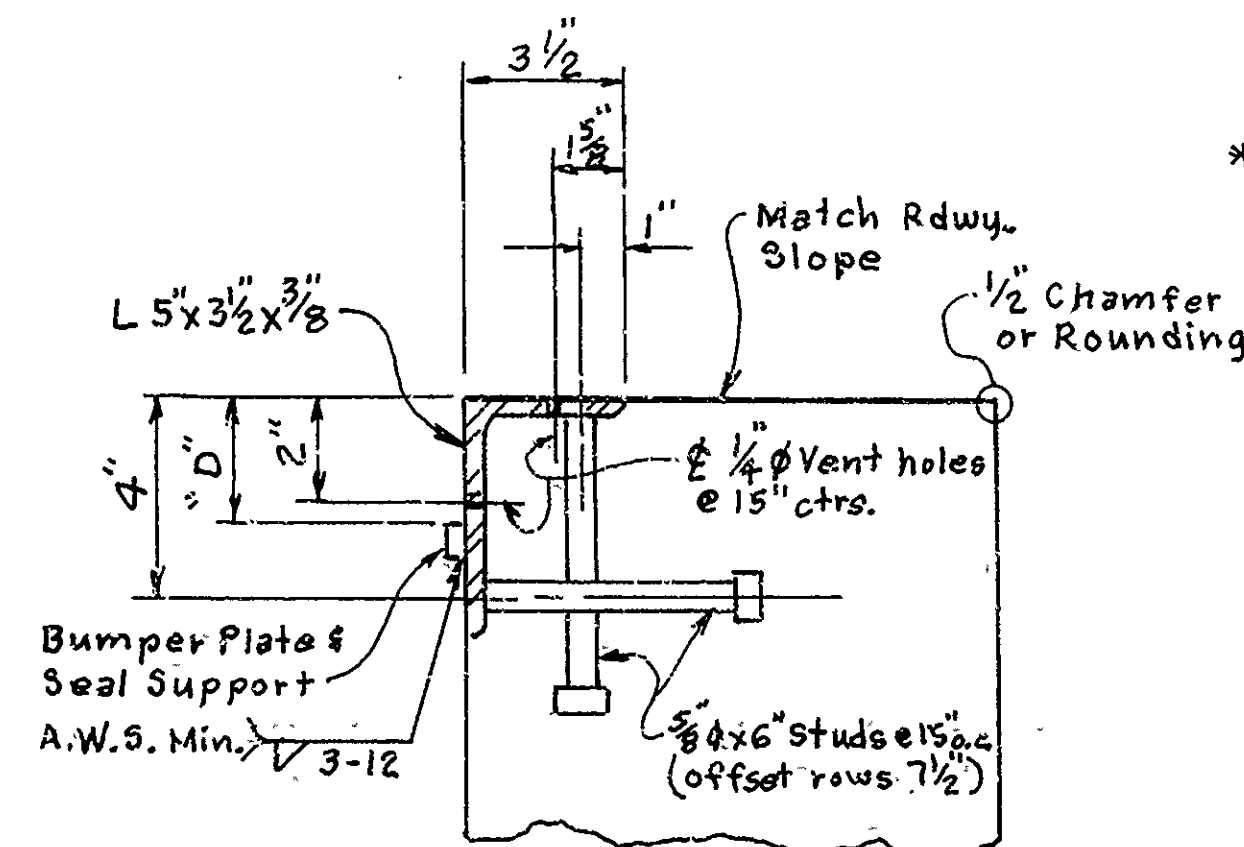


PLAN-END BENT
Scale: 3/8" = 1'-0"

* See "Rounding Detail" on Dwg. No. 29676

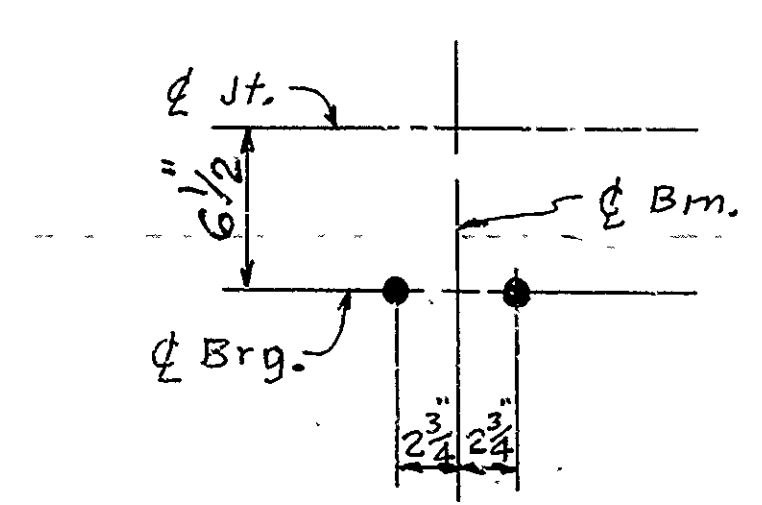


ELEVATION-END BENT
Scale: 3/8" = 1'-0"



DETAIL "X"
No Scale

Note: See Std. Dwg. 14990H for dimension "D" and Bumper Plate size.



TYP. ANCHOR BOLT LAYOUT
Scale: 1/2" = 1'-0"