



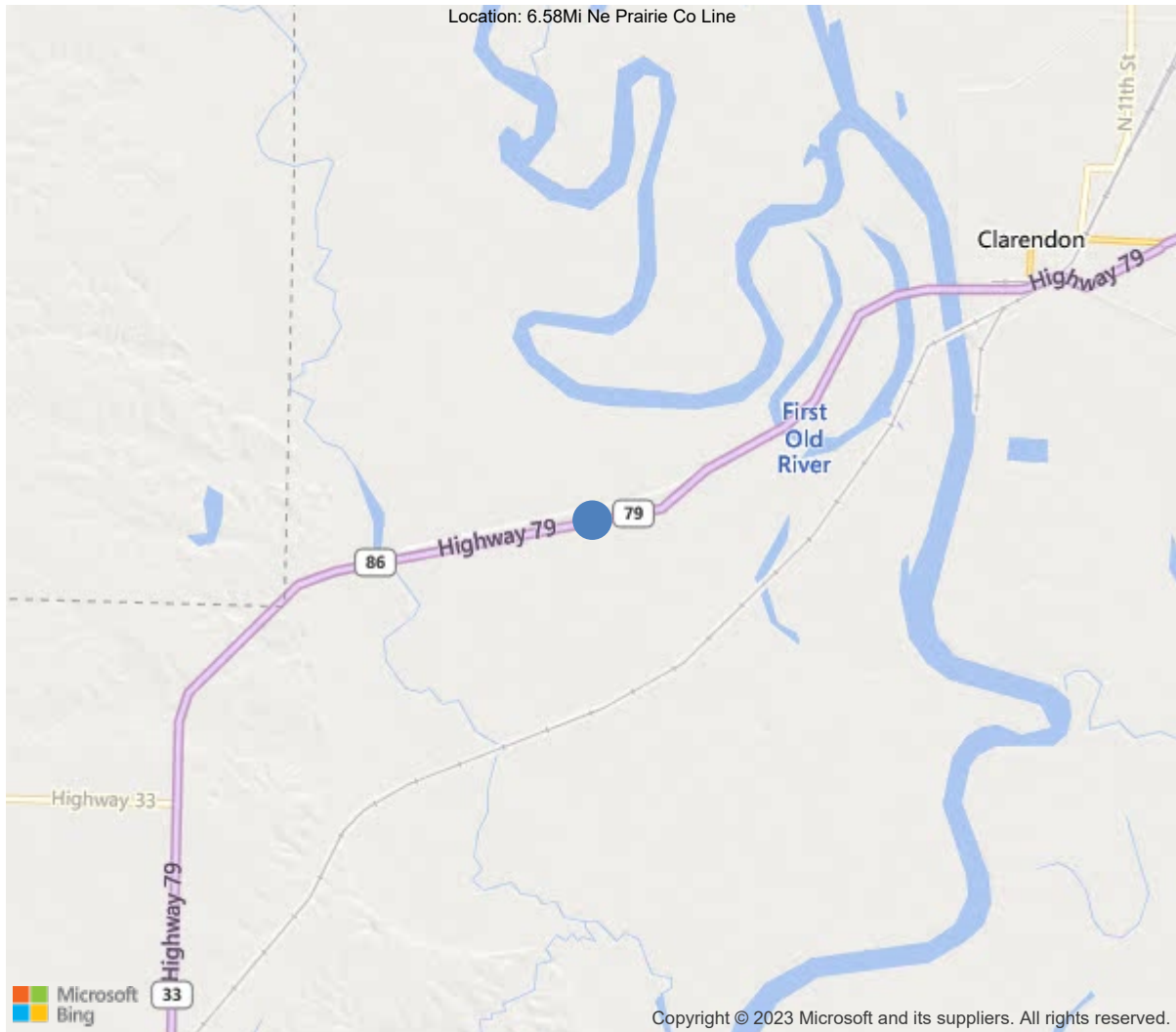
Latitude:34.67203, Longitude:-91.34757

Route:79 Section:13 Log:6.58

Arnold Road ID:48x79x13xA, Arnold Log mile:6.579

District 01, 95 - Monroe County

Owner: 1 - State Highway Agency



34.67203, -91.34757





**Asset #07027** (Routine, Underwater type 2)

**Us-79/Sec-13/L6.58 over White River Relief**

**Location: 6.58Mi Ne Prairie Co Line**

**Team Lead: Drew Melton, Inspection Date: 09/12/2022**

IDENTIFICATION	
(1) State Names	5 - Arkansas
(8) Structure Number	07027
(5) Inventory Route	1
(2) Highway Agency District	01 - District 01
(3) County Code	95 - Monroe County
(4) Place Code	13990
(6) Features Intersected	White River Relief
(7) Facility Carried	Us-79/Sec-13/L6.58
(9) Location	6.58Mi Ne Prairie Co Line
(11) Mile Point	6.58 mi
(12) Base Highway Network	No
(13) LRS Inventory Rte & Subrte	0000000000
(16) Latitude	34.672031
(17) Longitude	-91.347572
(98) Border Bridge State Code	
(99) Border Bridge Structure No.	
STRUCTURE TYPE AND MATERIAL	
(43) Main Structure Type	62
Material	6 - Prestressed concrete continuous *
Type	2 - Stringer/Multi-beam or girder
(44) Approach Structure Type	00
Material	0 - Other
Type	0 - Other
(45) No. of Spans in Main Unit	20
(46) No. of Approach Spans	0
(107) Deck Structure Type	1 - Concrete Cast-in-Place
(108) Wearing Surface/Protective System	
Type of Wearing Surface	1 - Monolithic Concrete (concurrently pl
Type of Membrane	0 - None
Type of Deck Protection	1 - Epoxy Coated Reinforcing
AGE AND SERVICE	
(27) Year Built	2012
(106) Year Reconstructed	0
(42) Type of Service	15
On	1 - Highway
Under	5 - Waterway
(28) Lane	
On	2
Under	0
(29) Average Daily Traffic	3400
(30) Year of ADT	2019
(109) Truck ADT	21 %
(19) Bypass, Detour Length	41 mi
GEOMETRIC DATA	
(48) Length of Maximum Span	77 ft
(49) Structure Length	1542 ft
(50) Curb or Sidewalk Width	
Left	0 ft
Right	0 ft
(51) Bridge Roadway Width Curb to Curb	40 ft
(52) Deck Width Out to Out	43.2 ft
(32) Approach Roadway Width (W/Shoulders)	40 ft
(33) Bridge Median	0 - No median
(34) Skew	0 Deg
(35) Structure Flared	0 - No flare
(10) Inventory Route Min Vert Clear	99.99 ft
(47) Inventory Route Total Horiz Clear	40 ft
(53) Min Vert Clear Over Bridge Rdwy	99.9 ft
(54) Min Vert Underclear	0 ft
Ref:	
(55) Min Lat Underclear RT	0 ft
Ref:	
(56) Min Lat Underclear LT	0 ft
NAVIGATION DATA	
(38) Navigation Control	0 - No navigation control on w
(111) Pier Protection	1 - Navigation protection not
(39) Navigation Vertical Clearance	0 ft
(116) Vert-Lift Bridge Nav Min Vert Clear	0 ft
(40) Navigation Horizontal Clearance	0 ft

CLASSIFICATION	
(112) NBIS Bridge Length	Y
(104) Highway System	1
(26) Functional Class	2 - Rural Principal Arterial -
(100) Defense Highway	0 - The inventory route is not
(101) Parallel Structure	N - No parallel structure exis
(102) Direction of Traffic	2 - way traffic
(103) Temporary Structure	
(105) Federal Lands Highways	0 - N/A
(110) Designated National Network	1 - The inventory route is par
(20) Toll	3 - On free road. The structu
(21) Maintain	1 - State Highway Agency
(22) Owner	1 - State Highway Agency
(37) Historical Significance	4 - Historical significance is
CONDITION	
(58) Deck	6
(59) Superstructure	8
(60) Substructure	7
(61) Channel & Channel Protection	5
(62) Culverts	N
LOAD RATING AND POSTING	
(31) Design Load	5 - MS 18 / HS 20
(63) Operating Rating Method	1
(64) Operating Rating	
Type	1 - Load Factor(LF)
Rating	51
(65) Inventory Rating Method	1 - Load Factor(LF)
(66) Inventory Rating	
Type	
Rating	30
(70) Bridge Posting	5 - Equal to or above legal loads
(41) Structure Open/Posted/Closed	A - Open, no restriction
APPRAISAL	
(67) Structural Evaluation	6
(68) Deck Geometry	6
(69) Clearances, Vertical/Horizontal	N
(71) Waterway Adequacy	9
(72) Approach Roadway Alignment	8
(36A) Bridge Railings	1 - Inspected feature meets current
(36B) Transitions	1 - Inspected feature meets current
(36C) Approach Guardrail	1 - Inspected feature meets current
(36D) Approach Guardrail Ends	1 - Inspected feature meets current
(113) Scour Critical Bridges	5 - Bridge foundations determined t
PROPOSED IMPROVEMENTS	
(75) Type of Work	
(76) Length of Structure Improvement	0 ft
(94) Bridge Improvement Cost	\$ 0
(95) Roadway Improvement Cost	\$ 0
(96) Total Project Cost	\$ 0
(97) Year of Improvement Cost Estimate	
(114) Future ADT	3600
(115) Year of Future ADT	2038

INSPECTIONS *			
(90) Inspection Date	09/12/2022		
(91) Frequency	24		
(92) Critical Feature Inspection	Done	Freq. (Mon)	Date
A: Fracture Critical Detail	No		
B: Underwater Inspection	No		
C: Other Special Inspection			
* The inspection date and frequency information in this box contains the current NBI date and frequency information. Please refer to the report header for the date this inspection was conducted.			



Asset **#07027**(Routine, Underwater type 2)

**District:** 01, **County:** 95 - Monroe County

**Team Lead:** Drew Melton, **Inspection Date:** 09/12/2022

---

**58 - Deck (6)**

9/9/2020-Lowered deck from 7 to 6 due to deck cracks spaced less than 5'.

---

**61 - Channel/Channel Protection (5)**

09-12-2022 lowered channel from 8 to 5 due to debris restrictions

Channel has vegetation on banks with restrictions from vegetation and trees in channel.

---

**A-46 - Asset Files**

-

---

**General Observation (False)**

Drawing numbers: 41887-88,41896.

Trees and vegetation are growing under and beside bridge and onto roadway.

---

ELEMENTS	DESCRIPTION	UNITS	TOTAL	CS1	CS2	CS3	CS4
12	Reinforced Concrete Deck	SF	66497	23030	43464	3	0
1080	Delamination/Spall/Patched Area	SF	3	0	0	3	0
1120	Efflorescence/Rust Staining	SF	4932	0	4932	0	0
1130	Cracking (RC and Other)	SF	30532	0	30532	0	0
1190	Abrasion/Wear (PSC/RC)	SF	8000	0	8000	0	0
(12) Spans have hairline and a few wider transverse cracks spaced two to three feet apart. Spans #13-16 has cracks spaced at 1' to 3'. Each span has one to two longitudinal hairline cracks. Several spans have light abrasion due to milling. Span #13 deck at bent #13 has three 1' shallow spalls. Soffit-under surface overhangs have open hairline cracks spaced three feet apart with light efflorescence.							
109	Prestressed Concrete Open Girder/Beam	LF	9240	9240	0	0	0
(109) Concrete diaphragms on inside girders except at expansion joints have delaminations and shallow spalls at most locations up to one foot no rebar.							
205	Reinforced Concrete Column	EA	38	38	0	0	0
215	Reinforced Concrete Abutment	LF	166	138	28	0	0
1120	Efflorescence/Rust Staining	LF	28	0	28	0	0
(215) Abutment back walls have vertical hairline cracks with a few with light efflorescence.							
234	Reinforced Concrete Pier Cap	LF	789	789	0	0	0
300	Strip Seal Expansion Joint	LF	258	1	257	0	0
2350	Debris Impaction	LF	257	0	257	0	0
(300) Joint adjacent header has surface rust full length with some pitted areas on ends. Joints have minor debris in them.							
310	Elastomeric Bearing	EA	240	240	0	0	0
321	Reinforced Concrete Approach Slab	SF	1752	1680	25	47	0
1130	Cracking (RC and Other)	SF	72	0	25	47	0
(321) Approach slabs have cracks mainly sealed a few open.							
331	Reinforced Concrete Bridge Railing	LF	3048	2828	220	0	0
1120	Efflorescence/Rust Staining	LF	220	0	220	0	0
(331) Rails have vertical cracks spaced three feet apart some with light efflorescence.							



Asset #07027(Routine, Underwater type 2)

Us-79/Sec-13/L6.58 over White River Relief

Location: 6.58Mi Ne Prairie Co Line

Team Lead: Drew Melton, Inspection Date: 09/12/2022

## Deck

ELEMENTS	DESCRIPTION	UNITS	TOTAL	CS1	CS2	CS3	CS4
12	Reinforced Concrete Deck	SF	66497	23030	43464	3	0
1080	Delamination/Spall/Patched Area	SF	3	0	0	3	0
1120	Efflorescence/Rust Staining	SF	4932	0	4932	0	0
1130	Cracking (RC and Other)	SF	30532	0	30532	0	0
1190	Abrasion/Wear (PSC/RC)	SF	8000	0	8000	0	0
<p>(12) Spans have hairline and a few wider transverse cracks spaced two to three feet apart. Spans #13-16 has cracks spaced at 1' to 3'. Each span has one to two longitudinal hairline cracks. Several spans have light abrasion due to milling. Span #13 deck at bent #13 has three 1' shallow spalls. Soffit-under surface overhangs have open hairline cracks spaced three feet apart with light efflorescence.</p>							

### 58 - Deck (6)

Comment: 9/9/2020-Lowered deck from 7 to 6 due to deck cracks spaced less than 5'.





Asset #07027(Routine, Underwater type 2)

Us-79/Sec-13/L6.58 over White River Relief

Location: 6.58Mi Ne Prairie Co Line

Team Lead: Drew Melton, Inspection Date: 09/12/2022

## Substructure

ELEMENTS	DESCRIPTION	UNITS	TOTAL				
				CS1	CS2	CS3	CS4
205	Reinforced Concrete Column	EA	38	38	0	0	0
215	Reinforced Concrete Abutment	LF	166	138	28	0	0
1120	Efflorescence/Rust Staining	LF	28	0	28	0	0
(215) Abutment back walls have vertical hairline cracks with a few with light efflorescence.							
234	Reinforced Concrete Pier Cap	LF	789	789	0	0	0

### 61 - Channel/Channel Protection (5)

Comment: 09-12-2022 lowered channel from 8 to 5 due to debris restrictions

Channel has vegetation on banks with restrictions from vegetation and trees in channel.





Asset #07027(Routine, Underwater type 2)

Us-79/Sec-13/L6.58 over White River Relief

Location: 6.58Mi Ne Prairie Co Line

Team Lead: Drew Melton, Inspection Date: 09/12/2022

Culvert

ELEMENTS	DESCRIPTION	UNITS	TOTAL	CS1	CS2	CS3	CS4
----------	-------------	-------	-------	-----	-----	-----	-----



Side view-elevation



**Asset #07027**(Routine, Underwater type 2)

**Us-79/Sec-13/L6.58 over White River Relief**

**Location: 6.58Mi Ne Prairie Co Line**

**Team Lead:** Drew Melton, **Inspection Date:** 09/12/2022

#### **Maintenance Needs**

**Date Reported:** 09/19/2018  
**Priority:** C - Important  
**Type of Work:** Repair (General)  
**Status:** Monitor  
**Component:** Element

---

#### **Deficiency Description**

Spans have hairline and a few wider transverse cracks spaced two to three feet apart.

#### **Remarks**

---



Typical longitudinal deck crack



Typical deck





Typical longitudinal deck crack.



Typical transverse deck crack.



**Date Reported:** 09/19/2018  
**Priority:** C - Important  
**Type of Work:** (Inactive) (Inactive) 1 - Clean  
**Status:** Monitor  
**Component:** Channel

---

**Deficiency Description**

Trees and vegetation are growing under and beside bridge and onto roadway.

**Remarks**

---



Typical vegetation

**Date Reported:** 09/10/2020  
**Priority:** C - Important  
**Type of Work:** Repair (General)  
**Status:** Forward State  
**Component:** Element

---

**Deficiency Description**

Span #13 deck at bent #13 has three 1' shallow spalls.

**Remarks**

---



Span #13 deck at bent #13 has three 1' shallow spalls.

**Date Reported:** 09/14/2022  
**Priority:** D- Routine  
**Type of Work:** Repair (General)  
**Status:** Open  
**Component:** Element

---

**Deficiency Description**

Approach slabs have cracks mainly sealed a few open.

**Remarks**

---



Abutment #1 approach slab



Abutment #2 approach slab



**Asset #07027**(Routine, Underwater type 2)

**Us-79/Sec-13/L6.58 over White River Relief**

**Location: 6.58Mi Ne Prairie Co Line**

**Team Lead:** Drew Melton, **Inspection Date:** 09/12/2022

## **Routine Maintenance**

Check Box Maintenance Items

<b>Data Field</b>	<b>Value</b>
A-54 - Sealable Deck Cracks	
A-55 - Deck Washing Needed	
A-56 - Joint Cleaning/Flushing Needed	
A-57-Beam End and Bearing Paint Needed	
A-58 - Cap Cleaning/Flushing Needed	
A-59 - Joint Repair Needed	
A-60 - Full Beam Painting Needed	
A-61 - Polymer Overlay Advised	
A-62 - Hydo and LMC Advised	



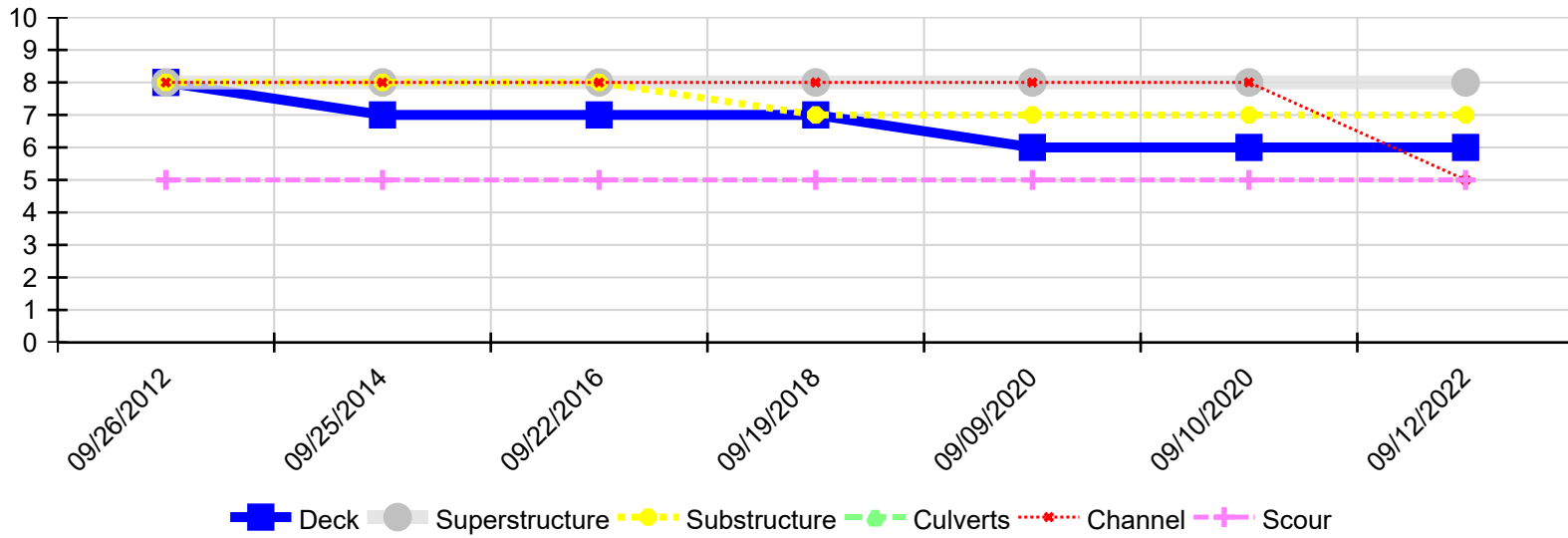
Asset #07027 (Routine, Underwater type 2)

Us-79/Sec-13/L6.58 over White River Relief

Location: 6.58Mi Ne Prairie Co Line

Team Lead: Drew Melton, Inspection Date: 09/12/2022

Condition History



Inspection Date	Deck	Superstructure	Substructure	Culverts	Channel	Scour
09/12/2022	6	8	7	N	5	5
09/10/2020	6	8	7	N	8	5
09/09/2020	6	8	7	N	8	5
09/19/2018	7	8	7	N	8	5
09/22/2016	7	8	8	N	8	5
09/25/2014	7	8	8	N	8	5
09/26/2012	8	8	8	N	8	5



Measurements Taken Top Of Roll

