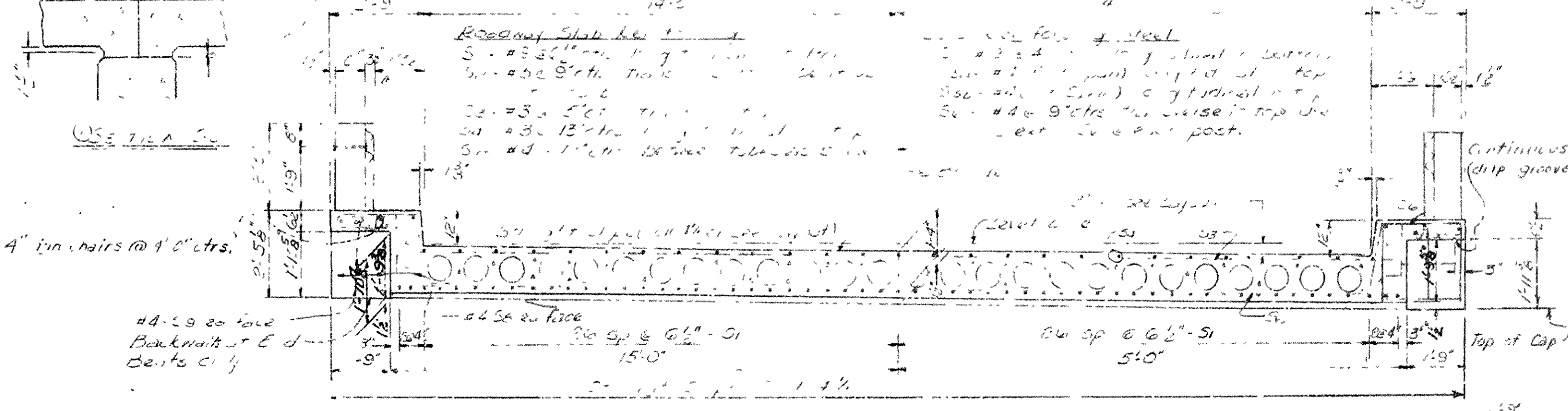
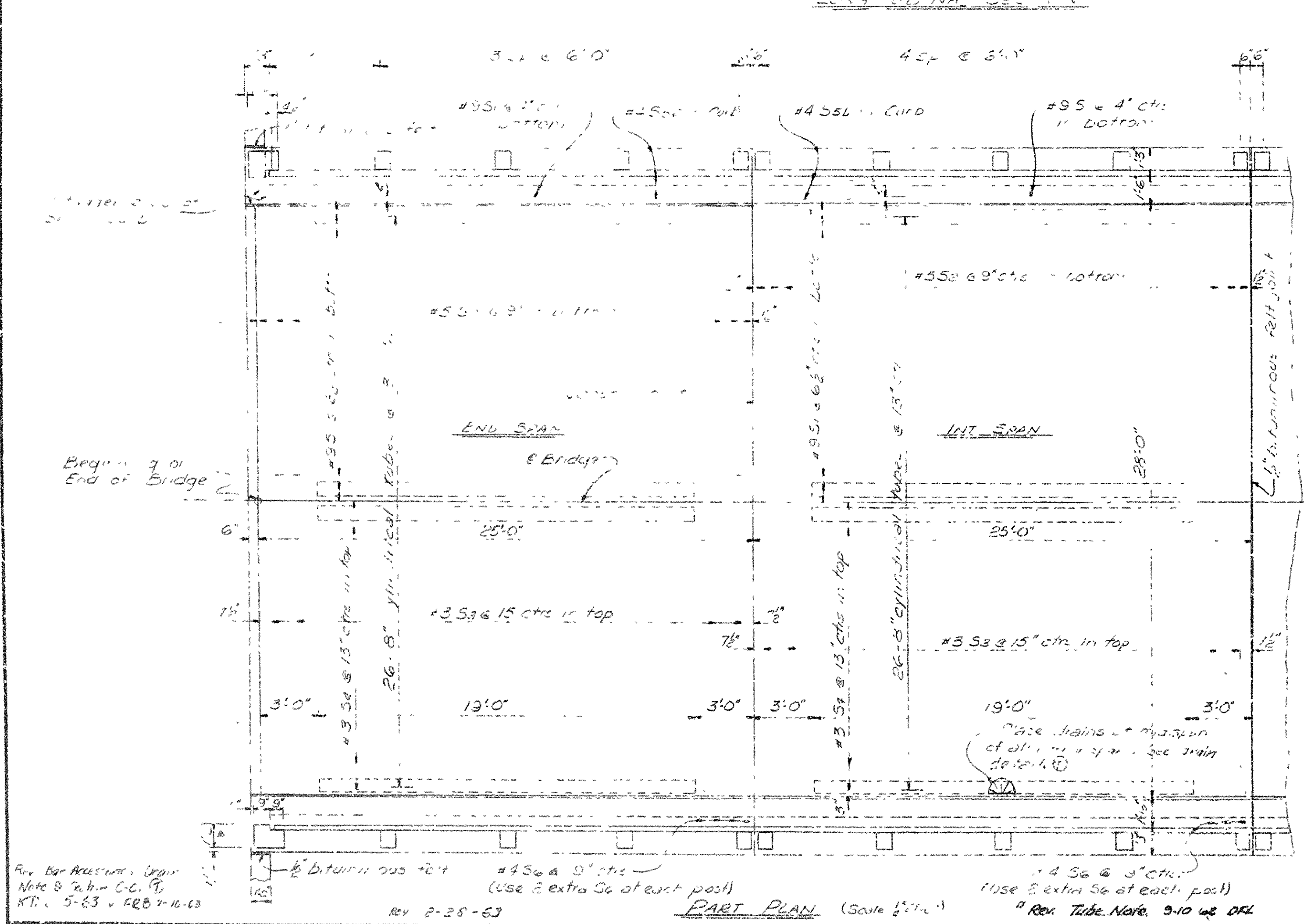
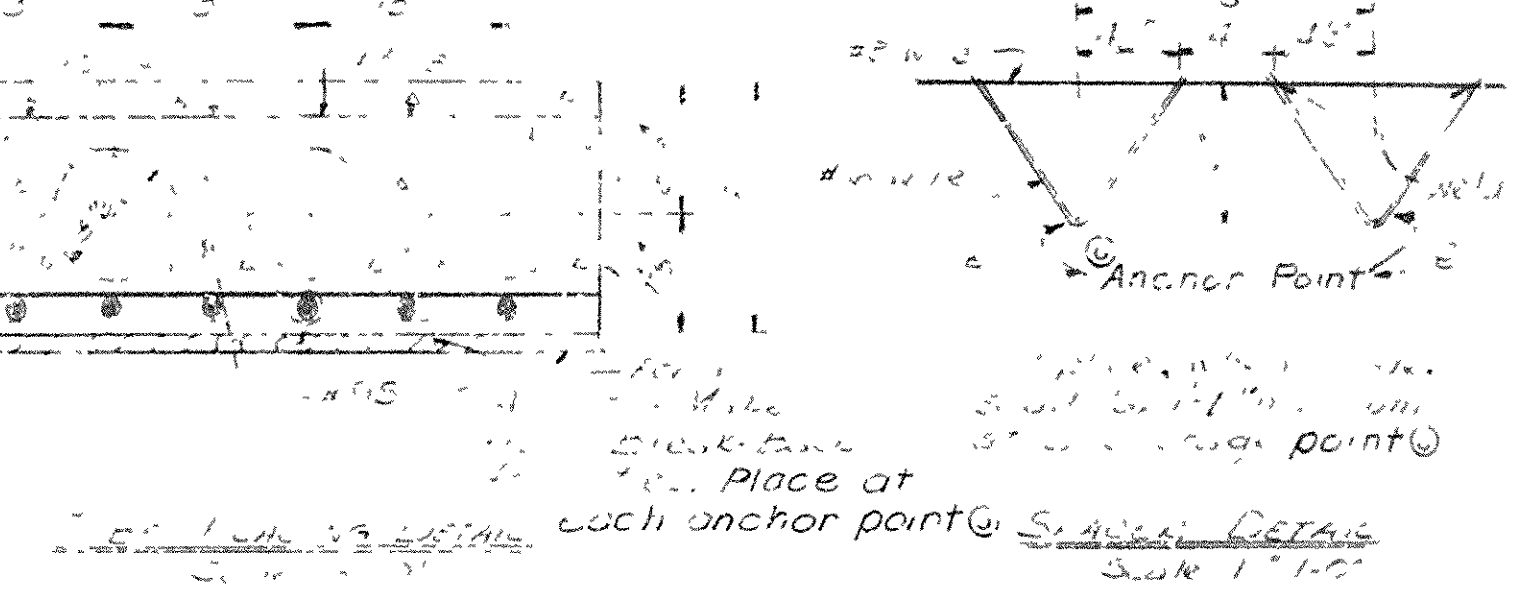
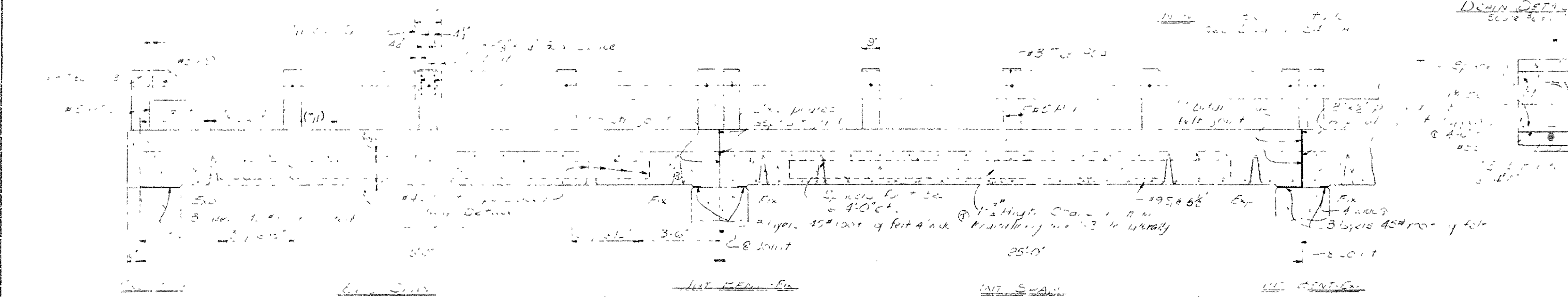


BAR LIST PER SPAN

NO.	SIZE	NO. REIN.	LENGTH	BENDING DIAGRAM
51	9	57	24.7	SH
52	5	34	33.7	SH
53	3	20	30.7	SH
54	3	27	24.7	SH
55	4	5	25.7	SH
56	4	5	24.7	SH
57	4	45	7.6	SH
58	4	50	2.9	SH
59	4	12	2.2	SH
60	4	12	2.5	SH
61	4	18	5.0	SH
62	5	4	2.1	SH
63	5	6	4.7	SH
64	8	24	2.5	SH

Note: All bars are to be placed at the bottom of the deck.



GENERAL NOTES

All concrete to be Class S. All exposed corners to be chamfered 3/4" unless otherwise noted. Reinforcing steel to be deformed bars of intermediate or hard grade. Show lists and bending diagrams must be submitted and approval secured before fabrication is begun.

All reinforcing steel and fiber tubes shall be accurately located in the forms and firmly held in place by means of steel wire supports and spacers for tubes of a sufficient size and number to prevent displacement during the course of construction, but in no case of lesser design than that shown.

Wire supports for reinforcing bars will not be paid for directly, but will be considered subsidiary to the item "Reinforcing Steel".

Tubes for forming voids and wire supports and spacers for tubes will not be paid for directly, but will be considered subsidiary to the item "Class S Concrete".

Shop lists and diagrams of wire supports and spacers for tubes shall be submitted for approval before fabrication is begun.

Roofing felt, bituminous felt, and poured asphalt joints shall be measured and paid for as Class S Concrete.

Steel or Aluminum Plate Guard shall be of the type shown or an equivalent rigid type as approved by the Engineer. The rail, including all concrete posts and fastenings shall be paid for at the unit price bid per linear foot for "Steel or Aluminum Plate Guard Bridge Railing".

SPECIFICATIONS: Arkansas State Highway Commission Standard Specifications for Highway Construction, Edition of 1959.

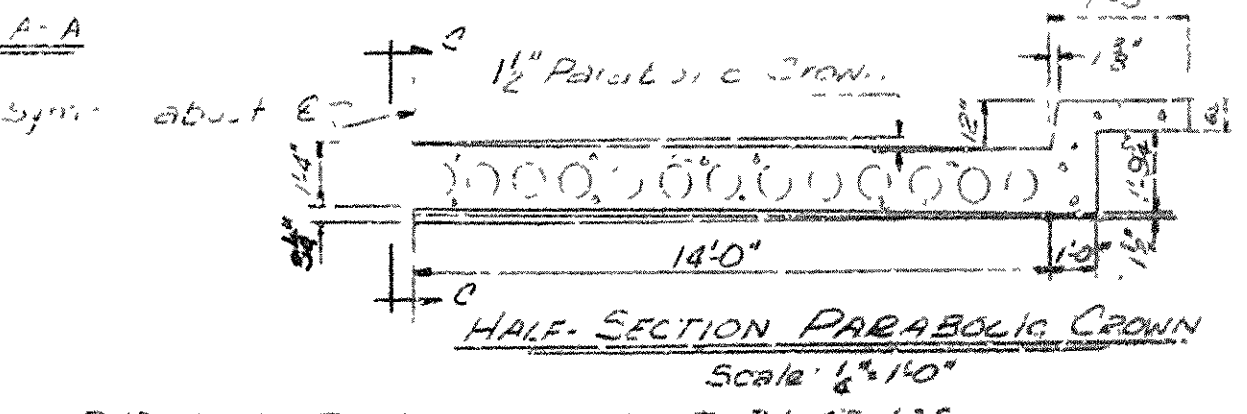
DESIGN SPECIFICATIONS: AASHTO Design Live Load: HS20 & Special Inter-late Loading of two 24,000# axles 4' on ctrs. Distribution: Slab: Dead Load: A68#; Live Load: A68#; Wheel: 11'4" width of wheel plus 30% impact.

Unit Stresses: Class S Concrete (max): 1,200 psi Reinforcing Steel: 20,000 psi

Revised 11-2-51 RWH

Revised 11-2-51 RWH

Revised 11-2-51 RWH



Revised 7-30-63 JWG 7-31-63 JAS included anchor points, changed 1/2" E1 bear. bolsters to 4"0" ctrs

DETAILS OF STANDARD 25'-0" R.C. SLAB SPANS (WITH 28'-0" CLEAR ROADWAY 2 CURBS at 1'-6"

ROUTE SEC. ARKANSAS STATE HIGHWAY COMMISSION LITTLE ROCK, ARK.

BRIDGE NO. DRAWING NO. 5423

BRIDGE ENGINEER