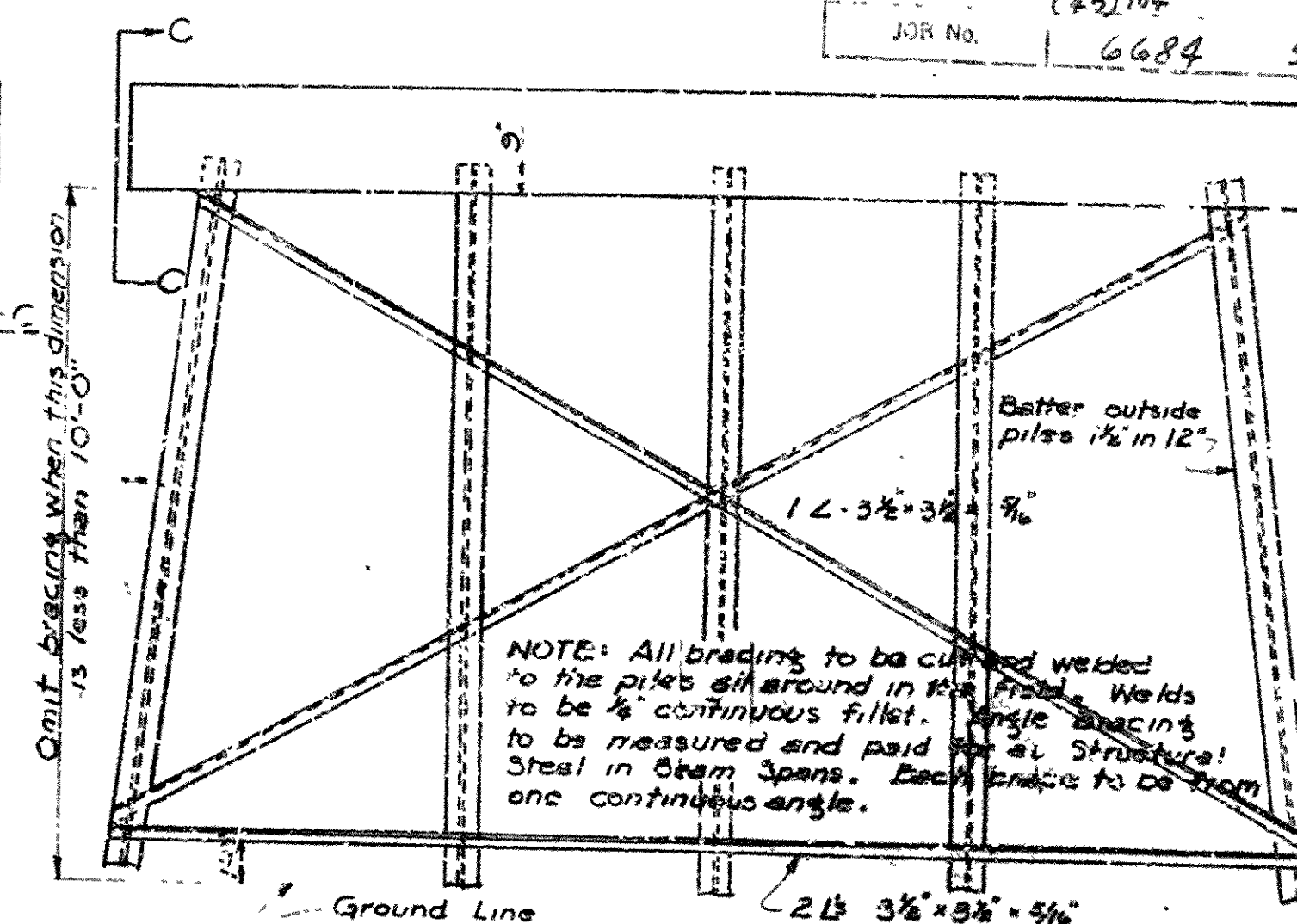
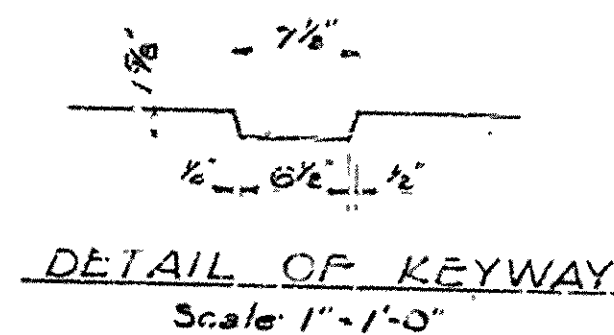
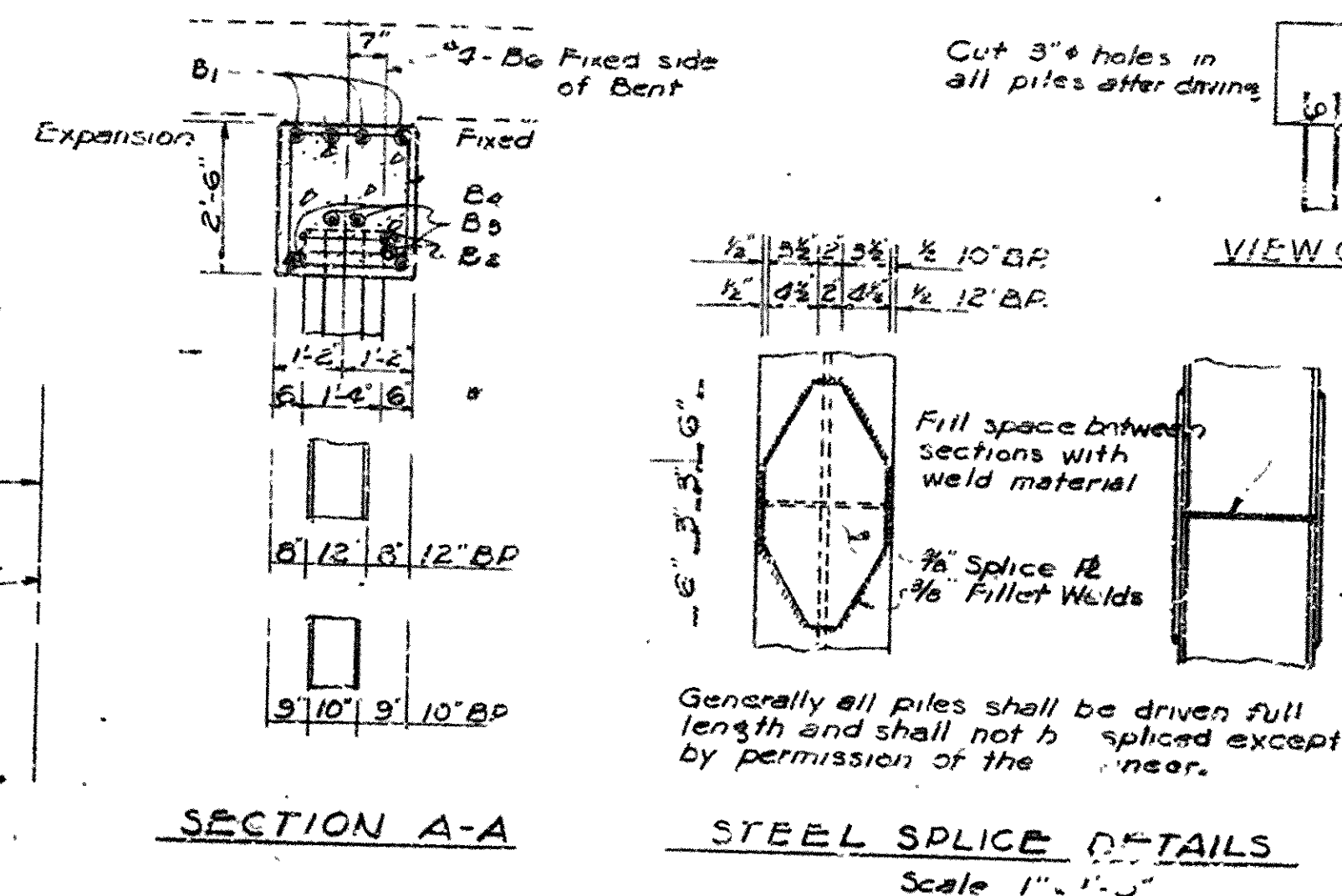


NOTE: Reverse crown when the median is on the left.



GENERAL NOTES

All concrete to be Class S and shall be poured in the dry. All exposed corners to be chamfered $\frac{3}{8}$ " unless otherwise noted.
Reinforcing steel to be deformed bars of intermediate grade unless otherwise noted by Special Provisions. Shop lists and bending diagrams are to be submitted for approval before fabrication is begun.
All piling shall be driven to a minimum capacity of 35 tons per pile.
Piling shall be either 10" Hx42", 12" Hx54" steel bearing piles or 16" octagonal precast concrete piles as shown on the layout.
Volume occupied by embedded pile heads will not be included in the pay quantities of concrete caps.
For Details of Standard 10'-0" RC Slab Spans see Drawing No. 5421B.
SPECIFICATIONS: Arkansas State Highway Commission Standard Specifications for Highway Construction, Edition of 1959.

BAR LIST PER BENT					BENDING DIAGRAM
MARK	SIZE	NO. PER BENT	END INT	LENGTH	
B1	#6	4	4	3'-6"	
B2	#6	4	4	3'-6"	
B3	#6	4	4	30'-1"	
B4	#4	50	50	5'-11"	
B5	#6	15	15	6'-9"	
B6	#4	-	30	2'-6"	
B7	#4	12	-	3'-0"	
B8	#4	8	-	1'-8"	
B9	#4	8	-	3'-9"	

Dimensions are to centers of bars

DETAILS OF
STANDARD PILE BENTS
FOR STD. 30'-0" R.C. SLAB SPANS

28'-0" CLEAR ROADWAY 2 CURBS @ 1'-6"
ROUTE SEC.

ARKANSAS STATE HIGHWAY COMMISSION
LITTLE ROCK, ARK.

DRAWN BY: Aug DATE: 7-16-67
 TRACED BY: _____ DATE: _____
 CHECKED BY: Em DATE: 64 JUL 69
 SCALE: 3/8" = 1'-0"
Except as noted
 BRIDGE NO. _____ DRAWING NO. 5421A
File as DWG No 10923A