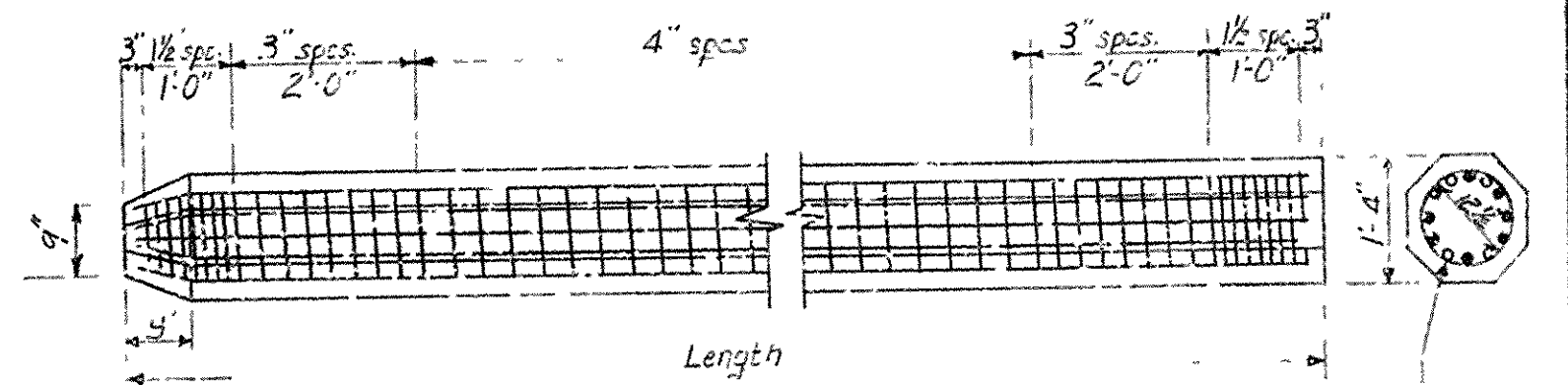


NOTE:  
All concrete to be Class "S".  
For additional General Notes and details  
of slab spans see Drawgs. 5386 & 5387.

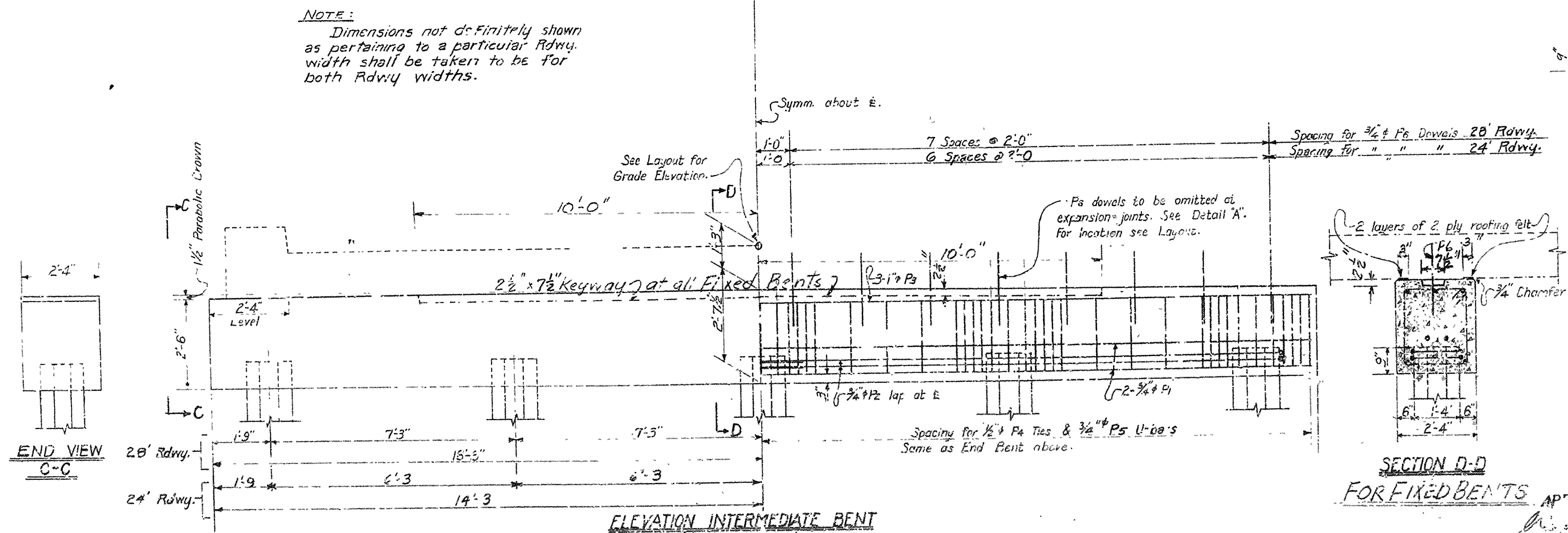


DETAILS OF 15" PRECAST CONCRETE PILES

Drive piles to a minimum bearing of 40 Tons	2	Interm	Beats
" " " " " " " " " " " " " " " "	30	"	End

DET ILS OF R.C. PILE BENTS  
FOR 25.5'-30.0'-25.5' & 25.5'-25.5' .  
R.C. SLABS  
28'-0" CLEAR RDWY. 2 CURBS @ 1'-6"  
24'-0 " " " " @ 1'-6'

ARKANSAS STATE HIGHWAY COMMISSION  
LITTLE ROCK, ARK.  
Drawn By: B.R. Date: 4-1-54 Scale: 1/2" = 1 Ft.  
Traced By: Date:  
Checked By: J.H.H. Date: 4-27-54  
DRAWING NO. 5385







25'-6"

15'-0"

14'-0"

15'-0"

15'-9"

14'-0"

15'-0"

15'-9"

Optimal Constr. Joint

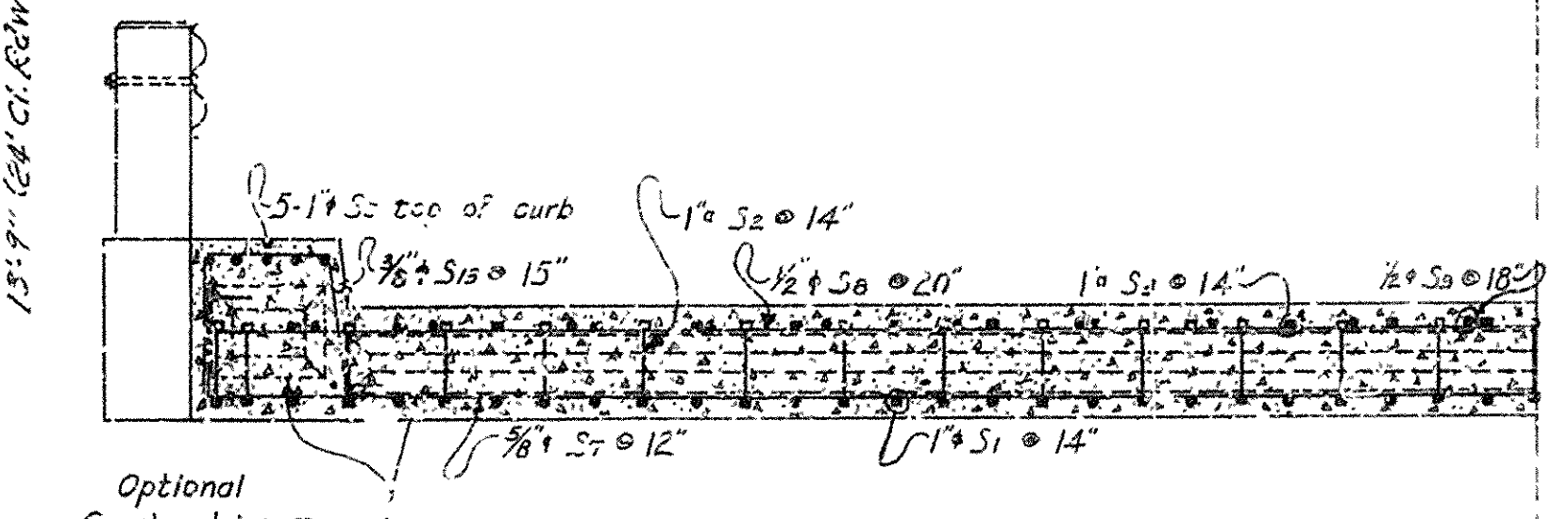
Drain opening. See Detail.

Sym. abt. & Rdwy.

QUARTER PLAN  
 $S = a/s = \frac{36}{28} = 1$

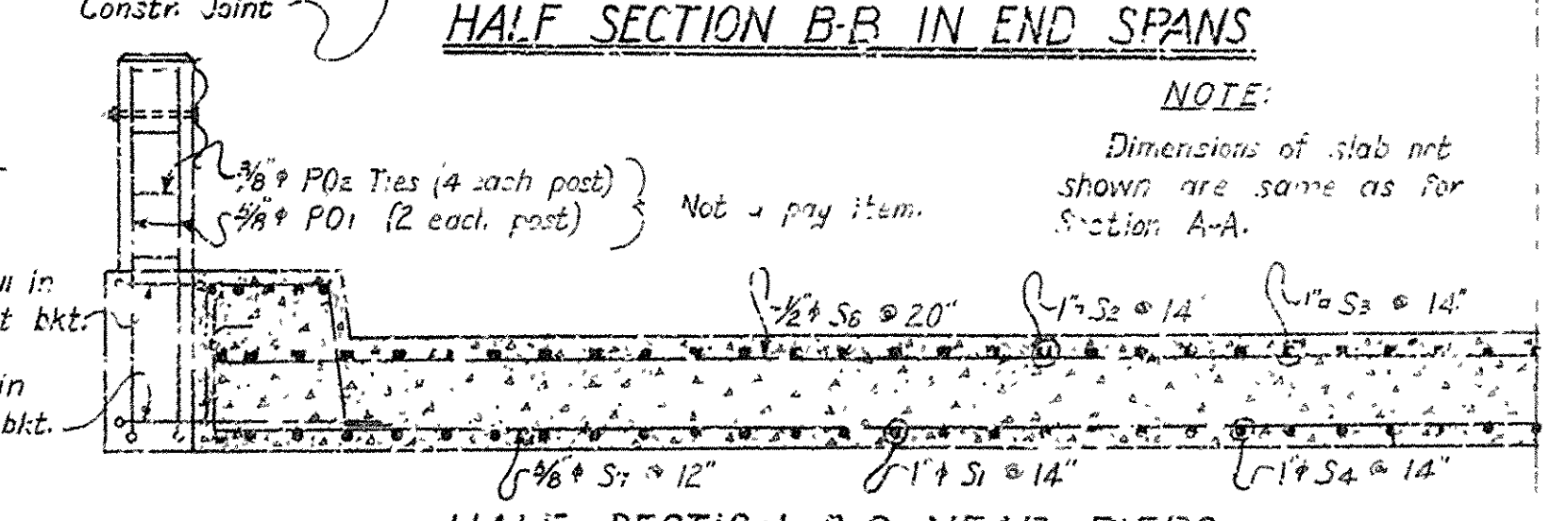
[illegible]

HALF SECTION A-A AT ABUTMENTS

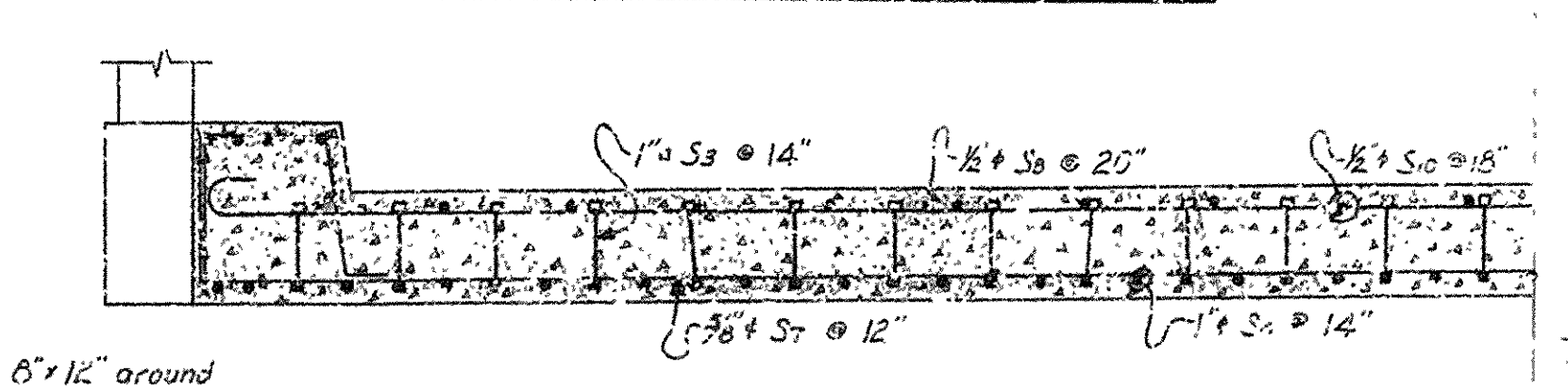


HALF SECTION B-B IN END SPANS

NOTE:  
Dimensions of slab not shown are same as for Section A-A.



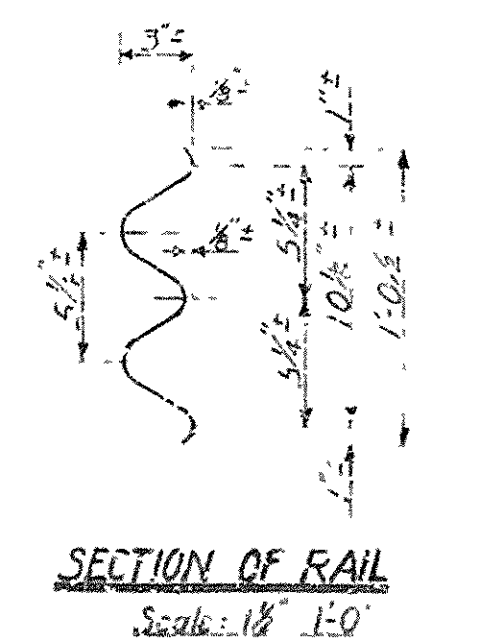
HALF SECTION C-C NEAR PIERS



HALF SECTION D-D IN CENTER SPAN



Place 4 drain openings on each side of roadway at 23'-0", 22'-0", 23'-0" ctrs. See Plan  
Openings to taper from 3'-6" at top of slot  
to 3'-1 1/2" at bottom.  
Set entrance to openings 1 low and travel  
out slot to meet.



SECTION OF RAIL  
Scale: 1 1/2" = 1'-0"

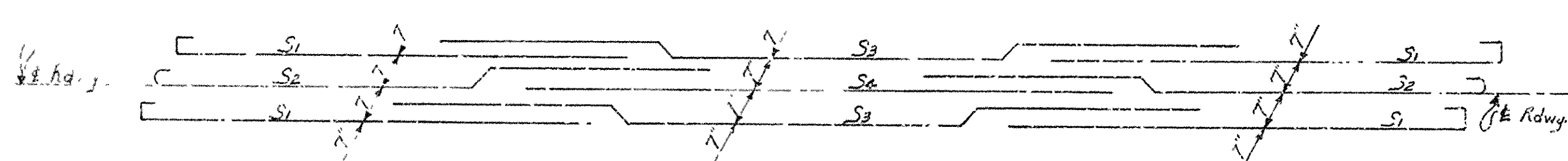


DIAGRAM SHOWING ARRANGEMENT OF MAIN LONGITUDINAL REINFORCING BARS IN ALTERNATE ROWS

GENERAL NOTES

All concrete to be Shrink Comp. All expansion joints to be eliminating & unless otherwise noted the "strong" concrete to be 4000 psi or higher of internally cured. Shop notes and detailing diagrams must be submitted for review and approval secured before fabrication can begin.

All reinforcement to be welded to the bars in the form and firmly held in place by means of steel wire chairs. The reinforcement must be installed in accordance during the course of construction and so as to provide a proper reinforcement. Reinforcement will not be paid for unless it is shown on the drawings and approved by the Engineer. Shop notes and detailing diagrams must be submitted for review and approval.

Figure 10. Reinforcement details for the concrete bridge piers for Shino. Concrete to be Shrink Comp. All expansion joints to be eliminating & unless otherwise noted the "strong" concrete to be 4000 psi or higher of internally cured. Shop notes and detailing diagrams must be submitted for review and approval.

The steel reinforcement shall be of the type shown on an end view of the type of reinforcement by the Engineer. Reinforcement shall include all of the pieces, shall be paid for at the unit price bid per linear foot for Steel Plate Girder Reinforcement.

STEEL PLATE GIRDER REINFORCEMENT SHALL BE SHOWN ON THE DRAWINGS. Shop notes and detailing diagrams must be submitted for review and approval.

Gravel to be placed in the bridge deck. The gravel shall be of the type shown on the drawings. Shop notes and detailing diagrams must be submitted for review and approval.

[illegible]

Revisions:

Pouring sequence 1 PC 2-21-52  
Include 24'-0" Clear Rdwy. FR# 3-23-56

DETAILS OF STANDARD 8'-0"  
THREE SPAN CONTINUOUS RC SLAB  
SPAN LENGTHS 25'-6"-30'-0"-25'-6"  
28'-0" CLEAR RDWY. 2 CURBS @ 1'-6"  
24'-0" CLEAR RDWY. 2 CURBS @ 1'-6"

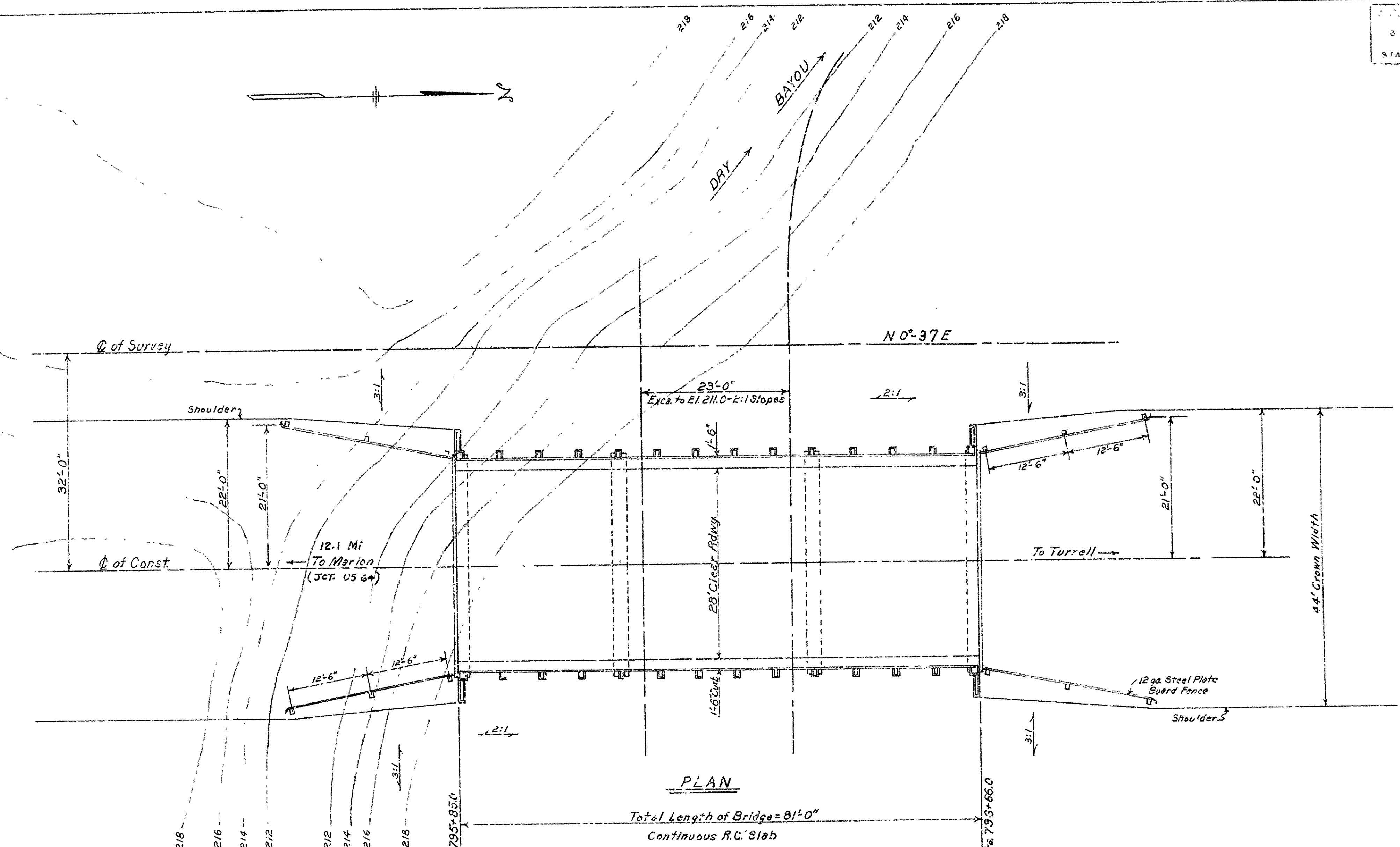
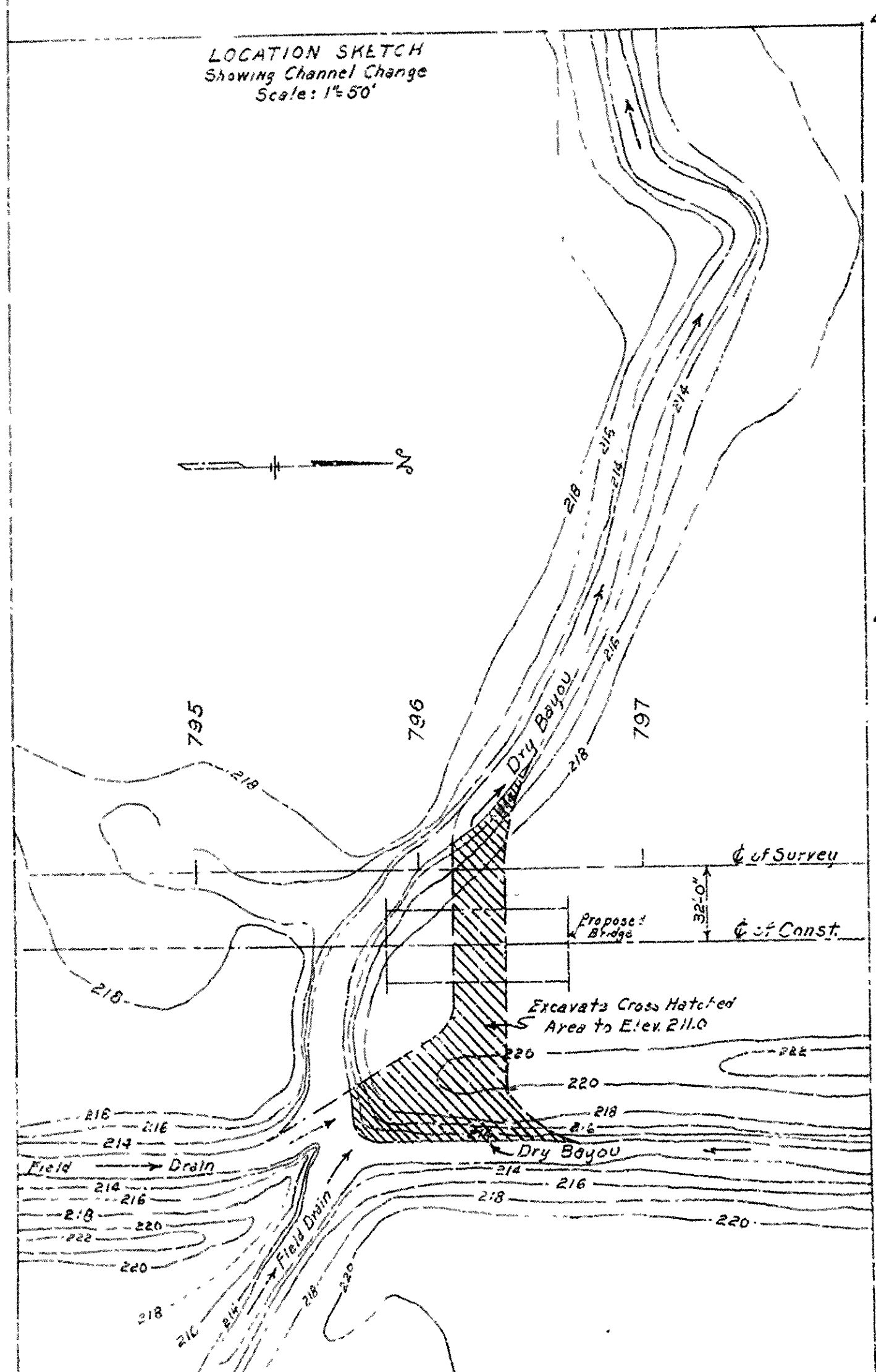
ARKANSAS STATE HIGHWAY COMMISSION  
LITTLE ROCK, ARK.

Drawn By: J.T. Date: 4-12-51  
Traced By: Date:  
Checked By: JMK Date: 4-30-51

Scale: "1" = 1'-0"  
Except as noted

DRAWING NO. 338B





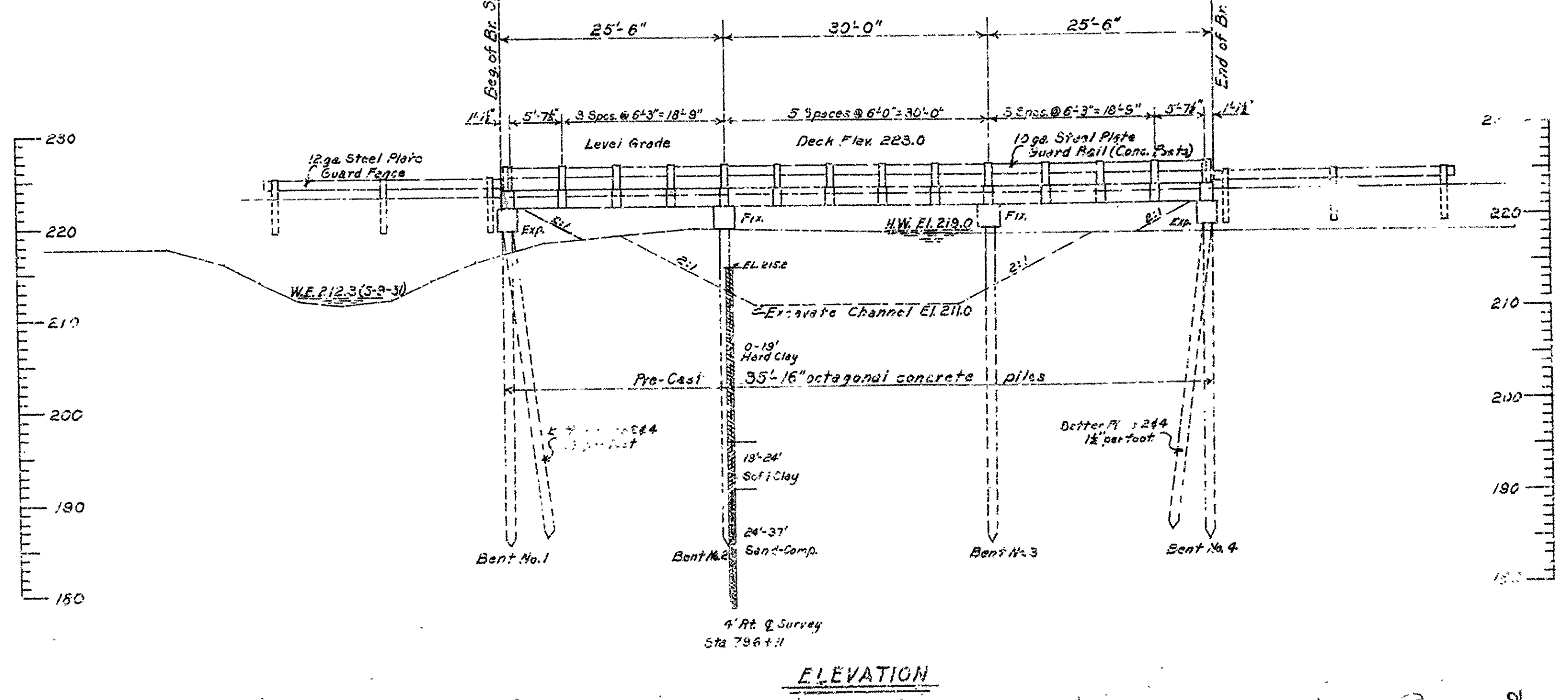
**GENERAL NOTES**

B.M. Elev. 220.34 Nail in side of 10" Red Oak  
14' Lt. of Sta 792+63.  
For Details see Drawings: 5385 & 5386  
Loading: H20 S16  
Stresses: Class "S" Concrete 1200  $\psi$  / in.  
Reinforcing Steel 20,000  $\psi$  / in.

Lengths of pre-cast concrete piles shown are for estimating purposes only. Drive one 40' pile in bent no. 2 as a test pile. Drive pile in Bent No. 1 & 4 after embankment is in place.

Piles to be driven to minimum bearings as follows:  
Bents 1 & 4 30 tons per pile  
Bents 2 & 3 40 tons per pile.

Drainage Area = 6.5 sq. mi.  
C = 0.3



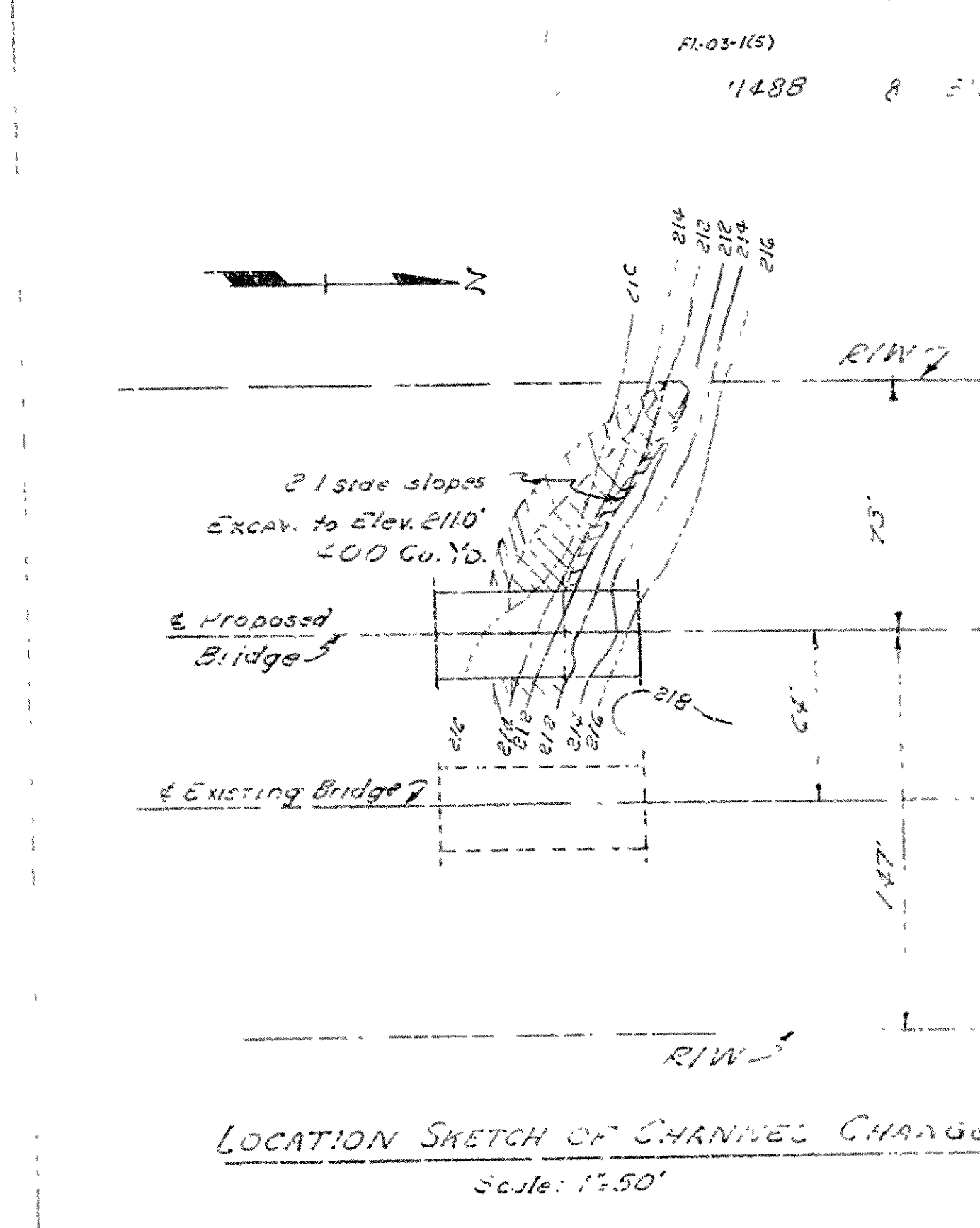
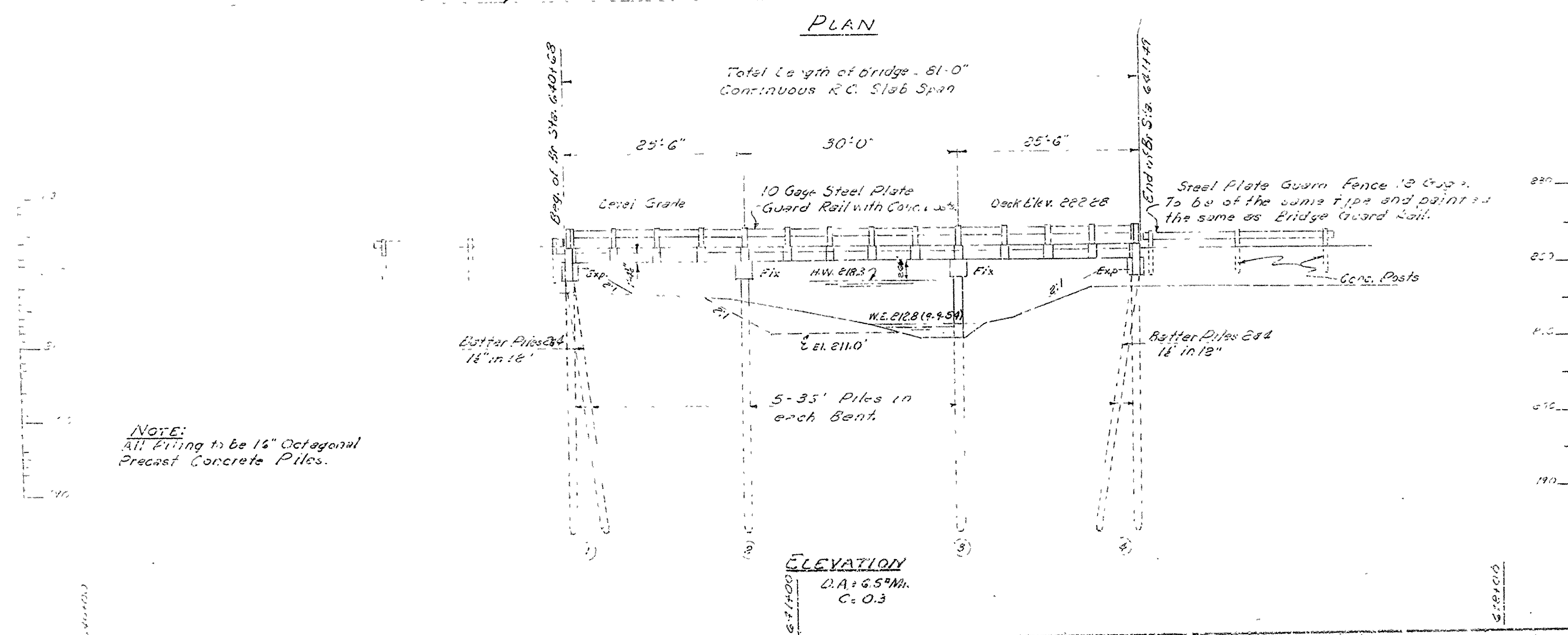
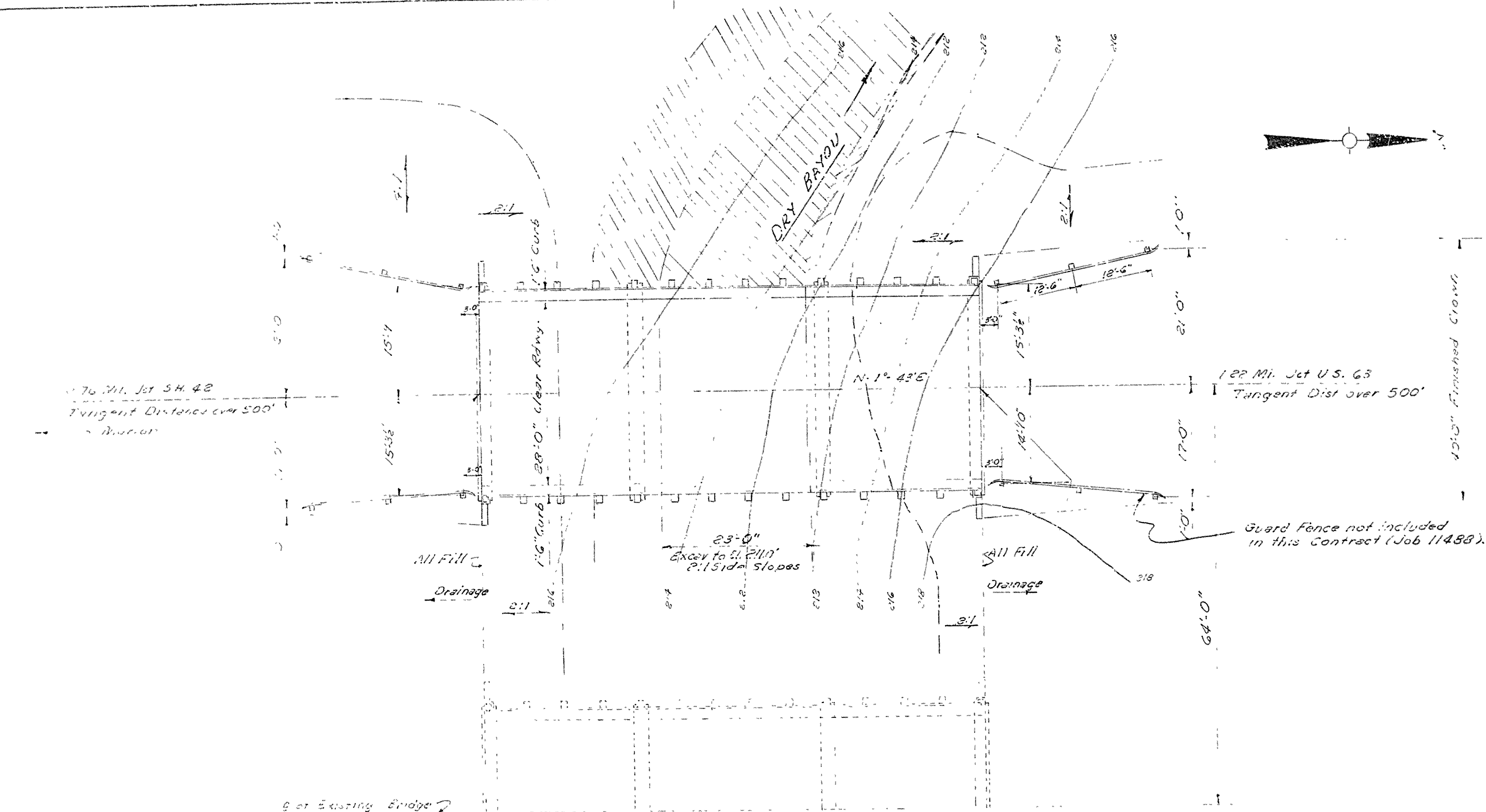
LAYOUT OF  
BRIDGE OVER DRY BAYOU  
MARION-TURRELL ROAD  
CRITTENDEN COUNTY

ROUTE 61 SEC. 1

ARKANSAS STATE HIGHWAY COMMISSION  
LITTLE ROCK, ARK.

Drawn By: R.M. Date: 5-28-53  
Traced By: Date: 6-7-53  
Checked By: Date: 6-7-53  
BRIDGE NO. 4810 DRAWING NO. 8013

Bridge Design Engineer



GENERAL NOTES:  
3.11. x on S.W. corner Bridge 44' R/L Sta. 640+62 @ elev. 600.48  
Piles in End Bents tend to be driven after embankment is  
in place. Lengths of Piling shown are assumed for estimating  
quantities only. Actual lengths to be determined in the field.  
Drive one 40' pile in Bent No. 2 as a Test Pile. Drive piles  
to a minimum bearing of 30 Tons per pile in End Bent, and  
40 Tons per pile in Int. Bents, and to a minimum penetration  
of 20' below the natural ground line.  
For Details see Drawgs. 5385 & 5386.

LOADING: H-20-S16 4.A.S.H.O. 1953  
STRESSES:  
Class "S" Concrete ( $n=10$ ) = 4,400 p.s.i.  
Reinforcing Steel = 20,000 p.s.i.

LAYOUT OF  
BRIDGE OVER DRY BAYOU  
MARION-TURRELL- ADDITIONAL LANES  
CRITTENDEN COUNTY  
ROUTE 61 SECTION 1

ARKANSAS STATE HIGHWAY COMMISSION  
LITTLE ROCK, ARK.

Drawn By F.E.B. Date 5-26-55 Scale 1 in. = 10 ft.  
Checked By J.H.K. Date 6-1-55  
BRIDGE NO. 2810-A DRAWING NO. 8871



DATE REVISED	DATE FILMED	DATE REVISED	DATE FILMED	FILE NO.	STATE	FILE NO.	STATE	FILE NO.	STATE
				6	ARK	7-55-1171, 17			
				JOB NO.		11864			

2809AR-2810R QUANT. SHT. 19217

SCHEDULE OF BRIDGE QUANTITIES

BRIDGE NO.	CODE NO.	NAME	PLATE	UNIT	ITEM NO.	501	SP # 802	SP # 802	803	804	804	*SP # 805	806	812	SP JOB 11864
					ITEM	COMMON EXCAVATION FOR STRUCTURES - BRIDGE	CLASS "S" CONCRETE	CLASS "S (AE)" CONCRETE	BOILED LINSEED OIL	REINFORCING STEEL (GRADE 40)	REINFORCING STEEL (GRADE 60)	PRECAST CONCRETE PILING (16" OCT)	METAL BRIDGE RAILING (TYPE A)	BRIDGE NAME PLATES (TYPE C)	REMODELING EXISTING BRIDGES
						CU. YD.	CU. YD.	CU. YD.	GAL.	LB.	LB.	LIN. FT.	LIN. FT.	EACH	LUMP SUM
2809R	X020	BIG CREEK		END BENTS 1 & 7	32	6.66				1116		208			
				INTERIOR BENTS 2-6		10.44				2144		580			
				2-81'0" CONT. R.C. SLAB UNITS			311.50	16.2		35460		319.0	1		
				TOTAL FOR BRIDGE 2809R	32	17.10	311.50	16.2	3260	35460	788	319.0	1	0.33	
2809AR	X020	BIG CREEK		END BENTS 1 & 7	32	6.66				1116		208			
				INTERIOR BENTS 2-6		10.44				2144		580			
				2-81'0" CONT. R.C. SLAB UNITS			311.50	16.2		35460		319.0	1		
				TOTAL FOR BRIDGE 2809AR	32	17.10	311.50	16.2	3260	35460	788	319.0	1	0.33	
2810R	X021	DRY BAYOU		END BENTS 1 & 4	32	6.66				1116		140			
				INTERIOR BENTS 2 & 3		4.14				854		140			
				81'0" CONT. R.C. SLAB UNIT			156.10	8.1		17830		157.0	1		
				TOTAL FOR BRIDGE 2810R	32	10.80	156.10	8.1	1970	17830	280	157.0	1	0.17	
2810AR	X021	DRY BAYOU		END BENTS 1 & 4	32	6.66				1116		140			
				INTERIOR BENTS 2 & 3		4.14				854		140			
				81'0" CONT. R.C. SLAB UNIT			156.10	8.1		17830		157.0	1		
				TOTAL FOR BRIDGE 2810AR	32	10.80	156.10	8.1	1970	17830	280	157.0	1	0.17	
TOTAL FOR JOB 11864					128	55.80	935.20	43.6	10,460	106,580	2136	952.0	4	1.00	

\* SP REFERS TO SP 802-5

SCHEDULE OF BRIDGE QUANTITIES  
CLARKDALE - MISS. CO. LINE RECONST.  
CRITTENDEN COUNTY  
ROUTE 55 SEC. 11  
ARKANSAS STATE HIGHWAY COMMISSION  
LITTLE ROCK, ARK.

DRAWN BY: JCK DATE: 2-26-75  
CHECKED BY: JCK DATE: 2-27-75  
DESIGNED BY: JCK DATE: 2-26-75  
SCALE: None  
BRIDGE NO. 2809AR, 2809R, 2810AR & 2810R DRAWING NO. 19217

*David P. ...*  
BRIDGE ENGINEER





BAR LIST - PER BENT

GENERAL NOTES

STRIP, CLEAN, AND RETAIN EXISTING WINGWALL REINFORCEMENT EXTENDING FROM THE EXISTING  
END BENT CAP INTO THE NEW CAP A MINIMUM OF 2'-0"

ALL NEW CONCRETE IN THE SUBSTRUCTURE WILL BE CLASS S. ALL EXPOSED CORNERS WILL BE CHAMFERED 3/4" UNLESS OTHERWISE NOTED.

NEW REINFORCING SHALL BE ASTM A615, GRADE 40. SHOP LISTS AND BENDING DIAGRAM'S MUST BE SUBMITTED AND APPROVAL SECURED BEFORE FABRICATION IS BEGUN.

IN GENERAL, ALL CONSTRUCTION JOINTS SHALL BE HORIZONTAL AND PROVIDED WITH KEYS NOT LESS THAN 1-1/2" HIGH COVERING THE MIDDLE THIRD OF BOTH DIMENSIONS.

FOR ADDITIONAL GENERAL NOTES, SEE BRIDGE LAYOUT DRAWING NO. 19218 OR 19223

UNI: STRESSES: CLASS S CONCRETE (N=10)	1,200 PSI
REINFORCING STEEL (A615-40)	20,000 PSI

PLAN  
Scale: 3/8"

Scale: 3/8" = 1'-0"

## ELEVATION

Sample:  $35^{\circ} = 1^{\circ}$

(Looking Forward for Bridges 2807AR & 2810AR)  
(Looking Back For Bridges 2807AR & 2810AR)

## SECTION A-A

Sc2/3: 4.10

## SECTION B-B

Angle:  $3^{\circ} \pm 1.0^{\circ}$

## SECTION C-C

Scorie:  $\frac{3}{4}'' = 1 \text{ (1)}$

## SECTION D-D

Scale: 3/4" = 1'-0"

SHEET 2 OF 2  
DETAILS FOR WIDENING BENTS  
BRIDGE OVER BIG CREEK  
AND DRY BAYOU  
CLARKEDALE - MISS. CO. LINE  
RECONSTRUCTION  
CRITTENDEN COUNTY

ROUTE I-35 SEC. 11

ARKANSAS STATE HIGHWAY COMMISSION

LITTLE ROCK, ARK

DATE: 2-18-75

DRAWN BY: JCK DATE: 2-20-75 SCALE: AS NOTED  
CHECKED BY: JCK DATE: 2-20-75

DESIGNED BY: JCK DATE: 2-14-73

BRIDGE NO. 2809R & 2809AR DRAWING NO. 19220

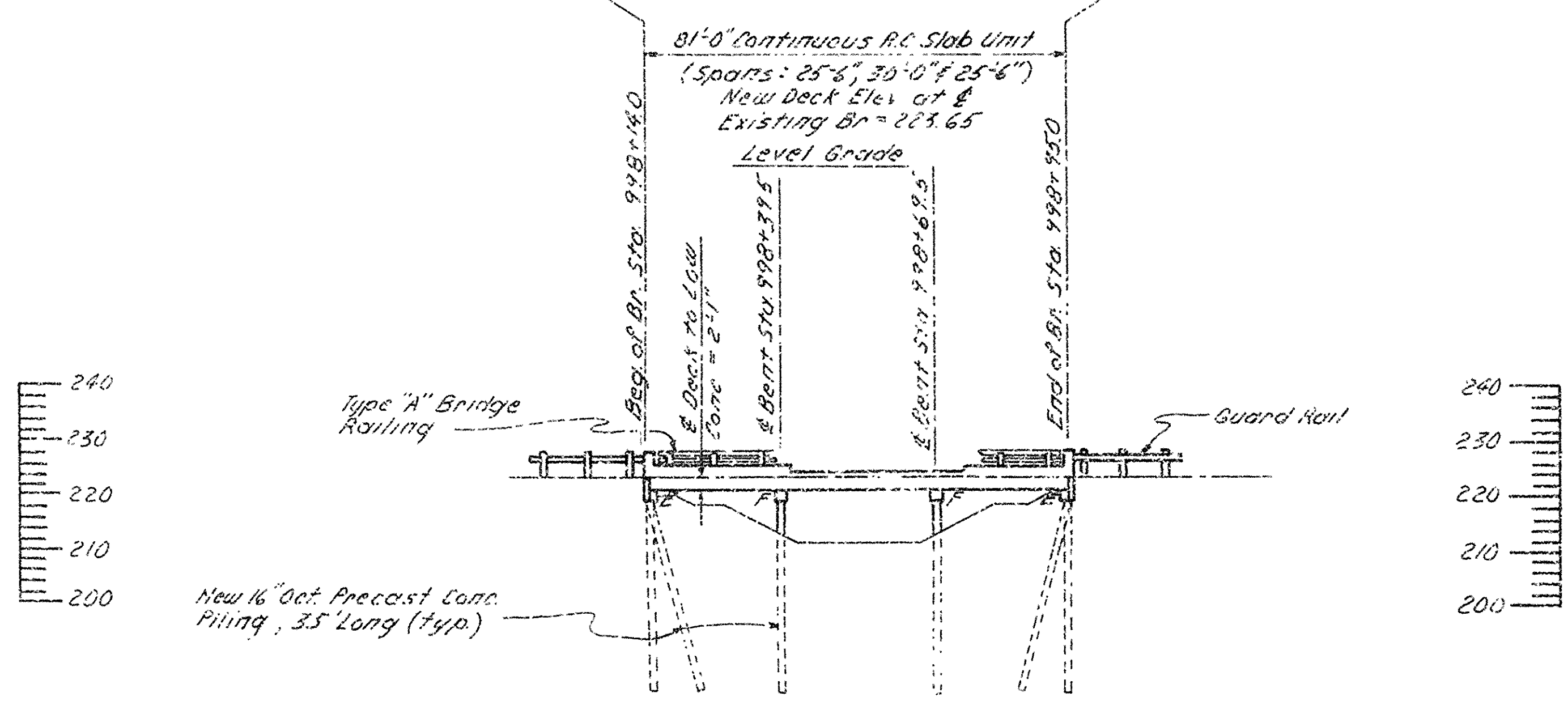
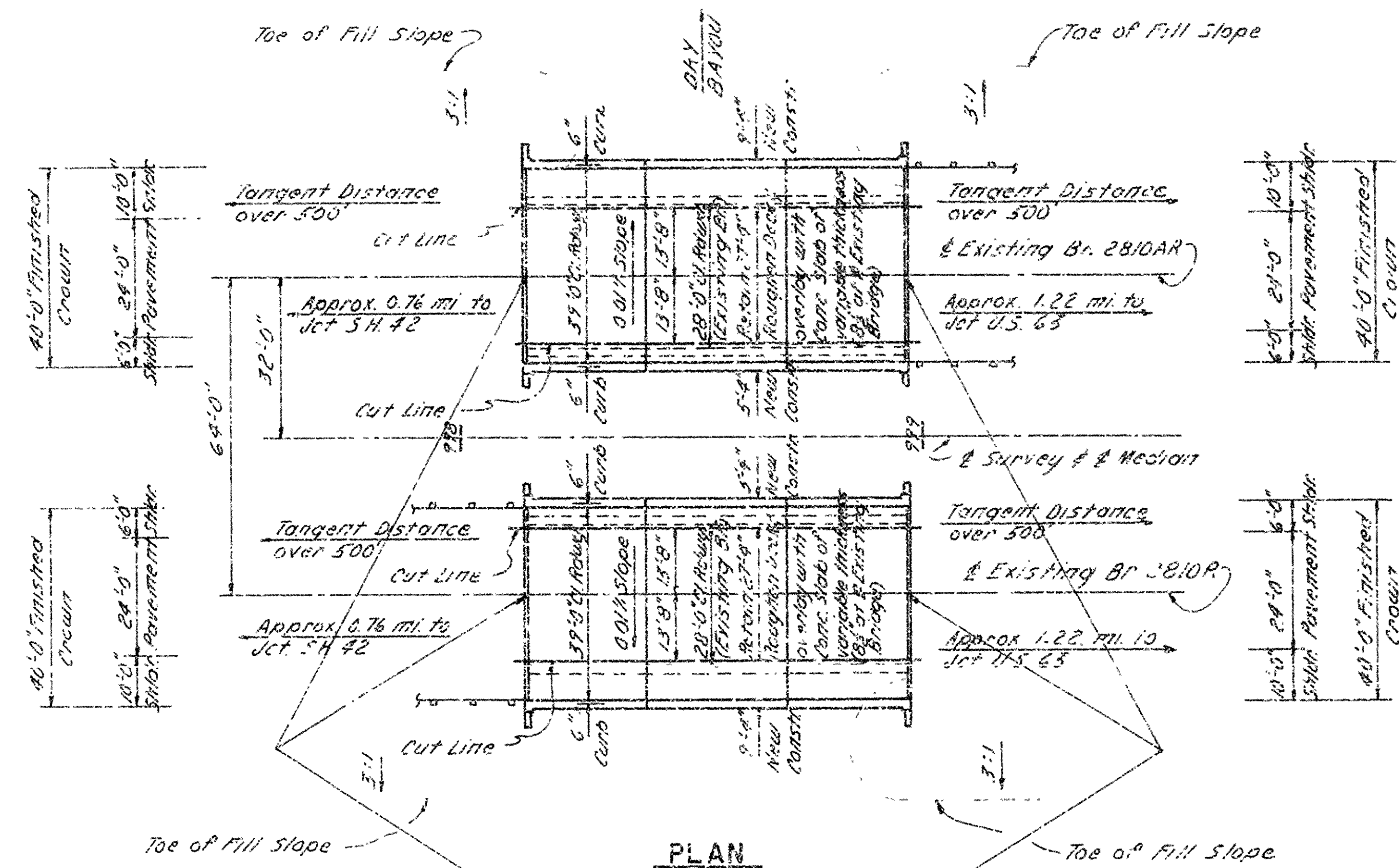
Jesse Pinkerton  
RECEIVED

DATE REVISED	DATE REVISED	DATE REVISED	DATE FILMED	FED. ROAD NO.	STATE	FED. AID PROJ. NO.	SHEET NO.	TOTAL SHEETS
				6	ARK.	D-55-1(19)17		
							JOB NO.	11864
								16
								99

① 2810AR, 2810R LAYOUT 19223



Note: For R/W Data, Guard Rail and Approach Slabs & Butters - see Rdy. Plans



# GENERAL NOTES

BENCH MARK: "X" CUT ON SOUTH END OF BRIDGE END 12' LT. STA. 998+44, ELEV. 225.53

ALL PILING SHALL BE 16" OCTAGONAL PRECAST CONCRETE AND SHALL BE DRIVEN WITH AN APPROVED AIR, STEAM, OR DIESEL HAMMER TO A MINIMUM BEARING CAPACITY OF 44 TONS PER PILE AND TO A MINIMUM PENETRATION OF 20' BELOW THE GROUND LINE. LENGTHS OF PILING SHOWN ARE BASED ON PILING DRIVEN IN THE EXISTING BRIDGE NO. 2810A.

ALL CONCRETE IN THE SUPERSTRUCTURE SHALL BE CLASS S (AR). ALL CONCRETE IN THE SUBSTRUCTURE SHALL BE CLASS S AND SHALL BE POURED IN THE DRY. ALL EXPOSED CORNERS SHALL BE CHAMFERED 3/4" UNLESS OTHERWISE NOTED.

THE CONTRACTOR SHALL MAKE CHECK MEASUREMENTS OF THE EXISTING BRIDGE AND MAKE ADJUSTMENTS NECESSARY TO FIT THE NEW WORK TO THE EXISTING STRUCTURE.

PLANS OF THE EXISTING STRUCTURE WILL BE MADE AVAILABLE TO THE CONTRACTOR UPON REQUEST.

FOR PLANS OF EXISTING STRUCTURE, SEE DWG. NO. 5385, 5386, 8013 & 8871

FOR DETAILS OF WIDENING BENTS, SEE DWG. NO. 19219 & 19220  
FOR DETAILS OF WIDENING SPANS, SEE DWG. NO. 19224 & 19225

SPECIFICATIONS: ARKANSAS STATE HIGHWAY COMMISSION'S STANDARD SPECIFICATIONS FOR HIGHWAY CONSTRUCTION, EDITION OF 1972 AND APPLICABLE SPECIAL PROVISIONS.

DESIGN SPECIFICATIONS: AASHTO 1973  
LIVE LOADING: HS20 AND SPECIAL INTERSTATE LOADING

UNIT STRESSES:  
SUPERSTRUCTURE: CLASS S (AR) CONCRETE (N=10) 1,400 PSI  
REINFORCING STEEL (A615, GRADE 60) 24,000 PSI  
SUBSTRUCTURE: CLASS S CONCRETE (N=10) 1,200 PSI  
REINFORCING STEEL (A615, GRADE 40) 20,000 PSI

THE EXISTING PLATE GUARD RAIL IS TO BE SALVAGED AND SHALL REMAIN THE PROPERTY OF THE STATE.

LAYOUT OF BRIDGES OVER  
DRY BAYOU  
CLARKEDALE - MISS. CO. LINE RECONST.  
CRITTENDEN COUNTY  
ROUTE 55 SEC. 11  
ARKANSAS STATE HIGHWAY COMMISSION  
LITTLE ROCK, ARK.

DRAWN BY: J.P.S. DATE: 2-18-75  
CHECKED BY: J.C.K. DATE: 2-26-75  
DESIGNED BY: J.C.K. DATE: 2-7-75  
BRIDGE NO. 2810AR & 2810R  
DRAWING NO. 19223

BRIDGE ENGINEER

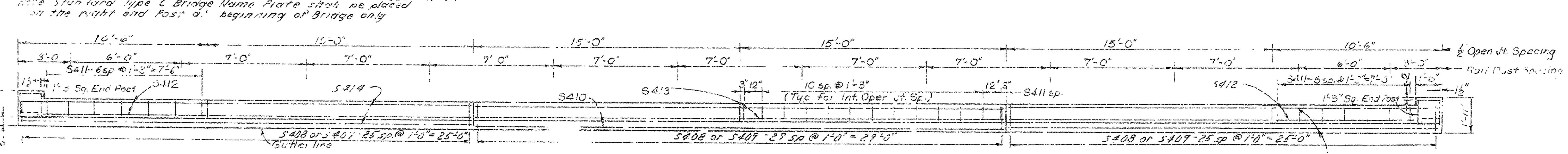
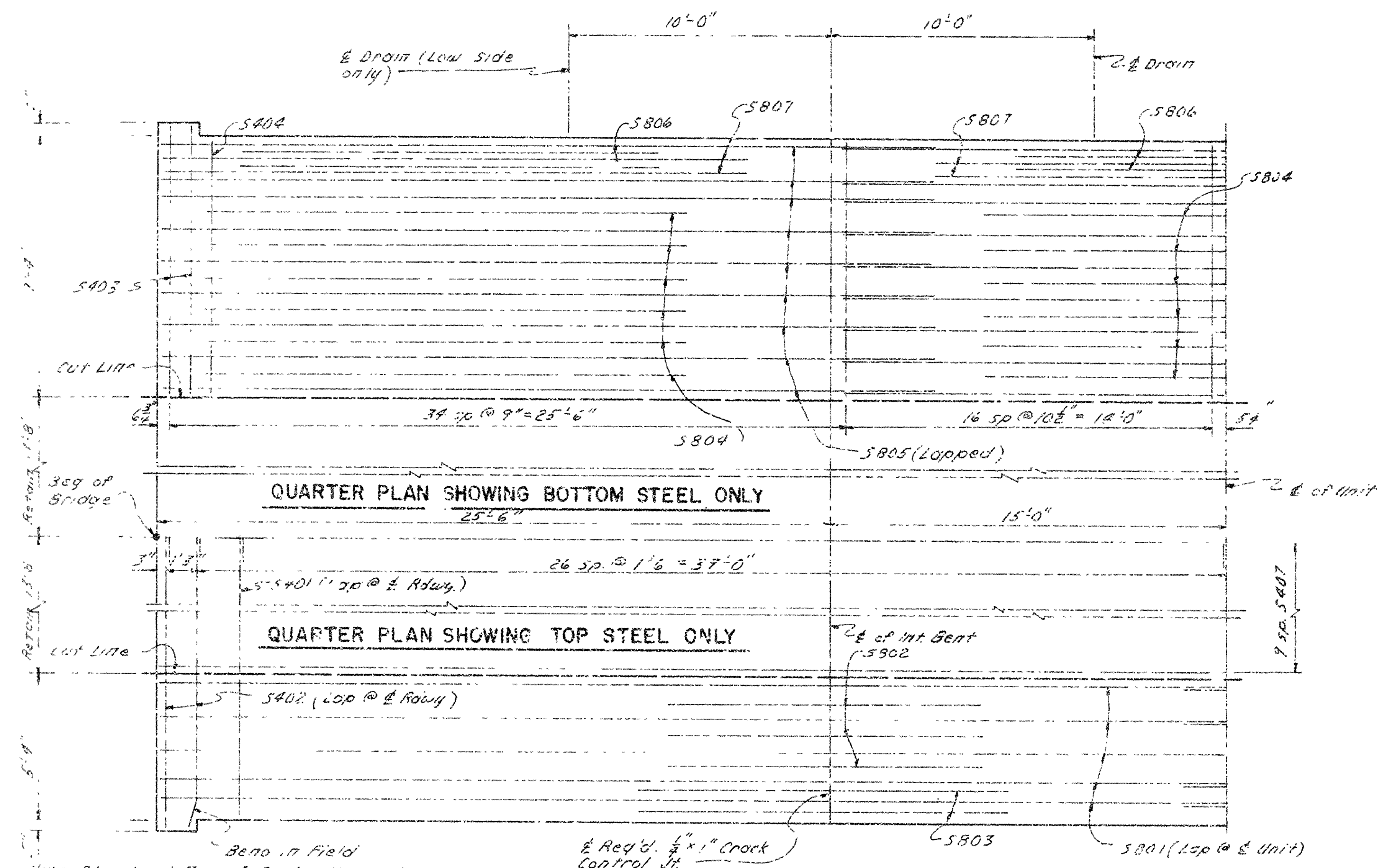


DATE DESIGNED	DATE FILLED	DATE REVISED	DATE FILLED	PREP. ROAD DIST. NO.	STATE	FED. AID PROJ. NO.	SHEET NO.	TOTAL SHEETS
				6	ARK.	1-15-(71)17		
				JOB NO.		11864	17	83
				(1) 2810AR, 2810R, 87 DTLS 19224				

BAR LIST PER 8'-0" CONTINUOUS UNIT

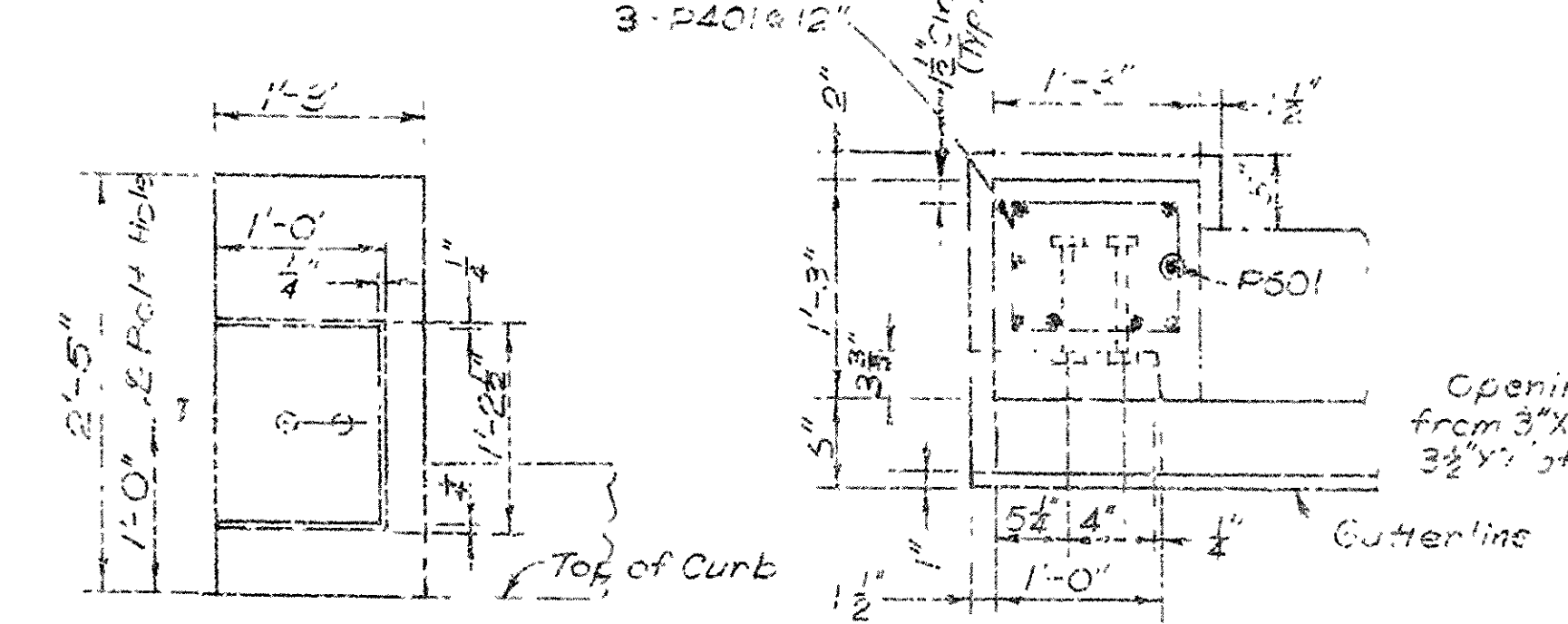
Mark	No. Req'd	Length	Pin Dia.	Bending Diagrams
S401	102	21'-8"	5/8"	
S402	8	22'-1"	5/8"	
S403	4	7'-6"	5/8"	
S404	98	7'-1"	5/8"	
S405	4	5'-6"	5/8"	
S406	98	5'-1"	5/8"	
S407	57	28'-0"	5/8"	
S408	82	6'-0"	2"	
S409	32	6'-9"	2"	
S410	4	29'-8"	5/8"	
S411	132	4'-11"	2"	
S412	8	10'-0"	5/8"	
S413	16	14'-8"	5/8"	
S414	8	25'-2"	5/8"	
P401	12	4'-3"	2"	
P402	32	4'-0"	5/8"	
S701	588	2'-8"	5/8"	
S801	26	4'-0"	5/8"	
S802	13	12'-6"	5/8"	
S803	3	14'-8"	5/8"	
S804	27	13'-4"	5/8"	
S805	42	29'-0"	5/8"	
S806	12	16'-0"	5/8"	
S807	12	22'-0"	5/8"	

Dimensions are cut to suit of bars



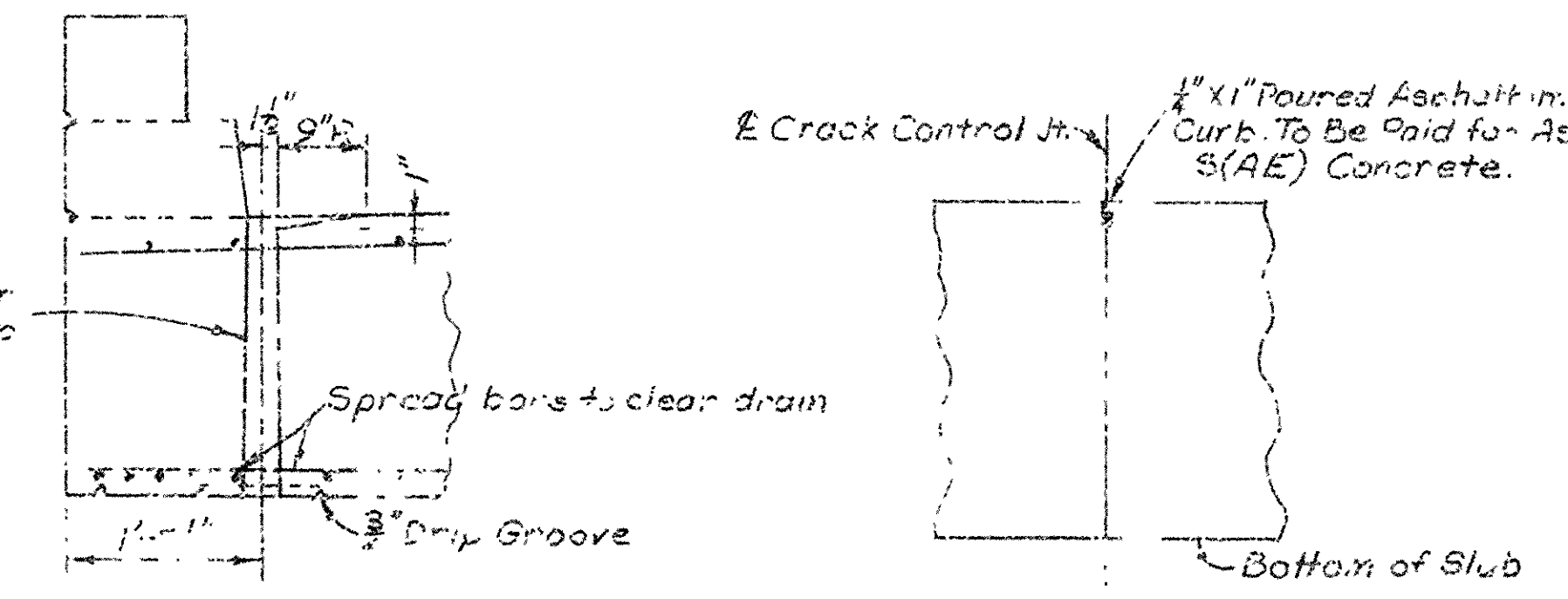
PLAN OF CURB & POST

Note: Place Driveway at Midway Between 1/2" Open Joints

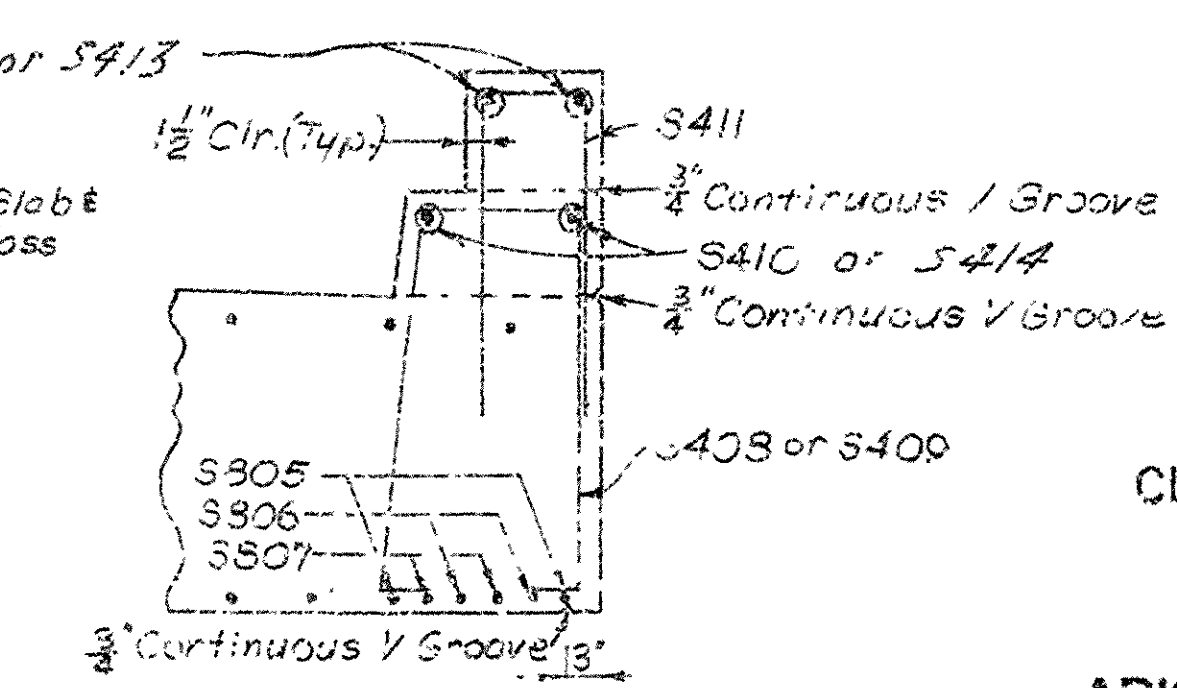


END POST ELEVATION  
Scale: 1"=1'-0"

END POST PLAN  
Scale: 1"=1'-0"



DRAIN DETAIL  
Scale: 1/2"=1'-0"



CURB & PARAPET DETAILS  
Scale: 1/2"=1'-0"

SHEET 1 OF 2  
DETAILS OF 8'-0"  
CONTINUOUS R C SLAB UNIT  
BRIDGE OVER DRY CAYOU  
CLARKDALE-MISS. CO. LINE RECONST  
CRITTENDEN COUNTY  
ROUTE 1-55 SEC. 11  
ARKANSAS STATE HIGHWAY COMMISSION  
LITTLE ROCK, ARK.  
DESIGNED BY: DATE: 2-20-73  
CHECKED BY: DATE: 3-1-73  
BRIDGE NO. 2810AR & 2810R DRAWING NO 19224



