

STATE JOB NO.

24' Rdwy.		28' Rdwy.		32' Rdwy.		36' Rdwy.		40' Rdwy.		44' Rdwy.		48' Rdwy.		52' Rdwy.		56' Rdwy.		60' Rdwy.		64' Rdwy.		68' Rdwy.		72' Rdwy.		76' Rdwy.		80' Rdwy.		84' Rdwy.		88' Rdwy.		92' Rdwy.		96' Rdwy.		100' Rdwy.		104' Rdwy.		108' Rdwy.		112' Rdwy.		116' Rdwy.		120' Rdwy.		124' Rdwy.		128' Rdwy.		132' Rdwy.		136' Rdwy.		140' Rdwy.		144' Rdwy.		148' Rdwy.		152' Rdwy.		156' Rdwy.		160' Rdwy.		164' Rdwy.		168' Rdwy.		172' Rdwy.		176' Rdwy.		180' Rdwy.		184' Rdwy.		188' Rdwy.		192' Rdwy.		196' Rdwy.		200' Rdwy.		204' Rdwy.		208' Rdwy.		212' Rdwy.		216' Rdwy.		220' Rdwy.		224' Rdwy.		228' Rdwy.		232' Rdwy.		236' Rdwy.		240' Rdwy.		244' Rdwy.		248' Rdwy.		252' Rdwy.		256' Rdwy.		260' Rdwy.		264' Rdwy.		268' Rdwy.		272' Rdwy.		276' Rdwy.		280' Rdwy.		284' Rdwy.		288' Rdwy.		292' Rdwy.		296' Rdwy.		300' Rdwy.		304' Rdwy.		308' Rdwy.		312' Rdwy.		316' Rdwy.		320' Rdwy.		324' Rdwy.		328' Rdwy.		332' Rdwy.		336' Rdwy.		340' Rdwy.		344' Rdwy.		348' Rdwy.		352' Rdwy.		356' Rdwy.		360' Rdwy.		364' Rdwy.		368' Rdwy.		372' Rdwy.		376' Rdwy.		380' Rdwy.		384' Rdwy.		388' Rdwy.		392' Rdwy.		396' Rdwy.		400' Rdwy.		404' Rdwy.		408' Rdwy.		412' Rdwy.		416' Rdwy.		420' Rdwy.		424' Rdwy.		428' Rdwy.		432' Rdwy.		436' Rdwy.		440' Rdwy.		444' Rdwy.		448' Rdwy.		452' Rdwy.		456' Rdwy.		460' Rdwy.		464' Rdwy.		468' Rdwy.		472' Rdwy.		476' Rdwy.		480' Rdwy.		484' Rdwy.		488' Rdwy.		492' Rdwy.		496' Rdwy.		500' Rdwy.		504' Rdwy.		508' Rdwy.		512' Rdwy.		516' Rdwy.		520' Rdwy.		524' Rdwy.		528' Rdwy.		532' Rdwy.		536' Rdwy.		540' Rdwy.		544' Rdwy.		548' Rdwy.		552' Rdwy.		556' Rdwy.		560' Rdwy.		564' Rdwy.		568' Rdwy.		572' Rdwy.		576' Rdwy.		580' Rdwy.		584' Rdwy.		588' Rdwy.		592' Rdwy.		596' Rdwy.		600' Rdwy.		604' Rdwy.		608' Rdwy.		612' Rdwy.		616' Rdwy.		620' Rdwy.		624' Rdwy.		628' Rdwy.		632' Rdwy.		636' Rdwy.		640' Rdwy.		644' Rdwy.		648' Rdwy.		652' Rdwy.		656' Rdwy.		660' Rdwy.		664' Rdwy.		668' Rdwy.		672' Rdwy.		676' Rdwy.		680' Rdwy.		684' Rdwy.		688' Rdwy.		692' Rdwy.		696' Rdwy.		700' Rdwy.		704' Rdwy.		708' Rdwy.		712' Rdwy.		716' Rdwy.		720' Rdwy.		724' Rdwy.		728' Rdwy.		732' Rdwy.		736' Rdwy.		740' Rdwy.		744' Rdwy.		748' Rdwy.		752' Rdwy.		756' Rdwy.		760' Rdwy.		764' Rdwy.		768' Rdwy.		772' Rdwy.		776' Rdwy.		780' Rdwy.		784' Rdwy.		788' Rdwy.		792' Rdwy.		796' Rdwy.		800' Rdwy.		804' Rdwy.		808' Rdwy.		812' Rdwy.		816' Rdwy.		820' Rdwy.		824' Rdwy.		828' Rdwy.		832' Rdwy.		836' Rdwy.		840' Rdwy.		844' Rdwy.		848' Rdwy.		852' Rdwy.		856' Rdwy.		860' Rdwy.		864' Rdwy.		868' Rdwy.		872' Rdwy.		876' Rdwy.		880' Rdwy.		884' Rdwy.		888' Rdwy.		892' Rdwy.		896' Rdwy.		900' Rdwy.		904' Rdwy.		908' Rdwy.		912' Rdwy.		916' Rdwy.		920' Rdwy.		924' Rdwy.		928' Rdwy.		932' Rdwy.		936' Rdwy.		940' Rdwy.		944' Rdwy.		948' Rdwy.		952' Rdwy.		956' Rdwy.		960' Rdwy.		964' Rdwy.		968' Rdwy.		972' Rdwy.		976' Rdwy.		980' Rdwy.		984' Rdwy.		988' Rdwy.		992' Rdwy.		996' Rdwy.		1000' Rdwy.		1004' Rdwy.		1008' Rdwy.		1012' Rdwy.		1016' Rdwy.		1020' Rdwy.		1024' Rdwy.		1028' Rdwy.		1032' Rdwy.		1036' Rdwy.		1040' Rdwy.		1044' Rdwy.		1048' Rdwy.		1052' Rdwy.		1056' Rdwy.		1060' Rdwy.		1064' Rdwy.		1068' Rdwy.		1072' Rdwy.		1076' Rdwy.		1080' Rdwy.		1084' Rdwy.		1088' Rdwy.		1092' Rdwy.		1096' Rdwy.		1100' Rdwy.		1104' Rdwy.		1108' Rdwy.		1112' Rdwy.		1116' Rdwy.		1120' Rdwy.		1124' Rdwy.		1128' Rdwy.		1132' Rdwy.		1136' Rdwy.		1140' Rdwy.		1144' Rdwy.		1148' Rdwy.		1152' Rdwy.		1156' Rdwy.		1160' Rdwy.		1164' Rdwy.		1168' Rdwy.		1172' Rdwy.		1176' Rdwy.		1180' Rdwy.		1184' Rdwy.		1188' Rdwy.		1192' Rdwy.		1196' Rdwy.		1200' Rdwy.		1204' Rdwy.		1208' Rdwy.		1212' Rdwy.		1216' Rdwy.		1220' Rdwy.		1224' Rdwy.		1228' Rdwy.		1232' Rdwy.		1236' Rdwy.		1240' Rdwy.		1244' Rdwy.		1248' Rdwy.		1252' Rdwy.		1256' Rdwy.		1260' Rdwy.		1264' Rdwy.		1268' Rdwy.		1272' Rdwy.		1276' Rdwy.		1280' Rdwy.		1284' Rdwy.		1288' Rdwy.		1292' Rdwy.		1296' Rdwy.		1300' Rdwy.		1304' Rdwy.		1308' Rdwy.		1312' Rdwy.		1316' Rdwy.		1320' Rdwy.		1324' Rdwy.		1328' Rdwy.		1332' Rdwy.		1336' Rdwy.		1340' Rdwy.		1344' Rdwy.		1348' Rdwy.		1352' Rdwy.		1356' Rdwy.		1360' Rdwy.		1364' Rdwy.		1368' Rdwy.		1372' Rdwy.		1376' Rdwy.		1380' Rdwy.		1384' Rdwy.		1388' Rdwy.		1392' Rdwy.		1396' Rdwy.		1400' Rdwy.		1404' Rdwy.		1408' Rdwy.		1412' Rdwy.		1416' Rdwy.		1420' Rdwy.		1424' Rdwy.		1428' Rdwy.		1432' Rdwy.		1436' Rdwy.		1440' Rdwy.		1444' Rdwy.		1448' Rdwy.		1452' Rdwy.		1456' Rdwy.		1460' Rdwy.		1464' Rdwy.		1468' Rdwy.		1472' Rdwy.		1476' Rdwy.		1480' Rdwy.		1484' Rdwy.		1488' Rdwy.		1492' Rdwy.		1496' Rdwy.		1500' Rdwy.		1504' Rdwy.		1508' Rdwy.		1512' Rdwy.		1516' Rdwy.		1520' Rdwy.		1524' Rdwy.		1528' Rdwy.		1532' Rdwy.		1536' Rdwy.		1540' Rdwy.		1544' Rdwy.		1548' Rdwy.		1552' Rdwy.		1556' Rdwy.		1560' Rdwy.		1564' Rdwy.		1568' Rdwy.		1572' Rdwy.		1576' Rdwy.		1580' Rdwy.		1584' Rdwy.		1588' Rdwy.		1592' Rdwy.		1596' Rdwy.		1600' Rdwy.		1604' Rdwy.		1608' Rdwy.		1612' Rdwy.		1616' Rdwy.		1620' Rdwy.		1624' Rdwy.		1628' Rdwy.		1632' Rdwy.		1636' Rdwy.		1640' Rdwy.		1644' Rdwy.		1648' Rdwy.		1652' Rdwy.		1656' Rdwy.		1660' Rdwy.		1664' Rdwy.		1668' Rdwy.		1672' Rdwy.		1676' Rdwy.		1680' Rdwy.		1684' Rdwy.		1688' Rdwy.		1692' Rdwy.
-----------	--	-----------	--	-----------	--	-----------	--	-----------	--	-----------	--	-----------	--	-----------	--	-----------	--	-----------	--	-----------	--	-----------	--	-----------	--	-----------	--	-----------	--	-----------	--	-----------	--	-----------	--	-----------	--	------------	--	------------	--	------------	--	------------	--	------------	--	------------	--	------------	--	------------	--	------------	--	------------	--	------------	--	------------	--	------------	--	------------	--	------------	--	------------	--	------------	--	------------	--	------------	--	------------	--	------------	--	------------	--	------------	--	------------	--	------------	--	------------	--	------------	--	------------	--	------------	--	------------	--	------------	--	------------	--	------------	--	------------	--	------------	--	------------	--	------------	--	------------	--	------------	--	------------	--	------------	--	------------	--	------------	--	------------	--	------------	--	------------	--	------------	--	------------	--	------------	--	------------	--	------------	--	------------	--	------------	--	------------	--	------------	--	------------	--	------------	--	------------	--	------------	--	------------	--	------------	--	------------	--	------------	--	------------	--	------------	--	------------	--	------------	--	------------	--	------------	--	------------	--	------------	--	------------	--	------------	--	------------	--	------------	--	------------	--	------------	--	------------	--	------------	--	------------	--	------------	--	------------	--	------------	--	------------	--	------------	--	------------	--	------------	--	------------	--	------------	--	------------	--	------------	--	------------	--	------------	--	------------	--	------------	--	------------	--	------------	--	------------	--	------------	--	------------	--	------------	--	------------	--	------------	--	------------	--	------------	--	------------	--	------------	--	------------	--	------------	--	------------	--	------------	--	------------	--	------------	--	------------	--	------------	--	------------	--	------------	--	------------	--	------------	--	------------	--	------------	--	------------	--	------------	--	------------	--	------------	--	------------	--	------------	--	------------	--	------------	--	------------	--	------------	--	------------	--	------------	--	------------	--	------------	--	------------	--	------------	--	------------	--	------------	--	------------	--	------------	--	------------	--	------------	--	------------	--	------------	--	------------	--	------------	--	------------	--	------------	--	------------	--	------------	--	------------	--	------------	--	------------	--	------------	--	------------	--	------------	--	------------	--	------------	--	------------	--	------------	--	------------	--	------------	--	------------	--	------------	--	------------	--	------------	--	------------	--	------------	--	------------	--	------------	--	------------	--	------------	--	------------	--	------------	--	------------	--	------------	--	------------	--	------------	--	------------	--	------------	--	------------	--	------------	--	------------	--	------------	--	------------	--	------------	--	------------	--	------------	--	------------	--	------------	--	------------	--	------------	--	------------	--	------------	--	------------	--	------------	--	------------	--	------------	--	------------	--	------------	--	------------	--	------------	--	------------	--	------------	--	------------	--	------------	--	------------	--	------------	--	------------	--	------------	--	------------	--	------------	--	------------	--	------------	--	------------	--	------------	--	------------	--	------------	--	------------	--	------------	--	------------	--	------------	--	------------	--	------------	--	-------------	--	-------------	--	-------------	--	-------------	--	-------------	--	-------------	--	-------------	--	-------------	--	-------------	--	-------------	--	-------------	--	-------------	--	-------------	--	-------------	--	-------------	--	-------------	--	-------------	--	-------------	--	-------------	--	-------------	--	-------------	--	-------------	--	-------------	--	-------------	--	-------------	--	-------------	--	-------------	--	-------------	--	-------------	--	-------------	--	-------------	--	-------------	--	-------------	--	-------------	--	-------------	--	-------------	--	-------------	--	-------------	--	-------------	--	-------------	--	-------------	--	-------------	--	-------------	--	-------------	--	-------------	--	-------------	--	-------------	--	-------------	--	-------------	--	-------------	--	-------------	--	-------------	--	-------------	--	-------------	--	-------------	--	-------------	--	-------------	--	-------------	--	-------------	--	-------------	--	-------------	--	-------------	--	-------------	--	-------------	--	-------------	--	-------------	--	-------------	--	-------------	--	-------------	--	-------------	--	-------------	--	-------------	--	-------------	--	-------------	--	-------------	--	-------------	--	-------------	--	-------------	--	-------------	--	-------------	--	-------------	--	-------------	--	-------------	--	-------------	--	-------------	--	-------------	--	-------------	--	-------------	--	-------------	--	-------------	--	-------------	--	-------------	--	-------------	--	-------------	--	-------------	--	-------------	--	-------------	--	-------------	--	-------------	--	-------------	--	-------------	--	-------------	--	-------------	--	-------------	--	-------------	--	-------------	--	-------------	--	-------------	--	-------------	--	-------------	--	-------------	--	-------------	--	-------------	--	-------------	--	-------------	--	-------------	--	-------------	--	-------------	--	-------------	--	-------------	--	-------------	--	-------------	--	-------------	--	-------------	--	-------------	--	-------------	--	-------------	--	-------------	--	-------------	--	-------------	--	-------------	--	-------------	--	-------------	--	-------------	--	-------------	--	-------------	--	-------------	--	-------------	--	-------------	--	-------------	--	-------------	--	-------------	--	-------------	--	-------------	--	-------------	--	-------------	--	-------------	--	-------------	--	-------------	--	-------------	--	-------------	--	-------------	--	-------------	--	-------------	--	-------------	--	-------------	--	-------------	--	-------------	--	-------------	--	-------------	--	-------------	--	-------------	--	-------------	--	-------------	--	-------------	--	-------------	--	-------------	--	-------------	--	-------------	--	-------------	--	-------------	--	-------------	--	-------------	--	-------------



Technical drawing of a bridge section showing a cross-section of a bridge deck and abutment. The drawing includes dimensions for various components, reinforcement details, and construction notes.

Dimensions:

- Overall width: 25'-6"
- Span length: 15'-0"
- Abutment wall thickness: 1'-0"
- Drainage opening: 1'-0" x 1'-0"
- Reinforcement spacing: 12" in bottom, 20" in top
- Reinforcement diameter: 1/2" to 1 1/2"

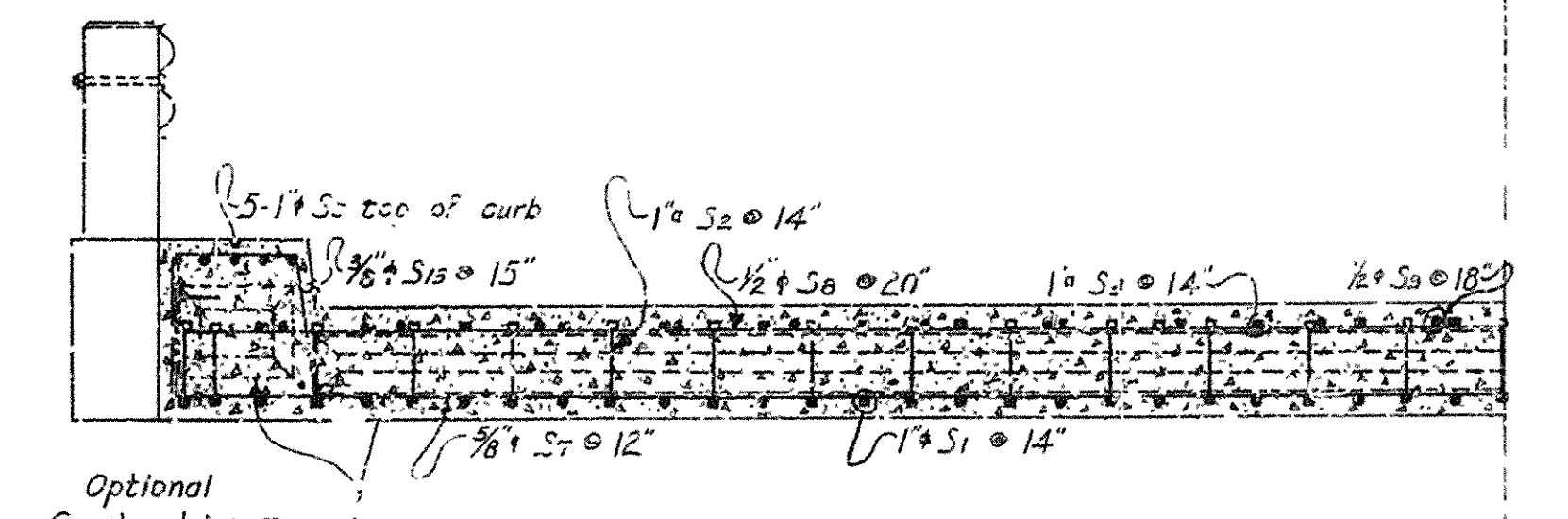
Notes:

- When optional construction joints are used pour both end sections before pouring middle section. Also, chamfer corners 1/2" at constr. joints in slab spans on outside face of curb, top of curb and roadway face of curb.
- Optional Constr. Joint
- 1/2" Ss @ 14" ctrs. in bottom and 1/2" at intermediate supports
- 1 1/2" Ss @ 14" ctrs. in bottom bent up at intermediate supports
- 1/2" Ss @ 18" ctrs. in top
- 1 1/2" Ss @ 14" ctrs. in bottom bent up at intermediate supports
- 1 1/2" Ss @ 18" ctrs. in top
- 1 1/2" Ss @ 14" ctrs. in bottom bent up at intermediate supports
- 1 1/2" Ss @ 18" ctrs. in top
- 1 1/2" Ss @ 14" ctrs. in bottom bent up at intermediate supports
- 1 1/2" Ss @ 18" ctrs. in top

QUARTER PLAN
 $S = a/s = \frac{36}{28} = 1$

[illegible]

HALF SECTION A-A AT ABUTMENTS



HALF SECTION B-B IN END SPANS

Constr. Joint

HALF SECTION B-B IN END SPANS

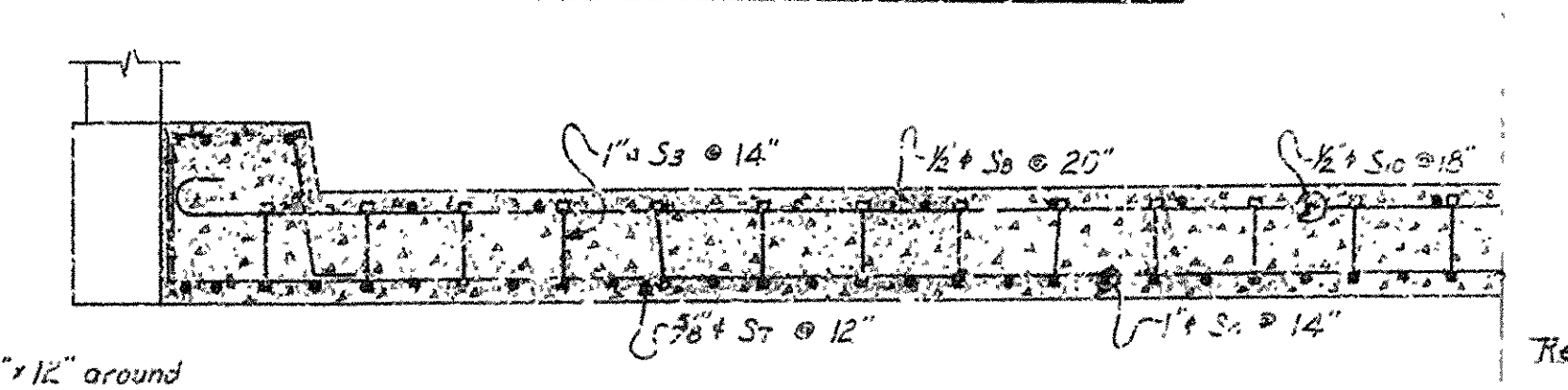
NOTE:
Dimensions of slab not shown are same as for Section A-A.

in
bkt.
t.

$\frac{3}{8}'' \phi$ P0z Ties (4 each post)
 $\frac{5}{8}'' \phi$ P01 (2 each post) } Not a pay item.

$\frac{1}{2}'' \phi S6 @ 20''$
 $\frac{1}{2}'' \phi S2 @ 14''$
 $\frac{1}{2}'' \phi S3 @ 14''$
 $\frac{3}{8}'' \phi S7 @ 12''$
 $\frac{1}{2}'' \phi S1 @ 14''$
 $\frac{1}{2}'' \phi S4 @ 14''$

HALF SECTION C-C NEAR PIERS



HALF SECTION D-D IN CENTER SPAN



SECTION OF RAIL
Scale: $1\frac{1}{2}$ " = 1'-0"

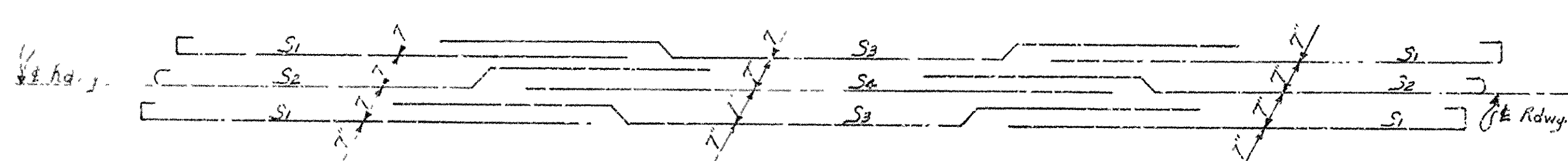


DIAGRAM SHOWING ARRANGEMENT OF MAIN LONGITUDINAL REINFORCING BARS IN ALTERNATE ROWS

[illegible][illegible]

Revisions:

Pouring sequence 1 PC 6-23-52
Include 24'-0" Clear Rowwy CRB 2-23-52

DETAILS OF STANDARD 8'-0"
THREE SPAN CONTINUOUS R.C. SLAB
SPAN LENGTHS 25'-6"-30'-0"-25'-6"
28'-0" CLEAR ROWY. 2 CURBS @ 1'-6"
24'-0" CLEAR ROWY. 2 CURBS @ 1'-6"

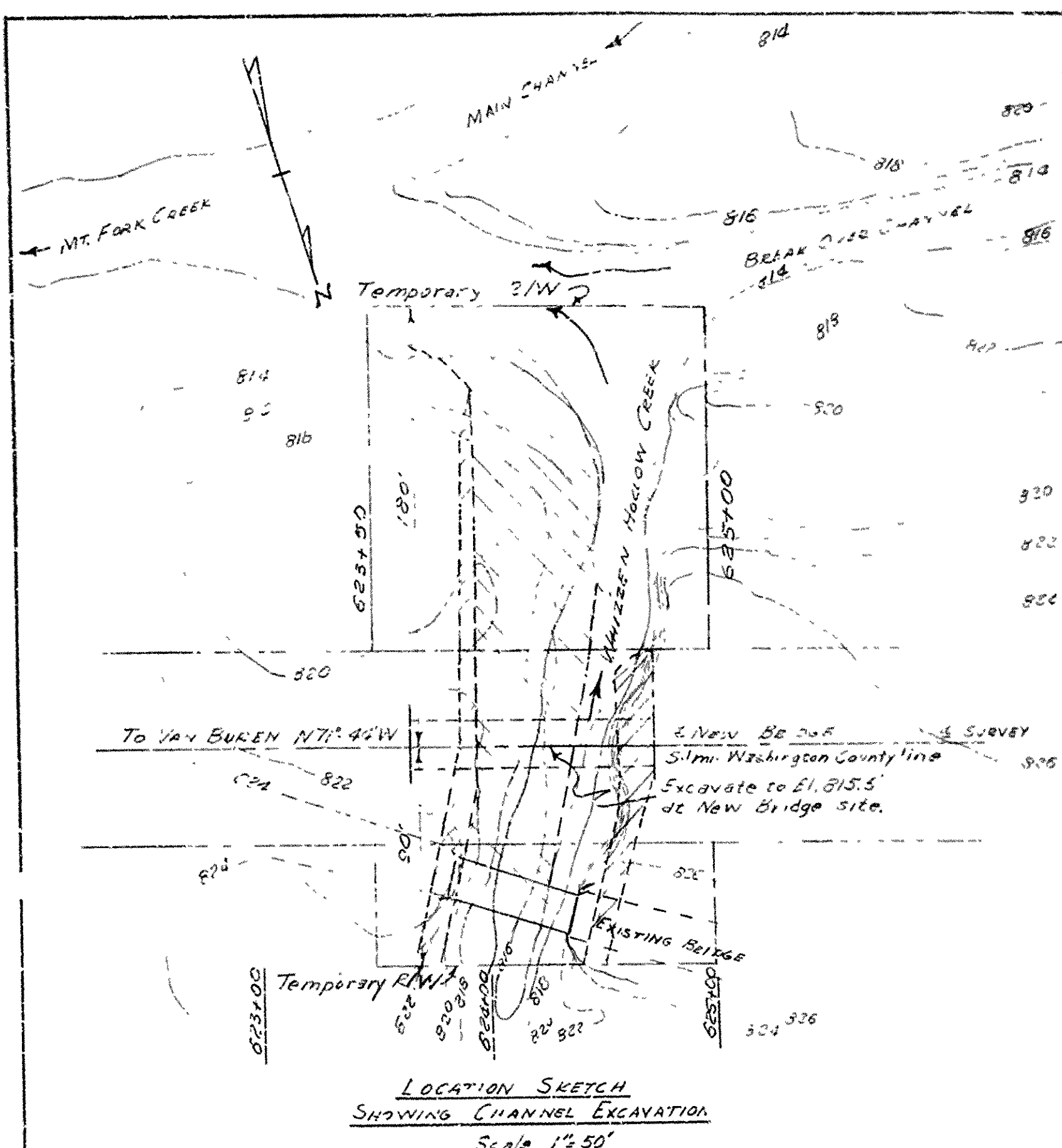
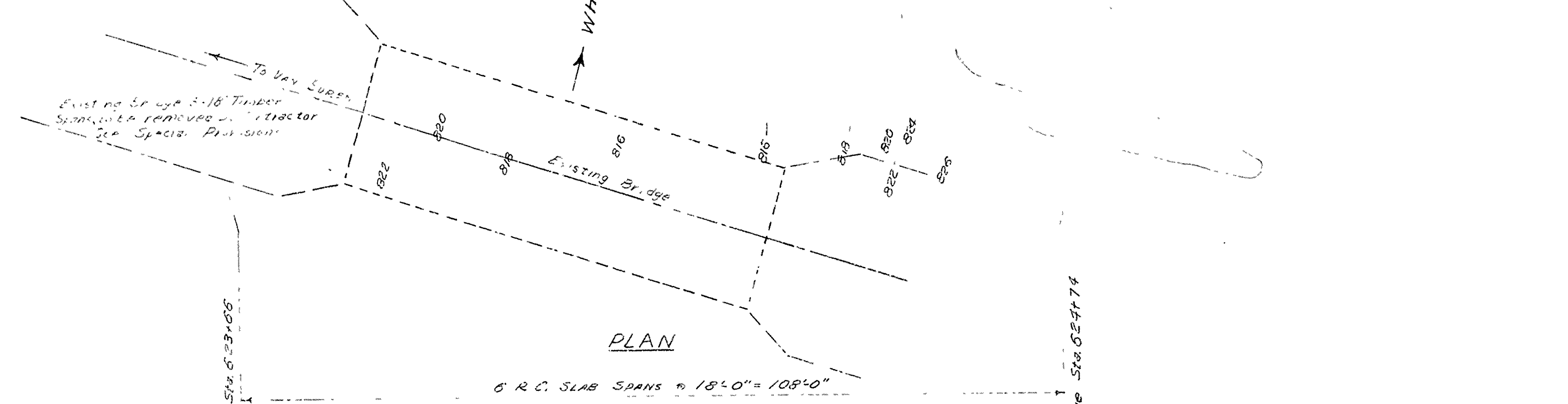
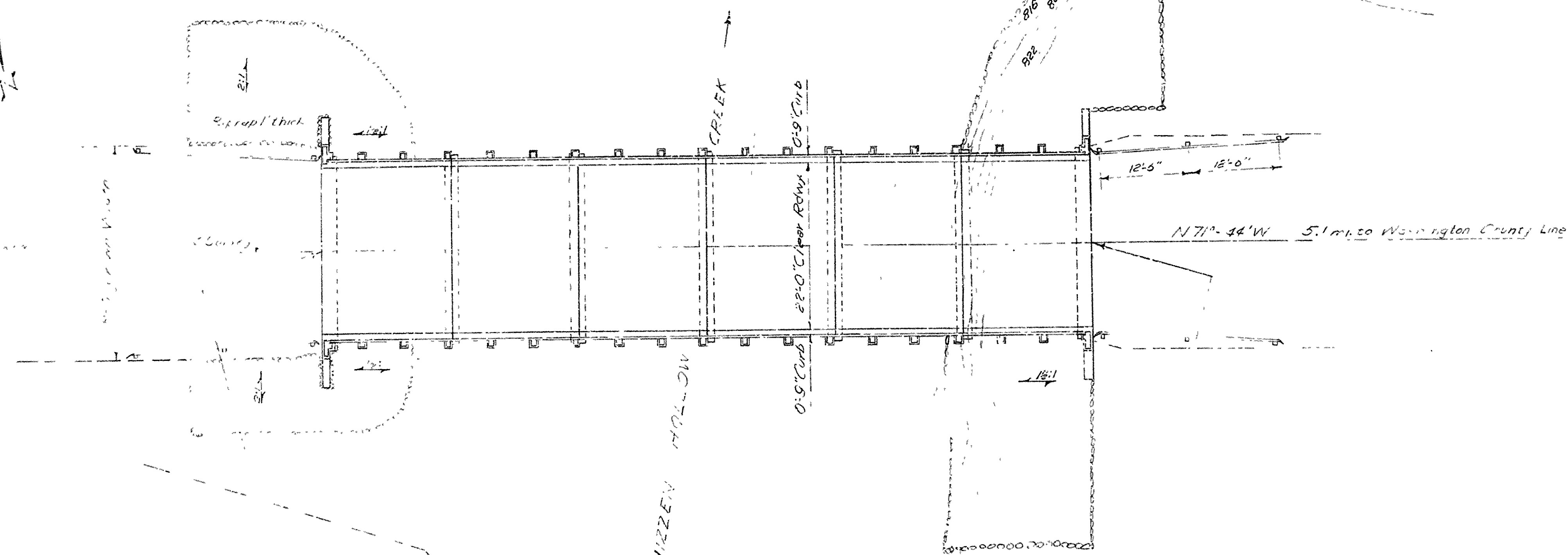
ARKANSAS STATE HIGHWAY COMMISSION
LITTLE ROCK, ARK.

Drawn By: E.S. Date: 4-12-51
Traced By: Date:
Checked By: J.H.K. Date: 4-30-51

Scale: 1" = 1'-0"
Except as noted

DRAWING NO. 338A

6 5333 (9) 18 87
Sta 6 4374

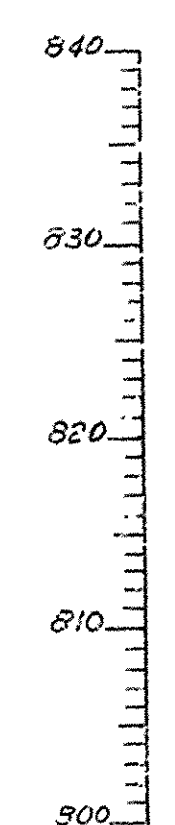


GENERAL NOTES:
S.M. Nail in root at 10' e/m 120' R/L -
Sta 526+00 Elev. 830.77'
For Details see Drawg. No. 5303-C/P
Loadings: H-15 (AASHO Revised 1949)
STRESSES:
Class "S" Conc. 1200#¹/₂" n=10
Class "A" Conc. 820#¹/₂" n=15
Reinf. Steel 20,000#¹/₂"

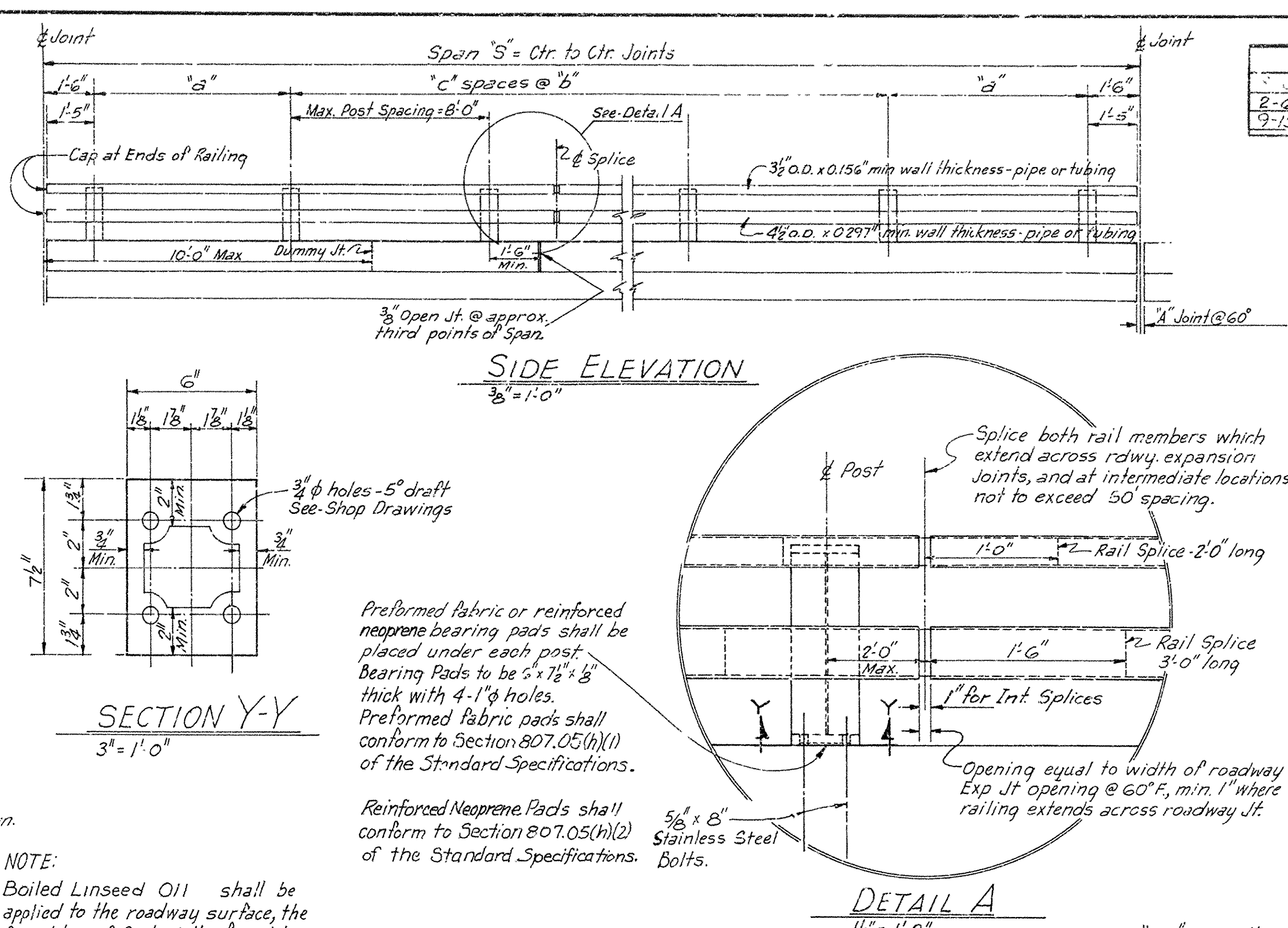
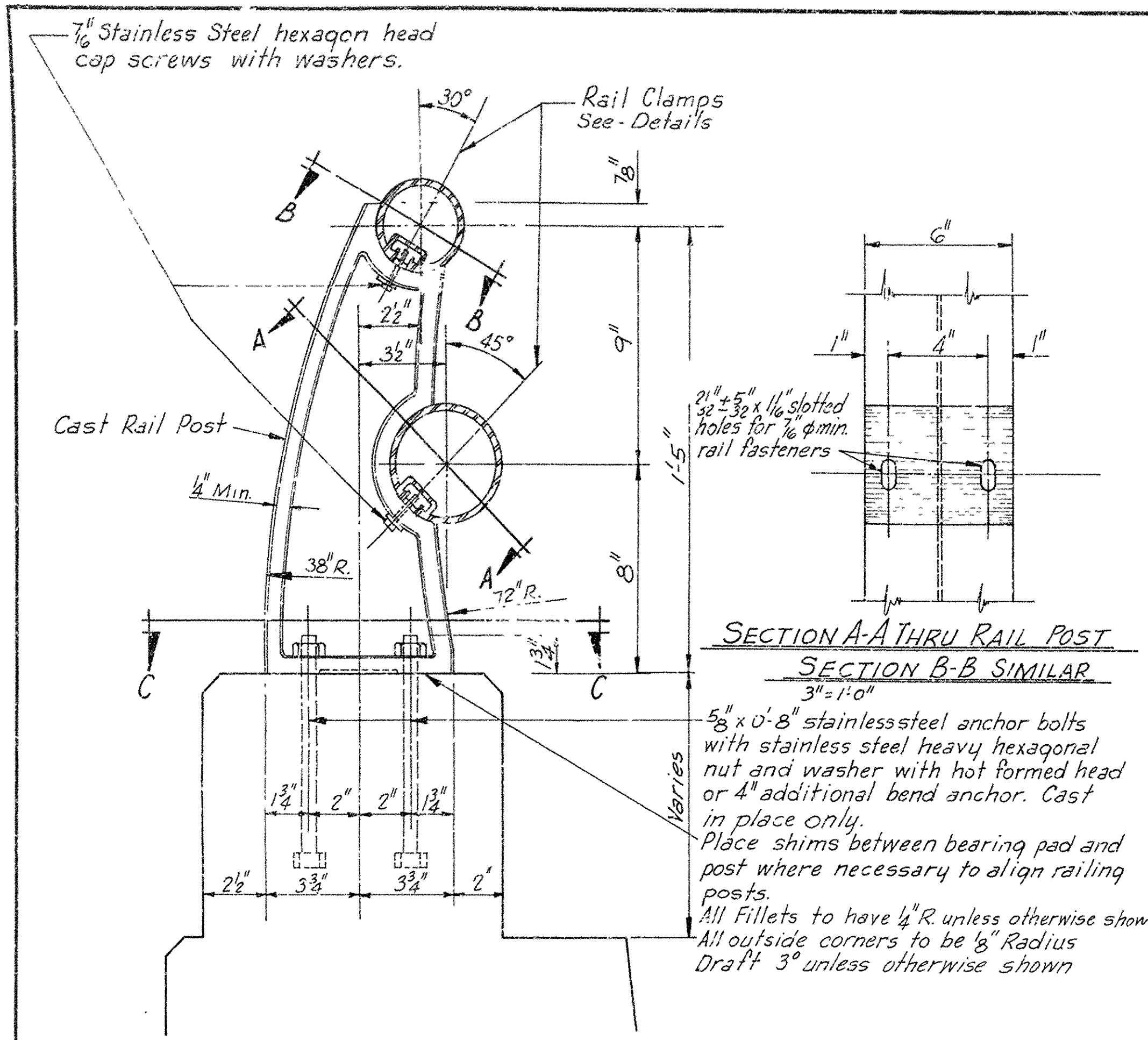
LAYOUT OF
BRIDGE OVER WHIZZELL HOLLOW CREEK
HUEY CREEK - NORTH
CRAWFORD COUNTY
ROUTE 59 SEC. 5

ARKANSAS STATE HIGHWAY COMMISSION
LITTLE ROCK, ARK.

Drawn By: E.S.S. Date: 8-8-51
Traced By: Date: 8-9-51
Checked By: Date: 8-9-51
BRIDGE No. 2813 DRAWING No. 8028



D.A. 6.5' min.
C = 1.25



FED. ROAD NO.	STATE	FED. AID PROJ.	FISCAL YEAR	SHEET NO.	TOTAL SHEETS
2-6-70	ARK.	547-2-6-70	7-15-88	502-1-16-83	
9-15-78	ARK.	324-1-10-84	11-2-90	11-5-90	

JOB NO. 14992A

GENERAL NOTES

Metal railing including posts and fasteners shall be paid for at the unit price bid for Metal Bridge Railing (Type A). This railing system is for installation on parapet walls only. For details of parapet walls, see span drawings. Parapet walls will be paid for at unit prices bid for concrete and reinforcing steel.

Railing components may be either aluminum or steel. Stainless steel fasteners may be used on either aluminum or steel systems. Other than the exceptions noted herein and in the Material Data, no mixing of aluminum and steel parts is permitted. For lists of material designations & specifications of various parts, see Material Data.

Uniform section steel or aluminum tubing or pipe of equivalent strength and wall thickness with approved fasteners may be submitted for approval. Toggle bolt fasteners 1/2" dia. with 1/2" toggle pin may be used to attach uniform sections to posts.

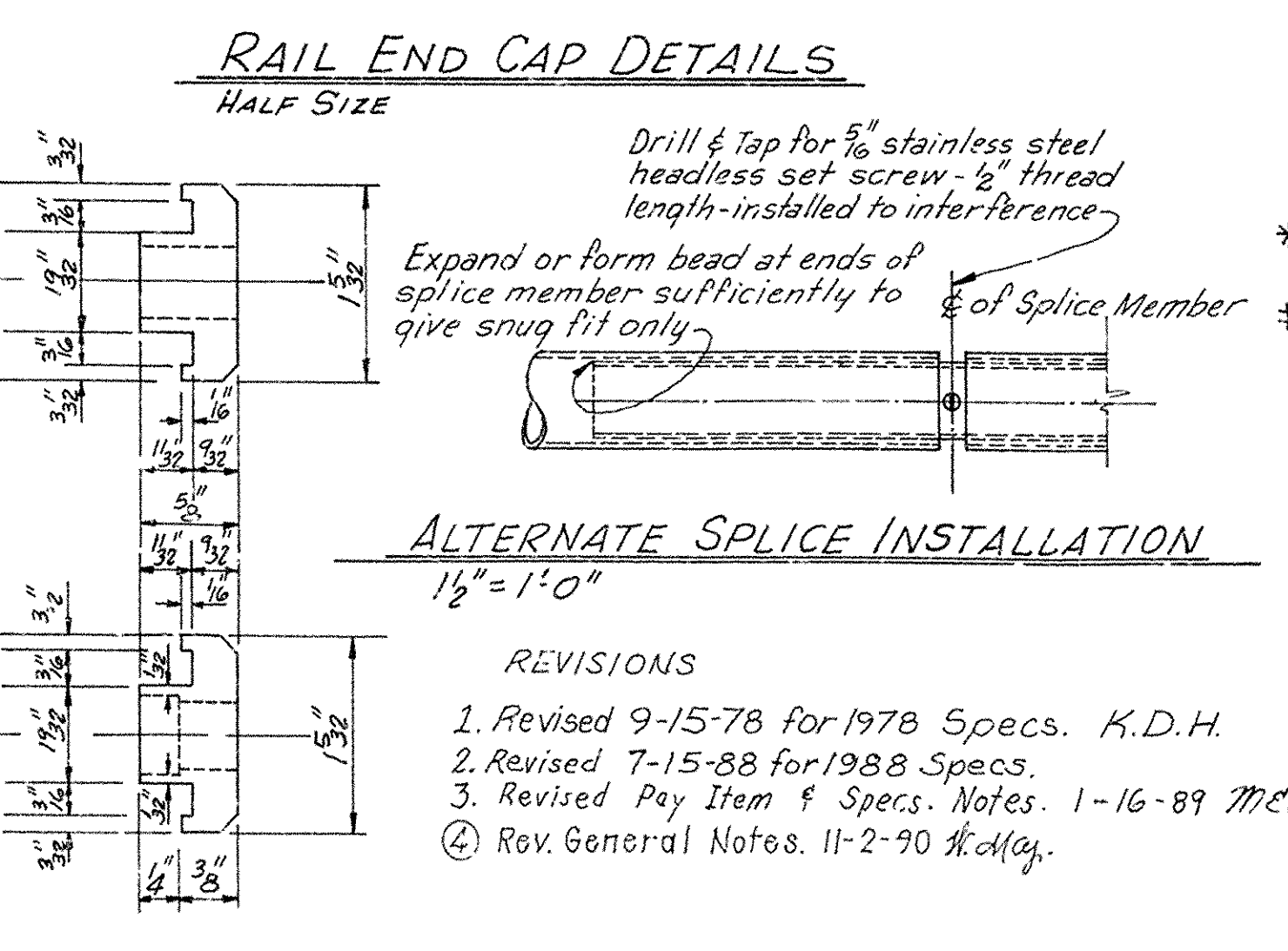
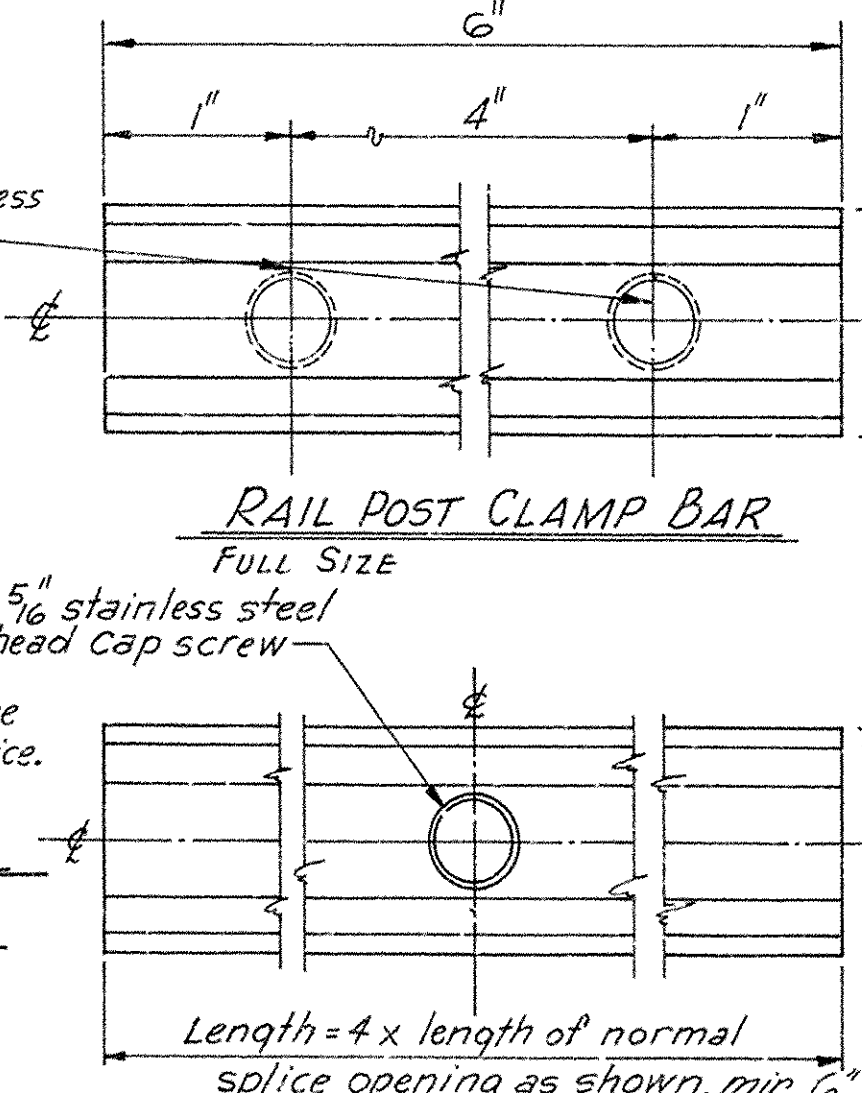
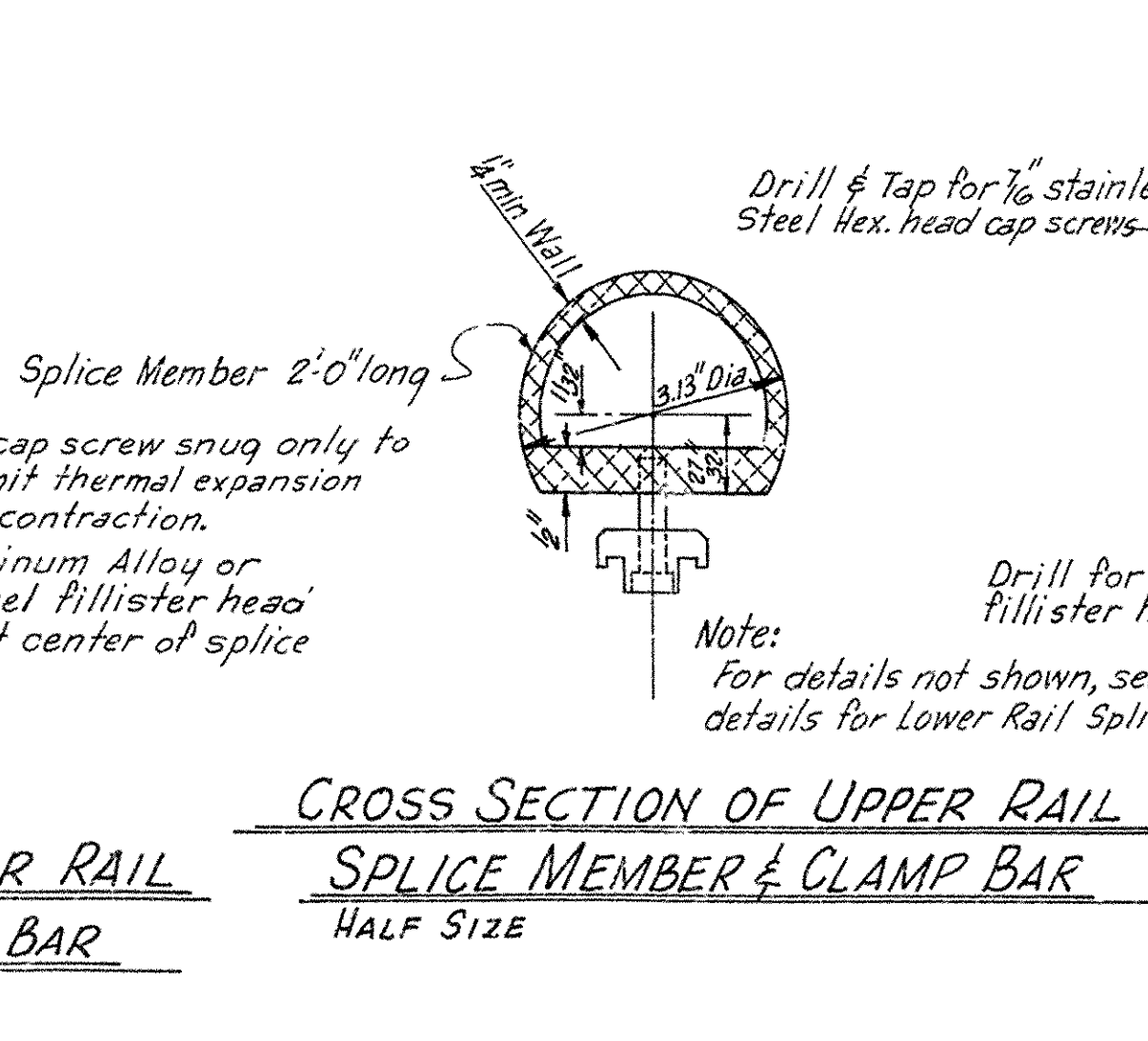
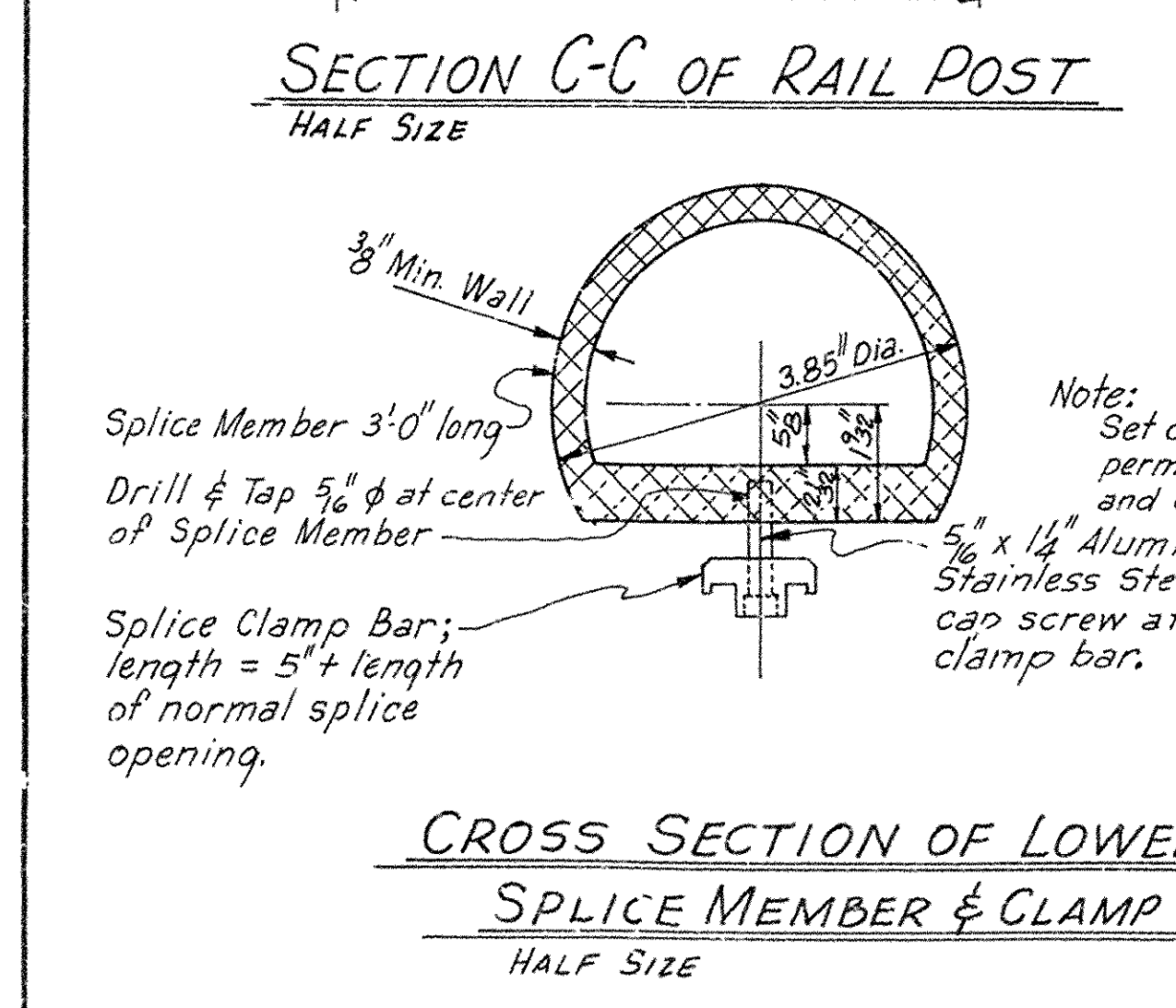
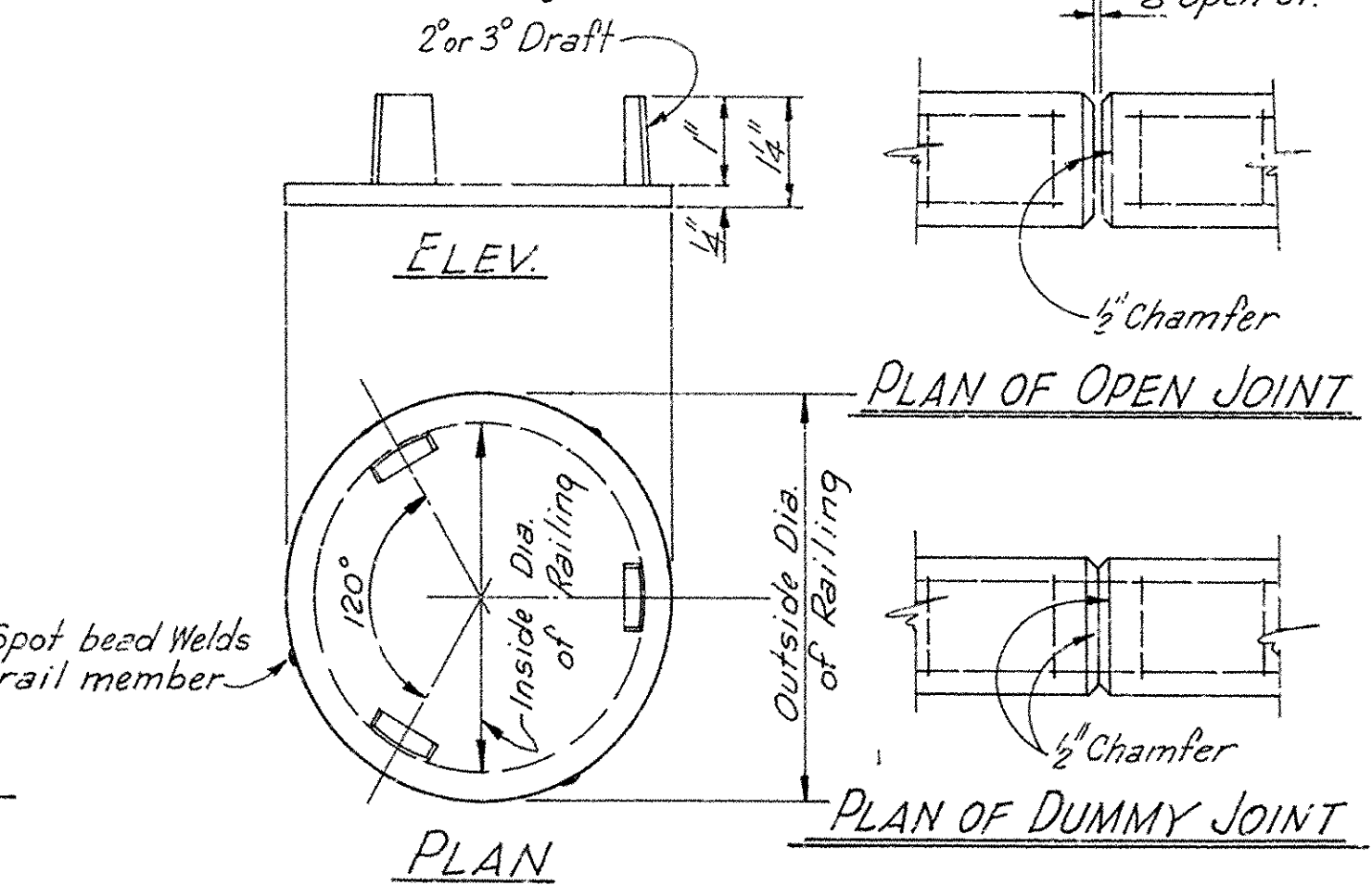
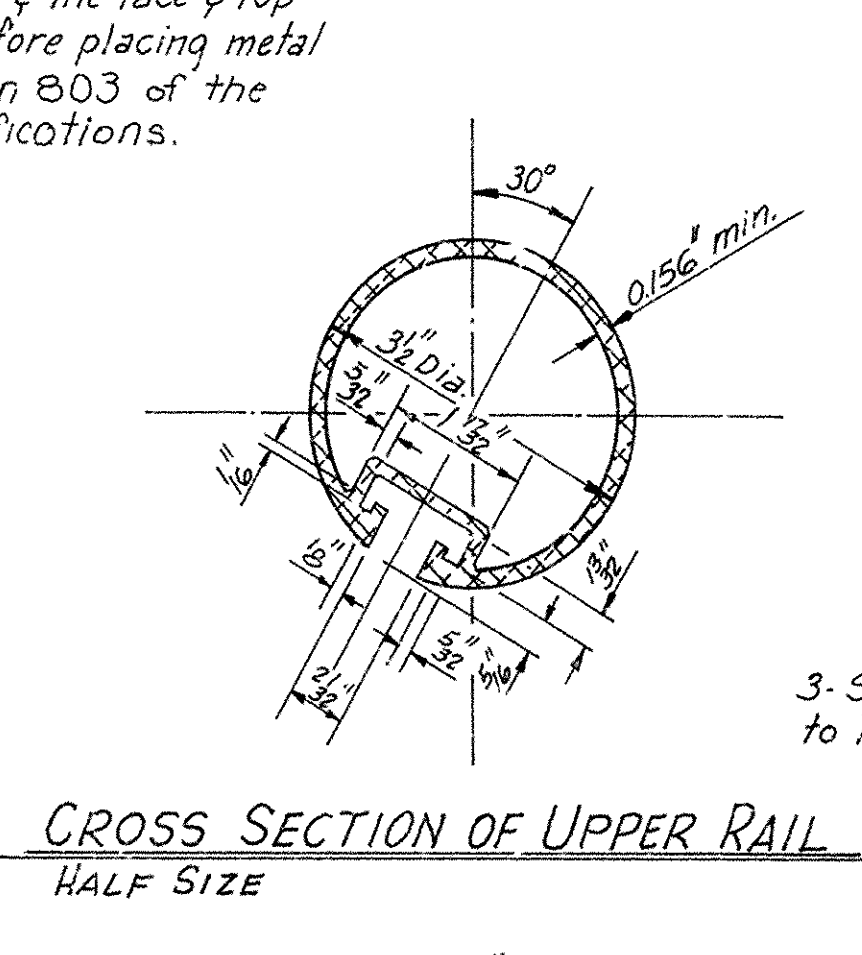
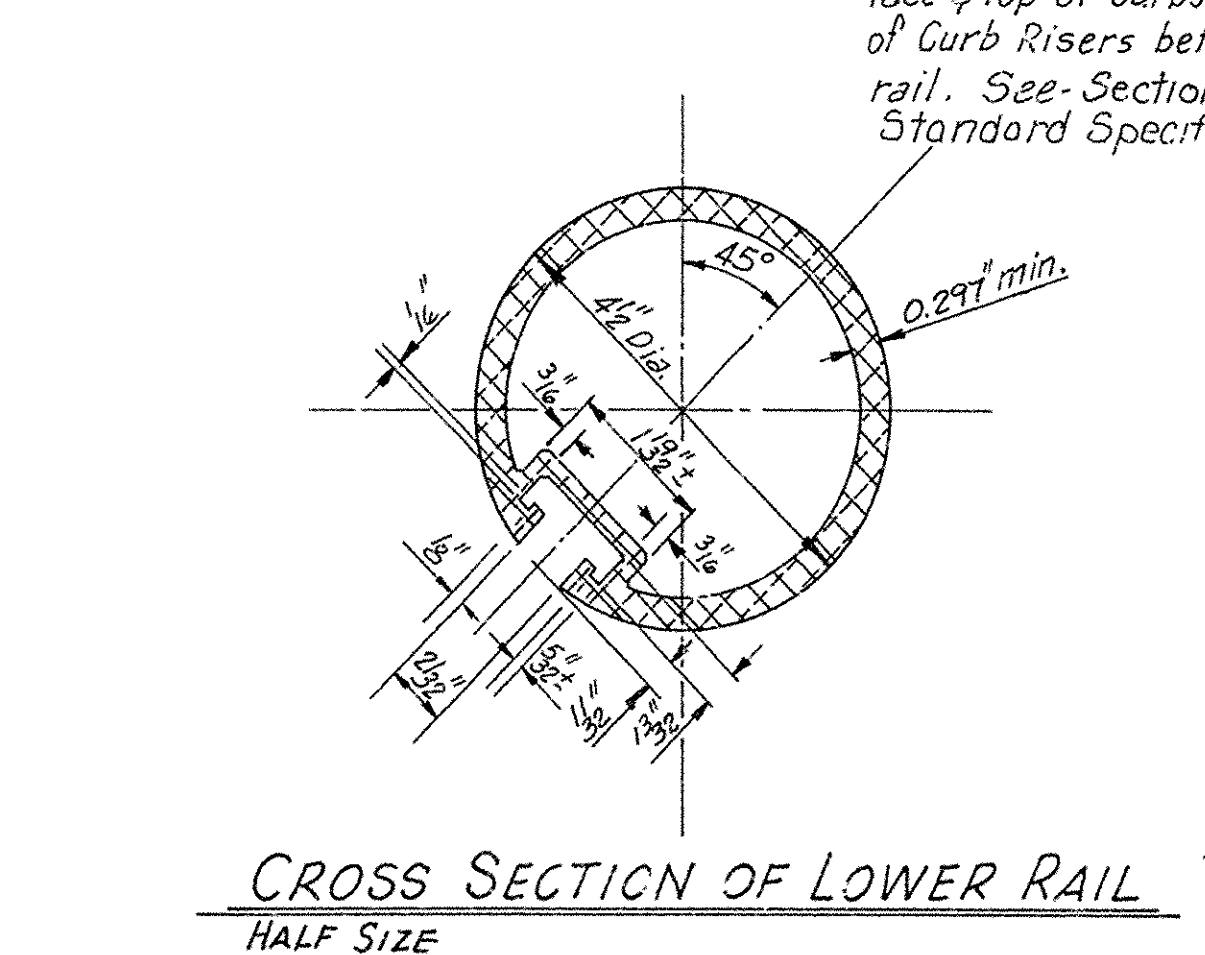
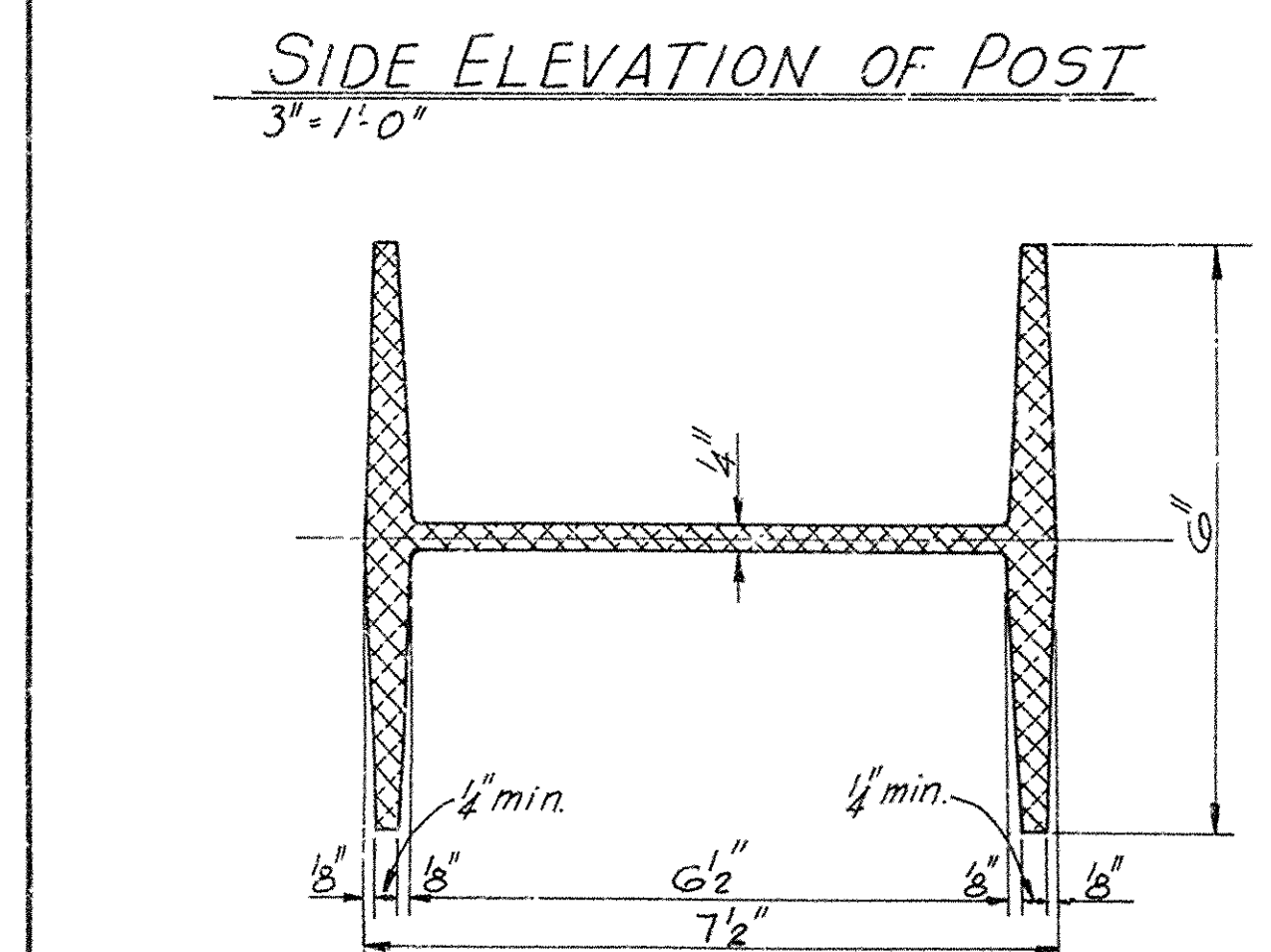
Rail tubes, pipes or extrusions must be fabricated to attach to at least three posts. Shop drawings of railing shall be submitted and approval secured before fabrication is begun.

Steel rail members shall be galvanized in accordance with ASTM A123 after fabrication. Steel fasteners other than stainless steel shall be galvanized according to ASTM 153, or B695 Class 40 or 50. SPECIFICATIONS: Arkansas State Highway and Transportation Department Standard Specifications for Highway Construction, Edition 4) of 1991, with applicable Special Provisions and Supplemental Specifications.

MATERIAL DATA

PART	ALUMINUM		STEEL	
	Alloy	Specification	Grade	Specification
TUBING	6061-T6	ASTM B221		ASTM A36 ASTM A501
PIPE	6061-T6	ASTM B241	B	ASTM A36 ASTM A501
EXTRUSIONS	6061-T6	ASTM B221		
RAILING END CAPS	356-F	ASTM B26	70-40	ASTM A27
	356-F	ASTM B108		ASTM A36
CAST RAIL POSTS	A444-T4	ASTM B108	70-40	ASTM A27
ANCHOR BOLTS & RAIL CLAMP SCREWS	Same as for Steel Railing		B8 ±	ASTM A193
			B8 ±	ASTM A320
WASHERS	Same as for Steel Railing			ASTM A276(302) ASTM A167(302)
* NUTS	Same as for Steel Railing		B	ASTM A194
TOGGLE BOLT ASSEMBLY	The entire assembly shall be capable of withstanding a tensile load of 9000 pounds applied through a 1" hole. The materials for components will be specified by recognized ASTM designations on shop drawings submitted for approval, and will be accepted by manufacturer's certification on approval by the engineer.			

* Threads on bolts, screws and nuts shall conform to American Standard coarse Series, Class 2A for screws, Class 2B for nuts, Fit ASA B11.
± Minimum yield strength - 80,000 psi



REVISIONS

1. Revised 9-15-78 for 1978 Specs. K.D.H.
2. Revised 7-15-88 for 1988 Specs.
3. Revised Pay Item & Specs. Notes. 1-16-89 MEC
4. Rev. General Notes. 11-2-90 H.C.G.

DETAILS OF METAL BRIDGE RAILING

TYPE A

ROUTE SEC.
ARKANSAS STATE HIGHWAY COMMISSION
LITTLE ROCK, ARK.

DRAWN BY: J.S. DATE: 2-3-68
TRACED BY: DATE: 3-2-80
CHECKED BY: J.E.M. DATE: 3-2-80
BRIDGE NO. DRAWING NO. 14992A

L. J. Carlson
BRIDGE ENGINEER

DATE REVISED	DATE FILMED	DATE REVISED	DATE FILMED	FILE NO.	STATE	FILE NO.	STATE	FILE NO.	STATE
				6	ARK	7-55-1171, 17			

① 2809AR-2810R QUANT. SHT. 19217

SCHEDULE OF BRIDGE QUANTITIES

BRIDGE NO.	CODE NO.	NAME	PLATE TITLE	UNIT OF STRUCTURE	ITEM NO.	501	SP # 502	SP # 802	803	804	804	*SP # 805	806	812	SP JOB 11864
					ITEM	COMMON EXCAVATION FOR STRUCTURES - BRIDGE	CLASS "S" CONCRETE	CLASS "S (AE)" CONCRETE	BOILED LINSEED OIL	REINFORCING STEEL (GRADE 40)	REINFORCING STEEL (GRADE 60)	PRECAST CONCRETE PILING (16" OCT)	METAL BRIDGE RAILING (TYPE A)	BRIDGE NAME PLATES (TYPE C)	REMODELING EXISTING BRIDGES
					CU. YD.	CU. YD.	CU. YD.	GAL.	LB.	LB.	LIN. FT.	LIN. FT.	EACH	LUMP SUM	
2809R	1020	BIG CREEK		END BENTS 1 & 7	32	6.66				1116		208			
				INTERIOR BENTS 2-6		10.44				2144		580			
				2-81'0" CONT. R.C. SLAB UNITS			311.50	16.2		35460		319.0	1		
				TOTAL FOR BRIDGE 2809R	32	17.10	311.50	16.2	3260	35460	788	319.0	1	0.33	
2809AR	1020	BIG CREEK		END BENTS 1 & 7	32	6.66				1116		208			
				INTERIOR BENTS 2-6		10.44				2144		580			
				2-81'0" CONT. R.C. SLAB UNITS			311.50	16.2		35460		319.0	1		
				TOTAL FOR BRIDGE 2809AR	32	17.10	311.50	16.2	3260	35460	788	319.0	1	0.33	
2810R	1021	DRY BAYOU		END BENTS 1 & 4	32	6.66				1116		140			
				INTERIOR BENTS 2 & 3		4.14				854		140			
				81'0" CONT. R.C. SLAB UNIT			156.10	8.1		17830		157.0	1		
				TOTAL FOR BRIDGE 2810R	32	10.80	156.10	8.1	1970	17830	280	157.0	1	0.17	
2810AR	1021	DRY BAYOU		END BENTS 1 & 4	32	6.66				1116		140			
				INTERIOR BENTS 2 & 3		4.14				854		140			
				81'0" CONT. R.C. SLAB UNIT			156.10	8.1		17830		157.0	1		
				TOTAL FOR BRIDGE 2810AR	32	10.80	156.10	8.1	1970	17830	280	157.0	1	0.17	
TOTAL FOR JOB 11864					128	55.80	935.20	43.6	10460	106580	2136	952.0	4	1.00	

* SP REFERS TO SP 802-5

SCHEDULE OF BRIDGE QUANTITIES
CLARKDALE - MISS. CO. LINE RECONST.
CRITTENDEN COUNTY
ROUTE 55 SEC. 11
ARKANSAS STATE HIGHWAY COMMISSION
LITTLE ROCK, ARK.

DRAWN BY: JCK DATE: 2-26-75
CHECKED BY: JCK DATE: 2-27-75
DESIGNED BY: JCK DATE: 2-26-75
SCALE: None
BRIDGE NO. 2809AR, 2809R, 2810AR & 2810R DRAWING NO. 19217

David P. Puckett
BRIDGE ENGINEER

DATE REVISED	DATE FILMED	DATE REVISED	DATE FILMED	FED. ROAD NO.	STATE	FED. AID PROJ. NO.	SHEET NO.	TOTAL SHEETS
				6	ARK.	I-55-1(7)17	11	82
JOB NO. 11864								
① 2809AR, 2809R LAYOUT 19218								

GENERAL NOTES

BENCH MARK: "C" CUT ON DROP INLET 2' LT. STA. 912+62. ELEV. 219.91.

ALL PILING SHALL BE 16" OCTAGONAL PRECAST CONCRETE AND SHALL BE DRIVEN WITH AN APPROVED AIR, STEAM, OR DIESEL HAMMER TO A MINIMUM BEARING CAPACITY OF 44 TONS PER PILE AND TO A MINIMUM PENETRATION OF 20" BELOW THE GROUND LINE. LENGTHS OF PILING SHOWN ARE BASED ON PILING DRIVEN IN THE EXISTING BRIDGE NO. 2809A.

ALL CONCRETE IN THE SUPERSTRUCTURE SHALL BE CLASS 5 (A1). ALL CONCRETE IN THE SUBSTRUCTURE SHALL BE CLASS 5 AND SHALL BE POURED IN THE DRY. ALL EXPOSED CORNERS SHALL BE CHAMFERED 3/4" UNLESS OTHERWISE NOTED.

THE CONTRACTOR SHALL MAKE CHECK MEASUREMENTS OF THE EXISTING BRIDGE AND MAKE ADJUSTMENTS NECESSARY TO FIT THE NEW WORK TO THE EXISTING STRUCTURE.

PLANS OF THE EXISTING STRUCTURE WILL BE MADE AVAILABLE TO THE CONTRACTOR UPON REQUEST. FOR PLANS OF EXISTING STRUCTURE, SEE DWG. NOS. 5385, 5386, 8012 & 8870. FOR DETAILS OF WIDENING BENTS, SEE DWG. NO. 19219 & 19220. FOR DETAILS OF WIDENING SPANS, SEE DWG. NOS. 19221 & 19222.

SPECIFICATIONS: ARKANSAS STATE HIGHWAY COMMISSION STANDARD SPECIFICATIONS FOR HIGHWAY CONSTRUCTION, EDITION OF 1972 AND APPLICABLE SPECIAL PROVISIONS.

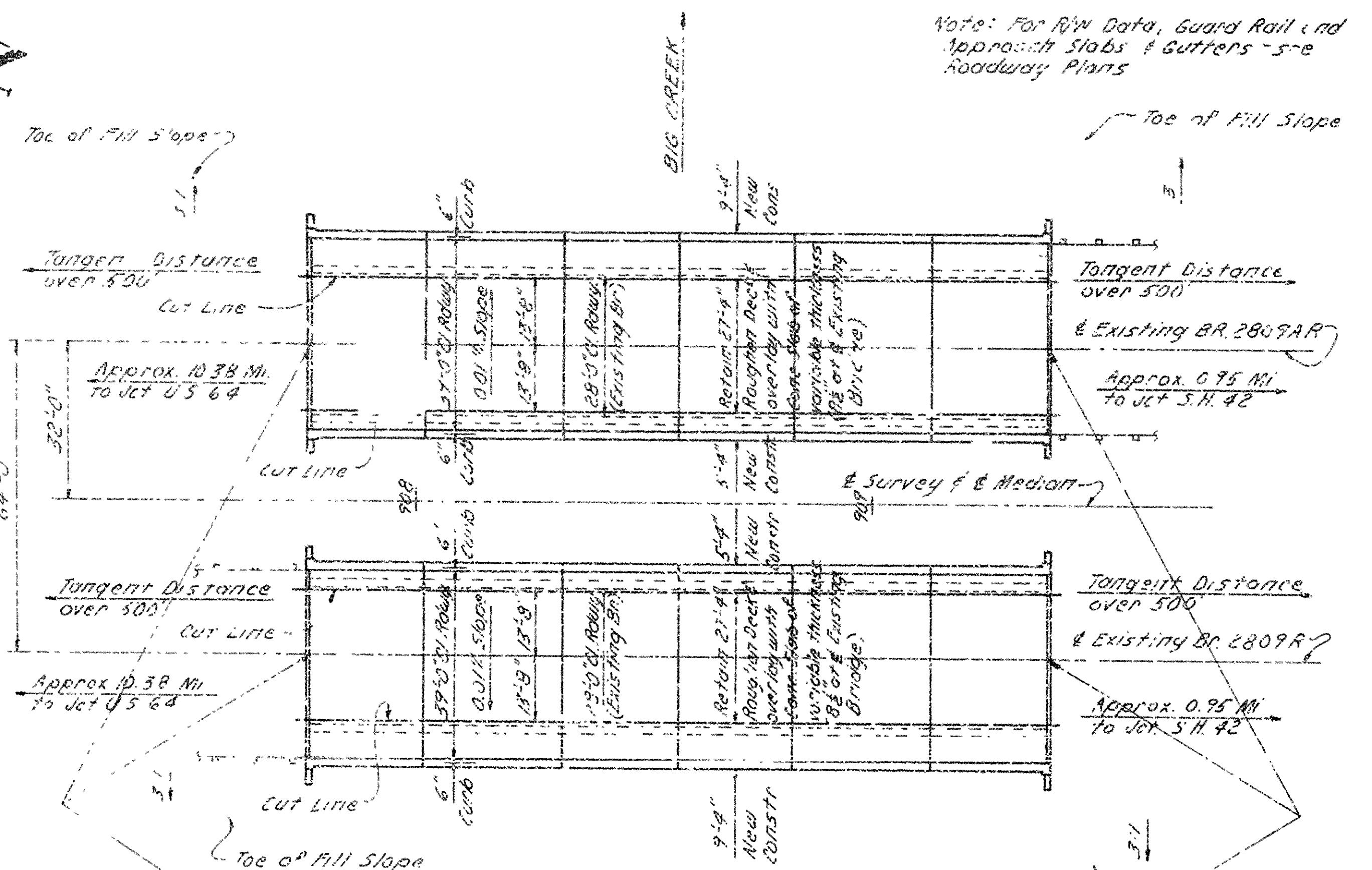
DESIGN SPECIFICATIONS: AASHTO 1973

LIVE LOADING: HS 20 AND SPECIAL INTERSTATE LOADING

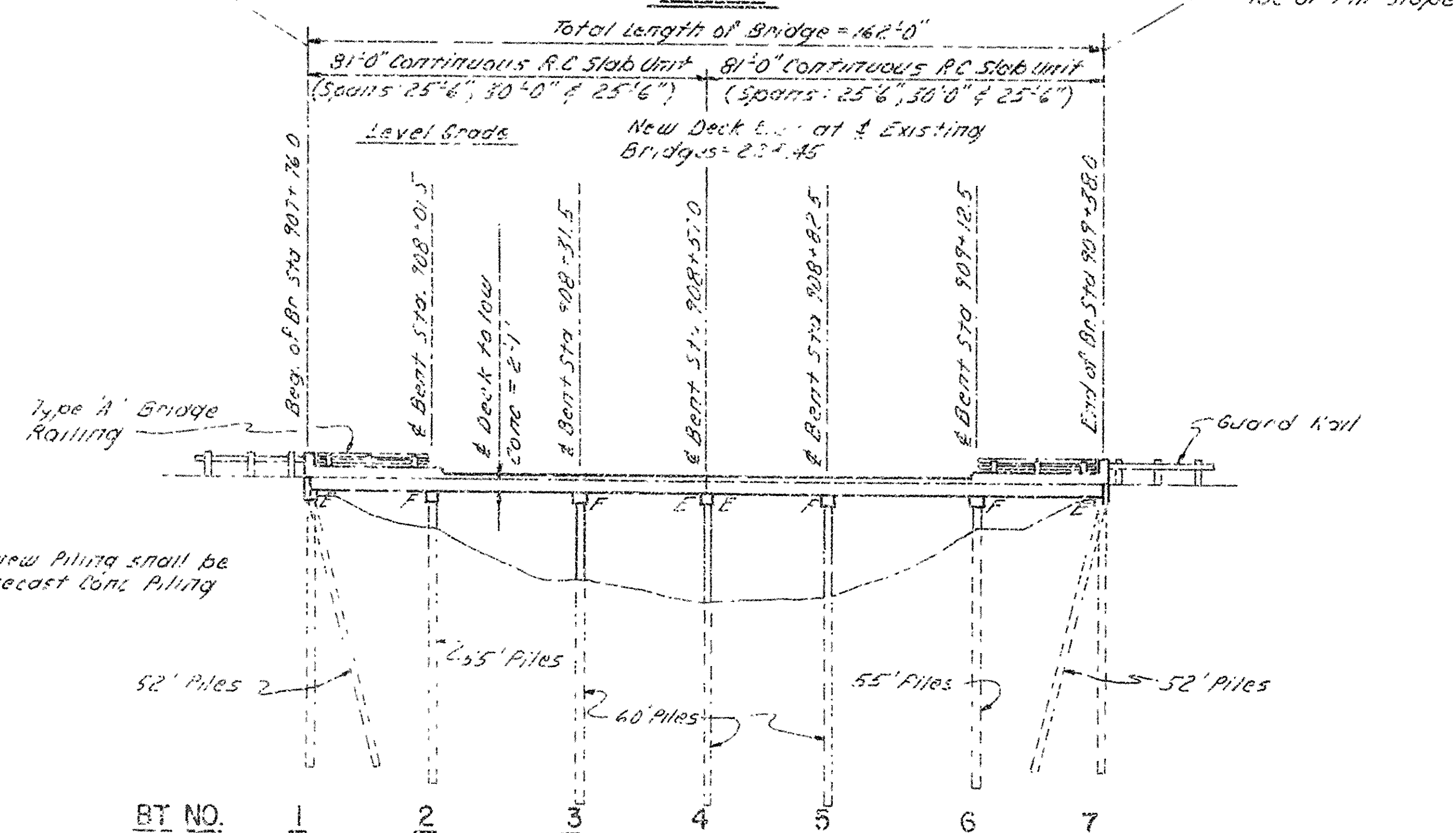
UNIT STRESSES:
SUPERSTRUCTURE: CLASS 5 (A1) CONCRETE (N=10) 1,400 PSI
REINFORCING STEEL (A615, GRADE 60) 24,000 PSI

SUBSTRUCTURE: CLASS 5 CONCRETE (N=10) 1,200 PSI
REINFORCING STEEL (A615, GRADE 40) 20,000 PSI

THE EXISTING PLATE GUARD RAIL IS TO BE SALVAGED AND SHALL REMAIN THE PROPERTY OF THE STATE.



PLAN



ELEVATION

Note: All new Piling shall be 16" Oct. Precast Conc. Piling

LAYOUT OF BRIDGES OVER
BIG CREEK
CLARKDALE-MISS. CO. LINE RECONST.
CRITTENDEN COUNTY
ROUTE 55 SEC. 11
ARKANSAS STATE HIGHWAY COMMISSION
LITTLE ROCK, ARK.
DRAWN BY: J.P.S. DATE: 2-14-75
CHECKED BY: JCK DATE: 2-26-75
DESIGNED BY: JCK DATE: 2-7-75
SCALE: 1" = 20'-0"
BRIDGE NO. 2809AR & 2809R
DRAWING NO. 19218

DATE REVISED	DATE FILMED	DATE REVISED	DATE FILMED	REV. NO.	STATE	FED. AID PROJ. NO.	SHEET NO.	TOTAL SHEETS
				6	ARK	I-55-1(71)17	13	83
				JOB NO. 11864				
				2809R & 2809AR - BENT DTLS - 19220				

BAR LIST - PER BENT

MARK	NO.	REQ'D	LENGTH	PIN DIA.	BENDING DIAGRAMS
B401	23	8'-10"	2"		
B402	6	6'-2"	2"		
B403	8	3'-11"	5/8"		
B404	10	2'-11"	5/8"		
B405	12	4'-6"	5/8"		
B406	8	4'-4"	5/8"		
B407	2	3'-2"	5/8"		
B408	E	7'-2"	5/8"		
B601	5	7'-10"	4 1/2"		
B602	6	7'-0"	3 3/4"		
B603	5	4'-6"	4 1/2"		
B604	6	5'-0"	3 3/4"		
B701	16	2'-0"	5/8"		

GENERAL NOTES

STRIP, CLEAN, AND RETAIN EXISTING WINGWALL REINFORCEMENT EXTENDING FROM THE EXISTING END BENT CAP INTO THE NEW CAP A MINIMUM OF 2'-0"

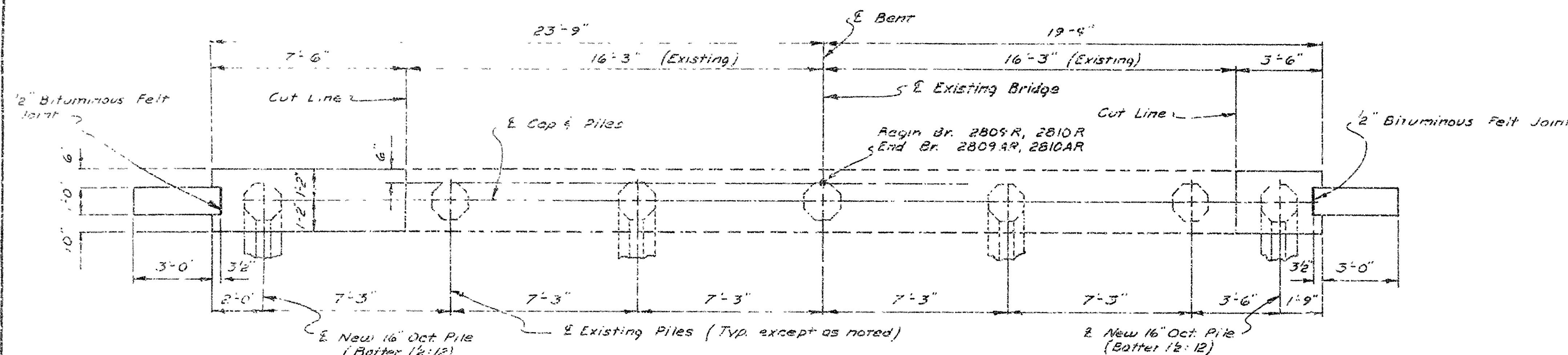
ALL NEW CONCRETE IN THE SUBSTRUCTURE WILL BE CLASS S. ALL EXPOSED CORNERS WILL BE CHAMFERED 3/4" UNLESS OTHERWISE NOTED.

NEW REINFORCING SHALL BE ASTM A615, GRADE 40. SHOP LISTS AND BENDING DIAGRAM'S MUST BE SUBMITTED AND APPROVAL SECURED BEFORE FABRICATION IS BEGUN.

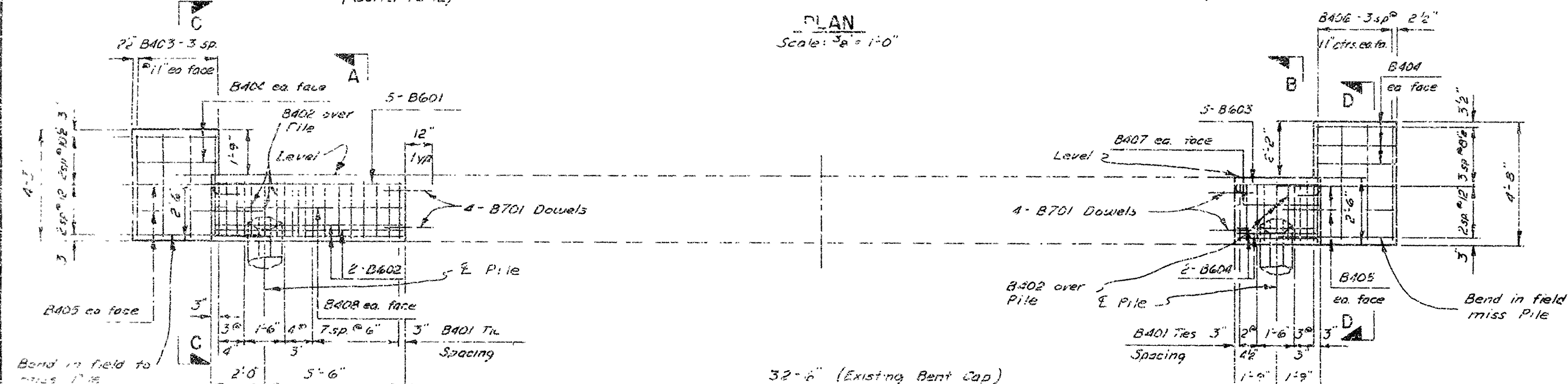
IN GENERAL, ALL CONSTRUCTION JOINTS SHALL BE HORIZONTAL AND PROVIDED WITH KEYS NOT LESS THAN 1-1/2" HIGH COVERING THE MIDDLE THIRD OF BOTH DIMENSIONS.

FOR ADDITIONAL GENERAL NOTES, SEE BRIDGE LAYOUT DRAWING NO. 19218 OR 19223

UNIT STRESSES: CLASS S CONCRETE (N=10) 1,200 PSI
REINFORCING STEEL (A615-40) 20,000 PSI

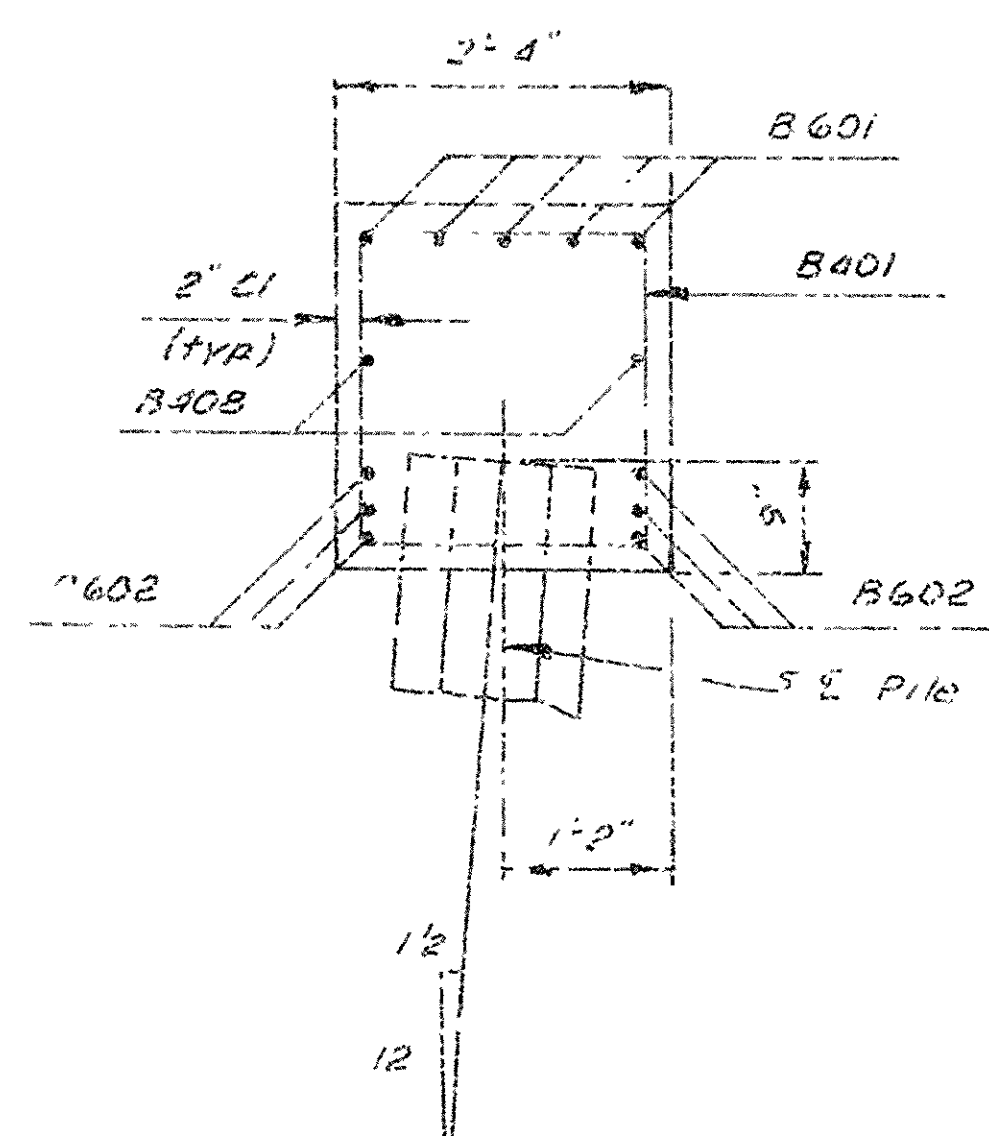


PLAN
Scale: 3/8" = 1'-0"

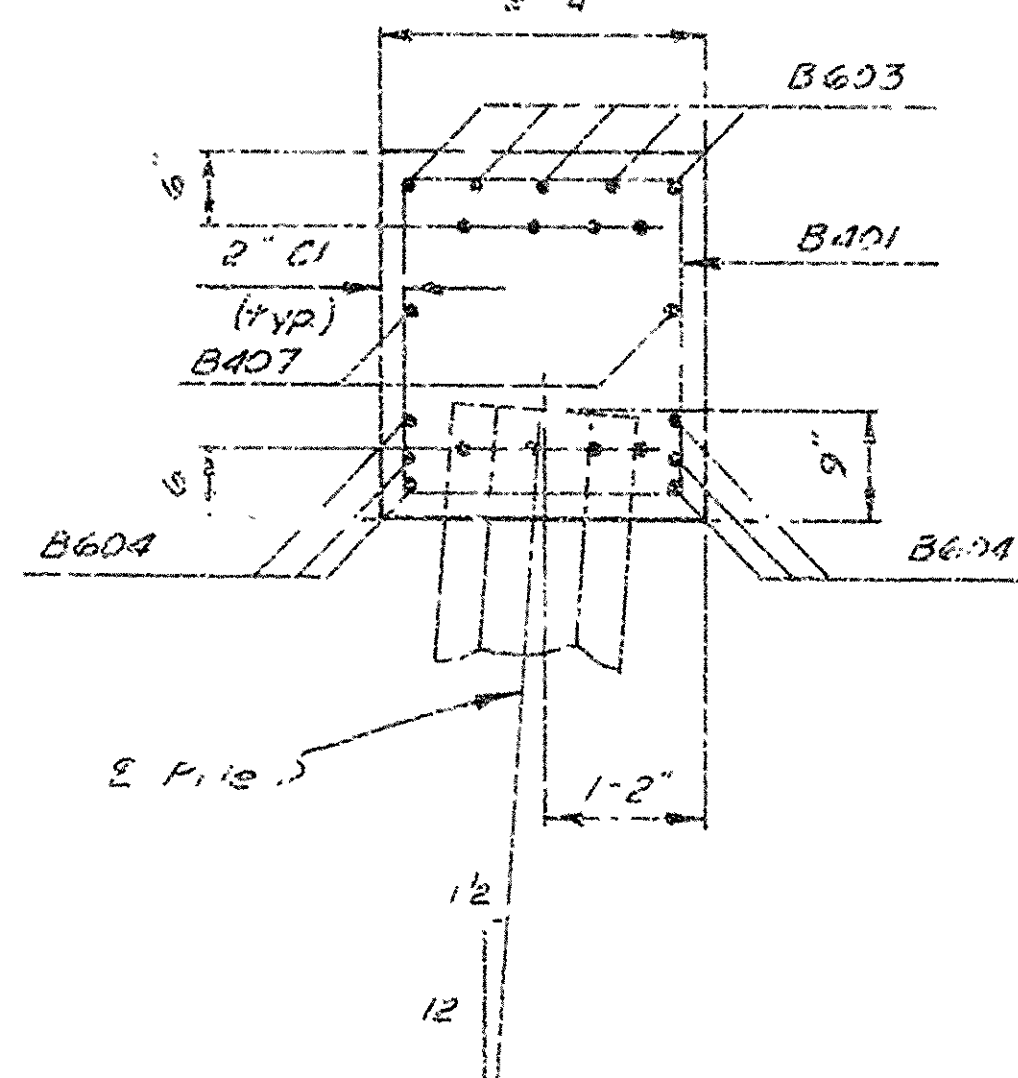


ELEVATION
Scale: 3/8" = 1'-0"

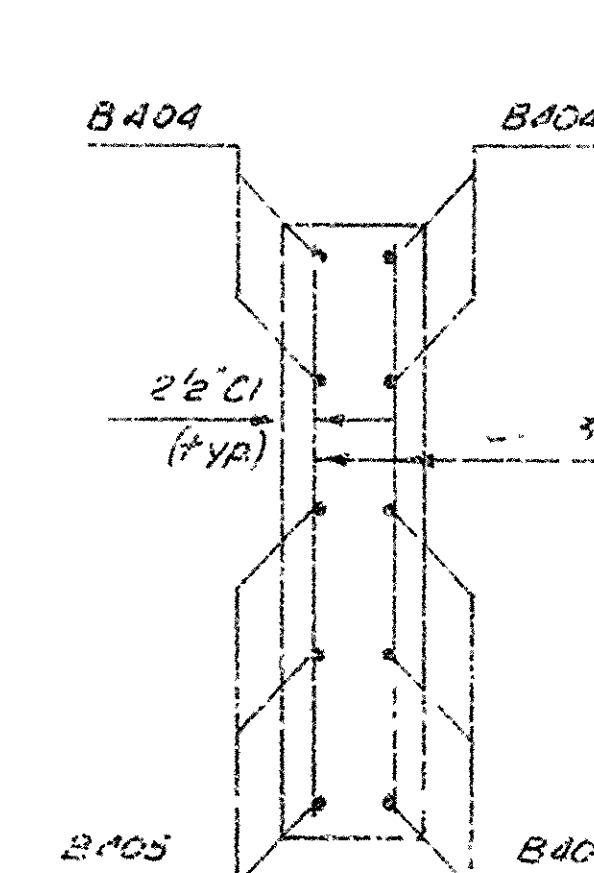
(Looking Forward for Bridges 2809AR & 2810AR)
(Looking Back for Bridges 2809A & 2810A)



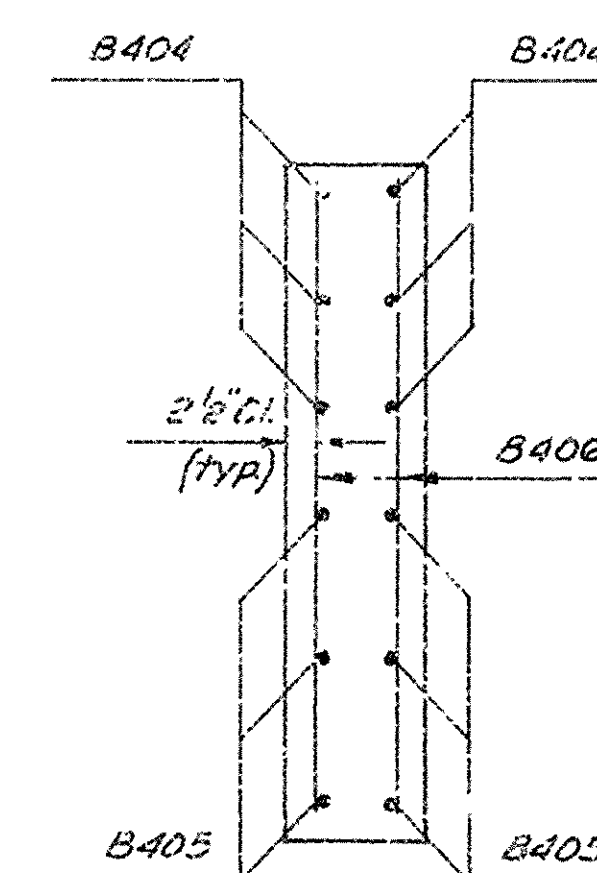
SECTION A-A
Scale: 3/4" = 1'-0"



SECTION B-B
Scale: 3/4" = 1'-0"



SECTION C-C
Scale: 3/4" = 1'-0"



SECTION D-D
Scale: 3/4" = 1'-0"

SHEET 2 OF 2
DETAILS FOR WIDENING BENTS
BRIDGE OVER BIG CREEK
AND DRY BAYOU
CLARKDALE-MISS. CO. LINE
RECONSTRUCTION
CRITTENDEN COUNTY

ROUTE I-55 SEC. 11

ARKANSAS STATE HIGHWAY COMMISSION

LITTLE ROCK, ARK

DRAWN BY: TEB DATE: 2-19-75
CHECKED BY: JCK DATE: 2-20-75
DESIGNED BY: JCK DATE: 2-18-75

BRIDGE NO. 2809R & 2809AR
BRIDGE NO. 2810R & 2810AR

SCALE: As Noted
DRAWING NO. 19220

BRIDGE ENGINEER

