



Latitude:35.18060, Longitude:-90.19575

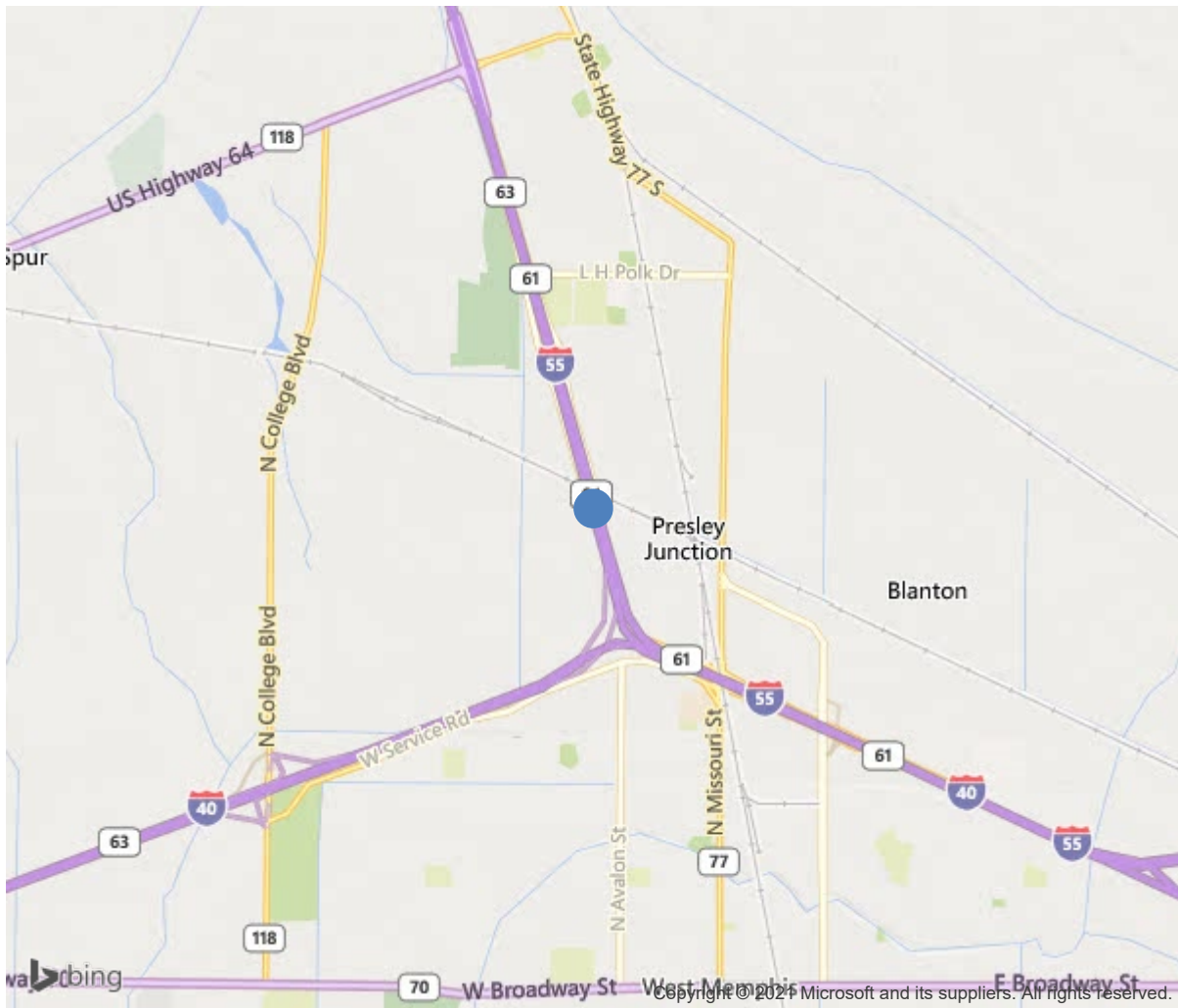
Route:55 Section:11 Log:7.898

Arnold Road ID:18x55x11xB, Arnold Log mile:64.384

District 01, Crittenden County

Owner: 1-State Highway Agency

.30 MI N JCT I-40



35.18060, -90.19575



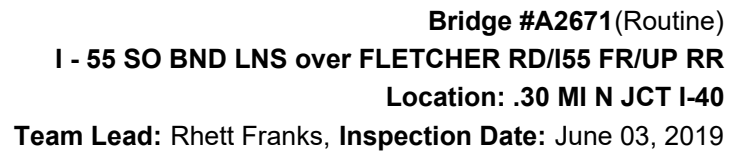
Bridge #A2671 (Routine)
I - 55 SO BND LNS over FLETCHER RD/I55 FR/UP RR
Location: .30 MI N JCT I-40
Team Lead: Rhett Franks Inspection Date: June 03, 2019

IDENTIFICATION	
(1) State Names	Arkansas
(8) Structure Number	A2671
(5) Inventory Route	55
(2) Highway Agency District	01
(3) County Code	35-Crittenden County, Arkansas
(4) Place Code	0
(6) Features Intersected	FLETCHER RD/I55 FR/UP RR
(7) Facility Carried	I - 55 SO BND LNS
(9) Location	.30 MI N JCT I-40
(11) Mile Point	7.898 mi
(12) Base Highway Network	No
(13) LRS Inventory Rte & Subrte	
(16) Latitude	35.1806
(17) Longitude	-90.19575
(98) Border Bridge State Code	
(99) Border Bridge Structure No.	
STRUCTURE TYPE AND MATERIAL	
(43) Main Structure Type	42
Material	4-Steel continuous
Type	2-Stringer/Multi-beam or girder
(44) Approach Structure Type	00
Material	0-Other
Type	0-Other
(45) No. of Spans in Main Unit	23
(46) No. of Approach Spans	0
(107) Deck Structure Type	1-Concrete Cast-in-Place
(108) Wearing Surface/Protective System	
Type of Wearing Surface	1-Monolithic Concrete (concurrently placed
Type of Membrane	0-None
Type of Deck Protection	0-None
AGE AND SERVICE	
(27) Year Built	1952
(106) Year Reconstructed	1988
(42) Type of Service	14
On	1-Highway
Under	4-Highway-railroad
(28) Lane	
On	2
Under	2
(29) Average Daily Traffic	43924
(30) Year of ADT	2014
(109) Truck ADT	34 %
(19) Bypass, Detour Length	2 mi
GEOMETRIC DATA	
(48) Length of Maximum Span	50 ft
(49) Structure Length	952 ft
(50) Curb or Sidewalk Width	
Left	0 ft
Right	0 ft
(51) Bridge Roadway Width Curb to Curb	39.4 ft
(52) Deck Width Out to Out	42.5 ft
(32) Approach Roadway Width (W/Shoulders)	38.1 ft
(33) Bridge Median	0-No median
(34) Skew	0 Deg
(35) Structure Flared	No flare
(10) Inventory Route Min Vert Clear	99.99 ft
(47) Inventory Route Total Horiz Clear	41 ft
(53) Min Vert Clear Over Bridge Rdwy	99.99 ft
(54) Min Vert Underclear	23.3 ft
Ref:	
(55) Min Lat Underclear RT	9.1 ft
Ref:	
(56) Min Lat Underclear LT	5.5 ft
NAVIGATION DATA	
(38) Navigation Control	N-Not applicable, no waterway.
(111) Pier Protection	1-Navigation protection not requ
(39) Navigation Vertical Clearance	0 ft
(116) Vert-Lift Bridge Nav Min Vert Clear	0 ft
(40) Navigation Horizontal Clearance	0 ft

CLASSIFICATION	
(112) NBIS Bridge Length	Y
(104) Highway System	1
(26) Functional Class	11-Urban Principal Arterial - Int
(100) Defense Highway	1-The inventory route is on a In
(101) Parallel Structure	L-The left structure of parallel
(102) Direction of Traffic	1 - way traffic
(103) Temporary Structure	
(105) Federal Lands Highways	0-N/A
(110) Designated National Network	1-The inventory route is part of the
(20) Toll	3-On free road. The structure is toll-
(21) Maintain	1-State Highway Agency
(22) Owner	1-State Highway Agency
(37) Historical Significance	5-Bridge is not eligible for the NRHP
CONDITION	
(58) Deck	6
(59) Superstructure	5
(60) Substructure	6
(61) Channel & Channel Protection	N
(62) Culverts	N
LOAD RATING AND POSTING	
(31) Design Load	6-MS 18+Mod / HS 20+Mod
(63) Operating Rating Method	1
(64) Operating Rating	
Type	1-Load Factor(LF)
Rating	59
(65) Inventory Rating Method	1-Load Factor(LF)
(66) Inventory Rating	
Type	23
Rating	35
(70) Bridge Posting	5-Equal to or above legal loads
(41) Structure Open/Posted/Closed	A-Open, no restriction
APPRAISAL	
(67) Structural Evaluation	5
(68) Deck Geometry	6
(69) Clearances, Vertical/Horizontal	3
(71) Waterway Adequacy	N
(72) Approach Roadway Alignment	8
(36A) Bridge Railings	1-Inspected feature meets currently a
(36B) Transitions	1-Inspected feature meets currently a
(36C) Approach Guardrail	1-Inspected feature meets currently a
(36D) Approach Guardrail Ends	1-Inspected feature meets currently a
(113) Scour Critical Bridges	N-Bridge not over waterway.
PROPOSED IMPROVEMENTS	
(75) Type of Work	Bridge rehabilitation because
(76) Length of Structure Improvement	952 ft
(94) Bridge Improvement Cost	\$ 0
(95) Roadway Improvement Cost	\$ 0
(96) Total Project Cost	\$ 1815
(97) Year of Improvement Cost Estimate	2000
(114) Future ADT	19100
(115) Year of Future ADT	2029
INSPECTIONS	
(90) Inspection Date	06/2019
(91) Frequency	24 Months
(92) Critical Feature Inspection	Done Freq. (Mon) Date
A: Fracture Critical Detail	No
B: Underwater Inspection	No
C: Other Special Inspection	No

Team Lead: Rhett Franks, **Inspection Date:** June 03, 2019

[illegible]



Bridge #A2671(Routine)
I - 55 SO BND LNS over FLETCHER RD/I55 FR/UP RR
Location: .30 MI N JCT I-40
Team Lead: Rhett Franks, Inspection Date: June 03, 2019



Typical deck



Span 9, Girder 3, Pin & Hanger: Floating.



Bent 1, Back Wall: Typical cracking.



Span 6, Girder 1, Bottom Pin: Keeper missing.



Span 12, Girder 6, Bottom Pin: Retaining washer weld fractured.



Span 9, Girder 4: Hole through web.



Bent 5, Column 4, Cap: Cracking.



Bent 5, Column 4: Spalling with exposed reinforcing steel.



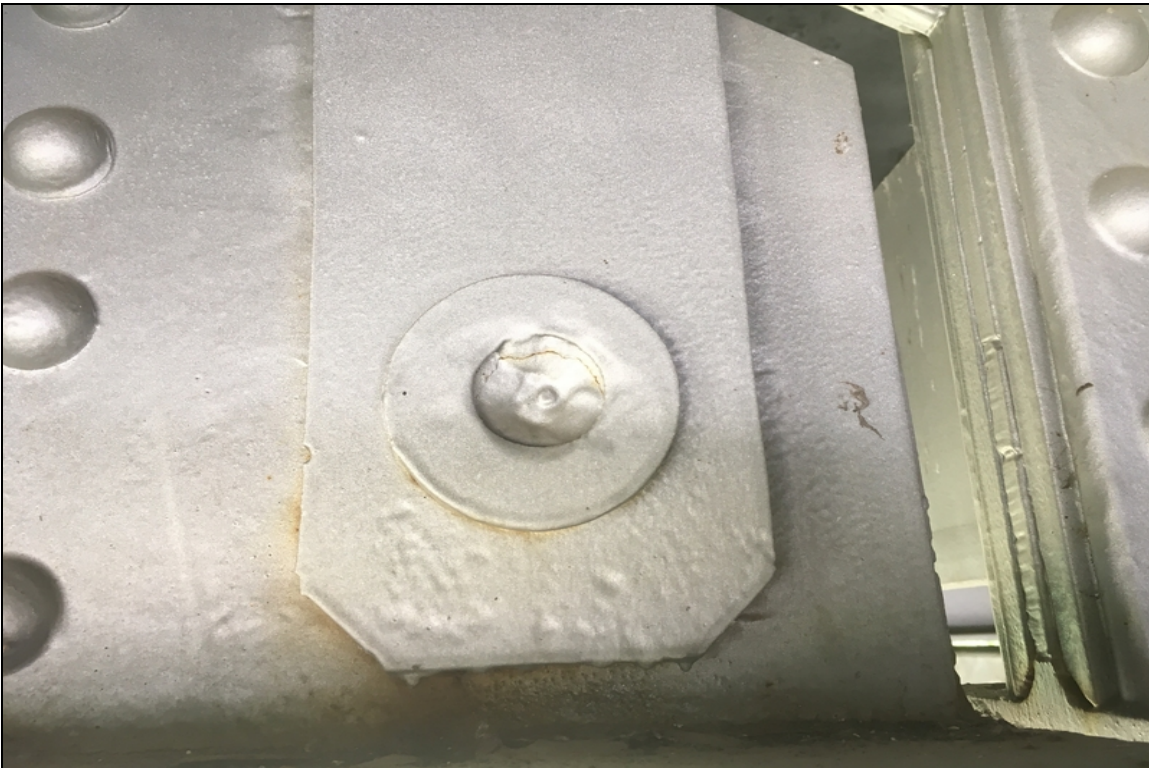
Bent 2, Girder 1, Bearing: Active corrosion and floating



Typical bridge railing.



Span 8, Girder 3, Top Pin: Repaired.



Span 11, Girder 6, Bottom Pin: Retaining washer weld fractured.



Sealable deck cracking.



Span 18, Girder 1: Fractured cotter key.



Typical section loss to the diaphragm connections.



Span 6, Girder 2, Top Pin: Repaired.



Bent 22, Back Wall: Spalling.



Span 4, Girder 2, Bottom Pin: Retaining washer weld fractured.



Span 4, Girder 3, Top Pin: Repaired.



Span 11, Girder 6, Bottom Pin: Repaired.



Span 14, Girder 2, Top Pin: Retaining washer weld fractured.



Inventory with direction of log mile.



Span 4, Girder 2, Bottom Pin: Repaired.



Sealable deck cracking.



Bent 1, Girder 3 & 4, Bearings: Floating



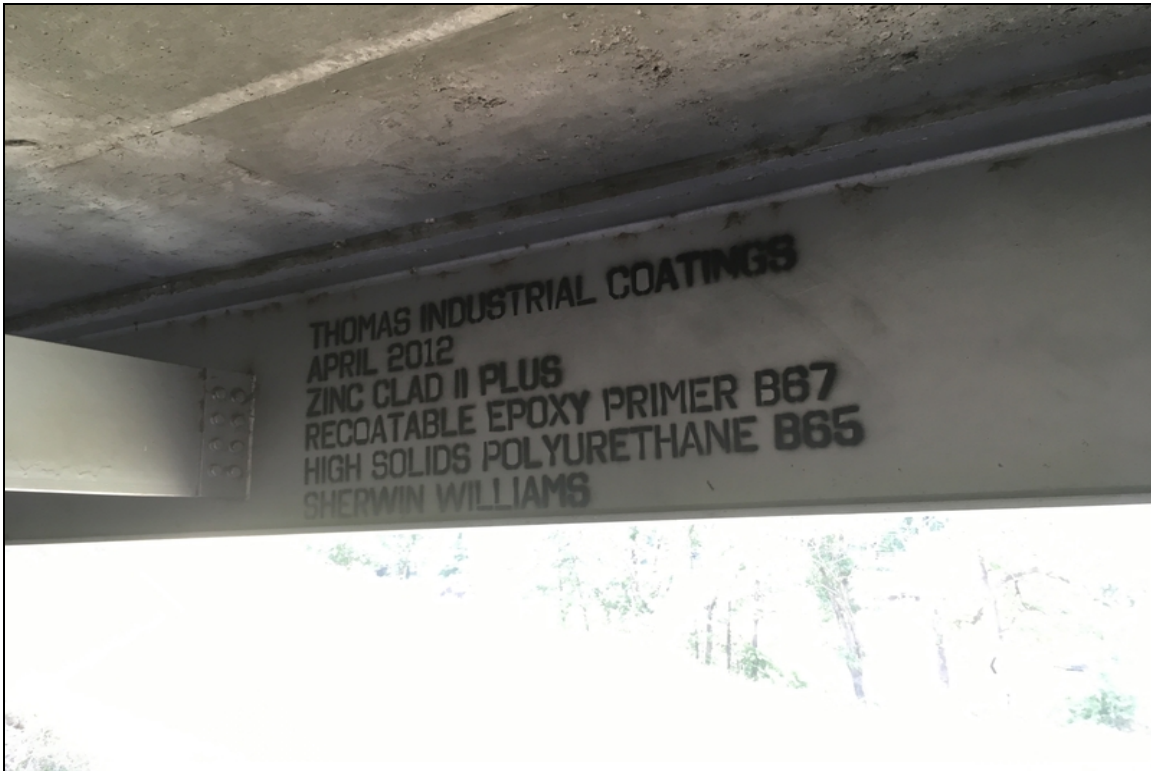
Span 14, Girder 2, Top Pin: Retaining washer weld fractured.



Bent 2, Column 4: Spalling with exposed reinforcing steel.



Bent 15, Girder 3, Cap: Cracking.



Paint details.



Bent 1: Spalling.



Span 6, Girder 2, Top Pin: Retaining washer weld fractured.



Span 4, Girder 3, Top Pin: Retaining washer weld fractured.



Span 20, Girder 6, Top Pin: Retaining washer weld fractured.



Typical efflorescence in the undersurface.



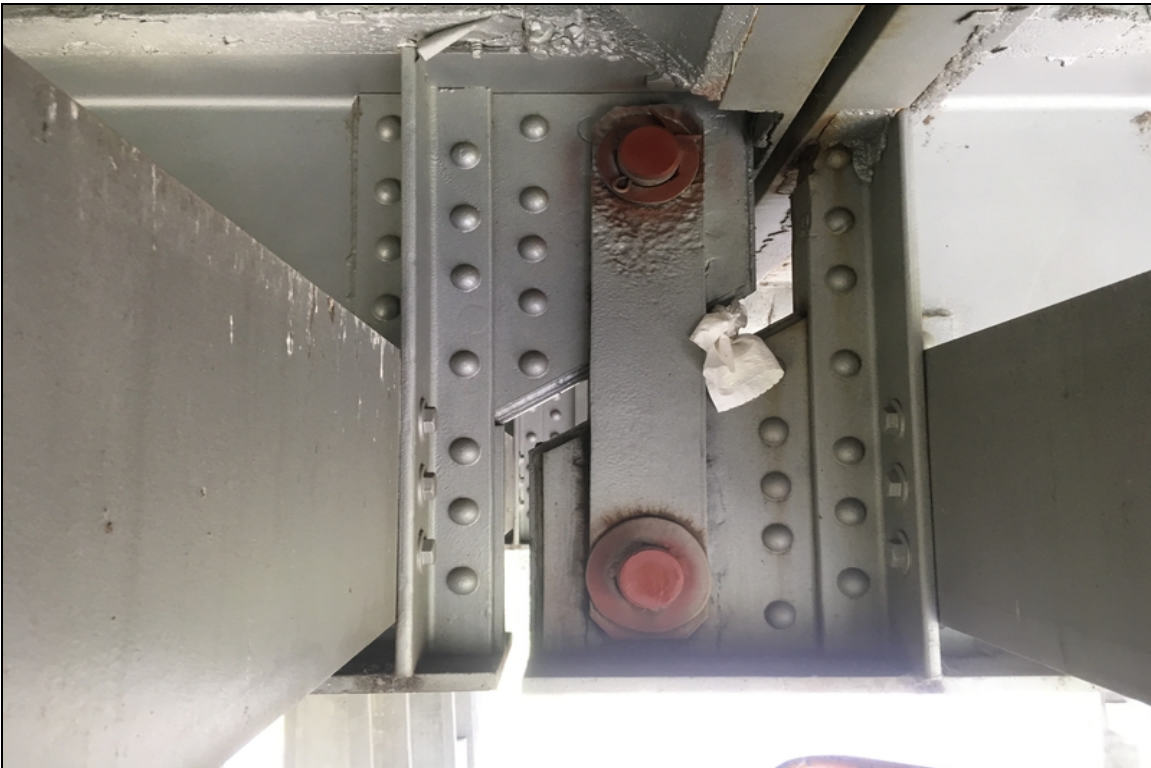
Typical approach slab.



Span 17, Girder 2, Top Pin: Retaining washer weld fractured.



Bent 15, Girder 6, Cap: Spalling.



Span 5, Girder 5, Pin & Hanger: Floating.



Bent 1, Back Wall: Minor spalling.



Typical undersurface.



Span 6, Girder 1, Bottom Pin: Repaired.



Typical columns.



Approach 2: Settlement.



Typical joints.



Span 8, Girder 3, Pin & Hanger: Floating.



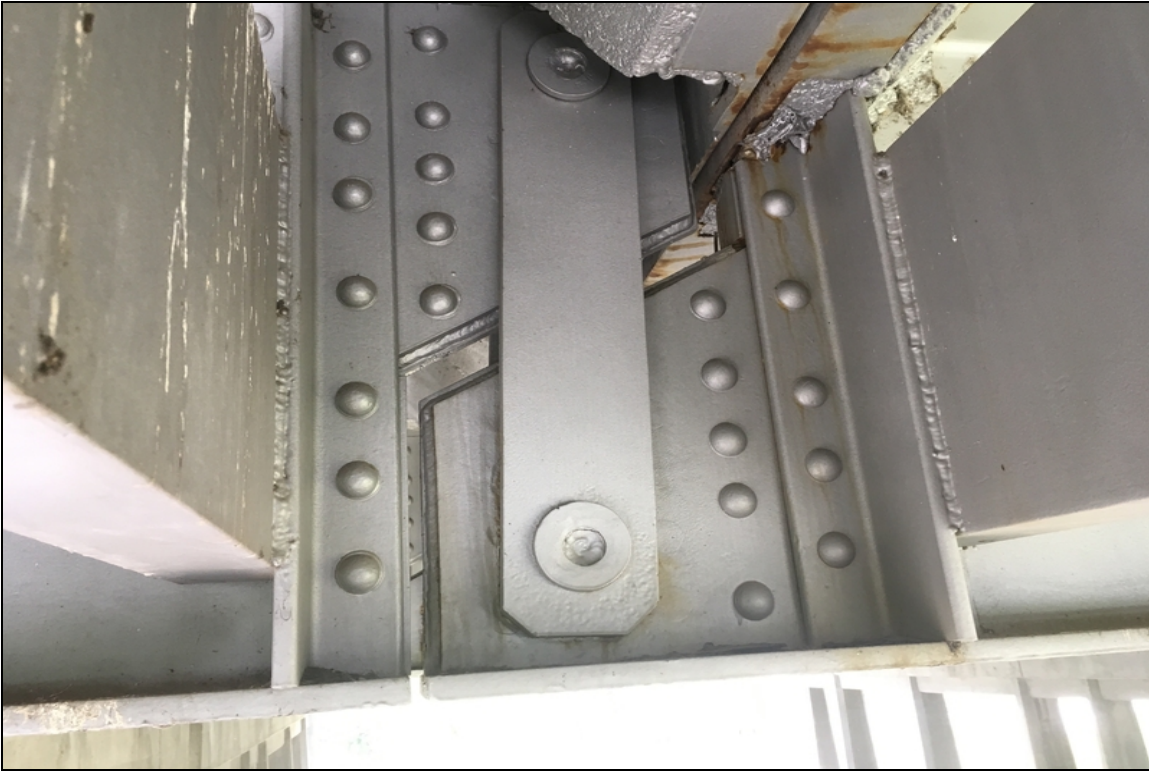
Span 10, Girder 6, Bottom Pin: Keeper missing. Washer loose.



Span 8, Girder 3, Top Pin: Retaining washer weld fractured.



Span 4, Pourable Joint: Sag with minor leakage



Span 4, Girder 2, Pin: Retaining washer weld fractured.



Bent 8, Cap: Minor spalling with exposed reinforcing steel.



Bridge #A2671 (Routine)

I - 55 SO BND LNS over FLETCHER RD/I55 FR/UP RR

Location: .30 MI N JCT I-40

Team Lead: Rhett Franks Inspection Date: June 03, 2019

Maintenance Needs



Bridge #A2671 (Routine)

I - 55 SO BND LNS over FLETCHER RD/I55 FR/UP RR

Location: .30 MI N JCT I-40

Team Lead: Rhett Franks **Inspection Date:** June 03, 2019

Inspection Comments

The inspection was performed by using Genie lift. All pins at the pin and hanger assemblies were cleaned of paint and inspected with a D-meter to insure no cracks were present.