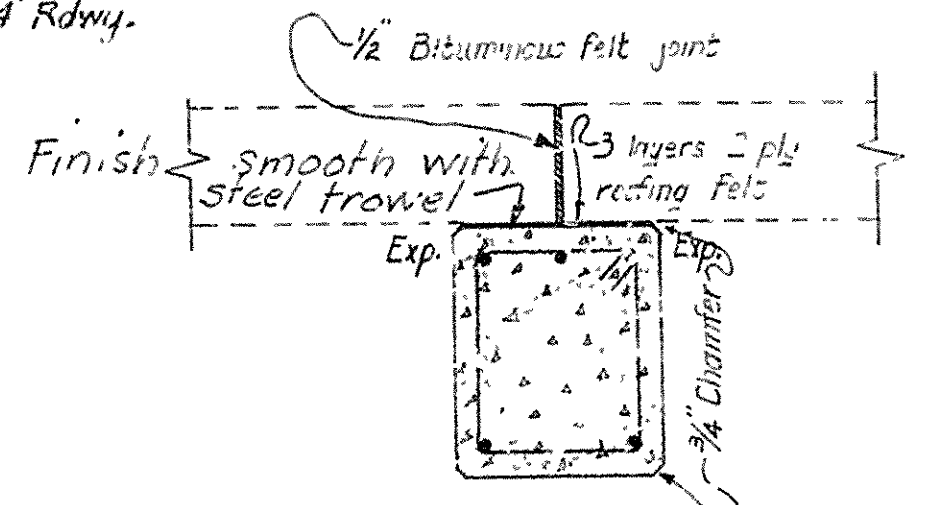
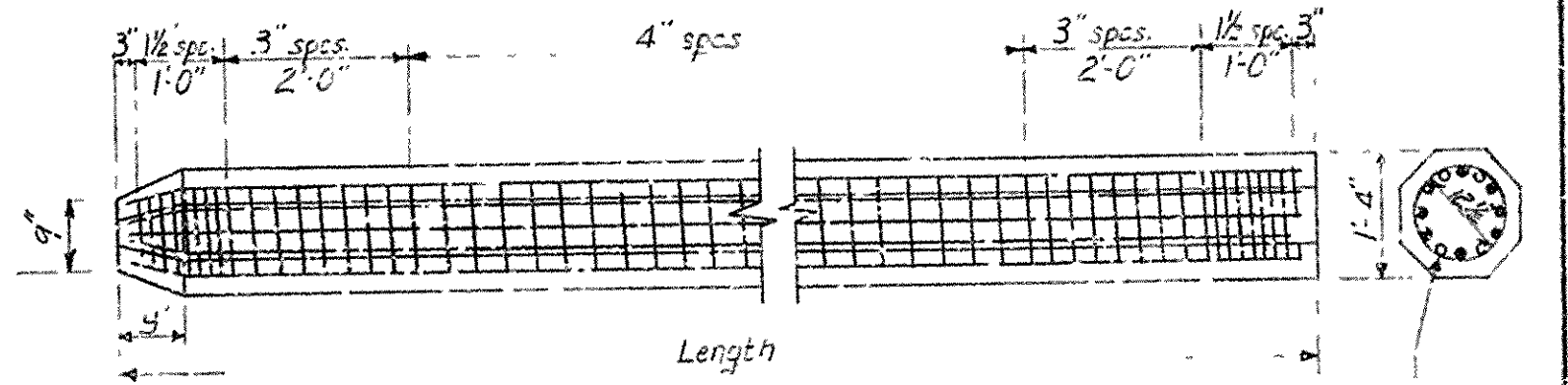


24' Rdwy.				28' Rdwy.				BAR LIST							
NO. IN END BENT	NO. IN INTERM. BENT	NO. IN END BENT	NO. IN INTERM. BENT	MARK	SIZE	LENGTH	24' Rdwy.	28' Rdwy.	"A"	B	BENDING DIAGRAM				
4	4	4	4	P <sub>2</sub>	3/4"	30'-5"	34'-5"	10'-0"	1'-5"						
48	18	52	52	P <sub>4</sub>	1/2"	8'-11"	8'-11"	2'-1 1/2"	1'-11 1/2"						
15	15	15	15	P <sub>5</sub>	3/8"	6'-2"	6'-2"	2'-1 1/2"	1'-11 1/2"						
6		6		T0 <sub>2</sub>	3/8"	7'-1"	7'-1"	2'-8"	0'-6"						
4	4	4	4	P <sub>1</sub>	3/4"	28'-2"	32'-2"								
3	3	3	3	P <sub>3</sub>	1"	28'-2"	32'-2"								
	*14		*16	P <sub>8</sub>	3/4"	2'-0"	2'-0"								
16		16		P <sub>7</sub>	1/2"	4'-2"	4'-2"								
12		12		P <sub>6</sub>	1/2"	6'-0"	6'-0"								
8		8		P <sub>5</sub>	1/2"	3'-0"	3'-0"								
4		4		P10	1/2"	5'-0"	5'-0"								
12		12		T0 <sub>1</sub>	3/8"	4'-3"	4'-3"								
Straight Bars															
Dimensions are to ctrs. of bars.															

\* Except at expansion joints.  
\*\* Use 14'-6" for 24' Rdwy.

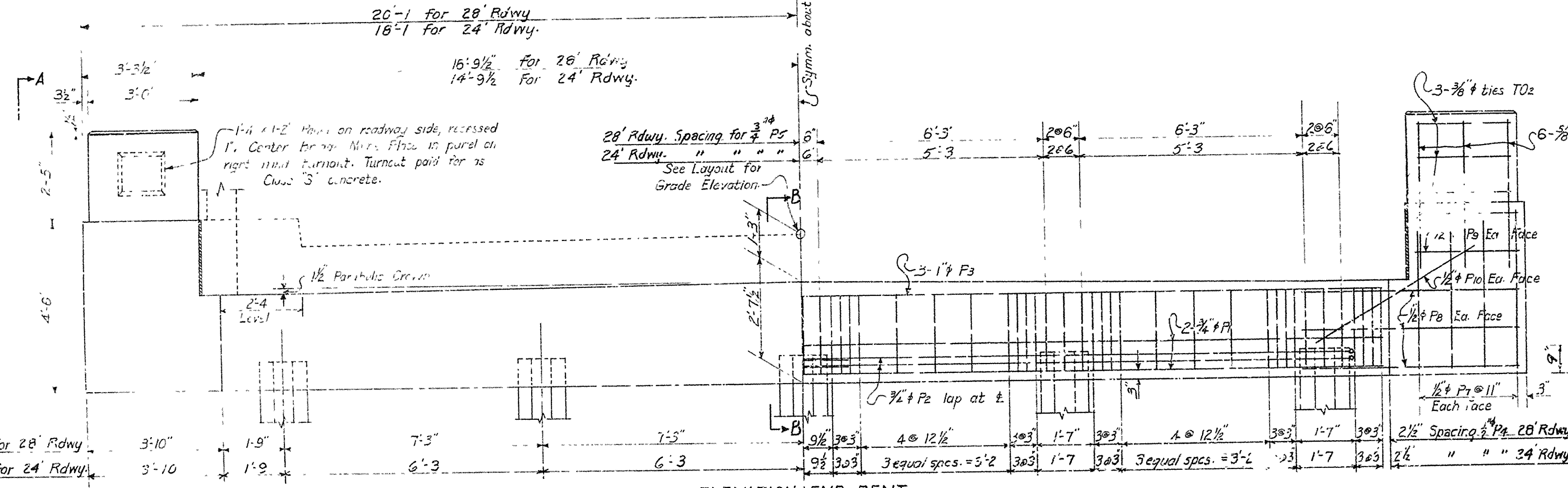
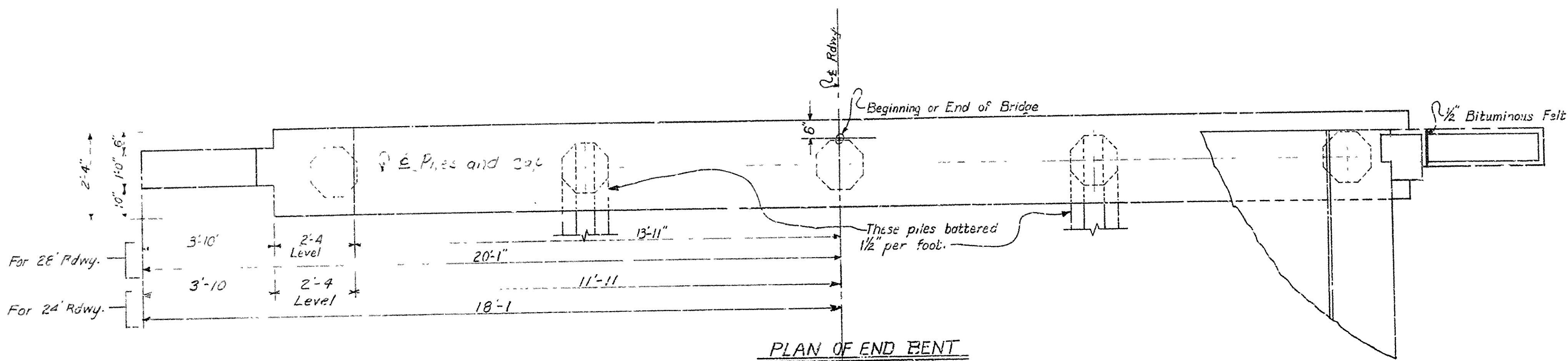


**DETAIL A**  
**FOR EXP. INTER. BENTS**  
NOTE:  
All concrete to be Class 'S'.  
For additional General Notes and details of slab spans see Drawgs. 5386 & 5387.

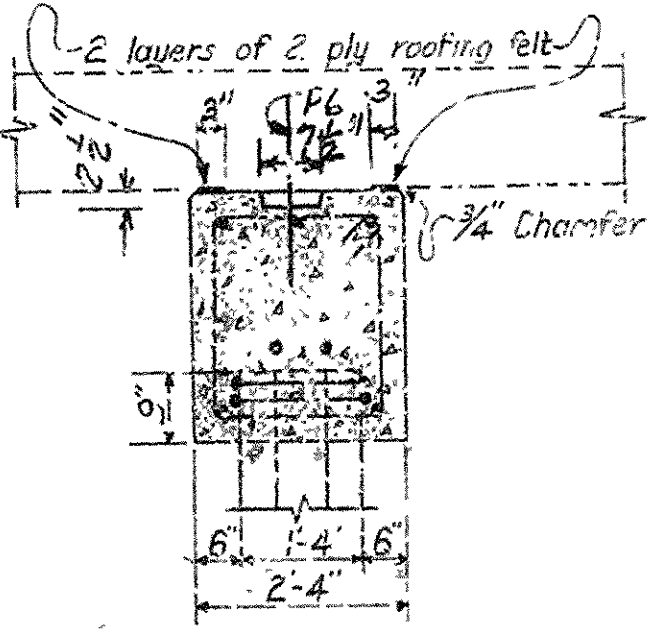
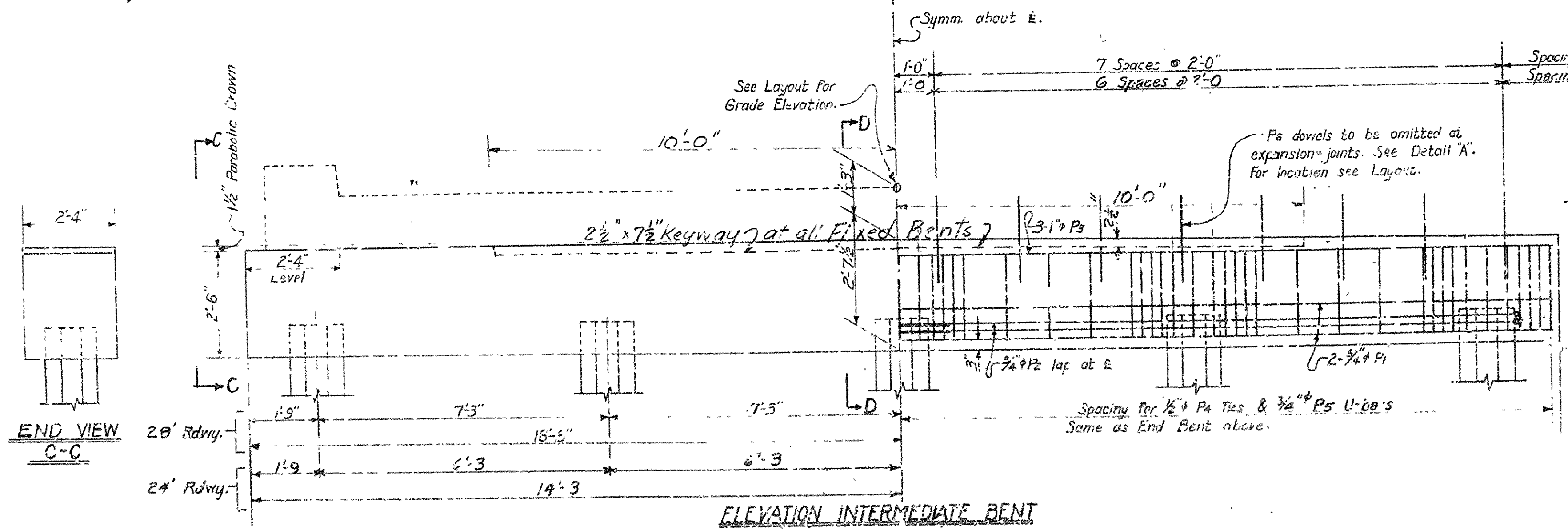


REVISED 2-22-54 for use 24' Rdwy. WWM. Checked by BV

**DETAILS OF R.C. PILE BENTS**  
**FOR 25.5'-30.0'-25.5' & 25.5'-25.5'**  
**R.C. SLABS**  
**28'-0" CLEAR RDWY. 2 CURBS @ 1'-6"**  
**24'-0" " " " @ 1'-6"**  
**ARKANSAS STATE HIGHWAY COMMISSION**  
**LITTLE ROCK, ARK.**  
Drawn By: B.R. Date: 4-1-54  
Traced By: Date:  
Checked By: Date: 4-27-54  
Scale: 1/2" = 1'-0"  
**DRAWING NO. 5385**



NOTE:  
Dimensions not definitely shown as pertaining to a particular Rdwy. width shall be taken to be for both Rdwy widths.



**SECTION D-D**  
**FOR FIXED BENTS**  
APPROVED BY  
Bridge Design Engineer

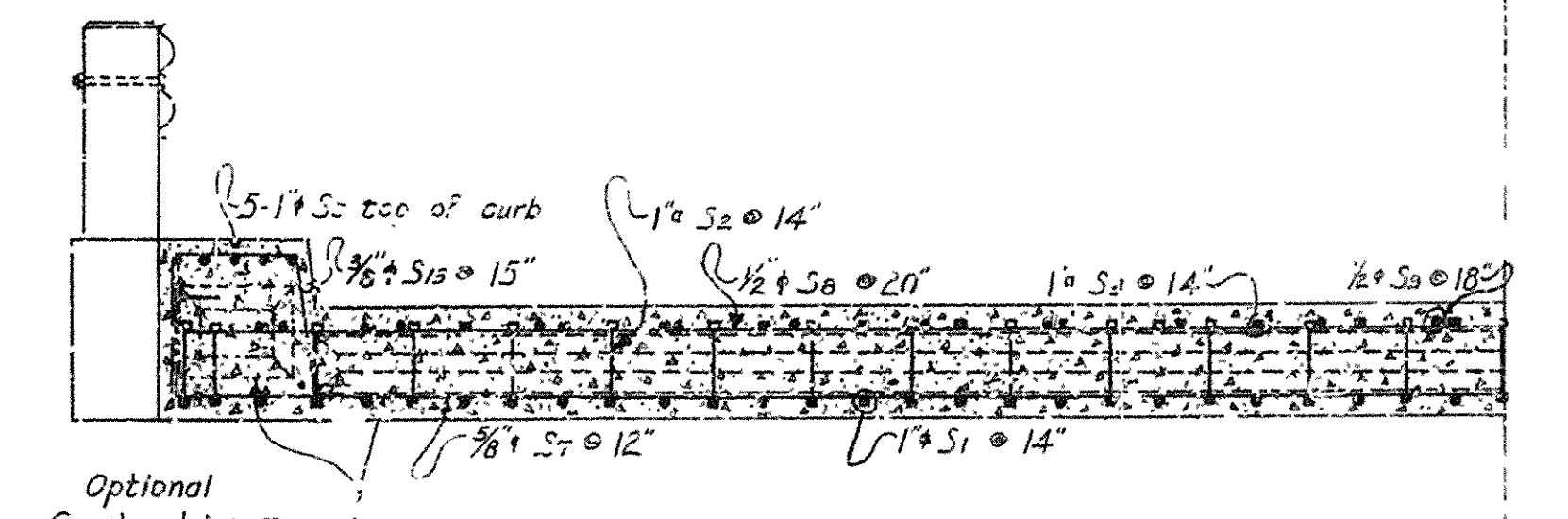


[illegible]

QUARTER PLAN  
 $S = a/s = \frac{36}{28} = 1$

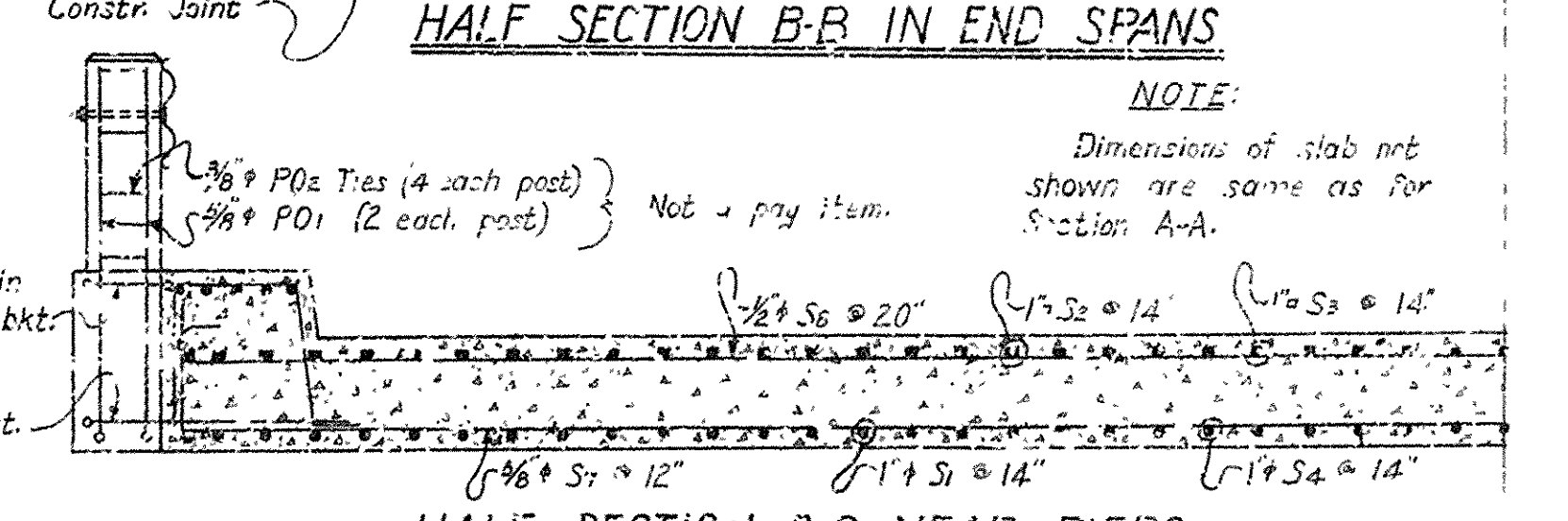
[illegible]

HALF SECTION A-A AT ABUTMENTS

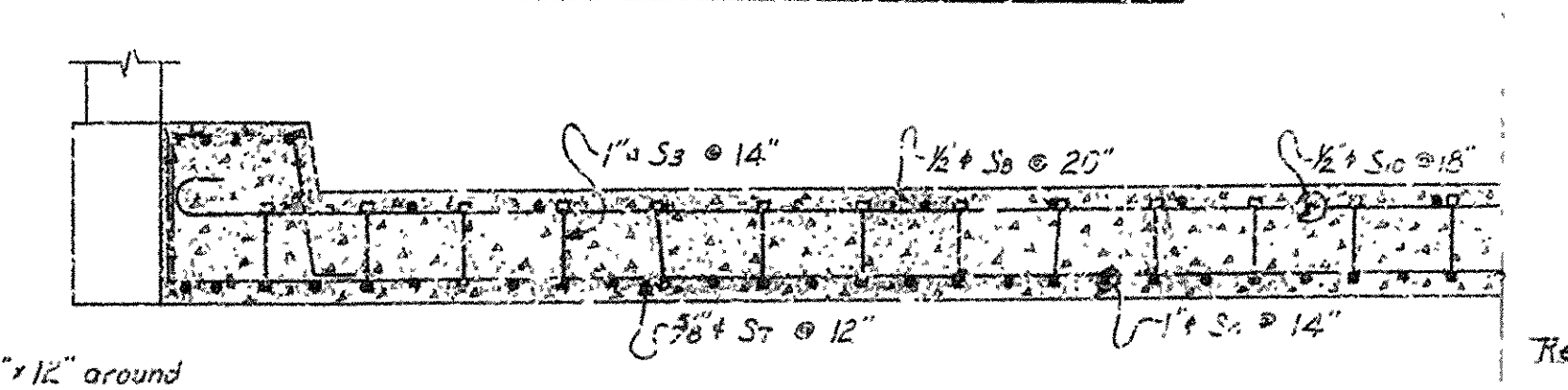


HALF SECTION B-B IN END SPANS

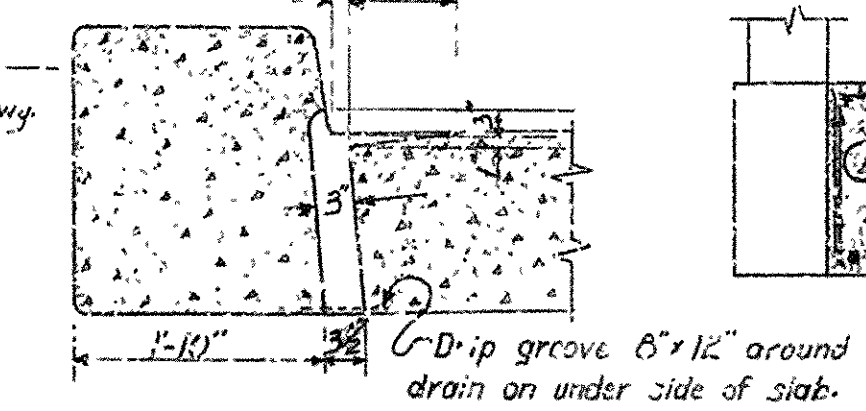
NOTE:  
Dimensions of slab not shown are same as for section A-A.



HALF SECTION C-C NEAR PIERS



HALF SECTION D-D IN CENTER SPAN



SECTION THRU DRAIN OPENINGS

5 1/2"

1 1/2"

10 1/2"

1 1/2"

SECTION OF RAIL

Scale: 1/8" = 1'-0"

SECTION OF RAIL  
Scale: 1 1/2" = 1'-0"

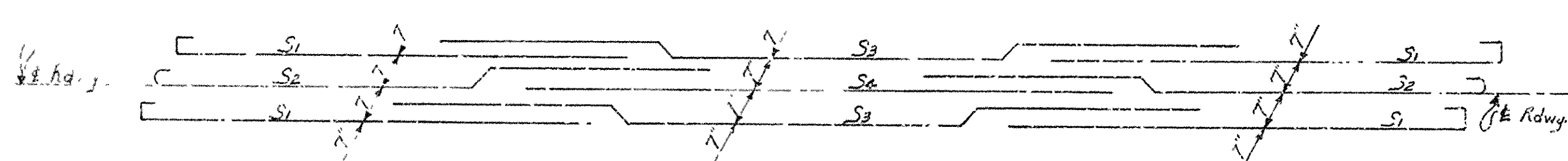


DIAGRAM SHOWING ARRANGEMENT OF MAIN LONGITUDINAL REINFORCING BARS IN ALTERNATE ROWS

[illegible][illegible]

1-For 34" x 12" x 8" \* 24" x 24" x 24"  
 2-For 12" x 12" x 12" 36" x 30" x 30"  
 3-For intermediate units 48" x 36" x 36"  
H2O-Si6 LOADING  
 Load density = 1.17  
 Dead Load = 2 1/2"  
 Live Load = 100-7' x 10' = 7000  
 or Load = 100  
 Unit Area = 55.37"  
 Concrete = 1500' / 10' = 150  
 Impact = 100%  
 Unit Stress =  
 Slab Thickness (in) = 24"  
 Reinforcement = 24"

Revisions:

Pouring sequence 1 PC 6-23-52  
 Include 24'-0" Clear Rows FR 9-23-56  
 DETAILS OF 24'-0" CLEAR ROWS

DETAILS OF STANDARD 81'-0"  
THREE SPAN CONTINUOUS R.C. SLAB  
SPAN LENGTHS 25'-6"-30'-0"-25'-6"  
28'-0" CLEAR RDWY. 2 CURBS @ 1'-6"  
24'-0" CLEAR RDWY. 2 CURBS @ 1'-6"

ARKANSAS STATE HIGHWAY COMMISSION  
LITTLE ROCK, ARK.

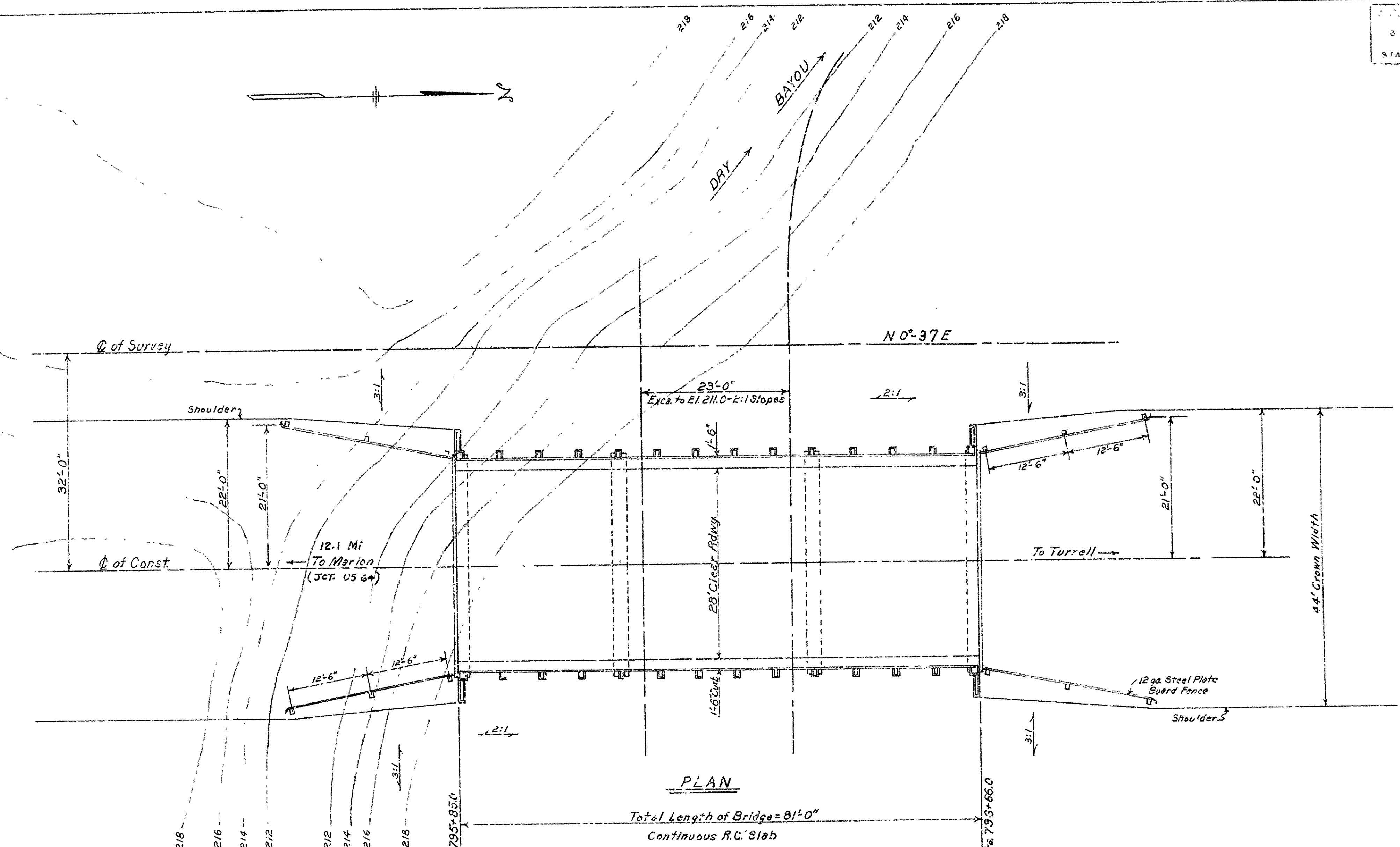
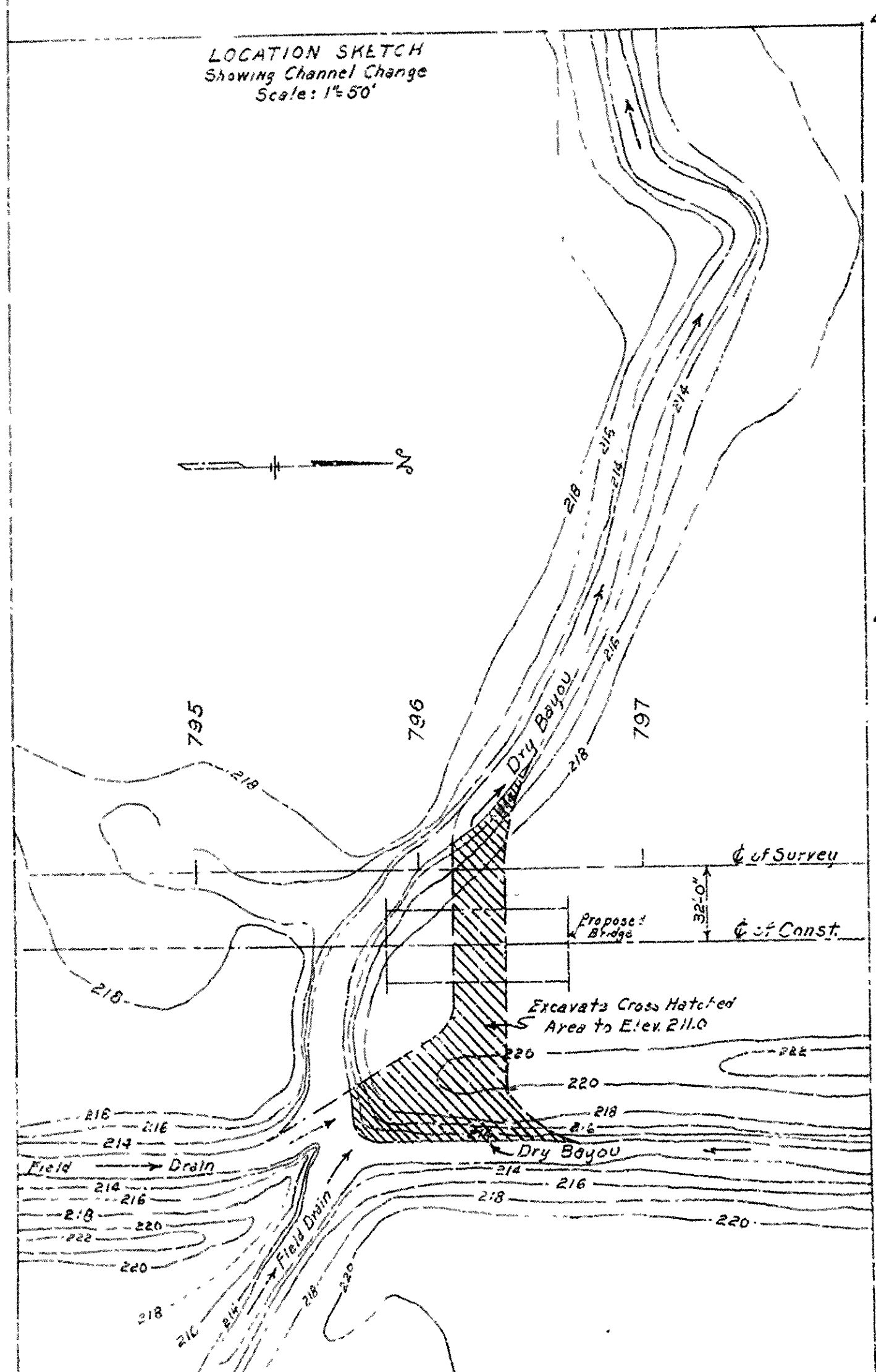
Drawn By: J. H. Date: 4-12-51  
Traced By: Date:  
Checked By: J. H. Date: 4-30-51

APPROVED BY

Richard P. ...  
Bridge Design Engineer

DRAWING NO. 5388





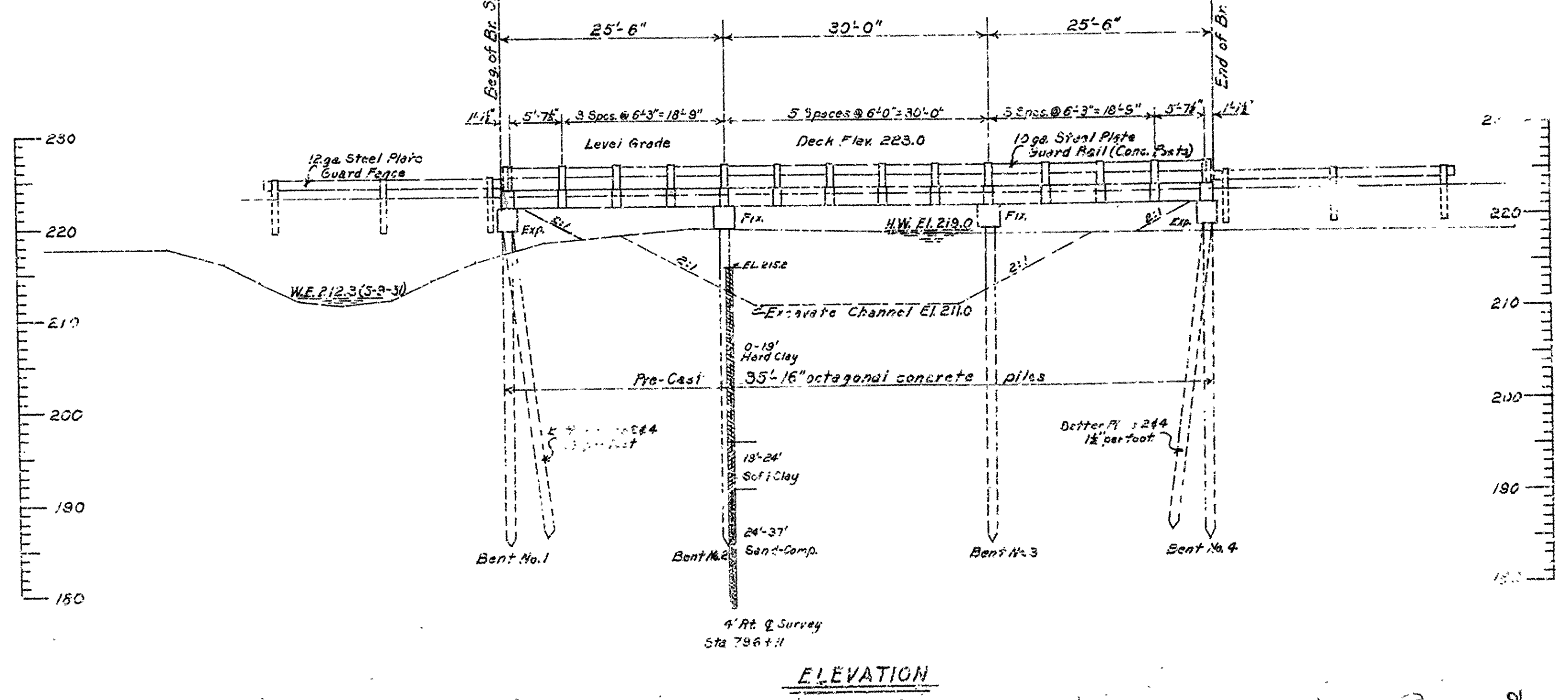
**GENERAL NOTES**

B.M. Elev. 220.34 Nail in side of 10" Red Oak  
14' Lt. of Sta. 792+63.  
For Details see Drawings: 5385 & 5386  
Loading: H20 S16  
Stresses: Class "S" Concrete 1200  $\psi$  / in.  
Reinforcing Steel 20,000  $\psi$  / in.

Lengths of pre-cast concrete piles shown are for estimating purposes only. Drive one 40' pile in bent no. 2 as a test pile. Drive pile in Bent No. 1 & 4 after embankment is in place.

Piles to be driven to minimum bearings as follows:  
Bents 1 & 4 30 tons per pile  
Bents 2 & 3 40 tons per pile.

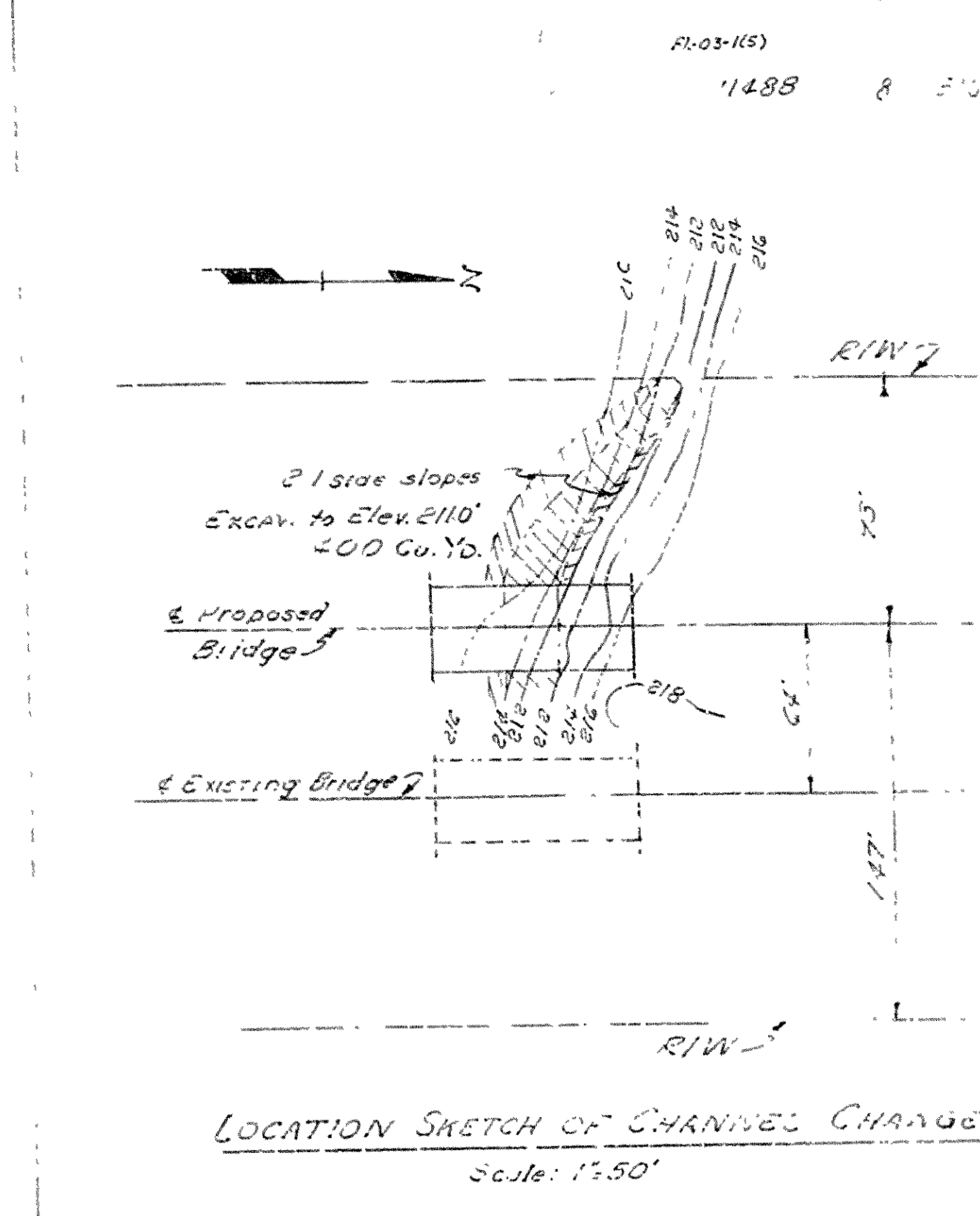
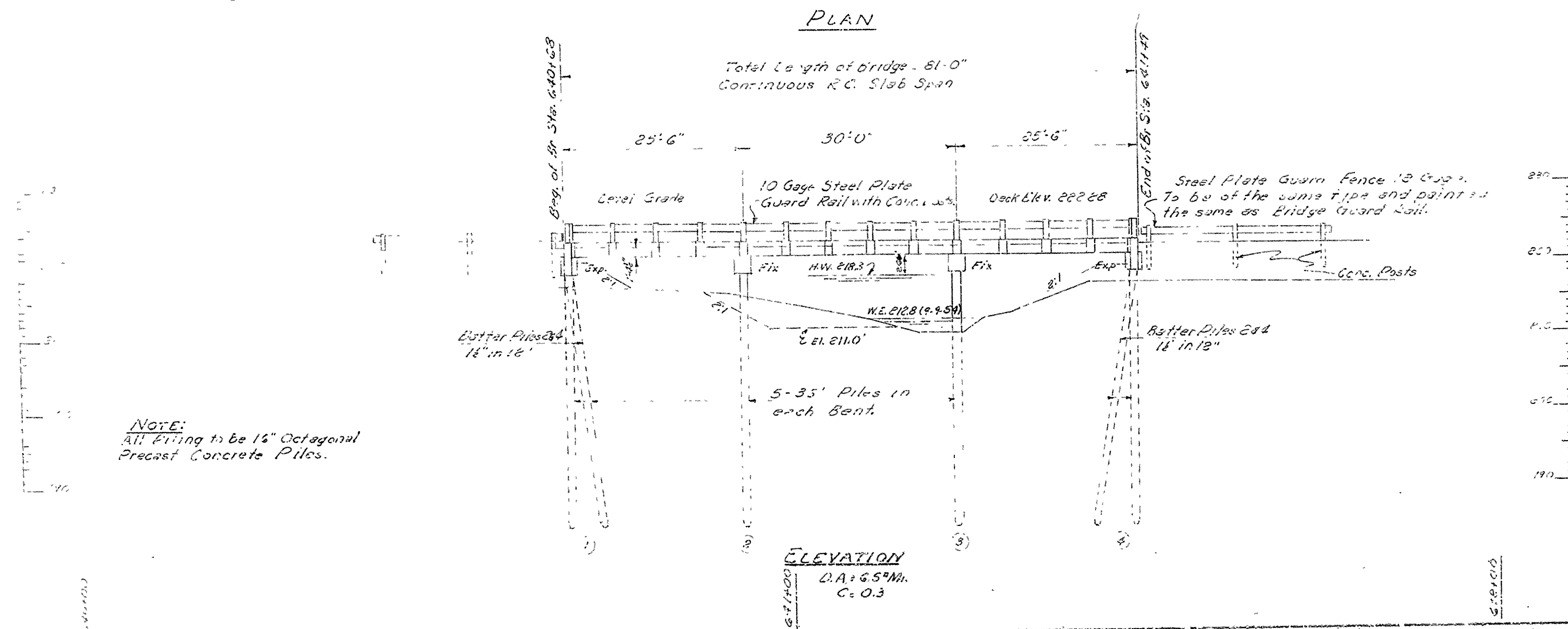
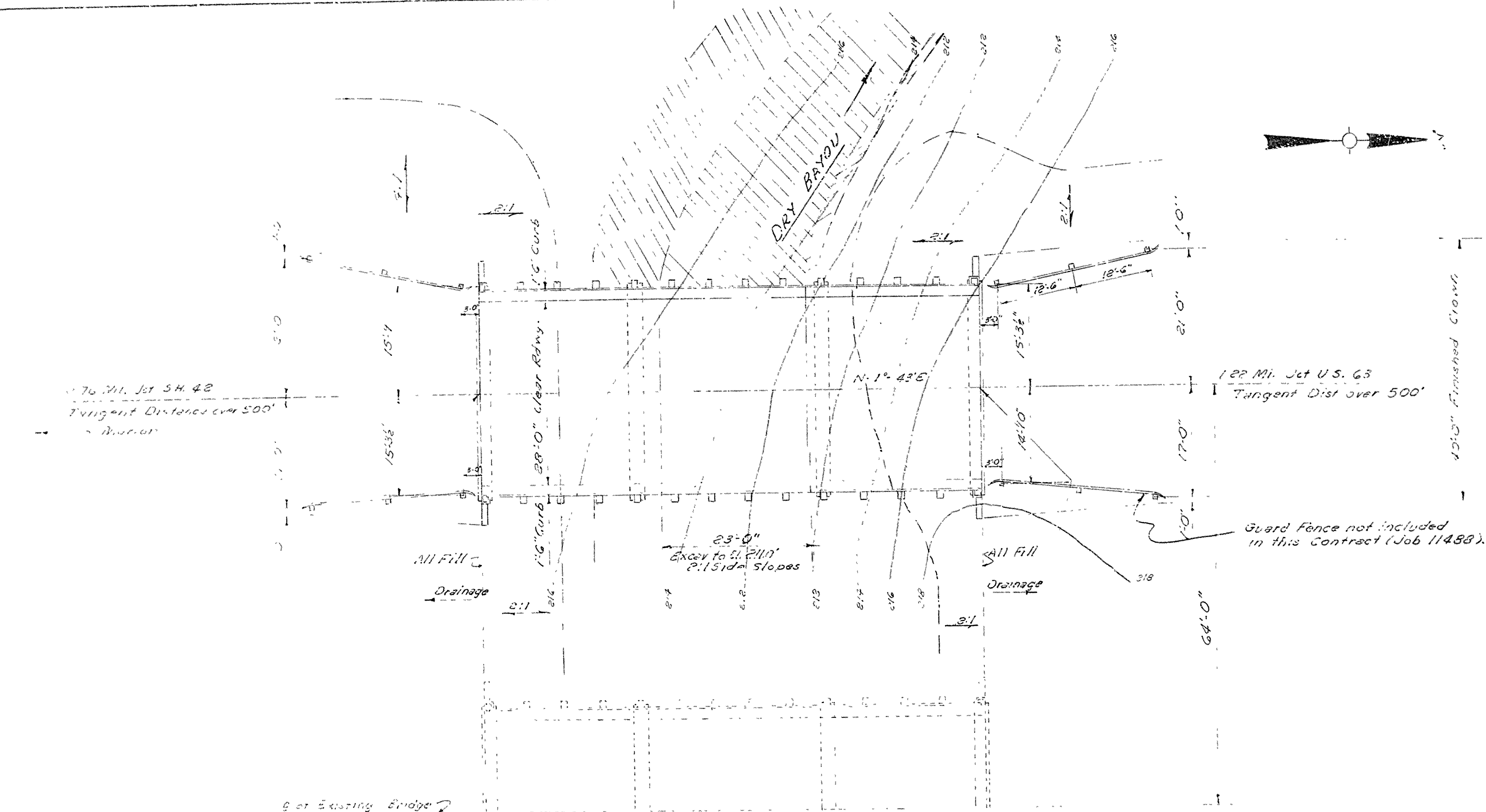
Drainage Area = 6.5 sq. mi.  
C = 0.3



LAYOUT OF  
BRIDGE OVER DRY BAYOU  
MARION-TURRELL ROAD  
CRITTENDEN COUNTY

ROUTE 61 SEC. 1  
ARKANSAS STATE HIGHWAY COMMISSION  
LITTLE ROCK, ARK.  
Drawn By: R.M. Date: 5-28-51  
Traced By: Date: 6-7-51  
Checked By: Date: 6-7-51  
BRIDGE NO. 4810 DRAWING NO. 8013

W. H. Borden  
Bridge Design Engineer



GENERAL NOTES:  
3.11. x on S.W. corner bridge 44' R/L Sta. 640+67 @ elev. 600.40  
Piles in End Bents tend to be driven after embankment is  
in place. Lengths of Piling shown are assumed for estimating  
quantities only. Actual lengths to be determined in the field.  
Drive one 40' pile in Bent No. 2 as a Test Pile. Drive piles  
to a minimum bearing of 30 Tons per pile in End Bents, and  
40 Tons per pile in Int. Bents, and to a minimum penetration  
of 20' below the natural ground line.  
For Details see Drawgs. 538S & 538G.

LOADING: H-20-S16 A.S.H.O. 1953  
STRESSES:  
Class "S" Concrete ( $n=10$ ) = 1,400 p.s.i.  
Reinforcing Steel = 20,000 p.s.i.

LAYOUT OF  
BRIDGE OVER DRY BAYOU  
MARION-TURRELL- ADDITIONAL LANES  
CRITTENDEN COUNTY  
ROUTE 61 SECTION 1

ARKANSAS STATE HIGHWAY COMMISSION  
LITTLE ROCK, ARK.

Drawn By F.E.B. Date 6-26-55 Scale 1 in. = 10 ft.  
Checked By 214K Date 6-1-55  
BRIDGE NO. 2810-A DRAWING NO. 8871



DATE REVISED	DATE FILMED	DATE REVISED	DATE FILMED	FILE NO.	STATE	FILE NO.	STATE	FILE NO.	STATE
				6	ARK	7-55-1171, 17			
				JOB NO.		11864			

① 2809AR-2810R QUANT. SHT. 19217

### SCHEDULE OF BRIDGE QUANTITIES

BRIDGE NO.		CODE NO.	NAME	PLATE	TITLE	UNIT	ITEM NO.	501	SP # 802	SP # 802	803	804	804	*SP # 805	806	812	SP JOB 11864
						UNIT	ITEM	COMMON EXCAVATION FOR STRUCTURES -BRIDGE	CLASS "S" CONCPETE	CLASS "S (AE)" CONCRETE	BOILED LINSEED OIL	REINFORCING STEEL (GRADE 40)	REINFORCING STEEL (GRADE 60)	PRECAST CONCRETE PILING (16" OCT)	METAL BRIDGE RAILING (TYPE A)	BRIDGE NAME PLATES (TYPE C)	REMODELING EXISTING BRIDGES
								CU. YD.	CU. YD.	CU. YD.	GAL.	LB.	LB.	LIN. FT.	LIN. FT.	EACH	LUMP SUM
2809R	1020	BIG CREEK				END BENTS 1 & 7	32	6.66				1116		208			
						INTERIOR BENTS 2-6		10.44				2144		580			
						2-81'-0" CONT. R.C. SLAB UNITS			311.50	16.2		35460		319.0	1		
						TOTAL FOR BRIDGE 2809R	32	17.10	311.50	16.2	3260	35460	788	319.0	1	0.33	
2809AR	1020	BIG CREEK				END BENTS 1 & 7	32	6.66				1116		208			
						INTERIOR BENTS 2-6		10.44				2144		580			
						2-81'-0" CONT. R.C. SLAB UNITS			311.50	16.2		35460		319.0	1		
						TOTAL FOR BRIDGE 2809AR	32	17.10	311.50	16.2	3260	35460	788	319.0	1	0.33	
2810R	1021	DRY BAYOU				END BENTS 1 & 4	32	6.66				1116		140			
						INTERIOR BENTS 2 & 3		4.14				854		140			
						81'-0" CONT. R.C. SLAB UNIT			156.10	8.1		17830		157.0	1		
						TOTAL FOR BRIDGE 2810R	32	10.80	156.10	8.1	1970	17830	280	157.0	1	0.17	
2810AR	1021	DRY BAYOU				END BENTS 1 & 4	32	6.66				1116		140			
						INTERIOR BENTS 2 & 3		4.14				854		140			
						81'-0" CONT. R.C. SLAB UNIT			156.10	8.1		17830		157.0	1		
						TOTAL FOR BRIDGE 2810AR	32	10.80	156.10	8.1	1970	17830	280	157.0	1	0.17	
TOTAL FOR JOB 11864								128	55.80	935.20	43.6	10,460	106,580	2136	952.0	4	1.00

\* SP REFERS TO SP 802-5

SCHEDULE OF BRIDGE QUANTITIES  
CLARKDALE - MISS. CO. LINE RECONST.  
CRITTENDEN COUNTY  
ROUTE 55 SEC. 11  
ARKANSAS STATE HIGHWAY COMMISSION  
LITTLE ROCK, ARK.

DRAWN BY: JCK DATE: 2-26-75  
CHECKED BY: JCK DATE: 2-27-75  
DESIGNED BY: JCK DATE: 2-26-75  
SCALE: None  
BRIDGE NO. 2809AR, 2809R, 2810AR & 2810R DRAWING NO. 19217

*David P. Puckett*  
BRIDGE ENGINEER





BAR LIST - PER BENT

### GENERAL NOTES

UNIT STRESSES: CLASS S CONCRETE (f<sub>c</sub>=10) 1,200 PSI  
REINFORCING STEEL (A515-40) 20,000 PSI

## PLAN

Scale: 3/8" = 1'-0"

ELEVATION

Scale:  $\frac{3}{8}'' = 1'-0''$

Scale: 25' = 1-0"  
(Looking Forward for Bridges 2807AR & 2810AR)  
(Looking Back for Bridges 2807AR & 2810AR)  
2-6

SECTION A-A

Scale: 1" = 10'

## SECTION B-B

Scale:  $\frac{3}{4}" = 1'-0"$

## SECTION C-C

Score:  $\frac{3}{4} = 1$  ✓

## SECTION D-D

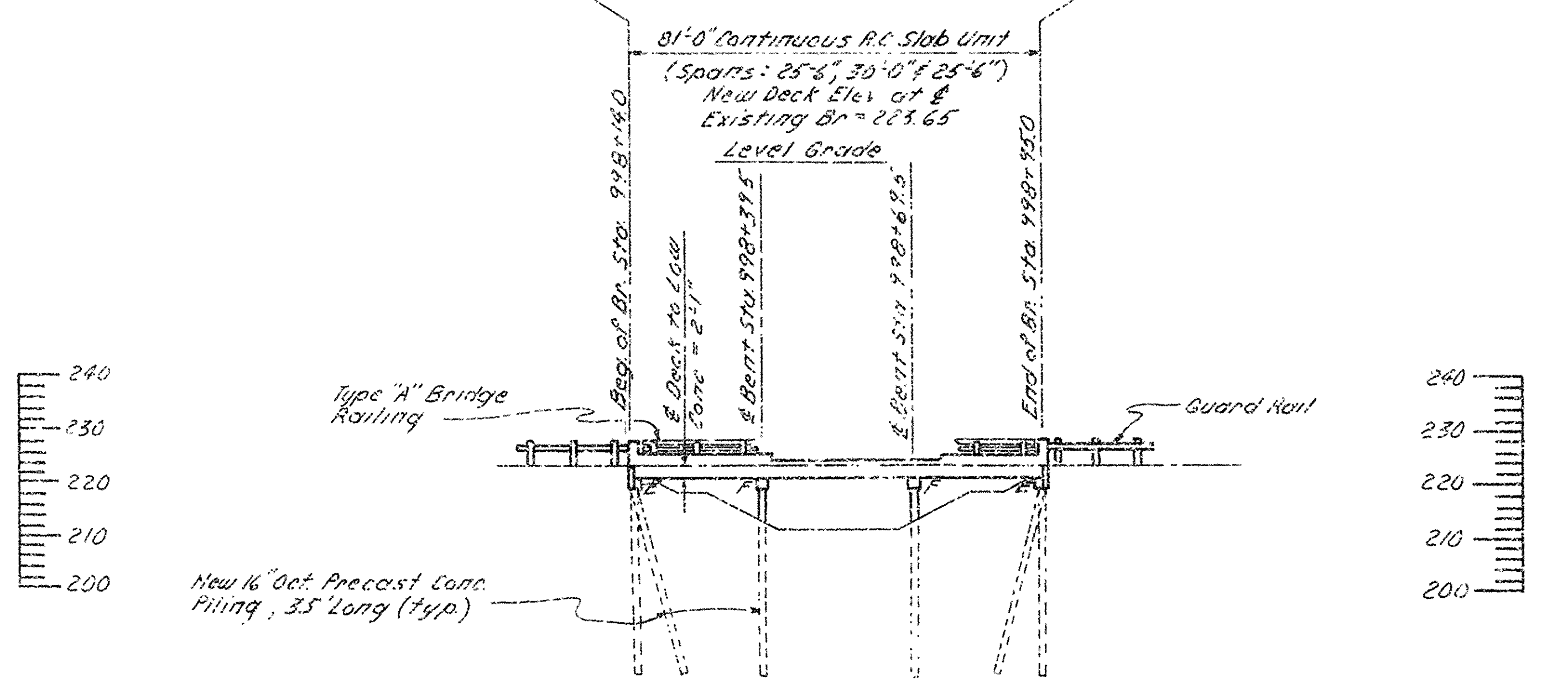
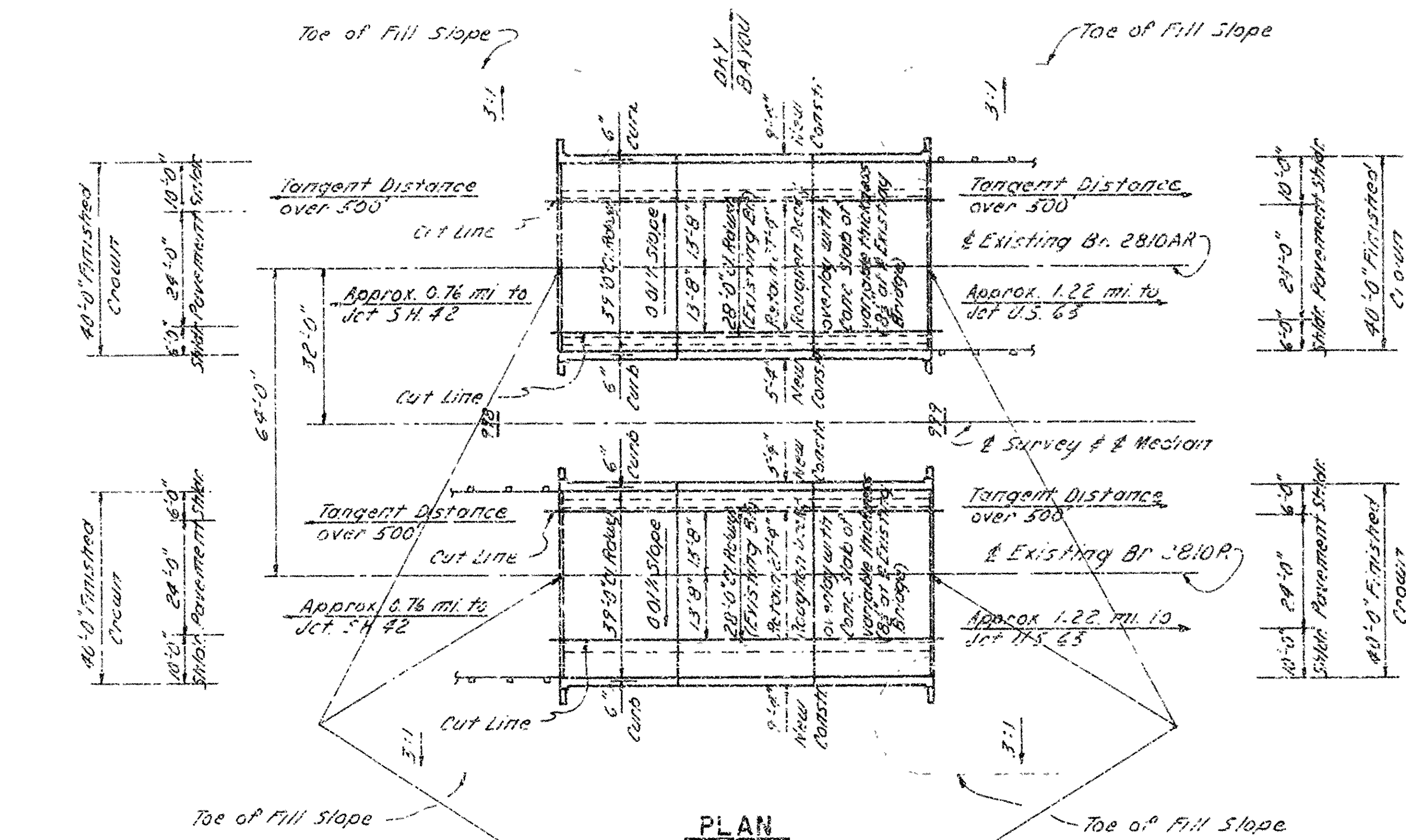
Scale:  $\frac{3}{4}" = 1'-0"$

LITTLE ROCK, ARK  
DRAWN BY: TES DATE: 2-18-75  
CHECKED BY: JCK DATE: 2-20-75 SCALE: As Noted  
DESIGNED BY: JCK DATE: 2-14-75  
BRIDGE NO. 2809R & 2809AR DRAWING NO. 1922  
2809R & 2809AR

DATE REVISION	DATE REVISION	DATE REVISION	DATE REVISION	FED. ROAD NO.	STATE	FED. AID PROJ. NO.	SHEET NO.	TOTAL SHEETS
				6	ARK.	D-55-1(19)17		
				JOB NO.	11864		16	39
① 2810AR, 2810R LAYOUT 19223								



Note: For R/W Data, Guard Rail and Approach Slabs & Butters - see R/Wy. Plans



GENERAL NOTES

BENCH MARK: "X" CUT ON SOUTH END OF BRIDGE END 13' LT. STA. 998+44, ELEV. 225.53.

ALL PILING SHALL BE 16" OCTAGONAL PRECAST CONCRETE AND SHALL BE DRIVEN WITH AN APPROVED AIR, STEAM, OR DIESEL HAMMER TO A MINIMUM BEARING CAPACITY OF 44 TONS PER PILE AND TO A MINIMUM PENETRATION OF 20' BELOW THE GROUND LINE. LENGTHS OF PILING SHOWN ARE BASED ON PILING DRIVEN IN THE EXISTING BRIDGE NO. 2810A.

ALL CONCRETE IN THE SUPERSTRUCTURE SHALL BE CLASS S (AR). ALL CONCRETE IN THE SUBSTRUCTURE SHALL BE CLASS S AND SHALL BE POURED IN THE DRY. ALL EXPOSED CORNERS SHALL BE CHAMFERED 3/4" UNLESS OTHERWISE NOTED.

THE CONTRACTOR SHALL MAKE CHECK MEASUREMENTS OF THE EXISTING BRIDGE AND MAKE ADJUSTMENTS NECESSARY TO FIT THE NEW WORK TO THE EXISTING STRUCTURE.

PLANS OF THE EXISTING STRUCTURE WILL BE MADE AVAILABLE TO THE CONTRACTOR UPON REQUEST.

FOR PLANS OF EXISTING STRUCTURE, SEE DWG. NO. 5385, 5386, 8013 & 8871.

FOR DETAILS OF WIDENING BENTS, SEE DWG. NO. 19219 & 19220.

FOR DETAILS OF WIDENING SPANS, SEE DWG. NO. 19224 & 19225.

SPECIFICATIONS: ARKANSAS STATE HIGHWAY COMMISSION'S STANDARD SPECIFICATIONS FOR HIGHWAY CONSTRUCTION, EDITION OF 1972 AND APPLICABLE SPECIAL PROVISIONS.

DESIGN SPECIFICATIONS: AASHTO 1973.

LIVE LOADING: HS20 AND SPECIAL INTERSTATE LOADING.

UNIT STRESSES:

SUPERSTRUCTURE: CLASS S (AR) CONCRETE (N=10)	1,400 PSI
REINFORCING STEEL (A615, GRADE 60)	24,000 PSI
SUBSTRUCTURE: CLASS S CONCRETE (N=10)	1,200 PSI
REINFORCING STEEL (A615, GRADE 40)	20,000 PSI

THE EXISTING PLATE GUARD RAIL IS TO BE SALVAGED AND SHALL REMAIN THE PROPERTY OF THE STATE.

LAYOUT OF BRIDGES OVER  
DRY BAYOU  
CLARKEDALE - MISS. CO. LINE RECONST.  
CRITTENDEN COUNTY  
ROUTE 55 SEC. 11  
ARKANSAS STATE HIGHWAY COMMISSION  
LITTLE ROCK, ARK.

DRAWN BY: J.P.S. DATE: 2-18-75  
CHECKED BY: J.C.K. DATE: 2-26-75  
DESIGNED BY: J.C.K. DATE: 2-75

BRIDGE NO. 2810AR & 2810R  
DRAWING NO. 19223

BRIDGE ENGINEER

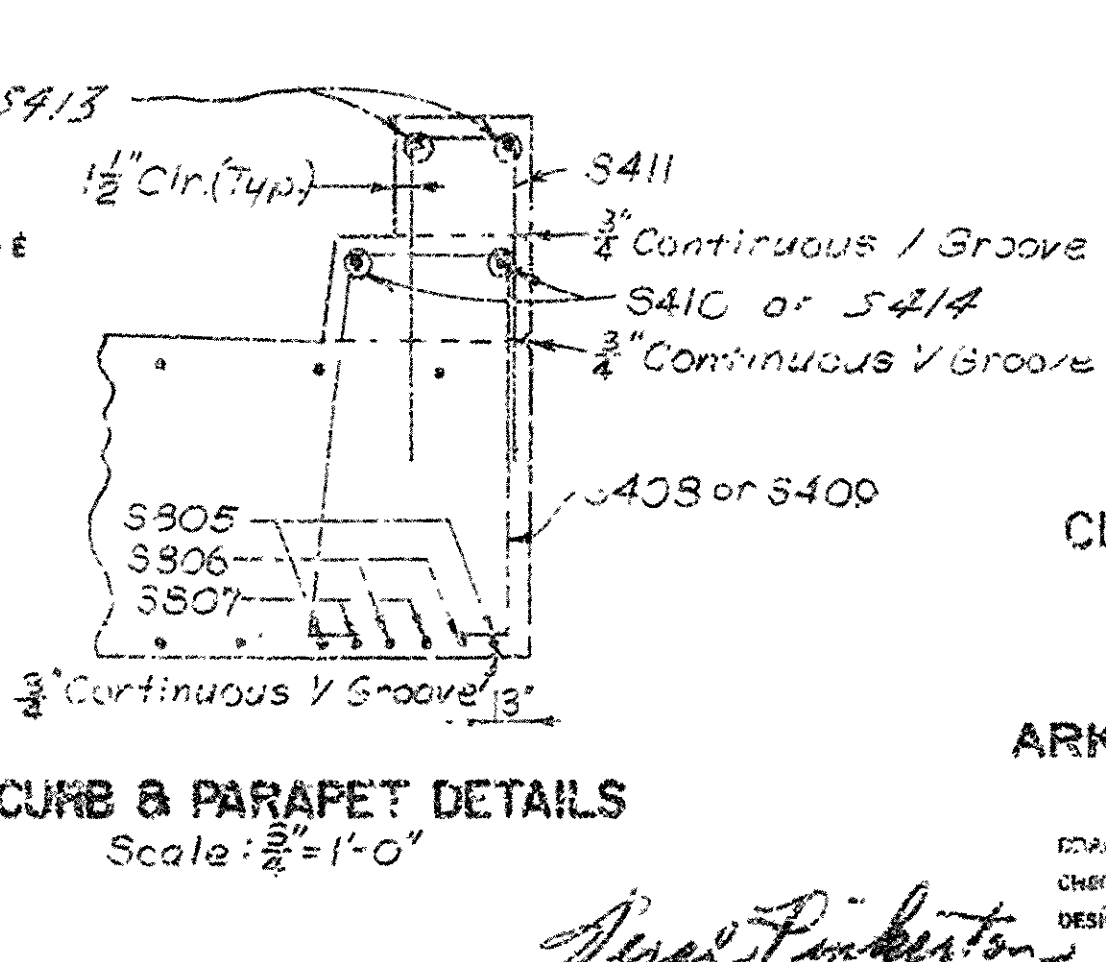
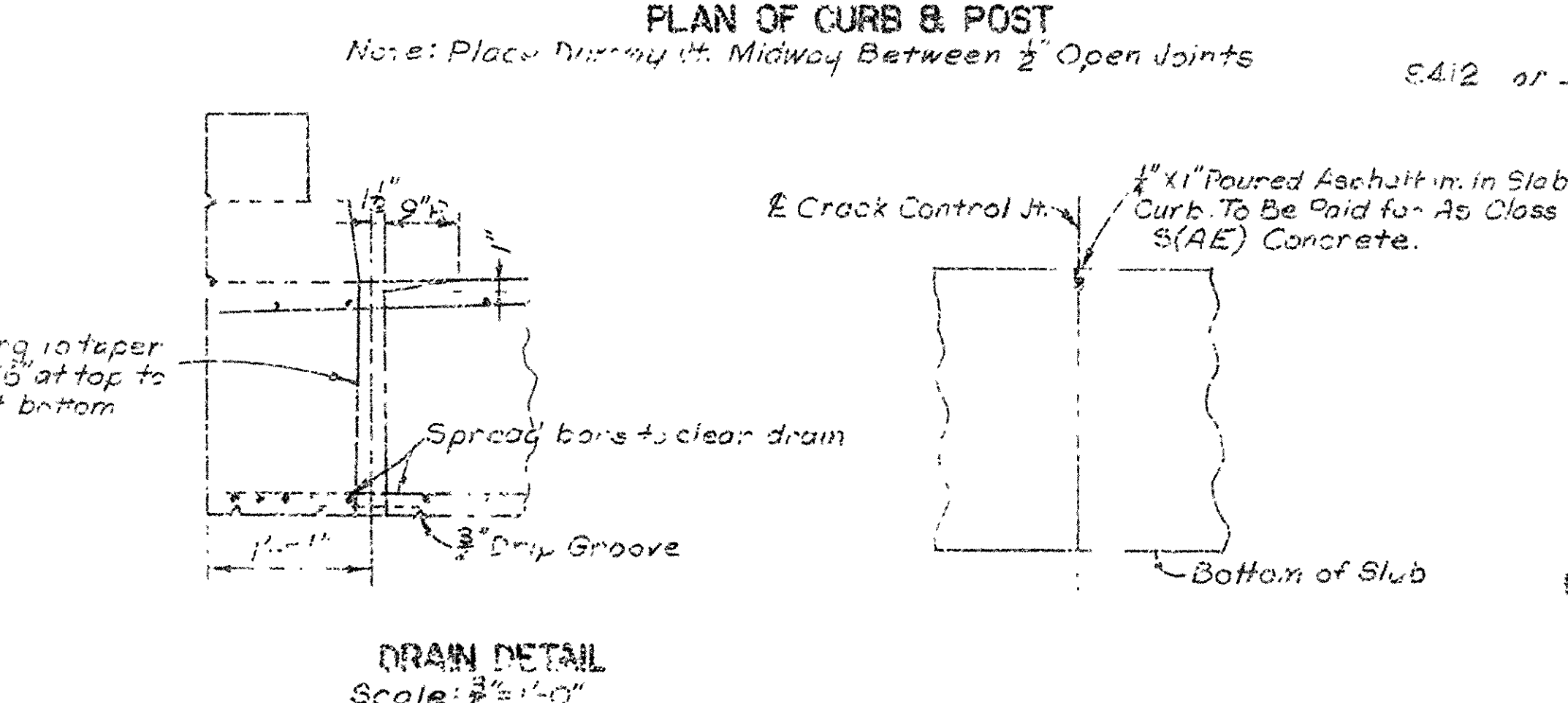
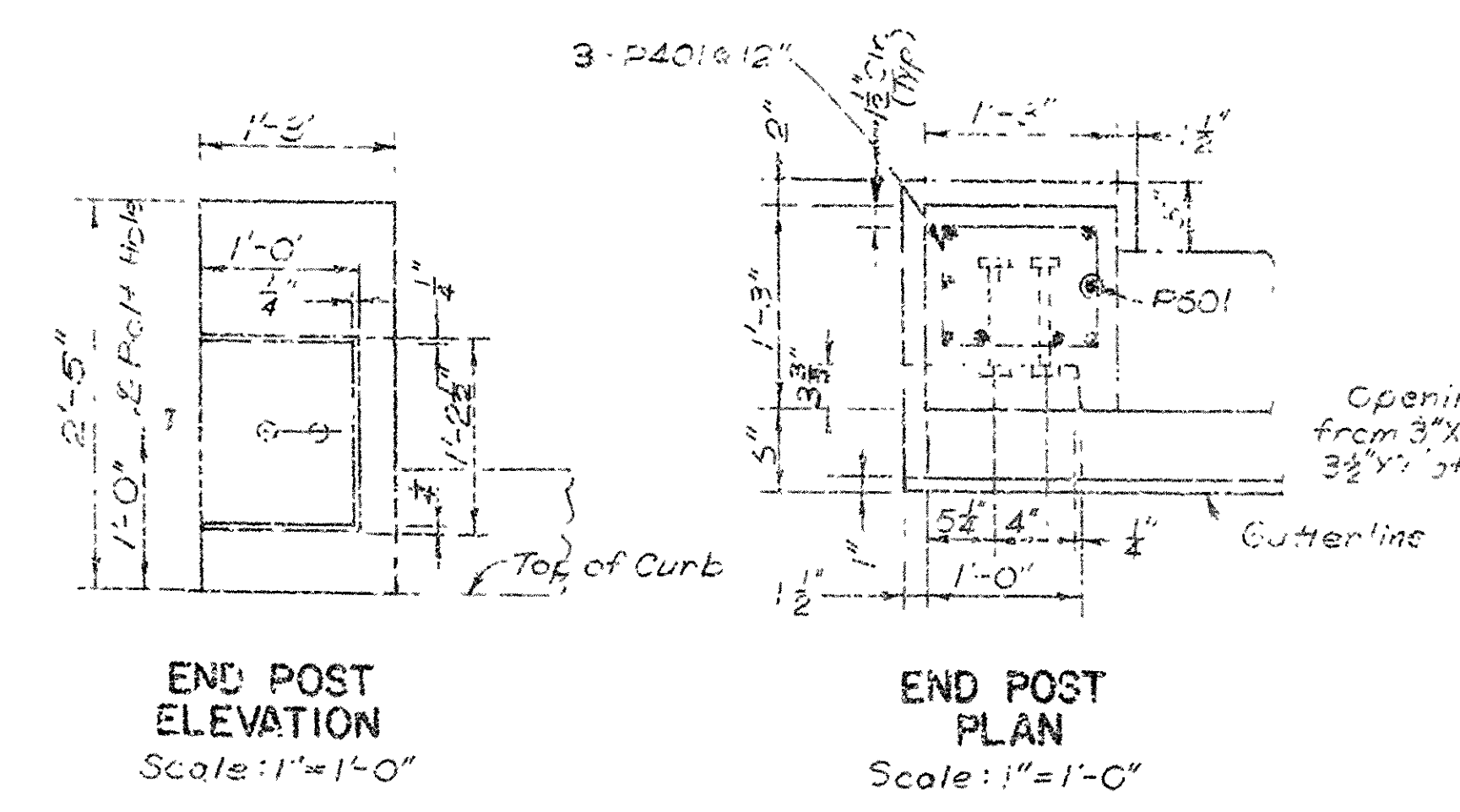
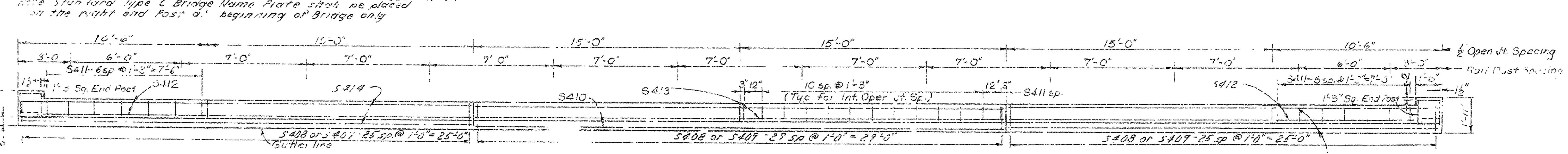
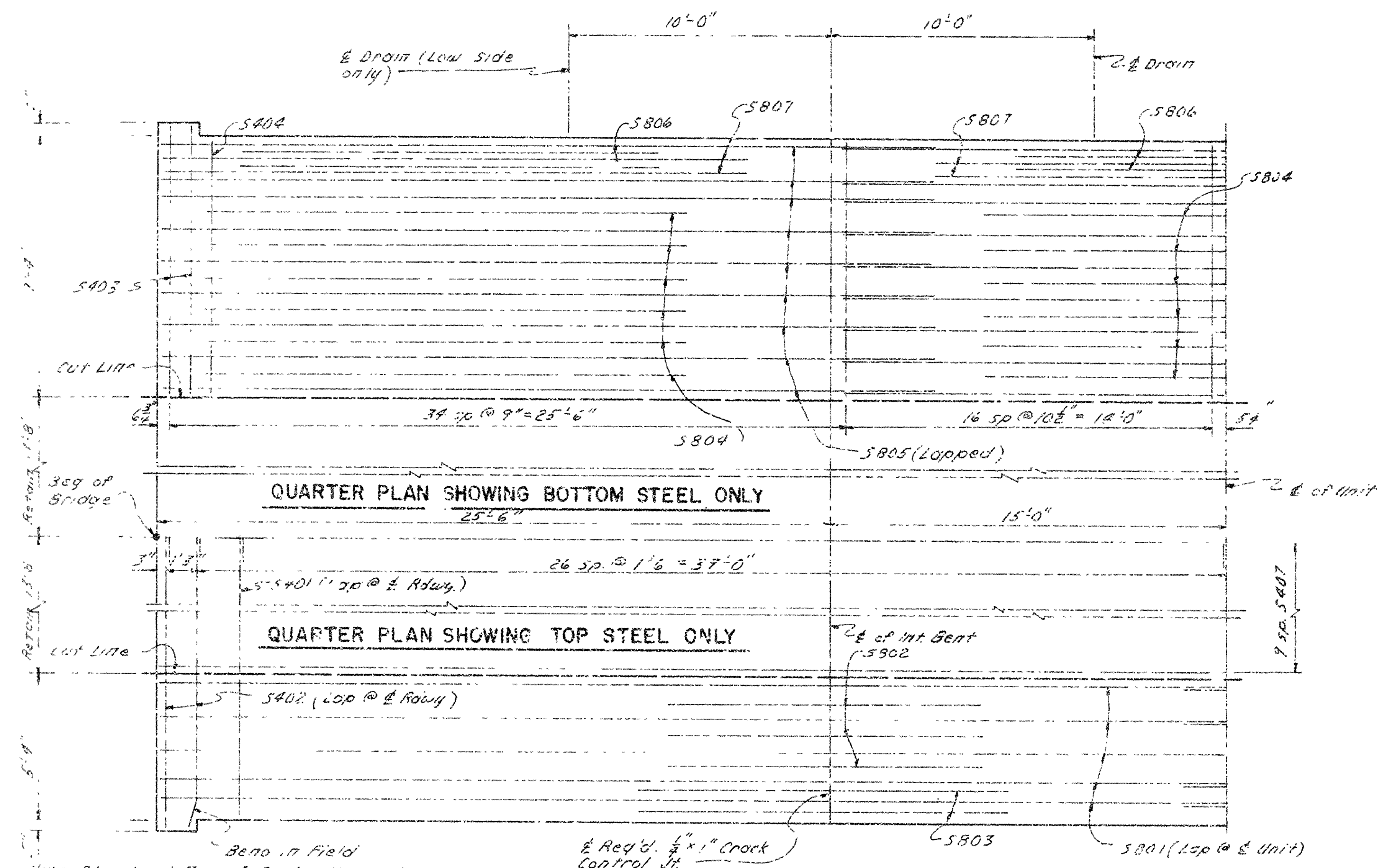


DATE DESIGNED	DATE FILLED	DATE REVISED	DATE FILLED	PREP. ROAD DIST. NO.	STATE	FED. AID PROJ. NO.	SHEET NO.	TOTAL SHEETS
				6	ARK.	1-15-(71)17		
				JOB NO.		11864	17	83
						2810AR, 2810R, 87 DTLS		19224

BAR LIST PER 8'-0" CONTINUOUS UNIT

Mark	No. Req'd	Length	Pin Dia.	Bending Diagrams
S401	102	21'-8"	5/8"	
S402	8	22'-1"	5/8"	
S403	4	7'-6"	5/8"	
S404	98	7'-1"	5/8"	
S405	4	5'-6"	5/8"	
S406	98	5'-1"	5/8"	
S407	57	28'-0"	5/8"	
S408	82	6'-0"	2"	
S409	32	6'-9"	2"	
S410	4	29'-8"	5/8"	
S411	132	4'-11"	2"	
S412	8	10'-0"	5/8"	
S413	16	14'-8"	5/8"	
S414	8	25'-2"	5/8"	
P401	12	4'-3"	2"	
P401	32	4'-0"	5/8"	
S701	588	2'-8"	5/8"	
S801	26	42'-0"	5/8"	
S802	13	12'-6"	5/8"	
S803	3	14'-8"	5/8"	
S804	27	13'-4"	5/8"	
S805	42	29'-0"	5/8"	
S806	12	16'-0"	5/8"	
S807	12	22'-0"	5/8"	

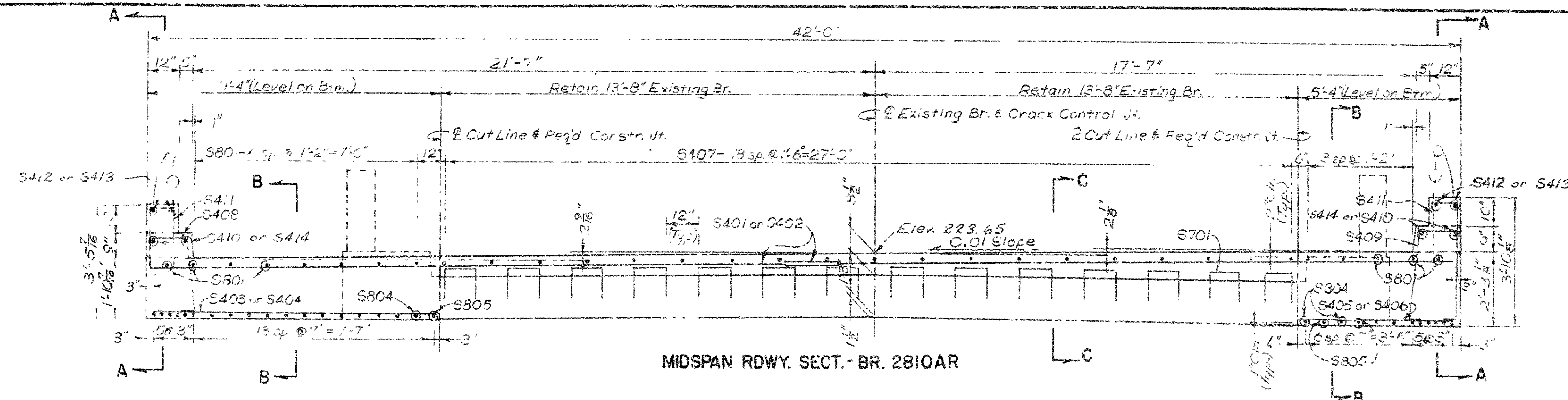
Dimensions are cut to suit of bars.



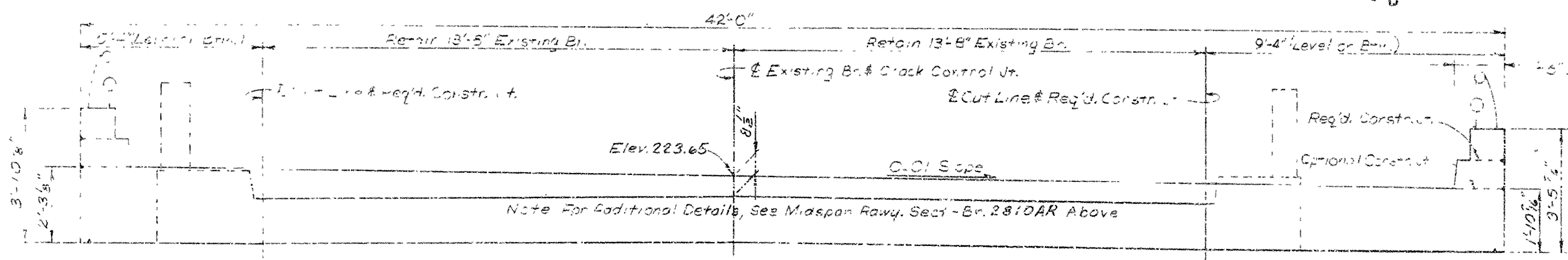
SHEET 1 OF 2  
 DETAILS OF 8'-0"  
 CONTINUOUS R C SLAB UNIT  
 BRIDGE OVER DRY CAYOU  
 CLARKDALE - MISS. CO. LINE RECONST  
 CRITTENDEN COUNTY  
 ROUTE 1-55 SEC. 11  
 ARKANSAS STATE HIGHWAY COMMISSION  
 LITTLE ROCK, ARK.  
 2-20-73  
 SCALE: 3/4"=1'-0" or as noted  
 DESIGNED BY: *David Pinkerton*  
 BRIDGE NO. 2810AR & 2810R  
 DRAWING NO 19224



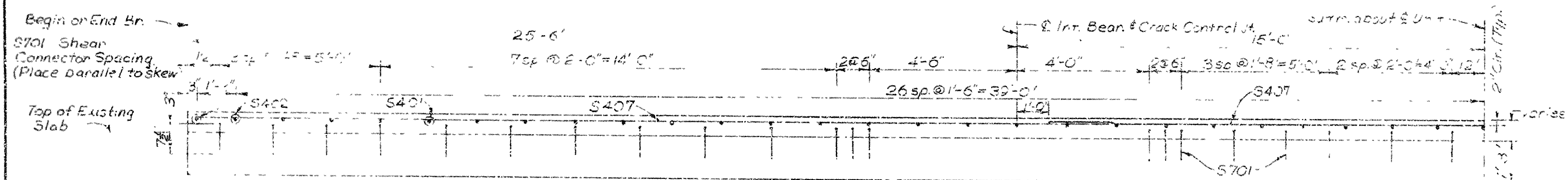
DATE REVISED	DATE FILMED	DATE REVISED	DATE FILMED	FED. ROAD DIST. NO.	STATE	FED. AID PROJ. NO.	SHEET NO.	TOTAL SHEETS
				6	ARK.	255-1(71)17		
						JOB NO.	11864	8 39
① 2810R/2810AR SPAN DETAILS 19225								



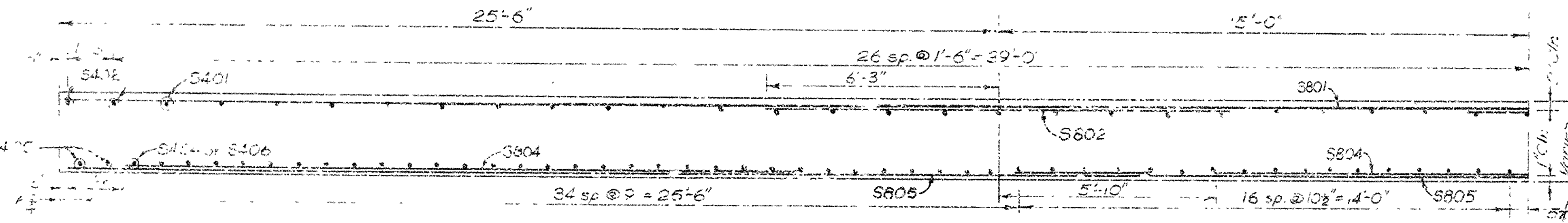
MIDSPAN RDWY. SECT. - BR. 2810AR



MIDSPAN RDWY. SECT. - BR. 2810 R



EXISTING SLAB W/ OVERLAY - SECT. C-C



TYP ELEV. OF SLAB - SECT. B-B

