

ITEM NO.	UNIT	COMMON EXCAVATION FOR STRUCTURE - BRIDGE	SP. 802	SP. 802	GLASS "S" (AF) CONCRETE	GLASS "S" (AF) CONCRETE	SP. 802	BOILED LAMINATED GIL	REINFORCING STEEL (A615 - 40)	REINFORCING STEEL (A615 - 40)	SP. 815*	METAL BRIDGE RAILING (TYPE A)	SP. 806	STRUCTURAL STEEL IN BEAM SPANS (A36)	SP. 807**	809	BRIDGE NAME PLATES (TYPE C)	SP. 810*	REMODELING EXISTING BRIDGES	DECK REPAIR	JOINT REPAIR	SP. 108	SP. 108	PAINTING EXISTING STRUCTURAL STEEL
END BEAMS 1 & 2	21	14.40	14.40	0.2	0.2	0.2	0.2	10.20	10.20	110	140	140	140	140	140	70.0	1	24	0.45	340.0	76.5	108.25	108.25	108.25
SPANS 1 & 2	21	14.50	14.50	0.2	0.2	0.2	0.2	10.20	10.20	110	140	140	140	140	140	70.0	1	24	0.45	340.0	76.5	108.25	108.25	108.25
TOTAL FOR BRIDGE NO. 20741	21	14.40	14.40	0.2	0.2	0.2	0.2	10.20	10.20	110	140	140	140	140	140	70.0	1	24	0.45	340.0	76.5	108.25	108.25	108.25
END BEAMS 1 & 2	21	14.50	14.50	0.2	0.2	0.2	0.2	10.20	10.20	110	140	140	140	140	140	70.0	1	24	0.45	340.0	76.5	108.25	108.25	108.25
SPANS 1 & 2	21	14.50	14.50	0.2	0.2	0.2	0.2	10.20	10.20	110	140	140	140	140	140	70.0	1	24	0.45	340.0	76.5	108.25	108.25	108.25
TOTAL FOR BRIDGE NO. 20741	21	14.40	14.40	0.2	0.2	0.2	0.2	10.20	10.20	110	140	140	140	140	140	70.0	1	24	0.45	340.0	76.5	108.25	108.25	108.25
END BEAMS 1 & 2	21	14.50	14.50	0.2	0.2	0.2	0.2	10.20	10.20	110	140	140	140	140	140	70.0	1	24	0.45	340.0	76.5	108.25	108.25	108.25
SPANS 1 & 2	21	14.50	14.50	0.2	0.2	0.2	0.2	10.20	10.20	110	140	140	140	140	140	70.0	1	24	0.45	340.0	76.5	108.25	108.25	108.25
TOTAL FOR BRIDGE NO. 20741	21	14.40	14.40	0.2	0.2	0.2	0.2	10.20	10.20	110	140	140	140	140	140	70.0	1	24	0.45	340.0	76.5	108.25	108.25	108.25
END BEAMS 1 & 2	21	14.50	14.50	0.2	0.2	0.2	0.2	10.20	10.20	110	140	140	140	140	140	70.0	1	24	0.45	340.0	76.5	108.25	108.25	108.25
SPANS 1 & 2	21	14.50	14.50	0.2	0.2	0.2	0.2	10.20	10.20	110	140	140	140	140	140	70.0	1	24	0.45	340.0	76.5	108.25	108.25	108.25
TOTAL FOR BRIDGE NO. 20741	21	14.40	14.40	0.2	0.2	0.2	0.2	10.20	10.20	110	140	140	140	140	140	70.0	1	24	0.45	340.0	76.5	108.25	108.25	108.25
END BEAMS 1 & 2	21	14.50	14.50	0.2	0.2	0.2	0.2	10.20	10.20	110	140	140	140	140	140	70.0	1	24	0.45	340.0	76.5	108.25	108.25	108.25
SPANS 1 & 2	21	14.50	14.50	0.2	0.2	0.2																		

SCHEDULE OF BRIDGE QUANTITIES
WEST MEMPHIS-CLARKDALE RECONSTRUCTION
CRITTENDEN COUNTY

ROUTE 55 SEC. 11

ARKANSAS STATE HIGHWAY COMMISSION

* * * FOR DESIGNATION OF MAIN LOAD-CARRYING MEMBERS FOR SF 807-4, MANDATORY NOTCH TOUGHNESS FOR BRIDGE STEELS, SEE DWG. NO. 18753.

DRAWN BY: T.E.B. DATE: 6/20/74 SCALE: NONE

CHECKED BY: DV DATE: 6-30-74

BRIDGE NO. 2671R, 2671AR
2671R, 2671AR
331BR, 331BR
2808R, 2808AR
DRAWING NO. 13743

BRIDGE ENGINEER

2808R, 2608AR LAYOUTS 18754

SENCH MARK: "□" CUT ON DROP INLET ON E STA. 496+54, ELEV. 216.03.

THE CONTRACTOR SHALL MAKE CHECK MEASUREMENTS OF THE EXISTING BRIDGE AND MAKE ADJUSTMENTS NECESSARY TO FIT THE NEW WORK TO THE EXISTING STRUCTURE.

PLANS OF THE EXISTING STRUCTURE WILL BE MADE AVAILABLE TO THE CONTRACTOR UPON REQUEST.

FOR PLANS OF EXISTING STRUCTURE, SEE DWG. NO. 8011, 5451, 5452, 5355 & C869.

FOR DETAILS OF WIDENING BENTS, SEE DWG. NO. 18755 & 18756
FOR DETAILS OF WIDENING SPANS, SEE DWG. NOS. 18757 & 18758

SPECIFICATIONS: ARKANSAS STATE HIGHWAY COMMISSION STANDARD SPECIFICATIONS FOR HIGHWAY CONSTRUCTION, EDITION OF 1972 AND APPLICABLE SPECIAL PROVISIONS.

DESIGN SPECIFICATIONS: AASHTO 1973
LIVE LOADING: HS20 AND SPECIAL INTERSTATE LOADING

SUPERSTRUCTURE: CLASS SAE CONCRETE (N=10) 1,400 PSI
REINFORCING STEEL (A615, GRADE 60) 24,000 PSI

SUBSTRUCTURE: CLASS 5 CONCRETE (N=10) 1,200 PSI
REINFORCING STEEL (A615, GRADE 40) 20,000 PSI

NOTE: "Elevation" is typical for both
bridges except as noted.

Bent No.:

ELEVATION

LAYOUT OF BRIDGES OVER
FIFTEEN MILE BAYOU
W. MEMPHIS - CLARKSDALE RECONST.
CRITTENDEN COUNTY
ROUTE I-55 SEC. II
ARKANSAS STATE HIGHWAY COMMISSION

BRIDGE NO. 2808R
DRAWING NO. 18754

DRAWN BY: _____
 TRACED BY: _____
 CHECKED BY: ELF
 DATE: APR 74

BRIDGE ENGINEER

GRAMAM BLUE PRINT - 7-72-500

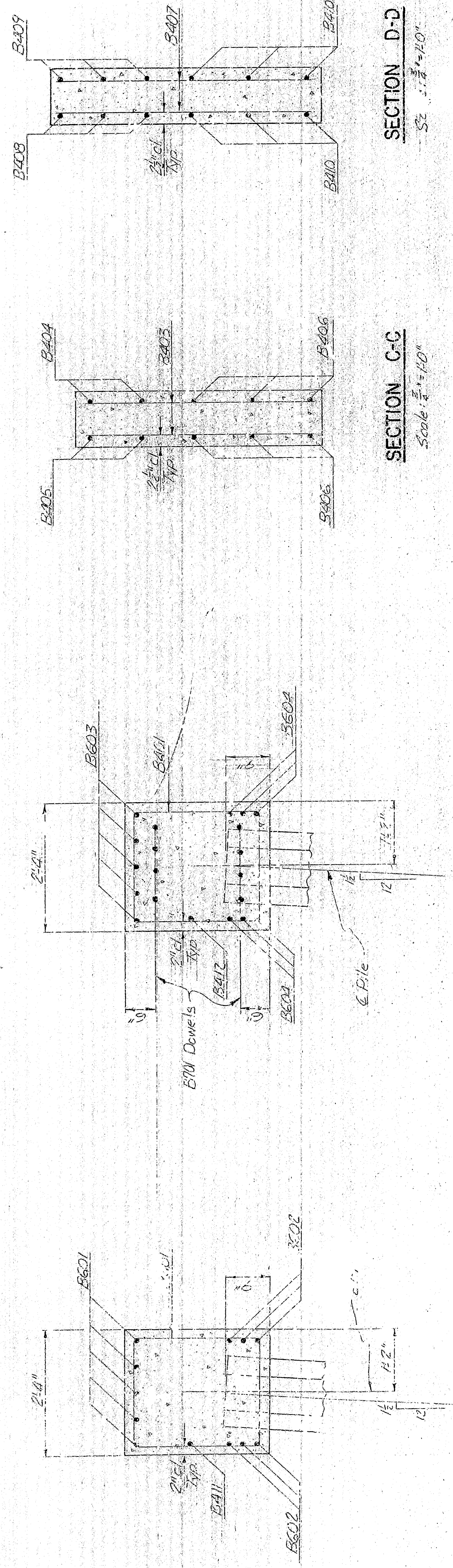
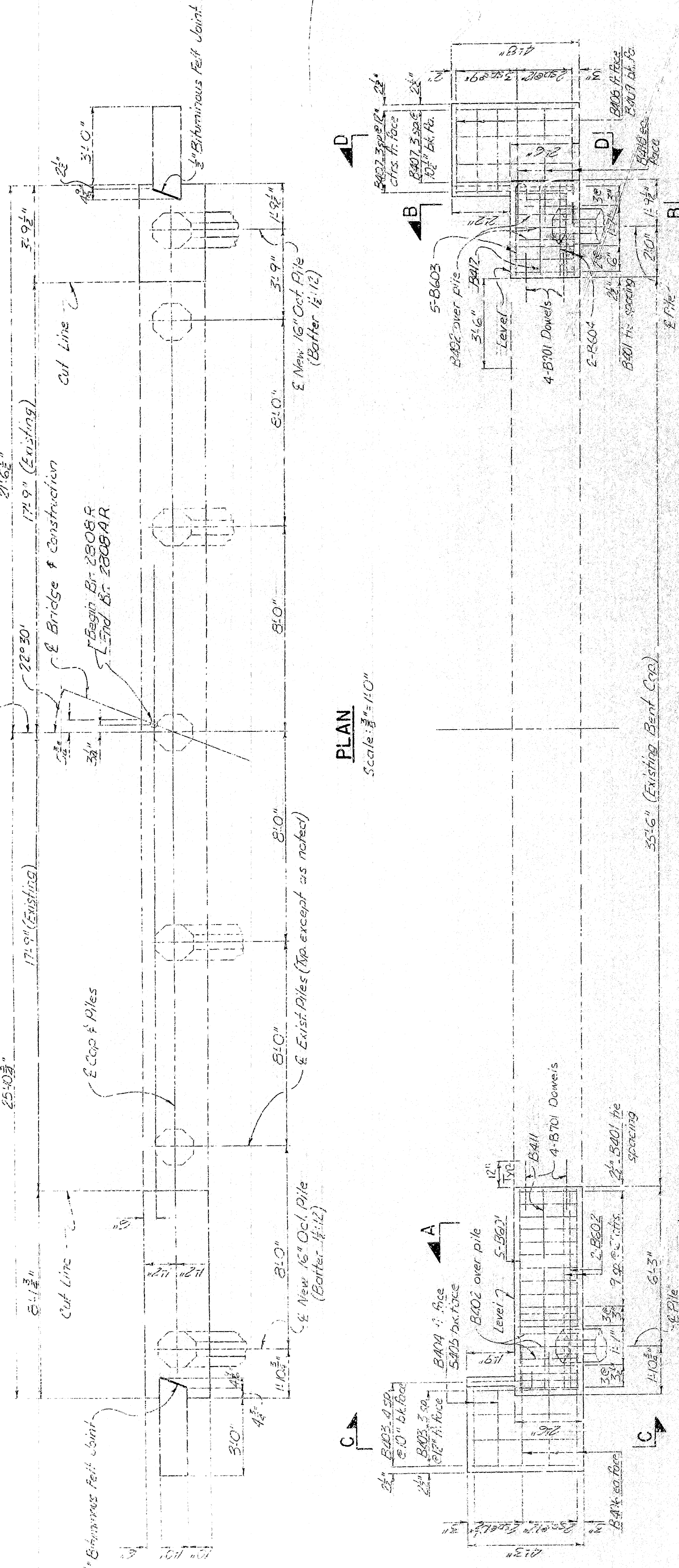
DATE REVIEWED	DATE FILMED	DATE REVISED	DATE FILMED	FED. AGID DIVISION	STATE	FED. AID PROJ. NO.	SHEET NO.	TOTAL SHEETS
				6		155-16017	61	126

200R 380AR BEN DITLS 18756

BAR LIST PER BENI		
MARK	1/2 REQ'D	LENGTH PER CH.
B201	24	3'10" 2'
B202	6	6'2" 2"
B203	9	5'11" 5 1/4
B304	2	3'11" 5 1/4
B405	2	3'7" 5 1/4
B406	6	4'6" 5 1/4
B407	3	4'2" 5 1/4
B408	3	3'3" 5 1/4
B409	3	2'11" 5 1/4
B410	6	4'5" 5 1/4
B411	1	7'2" 5 1/4
B501	5	4'9" 4'2"
B602	6	7'11" 5'3"
B603	5	4'3" 4'2"
B604		3'6" 4'2"
B412	1	2'6" 5 1/4
B701	16	2'3" 5 1/4

GENERAL NOTES

STRIP, CLEAN, AND RETAIN EXISTING 2" MIN. WALL REINFORCEMENT EXTENDING FROM THE EXISTING
END BENT CAP INTO THE NEW CAP A MINIMUM OF 2'-0".
ALL NEW CONCRETE IN THE : SUBSTRUCTURE WILL BE CLASS S. ALL EXPOSED CORNERS WILL BE
CHAMFERED 3/4" UNLESS OTHERWISE NOTED.
NEW REINFORCING SHALL BE ASTM A615, GRADE 40. SHOP LISTS AND BENDING DIAGRAMS MUST
BE SUBMITTED AND APPROVED BEFORE FABRICATION IS BEGUN.
IN GENERAL, ALL CONSTRUCTION JOINTS SHALL BE HORIZONTAL AND PROVIDED WITH KEYS NOT
LESS THAN 1-1/2" HIGH COVERING THE MIDDLE THIRD OF BOTH DIRECTIONS.
FOR ADDITIONAL GENERAL NOTES, SEE BRIDGE LAYOUT DRAWING NO. 18754.
UNIT STRESS: CLASS S CONCRETE (0=40) 1,200 PSI
REINFORCING (A615=40) 20,000 PSI



SECTION D-2

SECTION C-C
Scale: $\frac{3}{4}'' = 1'-0''$

SECTION B-B
Scale: $\frac{3}{4}'' = 1'-0''$

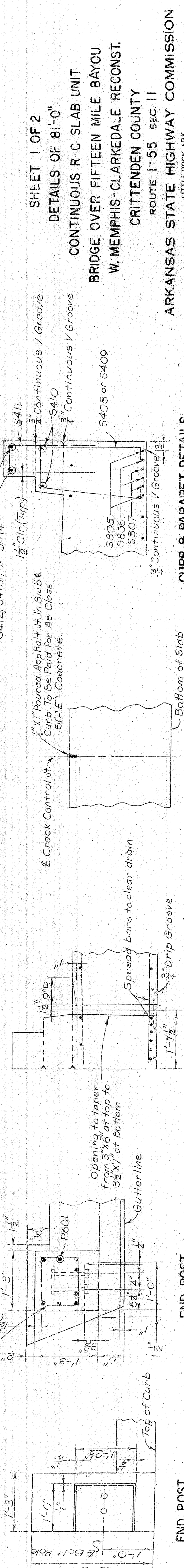
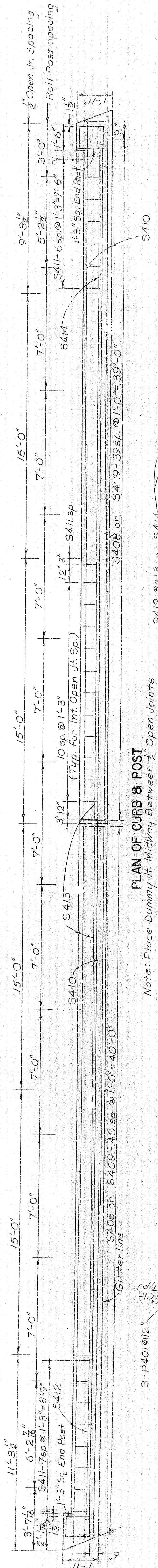
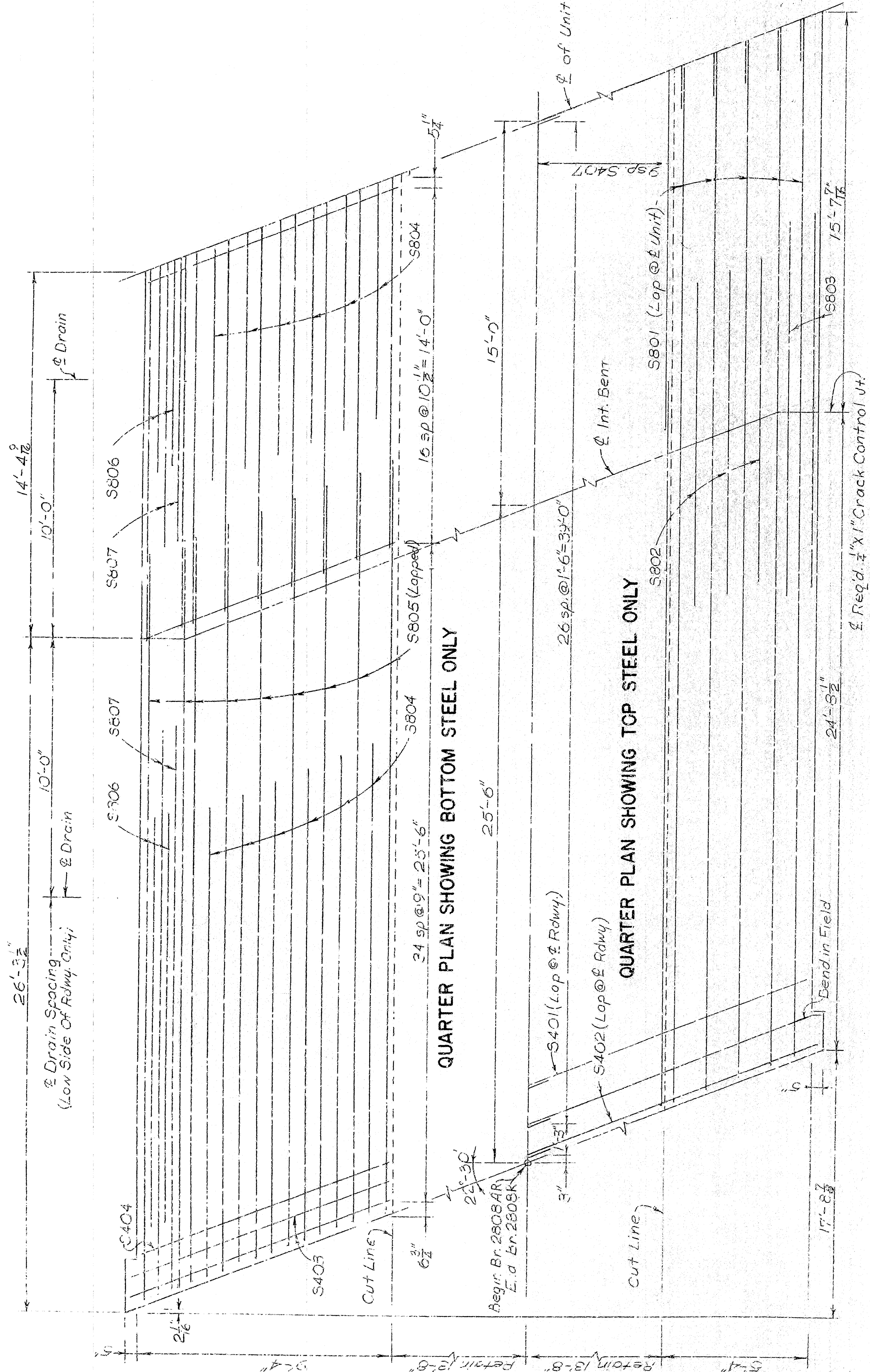
SECTION: A-A
Scale: 3/4" = 1'-0"

SHEET 2 OF 2
DETAILS FOR WIDENING BENTS
BRIDGE OVER FIFTEEN MILE BAYOU
W. MEMPHIS - CLARKDALE RECONST.
CRITTENDEN COUNTY
ROUTE 1-55 SEC. 11

ARKANSAS STATE HIGHWAY COMMISSION

DRAWN BY: *K.M.S.* DATE: *11 Jan 74* SCALE: *As Shown*
CHECKED BY: *E.E.* DATE: *15 Jan 74*
DESIGNED BY: *E.E.* DATE: *2 Jan 74*

Mark	No. Req'd.	Length	Pin Dia.
S401	102	23'-4"	5/8"
S402	8	23'-10"	5/8"
S403	4	13'-1"	5/8"
S404	98	9'-9"	5/8"
S405	4	5'-10"	5/8"
S406	98	5'-5"	5/8"
S407	57	28'-0"	5/8"
S408	82	5'-0"	2"
S409	82	6'-9"	2"
S410	16	21'-4"	5/8"
S411	134	4'-11"	2"
S412	4	9'-0"	5/8"
S413	16	14'-8"	5/8"
S414	4	8'-0"	5/8"
P401	12	4'-3"	2"
P601	32	4'-0"	5/8"
S701	586	2'-6"	4"
S801	26	42'-0"	5/8"
S902	18	12'-6"	5/8"
S903	8	14'-6"	5/8"
S904	27	13'-4"	5/8"
S905	42	29'-0"	5/8"
S906	12	16'-0"	5/8"
S907	12	22'-0"	5/8"



END POST
ELEVATION
Scale: 1" = 1'-0"

END POST
PLAN
Scale: 1" = 1'-0"

Bottom of Slab

CURB & PARAPET DETAILS
Scale: $\frac{3}{4}$ " = 1'-0"

BRIDGE ENGINEER

DRAIN DETAIL
Scale: $\frac{3}{4}$ " = 1'-0"

DRAWN BY: E.T.F. DATE: 23 Nov 73
CHECKED BY: D.V. DATE: 1-2-74 SCALE: 3/4" = 1'-0" or 25' noted
DESIGNED BY: E.T.F. DATE: 10 SEP 73

BRIDGE NO. 2808R
DRAWING NO. 18757

GENERAL NOTES

STRIP, CLEAN AND RETAIN EXISTING TOP AND BOTTOM TRANSVERSE REINFORCING EXTENDING FROM THE CUT LINES INTO THE NEW SLAB A MINIMUM OF 2'-0".

ALL NEW CONCRETE IN THE SUPERSTRUCTURE WILL BE CLASS S(AE). ALL EXPOSED CORNERS WILL BE CHAMFERED 3/4" UNLESS OTHERWISE NOTED.

NEW REINFORCING STEEL SHALL BE ASTM A 615, GRADE 60. SHOP LISTS AND BENDING DIAGRAM MUST BE SUBMITTED AND APPROVAL SECURED BEFORE FABRICATION IS BEGUN.

WIRE SUPPORTS FOR REINFORCING BARS WILL NOT BE PAID FOR DIRECTLY, BUT WILL BE CONSIDERED SUBSIDIARY TO THE ITEM REINFORCING STEEL. SHOP LISTS AND DIAGRAMS OF WIRE SUPPORTS MUST BE SUBMITTED FOR APPROVAL BEFORE FABRICATION IS BEGUN.

BEAM BOLSTERS AND HIGH CHAIRS SHALL HAVE A MAXIMUM LONGITUDINAL AND TRANSVERSE SPACING OF 4'-0".

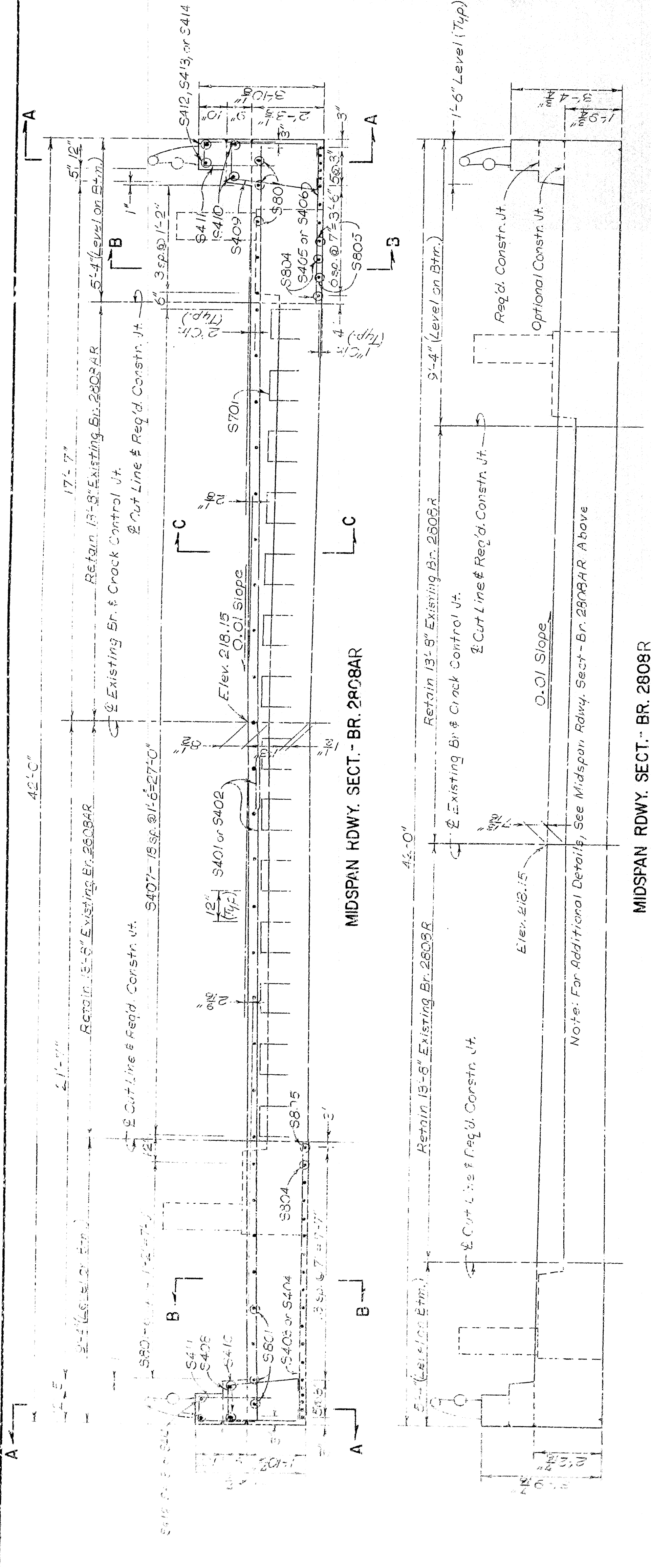
DEAD LOAD DEFLECTION FOR THE THREE SPAN UNIT IS NEGLIGIBLE.

FOR ADDITIONAL GENERAL NOTES, SEE BRIDGE LAYOUT DRAWING NO. 18754.
FOR DETAILS OF TYPE A BRIDGE RAILING, SEE DWG. NO. 14992A.

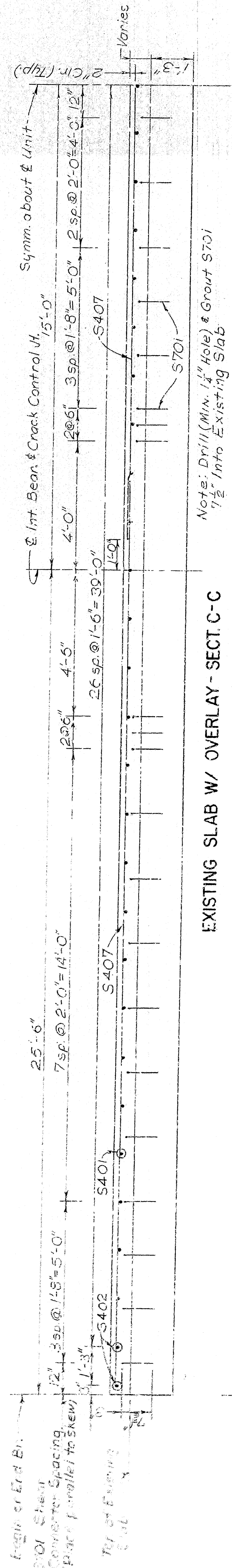
SPECIFICATIONS: ARKANSAS STATE HIGHWAY COMMISSION STANDARD SPECIFICATIONS FOR HIGHWAY CONSTRUCTION, EDITION OF 1972 AND APPLICABLE SPECIAL PROVISIONS.

DESIGN SPECIFICATIONS: **AASHTO**
LASTING TO 1973
 LIVELOAD: 0.1812 WHEELS/FT. OF WIDTH PLUS 30% IMPACT.
 11320

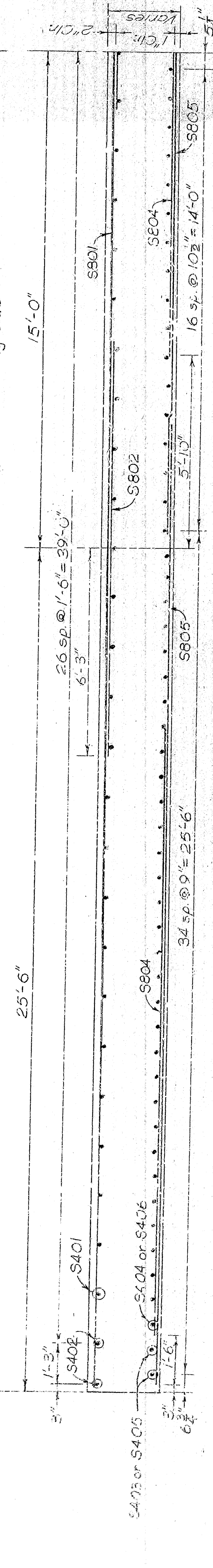
UNIT STRESSES	CLASS (A-E) CONCRETE (N=10)	1,400 PSI
	REINFORCING STEEL (A615, GRADE 60)	24,000 PSI



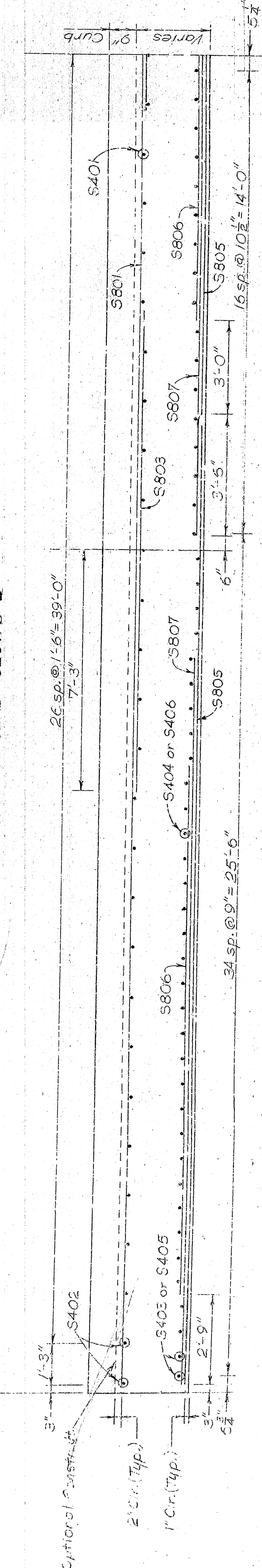
MIDSPAN RDWY. SECT.- BR. 2808R



EXISTING SLAB W/ OVERLAY - SECT. C-C



TYP. ELEV. OF SLAB - SECT. P-B



EDGE BEAM ELEV. - SECT. A-A

SHEET 2 OF 2
DETAILS OF 31'-0"

CONTINUOUS R C SLAB UNIT

BRIDGE OVER FIFTEEN MILE BAYOU

W. MEMPHIS-CLARKDALE RE

BRITTENDEN COUNTY

ROUTE 1-55 SEC. 11

LITTLE ROCK, ARK.

DRAWN BY: ELF DATE: 20 NOV 73
CHECKED BY: DV DATE: 1-4-74
DESIGNED BY: ELF DATE: 10 Sep 73
SCALE: $\frac{1}{2}'' = 1'-0''$ OR AS NOTED

2025 RELEASE UNDER E.O. 14176

DRAWING NO. 18758

2008

BRIDGE NO.

[Signature]
BRIDGE ENGINEER