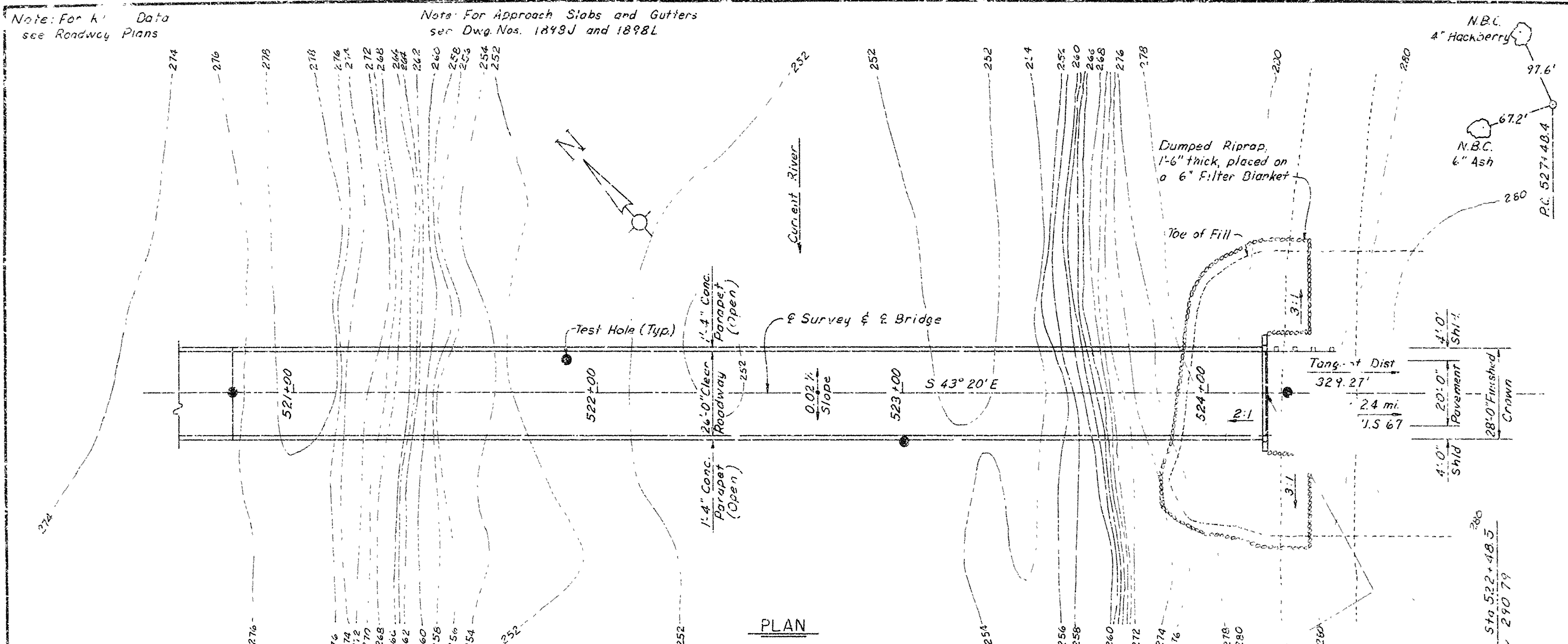


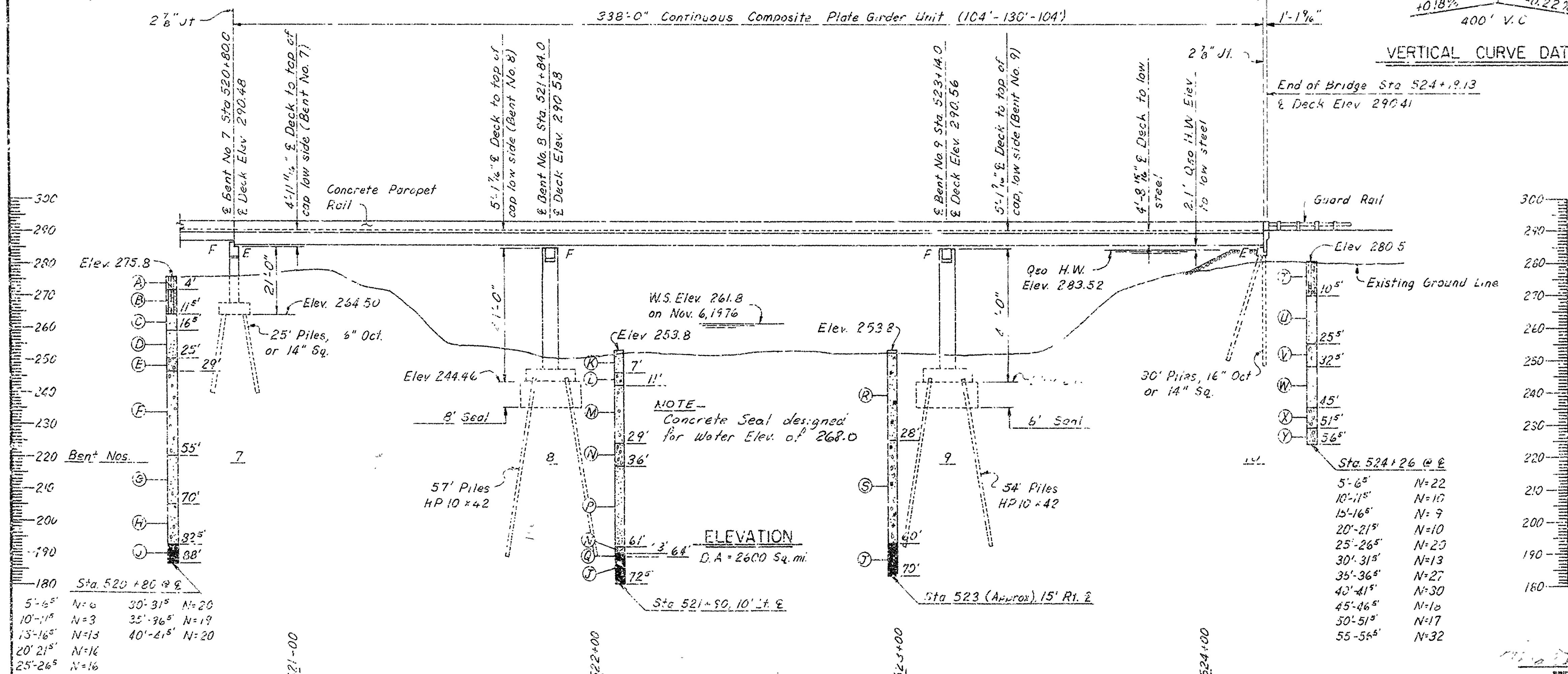
Note: For k' Data
see Roadway Plans

Note: For Approach Slabs and Gutters
see Dwg. Nos. 1849J and 1898L



Total Length of Bridge = 724'-2 1/8"

338'-0" Continuous Composite Plate Girder Unit (104'-130'-104')



BOYING LSCND

- A MOIST, SOFT, BROWN SANDY, SILTY CLAY
D MOIST, LOOSE, BROWN SANDY SILT
C MOIST, MEDIUM DENSE, BROWN FINE SAND
D MOIST, MEDIUM DENSE, BROWN SAND
E WET, MEDIUM DENSE, BROWN GRAVELLY SAND
F WET, MEDIUM DENSE, SANDY GRAVEL
G WET, DENSE, BROWN SANDY GRAVEL
H WET, DENSE, BROWN SAND GRAVEL AND GRAVEL
I HARD, GRAY DOLOMITE
K WET, MEDIUM DENSE, BROWN SAND
L WET, MEDIUM DENSE, GRAY SAND WITH BLACK DRIFT MATERIAL
M WET, MEDIUM DENSE, GRAY SAND WITH SMALL AMOUNT OF GRAVEL
N WET, DENSE, GRAY AND BROWN SANDY GRAVEL
O WET, DENSE, GRAY SAND
P HARD, GRAY WEATHERED DOLOMITE
Q WET, MEDIUM DENSE, BROWN TO GRAYS W/DRIFT MATERIAL
S WET, DENSE, GRAY AND BROWN SANDY GRAVEL WITH A SMALL AMOUNT OF DRIFT MATERIAL
T MOIST, MEDIUM DENSE, BROWN SILTY SAND WITH A SMALL AMOUNT OF GRAVEL
U MOIST TO WET, LOOSE, BROWN SAND
V WET, MEDIUM DENSE, BROWN SAND AND GRAVEL WITH A SMALL AMOUNT OF GRAVEL
WET, DENSE, BROWN SAND
X WET, MEDIUM DENSE, GRAY SANDY GRAVEL WITH A SMALL AMOUNT OF GRAVEL
Y WET, MEDIUM DENSE, BROWN SAND AND GRAVEL

GENERAL NOTES

FL 16H 162BK 3 13 15" PECAN 150' RT. STA 531-15. LEV 27 40

ALL COMPLETE EXCEPT THE SEAL TO CRATE. FIVE (5) GALLONS OF COOLANT DRY. ALL EXPOSED COILS WERE CHARGED 24 HOURS WITH REFRIG.

FILING PRESENTS US WITH TWO DIFFICULTIES: ONE CONCERNING THE
 THE SHARP CORNERS OF THE FILING, AND THE OTHER CONCERNING THE
 MINIMUM BEARING CAPACITY OF 40 TONS PER SQUARE FOOT. THE LENGTH OF
 THE FILING PRESENTS US WITH TWO DIFFICULTIES: ONE CONCERNING THE
 THE SHARP CORNERS OF THE FILING, AND THE OTHER CONCERNING THE
 MINIMUM BEARING CAPACITY OF 40 TONS PER SQUARE FOOT. THE LENGTH OF
 THE FILING PRESENTS US WITH TWO DIFFICULTIES: ONE CONCERNING THE
 THE SHARP CORNERS OF THE FILING, AND THE OTHER CONCERNING THE
 MINIMUM BEARING CAPACITY OF 40 TONS PER SQUARE FOOT. THE LENGTH OF

[illegible]

FILES MAY BE DRAWN WITH FOLLOWERS, EXCEPT TWO FILES OUT OF A WHOLEY
WHICH, WITHOUT FOLLOWERS TO DETERMINED THE VERIFICATION OF ANY OF
THE GROUP LENGTH OF THE LONG PILES SHALL BE 100 PILES. IN THE CASE
THE PILES FOR PAYMENT SHALL BE THE PILES IN THE LONG PILES. IN THE CASE
THE PILES ARE ASSIGNED FOR THE LONG PILES. IN THE CASE THE PILES
THE LONG PILES THE PILES

PLS FOR INFO. TO STATE OF VA. ATTENTION: THE ATTORNEY GENERAL'S OFFICE
IS IN PLACE

FOR DETAILS OF FURTHER INFORMATION, SEE THE 1960-1961 YEAR BOOK
FOR DETAILS OF THE 1960-1961 YEAR BOOK, SEE THE 1960-1961 YEAR BOOK
FOR DETAILS OF THE 1960-1961 YEAR BOOK, SEE THE 1960-1961 YEAR BOOK

FOR HIGHWAY CONSTRUCTION, 1962, 1963, 1964, 1965, 1966, 1967, 1968, 1969, 1970, 1971, 1972, 1973, 1974, 1975, 1976, 1977, 1978, 1979, 1980, 1981, 1982, 1983, 1984, 1985, 1986, 1987, 1988, 1989, 1990, 1991, 1992, 1993, 1994, 1995, 1996, 1997, 1998, 1999, 2000, 2001, 2002, 2003, 2004, 2005, 2006, 2007, 2008, 2009, 2010, 2011, 2012, 2013, 2014, 2015, 2016, 2017, 2018, 2019, 2020, 2021, 2022, 2023, 2024, 2025, 2026, 2027, 2028, 2029, 2030, 2031, 2032, 2033, 2034, 2035, 2036, 2037, 2038, 2039, 2040, 2041, 2042, 2043, 2044, 2045, 2046, 2047, 2048, 2049, 2050, 2051, 2052, 2053, 2054, 2055, 2056, 2057, 2058, 2059, 2060, 2061, 2062, 2063, 2064, 2065, 2066, 2067, 2068, 2069, 2070, 2071, 2072, 2073, 2074, 2075, 2076, 2077, 2078, 2079, 2080, 2081, 2082, 2083, 2084, 2085, 2086, 2087, 2088, 2089, 2090, 2091, 2092, 2093, 2094, 2095, 2096, 2097, 2098, 2099, 2100, 2101, 2102, 2103, 2104, 2105, 2106, 2107, 2108, 2109, 2110, 2111, 2112, 2113, 2114, 2115, 2116, 2117, 2118, 2119, 2120, 2121, 2122, 2123, 2124, 2125, 2126, 2127, 2128, 2129, 2130, 2131, 2132, 2133, 2134, 2135, 2136, 2137, 2138, 2139, 2140, 2141, 2142, 2143, 2144, 2145, 2146, 2147, 2148, 2149, 2150, 2151, 2152, 2153, 2154, 2155, 2156, 2157, 2158, 2159, 2160, 2161, 2162, 2163, 2164, 2165, 2166, 2167, 2168, 2169, 2170, 2171, 2172, 2173, 2174, 2175, 2176, 2177, 2178, 2179, 2180, 2181, 2182, 2183, 2184, 2185, 2186, 2187, 2188, 2189, 2190, 2191, 2192, 2193, 2194, 2195, 2196, 2197, 2198, 2199, 2200, 2201, 2202, 2203, 2204, 2205, 2206, 2207, 2208, 2209, 2210, 2211, 2212, 2213, 2214, 2215, 2216, 2217, 2218, 2219, 2220, 2221, 2222, 2223, 2224, 2225, 2226, 2227, 2228, 2229, 2230, 2231, 2232, 2233, 2234, 2235, 2236, 2237, 2238, 2239, 2240, 2241, 2242, 2243, 2244, 2245, 2246, 2247, 2248, 2249, 2250, 2251, 2252, 2253, 2254, 2255, 2256, 2257, 2258, 2259, 2260, 2261, 2262, 2263, 2264, 2265, 2266, 2267, 2268, 2269, 2270, 2271, 2272, 2273, 2274, 2275, 2276, 2277, 2278, 2279, 2280, 2281, 2282, 2283, 2284, 2285, 2286, 2287, 2288, 2289, 2290, 2291, 2292, 2293, 2294, 2295, 2296, 2297, 2298, 2299, 2300, 2301, 2302, 2303, 2304, 2305, 2306, 2307, 2308, 2309, 2310, 2311, 2312, 2313, 2314, 2315, 2316, 2317, 2318, 2319, 2320, 2321, 2322, 2323, 2324, 2325, 2326, 2327, 2328, 2329, 2330, 2331, 2332, 2333, 2334, 2335, 2336, 2337, 2338, 2339, 2340, 2341, 2342, 2343, 2344, 2345, 2346, 2347, 2348, 2349, 2350, 2351, 2352, 2353, 2354, 2355, 2356, 2357, 2358, 2359, 2360, 2361, 2362, 2363, 2364, 2365, 2366, 2367, 2368, 2369, 2370, 2371, 2372, 2373, 2374, 2375, 2376, 2377, 2378, 2379, 2380, 2381, 2382, 2383, 2384, 2385, 2386, 2387, 2388, 2389, 2390, 2391, 2392, 2393, 2394, 2395, 2396, 2397, 2398, 2399, 2400, 2401, 2402, 2403, 2404, 2405, 2406, 2407, 2408, 2409, 2410, 2411, 2412, 2413, 2414, 2415, 2416, 2417, 2418, 2419, 2420, 2421, 2422, 2423, 2424, 2425, 2426, 2427, 2428, 2429, 2430, 2431, 2432, 2433, 2434, 2435, 2436, 2437, 2438, 2439, 2440, 2441, 2442, 2443, 2444, 2445, 2446, 2447, 2448, 2449, 2450, 2451, 2452, 2453, 2454, 2455, 2456, 2457, 2458, 2459, 2460, 2461, 2462, 2463, 2464, 2465, 2466, 2467, 2468, 2469, 2470, 2471, 2472, 2473, 2474, 2475, 2476, 2477, 2478, 2479, 2480, 2481, 2482, 2483, 2484, 2485, 2486, 2487, 2488, 2489, 2490, 2491, 2492, 2493, 2494, 2495, 2496, 2497, 2498, 2499, 2500, 2501, 2502, 2503, 2504, 2505, 2506, 2507, 2508, 2509, 2510, 2511, 2512, 2513, 2514, 2515, 2516, 2517, 2518, 2519, 2520, 2521, 2522, 2523, 2524, 2525, 2526, 2527, 2528, 2529, 2530, 2531, 2532, 2533, 2534, 2535, 2536, 2537, 2538, 2539, 2540, 2541, 2542, 2543, 2544, 2545, 2546, 2547, 2548, 2549, 2550, 2551, 2552, 2553, 2554, 2555, 2556, 2557, 2558, 2559, 2560, 2561, 2562, 2563, 2564, 2565, 2566, 2567, 2568, 2569, 2570, 2571, 2572, 2573, 2574, 2575, 2576, 2577, 2578, 2579, 2580, 2581, 2582, 2583, 2584, 2585, 2586, 2587, 2588, 2589, 2590, 2591, 2592, 2593, 2594, 2595, 2596, 2597, 2598, 2599, 2600, 2601, 2602, 2603, 2604, 2605, 2606, 2607, 2608, 2609, 2610, 2611, 2612, 2613, 2614, 2615, 2616, 2617, 2618, 2619, 2620, 2621, 2622, 2623, 2624, 2625, 2626, 2627, 2628, 2629, 2630, 2631, 2632, 2633, 2634, 2635, 2636, 2637, 2638, 2639, 2640, 2641, 2642, 2

1973-1974 (1973-1974) SPECIFICITY

UNIT STATES

f_c = COMPRESSIVE STRENGTH OF CONCRETE (2800 PSI)
 f_y = YIELD STRENGTH OF REINFORCEMENT (60,000 PSI)
 f_s = YIELD STRENGTH OF STRUCTURAL STEEL (20,000 PSI)

FOR DETAILS OF 64-0 COMPOSITE PLANS SEE DRAWING NO. 2,539

SHEET 2 OF 2

SHEET 2 OF 2
 LAYOUT OF
 CURRENT RIVER BRIDGE

CURRENT RIVER BRIDGE & APPRS.

RANDOLPH COUNTY
ROUTE 328 SEC. 1

ARKANSAS STATE HIGHWAY COMMISSION
LITTLE ROCK, ARK.
July 19, 1932

DRAWN BY: JCK DATE: 6-11-77
CHECKED BY: DW DATE: 7-5-77
DESIGNED BY: JCK DATE: Aug. 1977

SCALE: 1" = 20'-0"

ENGINEER BRIDGE NO. 5735 DRAWING NO. 21532

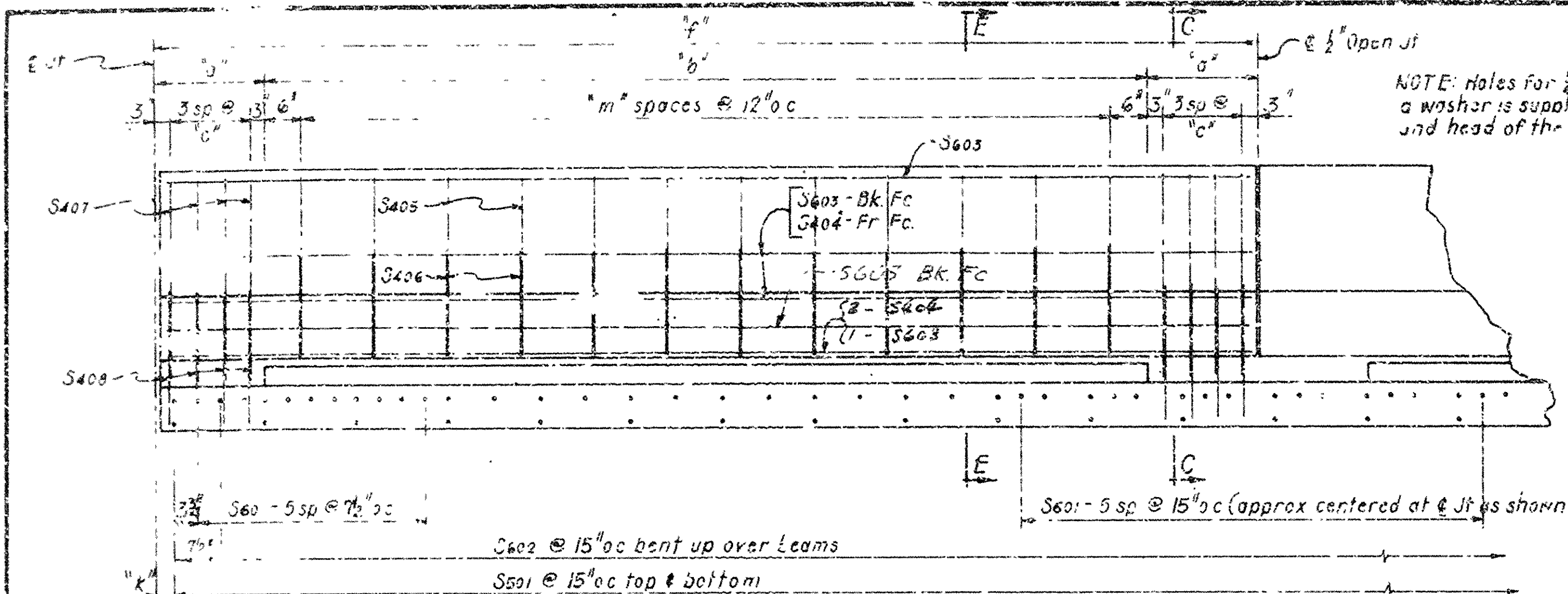
SHEET 2 OF 2
LAYOUT OF
CURRENT RIVER BRIDGE
CURRENT RIVER BRIDGE & APPRS.
RANDOLPH COUNTY
ROUTE 328 SEC. 1
ARKANSAS STATE HIGHWAY COMMISSION
LITTLE ROCK, ARK.

DRAWN BY: Jck DATE: 6-17-77
CHECKED BY: DV DATE: 7-5-77 SCALE: 1" = 20'-0"
DESIGNED BY: Jck DATE: Aug. 1977
BRIDGE NO. 5735 DRAWING NO. 2153

BRIDGE NO. 5735 DRAWING NO. 2153

SPRING REIGN

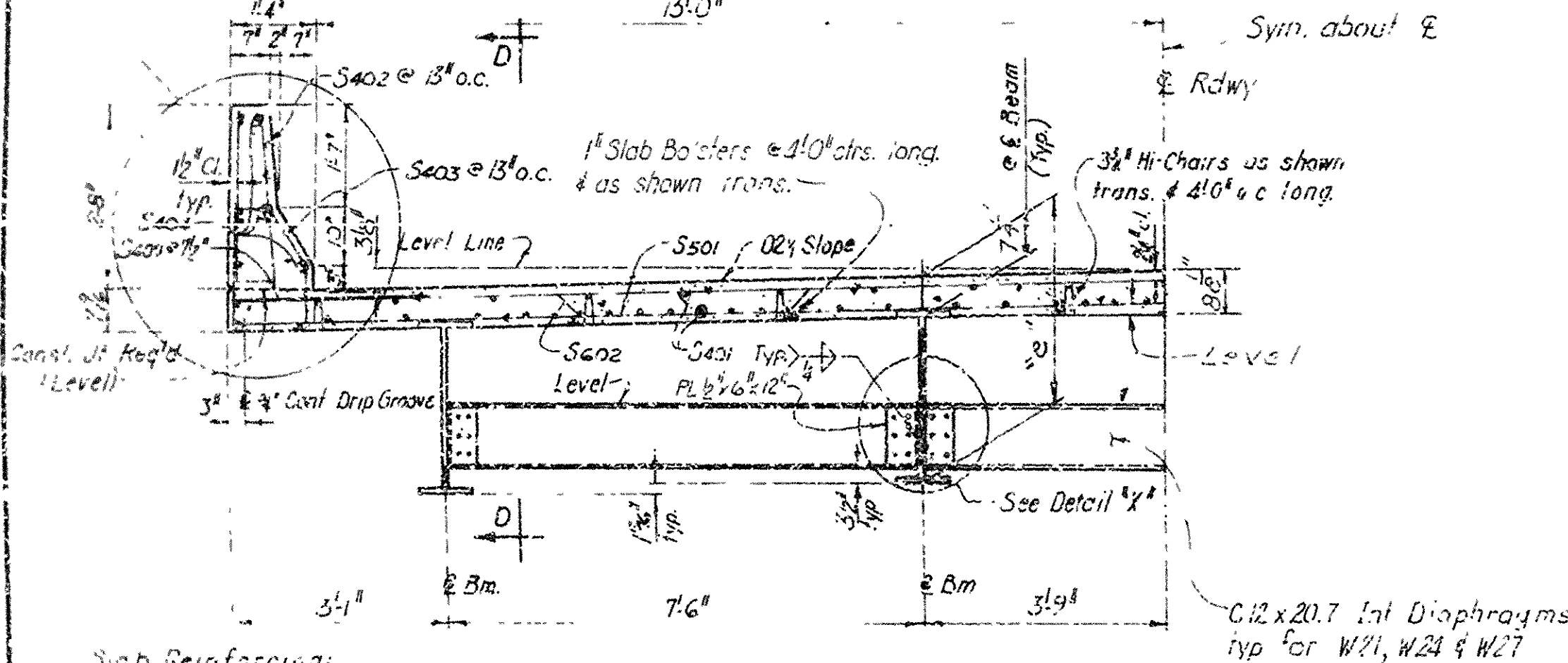
REF. ROAD NO.	STATE	FED. AID PROJ. NO.	CHRG. NO.	TOTAL SHEETS
6	ARK			
JOB NO.		10865	26	79
5735 - SPAN DTLS. -- 21538				



"k" shall not be less than 3" or greater than 7 1/2"

NOTE Boiled Linseed Oil Treatment shall be applied to the roadway surface and the face and top of concrete parapet wall

NOTE Closed Parapet Shown-See "Sect E-E" &
"Sect C-C" for Open Parapet



Sub Reinforcing:
Transverse: S201 @ 15" o.c. top & bottom HALF ROWLY SECTION A-A
S201 as shown in Long. Sect.
S202 @ 15" bent up over Bars; S203 @ 15" o.c. as shown (Closed Parapet) $b^5 = 11.7$
Longitudinal: S201 as shown
Curb Reinforcing: (For Closed Parapet)
Transverse: S202 & S203 @ 13" o.c.
Longitudinal: S203 as shown
Curb Reinforcing: (For Open Parapet - See "Long. Sect. At Curb,"
"Section C-C" & "Section E-E")

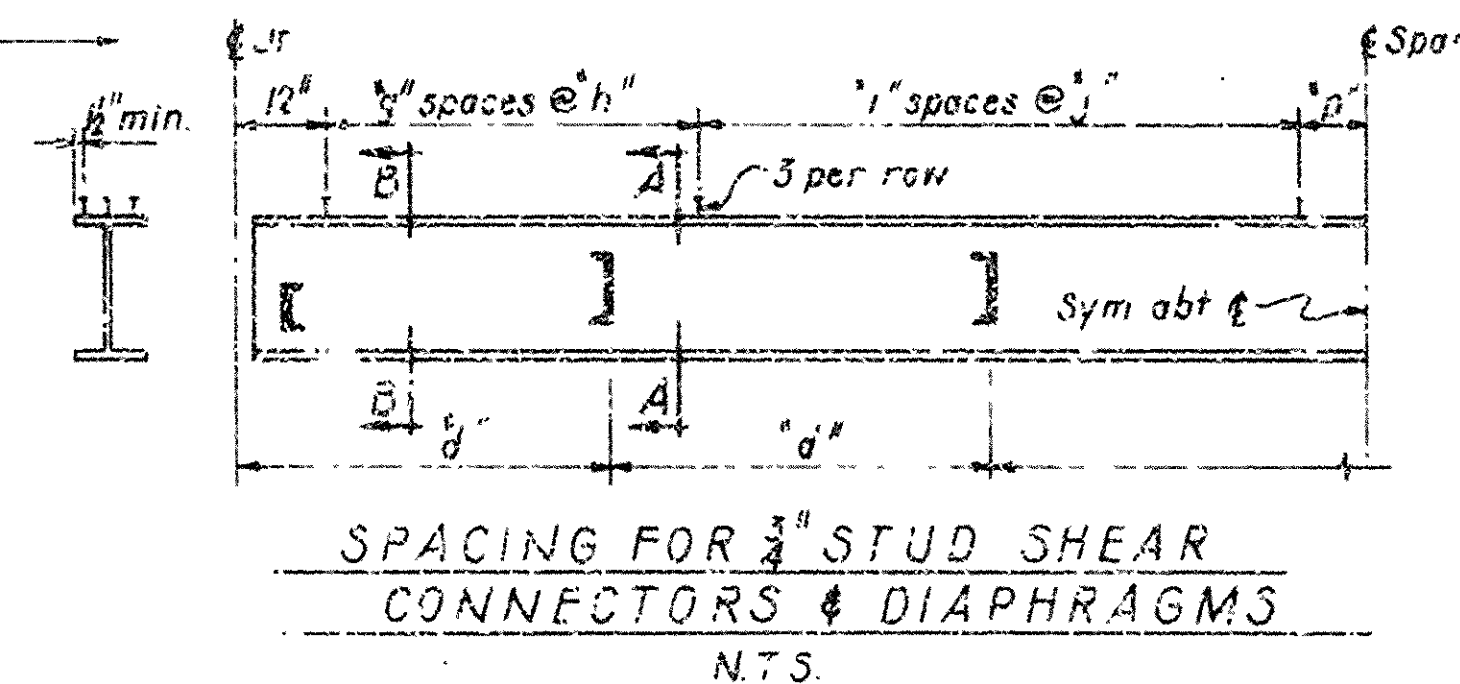
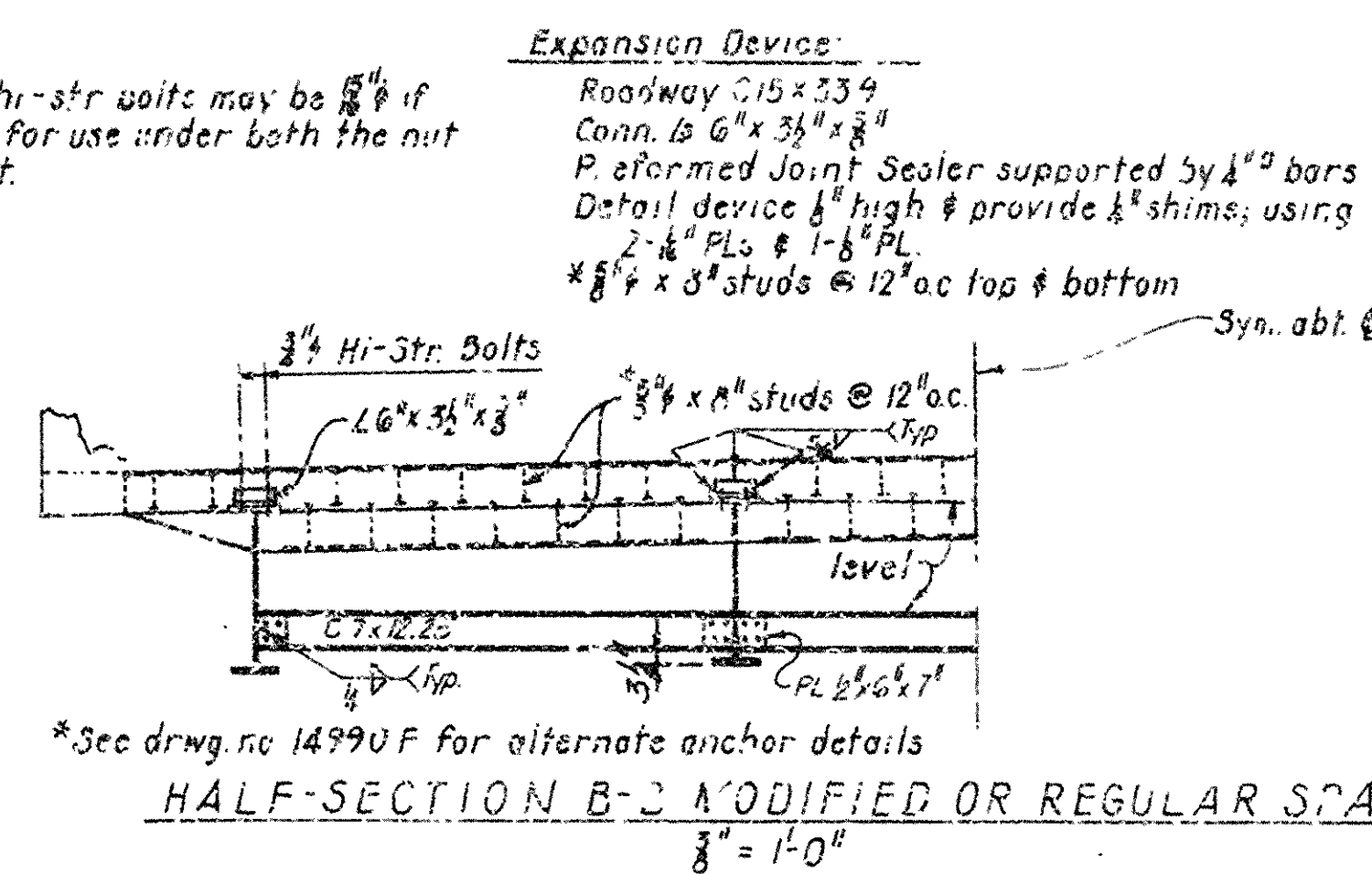
REINFORCING STEEL PER SPAN

No.	Size	Length		Span Length	
		Closed Perimeter Rail	Open Perimeter Rail	Pin Dia	64
S601	6	—	5' 7"	Str	60
S602	6	29' 0"	29' 0"	Str	51
S603	6	—	2' 6"	Str	40
S604	5	28' 3"	28' 4"	Str	104
S401	4	5' 6"	5' 8"	Str	—
S402	4	3' 7"	3' 7"	Str	126
S403	4	5' 10 1/2"	3' 12"	Str	—
S404	4	5' 6"	—	2"	—
S405	4	3' 3 1/2"	—	2"	—
S406	4	—	3' 4"	Str	32
S407	4	—	2' 6"	Str	96
S408	4	—	2"	Str	96
S409	4	—	2"	Str	66
S410	4	—	2"	Str	68

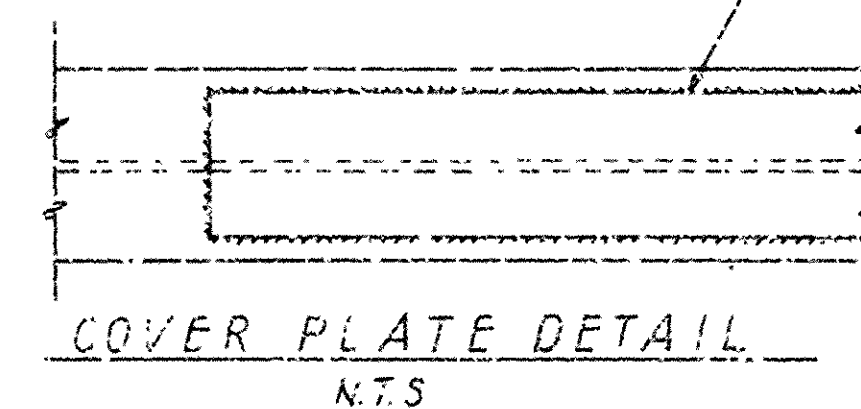
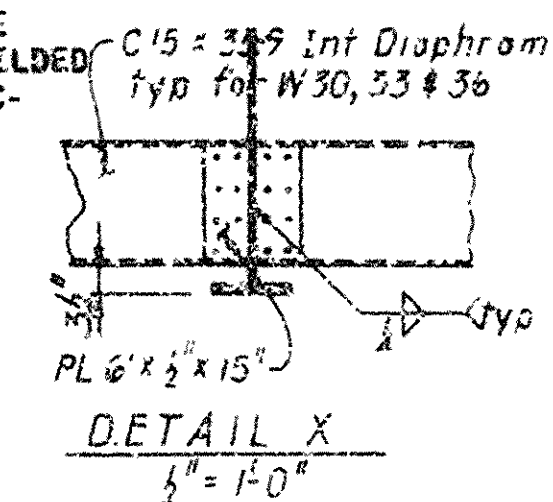
Bending Diagrams

Dimens at 2 out to out of bars

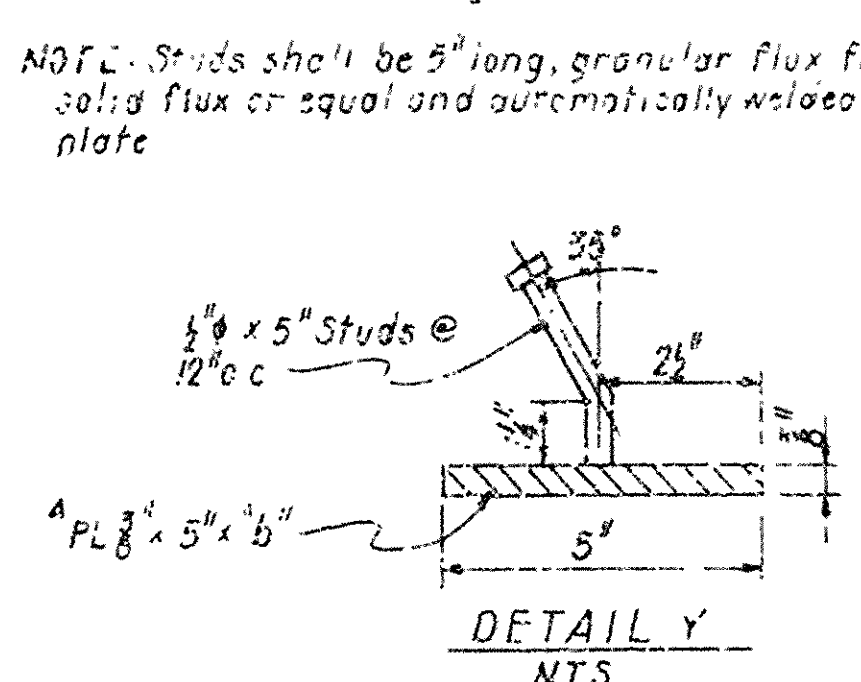
* Use For Span Lengths thru 40'	0 1/2" Overtolerance; No Undertolerance.
** " " " 41' thru 76'	
*** " " " 77' thru 90'	



NOTE: 7/8" STUDS C3X6 CHANNELS MAY BE USED IN PLACE OF THE 3/4" STUDS THAT ARE SHOWN, AT THE RATIO OF 0.735 - 7/8" STUD ON 2.0 INCHES OF C3X6 CHANNEL IN PLACE OF ONE 3/4" STUD. THE STUD CONNECTIONS SHALL BE 4" LONG AND MAY BE GRANULAR FLUX FILLED, SOLID FLOWED, OR EQUAL, AND AUTOMATICALLY END WELDED TO THE DEAM PLATES IN ACCORDANCE WITH RECOMMENDATIONS OF THE MANUFACTURER. 3/4" STUDS WILL BE USED AS BASIS FOR MEASUREMENT OF STRUCTURAL STEEL IN SHEAR CONNECTIONS.



Note: The surfaces of the 3" Plates which will not be in contact with Concrete shall receive two coats of paint in the Shop. These coats shall be those specified as First Shop Coat and Second Field Coat in S.P. 907-10.

[illegible]

The image contains two hand-drawn structural diagrams. The left diagram is a side elevation of a roof truss section. It shows a vertical wall on the left and a sloped roof structure. Key components labeled include:

- S405**: A vertical member at the top left.
- S406**: A diagonal member connecting the top left to the center.
- S407**: A diagonal member connecting the top center to the right.
- S408**: A vertical member on the right side.
- S404**: A horizontal member at the bottom.

 Dimensions are indicated: a total height of 2'-6" on the left, a top width of 7'-0" (split into 2'-0" and 5'-0"), a vertical distance of 1'-7" between the top and a lower horizontal line, and a bottom width of 10" (split into 4" and 6").

The right diagram is a detail view of a roof joint. It shows a cross-section of a roof with a 3" V-Groove at the bottom. Key components labeled include:

- S405**: A vertical member at the top.
- S407**: A diagonal member.
- S408**: A vertical member.
- S404**: A horizontal member.
- S401**: A horizontal member at the bottom, connected to the 3" V-Groove.

 Dimensions are indicated: a total height of 2'-9 3/4" on the left, a top width of 7'-0" (split into 2'-0" and 5'-0"), a vertical distance of 1'-7" between the top and a lower horizontal line, and a bottom width of 10" (split into 4" and 6").

The diagram illustrates the cross-section of a parapet wall with reinforcement details for two sections: Section E-E and Section C-C.

Section E-E: The top reinforcement is labeled f'' . The bottom reinforcement is labeled $f'' = 1'0''$.

Section C-C: The top reinforcement is labeled f'' . The bottom reinforcement is labeled $f'' = 1'0''$.

Reinforcement Details:

- Open Joint:** A horizontal line indicates an open joint, with a note: "1" Open Joint - Stop as shown above top of slab".
- Parapet Wall:** The wall is labeled "Parapet" on the right side.
- Slab:** The bottom of the wall is labeled "Top of Slab".
- Reinforcement:** The reinforcement is shown as a series of horizontal lines with dots representing bars. The top reinforcement is labeled f'' and the bottom reinforcement is labeled $f'' = 1'0''$.

SECTION D-D
NTS

GENERAL NOTES

ALL STRUCTURAL STEEL SHALL BE PAID FOR AT THE PRICE BID PER POUND FOR "STRUCTURAL STEEL IN BEAM SPANS (A 572, GRADE 50)".

THIS DRAWING TO BE USED WITH DRAWING NO. 14099F.
LOADING: HS20
DESIGN SPECIFICATIONS: AASHTO 1973 WITH 1971 thru 1977 INTERIMS.

DEAD LOAD:	<u>INTERIOR BEAM</u>	<u>EXTERIOR BEAM</u>
a. TO WF BEAM	670#/ft + 1.30 (FT/FT OF WF)	633#/ft + 1.30 (FT/FT OF WF)
b. TO COMPOSITE BEAM*	290#/ft (OPEN BARRIER)	290#/ft (OPEN BARRIER)
	306#/ft (CLOSED BARRIER)	306#/ft (CLOSED BARRIER)
LIVE LOAD:		
TO EACH COMPOSITE BEAM	1.364 WHEELS + IMPACT	1.277 WHEELS + IMPACT
STRUCTURAL STEEL (A572)	fy = 36,000 PSI	
CLASS (A)E CONCRETE (N=1)	fc = 3,600 PSI	
STRUCTURAL STEEL (A572, GR. 50)	fy = 50,000 PSI	
REINFORCING STEEL (A615, GRADE 60)	fy = 60,000 PSI	
BEAM AND COVER PLATES SHALL BE (A572, GRADE 50)		
ALL OTHER STRUCTURAL STEEL SHALL BE A36.		
*INCLUDES 63#/FT FUTURE SURFACE.		

ALL W-BEAMS AND COVER PLATES ARE CONSIDERED MAJ. LOAD CARRYING MEMBERS AND SHALL MEET THE LONGITUDINAL CHARPY V-NOTCH TEST SPECIFIED IN SP807-4.

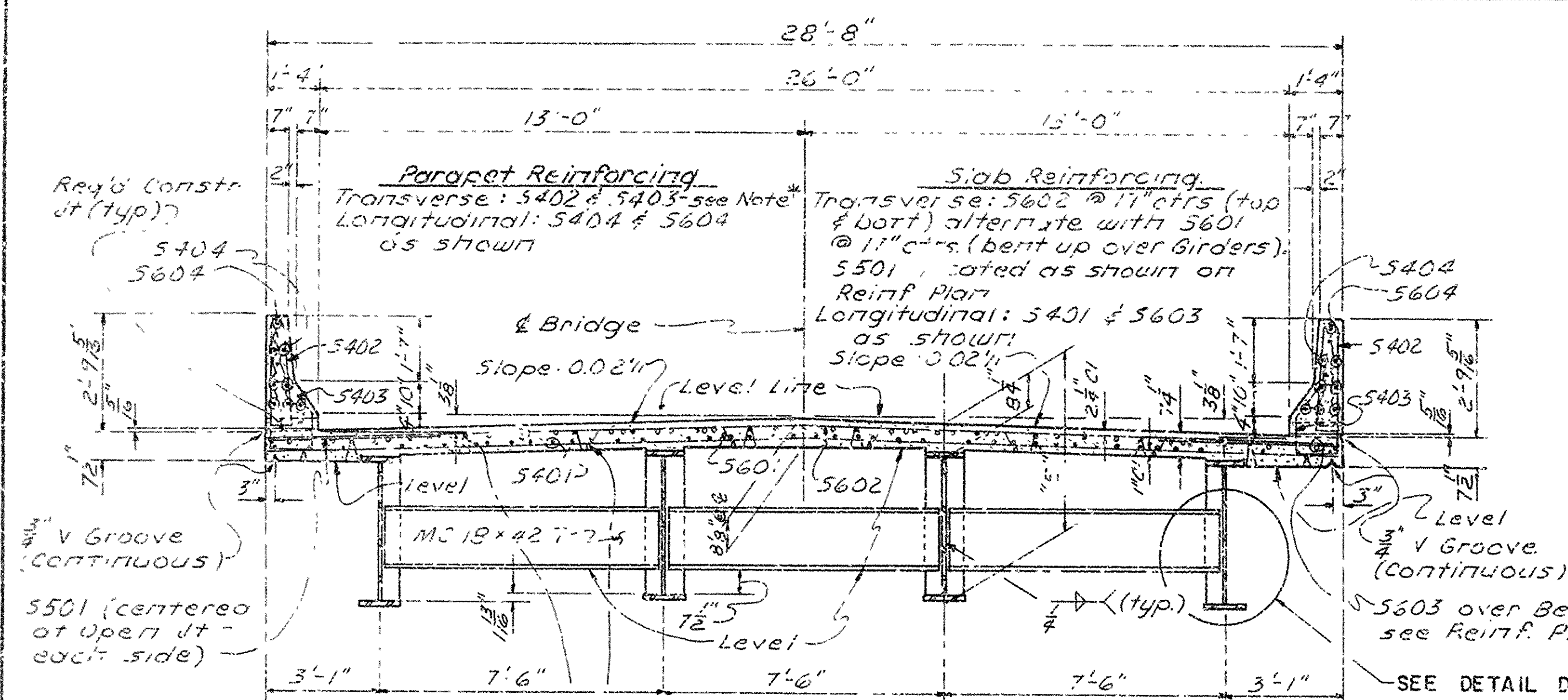
METHOD OF DESIGN: LOAD FACTOR

Note: Drawing revised for Job
10 10865 by J.R.S.; Date 12-7-77

DETAILS OF STANDARD
35'-90' COMPOSITE W-BEAM SPANS
CONC. PARAPET RAIL (OPEN OR CLOSED)
26" CL RDWY. 0.02% PEAKED CROWN
ROUTE 328 SEC. 1
ARKANSAS STATE HIGHWAY COMMISSION

DRAWN BY K.H.S. DATE 25 Apr 77
 CHECKED BY BTJ DATE 11-5-77 SCALE As Shown
 REVISION BY D.A. DATE 3-24-77
 BRIDGE NO. 5735 DRAWING NO. 21538

DATE REVISED	DATE FILMED	DATE REVISED	DATE FILMED	FED. ROAD NO.	STATE	FED. AID PROJ. NO.	SHEET NO.	TOTAL SHEETS
				6	ARK.			
				JOB NO.		10865	29	79
						5735	PL GIRDER DTL'S	21541



Reinforcing (typ.)

Parapet Reinforcing
Transverse: S402 & S403 - see Note
Longitudinal: S404 & S604 as shown

Slab Reinforcing
Transverse: S502 @ 12" ctrs (top & bottom) alternate with S601 @ 12" ctrs (bent up over girders). S501 is located as shown on Reinf. Plan as shown.

Longitudinal: S401 & S603 as shown.

Slope: 0.021/1

Level Line

Level S401

Level S602

Level S603

Level S403

Level S501

Level S502

Level S503

Level S504

Level S604

Level S605

Level S606

Level S607

Level S608

Level S609

Level S610

Level S611

Level S612

Level S613

Level S614

Level S615

Level S616

Level S617

Level S618

Level S619

Level S620

Level S621

Level S622

Level S623

Level S624

Level S625

Level S626

Level S627

Level S628

Level S629

Level S630

Level S631

Level S632

Level S633

Level S634

Level S635

Level S636

Level S637

Level S638

Level S639

Level S640

Level S641

Level S642

Level S643

Level S644

Level S645

Level S646

Level S647

Level S648

Level S649

Level S650

Level S651

Level S652

Level S653

Level S654

Level S655

Level S656

Level S657

Level S658

Level S659

Level S660

Level S661

Level S662

Level S663

Level S664

Level S665

Level S666

Level S667

Level S668

Level S669

Level S670

Level S671

Level S672

Level S673

Level S674

Level S675

Level S676

Level S677

Level S678

Level S679

Level S680

Level S681

Level S682

Level S683

Level S684

Level S685

Level S686

Level S687

Level S688

Level S689

Level S690

Level S691

Level S692

Level S693

Level S694

Level S695

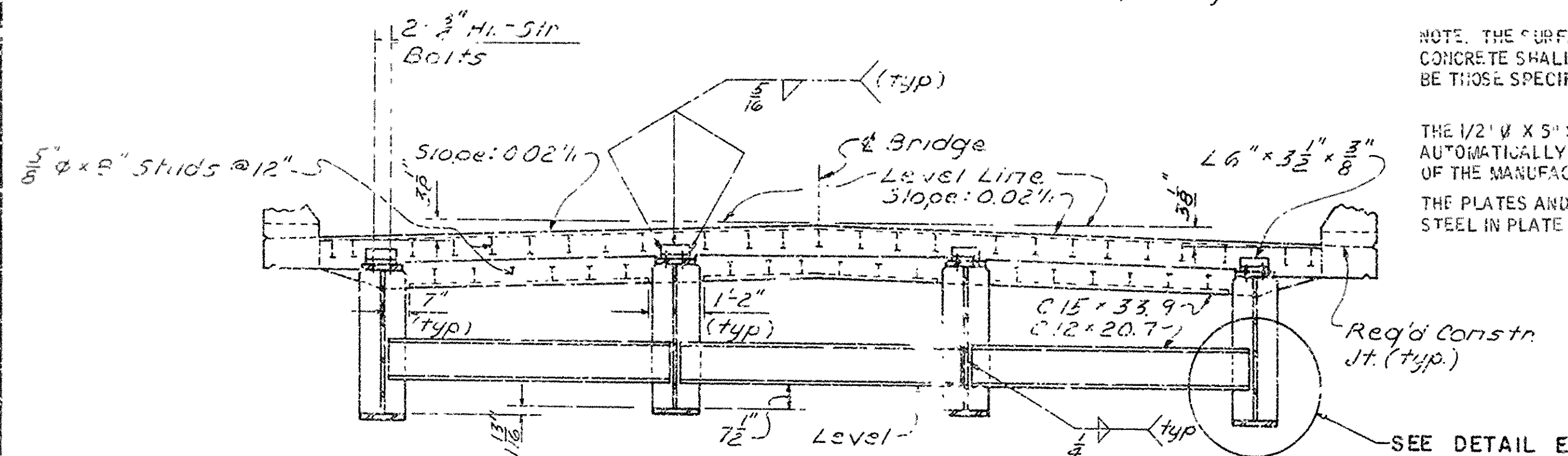
Level S696

Level S697

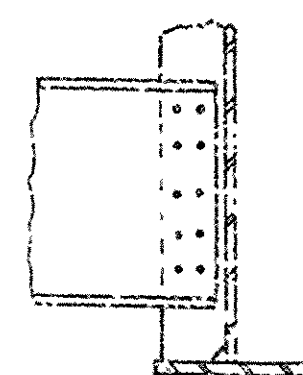
Level S698

Level S699

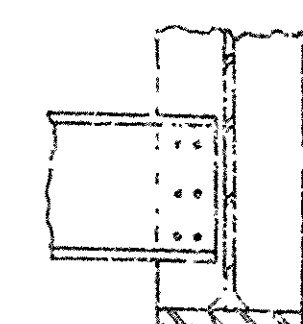
Level S700



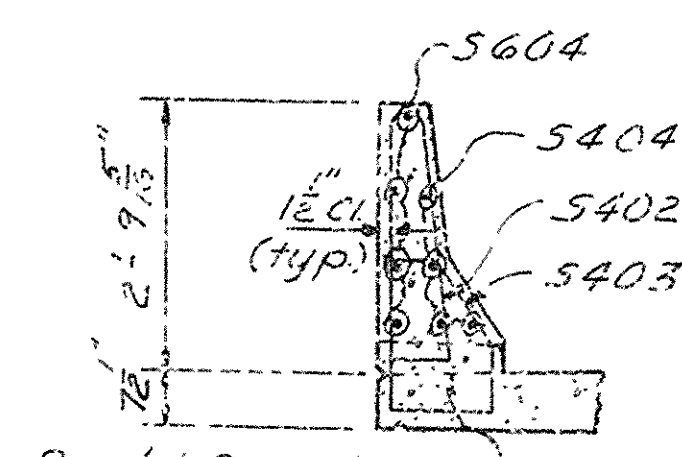
Expansion Device: Roadway C15 x 33.9' 26'-0" Conn L's 6" x 3 1/2" x 3/8" x 0'-8" Prefabricated Joint Sealer supported by 2" x 4" x 8" studs @ 12" ctrs. Detail Device & height & provide & shim using 2" x 4" x 8" PL's 3/8" x 8" studs @ 12" ctrs (top & bottom).



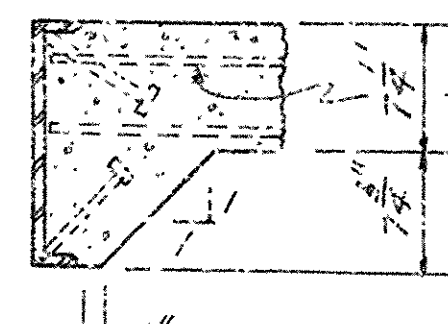
DETAIL D
Scale: $\frac{3}{8}'' = 1'-0''$



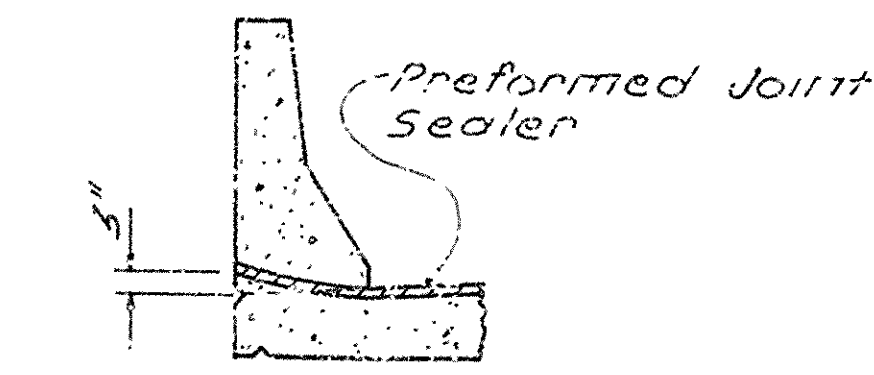
DETAIL E
Scale: $\frac{3}{8}'' = 1'-0''$



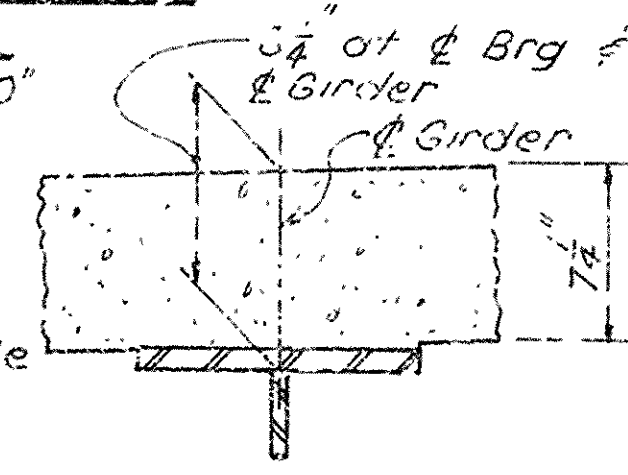
SECTION F-F
Scale: $\frac{3}{8}'' = 1'-0''$



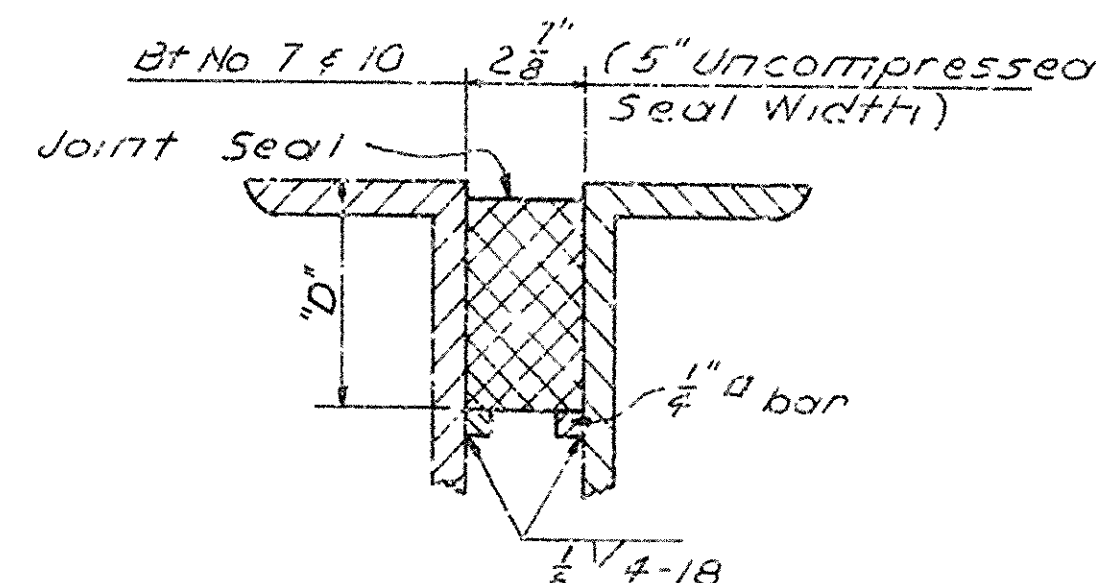
ANCHOR DETAIL
Scale: $\frac{3}{8}'' = 1'-0''$



SEAL PLACEMENT IN PARAPET
Scale: $\frac{3}{8}'' = 1'-0''$

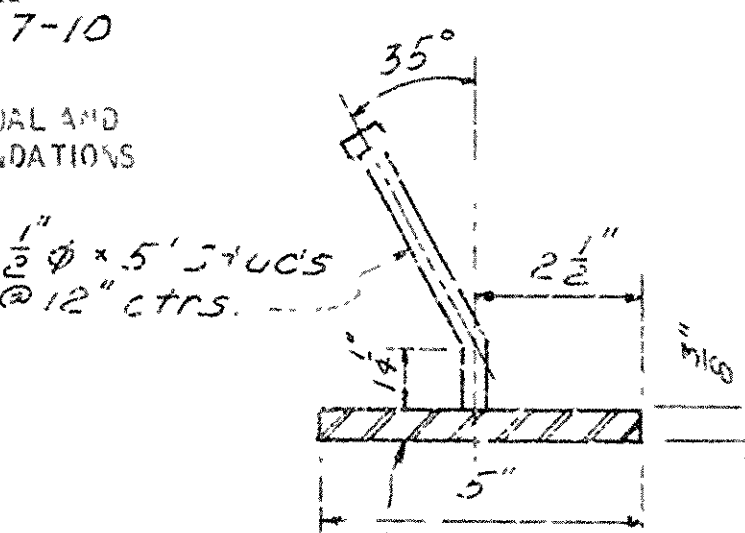
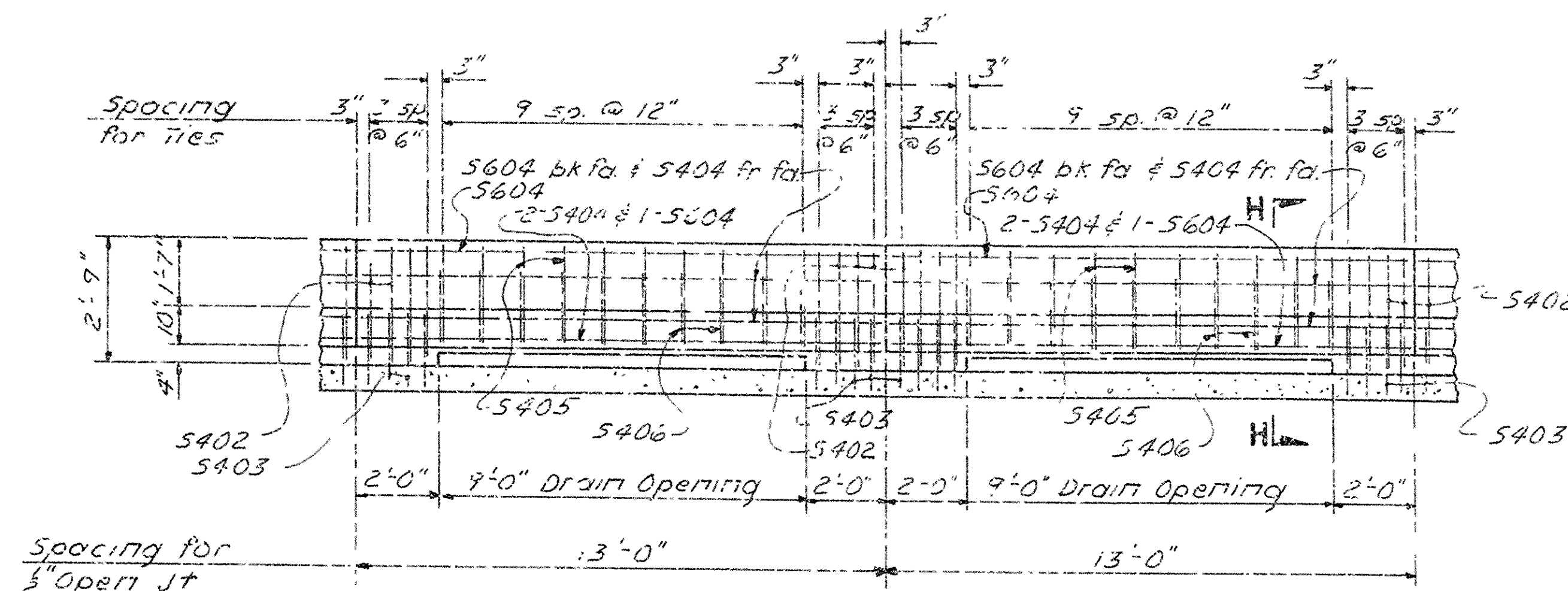


GIRDER SLAB DETAIL
Scale: $\frac{3}{8}'' = 1'-0''$

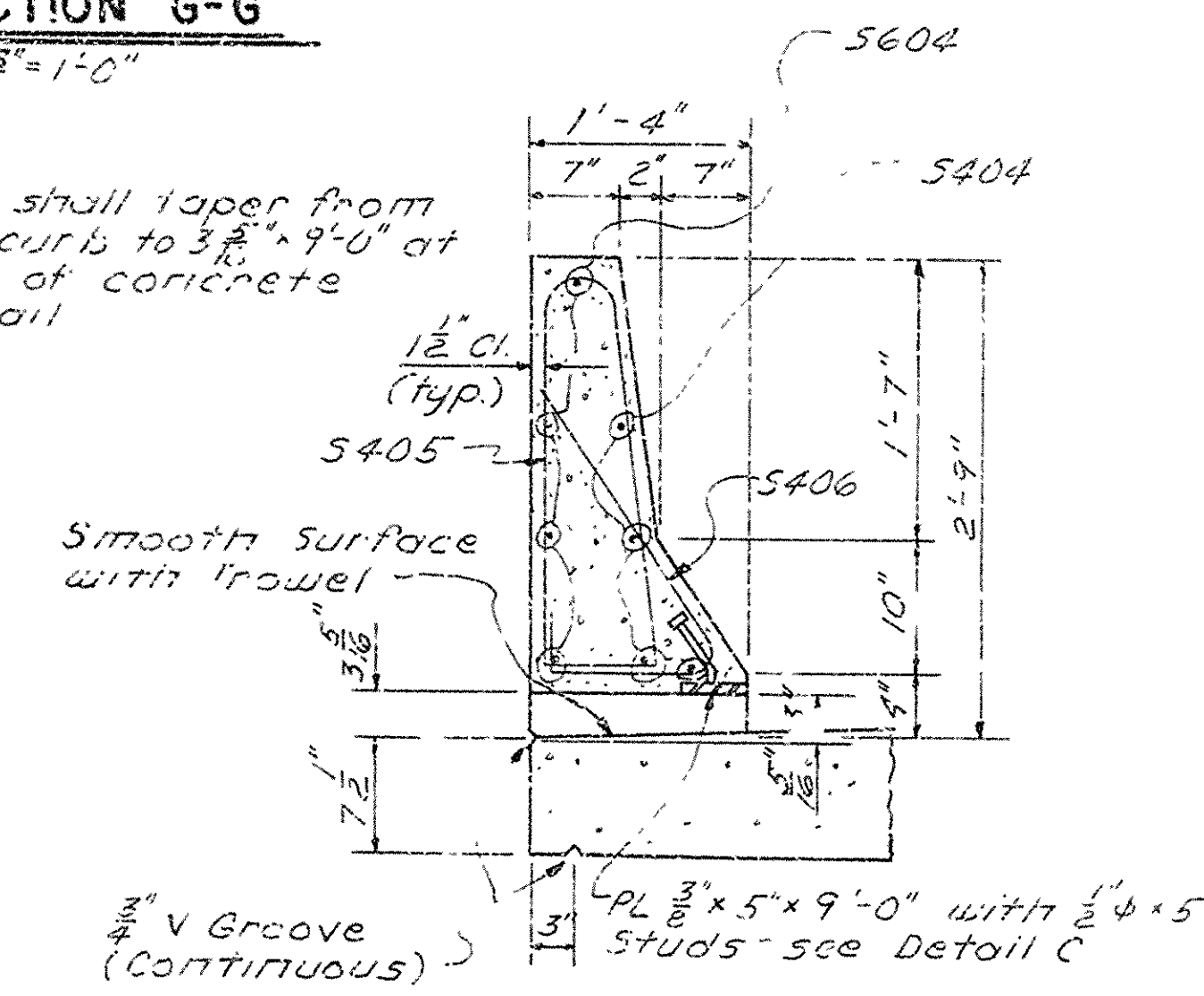


JOINT SEAL SUPPORT
No Scale

NOTE: THE DIMENSION D SHALL CONFORM TO THE RECOMMENDATIONS OF THE SEAL MANUFACTURER AS APPROVED BY THE BRIDGE ENGINEER. THE DEPTH OF THE SEAL SHALL BE APPROXIMATELY EQUAL TO THE UNCOMPRESSED WIDTH OF THE SEAL.

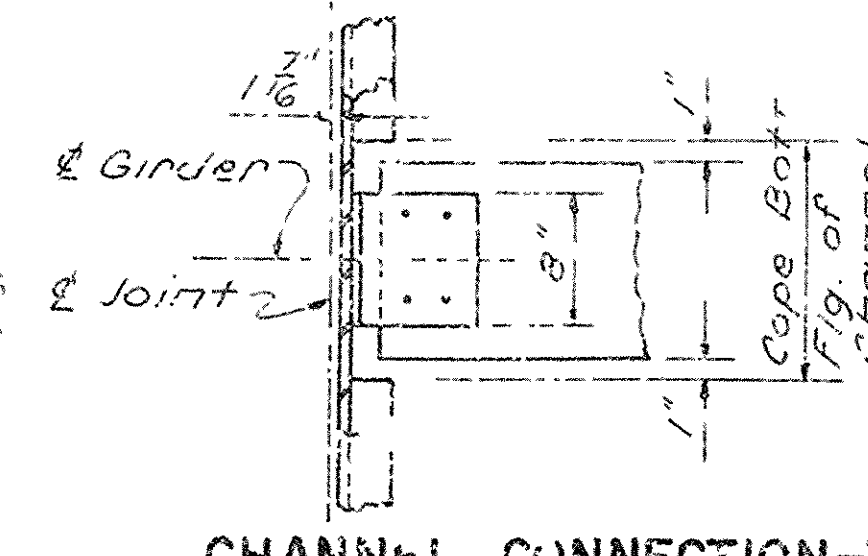


DETAIL C
No Scale



SECTION H-H
Scale: $\frac{3}{8}'' = 1'-0''$

Note: For location of Sections A-A, B-B, F-F & G-G see dwg. no. 21540



CHANNEL CONNECTION-TYP
Scale: $\frac{3}{8}'' = 1'-0''$

SHEET 2 OF 4
DETAILS OF 338'-0" CONTINUOUS
PLATE GIRDER UNIT
CURRENT RIVER
CURRENT RIVER BRIDGE & APPRS.
RANDOLPH COUNTY
ROUTE 328 SEC. 1
ARKANSAS STATE HIGHWAY COMMISSION
LITTLE ROCK, ARK.

DRAWN BY: JPS DATE: 9-27-77
CHECKED BY: ALW DATE: 1-16-77 SCALE: as noted
DESIGNED BY: D.V. DATE: July 1977
BRIDGE NO. 5735 DRAWING NO. 21541