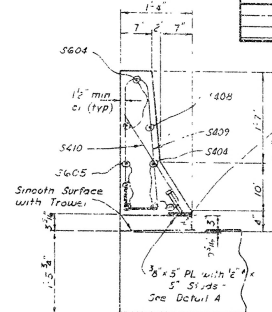
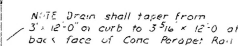


SECTION A-A



SECTION B-B

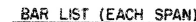


NO. SCALE

The surfaces of the 3/8 Plates which will not be in contact with concrete shall receive two coats of paint in the Shop. These coats shall be those specified on first coat and second field coat S.P. 804-10.

Structural Steel shall meet the requirements of section 807, except as noted.

Studs shall be 5" long, granular flux filled, solid filled or equal and automatically welded to Plate. Studs and plate to be measured and paid for as Class S/A Concrete.



| MARK | NO. REOD | | LENGTH | PIA DIA |
|------|----------|-----|--------|---------|
| | END | INT | | |
| S401 | 13 | 13 | 29'-8" | 5 1/8" |
| S403 | 8 | 16 | 14'-8" | 5 1/8" |
| S404 | 6 | - | 15'-2" | 5 1/8" |
| S405 | 28 | 52 | 7'-1" | 2" |
| S406 | 42 | 42 | 28'-4" | 5 1/8" |
| S408 | 2 | - | 14'-2" | 5 1/8" |
| S409 | 48 | 48 | 6'-2" | 2" |
| S410 | 48 | 48 | 3'-2" | 2" |
| S411 | 10 | - | 11' | 5 1/8" |
| S401 | 20 | 20 | 29'-8" | 5 1/8" |
| S402 | 2 | 32 | 6'-7" | 3 3/8" |
| S401 | 4 | - | 14'-2" | 5 1/8" |
| S403 | 8 | - | 14'-8" | 5 1/8" |
| S404 | 4 | - | 14'-2" | 5 1/8" |
| S405 | 6 | - | 15'-2" | 5 1/8" |
| S401 | 52 | 58 | 29'-8" | 5 1/8" |
| S402 | 6 | - | 15'-2" | 5 1/8" |

BENDING DIAGRAMS

Dimensions are put to out to out at Bars

GENERAL NOTES:

ALL EXPOSED CORNERS TO BE CHAMFERED 3/4" UNLESS OTHERWISE NOTED

BAR SUPPORTS FOR REINFORCING BARS WILL NOT BE PAID FOR DIRECTLY, BUT WILL BE CONSIDERED SUBSIDIARY TO THE ITEM "REINFORCING STEEL"

ROOFING FELT, BITUMINOUS FELT, PREFORMED JOINT, AND SYNTHETIC POLYMER SHALL BE MEASURED AND PAID FOR AS CLASS 5, (4) CONCRETE

SPECIFICATIONS: ARKANSAS STATE HIGHWAY COMMISSION STANDARD SPECIFICATIONS FOR HIGHWAY CONSTRUCTION, EDITION OF 1973, AND APPLICABLE SPECIAL PROVISIONS

DESIGN SPECIFICATIONS: AASHTO STANDARD SPECIFICATIONS FOR HIGHWAY BRIDGES, 1973 WITH 1974 THRU 1977 INTERIM SPECIFICATIONS

LIVE LOAD: H20

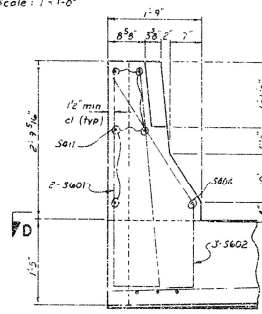
METHOD OF DESIGN: LOAD FACTOR

LOAD DISTRIBUTION TO SLAB: DEAD LOAD: 260 LBS/FT²

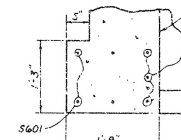
LIVE LOAD: 0.174 WHEELS/FT. OF WIDTH PLUS 30K IMPACT

CONCRETE: ALL CONCRETE SHALL BE CLASS 5 (A6) WITH A MINIMUM 20 DAY COMPRESSIVE STRENGTH $f_c = 3500$ PSI

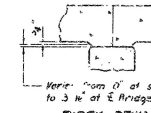
REINFORCING STEEL: REINFORCING STEEL SHALL CONFORM TO ASTM A615 OR A617, GRADE 60, YIELD STRENGTH $= 40,000$ PSI



VIEW C-C



SECTION D-D



RISER DETAIL

| Quantity | End Span | Int Span |
|-------------------|-----------------------|-----------------------|
| Concrete | 50.61 yd ³ | 50.23 yd ³ |
| Reinforcing Steel | 1880 lbs. | 7812 lbs |
| Structural Steel | 323 LBS. | 323 LBS |

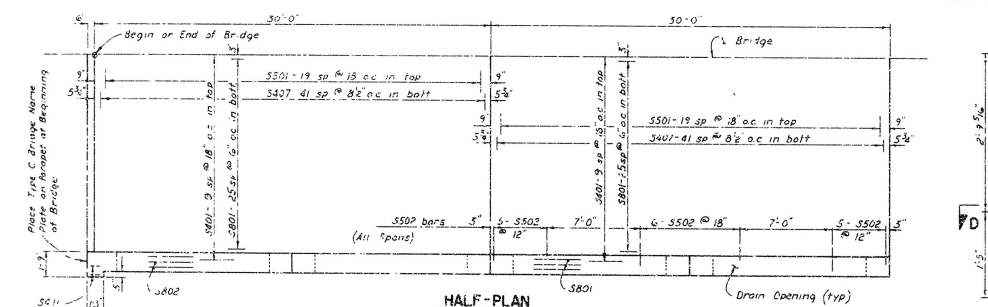
* Not Paid for Directly, Subsidiary to the Item "Class 5 Concrete"

DETAILS OF STANDARD
30'-0" R.C. SLAB SPANS
CONC. PARAPET RAIL - 26'-0" CL. RDWY.
ROUTE 328 SEC. 1
ARKANSAS STATE HIGHWAY COMMISSION

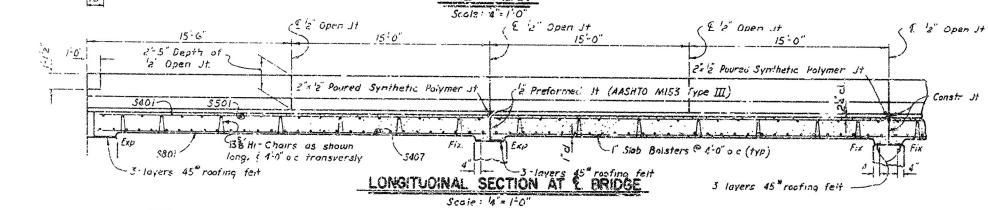
LITTLE ROCK, ARK

DESIGNED BY BJM DATE 7-6-77
CHECKED BY YAC DATE 7-7-77 SCALE As Noted
DESIGNED BY STO DATE 7-7-77

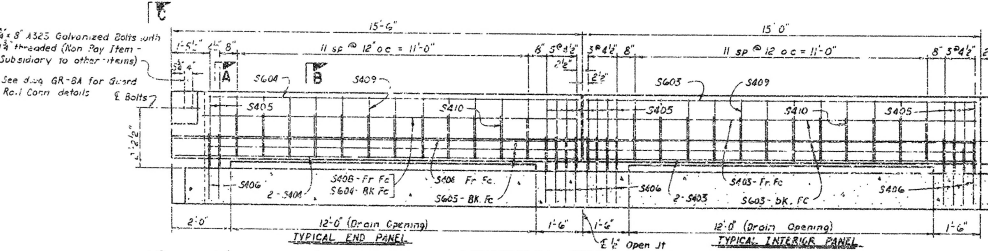
BRIDGE NO. 5734 DRAWING NO. 21530



HALF-PLAN



LONGITUDINAL SECTION AT BRIDGE



LONGITUDINAL SECTION AT CURB

Scale : $\frac{1}{2}'' = 1'-0''$

BRIDGE ENGINEER