

CURVE DATA (℄ SURVEY)

P.I. STA. 242+82.1
 P.C. STA. 241+73.6
 P.T. STA. 243+90.3
 $D = 3^\circ$
 $T = 108.5'$
 $L = 216.7'$
 $\Delta = 6^\circ 30' \text{ LT.}$

CURVE DATA (℄ CONSTR.)

P.I. STA. 243+85.72
 P.C. STA. 242+98.54
 P.T. STA. 244+72.77
 $D = 3^\circ$
 $T = 87.18'$
 $L = 174.23'$
 $\Delta = 5^\circ 13' 37' \text{ LT.}$

DATE REVISED	DATE FILMED	DATE REVISED	DATE FILMED	FED. ROAD NO.	STATE	FED. AID PROJ. NO.	SHEET NO.	TOTAL SHEETS
				6	ARK.			
				JOB NO.	100077	13		
				6087	LAYOUT	26849		

NOTE:

FOR R/W DATA - SEE ROADWAY PLANS

FOR UTILITIES - SEE ROADWAY PLANS

4'-0" Sidewalk
 50'-0" Face to Face
 of Curb at Beg.
 of Bridge

℄ Construction

Test Hole No. 1

P.C. Sta. 242+98.54
 ℄ Constr.

Test Hole No. 2

Test Hole No. 3

COLLIER FORD SALES

Approx. 0.89 mi. to
 Jct. U.S. Hwy. 49
 $N 82^\circ 37' E$

P.T. Sta. 244+72.77
℄ Constr.SGNS
LGT

SGN

Service Line

PLAN**CURVE DATA (℄ CONSTR. & ℄ SURVEY)**

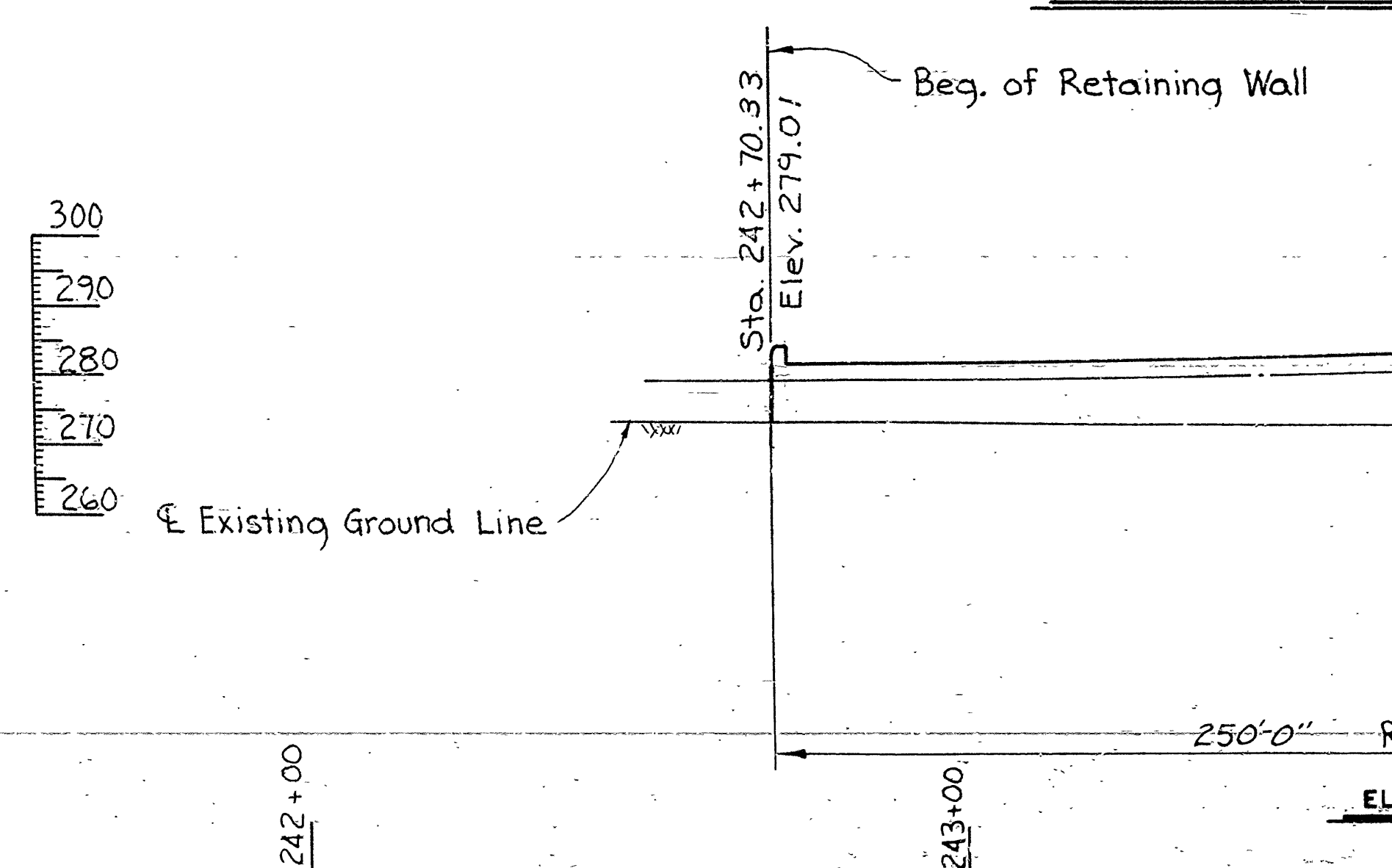
P.I. STA. 246+19.7
 P.C. STA. 245+09.0
 P.T. STA. 247+30.1
 $D = 3^\circ$
 $T = 110.7'$
 $L = 221.1'$
 $\Delta = 6^\circ 38' \text{ RT.}$

VERTICAL CURVE DATA

℄ CONSTRUCTION

VERTICAL CURVE DATA

℄ CONSTRUCTION

**ELEVATION SOUTH WALL**

Beg. of Br. Sta. 245+28.67
 Elev. 290.04

Total Length of Bridge = 545'-7 3/4"

65'-0" Composite
 W-Beam Span

1" Jt.

Fix. 15'-5" Clear
 Exp. Fix.

Sta. 245+95
Elev. 295.37

Beg. of Br. Sta. 245+28.67
 Elev. 290.04

Total Length of Bridge = 545'-7 3/4"

65'-0" Composite
 W-Beam Span

1" Jt.

Fix. 15'-5" Clear
 Exp. Fix.

Sta. 245+95
Elev. 295.37**ELEVATION**

SHEET 1 OF 3
 LAYOUT OF RR OVERPASS
 HWY. 412 RAILROAD OVERPASS
 (PARAGOULD)
 GREENE COUNTY
 ROUTE 412 SEC. 9
 ARKANSAS STATE HIGHWAY COMMISSION

LITTLE ROCK, ARK.

DRAWN BY: TEB DATE: 10-5-83

CHECKED BY: ARW DATE: 10-14-83

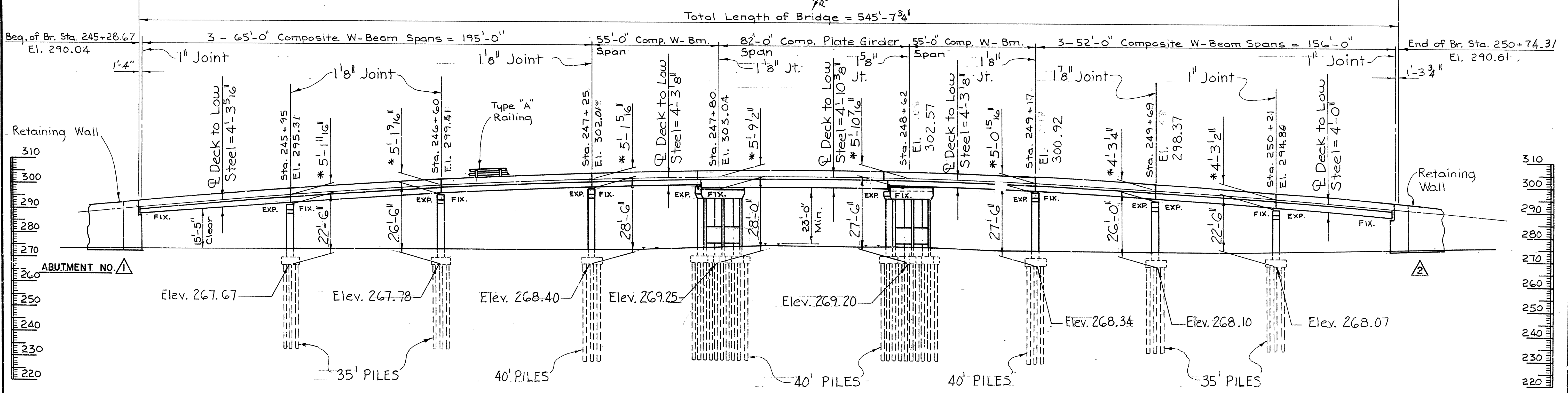
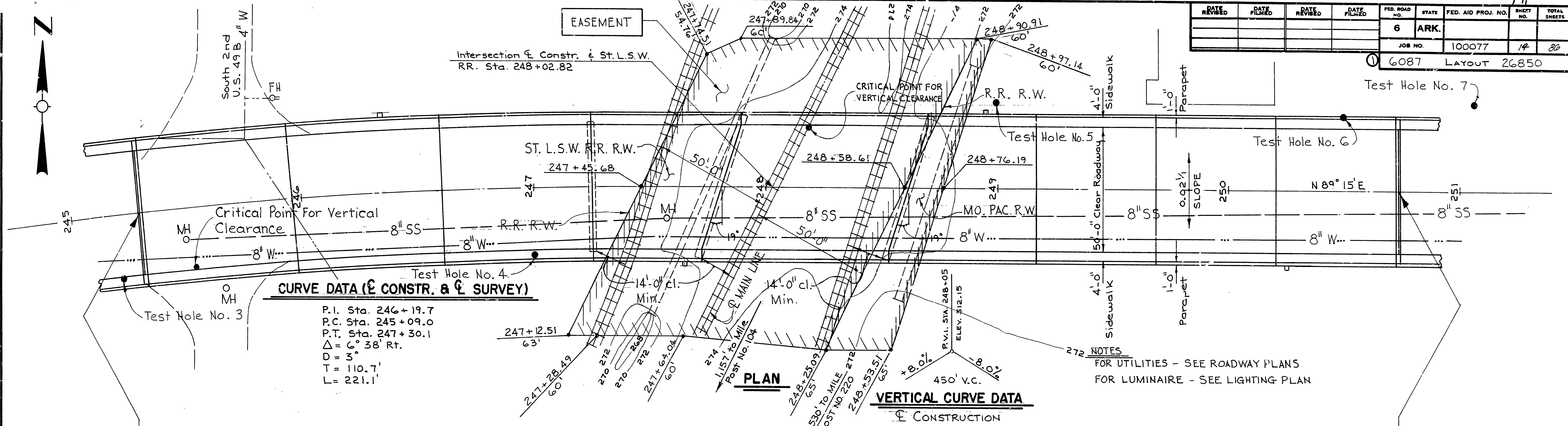
DESIGNED BY: DATE:

SCALE: 1" = 20'-0"

BRIDGE NO. 6087

DRAWING NO. 26849

DATE REVISED	DATE FILMED	DATE REVISED	DATE FILMED	FED. ROAD NO.	STATE	FED. AID PROJ. NO.	SHEET NO.	TOTAL SHEETS
				6	ARK.			
				JOB NO.	100077	14	30	
				6087	LAYOUT	26850		



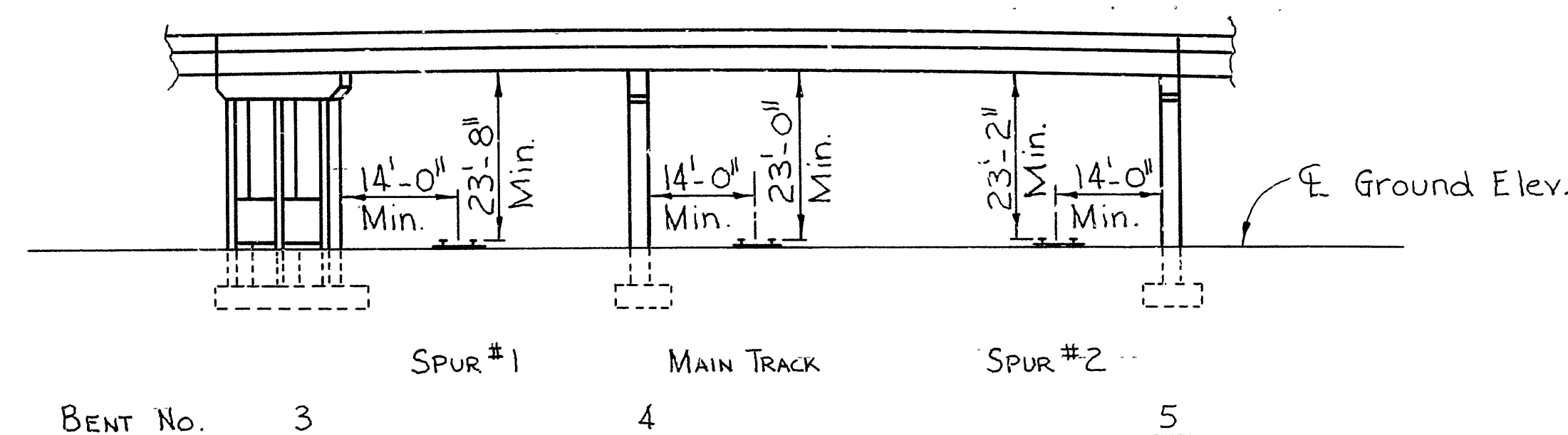
BENT NUMBER

ELEVATION

SHEET 2 OF 3
LAYOUT OF RR OVERPASS
HWY. 412 RAILROAD OVERPASS
(PARAGOULD)
GREENE COUNTY
ROUTE 412 SEC. 9
ARKANSAS STATE HIGHWAY COMMISSION
LITTLE ROCK, ARK.

DRAWN BY: TEB DATE: 6-9-81
CHECKED BY: ARW DATE: 10-14-83 SCALE: 1" = 20'-0"
DESIGNED BY: SJE DATE:
BRIDGE NO. 6087 DRAWING NO. 26850

DATE REVISED	DATE FILMED	DATE REVISED	DATE FILMED	FED. ROAD NO.	STATE	FED. AID PROJ. NO.	SHEET NO.	TOTAL SHEET
				6	ARK.			
				JOB NO.	100077	15	80	
				6087	LAYOUT	26851		



GENERAL NOTES:

UNIT STRESSES:
 f_c = COMPRESSIVE STRENGTH OF CLASS S OR S(AE) CONCRETE = 3500 PSI
 f_y = YIELD STRENGTH OF REINFORCING STEEL = 60,000 PSI
 f_y = YIELD STRENGTH OF STRUCTURAL STEEL (A36) = 36,000 PSI

FOR DETAILS OF ABUTMENTS AND RETAINING WALLS, SEE DWG. NOS. 26853 - 26880
 FOR DETAILS OF BENTS, SEE DWG. NO. 26881 THRU 26884
 FOR DETAILS OF SUPERSTRUCTURE, SEE DWG. NO. 26886 THRU 26894

METHOD OF DESIGN: LOAD FACTOR
LIVE LOAD: HS20
FOR MAINTENANCE OF TRAFFIC, SEE ROADWAY PLANS

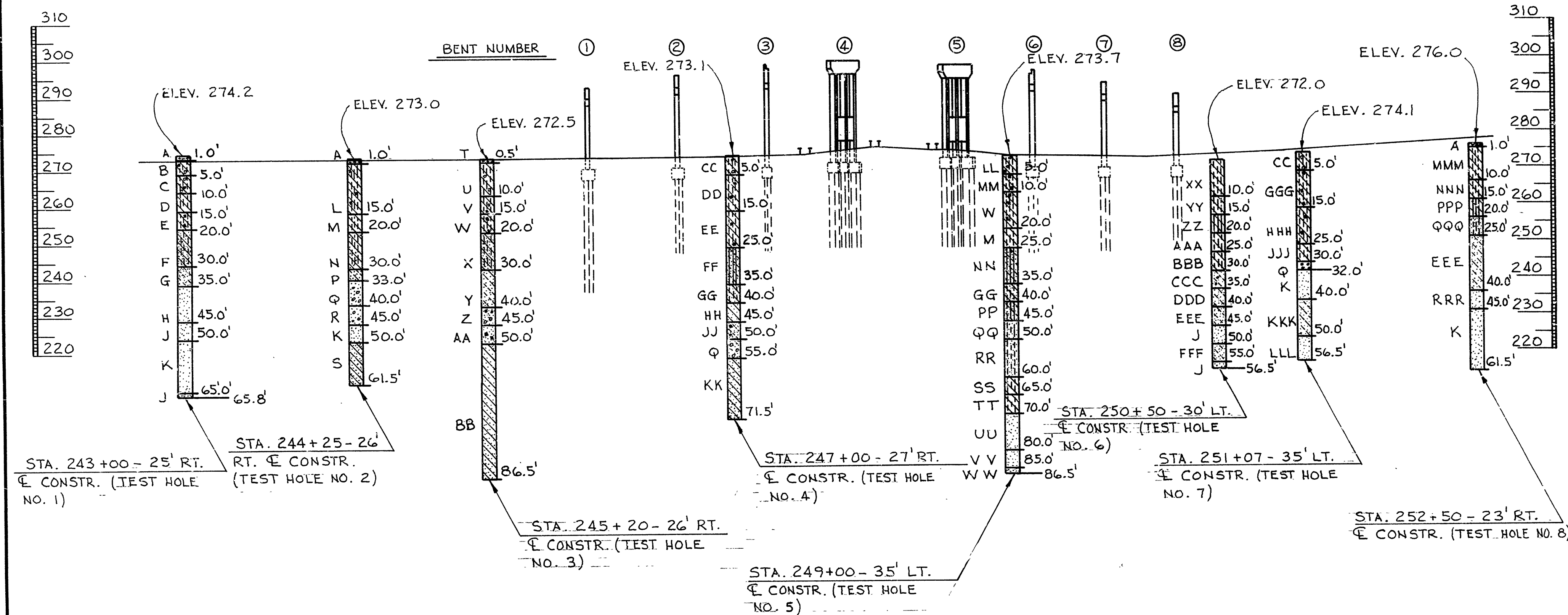
SHEET 3 OF 3
LAYOUT OF RR OVERPASS
HWY. 412 RAILROAD OVERPASS
(PARAGOULD)
GREENE COUNTY
ROUTE 412 SEC. 9
ARKANSAS STATE HIGHWAY COMMISSION
LITTLE ROCK, ARK.

DRAWN BY: TEB DATE: 10-5-83
CHECKED BY: ARW DATE: 10-14-83 SCALE: 1" = 20'-0"
DESIGNED BY: PTA DATE: _____
BRIDGE NO. **6087** DRAWING NO. **2685**

DATE REVISED	DATE FILMED	DATE REVISED	DATE FILMED	FED. ROAD NO.	STATE	FED. AID PROJ. NO.	SHEET NO.	TOTAL SHEETS
				6	ARK.			
				JOB NO.	100077	16	86	
				6087	BORINGS	26852		

BORING LEGEND

- A. CONCRETE AND ASPHALT PAVEMENT.
 B. MOIST, MEDIUM STIFF, GRAY SILTY CLAY WITH GRAVEL (FILL MATERIAL).
 C. MOIST, MEDIUM STIFF, GRAY SILTY CLAY WITH SOME GRAVEL.
 D. MOIST, VERY STIFF, GRAY SILTY CLAY.
 E. MOIST, STIFF, GRAY AND BROWN SILTY CLAY WITH ORGANIC MATTER.
 F. MOIST, SOFT, BROWN SANDY, SILTY CLAY.
 G. WET, LOOSE, BROWN CLAYEY SAND.
 H. WET, MEDIUM DENSE, BROWN SAND WITH CLAY SEAMS.
 J. WET, VERY DENSE, BROWN SAND.
 K. WET, DENSE, BROWN SAND.
 L. MOIST, MEDIUM STIFF TO STIFF, BROWN AND GRAY SILTY CLAY WITH ORGANIC MATTER.
 M. MOIST, VERY STIFF, BROWN AND GRAY SILTY CLAY.
 N. MOIST, STIFF, BROWN SILTY CLAY WITH SOME SAND.
 P. WET, LOOSE, BROWN CLAYEY SAND.
 Q. WET, MEDIUM DENSE, BROWN SAND AND GRAVEL.
 R. WET, DENSE, GRAY AND BROWN SAND AND GRAVEL WITH SOME CLAY.
 S. ALTERNATING LAYERS OF WET, HARD, BROWN AND GRAY SANDY CLAY AND WET, DENSE, BROWN AND GRAY CLAYEY SAND.
 T. CONCRETE SURFACE.
 U. MOIST, SOFT, GRAY SILTY CLAY WITH GRAVEL.
 V. MOIST, VERY STIFF, GRAY SILTY CLAY WITH ORGANIC MATTER.
 W. MOIST, STIFF, GRAY SILTY CLAY WITH ORGANIC MATTER.
 X. MOIST, MEDIUM STIFF, BROWN SILTY, SANDY CLAY.
 Y. WET, LOOSE TO MEDIUM DENSE, BROWN CLAYEY SAND.
 Z. WET, VERY DENSE, GRAY SAND AND GRAVEL.
 AA. WET, DENSE, GRAY AND BROWN SAND WITH CLAY SEAMS AND ORGANIC MATTER.
 BB. ALTERNATING LAYERS OF WET, STIFF TO VERY STIFF, GRAY AND BROWN CLAY AND WET, MEDIUM DENSE, GRAY AND BROWN SAND.
 CC. MOIST, MEDIUM STIFF, DARK BROWN SILTY CLAY WITH GRAVEL (FILL MATERIAL).
 DD. MOIST, MEDIUM STIFF TO STIFF, GRAY SILTY CLAY WITH ORGANIC MATTER.
 EE. MOIST, VERY STIFF TO HARD, GRAY SILTY CLAY WITH SOME ORGANIC MATTER.
 FF. WET, LOOSE, BROWN CLAYEY SILT WITH SOME SAND.
 GG. WET, MEDIUM STIFF, BROWN SILTY, SANDY CLAY.
 HH. WET, STIFF, BROWN AND GRAY SANDY, SILTY CLAY.
 JJ. WET, DENSE, GRAY CLAYEY SAND WITH ORGANIC MATTER.
 KK. ALTERNATING LAYERS OF WET, STIFF TO VERY STIFF, GRAY SANDY CLAY AND WET, MEDIUM DENSE, BROWN AND GRAY SAND.
 LL. MOIST, SOFT, DARK BROWN SILTY CLAY WITH GRAVEL (FILL MATERIAL).
 MM. MOIST, SOFT, GRAY SILTY CLAY WITH ORGANIC MATTER.
 NN. WET, MEDIUM DENSE, BROWN AND GRAY TO GRAY CLAYEY SILT WITH SOME SAND.
 PP. WET, LOOSE, BROWN CLAYEY, SANDY SILT.
 QQ. WET, MEDIUM DENSE, BROWN SILTY SAND WITH SOME CLAY.
 RR. WET, MEDIUM DENSE, BROWN SILTY SAND.
 SS. WET, HARD, GRAY AND BROWN SILTY, SANDY CLAY.
 TT. WET, VERY STIFF, GRAY AND BROWN SILTY, SANDY CLAY.
 UU. WET, MEDIUM DENSE, GRAY AND BROWN SAND WITH CLAY SEAMS.
 VV. WET, VERY DENSE, GRAY AND BROWN SAND.
 WW. WET, DENSE, GRAY SAND.
 XX. MOIST, MEDIUM STIFF, GRAY AND BROWN SILTY CLAY.
 YY. MOIST, STIFF, GRAY SILTY CLAY.
 ZZ. MOIST, DENSE, GRAY AND BROWN CLAYEY SILT.
 AAA. WET, MEDIUM STIFF, BROWN SILTY CLAY.
 BBB. WET, SOFT, BROWN SILTY CLAY.
 CCC. WET, VERY LOOSE, BROWN CLAYEY SAND WITH SOME GRAVEL.
 DDD. WET, DENSE, BROWN CLAYEY SAND.
 EEE. WET, MEDIUM DENSE, GRAY AND BROWN CLAYEY SAND.
 FFF. WET, DENSE, GRAY AND BROWN CLAYEY SAND.
 GGG. MOIST, STIFF, GRAY TO GRAY AND BROWN SILTY CLAY WITH ORGANIC MATTER.
 HHH. MOIST, STIFF, BROWN SILTY CLAY WITH SOME ORGANIC MATTER.
 JJJ. WET, MEDIUM STIFF, BROWN SANDY, SILTY CLAY.
 KKK. WET, DENSE TO MEDIUM DENSE, GRAY AND BROWN CLAYEY SAND.
 LLL. WET, DENSE TO VERY DENSE, BROWN SAND.
 MMM. MOIST, STIFF, BROWN SILTY CLAY.
 NNN. MOIST TO WET, SOFT, BROWN SILTY CLAY.
 PPP. WET, VERY LOOSE, BROWN CLAYEY SILT.
 QQQ. WET, MEDIUM DENSE, GRAY AND BROWN SILTY SAND.
 RRR. WET, MEDIUM DENSE, BROWN SAND.

"N" VALUESSTA. 243+00 - 25' RIGHT OF C CONSTR.

5.5'-6.5' N=8; 10.5'-11.5' N=22; 15.5'-16.5' N=11; 20.5'-21.5' N=4;
 25.5'-26.5' N=4; 30.5'-31.5' N=9; 35.5'-36.5' N=25; 40.5'-41.5' N=24;
 45.5'-46.5' N= OVER 60; 50.5'-51.5' N=47; 55.5'-56.5' N=40; 60.5'-61.5'
 N=42; 65.5'-65.8' N= OVER 60

STA. 244+25 - 26' RIGHT OF C CONSTR.

5.5'-6.5' N=7; 10.5'-11.5' N=10; 15.5'-16.5' N=21; 20.5'-21.5' N=10;
 25.5'-26.5' N=9; 30.5'-31.5' N=8; 33.5'-34.5' N=24; 40.5'-41.5' N=37;
 45.5'-46.5' N=43; 50.5'-51.5' N=35; 55.5'-56.5' N=40; 60.5'-61.5'
 N=35

STA. 245+20 - 26' RIGHT OF C CONSTR.

5.5'-6.5' N=4; 10.5'-11.5' N=17; 15.5'-16.5' N=13; 20.5'-21.5' N=5;
 25.5'-26.5' N=6; 30.5'-31.5' N=10; 35.5'-36.5' N=18; 40.5'-41.5' N=56;
 45.5'-46.5' N=40; 50.5'-51.5' N=30; 55.5'-56.5' N=31; 60.5'-61.5' N=26;
 65.5'-66.5' N=26; 70.5'-71.5' N=44; 75.5'-76.5' N=30; 80.5'-81.5' N=37;
 85.5'-86.5' N=33

STA. 247+00 - 27' RIGHT OF C CONSTR.

5.5'-6.5' N=6; 10.5'-11.5' N=9; 15.5'-16.5' N=16; 20.5'-21.5' N=31;
 25.5'-26.5' N=4; 30.5'-31.5' N=7; 35.5'-36.5' N=8; 40.5'-41.5' N=14;
 45.5'-46.5' N=38; 50.5'-51.5' N=15; 55.5'-56.5' N=30; 60.5'-61.5' N=32;
 65.5'-66.5' N=33; 70.5'-71.5' N=38;

STA. 249+00 - 35' LEFT OF C CONSTR.

5.5'-6.5' N=2; 10.5'-11.5' N=10; 15.5'-16.5' N=11; 20.5'-21.5' N=16;
 25.5'-26.5' N=14; 30.5'-31.5' N=12; 35.5'-36.5' N=8; 40.5'-41.5' N=
 6; 45.5'-46.5' N=21; 50.5'-51.5' N=21; 55.5'-56.5' N=26; 60.5'-61.5'
 N=37; 65.5'-66.5' N=18; 70.5'-71.5' N=22; 75.5'-76.5' N=20; 80.5'-
 81.5' N= OVER 60; 85.5'-86.5' N= OVER 60

STA. 250+50 - 30' LEFT OF C CONSTR.

5.5'-6.5' N=7; 10.5'-11.5' N=10; 15.5'-16.5' N=42; 20.5'-21.5' N=6;
 25.5'-26.5' N=4; 30.5'-31.5' N=3; 35.5'-36.5' N=31; 40.5'-41.5' N=
 30; 45.5'-46.5' N=54; 50.5'-51.5' N=36; 55.5'-56.5' N=54

STA. 251+07 - 35' LEFT OF C CONSTR.

5.5'-6.5' N=11; 10.5'-11.5' N=14; 15.5'-16.5' N=10; 20.5'-21.5' N=10;
 25.5'-26.5' N=7; 30.5'-31.5' N=22; 35.5'-36.5' N=32; 40.5'-41.5' N=
 32; 45.5'-46.5' N=30; 50.5'-51.5' N=36; 55.5'-56.5' N= OVER 60

STA. 252+50 - 23' RIGHT OF C CONSTR.

5.5'-6.5' N=13; 10.5'-11.5' N=4; 15.5'-16.5' N=4; 20.5'-21.5' N=18;
 25.5'-26.5' N=23; 30.5'-31.5' N=21; 35.5'-36.5' N=26; 40.5'-41.5'
 N=30; 45.5'-46.5' N=32; 50.5'-51.5' N=39; 55.5'-56.5' N=44;
 60.5'-61.5' N=49

DETAILS OF BORINGS

HWY. 412 RAILROAD OVERPASS

(PARAGOULD)

GREENE COUNTY

ROUTE 412 SEC. 9

ARKANSAS STATE HIGHWAY COMMISSION

LITTLE ROCK, ARK.

DRAWN BY: TEB DATE: 1-5-84
 CHECKED BY: ARW DATE: 1-6-84 SCALE: 1"=50'-0" (HORIZONTAL)
 DESIGNED BY: BTR DATE: 1-6-84 1"=20'-0" (VERTICAL)

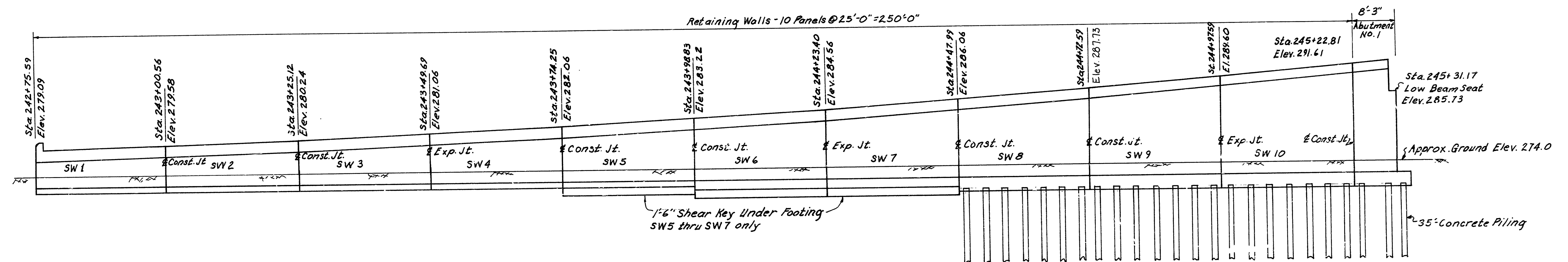
BRIDGE NO. 6087

DRAWING NO. 26852

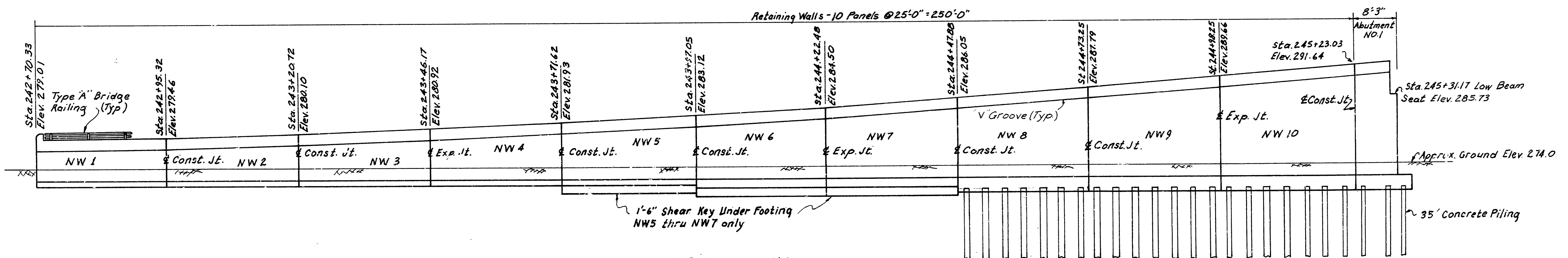
Paul Pinkerton
 BRIDGE ENGINEER

DATE REVISED	DATE FILMED	DATE REVISED	DATE FILMED	FED. ROAD NO.	STATE	FED. AID PROJ. NO.	SHEET NO.	TOTAL SHEETS
				6	ARK			
						JOB NO.	100077	13

6087 Ret. Wall Layout 26854



ELEVATION SOUTH WEST RETAINING WALL
(Looking North)

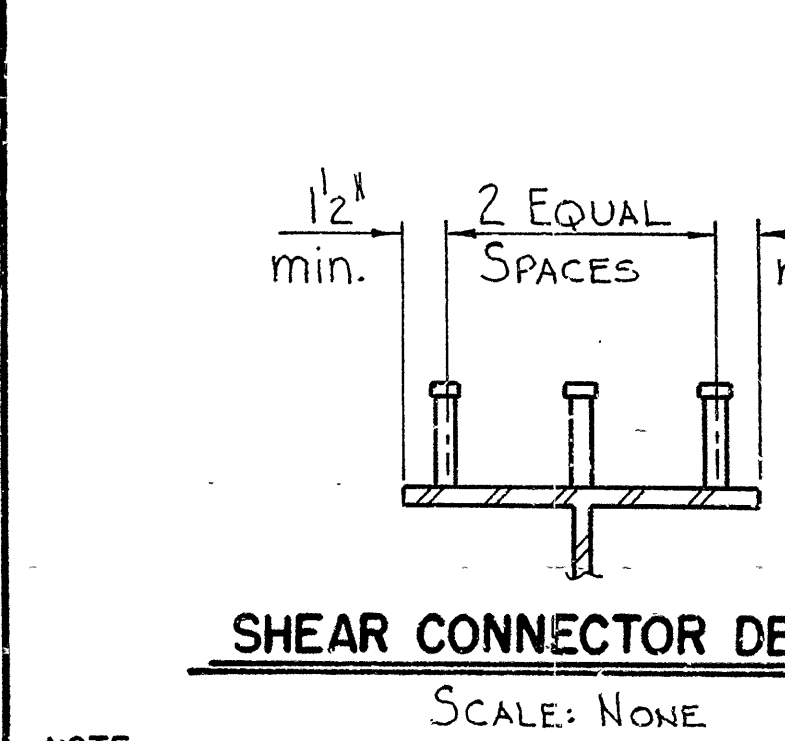
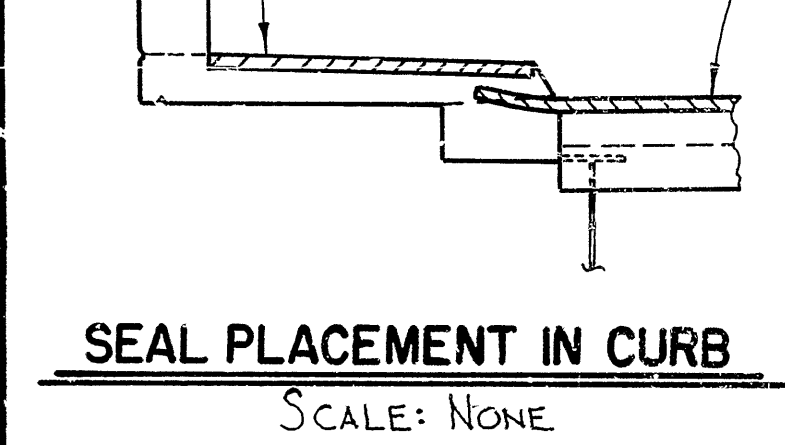
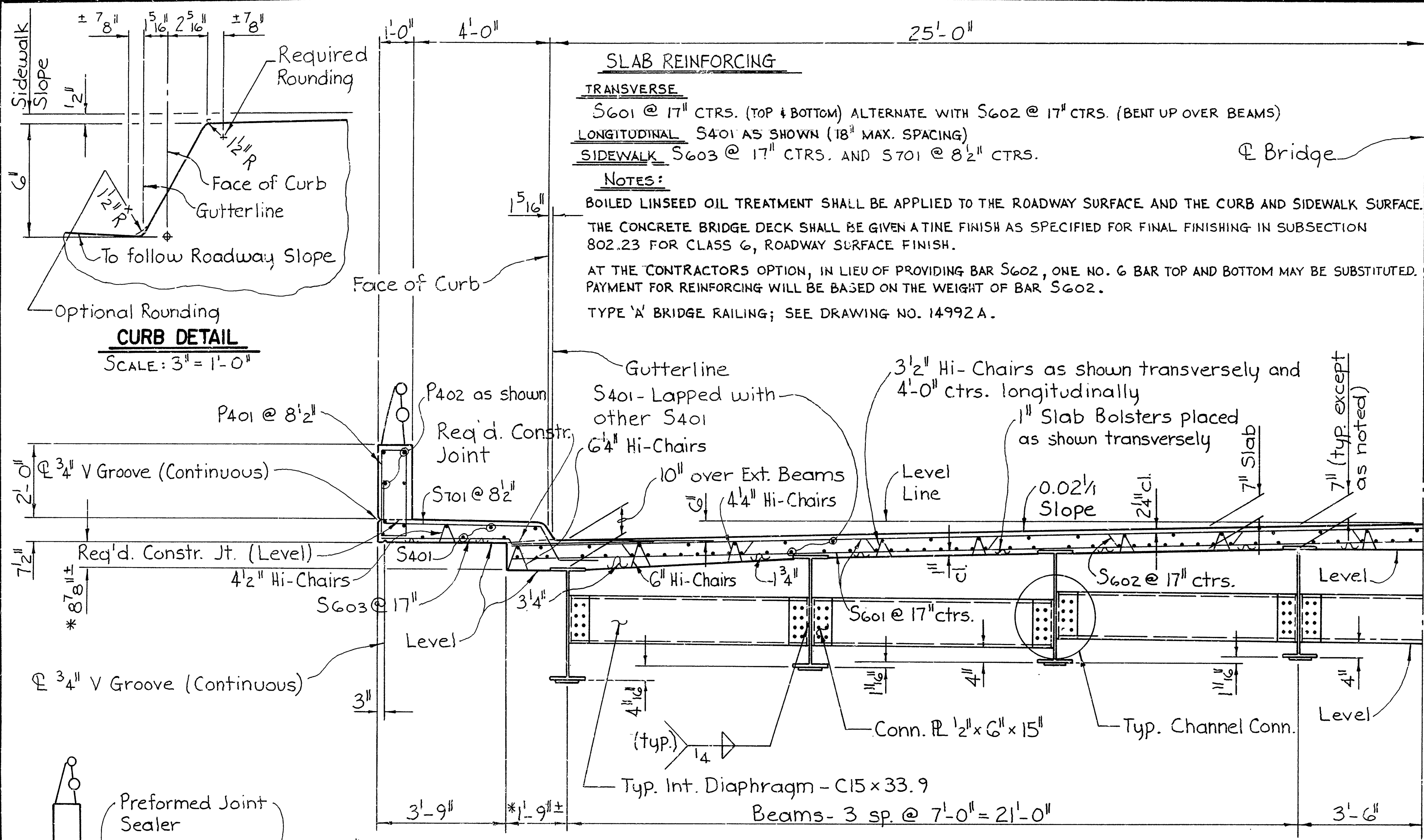


ELEVATION NORTH WEST RETAINING WALL
(Looking North)

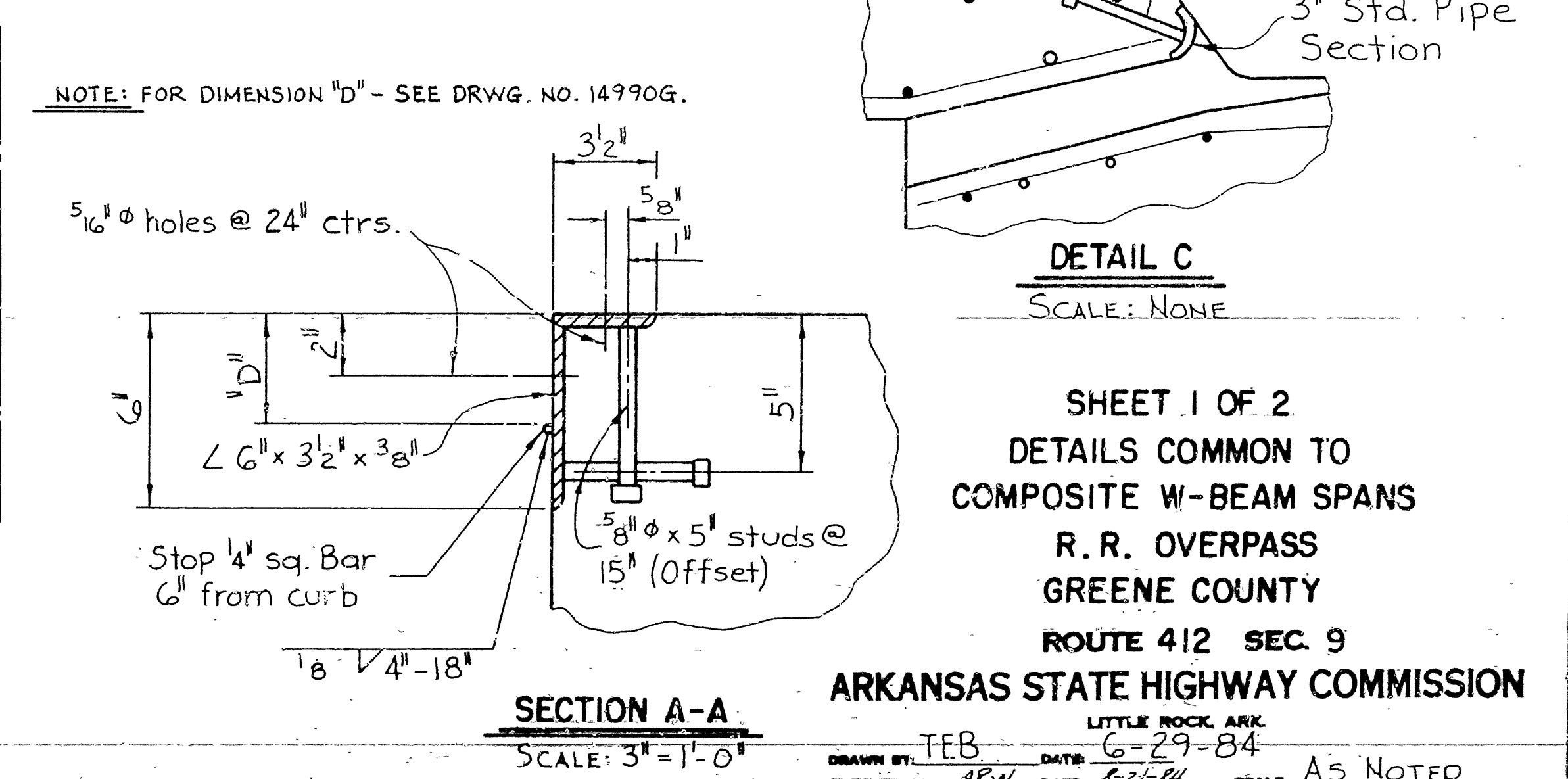
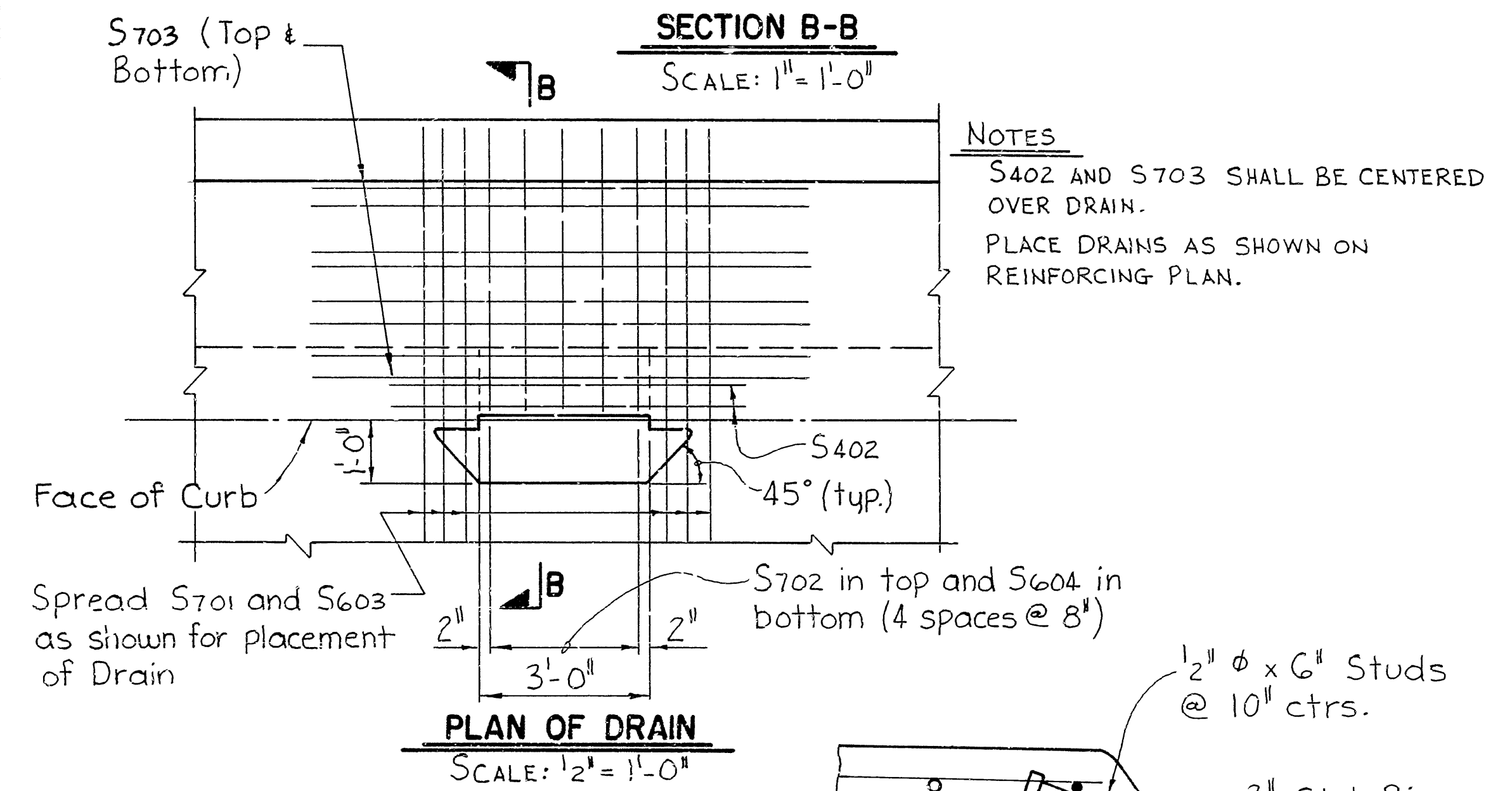
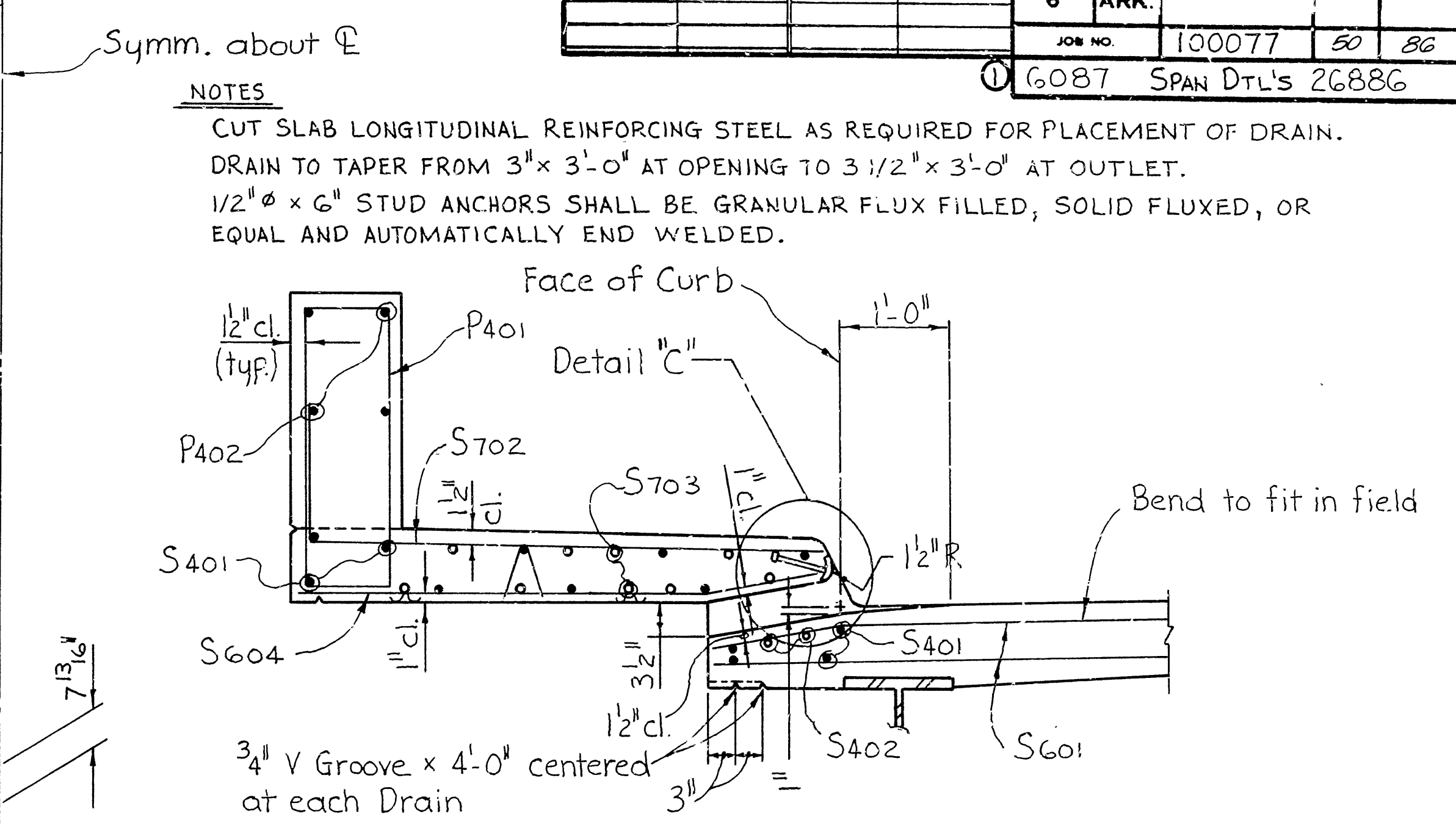
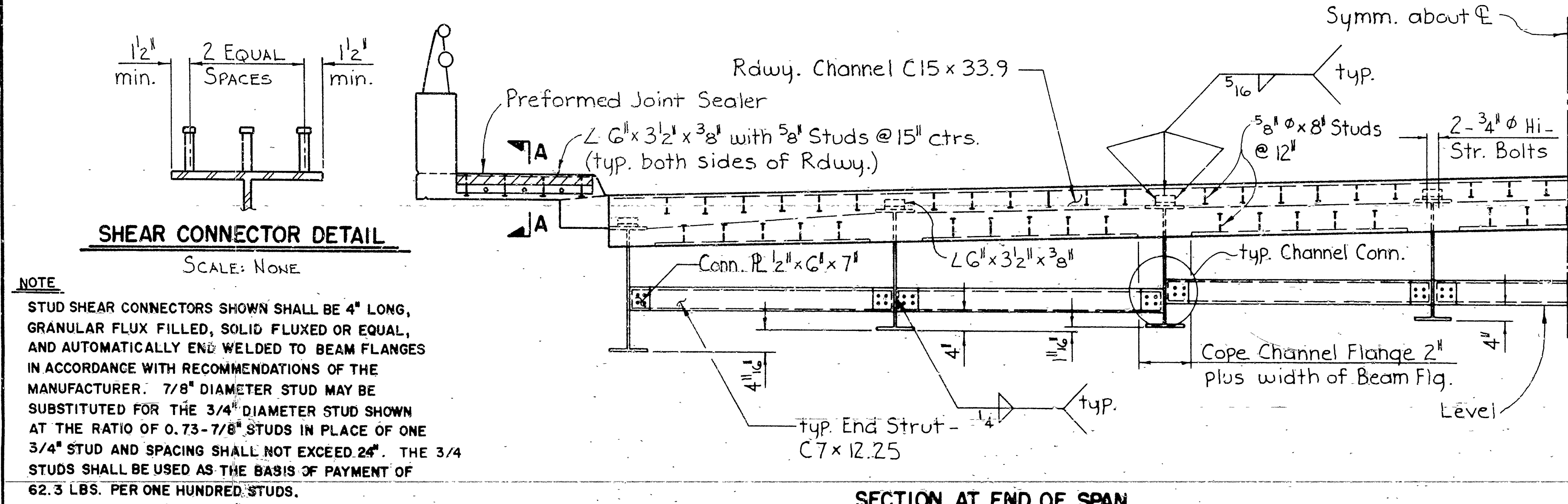
ALTERNATE NO. 1
SHEET 2 OF 3
LAYOUT OF RETAINING WALLS
HWY. 412 RAILROAD OVERPASS
(PARAGOULD)
GREEN COUNTY
ROUTE 412 SEC. 9
ARKANSAS STATE HIGHWAY COMMISSION
LITTLE ROCK, ARK.

DESIGNED BY: *[Signature]* DATE: 3-7-84
CHECKED BY: *[Signature]* DATE: 3-7-84
BRIDGE NO. 6087 DRAWING NO. 26854
SCALE: 1"=10'

DATE REVISED	DATE FILLED	DATE REVISED	DATE FILLED	FED. ROAD NO.	STATE	FED. AID PROJ. NO.	SHEET NO.	TOTAL SHEETS
				6	ARK.			
				JOB NO.		100077	50	86
						6087	SPAN DTL'S 26886	



NOTE
STUD SHEAR CONNECTORS SHOWN SHALL BE 4" LONG, GRANULAR FLUX FILLED, SOLID FLUXED OR EQUAL, AND AUTOMATICALLY END WELDED TO BEAM FLANGES IN ACCORDANCE WITH RECOMMENDATIONS OF THE MANUFACTURER. 7/8" DIAMETER STUD MAY BE SUBSTITUTED FOR THE 3/4" DIAMETER STUD SHOWN AT THE RATIO OF 0.73-7/8" STUDS IN PLACE OF ONE 3/4" STUD AND SPACING SHALL NOT EXCEED 24". THE 3/4" STUDS SHALL BE USED AS THE BASIS OF PAYMENT OF 62.3 LBS. PER ONE HUNDRED STUDS.



SHEET 1 OF 2
DETAILS COMMON TO
COMPOSITE W-BEAM SPANS
R.R. OVERPASS
GREENE COUNTY
ROUTE 412 SEC. 9
ARKANSAS STATE HIGHWAY COMMISSION
LITTLE ROCK, ARK.
6-29-84
DRAWN BY: TEB
CHECKED BY: ARW
DESIGNED BY: crh
DATE: 6-27-84
SCALE: AS NOTED
BRIDGE NO. 6087
DRAWING NO. 26886

DATE REVISED	DATE FILMED	DATE REVISED	DATE FILMED	FED. ROAD NO.	STATE	FED. AID PROJ. NO.	SHEET NO.	TOTAL SHEETS
				6	ARK.		52	86
				JOB NO.	100077		52	86
				6087	SPAN DETAILS 26888			

BAR LIST PER SPAN

MARK	NO. REQ'D.	LENGTH	PIN. DIA.	BENDING DIAGRAMS
P401	183	7'-0"	2"	
P402	12	21'-8"	STR.	
P403*	12	21'-1"	STR.	
S401	290	33'-1"	STR.	
S402**	4	6'-4"	STR.	
S601	92	52'-2"	STR.	
S603	92	8'-2"	3/4"	
S604**	10	4'-9"	3/4"	
S605	45	53'-3"	3/4"	
S701	184	7'-8"	5/4"	
S702**	10	5'-7"	5/4"	<p>NOTES</p> <p>FOR BENDING DIAGRAMS NOT SHOWN - SEE DRWG. NO. 26891</p> <p>* DESIGNATED AS P402 IN TYPICAL ROADWAY SECTION - SEE DRWG. 26886</p> <p>** NOT USED IN SPAN NO. 1 (FOR DRAINS ONLY.)</p> <p>1/2" OVERTOLERANCE; NO UNDERTOLERANCE</p>
S703**	18	8'-10"	STR.	
				DIMENSIONS ARE OUT TO OUT OF BARS.

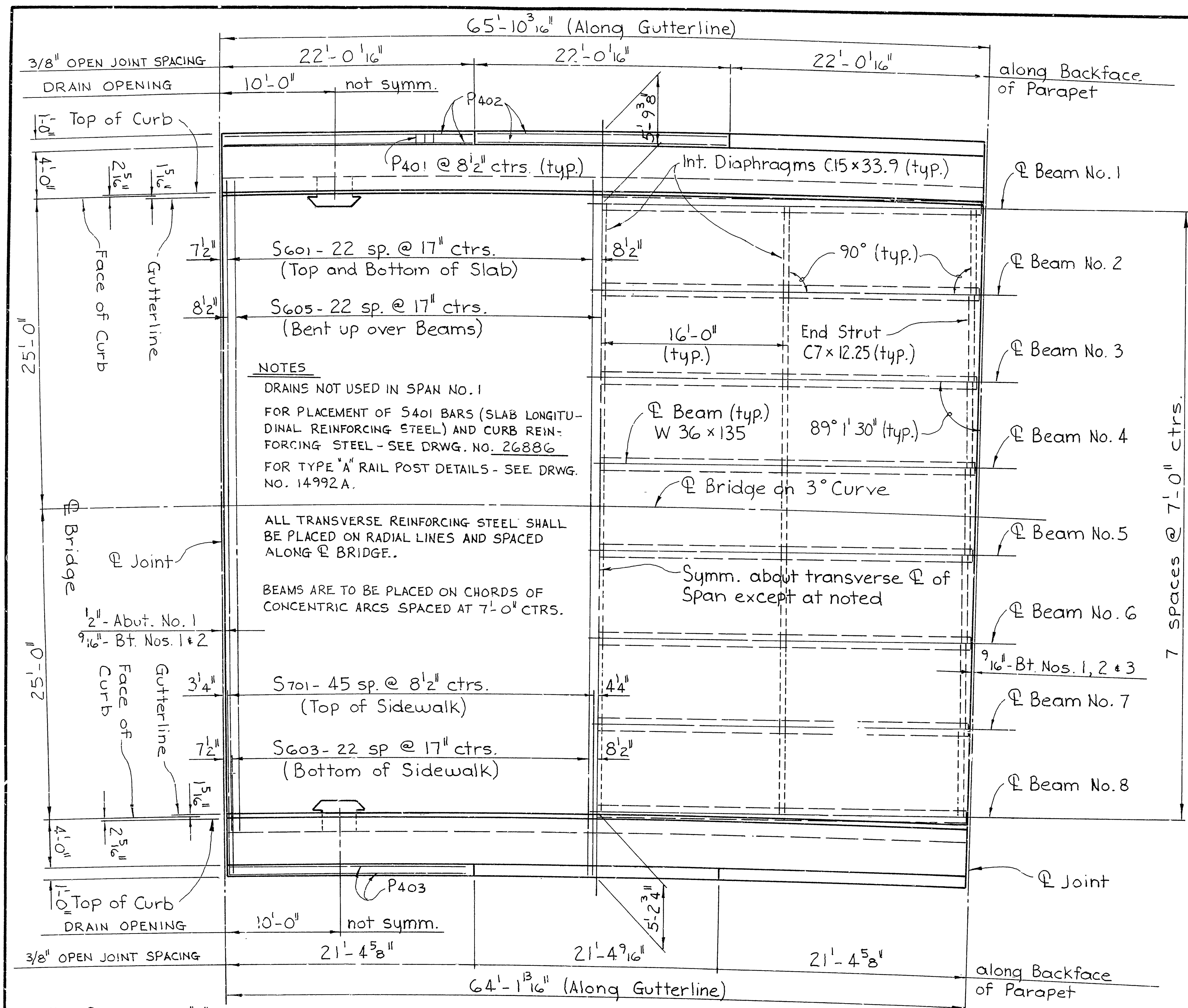
DEAD LOAD DEFLECTIONS

LOAD	LOCATION	INTERIOR BEAM		EXTERIOR BEAM	
		1/4 PT.	1/2 PT.	1/4 PT.	1/2 PT.
BEAM AND DIAPHRAGM		3/16"	1/4"	3/16"	1/4"
BEAM, DIAPHRAGM AND SLAB		3/4"	1 1/16"	3/4"	1 1/16"
BEAM, DIAPHRAGM, SLAB, SIDEWALK, PARAPET AND RAIL		13/16"	1 1/8"	15/16"	1 5/16"

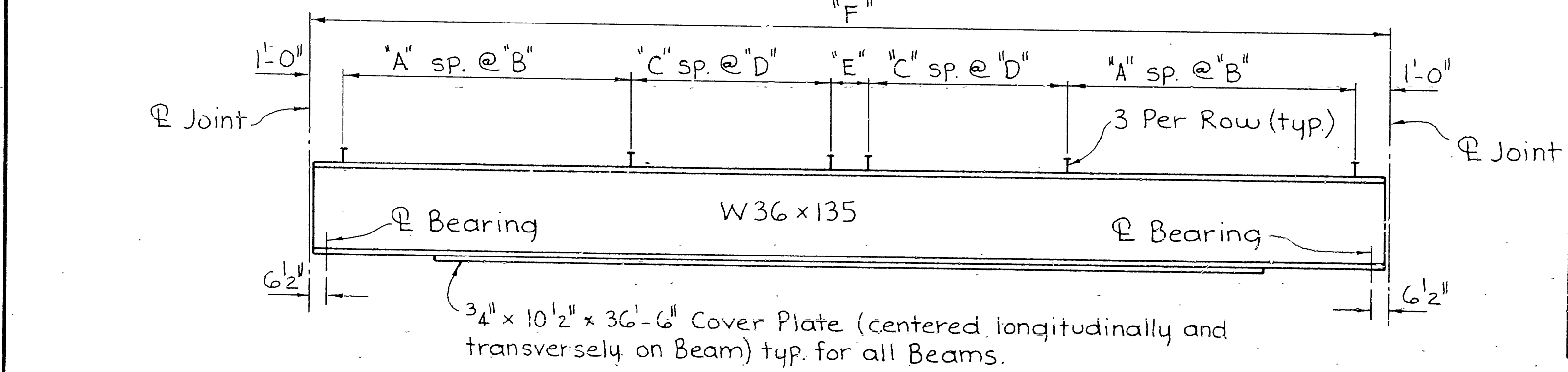
TABLE OF VARIABLES

LOCATION	A	B	C	D	E	F
BEAM No. 1	14	12"	14	15"	10"	65'-10"
BEAM No. 2	14	12"	14	15"	7 1/8"	65'-7 1/8"
BEAM No. 3	15	12"	13	15"	10 1/4"	65'-4 1/4"
BEAM No. 4	16	12"	13	15"	13 3/8"	65'-1 3/8"
BEAM No. 5	16	12"	12	15"	10 9/16"	64'-10 9/16"
BEAM No. 6	16	12"	12	15"	7 1/16"	64'-7 1/16"
BEAM No. 7	17	12"	11	15"	10 13/16"	64'-4 13/16"
BEAM No. 8	18	12"	10	15"	13 15/16"	64'-1 15/16"

SUPPLEMENTAL DETAILS
 65'-0" COMPOSITE W-BEAM SPANS
 R.R. OVERPASS
 GREENE COUNTY
 ROUTE 412 SEC. 9
 ARKANSAS STATE HIGHWAY COMMISSION
 LITTLE ROCK, ARK.
 DATE: 6-29-84
 DRAWN BY: TEB
 CHECKED BY: ALN
 DESIGNED BY: GCH
 SCALE: AS NOTED
 BRIDGE NO. 6087 DRAWING NO. 26888

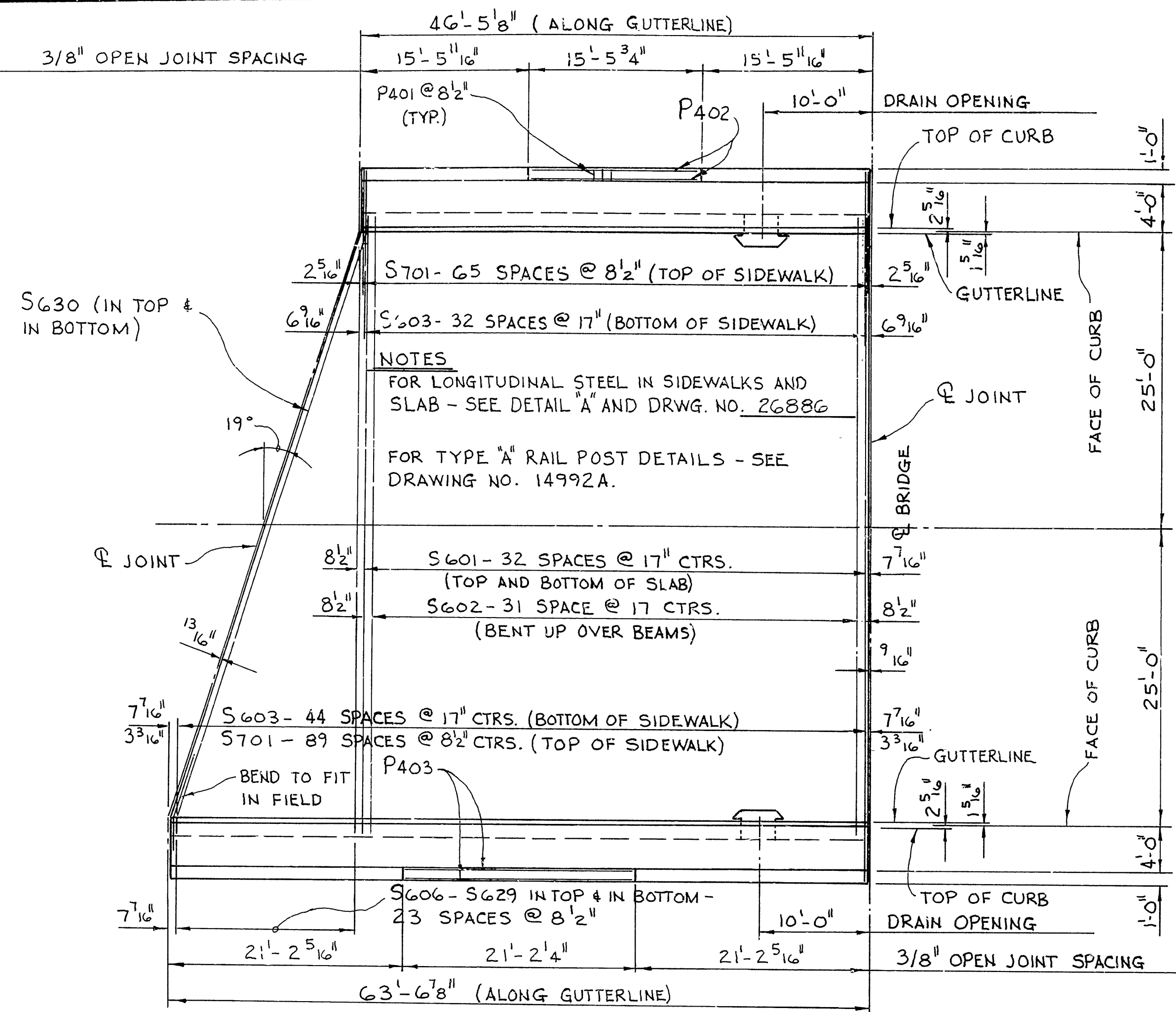


PLAN
 SCALE: 3/16" = 1'-0"



W-BEAM ELEVATION
 SCALE: NONE

DATE REVISED	DATE FILMED	DATE REVISED	DATE FILMED	FED. ROAD NO.	STATE	FED. AID PROJ. NO.	SHEET NO.	TOTAL SHEETS
				6	ARK.			
				JOB NO.	100077	54	80	
				6087 SPAN DETAILS 26890				



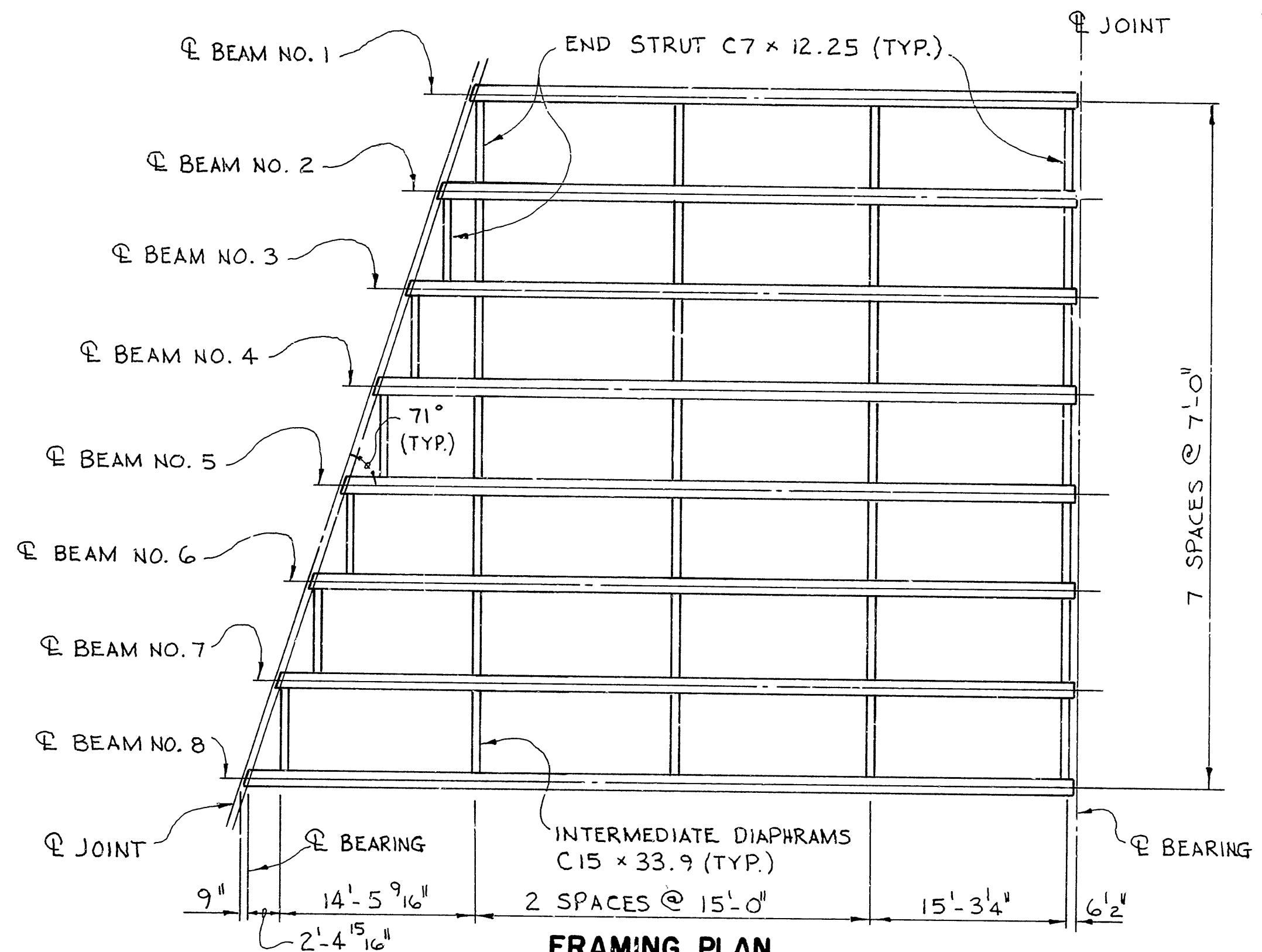
REINFORCING PLAN
SCALE: 1/8" = 1'-0"

DEAD LOAD DEFLECTIONS

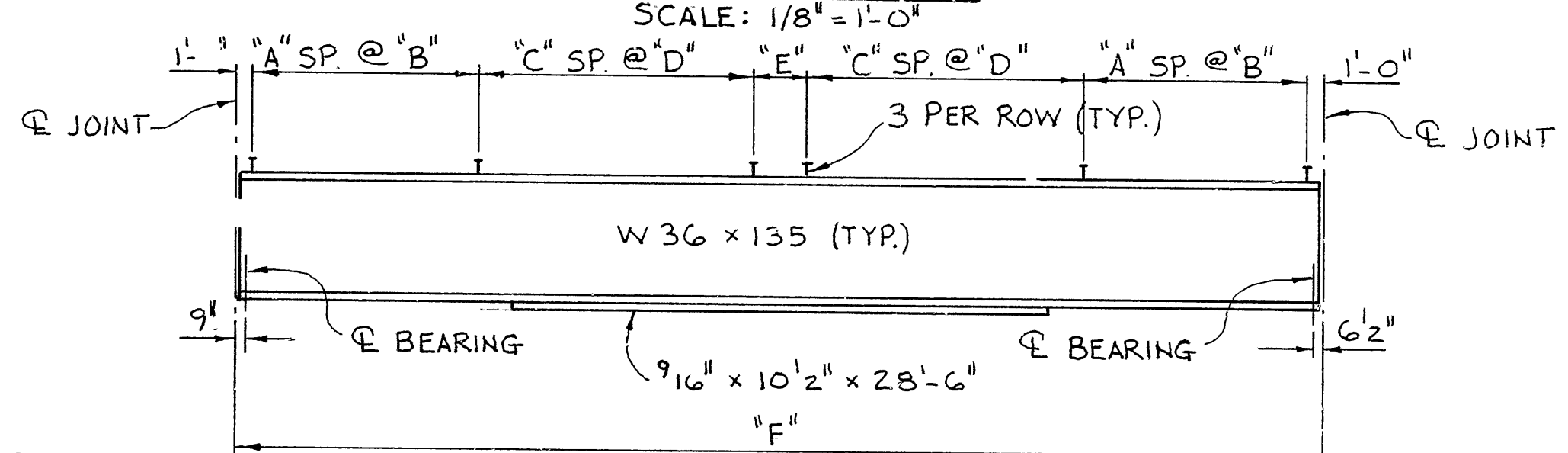
LOCATION LOAD	STRUCTURAL STEEL		STEEL AND SLAB		STEEL, SLAB, PARAPET, SIDE-WALK AND RAIL	
	1/4 PT.	1/2 PT.	1/4 PT.	1/2 PT.	1/4 PT.	1/2 PT.
BEAM NO. 1	1 1/16"	1 1/16"	1 1/4"	5 1/16"	5 1/16"	7 1/16"
BEAM NO. 2	1 1/16"	1 1/16"	5 1/16"	3 8"	5 1/16"	7 1/16"
BEAM NO. 3	1 1/16"	1 8"	3 8"	1 2"	3 8"	9 1/16"
BEAM NO. 4	1 1/16"	1 8"	7 1/16"	9 1/16"	7 1/16"	5 8"
BEAM NO. 5	1 8"	1 8"	1 2"	11 1/16"	9 1/16"	3 4"
BEAM NO. 6	1 8"	3 1/16"	5 8"	13 1/16"	11 1/16"	15 1/16"
BEAM NO. 7	1 8"	3 1/16"	5 8"	7 8"	11 1/16"	15 1/16"
BEAM NO. 8	1 8"	3 1/16"	3 4"	1 1"	15 1/16"	1 1/4"

TABLE OF VARIABLES

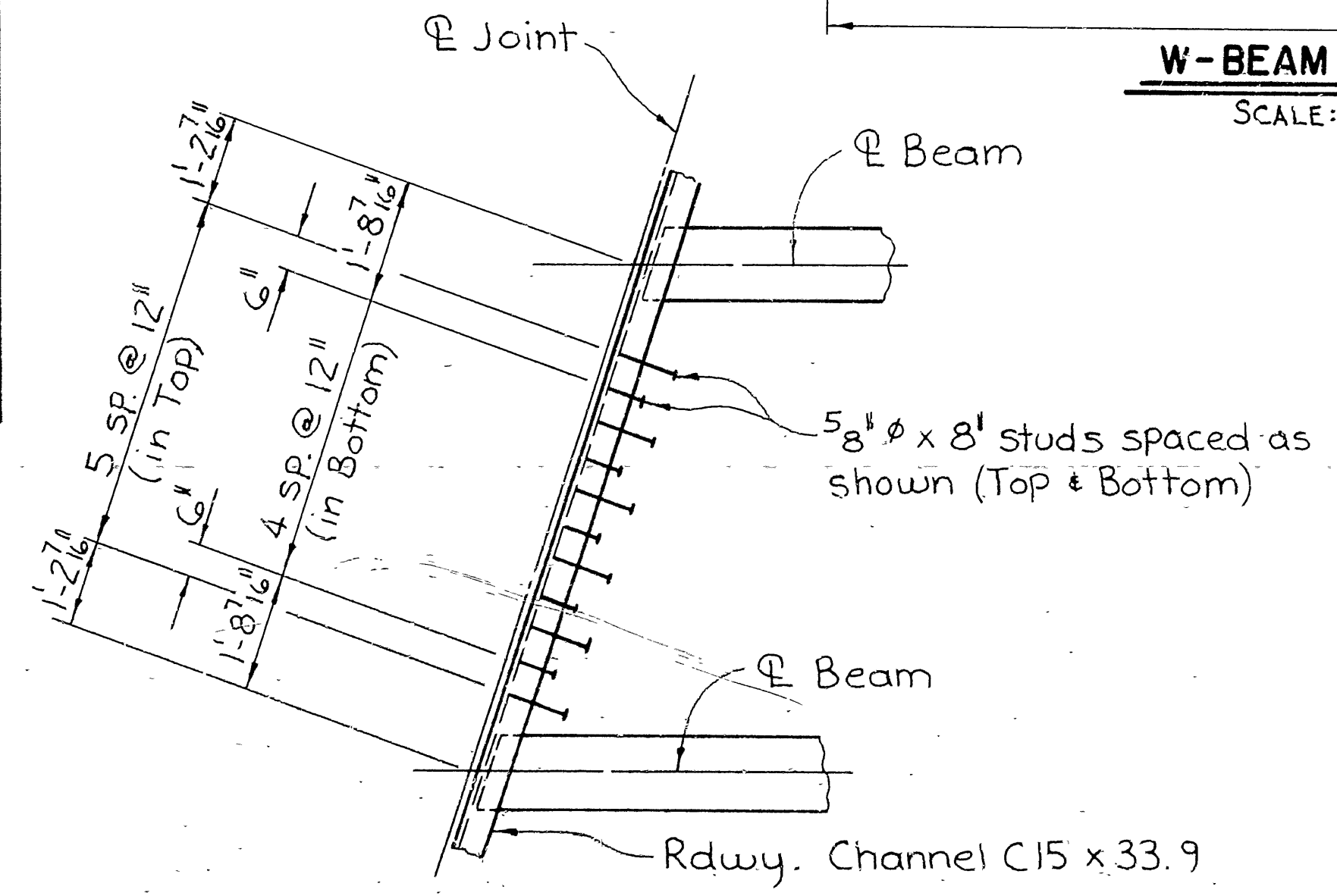
BM. NO.	COVER PLATE SIZE	A	B	C	D	E	F
1	—	13	10"	12	11"	10 3/4"	46'-6 3/4"
2	—	11	12"	12	12"	11 1/16"	48'-11 1/16"
3	—	13	12"	9	15"	10 5/8"	51'-4 5/8"
4	—	13	12"	10	15"	9 9/16"	53'-9 9/16"
5	—	14	12"	10	15"	14 1/16"	56'-2 7/16"
6	—	14	12"	11	15"	13 3/8"	58'-7 3/8"
7	9 1/16" x 10 1/2" x 28'-6"	14	12"	12	15"	12 5/16"	61'-0 5/16"
8	9 1/16" x 10 1/2" x 28'-6"	14	12"	13	15"	11 1/4"	63'-5 1/4"



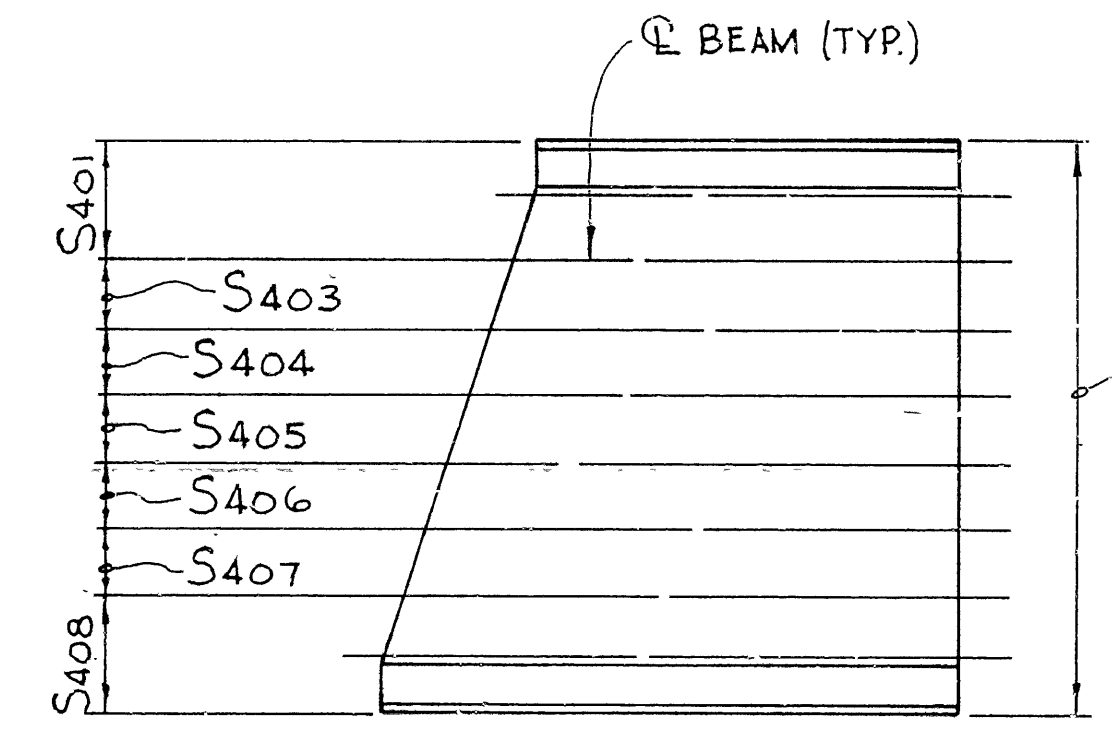
FRAMING PLAN
SCALE: 1/8" = 1'-0"



W-BEAM ELEVATION
SCALE: NONE



ANCHOR STUD SPACING DETAILS
SCALE: 1/2" = 1'-0"



DETAIL A
SCALE: 1" = 20'-0"

MARK	NO. REQ'D	LENGTH	PIN DIA.	BENDING DIAGRAMS
P401	156	7'-0"	2"	
P402	12	15'-2"	STR.	
P403*	12	20'-10"	STR.	
S401	60	25'-1"	STR.	
S402	4	6'-4"	STR.	
S403	34	26'-3"	STR.	
S404	34	27'-6"	STR.	
S405	34	28'-8"	STR.	
S406	34	29'-11"	STR.	
S407	34	31'-1"	STR.	
S408	60	32'-4"	STR.	
S601	66	52'-2"	STR.	
S602	32	53'-4"	3 3/4"	
S603	78	8'-2"	3 3/4"	
S604	10	4'-5"	3 3/4"	
S606-S629	2 EACH	49'-8" TO 2'-5"	STR.	
S630	2	55'-0"	STR.	
S701	156	7'-8"	5 1/4"	
S702	10	5'-7"	5 1/4"	
S703	18	8'-10"	STR.	

NOTE
FOR BENDING DIAGRAMS - SEE
DRWG. NO. 26891

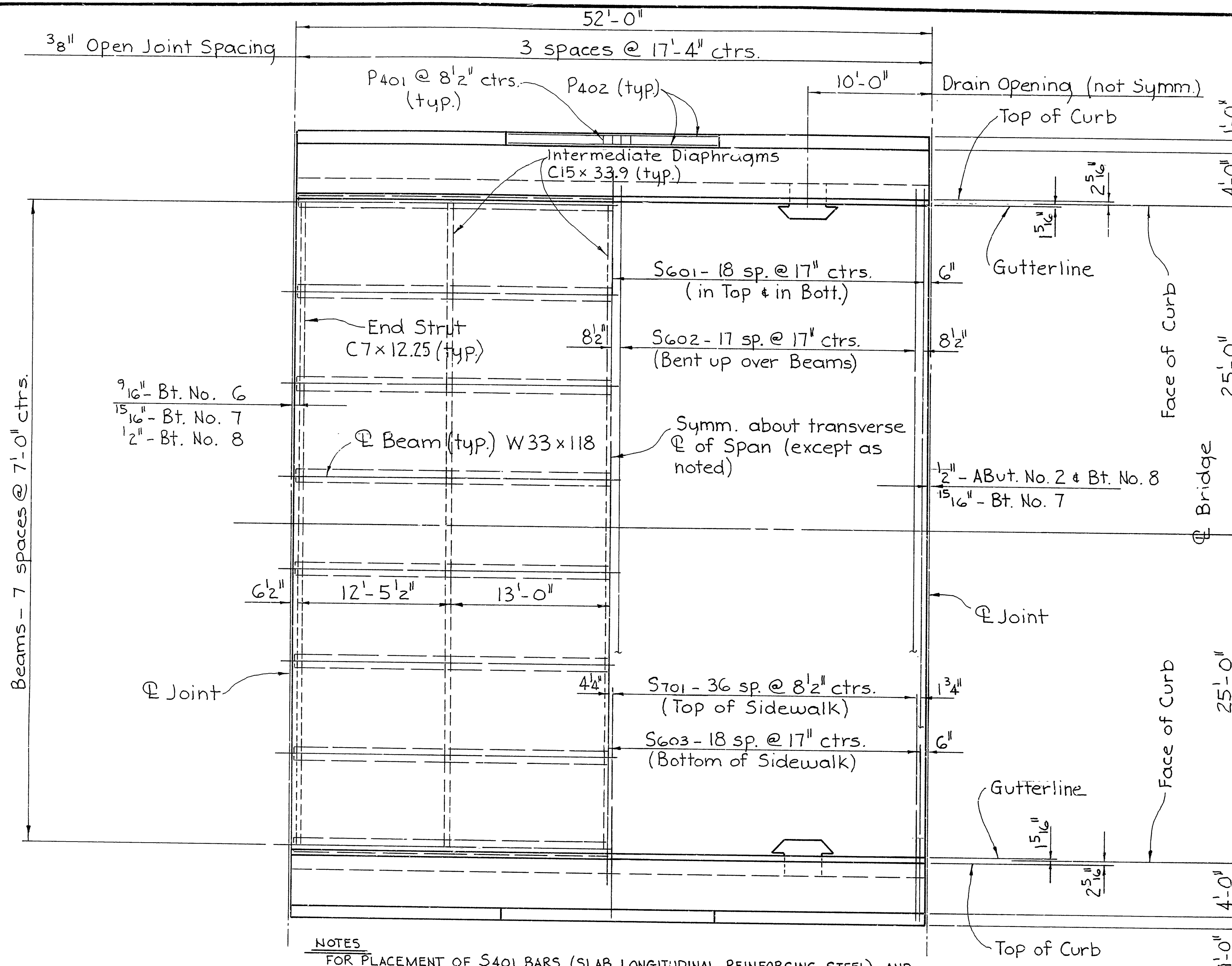
* DESIGNATED AS P402 IN
TYPICAL ROADWAY SECTION -
SEE DRWG. NO. 26886

DIMENSIONS ARE OUT TO
OUT OF BARS.

SPAN NO. 6
SUPPLEMENTAL DETAILS
55'-0" COMPOSITE W-BEAM SPAN
R.R. OVERPASS
GREENE COUNTY
ROUTE 412 SEC. 9
ARKANSAS STATE HIGHWAY COMMISSION

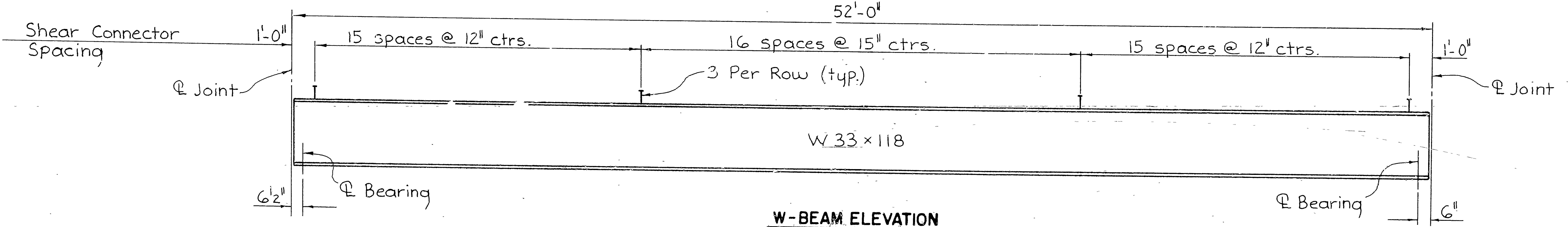
LITTLE ROCK, ARK.
DRAWN BY: TEB DATE: 6-29-84
CHECKED BY: ARW DATE: 8-30-84 SCALE: AS NOTED
DESIGNED BY: RCH DATE: 1-84
BRIDGE NO. 6087 DRAWING NO. 26890

DATE REVISION	DATE FILMED	DATE REVISION	DATE FILMED	FED. ROAD NO.	STATE	FED. AID PROJ. NO.	SHEET NO.	TOTAL SHEETS
				6	ARK.			
				JOB NO.	100077		55	80
				6087	SPAN DETAILS	26891		



NOTES
FOR PLACEMENT OF S401 BARS (SLAB LONGITUDINAL REINFORCING STEEL) AND CURB REINFORCING STEEL - SEE DRAWING NO. 26886
FOR TYPE "A" RAIL POST DETAILS - SEE DRAWING NO. 14992A.

PLAN
SCALE: 3/16" = 1'-0"



W-BEAM ELEVATION
SCALE: 3/8" = 1'-0"

BAR LIST PER SPAN

MARK	NO. REQ'D.	LENGTH	PIN. DIA.	BENDING DIAGRAMS
P401	150	7'-0"	2"	
P402	24	17'-0"	STR.	
S401	290	26'-7"	STR.	
S402	4	6'-4"	STR.	
S601	74	52'-2"	STR.	
S602	36	53'-4"	3 3/4"	
S603	74	8'-2"	3 3/4"	
S604	10	4'-9"	3 3/4"	
S701	148	7'-8"	5 1/4"	
S702	10	5'-7"	5 1/4"	
S703	18	8'-10"	STR.	
S704				

DIMENSIONS ARE OUT TO OUT OF BARS.

DEAD LOAD DEFLECTIONS

LOCATION LOAD	INTERIOR BEAM		EXTERIOR BEAM	
	1/4 PT.	1/2 PT.	1/4 PT.	1/2 PT.
BEAM AND DIAPHRAGM	1/16"	1/8"	1/16"	1/8"
BEAM, DIAPHRAGM & SLAB	1/2"	1 1/16"	1/2"	1 1/16"
BEAM, DIAPHRAGM, SLAB, SIDEWALK, PARAPET AND RAIL	1/2"	3/4"	5/8"	1 3/16"

SUPPLEMENTAL DETAILS
52'-0" COMPOSITE W-BEAM SPANS
R. R. OVERPASS
GREENE COUNTY
ROUTE 412 SEC. 9
ARKANSAS STATE HIGHWAY COMMISSION

LITTLE ROCK, ARK.
DRAWN BY: TEB DATE: 6-29-84
CHECKED BY: RSW DATE: 8-22-84
DESIGNED BY: CJA DATE: 1-84
BRIDGE NO. 6087 DRAWING NO. 26891

