

DATE REVISED	DATE FILMED	DATE REVISED	DATE FILMED	FED. ROAD NO.	STATE	FED. AID PROJ.	FISCAL YEAR	SHEET NO.	TOTAL SHEETS
9-1-70	10-9-70			6	ARK.	F-526 -1(7)		13	54
				JOB NO.		10662			
				① 5266 Layout Eight Mile 16355					

# MAINTENANCE OF TRAFFIC & REMOVAL OF OLD STRUCTURE

THE CONTRACTOR SHALL CONSTRUCT A DETOUR BRIDGE APPROXIMATELY 55' DOWNSTREAM FROM THE CENTERLINE, APPROXIMATELY 120' LONG, WITH 20'-0" CLEAR ROADWAY, TO HIS LOADING AND DECK ELEVATION 272.8. SEE SPECIAL PROVISION 1008-1.

THE OLD BRIDGE NO. 1508, CONSISTS OF TWO R.C. WINGWALL ABUTMENTS ON UNTREATED TIMBER PILES, AND ONE 80'-0" LOW TRUSS SPAN WITH CONCRETE DECK, 20'-0" WIDE.

ALL STRUCTURAL STEEL IN THE 80'-0" TRUSS SPAN SHALL BE CAREFULLY REMOVED AND SHALL BECOME THE PROPERTY OF THE HIGHWAY DEPARTMENT.

REMOVAL OR ADJUSTMENT OF PUBLIC UTILITIES WHERE NECESSARY SHALL NOT BE AT CONTRACTOR'S EXPENSE.

DETAILS OF OLD BRIDGE NO. 1508, DRAWING NOS. 3119, 3120 AND 2413 WILL BE FURNISHED TO CONTRACTOR ON REQUEST.

## GENERAL NOTES

ALL CONCRETE TO BE CLASS S AND TO BE POURED IN THE DRY. ALL EXPOSED CORNERS SHALL BE CHAMFERED 3/4" UNLESS OTHERWISE NOTED.

ALL FILING PILES TO BE 16" OCTAGONAL PRECAST CONCRETE PILES AND SHALL BE DRIVEN WITH MOVED AIR, STEAM, OR DIESEL HAMMER TO A MINIMUM BEARING CAPACITY OF 4 TONS PER PILE, AND TO A MINIMUM PENETRATION OF 20 FEET BELOW ORIGINAL GROUND LINE OR SUBGRADE. LENGTHS OF PILE SHOWN ARE FOR ESTIMATING QUANTITIES ONLY. ACTUAL LENGTHS TO BE DETERMINED IN THE FIELD. DRIVE ONE 50' TEST PILE EACH IN BENTS NO. 2 AND NO. 4. THESE TWO PILES ARE TO BE TEST LOADED. PILES IN END BENTS TO BE DRIVEN AFTER EMBANKMENT TO SUBGRADE IS IN PLACE.

FOR DETAILS OF BENT NOS. 1 AND 4, SEE DRWG. NO. 16356-A.  
FOR DETAILS OF BENT NOS. 2 AND 3, SEE DRWG. NO. 16356-B.  
FOR DETAILS OF 132'-0" CONT. R.C. SLAB UNIT, SEE DRWG. NOS. 16357-A

SPECIFICATIONS: ARKANSAS STATE HIGHWAY COMMISSION STANDARD SPECIFICATIONS FOR HIGHWAY CONSTRUCTION, EDITION OF 1959, THE 1966 SUPPLEMENTAL SPECIFICATIONS THERETO, AND APPLICABLE SPECIAL PROVISIONS.

DESIGN SPECIFICATIONS: AASHO 1969

DESIGN LIVE LOAD: HS20  
UNIT STRESSES: CLASS S CONCRETE (N=10) 1,200 PSI  
REINFORCING STEEL 20,000 PSI

NOTE:  
CONTRACTOR TO REMOVE PORTIONS OF EXISTING EMBANKMENT TO ELEVATION 268.0 UNDER NEW BRIDGE AND TRIM SIDES OF DITCH TO 2:1 SLOPES FOR DISTANCE OF 100' UPSTREAM AND DOWNSTREAM APPROXIMATELY 2500 CU. YDS. WITH RIPRAP THE BOTTOM WIDTH SHALL BE 69.0' AND WITHOUT RIPRAP 60' WITH 2:1 SLOPES.

THREE OLD CONCRETE FOUNDATIONS TO BE REMOVED FROM CHANNEL, ALSO ORIGINAL FALSE WORK PILING TO BE REMOVED TO ELEVATION 255.0 OR BELOW.

EXISTING ABUTMENTS TO BE CUT DOWN TO NOT LESS THAN 2'-0" BELOW TOP OF RIPRAP SLOPES.

## LAYOUT OF BRIDGE OVER EIGHT MILE DITCH PARAGOULD EAST BRIDGE GREEN COUNTY

ROUTE 25 SEC. 9

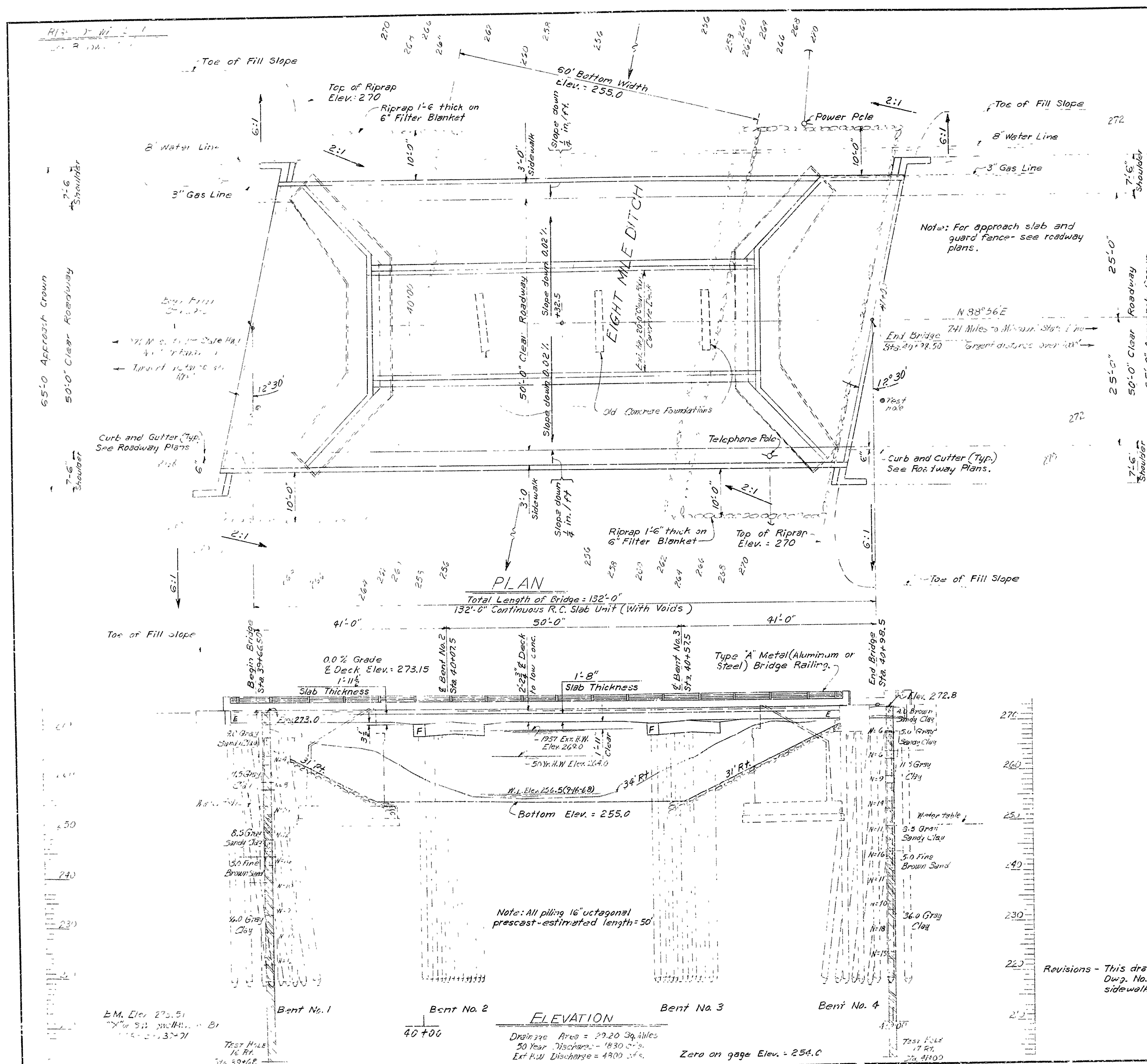
ARKANSAS STATE HIGHWAY COMMISSION  
LITTLE ROCK, ARK.

DRAWN BY: T.L.L. DATE: 5-2-70  
TRACED BY: L.D.F. DATE: 6-22-70  
CHECKED BY: L.D.F. DATE: 7-2-70

BRIDGE NO. 5266 DRAWING NO. 16355

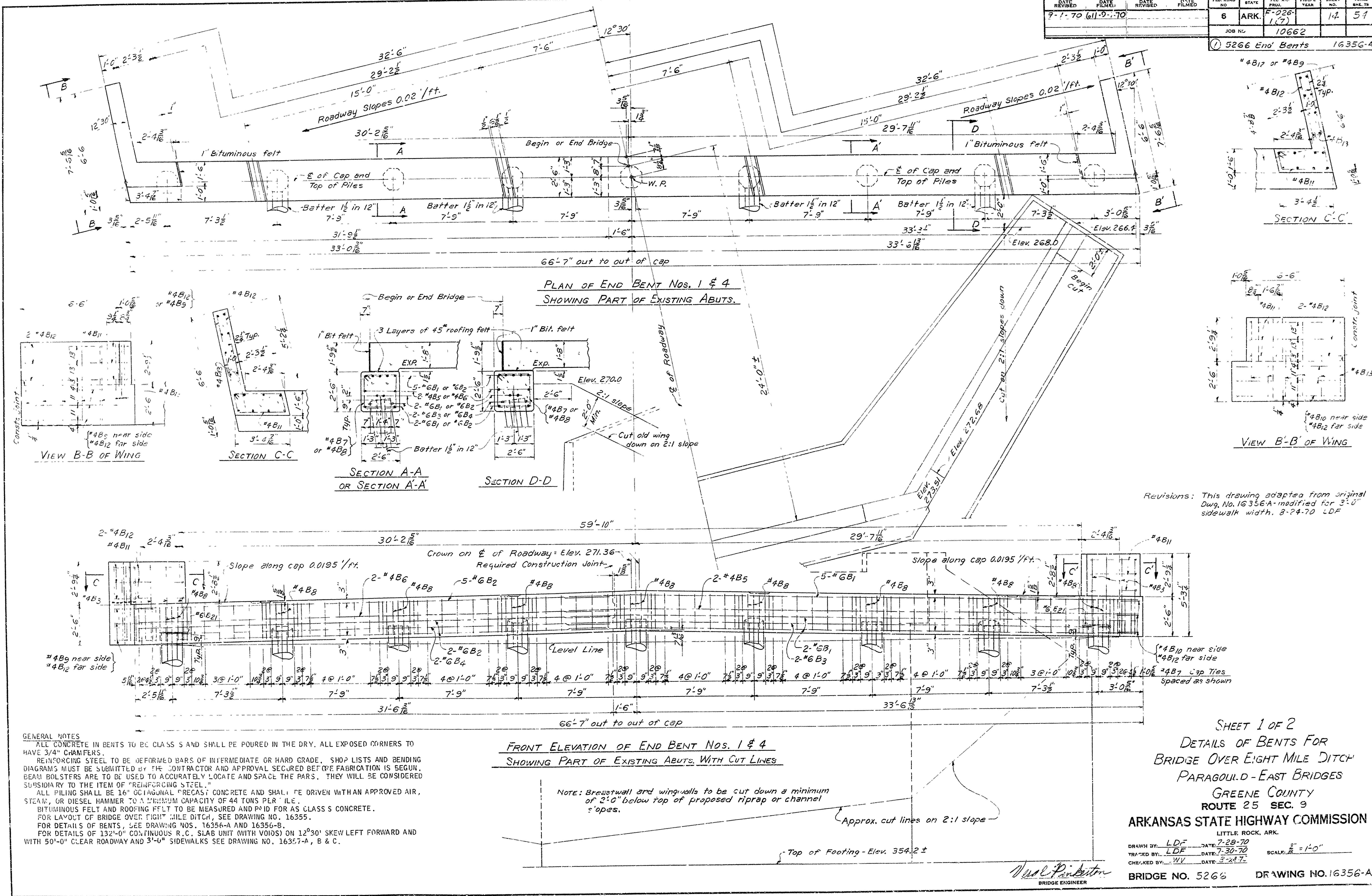
BRIDGE ENGINEER

Revisions - This drawing adapted from original  
Dwg. No. 16355 - modified for 3'-0"  
sidewalk width, 5-27-70 LDF





DATE REVISED	DATE FILMED	DATE REVISED	DATE FILMED	FED. ROAD NO.	STATE	FISC. AID PROJ. NO.	FISCAL YEAR	SHEET NO.	TOTAL SHEETS
7-1-70	6-11-70			6	ARK.	2-226-1(7)		14	54
				JOB NO.		10662		5266 End Bents	
								16356-A	



SHEET 1 OF 2

DETAILS OF BENTS FOR

BRIDGE OVER EIGHT MILE DITCH

PARAGOULD - EAST BRIDGES

GREENE COUNTY

ROUTE 25 SEC. 9

ARKANSAS STATE HIGHWAY COMMISSION

LITTLE ROCK, ARK.

DRAWN BY: LDF DATE: 7-28-70

TRACED BY: LDF DATE: 7-30-70

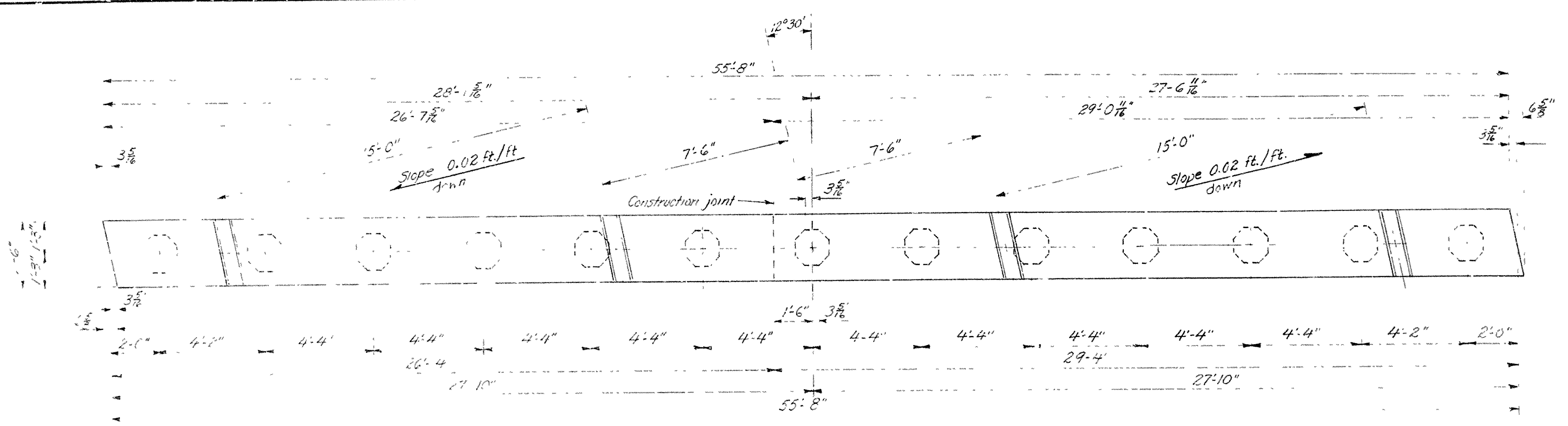
CHECKED BY: WV DATE: 8-24-70

SCALE: 1" = 1'-0"

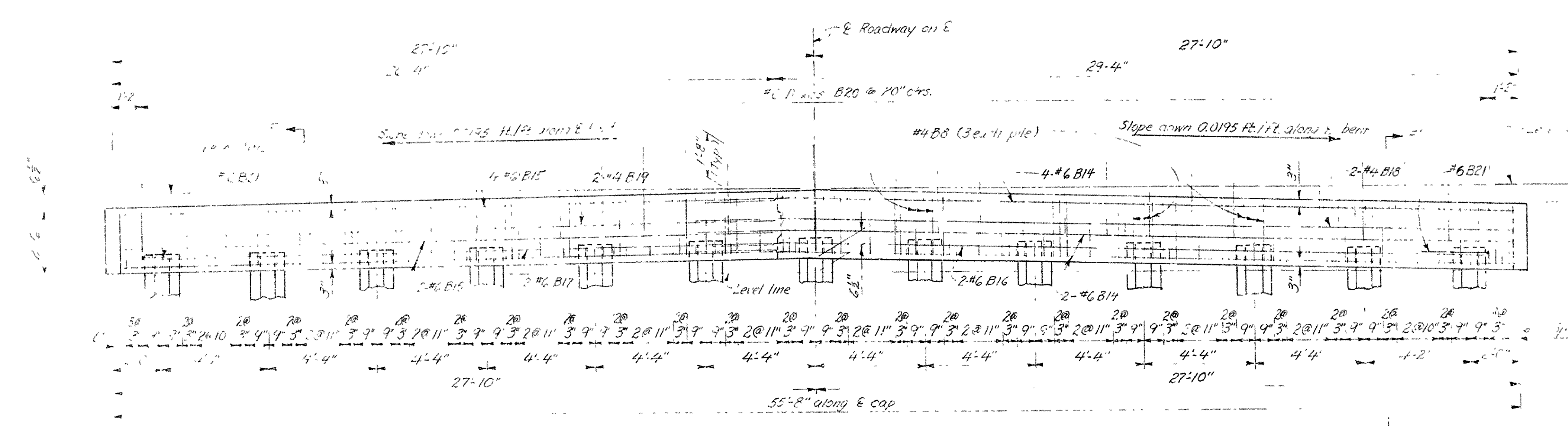
BRIDGE NO. 5266 DRAWING NO. 16356-A



DATE REVISED	DATE FILMED	DATE REVISED	DATE FILMED	FED. ROAD NO.	STATE	FED. AID FUND.	FISCAL YEAR	SHEET NO.	TOTAL SHEETS
9-1-70	6-12-9-170			6	ARK.	5-0-0- -1-1-71		15	54
				JOB NO		10662			
				3-5-66 INT. BENTS		16-1-2			



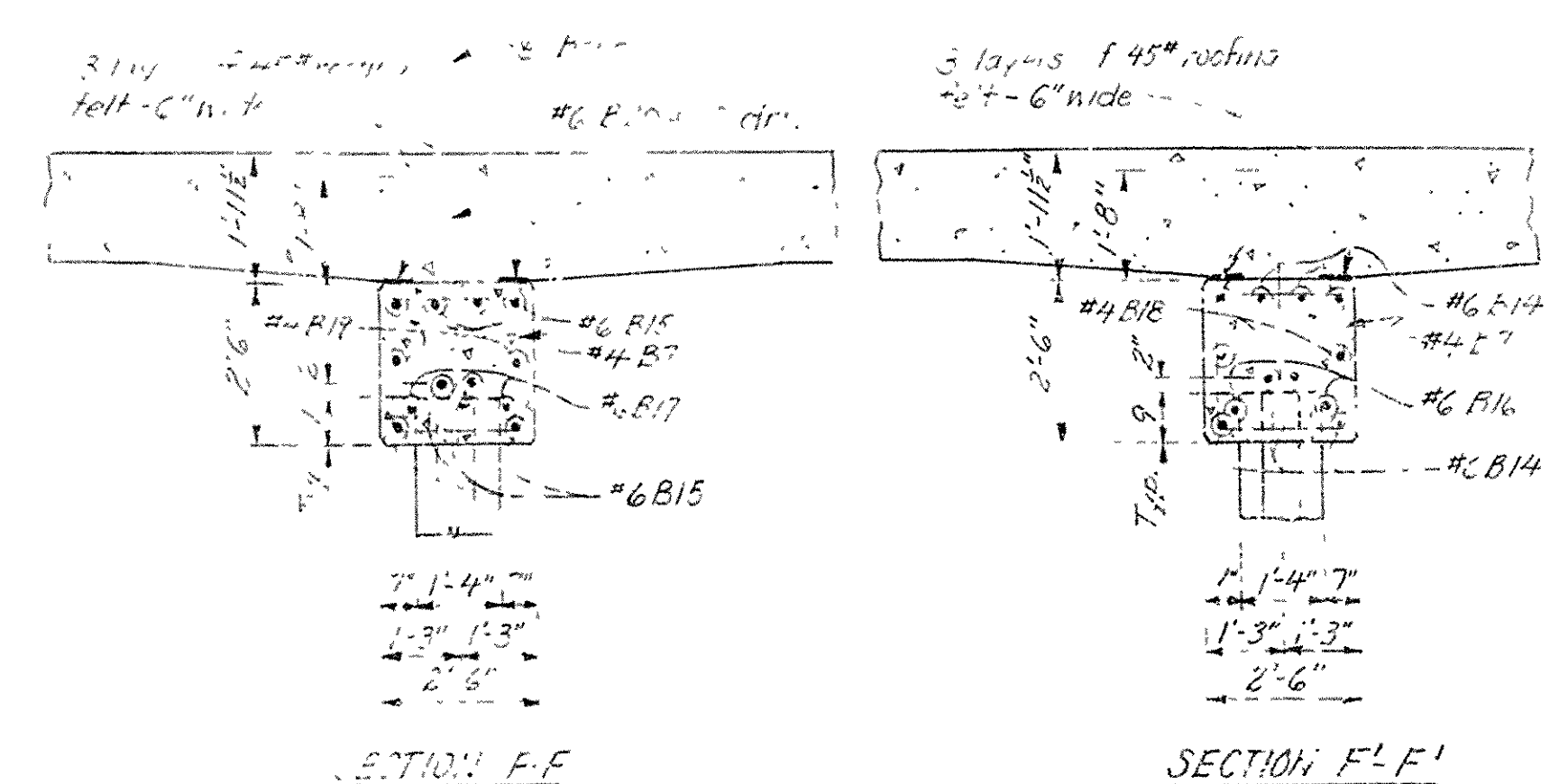
PLAN OF INTERMEDIATE BENTS NOS. 2 & 3



ELEVATION OF INTERMEDIATE BENTS NOS. 2 & 3

MARK	SIZE	NO. REIN.	PER BENT	LENGTH	END	INT.	PENDING DIAGRAM
B1	#6	9	-	37'-11"	27		
B2	#6	9	-	30'-10"	Straight		
B3	#6	2	-	35'-10"	Straight		
B4	#6	2	-	29'-3"	Straight		
B5	#4	2	-	37'-2"	Straight		
B6	#4	2	-	33'-10"	Straight		
B7	#4	2	92	7'-1"	4"		
B8	#4	27	31	16'-5"			
B9	#4	3		8'-7"			
B10	#4	3		25'-11"			
B11	#4	6		3'-11"			
B12	#4	18		21'-3"	Straight		
B13	#4	32		4'-10"	Straight		
B14	#6	8		32'-4"			
B15	#6	3		25'-8"	Straight		
B16	#6	2		21'-1"	Straight		
B17	#6	2		24'-7"	Straight		
B18	#4	2		31'-8"	Straight		
B19	#4	2		25'-4"	Straight		
B20	#6	33		3'-4"	Straight		
B21	#6	2	2	6'-6"			

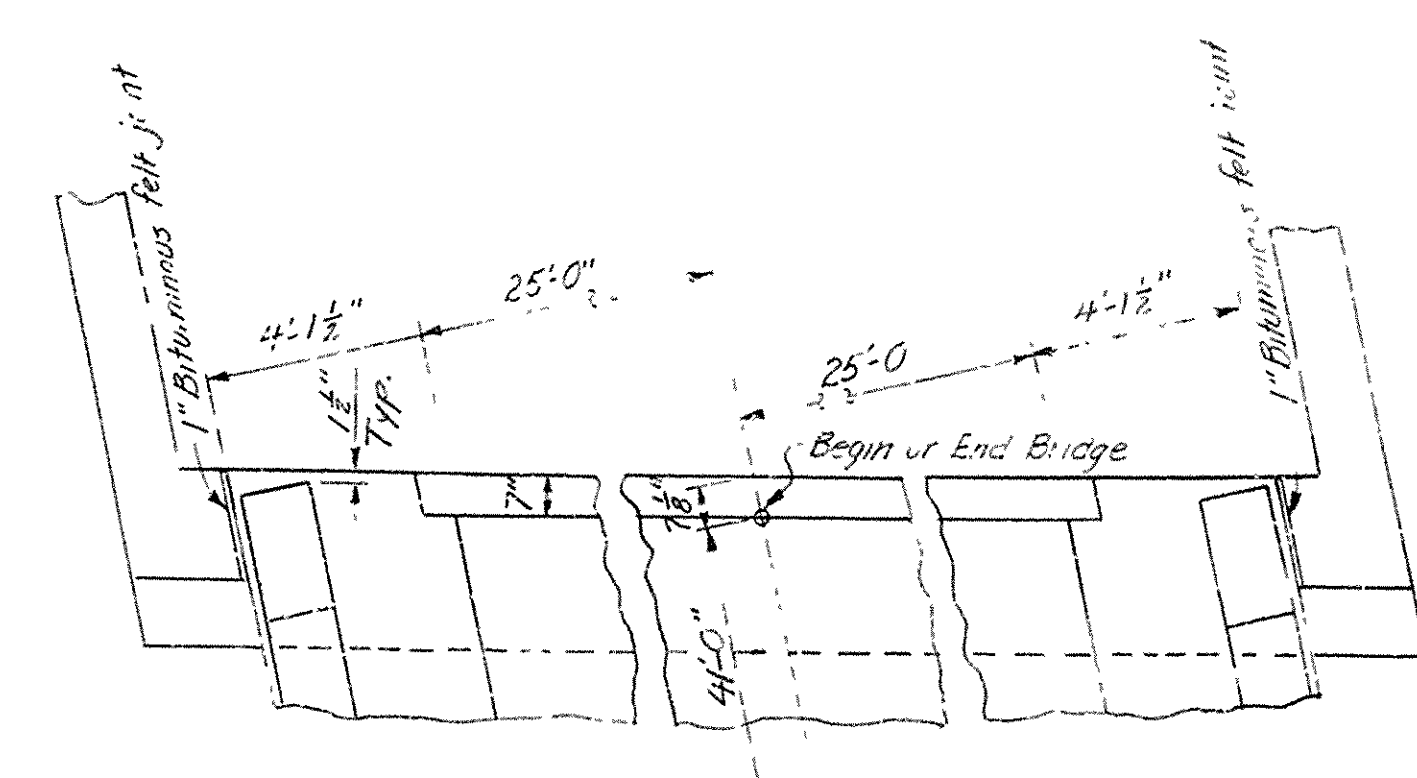
Note: Dimensions are to face of bents.



SECTION F-F

SECTION F'-F'

DETAILS OF CONSTRUCTION JOINT



DETAILS AT BRIDGE ENDS

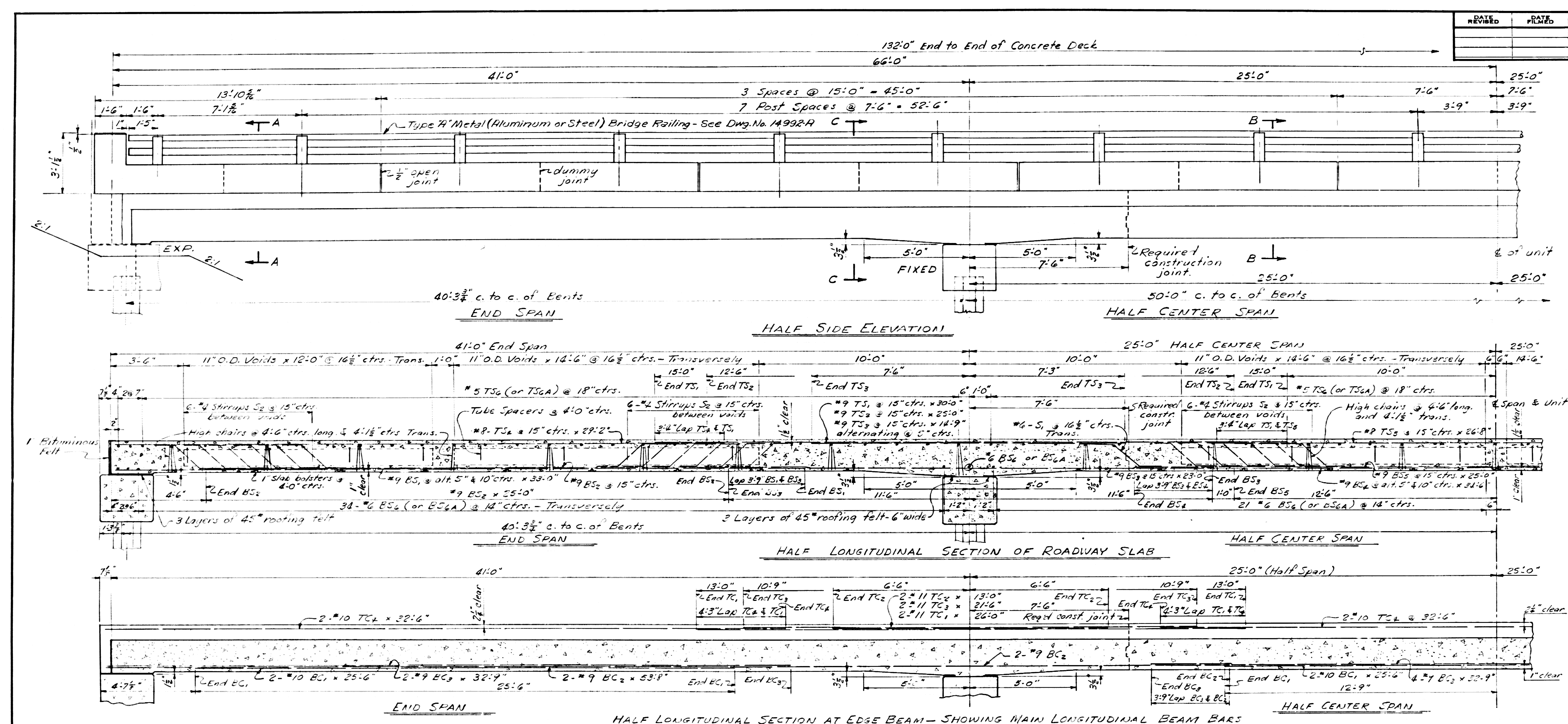
Note: For general notes see drawings under 10356-A. This drawing adapted from original drawing number 10356-B.

SHEET 2 OF 2  
DETAILS OF BENTS  
BRIDGE OVER EIGHT MILE DITCH  
PARAGOULD - EAST BRIDGES  
GREENE COUNTY  
ROUTE 25 SEC. 9  
ARKANSAS STATE HIGHWAY COMMISSION  
LITTLE ROCK, ARK.

DRAWN BY: LUF DATE: 8-18-70  
TRACED BY: TGL DATE: 8-18-70  
CHECKED BY: JGL DATE: 8-28-70  
BRIDGE NO. 5266 DRAWING NO. 5340 E

Dual Pontoon  
BRIDGE ENGINEER

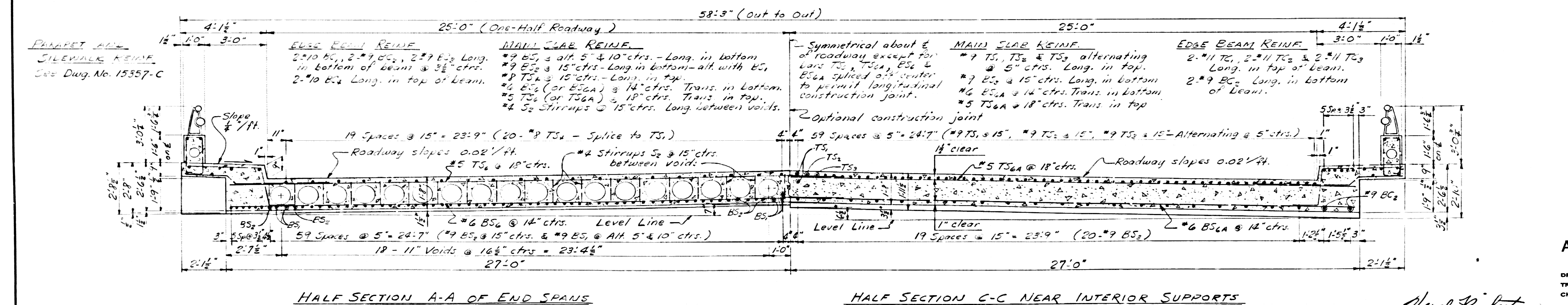




DATE REVISED	DATE FILMED	DATE REVISED	DATE FILMED	FED. ROAD PROJ.	STATE	FED. AID PROJ.	FISCAL YEAR	SHEET NO.	TOTAL SHEETS
				6	ARK.	F020-17(3)	1966	16	54

5266 CONT. SLAB UNIT 16357-A

MARK	SIZE	NO.	LENGTH	FIN. DIAM.	BENDING DIAGRAM
BC <sub>1</sub>	#10	12	25'0"		
BC <sub>2</sub>	#9	8	53'8"		
BC <sub>3</sub>	#7	16	32'9"		
TC <sub>1</sub>	#11	8	24'0"		
TC <sub>2</sub>	#11	8	13'0"		
TC <sub>3</sub>	#11	8	21'6"		
TC <sub>4</sub>	#10	12	32'6"		
BS <sub>1</sub>	#9	164	55'0"		
BS <sub>2</sub>	#9	80	25'0"		
BS <sub>3</sub>	#9	80	25'0"		
BS <sub>4</sub>	#9	32	34'6"		
BS <sub>5</sub>	#9	40	25'0"		
BS <sub>6</sub>	#6	116	32'6"		
BS <sub>7</sub>	#6	116	27'0"		
TS <sub>1</sub>	#9	84	30'0"		
TS <sub>2</sub>	#9	90	25'0"		
TS <sub>3</sub>	#9	80	14'9"		
TS <sub>4</sub>	#9	80	29'2"		
TS <sub>5</sub>	#8	40	24'8"		
TS <sub>6</sub>	#5	91	30'0"		
S <sub>1</sub>	#6	76	4'10"		
S <sub>2</sub>	#4	1246	4'0"		
S <sub>3</sub>	#4	354	7'4"		
S <sub>4</sub>	#4	176	7'0"		
S <sub>5</sub>	#4	40	34'6"		
S <sub>6</sub>	#4	312	6'0"		
S <sub>7</sub>	#4	28	14'8"		
S <sub>8</sub>	#4	24	13'4"		
S <sub>9</sub>	#4	34	3'4"		
TD <sub>1</sub>	#6	12	7'0"		
TD <sub>2</sub>	#6	9	4'5"		
TD <sub>3</sub>	#4	16	4'7"		



SHEET NO. 1 OF 3  
 DETAILS OF 132'0" CONT. R.C. SLAB UNIT  
 (WITH VOIDS) 12°30' SKEW LEFT FORWARD  
 50'0" CLEAR ROADWAY 3'0" SIDEWALKS  
 BRIDGE OVER EIGHT MILE DITCH  
 PARAGOULD - EAST BRIDGES  
 GREENE COUNTY  
 ROUTE 25 SEC. 3  
 ARKANSAS STATE HIGHWAY COMMISSION  
 LITTLE ROCK, ARK.  
 DRAWN BY: DV DATE: 8-21-70  
 CHECKED BY: JVV DATE: 8-24-70  
 BRIDGE NO. 5266 DRAWING NO. 16357-A