



Latitude:36.01097, Longitude:-90.53112

Route:49 Section:02 Log:20.39

Arnold Road ID:28x49x2xA, Arnold Log mile:20.376

District 10, Greene County

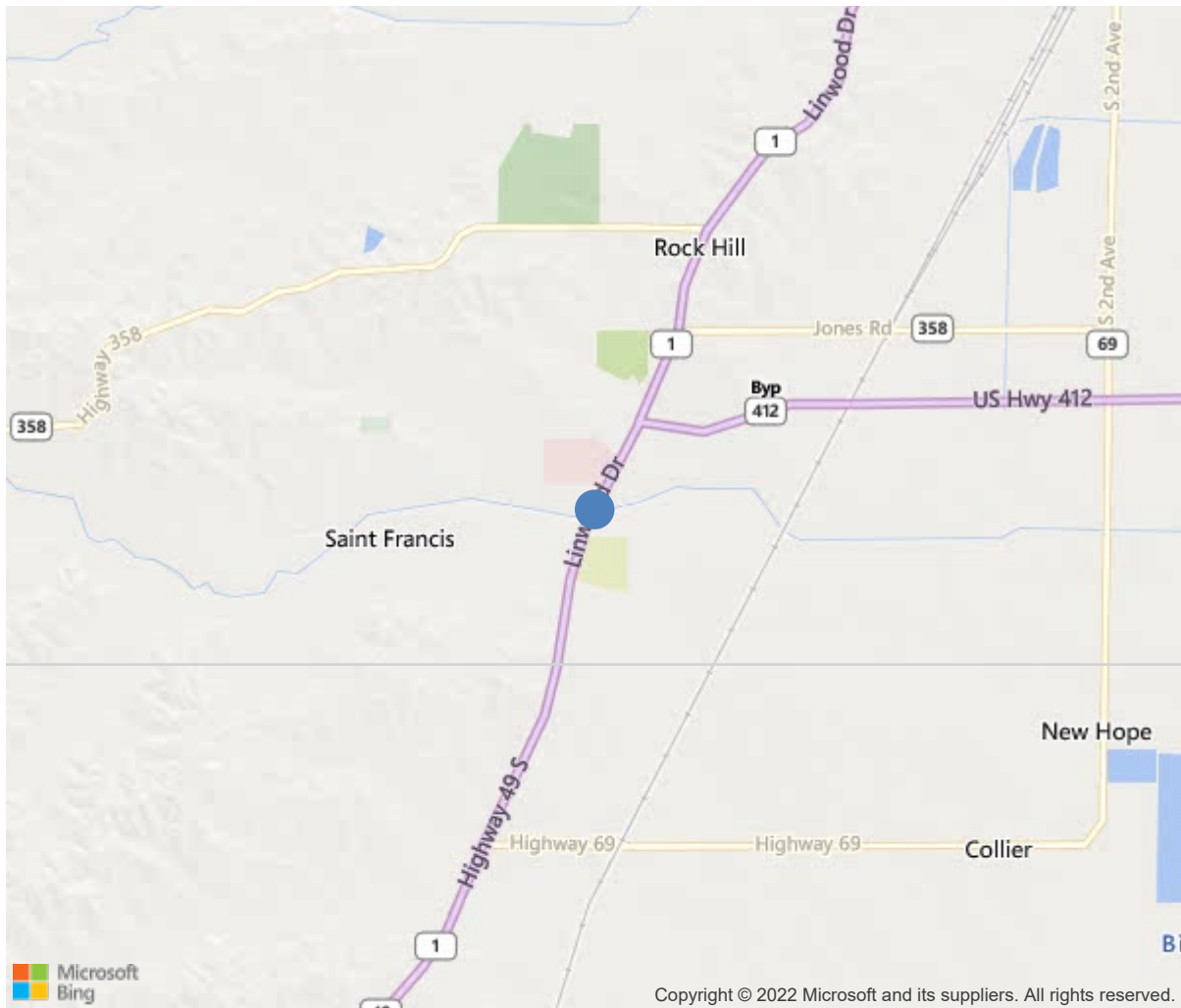
Owner: 1-State Highway Agency



Bridge #06501 (Routine)
US 49-02- LM 20.39 over VILLAGE CREEK
Location: 3.61 M N OF CRAIGHEAD CO

Team Lead: Tim Myrick **Inspection Date:** August 16, 2021

3.61 M N OF CRAIGHEAD CO



36.01097, -90.53112



Bridge #06501 (Routine)
US 49-02- LM 20.39 over VILLAGE CREEK
Location: 3.61 M N OF CRAIGHEAD CO

Team Lead: Tim Myrick Inspection Date: August 16, 2021

| IDENTIFICATION | |
|---|--|
| (1) State Names | Arkansas |
| (8) Structure Number | 06501 |
| (5) Inventory Route | 49 |
| (2) Highway Agency District | 10 |
| (3) County Code | 55-Greene County, Arkansas |
| (4) Place Code | 0 |
| (6) Features Intersected | VILLAGE CREEK |
| (7) Facility Carried | US 49-02- LM 20.39 |
| (9) Location | 3.61 M N OF CRAIGHEAD CO |
| (11) Mile Point | 20.39 mi |
| (12) Base Highway Network | Yes |
| (13) LRS Inventory Rte & Subrte | 0000049020 |
| (16) Latitude | 36.01097 |
| (17) Longitude | -90.53112 |
| (98) Border Bridge State Code | |
| (99) Border Bridge Structure No. | |
| STRUCTURE TYPE AND MATERIAL | |
| (43) Main Structure Type | 42 |
| Material | 4-Steel continuous |
| Type | 2-Stringer/Multi-beam or girder |
| (44) Approach Structure Type | 00 |
| Material | 0-Other |
| Type | 0-Other |
| (45) No. of Spans in Main Unit | 3 |
| (46) No. of Approach Spans | 0 |
| (107) Deck Structure Type | 1-Concrete Cast-in-Place |
| (108) Wearing Surface/Protective System | |
| Type of Wearing Surface | 1-Monolithic Concrete (concurrently placed |
| Type of Membrane | 0-None |
| Type of Deck Protection | 0-None |
| AGE AND SERVICE | |
| (27) Year Built | 1995 |
| (106) Year Reconstructed | 0 |
| (42) Type of Service | 15 |
| On | 1-Highway |
| Under | 5-Waterway |
| (28) Lane | |
| On | 4 |
| Under | 0 |
| (29) Average Daily Traffic | 22000 |
| (30) Year of ADT | 2018 |
| (109) Truck ADT | 5 % |
| (19) Bypass, Detour Length | 6 mi |
| GEOMETRIC DATA | |
| (48) Length of Maximum Span | 64 ft |
| (49) Structure Length | 165 ft |
| (50) Curb or Sidewalk Width | |
| Left | 0 ft |
| Right | 0 ft |
| (51) Bridge Roadway Width Curb to Curb | 69.9 ft |
| (52) Deck Width Out to Out | 72.8 ft |
| (32) Approach Roadway Width (W/Shoulders) | 69.9 ft |
| (33) Bridge Median | 0-No median |
| (34) Skew | 45 Deg |
| (35) Structure Flared | No flare |
| (10) Inventory Route Min Vert Clear | 99.99 ft |
| (47) Inventory Route Total Horiz Clear | 71.2 ft |
| (53) Min Vert Clear Over Bridge Rdwy | 99.99 ft |
| (54) Min Vert Underclear | 0 ft |
| Ref: | |
| (55) Min Lat Underclear RT | 99.9 ft |
| Ref: | |
| (56) Min Lat Underclear LT | 0 ft |
| NAVIGATION DATA | |
| (38) Navigation Control | 0-No navigation control on water |
| (111) Pier Protection | 5-None present but re-evaluation |
| (39) Navigation Vertical Clearance | 0 ft |
| (116) Vert-Lift Bridge Nav Min Vert Clear | 0 ft |
| (40) Navigation Horizontal Clearance | 0 ft |

| CLASSIFICATION | |
|--|--|
| (112) NBIS Bridge Length | Y |
| (104) Highway System | 1 |
| (26) Functional Class | 14-Urban Other Principal Arterial |
| (100) Defense Highway | 0-The inventory route is not a S |
| (101) Parallel Structure | N-No parallel structure exists. |
| (102) Direction of Traffic | 2 - way traffic |
| (103) Temporary Structure | |
| (105) Federal Lands Highways | 0-N/A |
| (110) Designated National Network | 1-The inventory route is part of the |
| (20) Toll | 3-On free road. The structure is toll- |
| (21) Maintain | 1-State Highway Agency |
| (22) Owner | 1-State Highway Agency |
| (37) Historical Significance | 5-Bridge is not eligible for the NRHP |
| CONDITION | |
| (58) Deck | 7 |
| (59) Superstructure | 7 |
| (60) Substructure | 7 |
| (61) Channel & Channel Protection | 6 |
| (62) Culverts | N |
| LOAD RATING AND POSTING | |
| (31) Design Load | 5-MS 18 / HS 20 |
| (63) Operating Rating Method | 1 |
| (64) Operating Rating | |
| Type | 1-Load Factor(LF) |
| Rating | 60 |
| (65) Inventory Rating Method | 1-Load Factor(LF) |
| (66) Inventory Rating | |
| Type | 3 |
| Rating | 36 |
| (70) Bridge Posting | 5-Equal to or above legal loads |
| (41) Structure Open/Posted/Closed | A-Open, no restriction |
| APPRAISAL | |
| (67) Structural Evaluation | 7 |
| (68) Deck Geometry | 9 |
| (69) Clearances, Vertical/Horizontal | N |
| (71) Waterway Adequacy | 9 |
| (72) Approach Roadway Alignment | 8 |
| (36A) Bridge Railings | 1-Inspected feature meets currently a |
| (36B) Transitions | 0-Inspected feature does not meet cur |
| (36C) Approach Guardrail | 0-Inspected feature does not meet cur |
| (36D) Approach Guardrail Ends | 1-Inspected feature meets currently a |
| (113) Scour Critical Bridges | 5-Bridge foundations determined to be |
| PROPOSED IMPROVEMENTS | |
| (75) Type of Work | |
| (76) Length of Structure Improvement | 0 ft |
| (94) Bridge Improvement Cost | \$ 0 |
| (95) Roadway Improvement Cost | \$ 0 |
| (96) Total Project Cost | \$ 0 |
| (97) Year of Improvement Cost Estimate | |
| (114) Future ADT | 28400 |
| (115) Year of Future ADT | 2038 |

| INSPECTIONS * | | | |
|--|-----------|-------------|------|
| (90) Inspection Date | 08/2021 | | |
| (91) Frequency | 24 Months | | |
| (92) Critical Feature Inspection | Done | Freq. (Mon) | Date |
| A: Fracture Critical Detail | No | | |
| B: Underwater Inspection | No | | |
| C: Other Special Inspection | No | | |
| * The inspection date and frequency information in this box contains the current NBI date and frequency information. Please refer to the report header for the date this inspection was conducted. | | | |



Bridge #06501 (Routine)
US 49-02- LM 20.39 over VILLAGE CREEK
Location: 3.61 M N OF CRAIGHEAD CO

Team Lead: Tim Myrick, **Inspection Date:** August 16, 2021

| ELEM | DESCRIPTION | UNITS | TOTAL | CS1 | CS2 | CS3 | CS4 |
|------|---|-------|-------|-------|------|-----|-----|
| 12 | Reinforced Concrete Deck | SF | 12028 | 10665 | 1363 | 0 | 0 |
| 1120 | Efflorescence/Rust Staining | SF | 24 | 0 | 24 | 0 | 0 |
| 1130 | Cracking (RC and Other) | SF | 1339 | 0 | 1339 | 0 | 0 |
| 107 | Steel Open Girder/Beam | LF | 1620 | 1455 | 165 | 0 | 0 |
| 1000 | Corrosion | LF | 165 | 0 | 165 | 0 | 0 |
| 515 | Steel Protective Coating | SF | 15462 | 15109 | 0 | 270 | 83 |
| 3430 | Oxide Film Degradation Color/Texture Adherence(Steel Protective Coatings) | SF | 353 | 0 | 0 | 270 | 83 |
| 215 | Reinforced Concrete Abutment | LF | 254 | 234 | 20 | 0 | 0 |
| 1130 | Cracking (RC and Other) | LF | 20 | 0 | 20 | 0 | 0 |
| 225 | Steel Pile | EA | 16 | 0 | 16 | 0 | 0 |
| 1000 | Corrosion | EA | 16 | 0 | 16 | 0 | 0 |
| 234 | Reinforced Concrete Pier Cap | LF | 207 | 207 | 0 | 0 | 0 |
| 302 | Compression Joint Seal | LF | 198 | 119 | 0 | 0 | 79 |
| 2320 | Seal Adhesion | LF | 79 | 0 | 0 | 0 | 79 |
| 310 | Elastomeric Bearing | EA | 40 | 40 | 0 | 0 | 0 |
| 321 | Reinforced Concrete Approach Slab | SF | 3942 | 3333 | 0 | 609 | 0 |
| 1080 | Delamination/Spall/Patched Area | SF | 11 | 0 | 0 | 11 | 0 |
| 1130 | Cracking (RC and Other) | SF | 598 | 0 | 0 | 598 | 0 |
| 331 | Reinforced Concrete Bridge Railing | LF | 330 | 330 | 0 | 0 | 0 |



Bridge #06501 (Routine)
US 49-02- LM 20.39 over VILLAGE CREEK
Location: 3.61 M N OF CRAIGHEAD CO

Team Lead: Tim Myrick Inspection Date: August 16, 2021















Bridge #06501 (Routine)
US 49-02- LM 20.39 over VILLAGE CREEK
Location: 3.61 M N OF CRAIGHEAD CO

Team Lead: Tim Myrick **Inspection Date:** August 16, 2021

Maintenance Needs

Date Reported: 08/15/2011
Priority: G - General/ Preventive maintenance
Type of Work: Repair
Status: Monitor
Component: Substructure

Deficiency Description

Steel piles at bents 2 and 3 have minor rust at bottom of cap.

Remarks



Bridge #06501 (Routine)
US 49-02- LM 20.39 over VILLAGE CREEK
Location: 3.61 M N OF CRAIGHEAD CO

Team Lead: Tim Myrick **Inspection Date:** August 16, 2021

Date Reported: 08/15/2011
Priority: C - Important
Type of Work: Repair
Status: Monitor
Component: Deck

Deficiency Description

Deck has several minor unsealed cracks.

Remarks



Bridge #06501 (Routine)
US 49-02- LM 20.39 over VILLAGE CREEK
Location: 3.61 M N OF CRAIGHEAD CO

Team Lead: Tim Myrick **Inspection Date:** August 16, 2021

Date Reported: 08/15/2011
Priority: C - Important
Type of Work: Repair
Status: Monitor
Component: Approach

Deficiency Description

Approach slabs have several wide unsealed cracks.

Approach slab on bent 1 end has a minor spall. Approach slab on bent 4 end has a 10 ft. by up to 1 in. wide crack with spalling.

Remarks

Date Reported: 08/15/2011
Priority: C - Important
Type of Work: Repair
Status: Monitor
Component: 302 - Compression Joint Seal

Deficiency Description

Compression seals at bents 1 and 4 are losing adhesion, and falling out of joint, steel armor plate is rusted with measurable section loss where joint has dropped.

Remarks





Bridge #06501 (Routine)
US 49-02- LM 20.39 over VILLAGE CREEK
Location: 3.61 M N OF CRAIGHEAD CO

Team Lead: Tim Myrick Inspection Date: August 16, 2021

Date Reported: 08/21/2019
Priority: D- Routine
Type of Work: Clean
Status: Monitor
Component: Channel

Deficiency Description

Trees & brush on channel banks. Several small trees growing against bridge.

Remarks



Bridge #06501 (Routine)
US 49-02- LM 20.39 over VILLAGE CREEK
Location: 3.61 M N OF CRAIGHEAD CO

Team Lead: Tim Myrick **Inspection Date:** August 16, 2021

Date Reported: 08/21/2019
Priority: C - Important
Type of Work: Repair
Status: Monitor
Component: Channel

Deficiency Description

5 ft. loss of pile penetration at bent 2 since 1997.

Remarks



Bridge #06501 (Routine)
US 49-02- LM 20.39 over VILLAGE CREEK
Location: 3.61 M N OF CRAIGHEAD CO

Team Lead: Tim Myrick Inspection Date: August 16, 2021

Deck Notes

Approach slabs have several wide unsealed cracks.
Approach slab on bent 1 end has a minor spall.
Approach slab on bent 4 end has a 10' by up to 1" wide crack with spalling .
Deck has several minor unsealed cracks.
Compression seals at bents 1 and 4 are losing adhesion, and falling out of joint.
Steel armor plates where seals have dropped are rusted with measurable section loss.

Superstructure Notes

Weathering steel girders over bents 1 and 4 have some hard scale and flaking rust forming on bearing plates, bottom flange and bottom 6 in. of web due to leakage from missing seals.

Substructure Notes

Steel piles at bents 2 and 3 have minor rust at bottom of cap.
Bent 4 abutment has 7' of minor cracks.
Trees & brush on channel banks.
Several small trees growing against bridge.