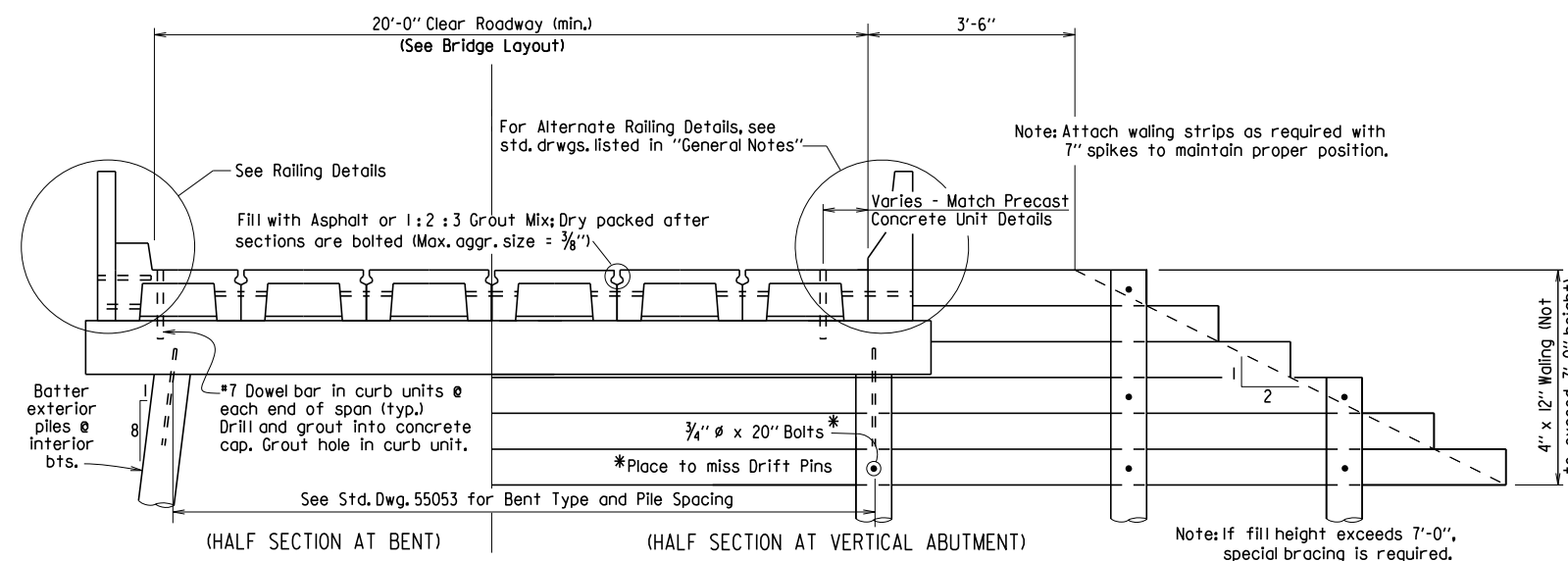
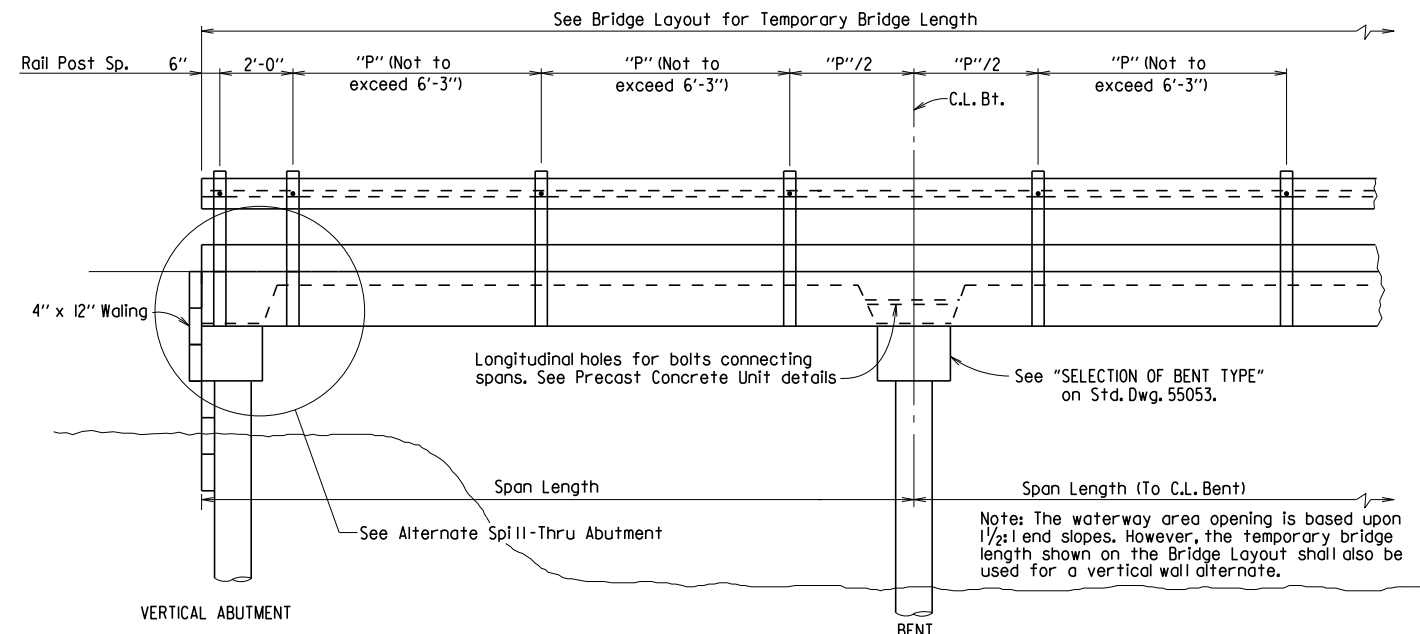


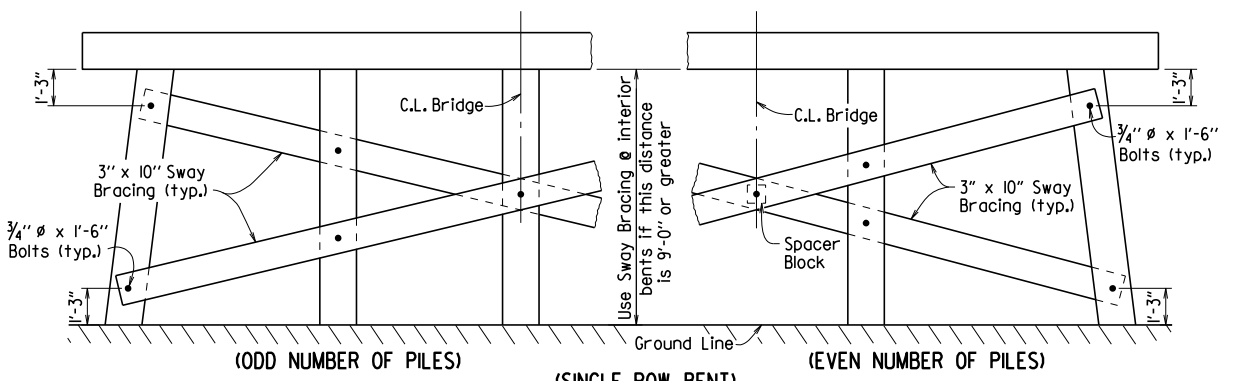
DATE REVISED	DATE FILMED	DATE REVISED	DATE FILMED	FED. ROAD DIST. NO.	STATE	FED. AID PROJ. NO.	SHEET NO.	TOTAL SHEETS
				6	ARK.			
							JOB NO.	
							TEMP. BRIDGE	55052



TYPICAL ROADWAY SECTION

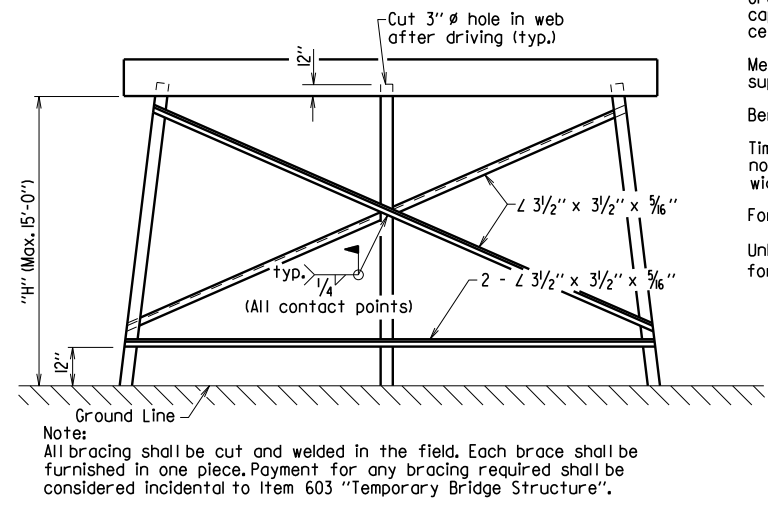
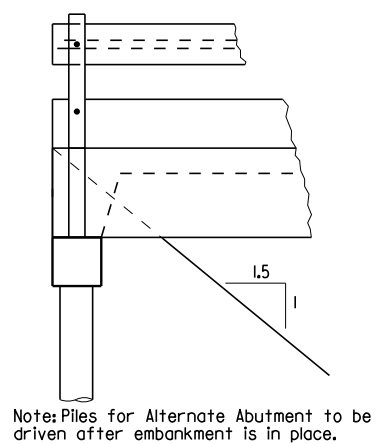
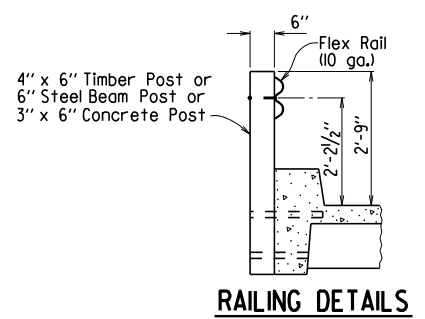


LONGITUDINAL SECTION



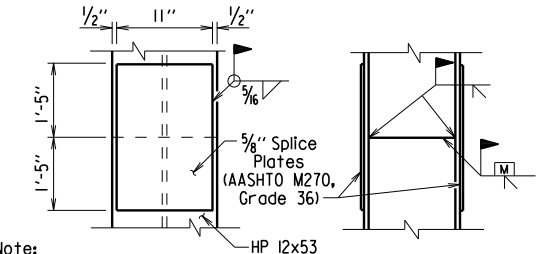
DETAILS OF SWAY BRACING FOR TIMBER PILES

Note: Sway Bracing, if required, shall be used on both lines of piles for Tower Bents.



DETAILS OF BRACING FOR STEEL PILES

Omit bottom bracing when "H" is less than 10'. Omit all bracing when "H" is less than 5'. When "H" exceeds 15', additional X-bracing is required to provide a maximum unbraced pile length of 14'.



PILE SPLICE DETAIL

Note: The Contractor may for his own convenience and at his own expense provide as many as three splices per pile for steel bearing piling. Minimum spacing between splices shall be 5 ft. A proprietary steel pile splicer sufficient to develop the full strength of the section may be substituted for the details shown. Pile splicers shall be installed in accordance with manufacturer's recommendations.

This document was originally issued and sealed by Carl J. Fuselier, PE No. 7510, on April 17, 2014. This copy is not a signed and sealed document.



BRIDGE ENGINEER

SHEET 1 OF 2

**STANDARD DETAILS FOR
TEMPORARY BRIDGE STRUCTURE
PRECAST CONCRETE SPANS
20' ROADWAY WIDTH**

ROUTE SEC.
ARKANSAS STATE HIGHWAY COMMISSION

LITTLE ROCK, ARK.

DRAWN BY: JYP DATE: 4-17-14 FILENAME: b55052.dgn
CHECKED BY: AMS DATE: 4-17-14 SCALE: No Scale
DESIGNED BY: STD. DATE: —

DRAWING NO. 55052