



Lorie Tudor, P.E.
Director

AAPA Partnering Meeting
January 6, 2022



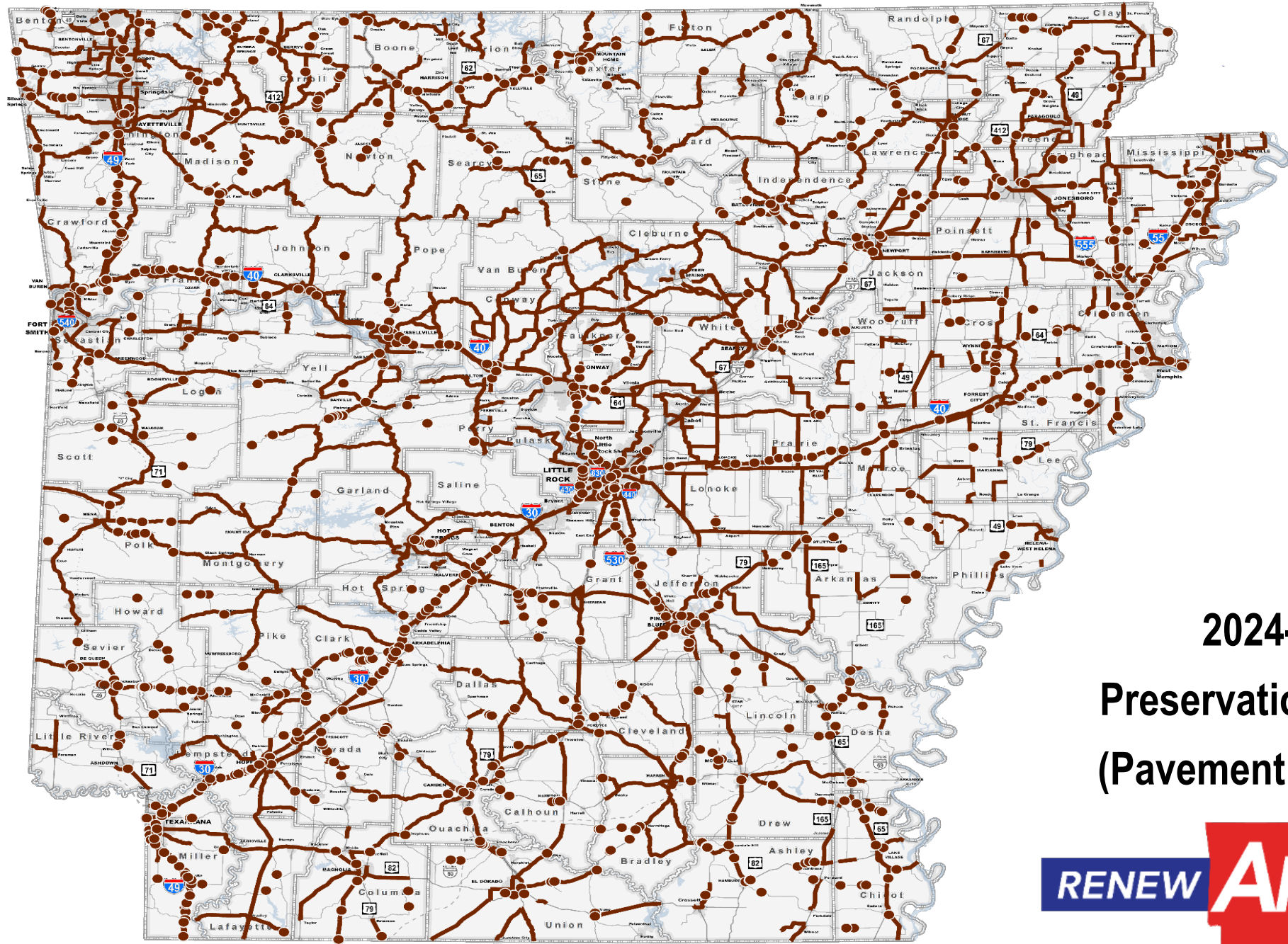


ISSUE 1

Every Arkansan Wins!

- Highways, Roads, and Bridges
- 70% (\$206 M) State Highways
- 15% (\$44 M) County Roads
- 15% (\$44 M) City Streets

**Draft Program of Pavement & Bridge Preservation
Projects**



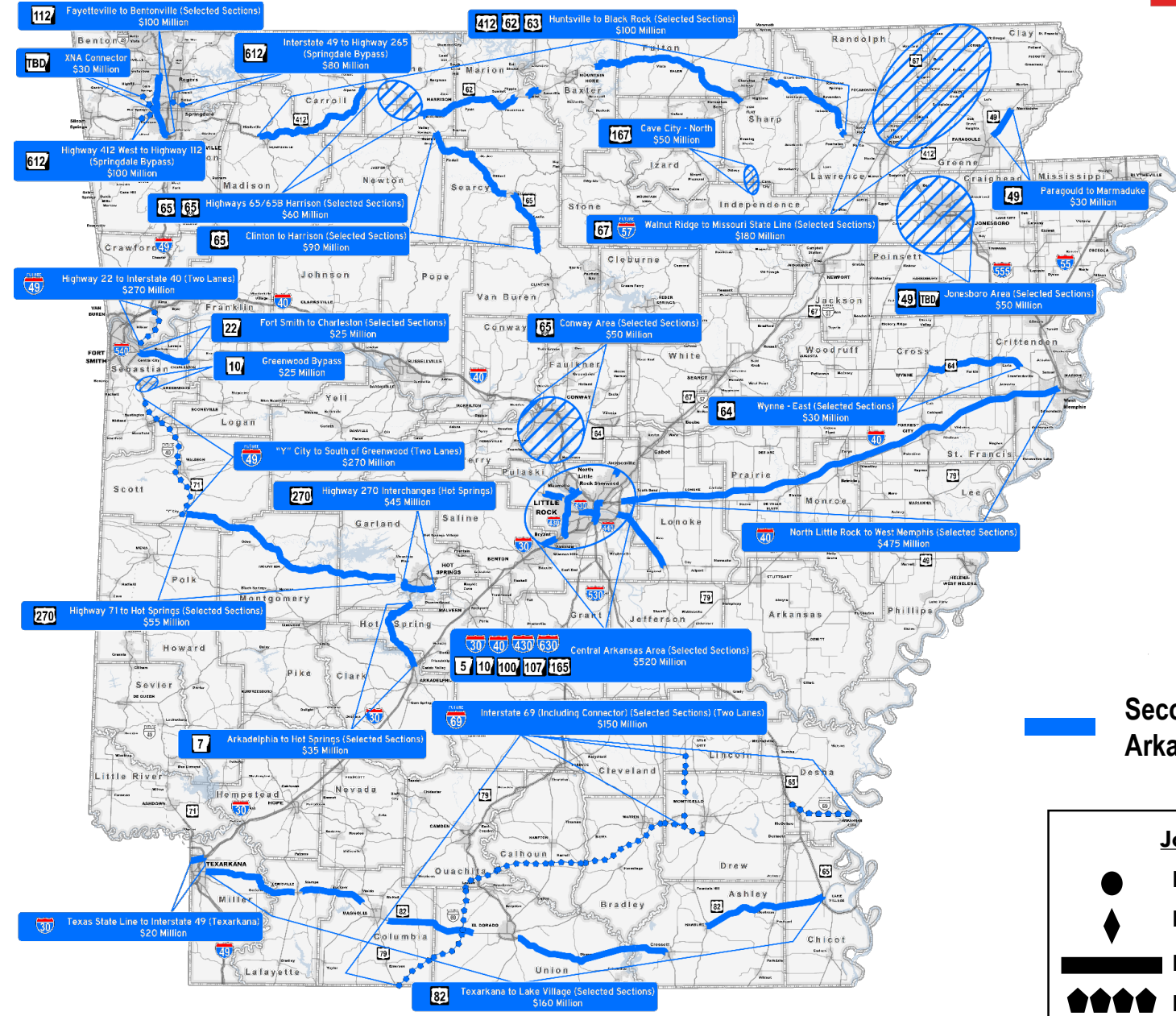
**2024-2033
Preservation Projects
(Pavement & Bridges)**



Second Connecting Arkansas Program



- Capital and Congestion Relief
- \$3.6 Billion - 20 years
- July 2023

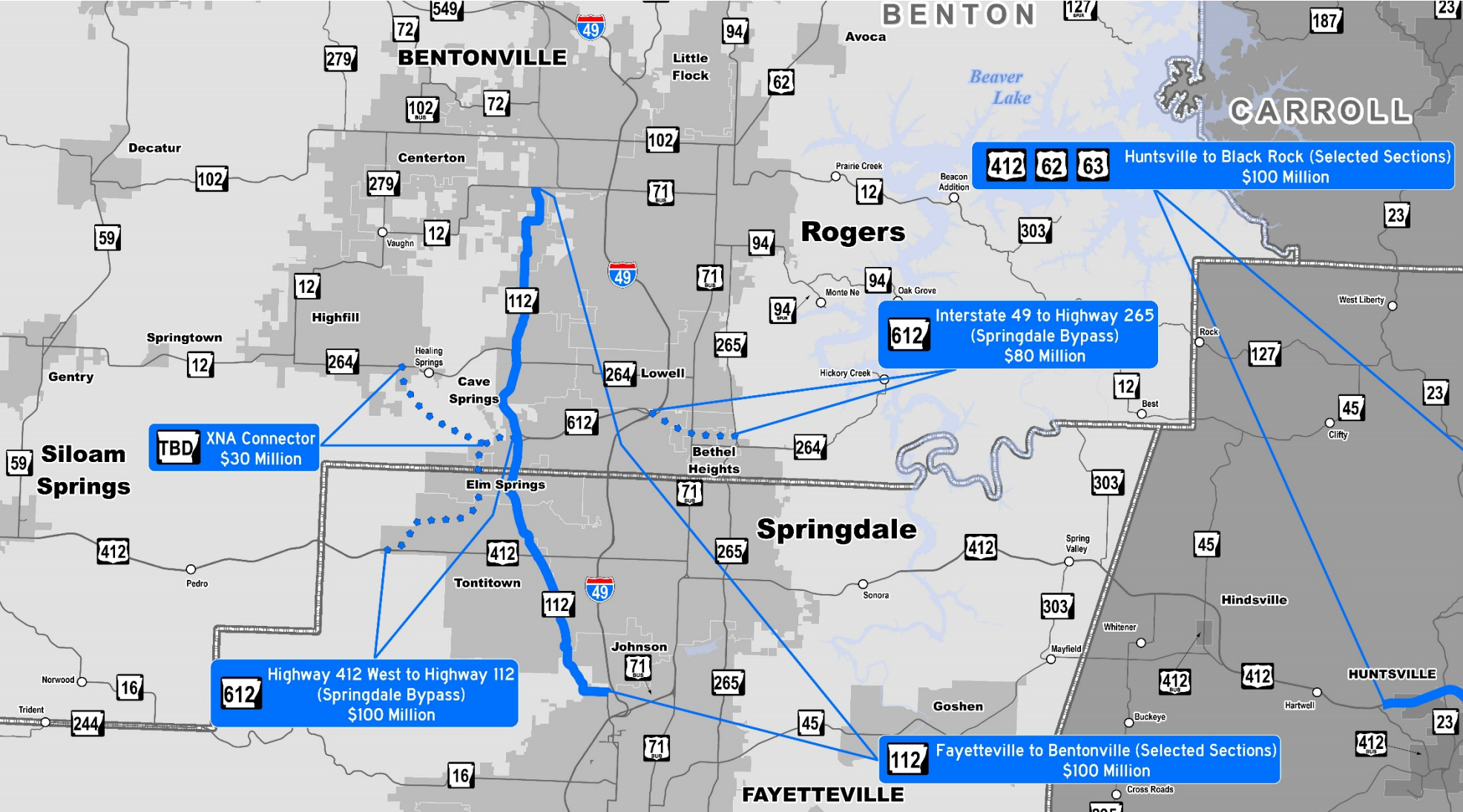


Second Connecting Arkansas Program

Job Type

- Bridge
- ◆ Interchange
- ▬ Roadway
- ◆◆◆◆ New Location


Second Connecting Arkansas Program



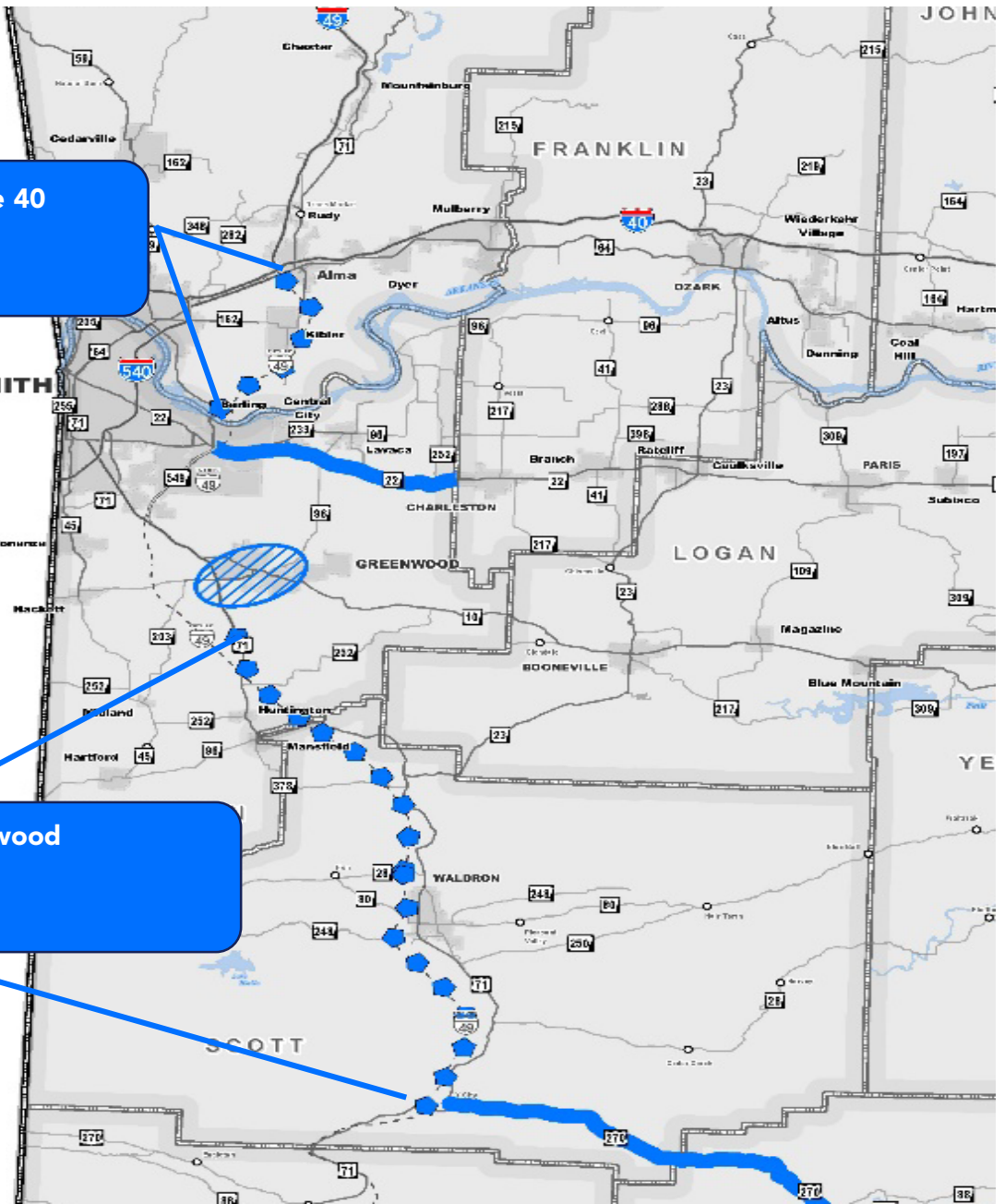
Second Connecting Arkansas Program

Job Type	
●	Bridge
◆	Interchange
▬	Roadway
◆◆◆◆	New Location

Second Connecting Arkansas Program

 Highway 22 to Interstate 40
(Two Lanes)
\$270 Million

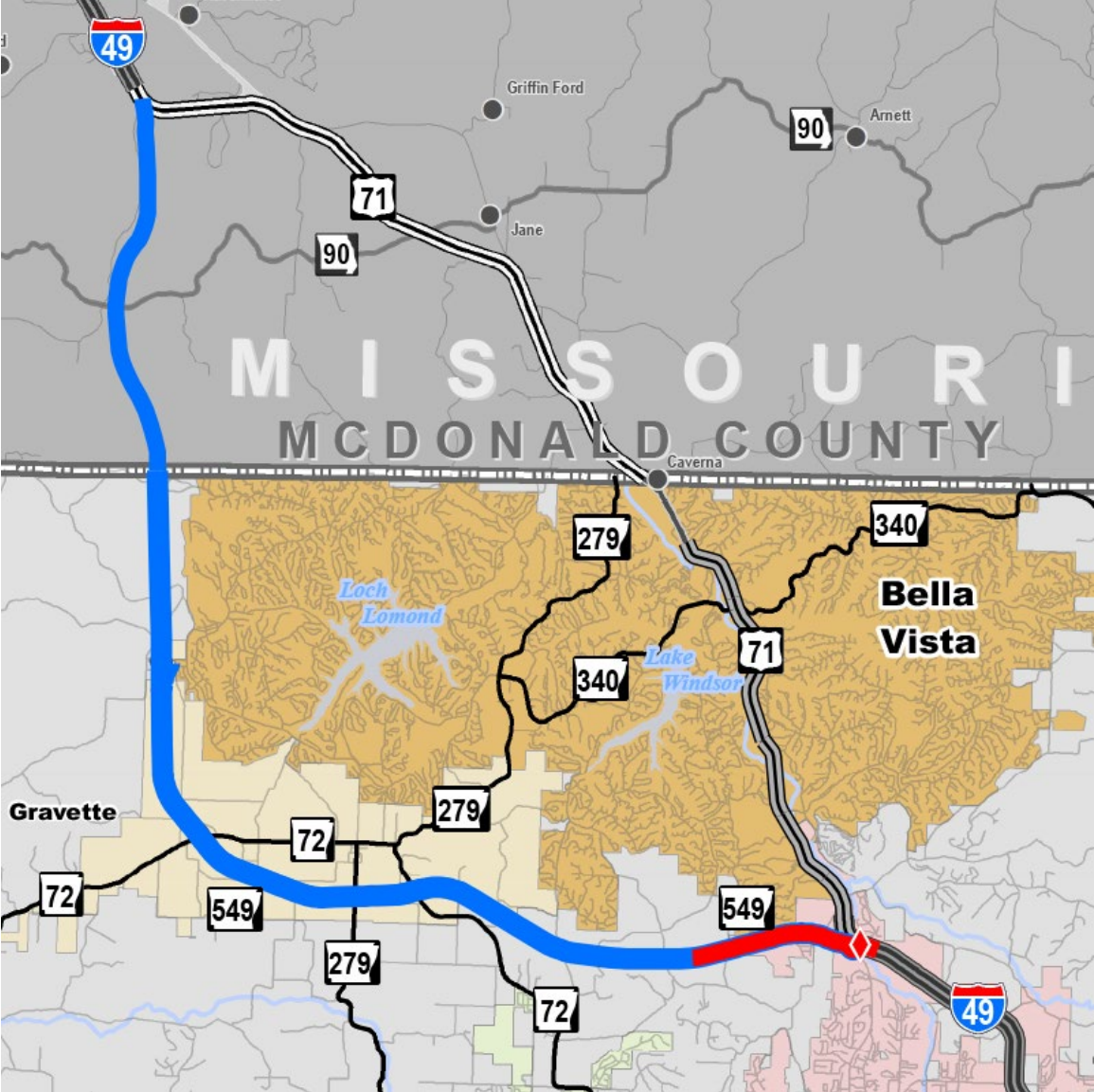
 "Y" City to South of Greenwood
(Two Lanes)
\$270 Million





Local Projects

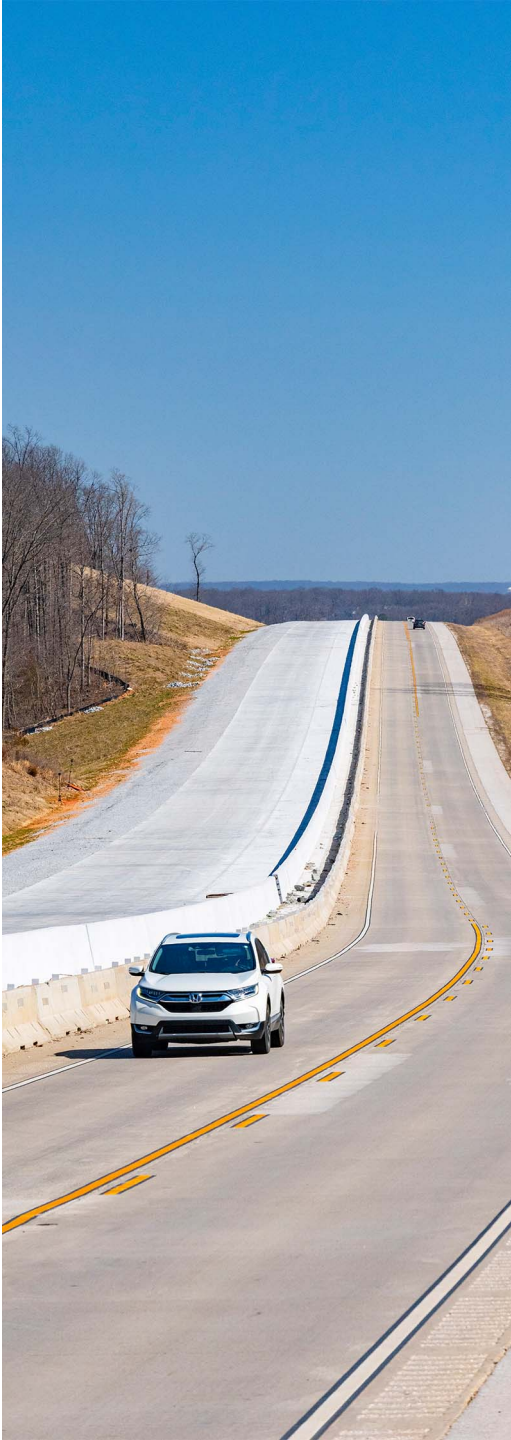
Bella Vista Bypass



Completed	
Number of Projects:	4
Miles:	15
Amount (Millions):	\$123

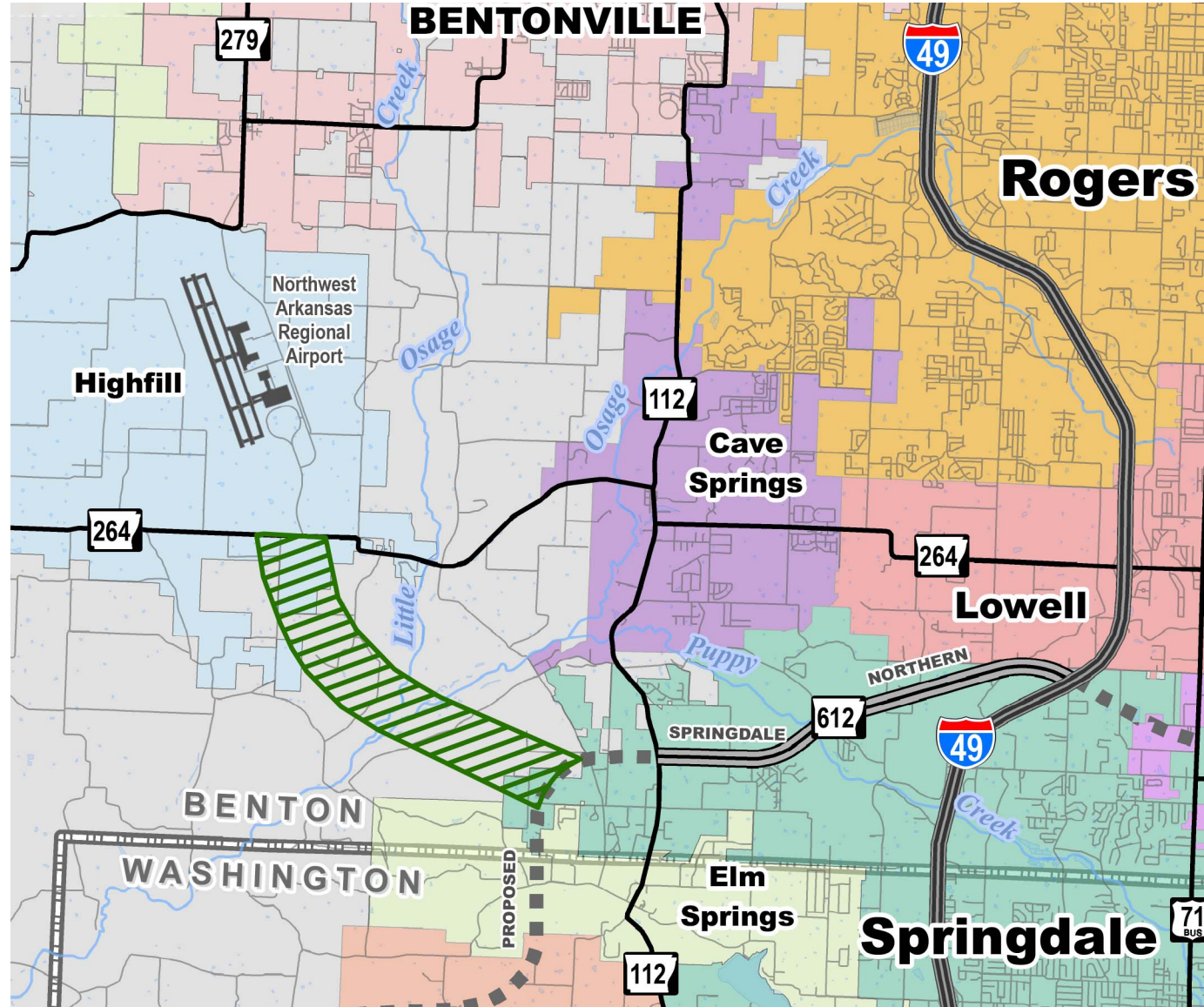
Under Construction	
Number of Projects:	2
Miles:	9
Amount (Millions):	\$94

MODOT	
Number of Projects:	1
Miles:	5
Amount (Millions):	\$59



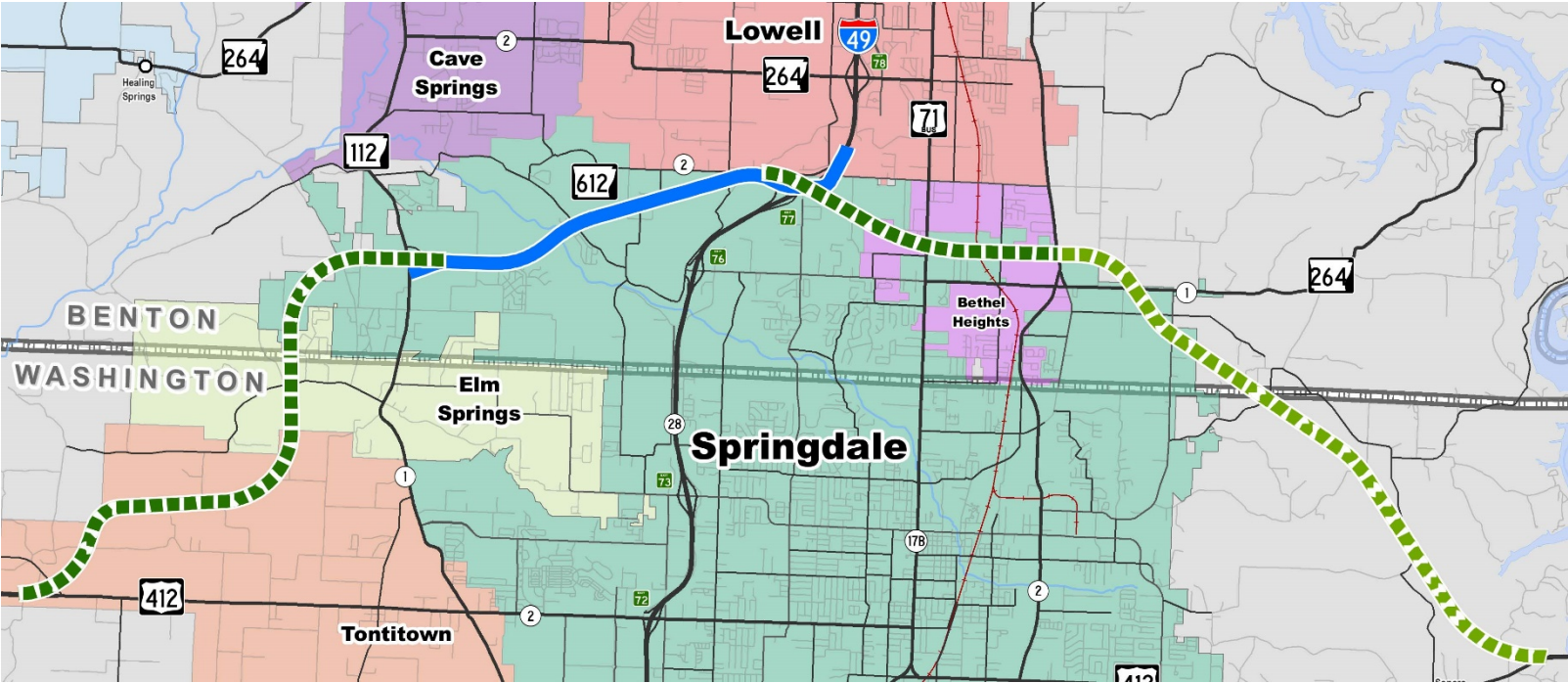
XNA Connector

- A new 4-lane fully-controlled access roadway
- Connecting XNA access to Springdale Bypass, Project Development ongoing
- Funding for Project Development in 2021-2024 STIP



Springdale Bypass

- 4-lane Freeway Facility



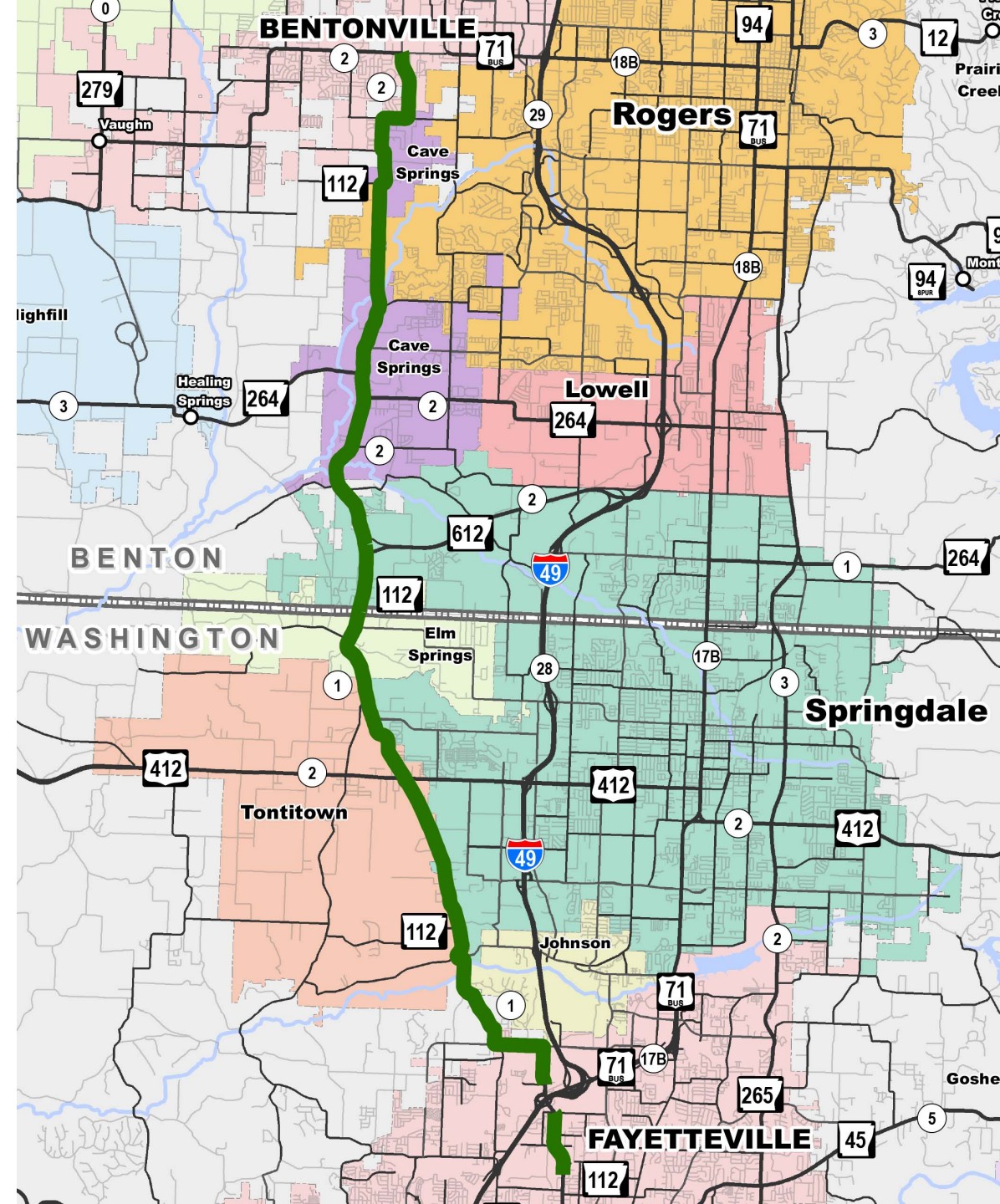
Completed	
Number of Projects:	1
Miles:	5
Amount (Millions):	\$101

Scheduled	
Number of Projects:	2
Miles:	10
Amount (Millions):	Est. \$181

Programmed	
Number of Projects:	1
Miles:	7
Amount (Millions):	Est. \$99

Highway 112

- Widen to 4 or 5 lanes
- Nine projects to widen 20 miles between Fayetteville and Bentonville
- All projects expected to be shovel-ready by mid-2024



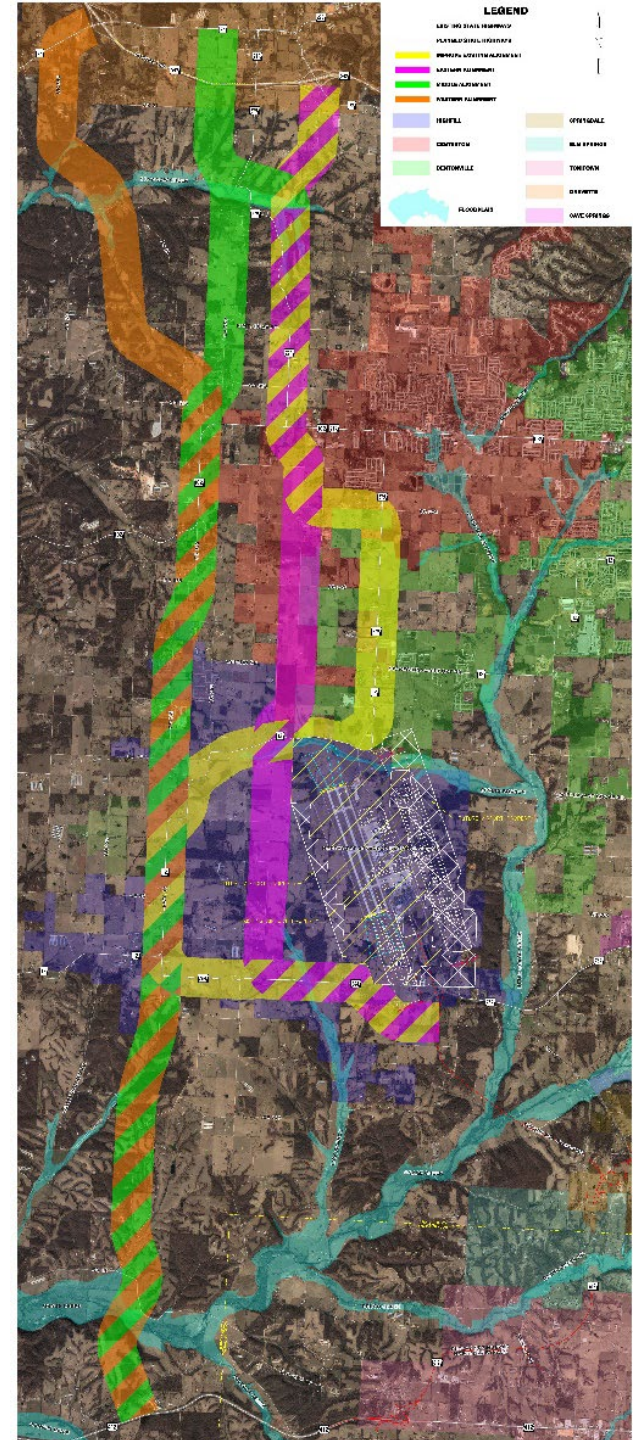


Western North-South Connector Study

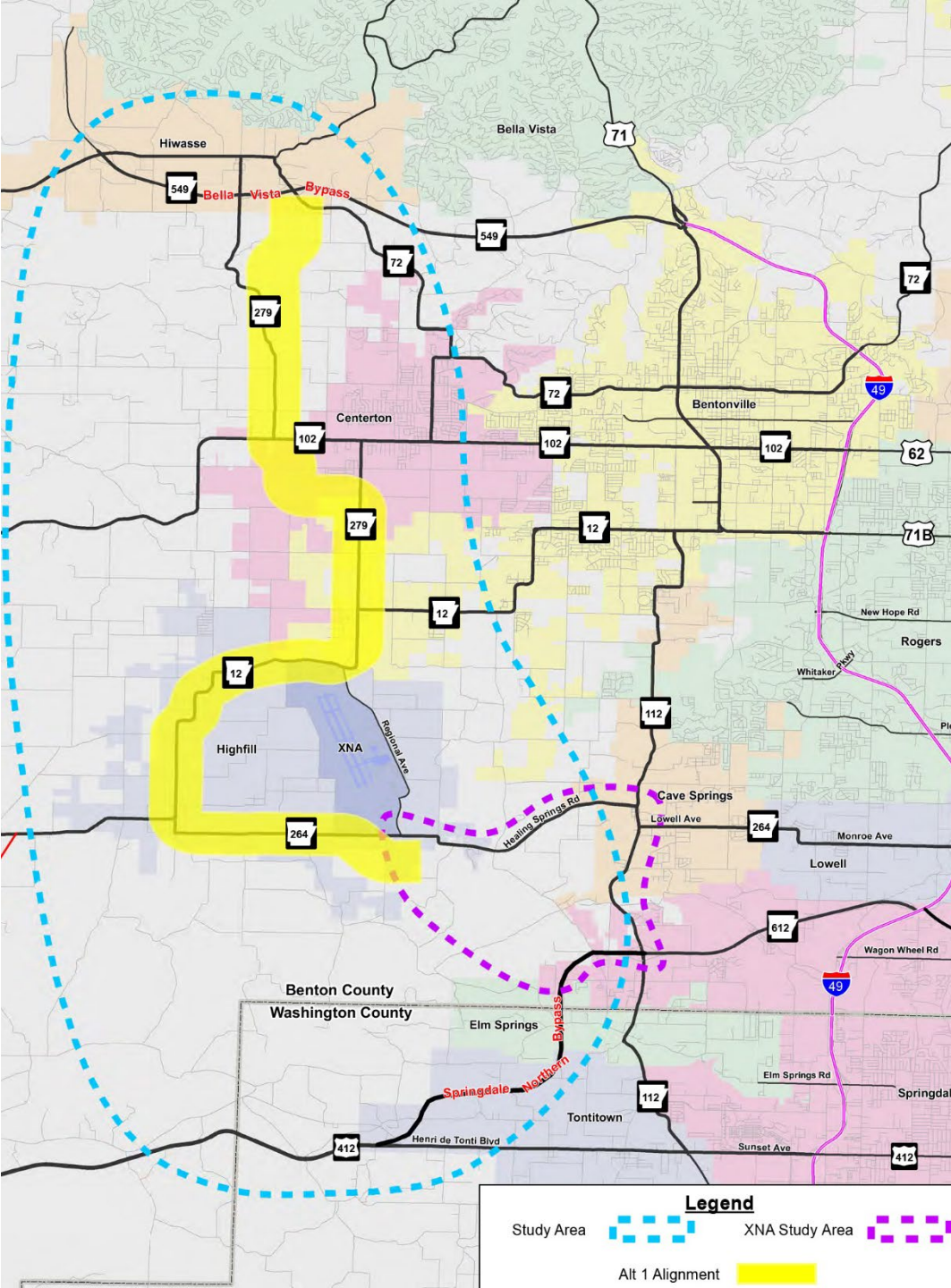
Virtual Public Meeting
August 29 – October 3, 2021

Four alternatives were developed and evaluated for:

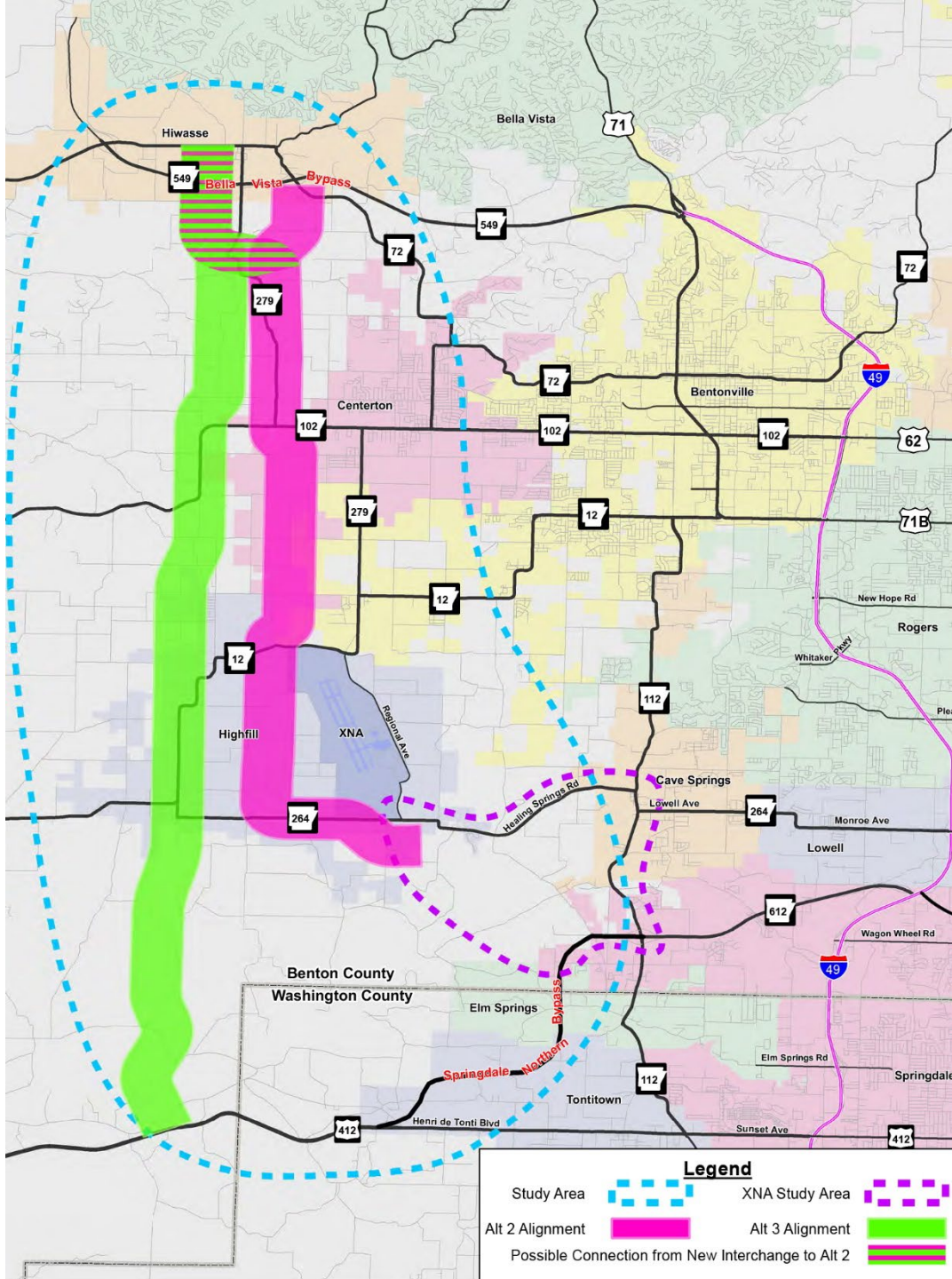
- Cost
- Environmental and Community Impacts
- Connectivity and Access
- Travel Time
- System Reliability
- Coordination with local master street plans (MSPs)
- Constructability
- Traffic Attracted



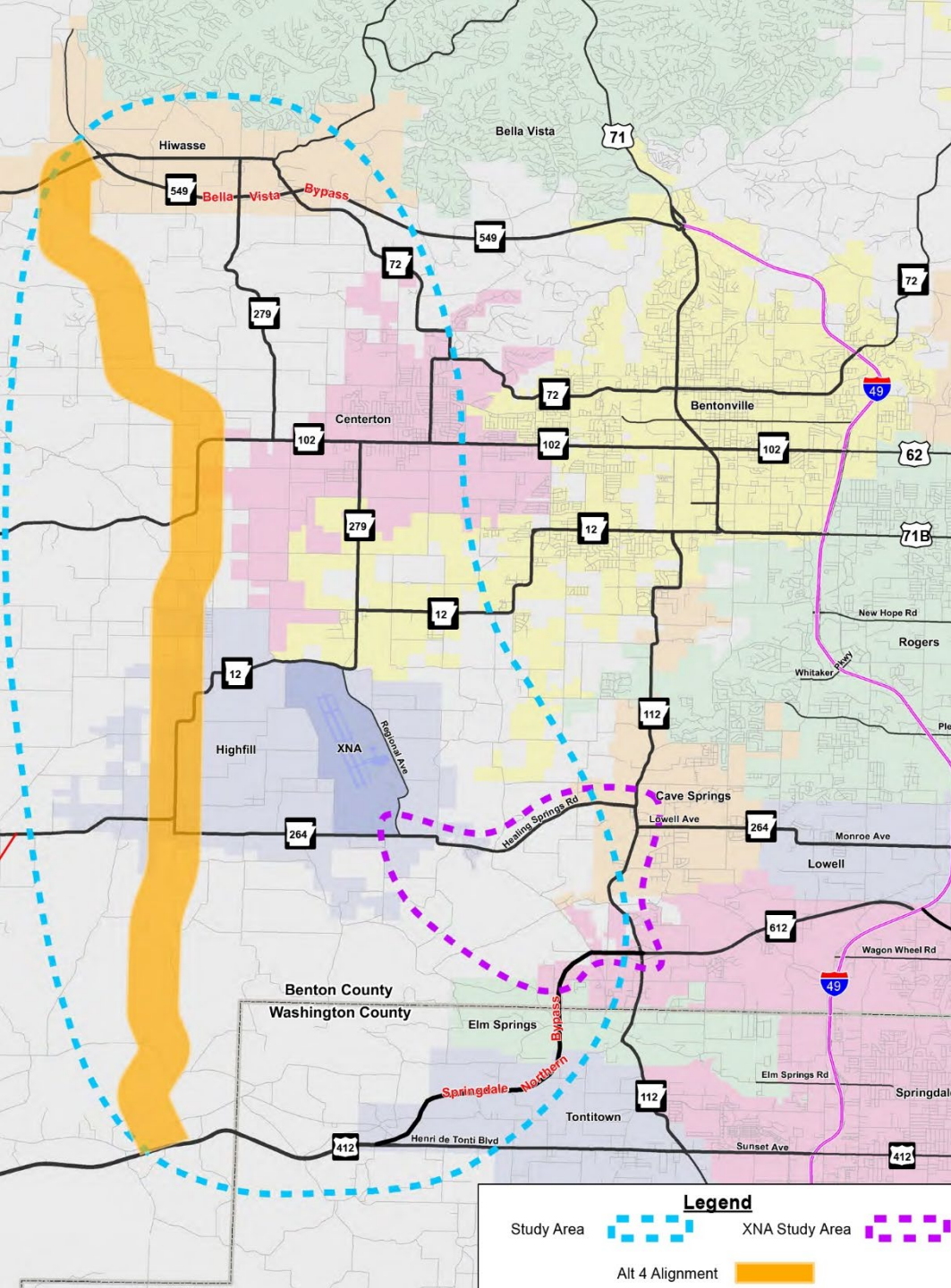
Western North-South Connector - Alternate 1



Western North-South Connector - Alternate 2 and 3



Western North-South Connector - Alternate 4



PUBLIC INVOLVEMENT

Virtual Meeting

Sunday, August 29 through
Sunday, October 3



WNSConnector.TransportationPlanRoom.com

- Study team will review stakeholder input and finalize study documents for presentation to the ARDOT Administration and Arkansas State Highway Commission
- At this time, no funds have been identified for implementation of any improvements discussed in this study
- Once funding is available, future steps include the environmental review process and design

Draft Final Report

Western North – South Connector Study
(Springdale - Gravette) (S)

Job 090573



Prepared For:
Arkansas Department of Transportation





Lorie Tudor, P.E.
Director

Gravette Kiwanis
October 1, 2021

