



Lorie H. Tudor, P.E.
Director

Conway Business Expo
October 14, 2021



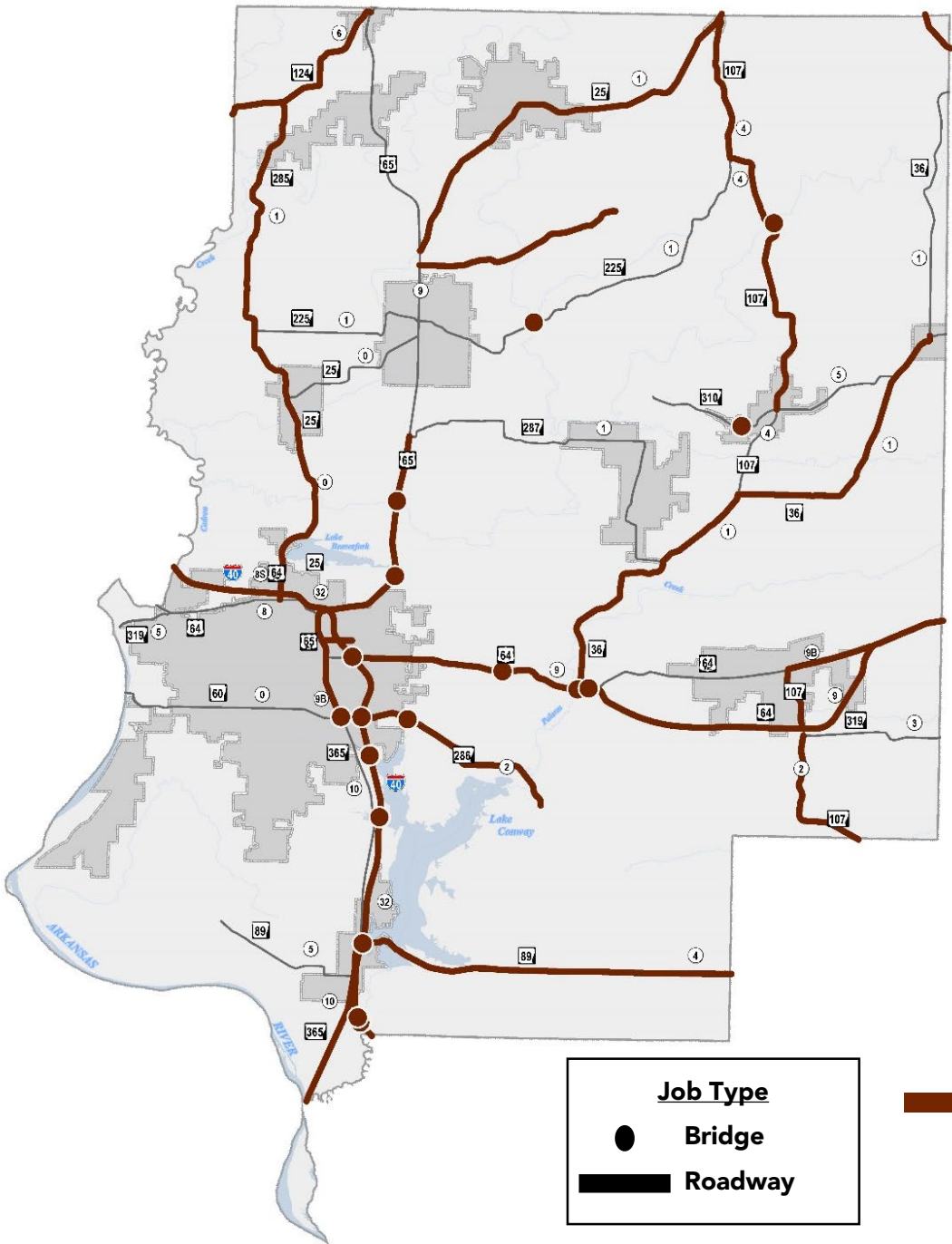




ISSUE 1

Every Arkansan Wins!

- Highways, Roads, and Bridges
- 70% (\$206 M) State Highways
- 15% (\$44 M) County Roads
- 15% (\$44 M) City Streets



Pavement & Bridge Preservation Projects

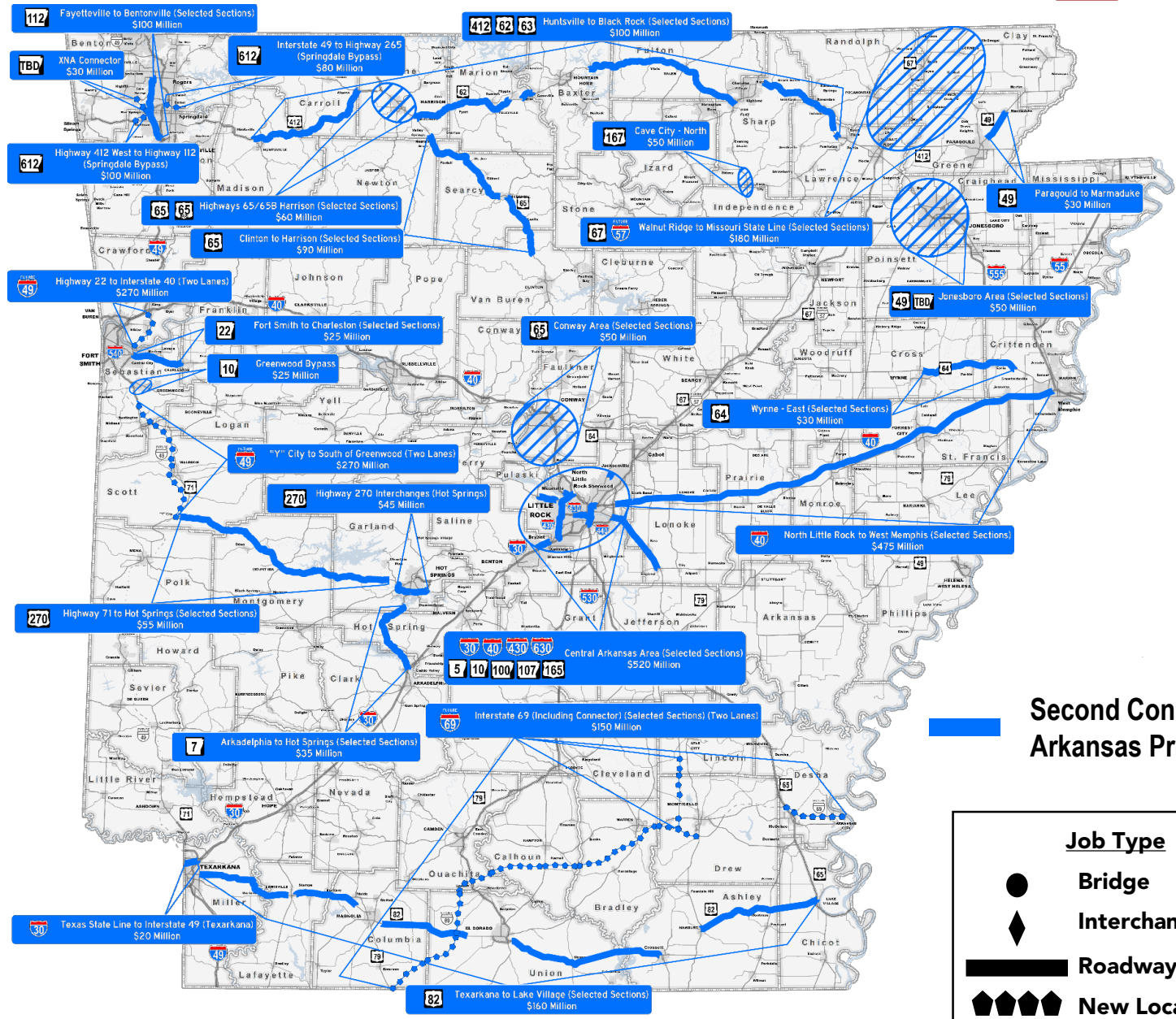
Faulkner County

- 47 Projects
- 153 Miles
- \$121 Million

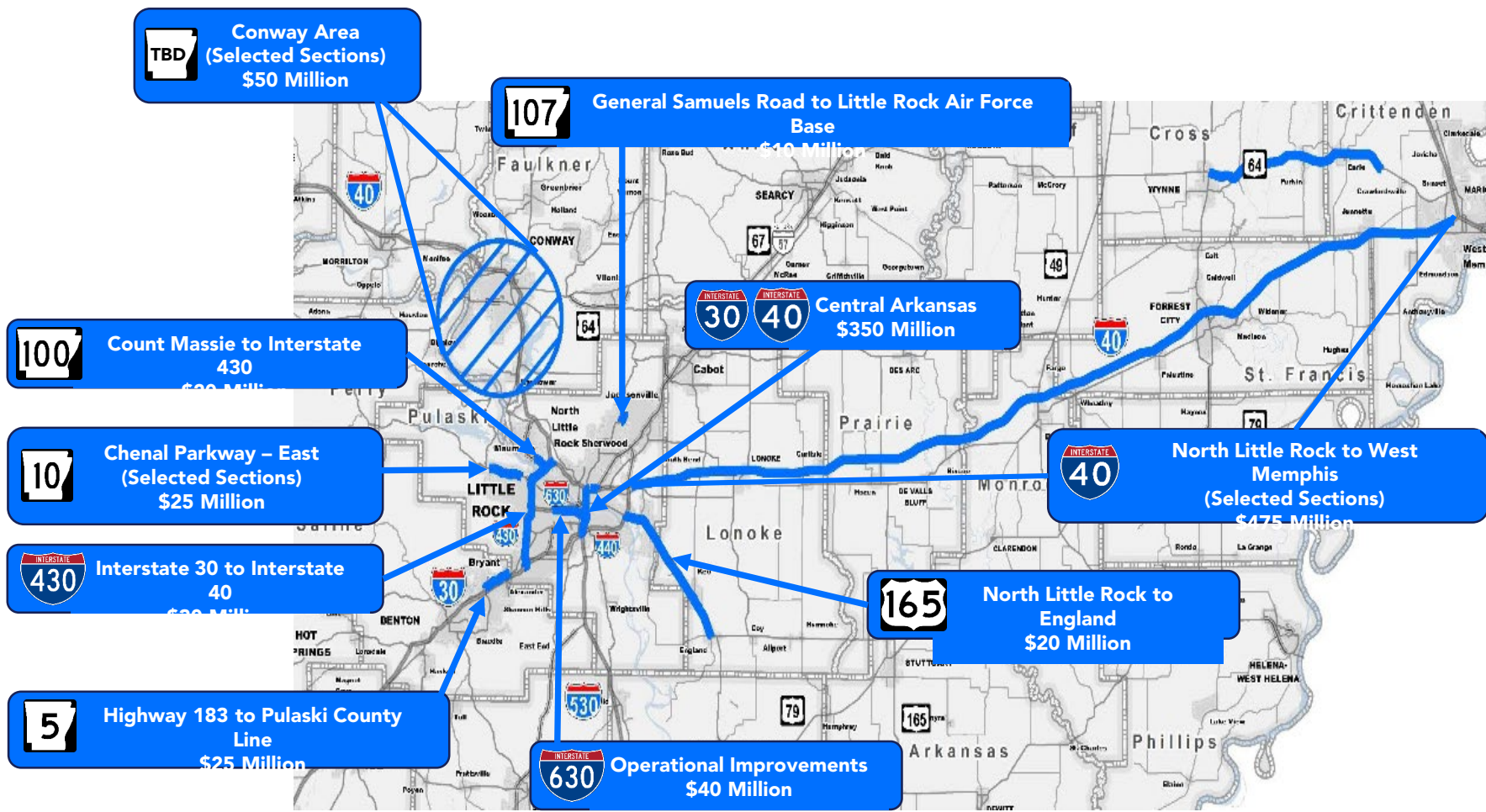
Job Type	
●	Bridge
—	Roadway

— 2024-2033 Draft Program of Preservation Projects (Pavement & Bridges)

- Capital and Congestion Relief
- \$3.6 Billion - 20 years
- July 2023



Second Connecting Arkansas Program

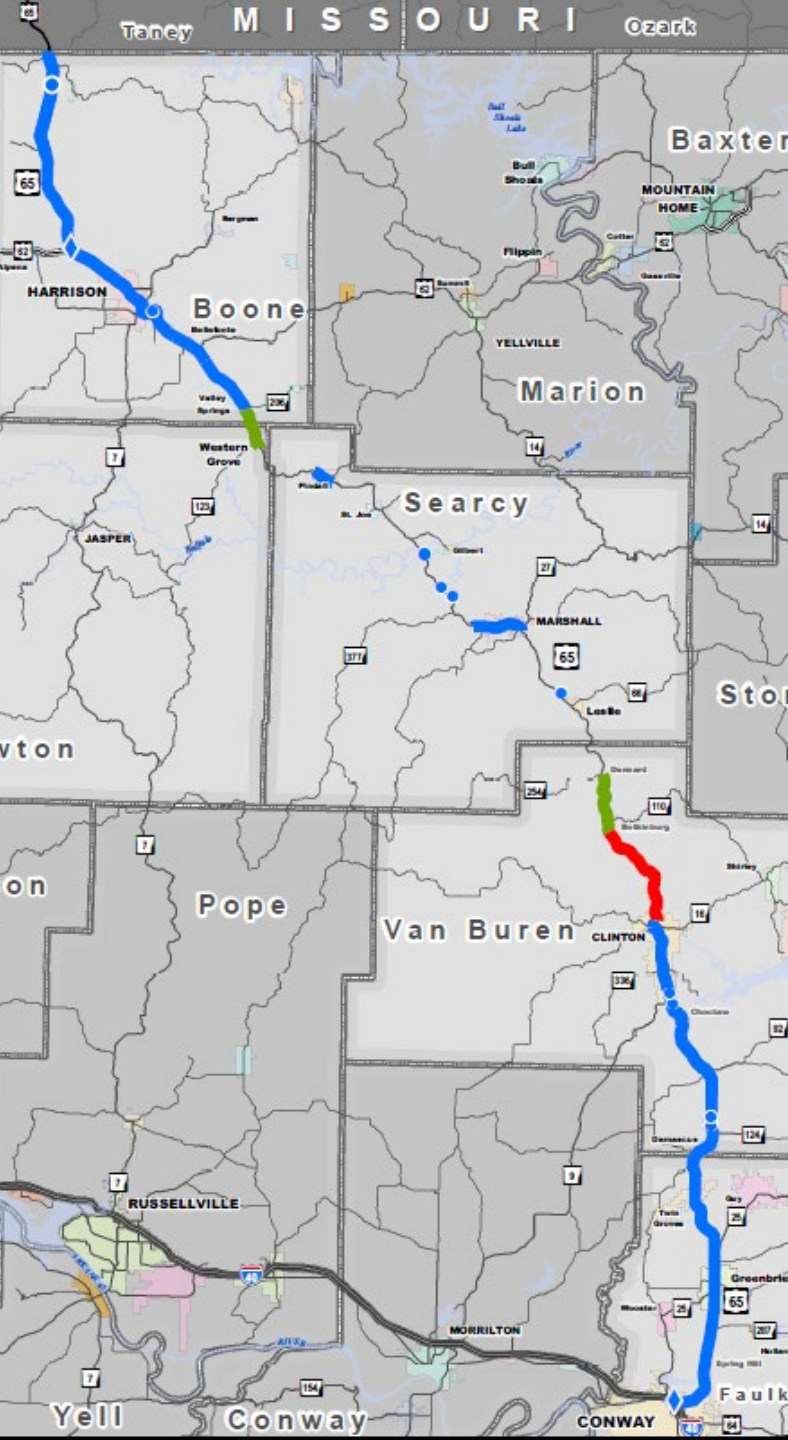


— Second Connecting Arkansas Program

Job Type	
●	Bridge
◆	Interchange
▬	Roadway
■ ■ ■ ■	New Location



Local Projects



Highway 65

Conway to Missouri

Completed

Number of Projects: 37
Miles: 122
Amount (Millions): \$311

Under Construction

Number of Projects: 1
Miles: 8
Amount (Millions): \$34

Programmed

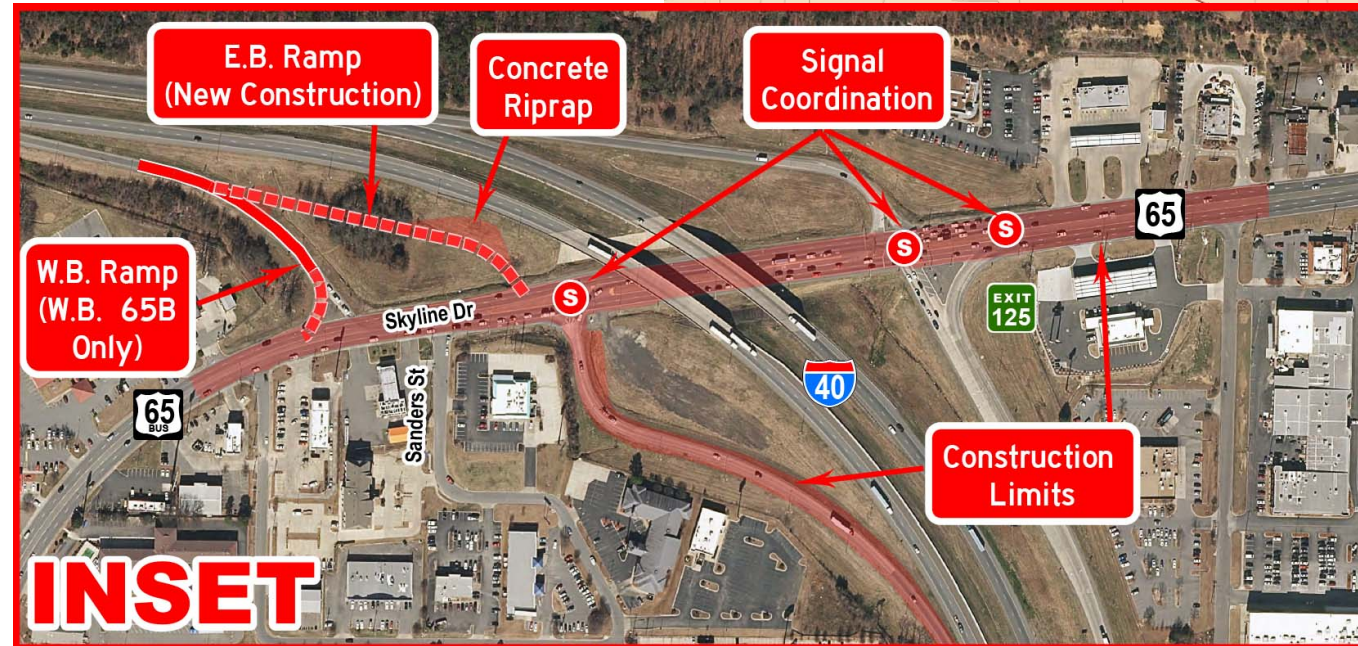
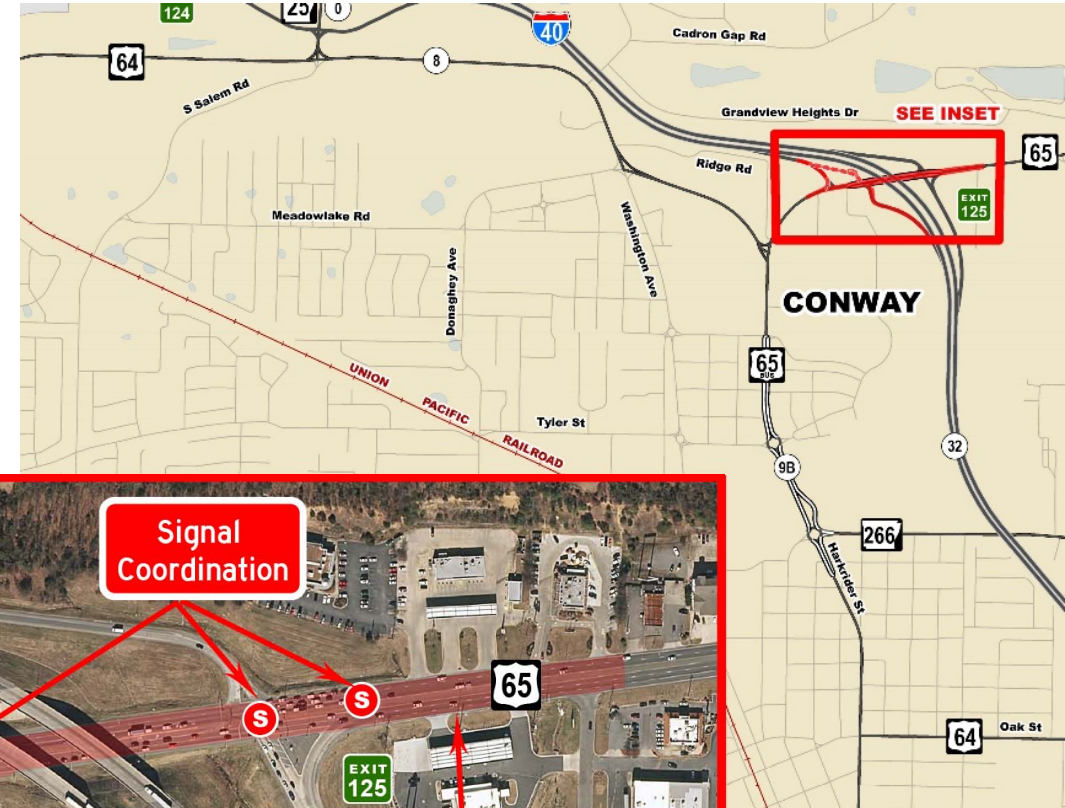
Number of Projects: 2
Miles: 7
Amount (Millions): Est. \$30-50



Highways 65 & 65B

Skyline Drive

- Interchange Improvements
- \$5.6 Million
- Completed August 2021



Highway 65B

Harkrider and Dave Ward Drive

Scheduled

Number of Projects: 2

Miles: 1

Amount (Millions): Est \$15-20



Highways 64 & 65B

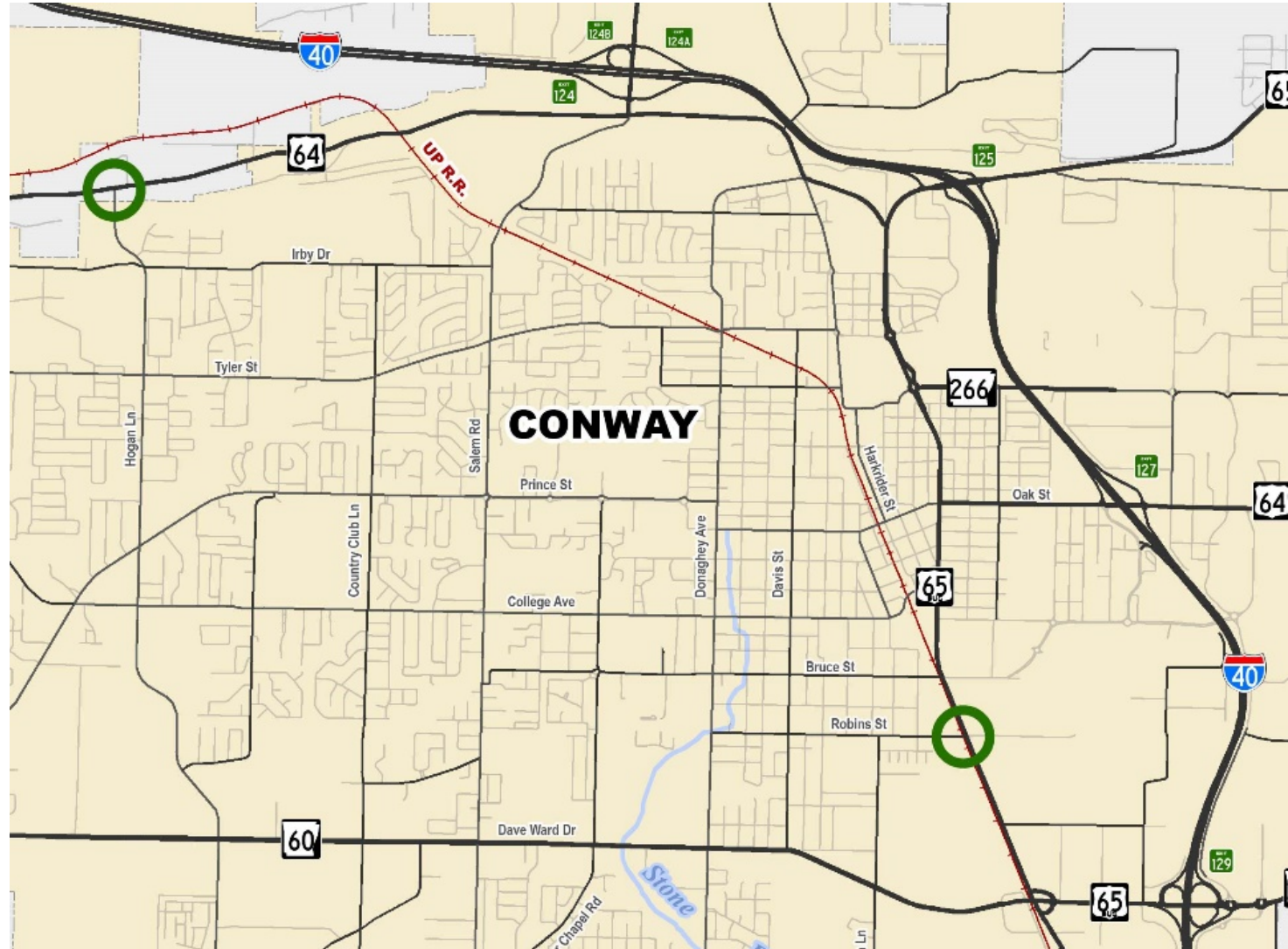
Old Morrilton Highway & Harkrider Street

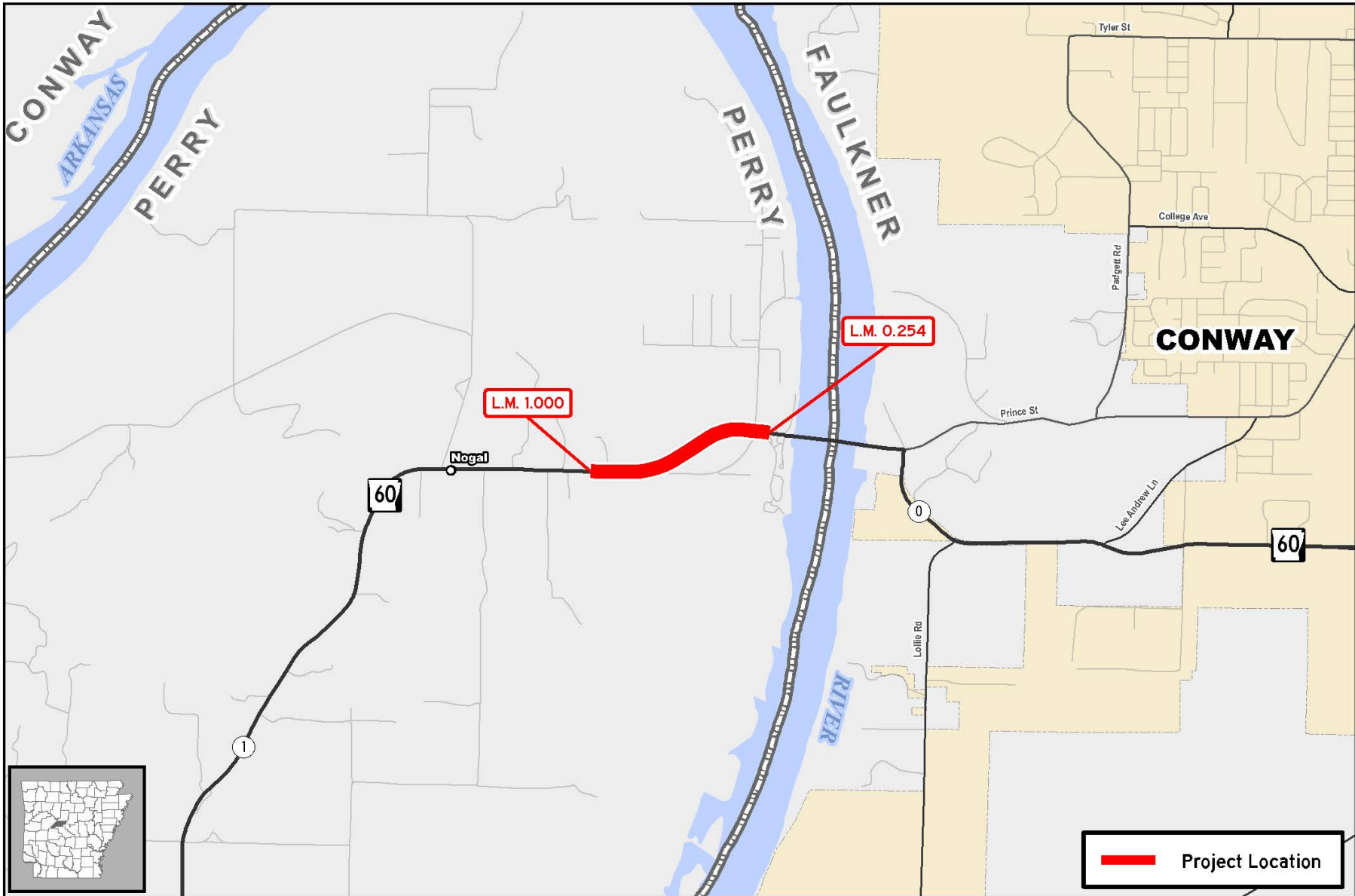
- 2 Locations
- Intersection Improvements

Scheduled

Number of Projects: 2

Amount (Millions): Est \$2-5





Job 080676
Arkansas River – West (Drainage Impvts.) (S)
 Hwy. 60, Sec. 1
 Perry County

 Project Location

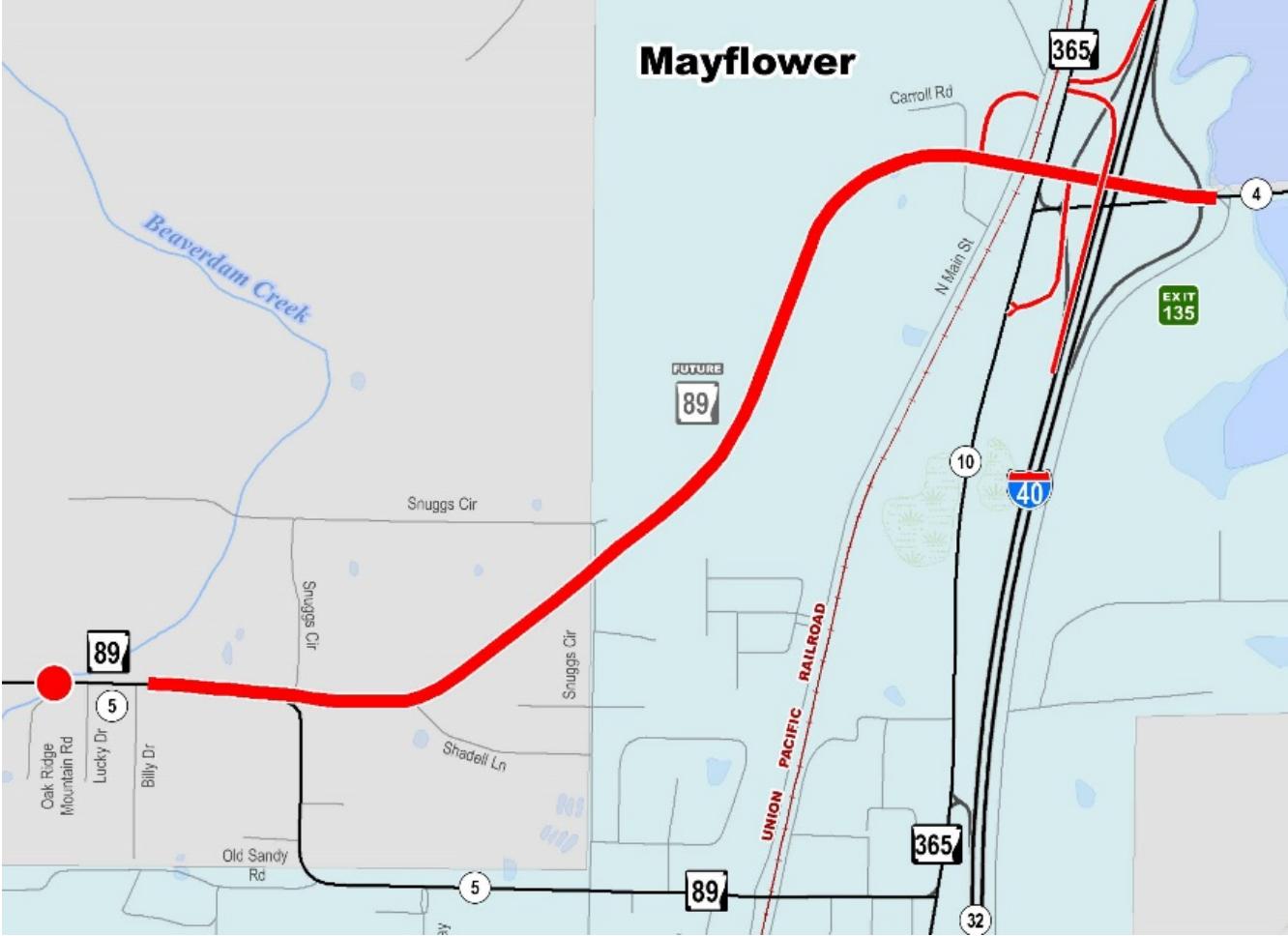


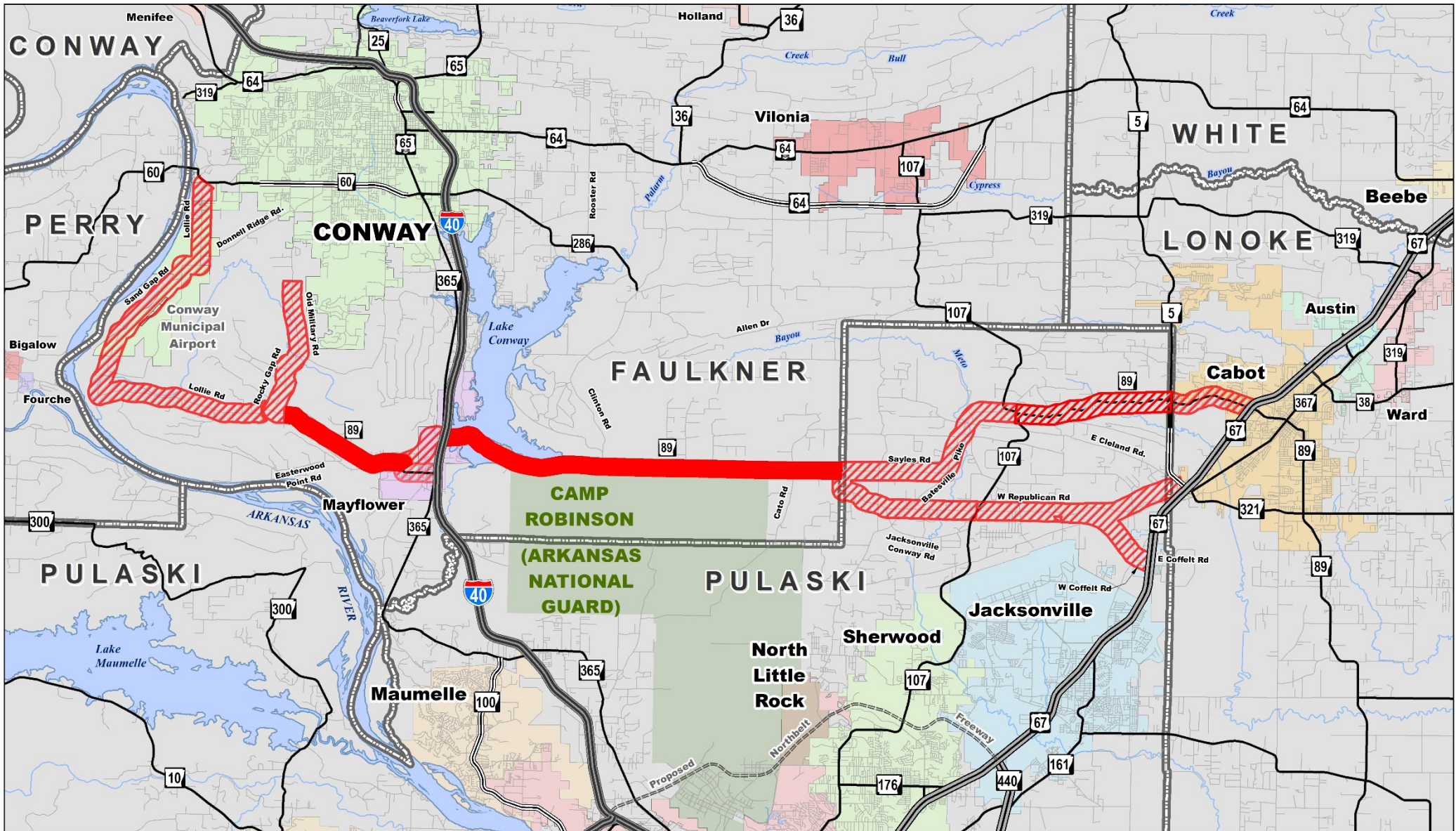
Highway 89

Mayflower

- Union Pacific Railroad Overpass
- Realignment and New Location

Under Construction
Miles: 2
Amount (Millions): \$26





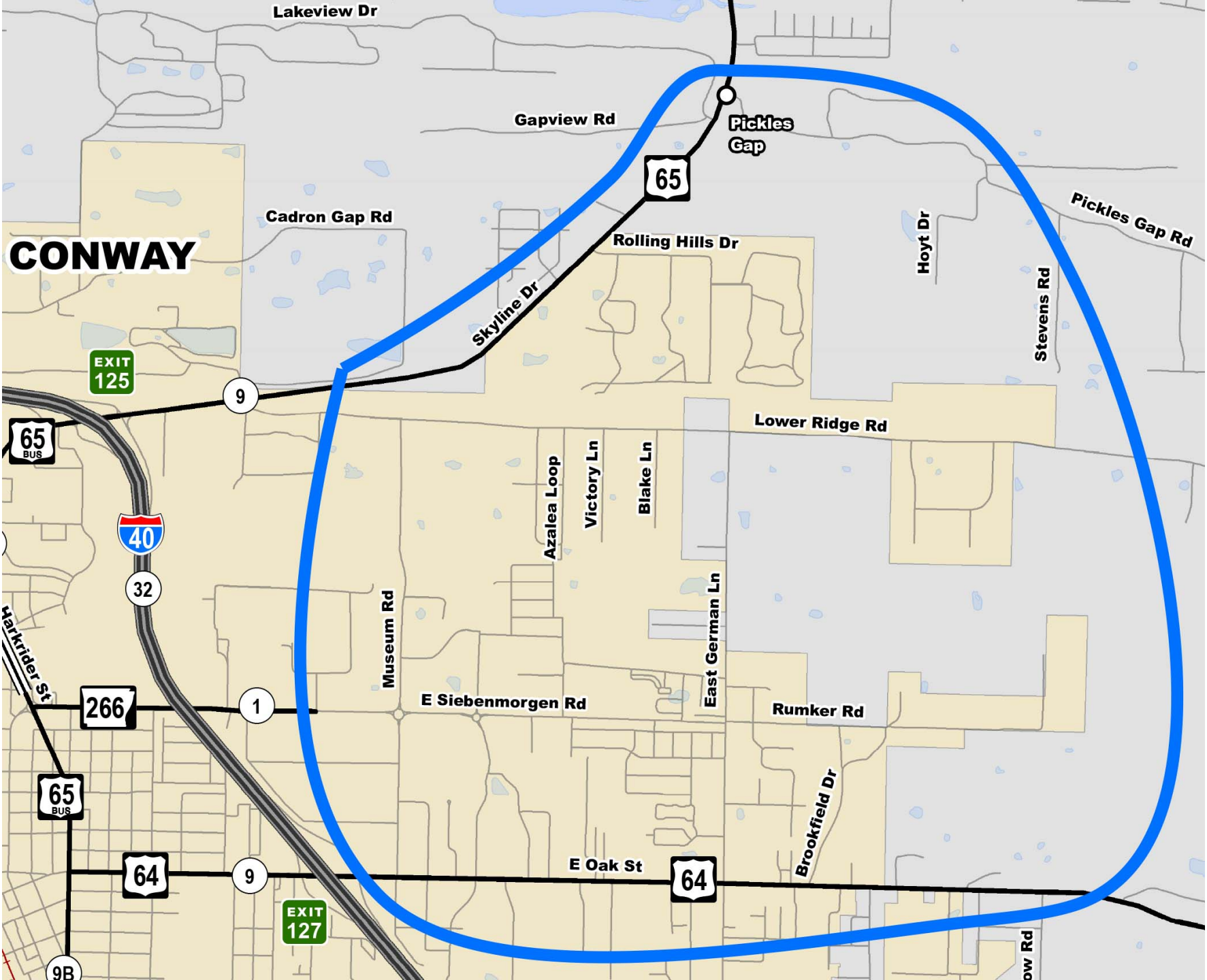
Highway 89 Corridor

Faulkner, Pulaski and Lonoke Counties



East Conway

(Connection Study)





Lorie H. Tudor, P.E.
Director

Conway Business Expo
October 14, 2021



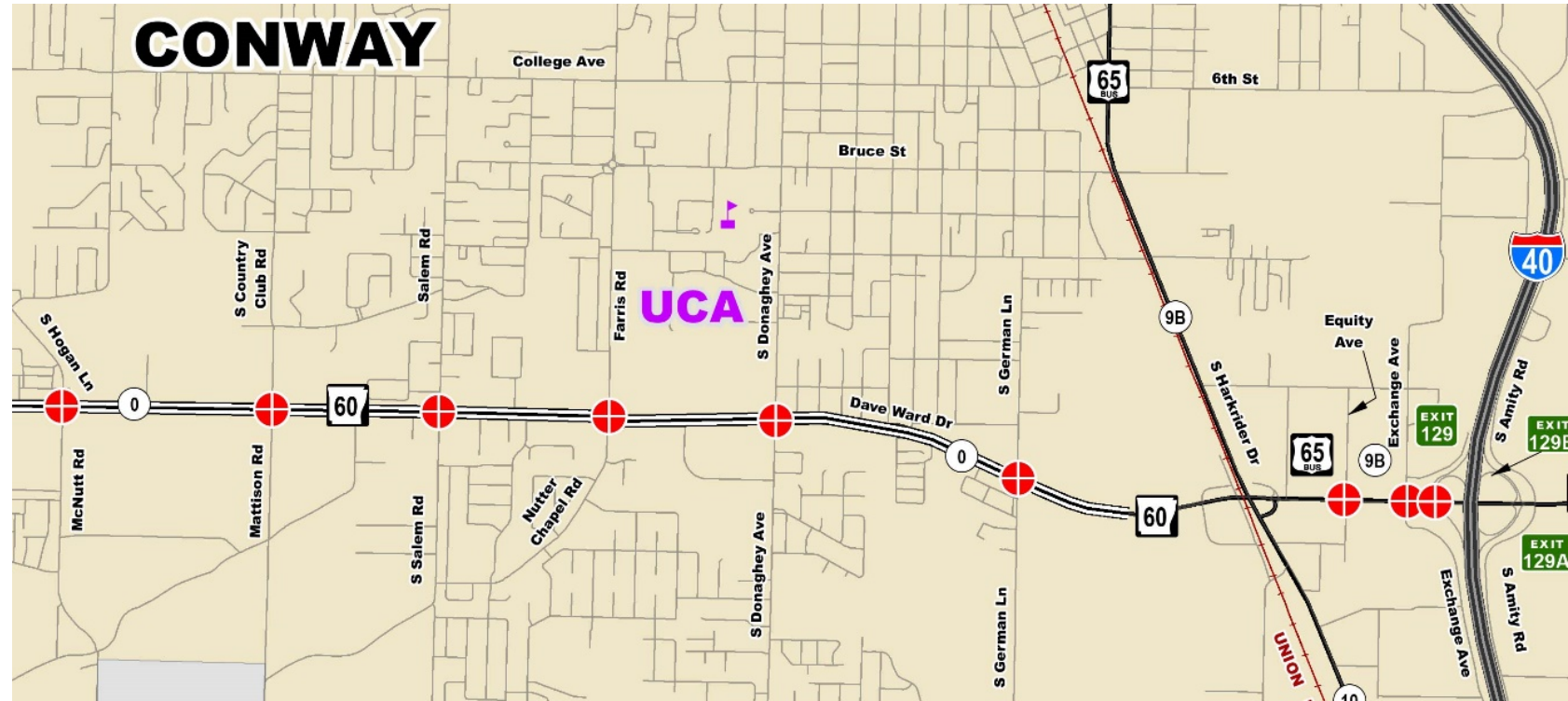
Highway 60

Dave Ward Drive

Completed

Intersections: 9

Amount (Millions): \$0.5



System Preservation Work

Route	Termini	Length (miles)	Cost x \$1M	Let	Est Complete
64	Hwy. 65B-East (Sel. Secs.)	3.25	\$2.3	Apr 2021	Late 2021
89	Clinton Rd. – I-40	7.86	\$1.5	Jan 2021	Late 2021
365	Hwy. 60 – Hwy. 89	6.55	\$2.5	Feb 2021	Late 2021
25	N. of Beaver Fork Lake – Hwy. 65	8.54	\$1 - \$3	2023	
60 & 65B	Hwy. 60 & 65B (Sel. Secs)	9.37	\$5 - \$10	2023	
64	Cadron Creek – Hwy. 65B	4.68	\$1 - \$3	2022	
65	Hwy. 124 – S. of Greenbrier (Sel. Secs.)	14.76	\$5 - \$10	2022	
89	Mayflower – West	3.42	\$1 - \$3	2024	