

Bridge B3731 Inspection Report



Latitude:34.90890, Longitude:-91.19129

Route:40 Section:43 Log:215.99

Arnold Road ID:48x40x43xA, Arnold Log mile:215.986

District 01, 95 - Monroe County

Owner: 1 - State Highway Agency

Inspection Direction: 4 - W to E

Bridge Posting Information

41 - Structure Open/Posted/Closed: A - Open, no restriction

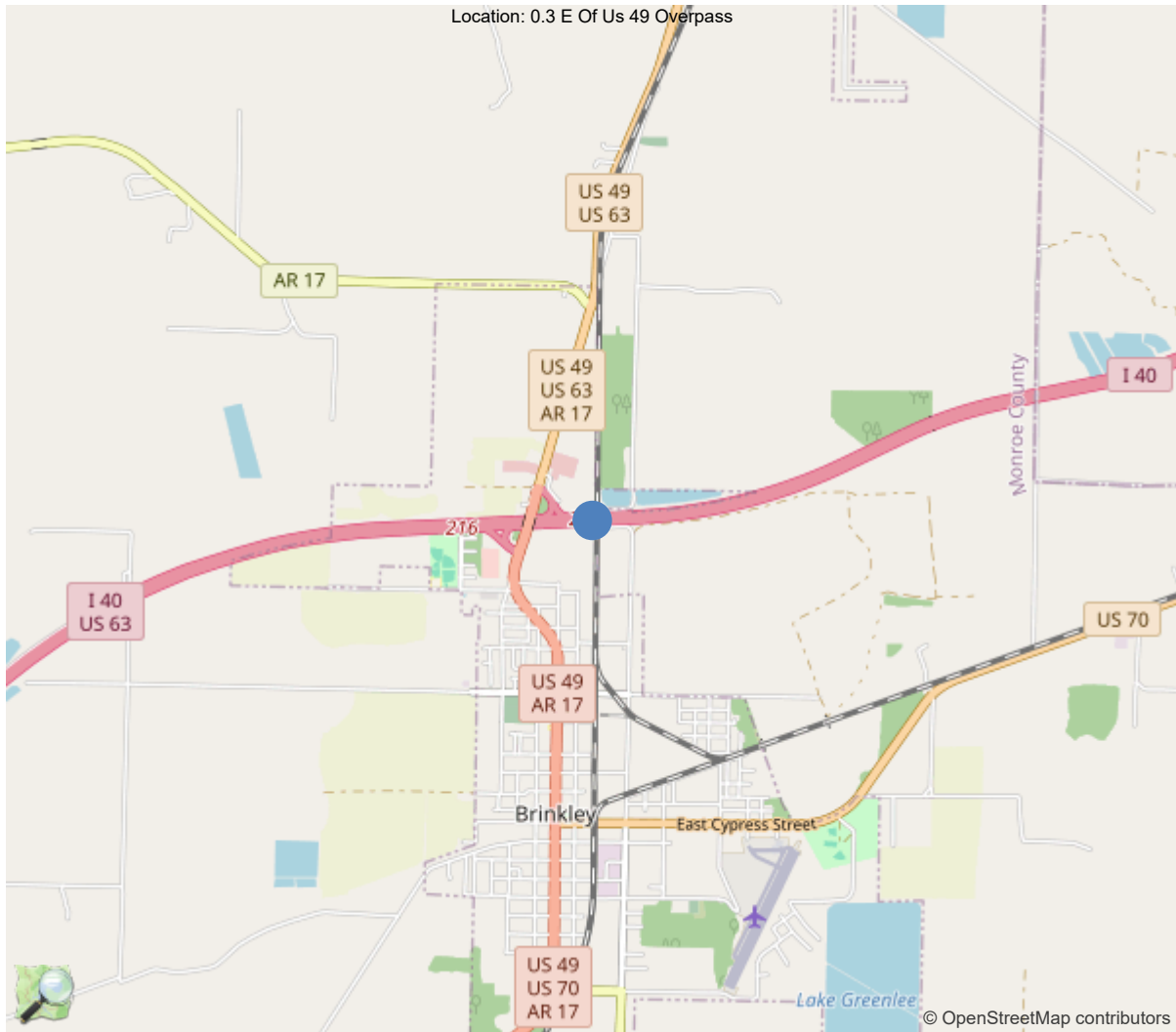
70 - Bridge Posting: 5 - Equal to or above legal loads

Legal Load	Calculated Capacity	Beginning of Bridge Sign Current Value	End of Bridge Sign Current Value
Code 4 (22 Tons)	40		
Code 9 (31 Tons)	50		
Code 5 (40 Tons)	60		

If calculated capacity is less than the Legal Load Listed, the Bridge Legally Requires Posting Signs to be installed by the Bridge Owner.



30"x36" AR



34.90890, -91.19129

National Bridge Inventory Data Sheet

IDENTIFICATION	
(1) State Names	5 - Arkansas
(8) Structure Number	B3731
(5) Inventory Route	1
(2) Highway Agency District	01 - District 01
(3) County Code	95 - Monroe County
(4) Place Code	8950
(6) Features Intersected	Cr-179/Z-D/L-1.73
(7) Facility Carried	I-40EB/Se43/215.99
(9) Location	0.3 E Of Us 49 Overpass
(11) Mile Point	215.99 mi
(12) Base Highway Network	Yes
(13) LRS Inventory Rte & Subrte	0000040430
(16) Latitude	34.9089
(17) Longitude	-91.19129
(98) Border Bridge State Code	
(99) Border Bridge Structure No.	
STRUCTURE TYPE AND MATERIAL	
(43) Main Structure Type	42
Material	4 - Steel continuous
Type	2 - Stringer/Multi-beam or girder
(44) Approach Structure Type	00
Material	0 - Other
Type	0 - Other
(45) No. of Spans in Main Unit	3
(46) No. of Approach Spans	0
(107) Deck Structure Type	1 - Concrete Cast-in-Place
(108) Wearing Surface/Protective System	
Type of Wearing Surface	5 - Epoxy Overlay
Type of Membrane	0 - None
Type of Deck Protection	0 - None
AGE AND SERVICE	
(27) Year Built	1966
(106) Year Reconstructed	2000
(42) Type of Service	14
On	1 - Highway
Under	4 - Highway-railroad
(28) Lane	
On	2
Under	2
(29) Average Daily Traffic	38000
(30) Year of ADT	2024
(109) Truck ADT	58 %
(19) Bypass, Detour Length	1 mi
GEOMETRIC DATA	
(48) Length of Maximum Span	92 ft
(49) Structure Length	260 ft
(50) Curb or Sidewalk Width	
Left	0 ft
Right	0 ft
(51) Bridge Roadway Width Curb to Curb	40 ft
(52) Deck Width Out to Out	42.8 ft
(32) Approach Roadway Width (W/Shoulders)	40 ft
(33) Bridge Median	0 - No median
(34) Skew	0 Deg
(35) Structure Flared	0 - No flare
(10) Inventory Route Min Vert Clear	99.99 ft
(47) Inventory Route Total Horiz Clear	40 ft
(53) Min Vert Clear Over Bridge Rdwy	99.99 ft
(54) Min Vert Underclear	24.82 ft
Ref:	
(55) Min Lat Underclear RT	3.3 ft
Ref:	
(56) Min Lat Underclear LT	0 ft
NAVIGATION DATA	
(38) Navigation Control	N - Not applicable, no waterwa
(111) Pier Protection	1 - Navigation protection not
(39) Navigation Vertical Clearance	0 ft
(116) Vert-Lift Bridge Nav Min Vert Clear	0 ft
(40) Navigation Horizontal Clearance	0 ft

CLASSIFICATION	
(112) NBIS Bridge Length	Y
(104) Highway System	1
(26) Functional Class	1 - Rural Principal Arterial -
(100) Defense Highway	1 - The inventory route is on
(101) Parallel Structure	R - The right structure of par
(102) Direction of Traffic	1 - way traffic
(103) Temporary Structure	
(105) Federal Lands Highways	0 - N/A
(110) Designated National Network	1 - The inventory route is par
(20) Toll	3 - On free road. The structu
(21) Maintain	1 - State Highway Agency
(22) Owner	1 - State Highway Agency
(37) Historical Significance	5 - Bridge is not eligible for
CONDITION	
(58) Deck	7
(59) Superstructure	8
(60) Substructure	7
(61) Channel & Channel Protection	N
(62) Culverts	N
LOAD RATING AND POSTING	
(31) Design Load	4 - M 18 / H 20
(63) Operating Rating Method	1
(64) Operating Rating	
Type	1 - Load Factor(LF)
Rating	60
(65) Inventory Rating Method	1 - Load Factor(LF)
(66) Inventory Rating	
Type	
Rating	36
(70) Bridge Posting	5 - Equal to or above legal loads
(41) Structure Open/Posted/Closed	A - Open, no restriction
APPRAISAL	
(67) Structural Evaluation	
(68) Deck Geometry	7
(69) Clearances, Vertical/Horizontal	2
(71) Waterway Adequacy	N
(72) Approach Roadway Alignment	7
(36A) Bridge Railings	0 - Inspected feature does not meet
(36B) Transitions	1 - Inspected feature meets current
(36C) Approach Guardrail	1 - Inspected feature meets current
(36D) Approach Guardrail Ends	1 - Inspected feature meets current
(113) Scour Critical Bridges	N - Bridge not over waterway.
PROPOSED IMPROVEMENTS	
(75) Type of Work	31 - Replacement of bridge or
(76) Length of Structure Improvement	296 ft
(94) Bridge Improvement Cost	\$ 0
(95) Roadway Improvement Cost	\$ 247
(96) Total Project Cost	\$ 1084
(97) Year of Improvement Cost Estimate	2000
(114) Future ADT	17098
(115) Year of Future ADT	2028

INSPECTIONS *			
(90) Inspection Date			01/13/2025
(91) Frequency			48
(92) Critical Feature Inspection	Done	Freq. (Mon)	Date
A: Fracture Critical Detail	No		
B: Underwater Inspection	No		
C: Other Special Inspection	No		
* The inspection date and frequency information in this box contains the current NBI date and frequency information. Please refer to the report header for the date this inspection was conducted.			

Team Lead: Jonathan Gonzalez, Inspection Date: 09/05/2025

Specifications for National Bridge Inventory Sheets

IDENTIFICATION	
B.ID.01 Bridge Number	B3731
B.ID.02 Bridge Name	
B.ID.03 Previous Bridge No.	
B.W.01 Year Built	1966

LOCATION	
B.L.01 State Code	5 - Arkansas
B.L.02 County Code	95 - Monroe County
B.L.03 Place Code	08950 - Brinkley
B.L.04 Highway Agency District	01 - District 01
B.L.05 Latitude	34.9089
B.L.06 Longitude	-91.19129
B.L.07 Border Bridge Number	
B.L.08 Border Bridge State or Country Code	
B.L.09 Border Bridge Insp. Resp.	
B.L.10 Border Bridge Designated Lead State	
B.L.11 Bridge Location	0.3 E Of Us 49 Overpass
B.L.12 Metropolitan Planning Organization	

CLASSIFICATION	
B.CL.01 Owner	S01 - State transportation departme
B.CL.02 Maint. Responsibility	S01 - State transportation departme
B.CL.03 Federal or Tribal Land Access	N - Not Applicable
B.CL.04 Historic Significance	N - Bridge is not eligible for the
B.CL.05 Toll	N - Bridge does not carry a toll ro
B.CL.06 Emergency Evacuation Designation	

ROADSIDE HARDWARE	
B.RH.01A Bridge Railing Type	
B.RH.01B Bridge Railing Year (YY)	
B.RH.01C Bridge Railing Test Level	
B.RH.02A Transition Type	
B.RH.02B Transition Year (YY)	
B.RH.02C Transition Test Level	

BRIDGE GEOMETRY	
B.G.01 NBIS Bridge Length	252.5
B.G.02 Total Bridge Length	259.8
B.G.03 Max Span Length	91.9
B.G.04 Min Span Length	75
B.G.05 Bridge Width Out-to-Out	42.7
B.G.06 Bridge Width Curb-to-Curb	40
B.G.07 Left Curb or Sidewalk Width	0
B.G.08 Right Curb or Sidewalk Width	0
B.G.09 Approach Roadway Width	40

B.G.10 Bridge Median	0 - No median
B.G.11 Skew	0
B.G.12 Curved Bridge	N - Not curved
B.G.13 Max Bridge Height	32
B.G.14 Sidehill Bridge	N - Not a sidehill bridge
B.G.15 Irregular Deck Area	
B.G.16 Calculated Deck Area	11093.460000000001

LOADS AND LOAD RATING	
B.LR.01 Design Load	H20 - H-20
B.LR.02 Design Method	
B.LR.03 Load Rating Date	
B.LR.04 Load Rating Method	LFR - Load Factor Rating
B.LR.05 Inventory Load Rating Factor	1
B.LR.06 Operating Load Rating Factor	1.67
B.LR.07 Controlling Legal Load Rating Factor	
B.LR.08 Routine Permit Loads	Bridge does not carry routine permi

INSPECTION REQUIREMENTS	
B.IR.01 NSTM Inspection Required	N - NSTM inspection not required.
B.IR.02 Fatigue Details	N - No E/E' details
B.IR.03 UW Inspection Required	N - Underwater inspection not requi
B.IR.04 Complex Feature	N - Bridge does not have complex fe

COMPONENT CONDITION RATINGS	
B.C.01 Deck Condition Rating	7 - GOOD - Some minor defects.
B.C.02 Superstructure Condition	8 - VERY GOOD - Some inherent
B.C.03 Substructure Condition	7 - GOOD - Some minor defects.
B.C.04 Culvert Condition	N - NOT APPLICABLE - Component
B.C.05 Bridge Railing Condition	7 - GOOD - Some minor defects.
B.C.06 Bridge Railing Transitions Condition	9 - EXCELLENT - Isolated inher
B.C.07 Bridge Bearings Cond.	8 - VERY GOOD - Some inherent
B.C.08 Bridge Joints Condition	5 - FAIR - Some moderate defec
B.C.09 Channel Condition Rating	N - NOT APPLICABLE - Bridge do
B.C.10 Channel Protection Condition	
B.C.11 Scour Condition Rating	N - Bridge does not cross over
B.C.12 Bridge Condition Classification	G - Good
B.C.13 Lowest Condition Rating	7 - GOOD - Some minor defects.
B.C.14 NSTM Insp. Condition	N - NOT APPLICABLE - Component
B.C.15 UW Inspection Condition	

APPRAISAL	
B.AP.01 Approach Roadway Alignment	G - Good
B.AP.02 Overtopping Likelihood	0 - Never
B.AP.03 Scour Vulnerability	
B.AP.04 Scour Plan of Action	0 - A scour POA is not required.
B.AP.05 Seismic Vulnerability	A - Seismic evaluation completed. B

Team Lead: Jonathan Gonzalez, Inspection Date: 09/05/2025

SPAN SETS			
M1			
B.SP.02 # of Spans	3	B.SP.08 Deck Interaction	CU - Composite - unshored cons
B.SP.03 # of Beam Lines	6	B.SP.09 Deck Material and Type	C01 - Reinforced concrete - ca
B.SP.04 Span Material	S01 - Steel - rolled	B.SP.10 Wearing Surface	P01 - Polymer - epoxy
B.SP.05 Span Continuity	2 - Continuous	B.SP.11 Deck Protective System	0 - None
B.SP.06 Span Type	G02 - Girder/beam - I-shaped s	B.SP.12 Deck Reinforcing Protective System	C01 - Coating - epoxy coated
B.SP.07 Span Protective System	P01 - Patina - uncoated weathe	B.SP.13 Deck Stay-In-Place Forms	M01 - Metal

SUBSTRUCTURE SETS			
A1			
B.SB.02 No. of Substructure Units	2	B.SB.05 Substructure Protective System	0 - None
B.SB.03 Substructure Material	C01 - Reinforced concrete - ca	B.SB.06 Foundation Type	PX - Pile - other
B.SB.04 Substructure Type	A02 - Abutment - stub	B.SB.07 Foundation Protective System	0 - None
P1			
B.SB.02 No. of Substructure Units	2	B.SB.05 Substructure Protective System	C01 - Coating - paint
B.SB.03 Substructure Material	C01 - Reinforced concrete - ca	B.SB.06 Foundation Type	PX - Pile - other
B.SB.04 Substructure Type	P01 - Pier - wall	B.SB.07 Foundation Protective System	0 - None

Team Lead: Jonathan Gonzalez, Inspection Date: 09/05/2025

HIGHWAY FEATURES					
H1					
B.F.02 Feature Location	C - Carried on bridge		B.H.09 Annual ADT	29000	
B.F.03 Feature Name	I-40EB/Se43/215.99		B.H.10 Annual ADTT	17690	
B.H.01 Functional Classification	1 - Interstate		B.H.11 Year of Annual ADT	2019	
B.H.02 Urban Code	99999		B.H.12 Highway Max Usable Vertical Clearance	99.9	
B.H.03 NHS Designation	Y - NHS		B.H.13 Highway Min Vertical Clearance	99.9	
B.H.04 National Highway Freight Network	1-T - TEMP - NHFN - 1 or 2 or		B.H.14 Highway Min Horizontal Clearance, Left		
B.H.05 STRAHNET Designation	1 - STRAHNET route		B.H.15 Highway Min Horizontal Clearance, Right		
B.H.06 LRS Route ID	40430		B.H.16 Highway Max Usable Surface Width	39.6	
B.H.07 LRS Mile Point	215.99		B.H.17 Bypass Detour Length	1	
B.H.08 Lanes On Highway	2		B.H.18 Crossing Bridge Number		
H2					
B.F.02 Feature Location	B - Below bridge		B.H.09 Annual ADT	18	
B.F.03 Feature Name	Cr-179/Z-D/L-1.73		B.H.10 Annual ADTT	8	
B.H.01 Functional Classification	7 - Local		B.H.11 Year of Annual ADT	1983	
B.H.02 Urban Code	99999		B.H.12 Highway Max Usable Vertical Clearance	24.8	
B.H.03 NHS Designation	N - Non-NHS		B.H.13 Highway Min Vertical Clearance	24.8	
B.H.04 National Highway Freight Network	N - Not on the NHFN		B.H.14 Highway Min Horizontal Clearance, Left	0	
B.H.05 STRAHNET Designation	N - Not a STRAHNET route		B.H.15 Highway Min Horizontal Clearance, Right	3.2	
B.H.06 LRS Route ID			B.H.16 Highway Max Usable Surface Width	39	
B.H.07 LRS Mile Point	1.73		B.H.17 Bypass Detour Length	1	
B.H.08 Lanes On Highway			B.H.18 Crossing Bridge Number		

HIGHWAY ROUTES					
Highway Parent	B.RT.01 Route Designation	B.RT.02 Route Number	B.RT.03 Route Direction	B.RT.04 Route Type	B.RT.05 Service Type
H1	R01	40E	1-T - TEMP - One-way traffic - NB or EB or SB or WB	1 - Interstate route	1 - Mainline
H2	R01	179	2-T - TEMP - Two-way traffic - NS or EW	4 - County route	X - Other

RAILROAD FEATURES				
R1				
B.F.02 Feature Location	B - Below bridge	B.RR.02 Railroad Min Vertical Clearance	22.9	
B.F.03 Feature Name	UP R/R			
B.RR.01 Railroad Service Type	F - Freight	B.RR.03 Railroad Min Horizontal Offset	15.9	

POSTING STATUS DATA	
B.PS.01 Load Posting Status	B.PS.02 Posting Status Change Date
PO - Permanent - Open	



Team Lead: Jonathan Gonzalez, Inspection Date: 09/05/2025

LOAD EVALUATION AND POSTING			
B.EP.01 Legal Load Configuration	B.EP.02 Legal Load Rating Factor	B.EP.03 Posting Type	B.EP.04 Posting Value



Inspection Notes

General Observation

Team Lead-Myron Futrell
Bridge Inspectors-Austin Crain, Charley Smith
UAS and Video Pole used for access.
No lane closure required for inspection.

58 - Deck (7 - GOOD CONDITION - some minor problems.)

Deck is cast in place concrete with an epoxy overlay. The deck in span 2 center deck has 1' area of epoxy overlay missing with shallow spall, and the undersurface of overhangs have cracks with efflorescence.

01/28/2019 lowered deck from 8 to 7 due to undersurface of overhangs having cracks with efflorescence.

59 - Superstructure (8 - VERY GOOD CONDITION - no problems noted.)

Superstructure is steel A588 girders. Girders are in good condition with span 2 girder 4 at first bottom splice plate there is one bolt missing.

01/04/2023 lowered superstructure from 9 to 8 due to span 2 girder 4 at first bottom splice plate there is one bolt missing.

60 - Substructure (7 - GOOD CONDITION - some minor problems.)

Reinforced concrete substructure is in overall good condition with the only thing noted on pier walls is graffiti, abutment back walls have a few hairline cracks with light efflorescence.

1/14/2025-Lowered substructure from 8 to 7 due to minor cracking in abutment backwalls with light efflorescence.

A-55 - Deck Washing Needed (Y)

Deck has small amount of dirt and debris in gutters.

A-56 - Joint Cleaning/Flushing Needed (Y)

Moderate debris impaction in joints.

A-59 - Joint Repair Needed (Y)

Abutment 1, compression joint seal: lost adhesion and sagging 1" for 10' in center.
Abutment 2, compression joint seal: lost adhesion with 15' total of sagging up to 1".

A-63 - Missing/Incorrect Log Mile Signage (Y)

No log mile signs in place.

A-64 - Vegetation Removal Requested (Y)

Small trees and vegetation growing under bridge and in slope pavement joints.



Asset #B3731 (Record Change)
I-40EB/Se43/215.99 over Cr-179/Z-D/L-1.73

Location: 0.3 E Of Us 49 Overpass

Team Lead: Jonathan Gonzalez **Inspection Date:** 09/05/2025

B.C.05 Bridge Railing Condition Rating (7 - GOOD - Some minor defects.)

Reinforced concrete bridge rail has vertical cracking, some with light efflorescence scattered throughout.

B.C.06 Bridge Railing Transitions Condition Rating (9 - EXCELLENT - Isolated inherent defects)

Approach railing is in good condition.

B.C.07 Bridge Bearings Condition Rating (8 - VERY GOOD - Some inherent defects.)

Elastomeric bearings are in good condition with areas of minor corrosion.

B.C.08 Bridge Joints Condition Rating (5 - FAIR - Some moderate defects.)

Joints are in overall fair condition with areas of lost adhesion and sagging and minor debris impaction.



Asset #B3731(Record Change)

I-40EB/Se43/215.99 over Cr-179/Z-D/L-1.73

Location: 0.3 E Of Us 49 Overpass

Team Lead: Jonathan Gonzalez Inspection Date: 09/05/2025

National Bridge Element Quantities and Notes

ELEMENTS	DESCRIPTION	UNITS	TOTAL	CS1	CS2	CS3	CS4
12	Reinforced Concrete Deck	SF	11050	10789	1	260	0
1080	Delamination/Spall/Patched Area	SF	1	0	1	0	0
1120	Efflorescence/Rust Staining	SF	260	0	0	260	0
510	Wearing Surfaces	SF	10320	10319	0	0	1
3230	Effectiveness (Wearing Surface)	SF	1	0	0	0	1
(12) Deck has epoxy overlay. Span 2, wearing surface, mid span, deck: 1' area of epoxy overlay missing with shallow spall. Effectiveness 1SF CS4 Undersurface of overhangs: transverse cracks with moderate efflorescence spaced 4' apart. Efflorescence 260SF CS3 Span 2, deck, mid span, deck: 1' area of epoxy overlay missing with shallow spall. Spall 1SF CS2							
107	Steel Open Girder/Beam	LF	1560	1559	1	0	0
1020	Connection	LF	1	0	1	0	0
515	Steel Protective Coating	SF	13822	13822	0	0	0
(107) Span 2, girder 4, first bottom splice plate: one bolt missing. Connection 1LF CS2							
210	Reinforced Concrete Pier Wall	LF	82	82	0	0	0
(210) No noted deficiencies.							
215	Reinforced Concrete Abutment	LF	136	129	7	0	0
1120	Efflorescence/Rust Staining	LF	6	0	6	0	0
1130	Cracking (RC and Other)	LF	1	0	1	0	0
(215) Abutment back walls: hairline vertical cracks some with light efflorescence. Efflorescence 6LF CS2 Abutment 1, pier cap, under girder 4: CS2 vertical crack. Crack 1LF CS2							
302	Compression Joint Seal	LF	86	29	57	0	0
2320	Seal Adhesion	LF	25	0	25	0	0
2350	Debris Impaction	LF	32	0	32	0	0
(302) Abutment 1 compression joint seal: lost adhesion and sagging 1" for 10' in center. Adhesion 10LF CS2 Abutment 2, compression joint seal: 15' total of lost adhesion and sagging up to 1". Adhesion 15LF CS2 Compression joint seals: moderate debris impaction on shoulders. Debris Impaction 32LF CS2							
310	Elastomeric Bearing	EA	24	23	1	0	0
1020	Connection	EA	1	0	1	0	0
(310) Bent 2, girder 2, elastomeric bearing: right bearing nut loose. Connection 1EA CS2							
321	Reinforced Concrete Approach Slab	SF	1752	1712	0	40	0
1130	Cracking (RC and Other)	SF	40	0	0	40	0
521	Concrete Protective Coating	SF	1752	1712	0	40	0

Location: 0.3 E Of Us 49 Overpass

Team Lead: Jonathan Gonzalez **Inspection Date:** 09/05/2025

ELEMENTS	DESCRIPTION	UNITS	TOTAL	CS1	CS2	CS3	CS4
3540	Effectiveness (Concrete Protective Coatings)	SF	40	0	0	40	0
(321) Approach slabs have epoxy overlay.							
Abutment 2, approach slab: CS3 crack coming through overlay. Cracking 40SF CS3							
Abutment 2, approach slab, concrete protective coating: CS3 crack coming through overlay. Effectiveness.							
331	Reinforced Concrete Bridge Railing	LF	520	390	70	60	0
1120	Efflorescence/Rust Staining	LF	70	0	70	0	0
1130	Cracking (RC and Other)	LF	60	0	0	60	0
(331) Concrete bridge rail left side: vertical cracks spaced roughly 10' some with light efflorescence. Efflorescence 20LF CS2							
Concrete bridge rail left side: 60' of longitudinal cracking 8" from top. Cracking 60LF CS2							
Concrete bridge rail, right side: vertical cracks spaced roughly 4' some with light efflorescence. Efflorescence 50LF CS2							

Inspection Photos and Notes



Side View / elevation



Top view / inventory



Name plate



Abutment 1, approach roadway: pavement raveling at joint with approach slab.



Typical longitudinal cracking in left bridge rail.



Bridge rail, left side



Bridge rail, right side



Abutment 1, transition, left side



Abutment 1, transition, right side



Abutment 1, approach rail, left side



Abutment 1, approach rail, right side



Span 3, undersurface of deck.



Typical deck



Typical cracking in overhang.



Span 2, undersurface of deck.



Span 1, undersurface of deck.



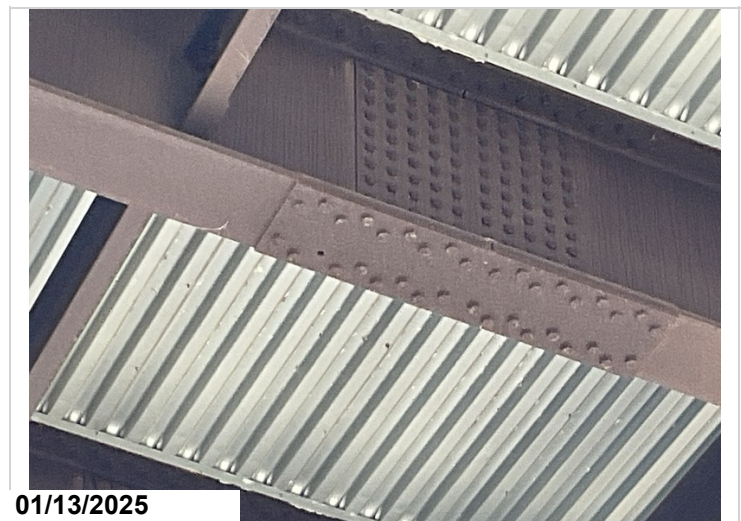
Typical field splice



Span 2, girder 4, first bottom splice plate: one bolt missing.



Typical intermediate bearing.



Span 2, girder 4, first splice: missing bolt in bottom flange.



Bent 2, ahead



Abutment 2



Typical vertical crack in abutment back wall with light efflorescence.



Bent 3, back



Bent 3, back



Dirt and debris in gutters.



Moderate debris impact in joints along shoulders.



Abutment 2, joint seal: 10' of lost adhesion with minor sagging.



No log mile sign in place.



Trees and vegetation growing under bridge.



Abutment 2, joint seal: 10' of lost adhesion with minor sagging.



Abutment 1, joint seal: 15' lost adhesion and sagging.



01/13/2025

Abutment 2, approach slab.



01/13/2025

Abutment 1, approach slab.

Maintenance Needs

Date Reported: 01/22/2013

Priority: D- Routine

Type of Work: Superstructure Repair

Status: Monitor

Component: Superstructure

Deficiency Description

Span 2, girder 4 at first bottom splice plate there is one bolt missing.

Remarks



Span 2, girder 4, first bottom splice plate: one bolt missing.

Maintenance Needs

Date Reported: 02/10/2025

Priority: D- Routine

Type of Work: Vandalism Problem

Status: Monitor

Component: Substructure

Deficiency Description

Abutment 2, slope pavement and bent 3 pier wall: graffiti painted on them.

Remarks



Abutment 2, slope pavement: graffiti.



Bent 3, pier wall, ahead face, graffiti.



Routine Maintenance

Check Box Maintenance Items

Type of Maintenance	Is Recommended?
A-54 - Sealable Deck Cracks	No
A-55 - Deck Washing Needed	Yes
A-56 - Joint Cleaning/Flushing Needed	Yes
A-57 - Beam End and Bearing Paint Needed	No
A-58 - Cap Cleaning/Flushing Needed	No
A-59 - Joint Repair Needed	Yes
A-60 - Full Beam Painting Needed	No
A-61 - Polymer Overlay Advised	No
A-62 - Hydro and LMC Advised	No
A-63 - Missing/Incorrect Log Mile Signage	Yes
A-64 - Vegetation Removal Requested	Yes
A-65 - Clogged deck drains?	
A-66 - Approach minor pothole/leveling needed	

A-54 - Sealable Deck Cracks (No)

A-55 - Deck Washing Needed (Yes)

Deck has small amount of dirt and debris in gutters.



Dirt and debris in gutters.

A-56 - Joint Cleaning/Flushing Needed (Yes)

Moderate debris impactation in joints.



Moderate debris impactation in joints along shoulders.

A-57 - Girder End and Bearing Painting Needed (No)

A-58 - Cap Cleaning/Flushing Needed (No)

A-59 - Joint Repair Needed (Yes)

Abutment 1, compression joint seal: lost adhesion and sagging 1" for 10' in center.

Abutment 2, compression joint seal: lost adhesion with 15' total of sagging up to 1".



Abutment 2, joint seal: 10' of lost adhesion with minor sagging.

A-60 - Full Girder Painting Needed (No)

A-61 - Polymer Overlay Advised (No)

A-62 - Hydro and LMC Advised (No)

A-63 - Missing/Incorrect Log Mile Signage (Yes)

No log mile signs in place.



No log mile sign in place.

A-64 - Vegetation Removal Requested (Yes)

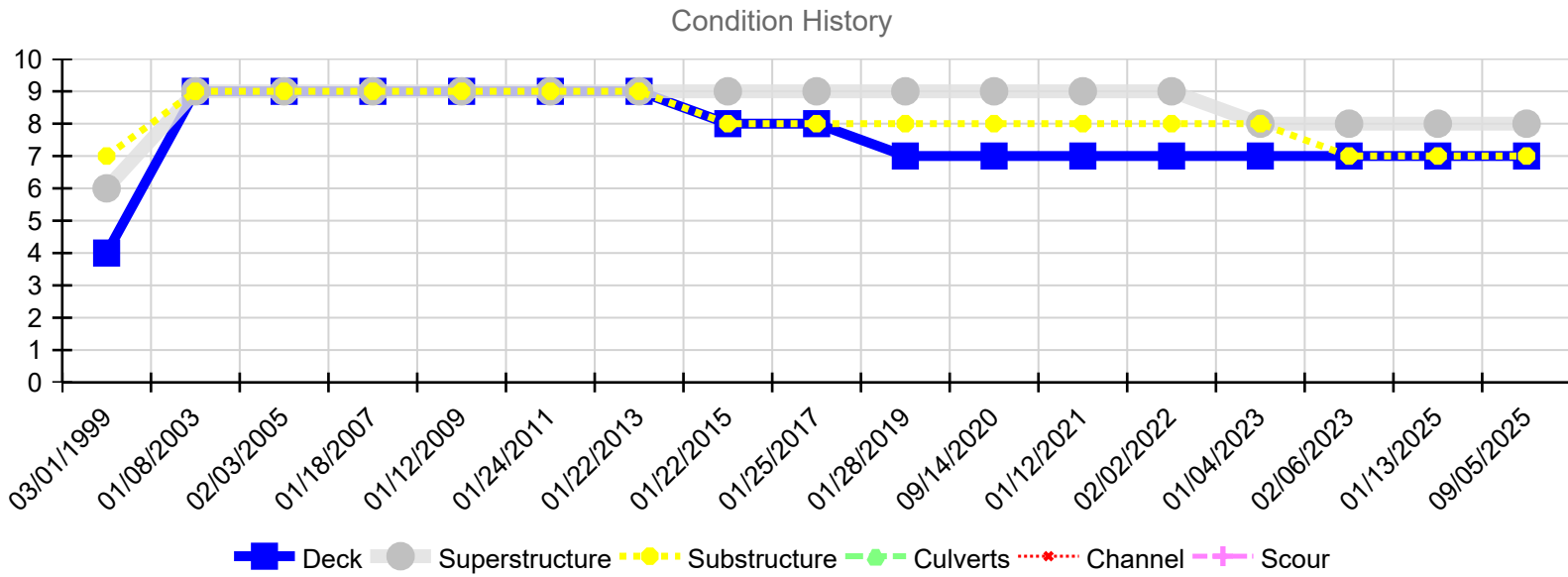
Small trees and vegetation growing under bridge and in slope pavement joints.



Trees and vegetation growing under bridge.

A-65 - Clogged deck drains?

A-66 - Approach minor pothole/leveling needed



Inspection Date	Deck	Superstructure	Substructure	Culverts	Channel	Scour
09/05/2025	7	8	7	N	N	N
01/13/2025	7	8	7	N	N	N
02/06/2023	7	8	8	N	N	N
02/06/2023	7	8	7	N	N	N
01/04/2023	7	8	8	N	N	N
02/02/2022	7	9	8	N	N	N
01/12/2021	7	9	8	N	N	N
09/14/2020	7	9	8	N	N	N
01/28/2019	7	9	8	N	N	N
01/25/2017	8	9	8	N	N	N
01/22/2015	8	9	8	N	N	N
01/22/2013	9	9	9	N	N	N
01/24/2011	9	9	9	N	N	N
01/12/2009	9	9	9	N	N	N
01/18/2007	9	9	9	N	N	N
02/03/2005	9	9	9	N	N	N
01/08/2003	9	9	9	N	N	N
03/01/1999	4	6	7	N	N	N