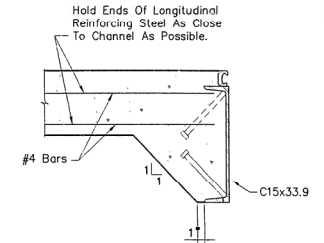
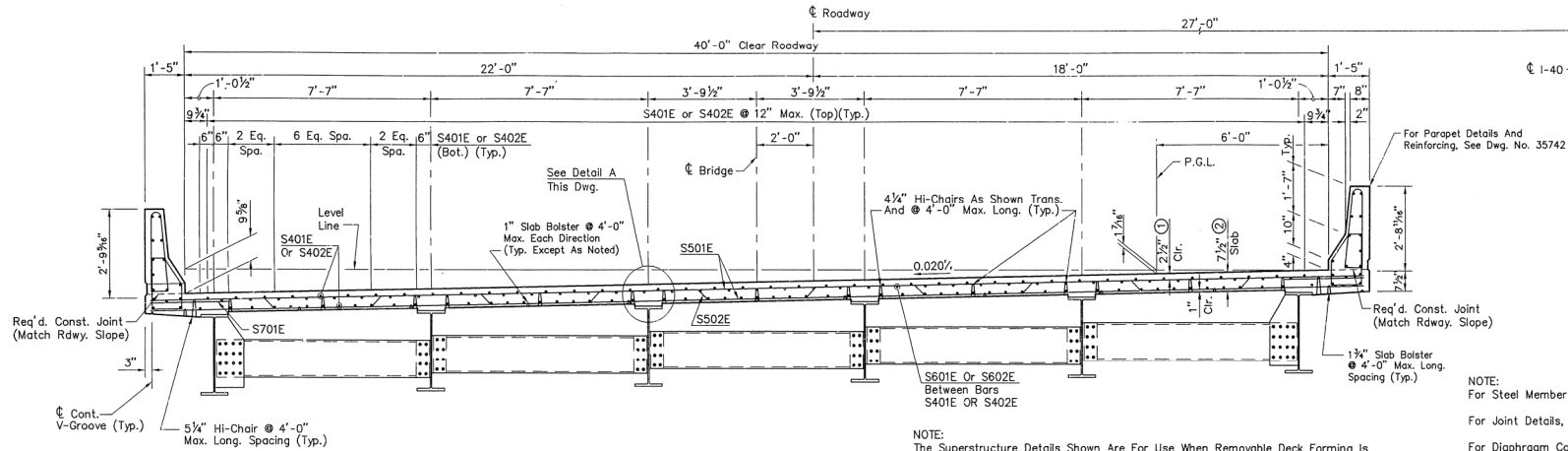


DATE REVISED	DATE FILMED	DATE REVISED	DATE FILMED	FED. ROAD NO.	STATE	FED. AID PROJ. NO.	SHEET NO.	TOTAL SHEETS
				6	ARK			
						JOB NO. R10085	60	92

3724 A & B - TYP. X-SEC. 35741



SLAB END DETAILS

NOTE: For Anchor Stud Details, See Dwg. No. 35747

NOTE: For Steel Member Sizes, See Dwg. Nos. 35737-35739 (Bridge 3724).

For Joint Details, See Dwg. No. 35747.

For Diaphragm Connection Details, See Dwg. No. 35746.

Class 1 Protective Surface Treatment Shall Be Applied To The Roadway Surface And To The Face And Top Of Parapet.

At The Contractors Option, In Lieu Of Providing Bars S502E, Two #5 Bars May Be Substituted With The Bars Epoxy Coated. Payment For Reinforcing Will Be Based On The Weight Of Bars S502E.

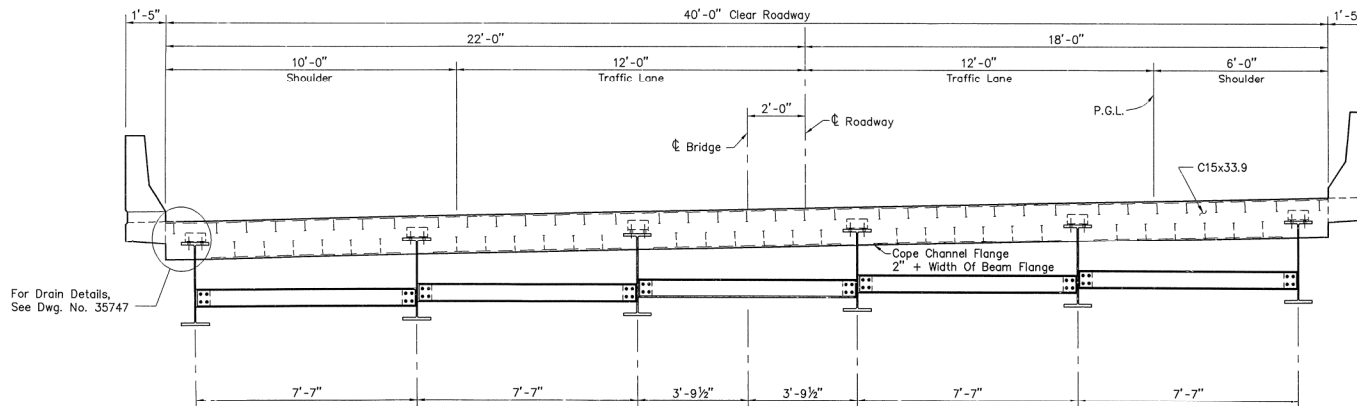
SLAB REINFORCING:

TRANSVERSE: S501E @ 12" In Top & Bottom
S502E @ 12" Bent Up Over Beams
S701E (See Plan For Placement)
LONGITUDINAL: S401E & 402E In Top (Placed As Shown - 12" Max. Spa.)
S401E & 402E In Bottom (Placed As Shown)
S601E or S602E In Top (Placed As Shown - 12" Max. Spa.) (Over Int. Supports)

TYPICAL SECTION

Scale: 1/2" = 1'-0"
Looking Ahead Bridge A
Bridge B Sym. About C-140

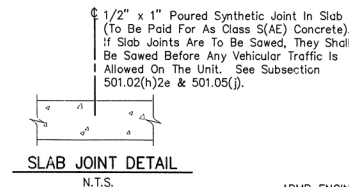
- ① Tolerance Minus: 1/4"
Plus: Equal To Amount Of Slab Thickening Used To Meet Slab Thickness Tolerance - See Typical Haunch Detail.
- ② Refer To Typical Haunch Detail



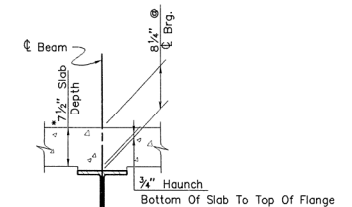
SECTION AT JOINT

Scale: 1/2" = 1'-0"
Looking Ahead Bridge A
Bridge B Symmetrical
About C-140

Note: Refer To Dwg. No. 35747
For Joint Details.



SLAB JOINT DETAIL
N.T.S.



DETAIL 'A'

Haunch Is Required. Slab May Be Thickened And/Or The Haunch Thickened To Maintain Slab Tolerance.

*Thickness As Detailed On Roadway Section. Tolerance Is Minus 1/4" And Plus 1/2".

Note: No Increase In Concrete And Structural Steel Quantities Will Be Made To Meet Slab Tolerances.

ENGSTROM/MODJESKI AND MASTERS
CONSULTING ENGINEERS

TYPICAL SUPERSTRUCTURE SECTION BRIDGES 3724 A & B

MONROE COUNTY
INTERSTATE ROUTE 40 SEC. 43
ARKANSAS STATE HIGHWAY COMMISSION
LITTLE ROCK, ARK.

DRAWN BY: DHM DATE: 11/96
CHECKED BY: MMW/GPS DATE: 4/97
DESIGNED BY: GPS DATE: 9/94

SCALE: 1/2" = 1'-0"

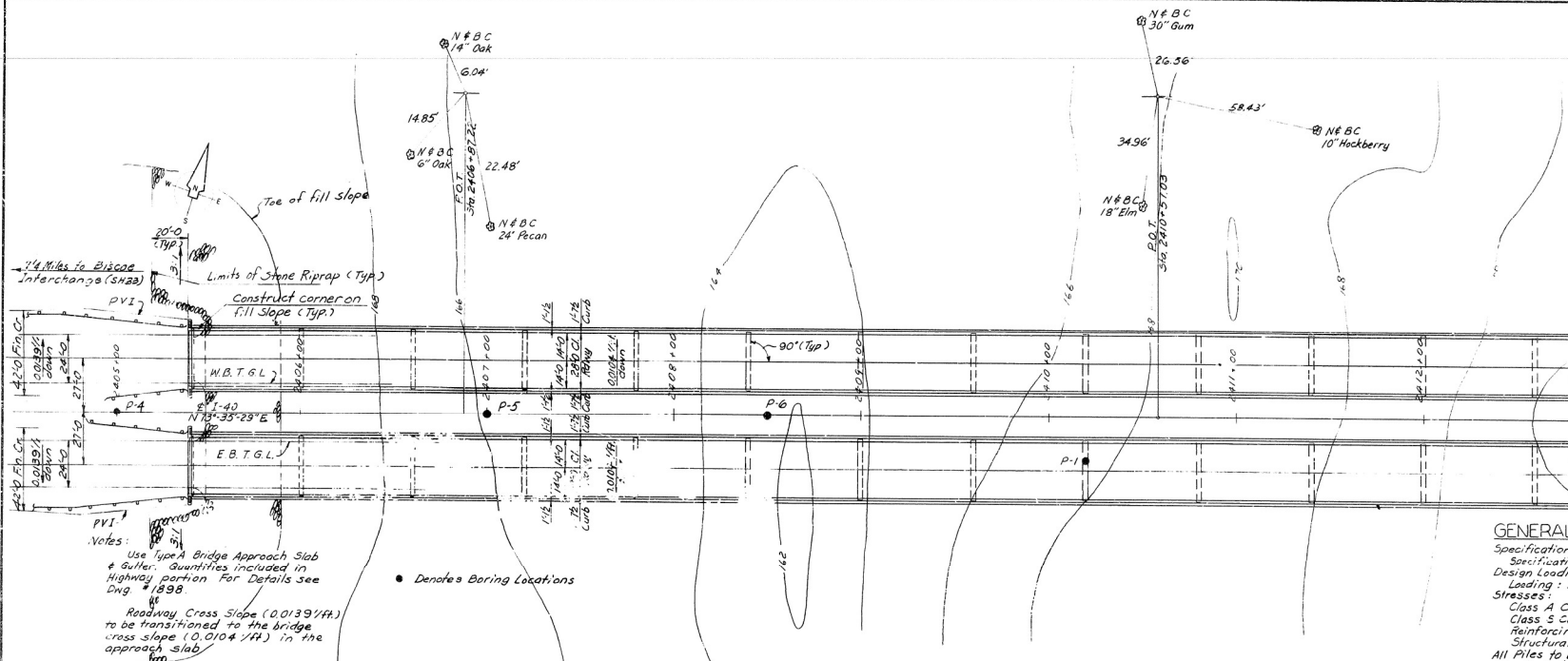
BRIDGE NO. 3724 - A & B

DRAWING NO. 35741

ABMB ENGINEERS, INC.

ACAD SCALE: 5" = 1"

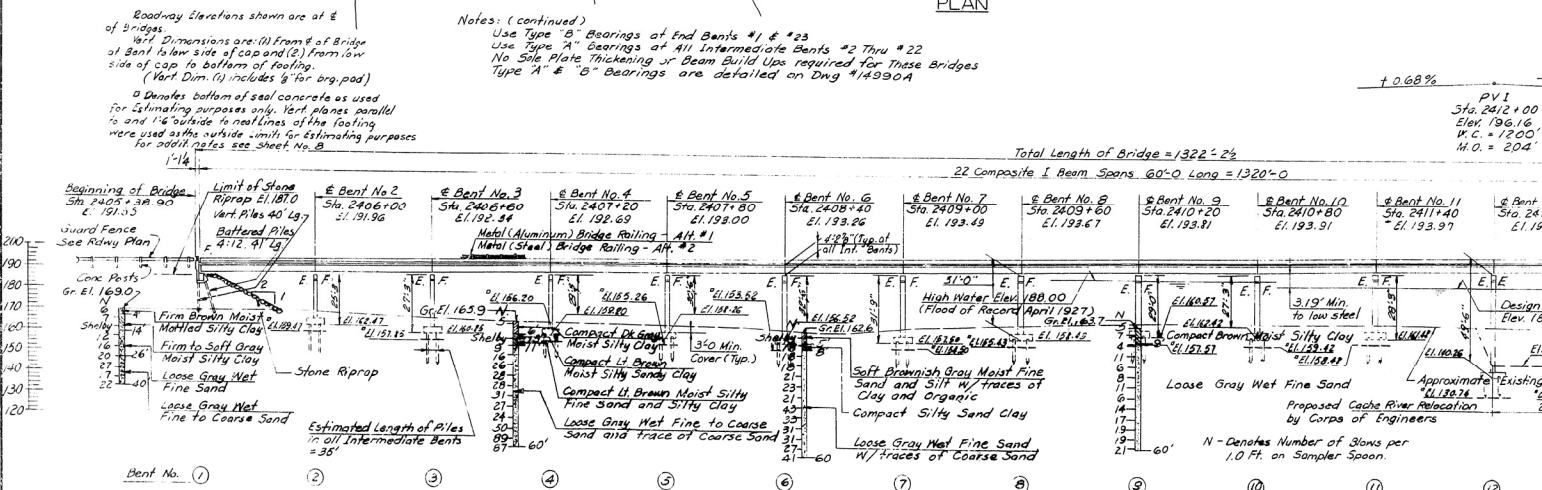
FED. ROAD DIST. NO.	STATE	FED. AID PROJ. NO.	FISCAL YEAR	SHEET NO.	TOTAL SHEETS
6	ARK.				
JOB NO.	R10055				37 92



PLAN

GENERAL NOTES

Specifications: Arkansas State Highway Commission Standard
 Specifications for Highway Construction adopted Dec. 9, 1939
 Design Loading: HS20 AASHTO 1981 # Special Interstate
 Loading: 2-24,000 lbs axles @ 4'-0" on centers
 Stresses:
 Class A Concrete: (n=15) 840 #/sq
 Class S Concrete: (n=10) 1200 #/sq
 Reinforcing Steel: 20,000 #/sq
 Structural Steel (A-36): 20,000 #/sq
 All Piles to be 16" Octagonal Precast Concrete Piles
 Piles in End Bents to be driven after the Embankment is in place.
 Lengths of Piling shown are for Estimating Purposes only
 actual lengths to be determined in the field
 All Piles to be driven to a minimum bearing of 36 ton/pile
 Drive one 40' test pile in Bents 2, 6, 10, 14 # 18 of Bridge #3724A
 and one 40' test pile in Bents 3, 7, 11, 15 # 19 of Bridge #3724B
 All piling to be driven with an approved air
 steam and diesel hammer



ELEVATION

- REFERENCES:
- 1) For Superstructure Details see Dwg. # 15050 Eri. & Dwg. # 14990A.
 - 2) For End Bent Details see Dwg. # 1900A.
 - 3) For Intermediate Bent Details see Dwg. # 3724-B & Dwg. # 3724-A.
 - 4) For Precast Concrete Pile Details see Dwg. # 2382.
 - 5) For Stone Riprap Details see Summary of Bridge Quantities - Sheet No. B.
 - 6) For Right of Way see Roadway Plans.

FOR INFORMATION ONLY

ARKANSAS STATE HIGHWAY COMMISSION
 LITTLE ROCK, ARKANSAS

INTERSTATE ROUTE 40 SECTION 4

LAYOUT OF BRIDGES
 OVER BAYOU DE VIEW - I

BRIDGE NO. 3724 A
 & 3724 B

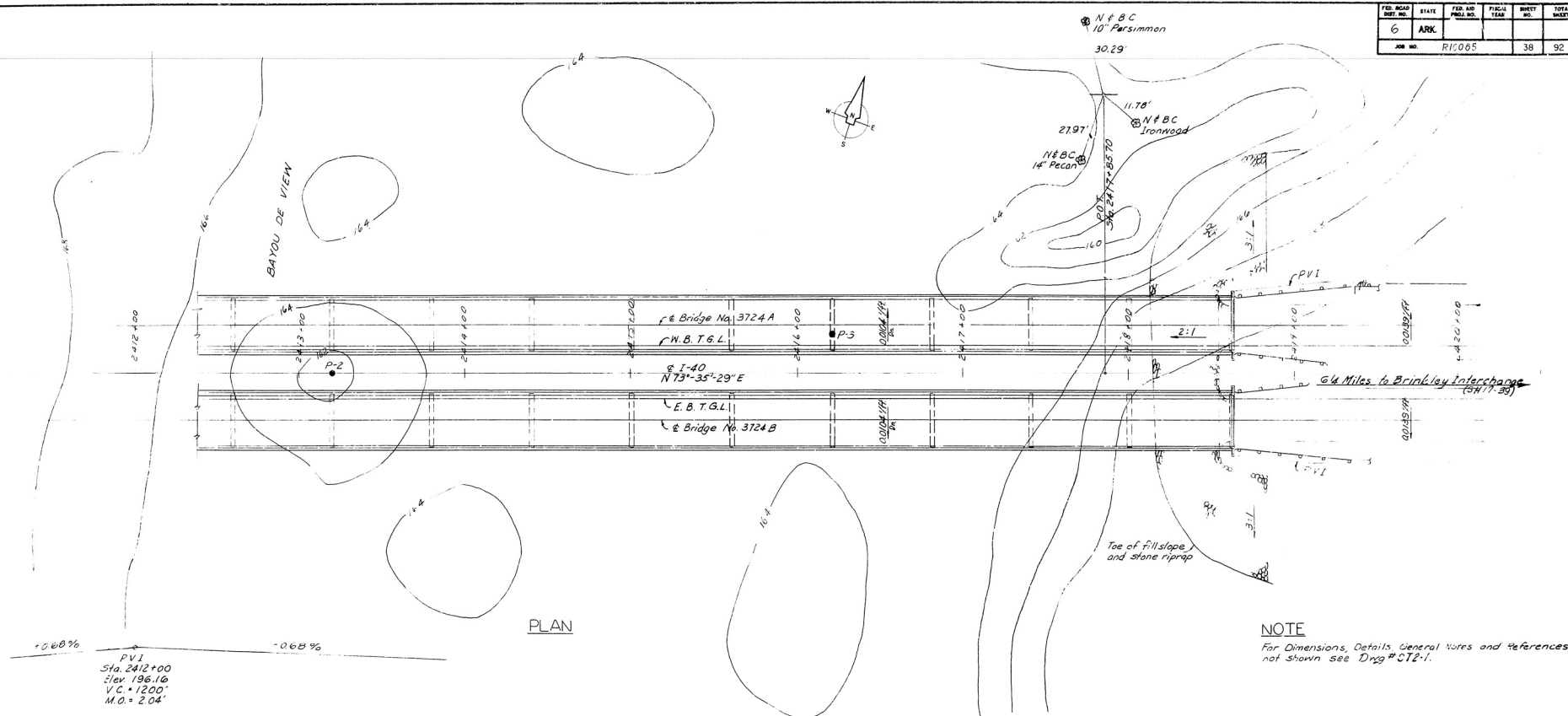
SCALE: 1"=30'-0"

DATE: _____

BLAUVELT ENGINEERING CO.
 CONSULTING ENGINEERS

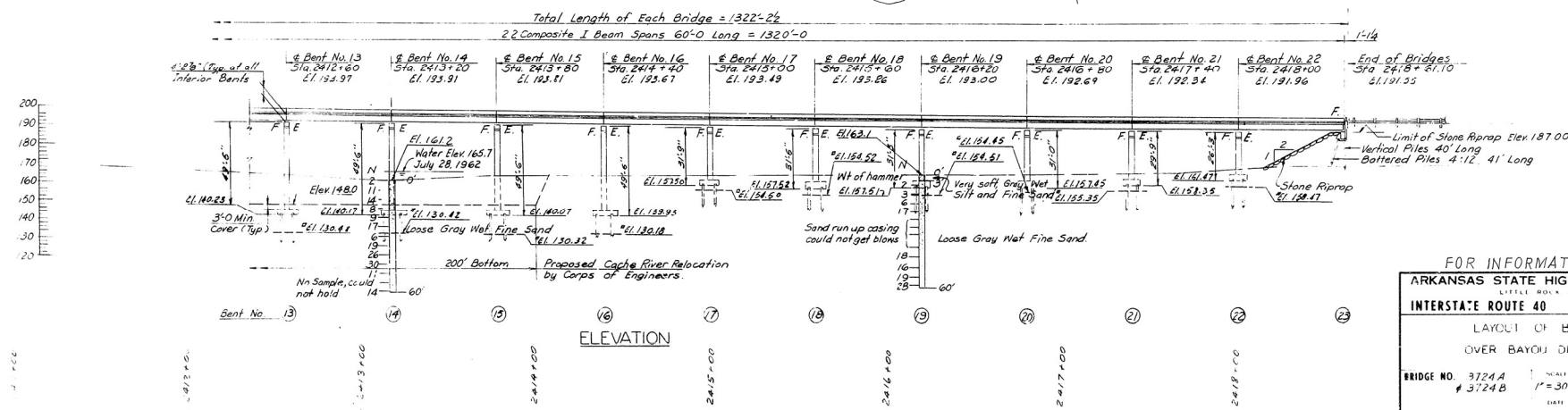
DRAWINGS NO. 372-1
 AHD12993-35718

FED. ROAD DIST. NO.	STATE	FED. AID PROJ. NO.	FISCAL YEAR	SHEET NO.	TOTAL SHEETS
6	ARK.			38	92
JOB NO. R10065					



PLAN

NOTE
For Dimensions, Details, General Notes and References not shown see Dwg. #C12-1.



ELEVATION

FOR INFORMATION ONLY

ARKANSAS STATE HIGHWAY COMMISSION
LITTLE ROCK, ARKANSAS

INTERSTATE ROUTE 40 SECTION 4

LAYOUT OF BRIDGES
OVER BAYOU DE VIEW - II

BRIDGE NO. 3724A
3724B

SCALE: 1" = 30'-0"

DATE: _____

BLAUVELT ENGINEERING CO.
CONSULTING ENGINEERS

DRAWING NO. ST2-2
AND 12994 35719