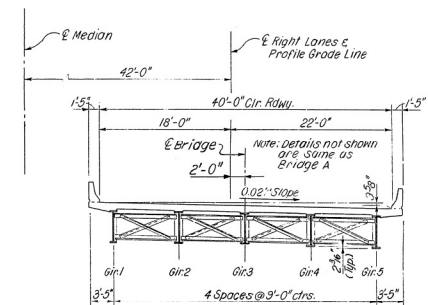
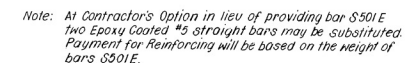
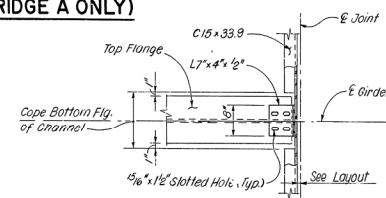


DATE REVISED	DATE FILMED	DATE REVISED	DATE FILMED	FED. NO. DIST. NO.	STATE	FED. AID PROJ. NO.	SHEET NO.	TOTAL SHEETS
				I	ARK			
				JOB NO.		R10089	45	87
				6518 A E B	1	TYP. SECTION	34366	



① *Tolerance:* Minus = 1/4"
Plus: Equal to amount of slab
thickening used to meet slab
thickness tolerance - See
"Adjustment for slab thickness
Tolerance"

(LOOKING AHEAD)
Scale: $1/2" = 1'-0"$

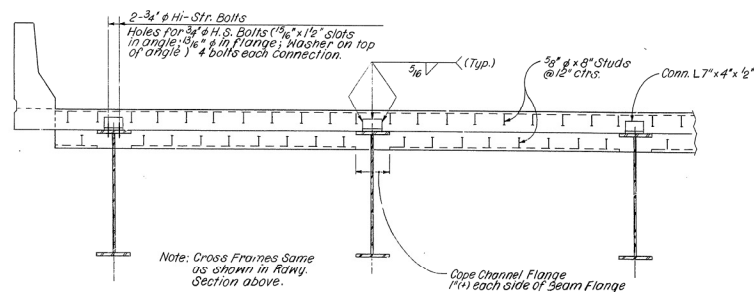


N.T.S.

INTERIOR BEAM

EXTERIOR BEAM

Note: Haunch is required. Slab thickness or haunch may be variable to achieve the plan grade. Tolerance for slab thickness is minus $\frac{3}{4}$ " and plus 1". Interior and exterior beam haunches may be increased to 1" greater than the dimension shown. No adjustment for increase in quantities will be made for thickening slab or deepening haunch



Roadway Channel C15 x 33.9
Connection Angle 7" x 4" x 1/2"
5/8" x 8" Studs @ 12" ctrs.

Note: Detail Device '8" high and provide '4" shims using 1-'8" Pl and 2-'16" Pl's.

N.T.S.

N.T. (S)

△ Revised for 1996 Specs KDH 8Aug 96

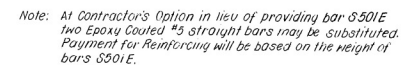
STATE OF
ARKANSAS
REGISTERED
PROFESSIONAL
ENGINEER
No. 6958
JOHN C. MACKIE

DRAWN BY: M.C. DATE: 4-16-93
 TRACED BY: M.J. DATE: 4-23-93 SCALE: As Shown
 CHECKED BY: L.S. DATE: 4-28-93

BRIDGE NO. 6518 A & B DRAWING NO. 34366

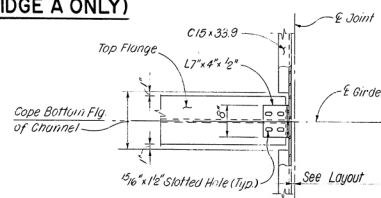
DATE REVISED	DATE FILMED	DATE REVISED	DATE FILMED	FEB NO DIST NO	STATE	FEB AID PROJ NO	SHEET NO	TOTAL SHEETS
				1	ARK.			
				JOB NO		R10089	55	87

6518 A E B TYP. SECTION 34376

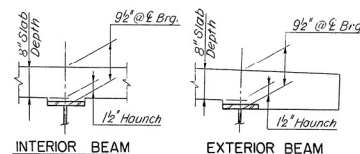


① *Tolerance:* Minus = $\frac{1}{4}$ "
Plus: Equal to amount of slab
thickening used to meet slab
thickness tolerance - see
"Adjustment for slab thickness
Tolerance"

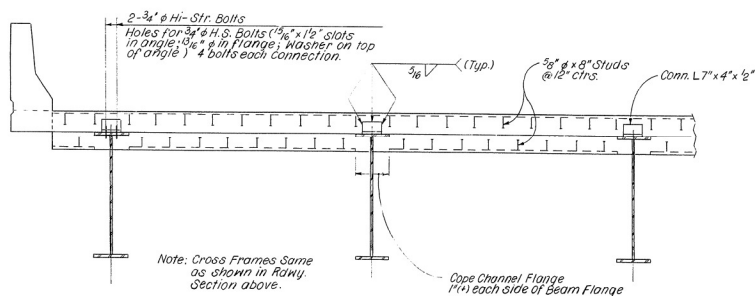
(LOOKING AHEAD)
Scale: $\frac{1}{2}'' = 1'-0''$



M.T.S.



Note: Haunch is required. Slab thickness or haunch may be variable to achieve the plan grade. Tolerance for slab thickness is minus 1/4" and plus 1". Interior and exterior beam haunches may be increased to 1" greater than the dimension shown. No adjustment for increase in quantities will be made for thickening slabs or deepening haunch.



PART RDWY. SECTION AT END OF UNIT
N.T.S.

EXPANSION DEVICE
Roadway Channel C15 x 33.9
Connection Angle 7" x 4" x 1/2"
5/8" x 8" Studs @ 12" ctrs.

Note: Detail Device 1/8" high and provide 1/4" shims using 1-1/2" Pl. and 2-1/2" Pl's.

ADJUSTMENT FOR SLAB THICKNESS TOLERANCE

N. T. S.

▲ Revised Job no., L.M., 10-26-95
 ▲ Revised for 1996 Specs KDH 8Aug96



STATE OF
ARKANSAS
REGISTERED
PROFESSIONAL
ENGINEER
No. 6958
JOHN C. MACKIE

SHEET 1 OF 5
DETAILS OF
170'- 0" CONT. COMP. PL. GIRDER UNITS
BRIDGE A & B

ROUTE 40 SEC. 51
ARKANSAS STATE HIGHWAY AND
TRANSPORTATION DEPARTMENT
LITTLE ROCK, ARK.

DRAWN BY: M.C. DATE: 4-30-93
 TRACED BY: A.J. DATE: 5-4-93 SCALE: As Shown
 CHECKED BY: I.S. DATE: 5-20-93

BRIDGE NO. 6518 A & B DRAWING NO. 34376

