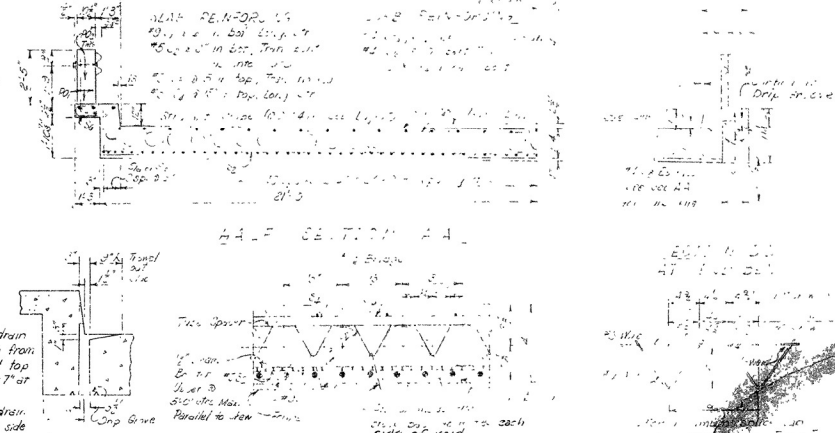
[illegible]

TYPE PLASTIC DEED
2010-1-1-6'

[illegible]

DETAILS OF STANDARD
25' P.C. SLAB SPAN WITH VOID
40' CLEAR ROADWAY - 10' GUTTER
10', 20' AND 30' SKIN (12' W.)
ROUTE SEC.
ARKANSAS STATE HIGHWAY COMMISSION
LITTLE ROCK, ARK.
DRAWN BY *W.H.* DATE *7-6-56*
TRACED BY *W.H.* DATE *7-6-56*
CHECKED BY *W.H.* DATE *7-6-56*
SCALE $\frac{1}{4}'' = 1'-0''$
BRIDGE NO. *143* DRAWING NO. *143-56*
File as drawing No. 143-56

| FED. ROAD NO. | STATE | FED. AID PROJECT NO. | FISCAL YEAR | SHEET NO. | TOTAL SHEETS |
|---------------|-------|----------------------|-------------|-----------|--------------|
| 6 | ARK. | 2-40-1-10 | 1962 | 15 | 61 |
| JOB NO. | | 11662 | | | |

Right of Way Data:
See Location Sketch on
Layout of Br. No. 3732A

Curve Data - Median

$\Delta = 14^\circ 12' 12''$ Rt.
 $D = 6^\circ 30'$
 $L = 1427.4'$
 $R = 2840.0'$
 $PC = Sta. 2560+30.0$

6" Smooth Cast Iron
5' 5" Od.

Type X Curb & Gutter
at Bridge Ends
See Roadway Plans &
Dwg. 1878A.

Note:
Construct Bridge on a chord
through Bridge Ends.

TEST
HOLE

0.54 Mi. to St. Francis Co. Line

PLAN

For Location Sketch See Br. No. 3732A, Dwg. No. 12924.

GENERAL NOTES

All concrete to be poured in the dry. Exposed corners to be chamfered 3/4" unless otherwise noted.

All piling shall be 18" octagonal precast concrete and shall be driven with an approved air, steam or diesel hammer to a minimum bearing capacity of 38 tons per pile, and to a minimum penetration of 20 feet below the ground line. Lengths of piling shown are assumed for estimating quantities only. Actual lengths to be determined in the field. Drive one 40' test pile in Bent No. 2 of Bridge No. 3732A, and one 40' test pile in Bent No. 2 of Bridge No. 3732B.

Piles in End Bents shall be driven after embankment is in place.

For Details of Bents see Drawing No. 543201.

For Details of RC Slab Spans see Drawing No. 543203.

For Details of Precast Piling see Drawing 7382.

SPECIFICATIONS: Arkansas State Highway Commission Standard Specifications for Highway Construction, Edition of 1959, and designated Special Provisions.

DESIGN SPECIFICATIONS AASHTO 1961
Live Loading: H20-S18 and special Interstate Loading of two 24,000 lb axles spaced 4'0" on center
Unit Stresses: Class 3 Concrete (f_c=4000) 1,200 psi
Reinforcing Steel 20,000 psi

RIGHT LANES LAYOUT OF BRIDGE OVER PINEY DITCH

HWY. 17 INTERCHANGE - ST. FRANCIS COUNTY LINE
MONROE COUNTY

INT. ROUTE 40 SEC.

ARKANSAS STATE HIGHWAY COMMISSION

LITTLE ROCK, ARK.

DRAWN BY: J.P.H. DATE: 6-27-62

TRACED BY: J.P.H. DATE: 6-18-63

CHECKED BY: J.P.H. DATE: 6-18-63

BRIDGE NO. 3732 B

DRAWING NO. 12425

J.P.H.
BRIDGE ENGINEER

ELEVATION

$\Delta A = 6.5$ Sp. Mi.

$C = 0.2$

B.M. N.F. 18" Pin Oak on d
Sta. 2565+34 Elev. 188.61

BENT NO. ①

②

③

7 piles @ 30' each, End Bent
Bent piles
2, 4, 5, 6 18" x 18"

Bent
21' x 21' (20' x 20')
Water Elev. 183.7 (5' x 6' 2")
7 Piles @ 35' Bent 2

HW Elev. 188.3
1937

Steel (10 #4) or Aluminum (2.156")
Plate Guard Bridge Railing

Sta. 2565+74
42' RL Elev. 188.2

0-4' Firm Gray
Sandy Clay Moist

1'-16" Firm Brown
Sandy Clay Moist

16'-21' Med. Firm
Brown Sandy Clay Wet

17'-38' Med Firm
Gray Sandy Clay Moist

38'-60' Comp. Fine
Gray Water Bearing Sand

200
180
160
140

200
180
160
140