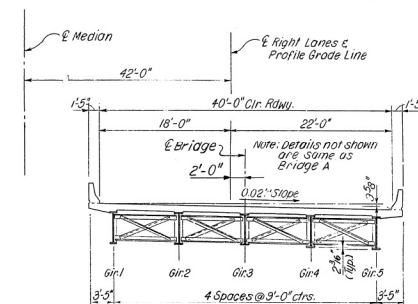
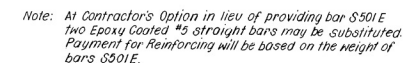


DATE REVISED	DATE FILED	DATE REVISED	DATE FILED	FED. REG. DIST. NO.	STATE	FED. AID PROJ. NO.	SHEET NO.	TOTAL SHEETS
				1	ARK			
				JOB NO.		R10089	45	87

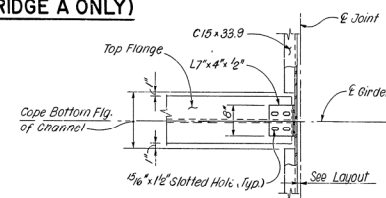
6518 A & B TYP. SECTION 34366



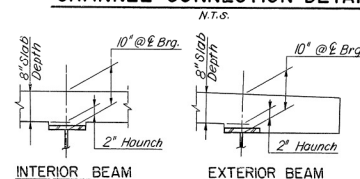
TYPICAL RDWY. SECTION (BRIDGE B ONLY)

(LOOKING AHEAD)
Scale: $1/2" = 1' - 0"$

(LOOKING AHEAD)
N.T.S.



CHANNEL CONNECTION DETAIL



Note: Haunch is required. Slab thickness or haunch may be variable, to achieve the plan grade. Tolerance for slab thickness is minus $\frac{3}{4}$ " and plus 1". Interior and exterior beam haunches may be increased to 1" greater than the dimension shown. No adjustment for increase in quantities will be made for thickening slab or deepening haunch



Roadway Channel C15 x 33.9
Connection Angle 7" x 4" x 1/2"
5/8" x 8" Studs @ 12" ctrs.

Note: Detail Device '8" high and provide '4" shims using 1-'8" Pl and 2-'16" Pl's.

PART RDWY. SECTION AT END OF UNIT

ADJUSTMENT FOR SLAB THICKNESS TOLERANCE

⚠ Revised Job no., L.M. 10-26-95

⚠ Revised for 1996 Specs KDH 8Aug96

SHEET 1 OF 5
DETAILS OF
210'- 0" CONT. COMP. PL. GIRDER UNITS
BRIDGE A & B

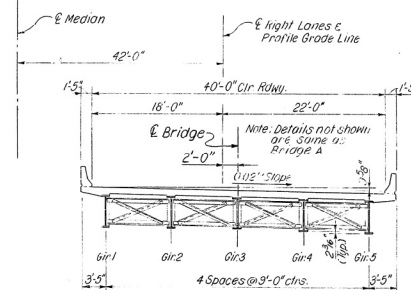
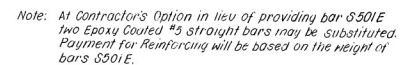
ROUTE 40 SEC. 51
ARKANSAS STATE HIGHWAY AND
TRANSPORTATION DEPARTMENT
LITTLE ROCK, ARK.

DRAWN BY: M.C. DATE: 4-16-93
 TRACED BY: K.J. DATE: 4-23-93 SCALE: As Shown
 CHECKED BY: L.S. DATE: 4-28-93

BRIDGE NO. 6518 A & B DRAWING NO. 34366

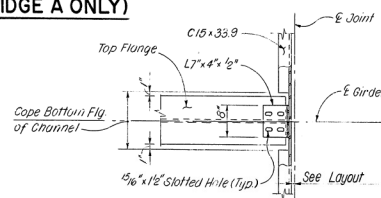
DATE REVISED	DATE FILMED	DATE REVISED	DATE FILMED	FED. REG. DIST. NO.	STATE	FED. AID PROJ. NO.	SHEET NO.	TOTAL SHEETS
				1	ARK.			
				JOB NO.		R10089	55	87

6518 A E B TYP. SECTION 34376

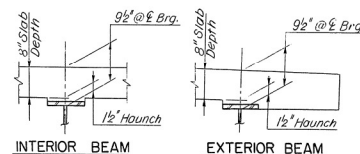


① *Tolerance:* Minus = $\frac{1}{4}$ "
Plus: Equal to amount of slab
thickening used to meet slab
thickness tolerance - see
"Adjustment for slab thickness
Tolerance"

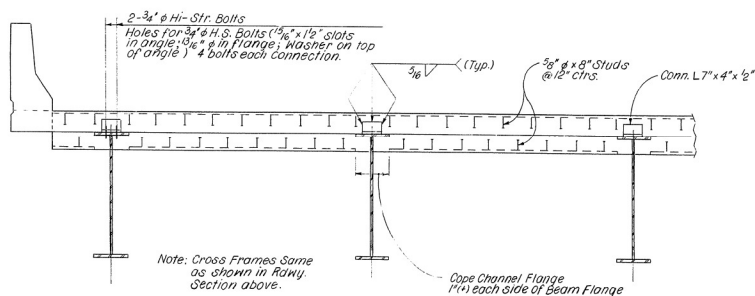
(LOOKING AHEAD)
Scale: $\frac{1}{2}'' = 1'-0''$



M.T.S.



Note: Haunch is required. Slab thickness or haunch may be variable to achieve the plan grade. Tolerance for slab thickness is minus 1/4" and plus 1". Interior and exterior beam haunches may be increased to 1" greater than the dimension shown. No adjustment for increase in quantities will be made for thickening slab or deepening haunch.



N.T.S.

EXPANSION DEVICE
Roadway Channel C15 x 33.9
Connection Angle 7" x 4" x 1/2"
5/8" x 8" Studs @ 12" ctrs.

Note: Detail Device 1/8" high and provide 1/4" shims using 1-1/2" Pl. and 2-1/2" Pl's.

N. T. S.

▲ Revised Job no., L.M., 10-26-95
 ▲ Revised for 1996 Specs KDH 8Aug96

SHEET 1 OF 5
DETAILS OF
170'-0" COMP. PL. GIRDER UNITS
BRIDGE A & B

ROUTE 40 SEC. 51
ARIZONA STATE HIGHWAY AND
TRANSPORTATION DEPARTMENT
LITTLE ROCK, ARK.

STATE OF
ARIZONA
REGISTERED
PROFESSIONAL
ENGINEER
No. 6660

DRAWN BY: M.C. DATE: 4-30-93
 TRACED BY: M.U. DATE: 5-4-93 SCALE: AS SHOWN
 CHECKED BY: L.S. DATE: 5-20-93

BRIDGE NO. 6518 A & B DRAWING NO. 34376

DRAWN BY: W.P. DATE: 5-10-93
 TRACED BY: S.K. DATE: 5-24-93 SCALE: 1" = 20'-0"
 CHECKED BY: L.S. DATE: 5-28-93

BRIDGE NO. 6518 A 8 B DRAWING NO. 3435C