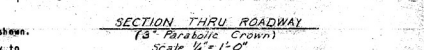
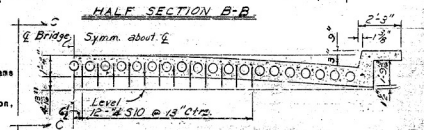
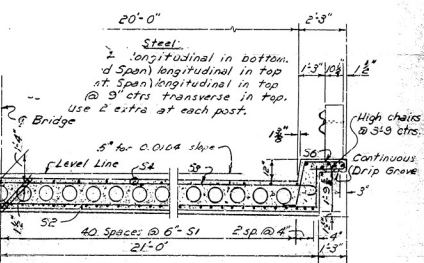
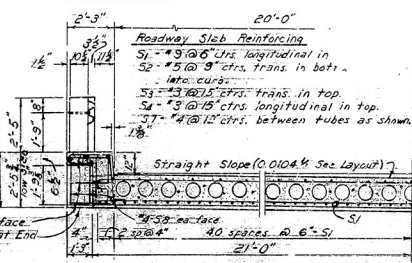
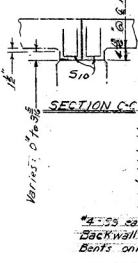
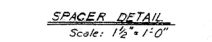
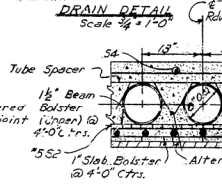


Dimensions are to ctrs of bars.
Pay Items "3" Parabolic Cr. only



Revision: S₁ bar & high chair location 285 4-25-63
284 4-25-63

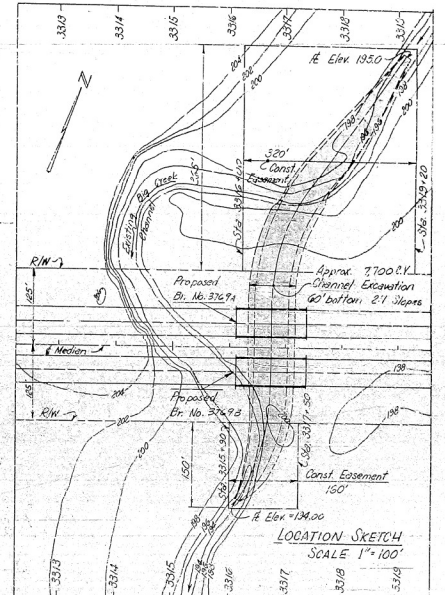
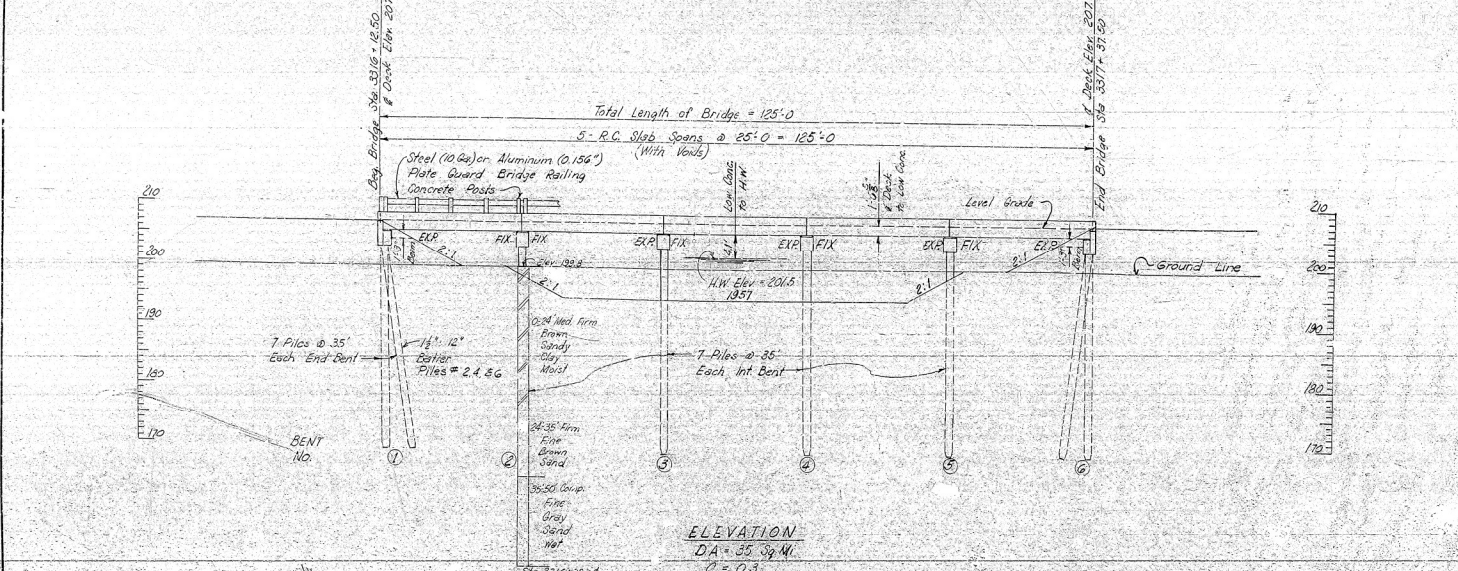
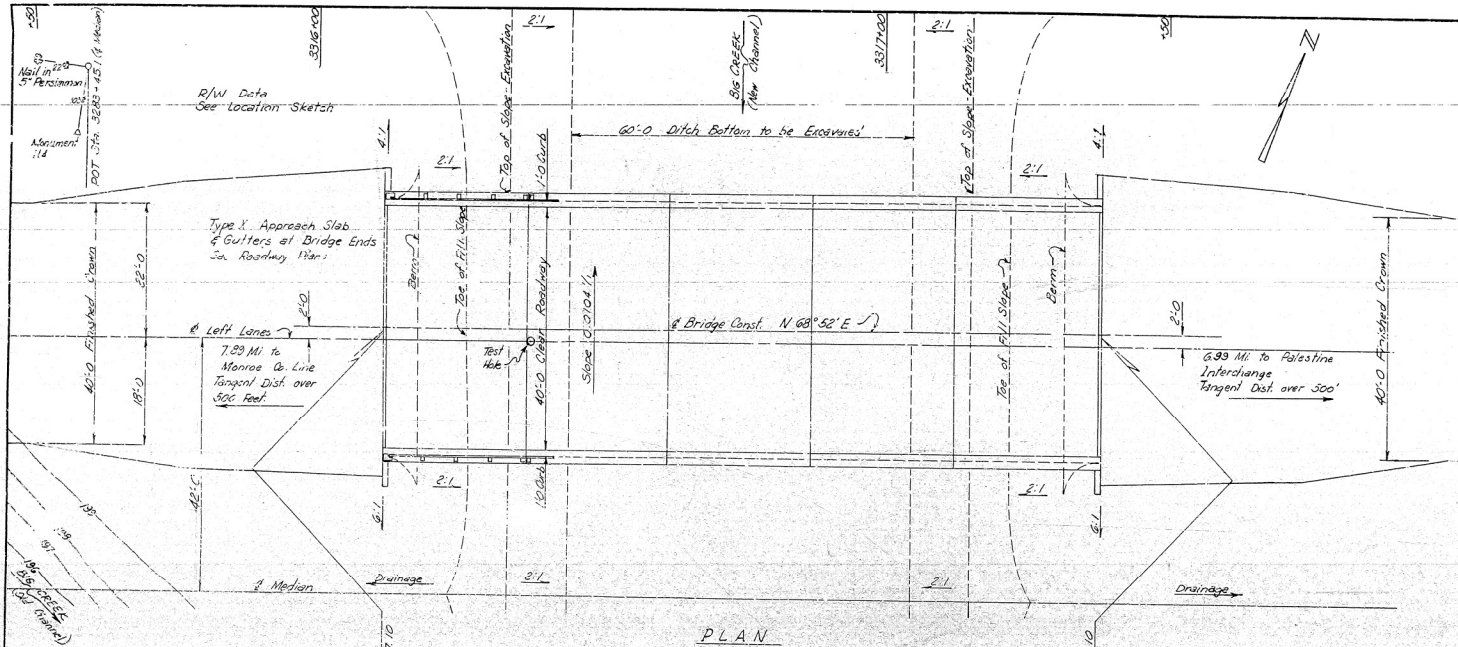
DETAILS OF STANDARD
25'-0" R.C. SLAB SPANS (WITH
VOIDS)

40'-0" CLEAR ROADWAY 2 CURBS at 1'-0"
ROUTE SEC.

ARKANSAS STATE HIGHWAY COMMISSION
LITTLE ROCK, ARK.
DRAWN BY: VAS DATE: 4-24-68

DESIGNED BY: _____ DATE: _____ SCALE: $1/2" = 1'-0"$ or as noted
 TRACED BY: _____ DATE: _____
 CHECKED BY: FRE DATE: 4-26-68
 BRIDGE NO. _____ DRAWING NO. 5432C2

FED. ROAD NO.	STATE	FISCAL YEAR	TOTAL PROJECT	SHEET NO.	TOTAL SHEETS
6	ARK.	1963	11663	30	196
JOB NO.					



For General Notes See Layout Br. No. 37693, Dwg. No. 12367

LEFT LANES
LAYOUT OF
BRIDGE OVER BIG CREEK
MONROE CO. LINE-GOODWIN
ST. FRANCIS COUNTY
INT. ROUTE 40, SEC. 3
ARKANSAS STATE HIGHWAY COMMISSION

LITTLE ROCK, ARK.
DRAWN BY: [Signature] DATE: 6-23-62
CHECKED BY: [Signature] DATE: 3-28-63
BRIDGE NO. 37694 DRAWING NO. 12366