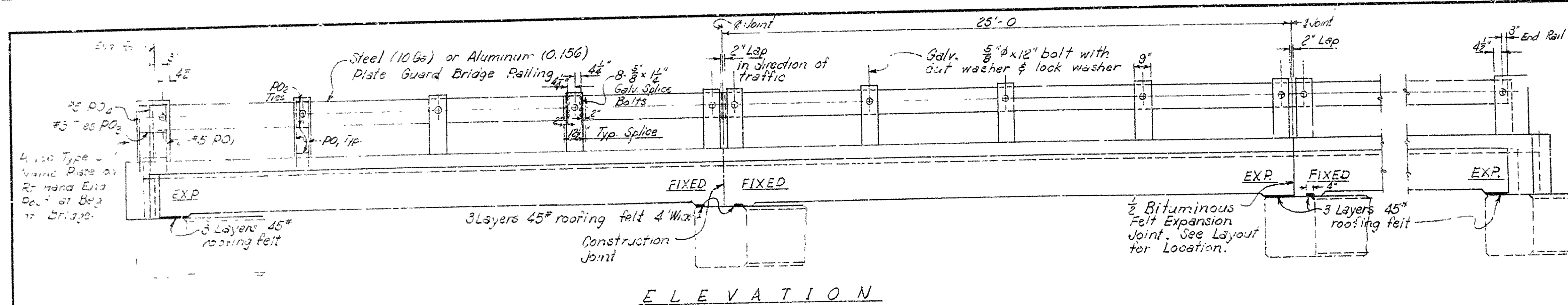


FED. ROAD NO.	STATE	FED. AID PROJECT	FISCAL YEAR	SHEET NO.	TOTAL SHEETS
6	ARK.				
JOB NO.					

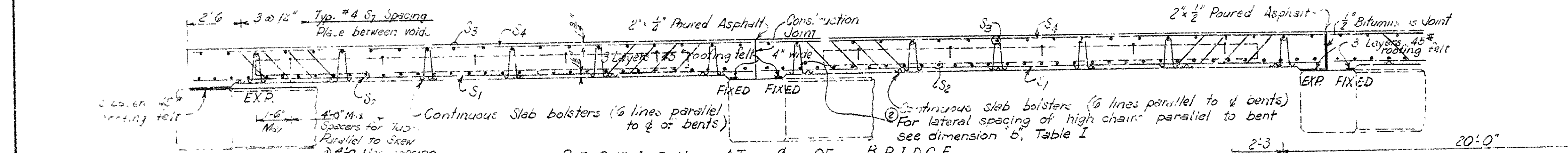
BAR LIST

Dimensions are to cts of bars.

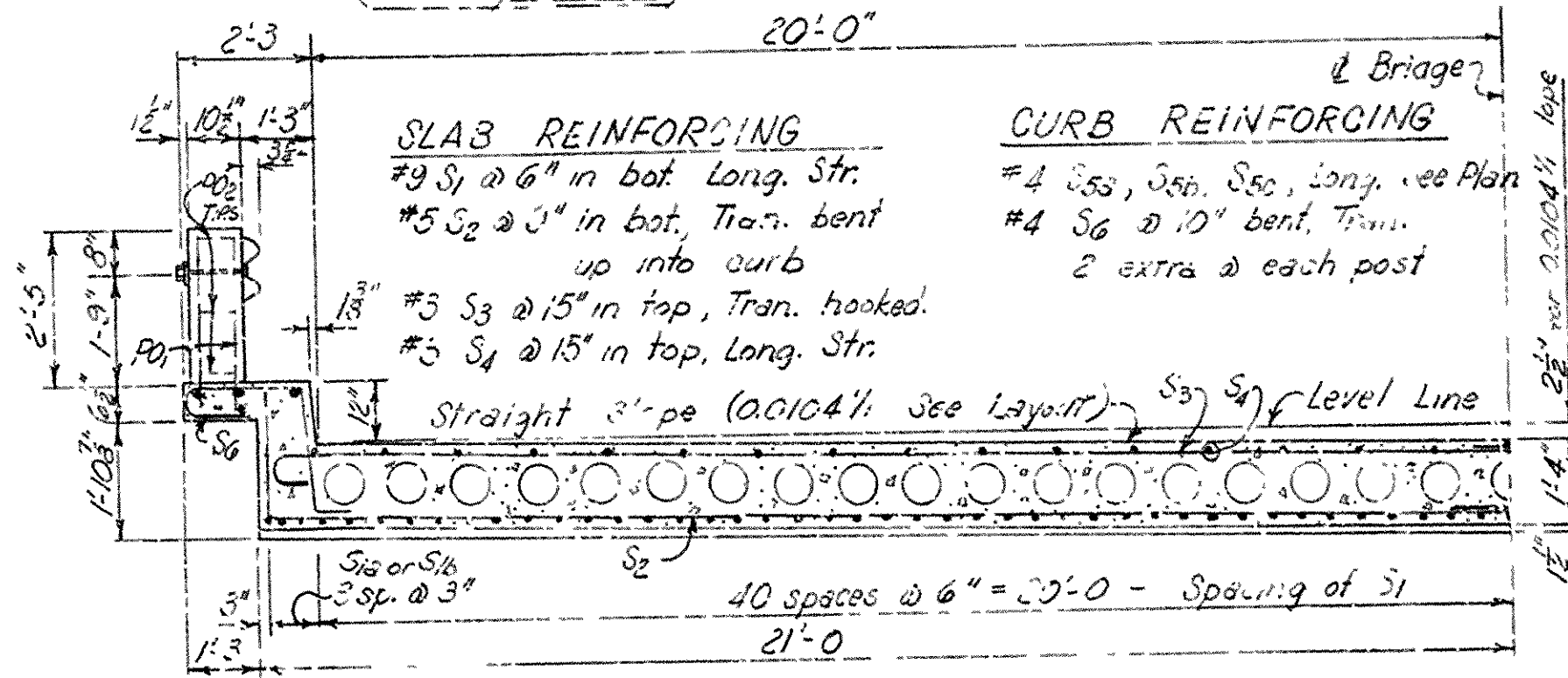
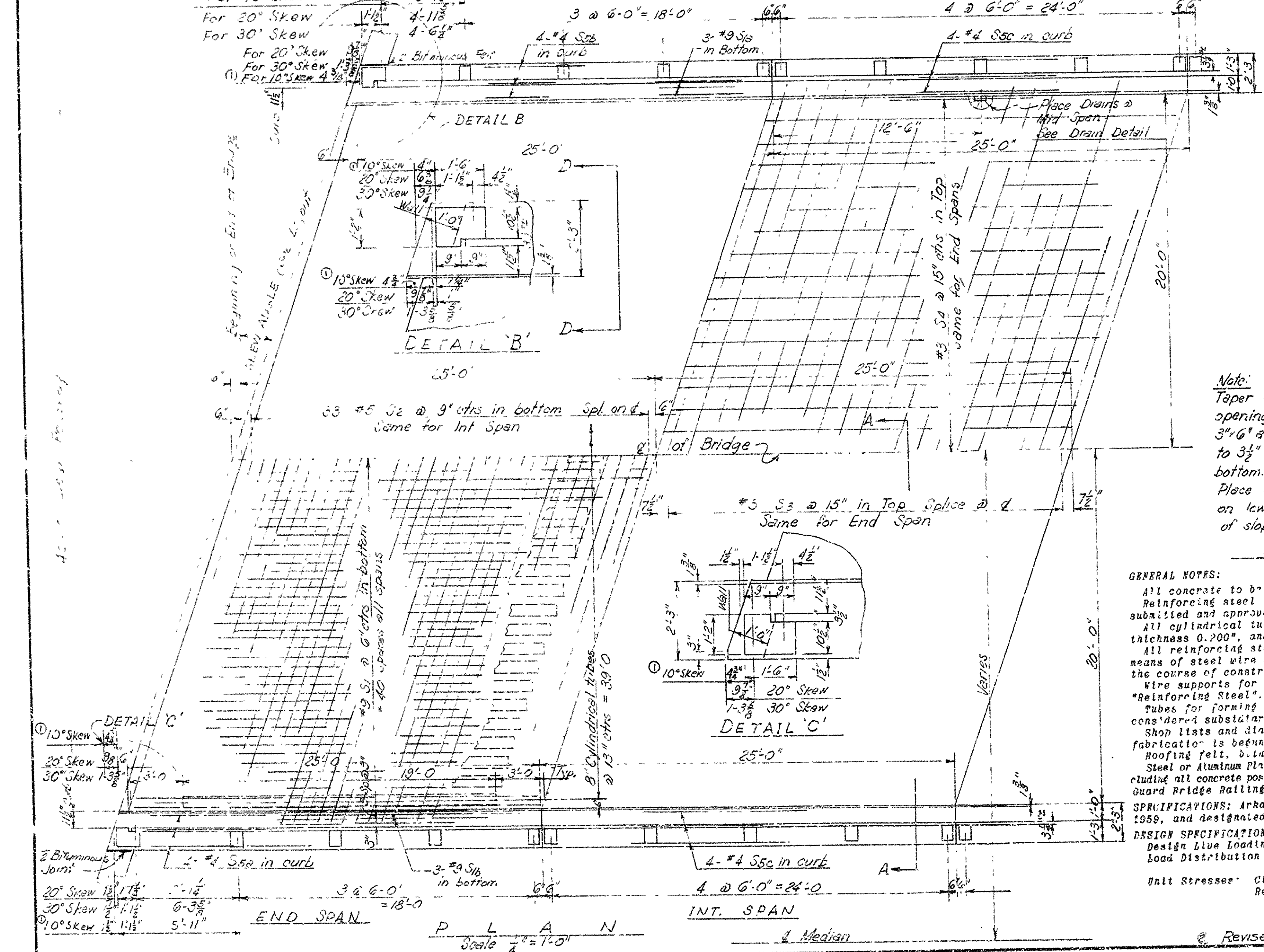
MARK	SIZE	NUMBER REQUIRED PER SPAN	LENGTH				BENDING DIAGRAMS
			END SPAN	INT. SPAN	10° SKEW	20° SKEW	
S ₁	#9	81	87	24-7	24-7	24-7	
S ₂	#5	66	66	24-2	25-3	27-1	
S ₃	#3	40	40	22-9	23-3	25-1	
S ₄	#3	33	33	24-7	24-7	24-7	
S _{5a}	#4	4		25-4	25-3	25-4	
S _{5b}	#4	4		24-11	24-5	24-0	
S _{5c}	#4			24-8	24-8	24-8	
S ₆	#4	78	80	6-6	6-6	6-6	
S ₇	#4	288	288	2-9	2-9	2-9	
S ₈	#4	18		2-0	2-0	2-0	
PO ₁	#5	13	20	5-10	5-10	5-10	
PO ₂	#3	24	36	2-8	2-8	2-8	
PO ₃	#2	6		4-8	4-8	4-3	
PO ₄	#5	4		6-2	6-2	6-2	
S _{1a}	#9	3		24-10	24-10	24-10	
S _{1b}	#9	3		25-5	25-5	25-5	



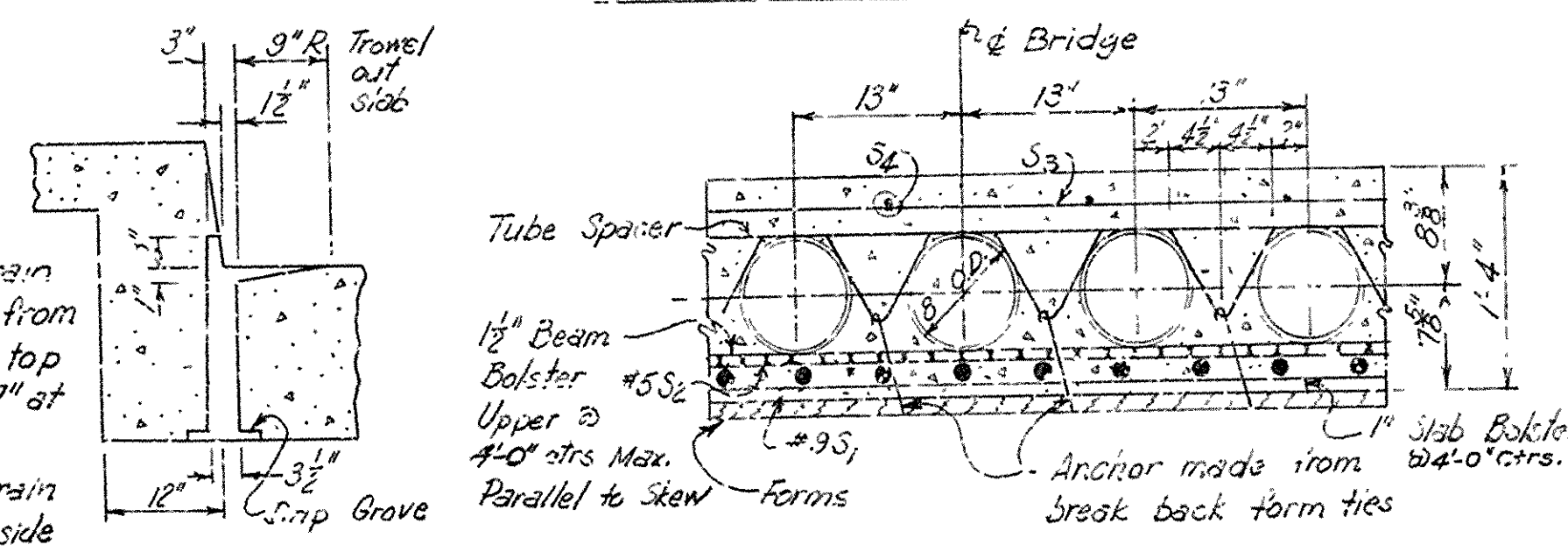
ELEVATION



SECTION AT Q OF BRIDGE



HALF SECTION A-A



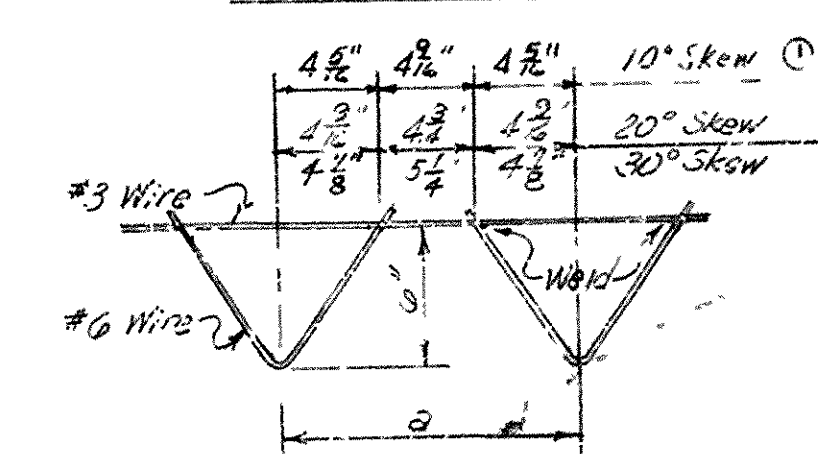
TUBE PLACING DETAIL

DRAIN DETAIL

Note: Taper drain opening from 3\"/>

GENERAL NOTES:
 All concrete to be Class S. All exposed corners to be chamfered 3/4\"/>

SECTION D-D AT END BENT



For minimum splice lap see dimension 'a' Table I

SPACER DETAIL

TABLE I
Scale 1 1/2\"/>

Skew	a	b
10°	1-13/16	3-3 1/2
20°	1-1 1/2	2-5 3/8
30°	1-3	3-9

DETAILS OF STANDARD
 25'-0\"/>

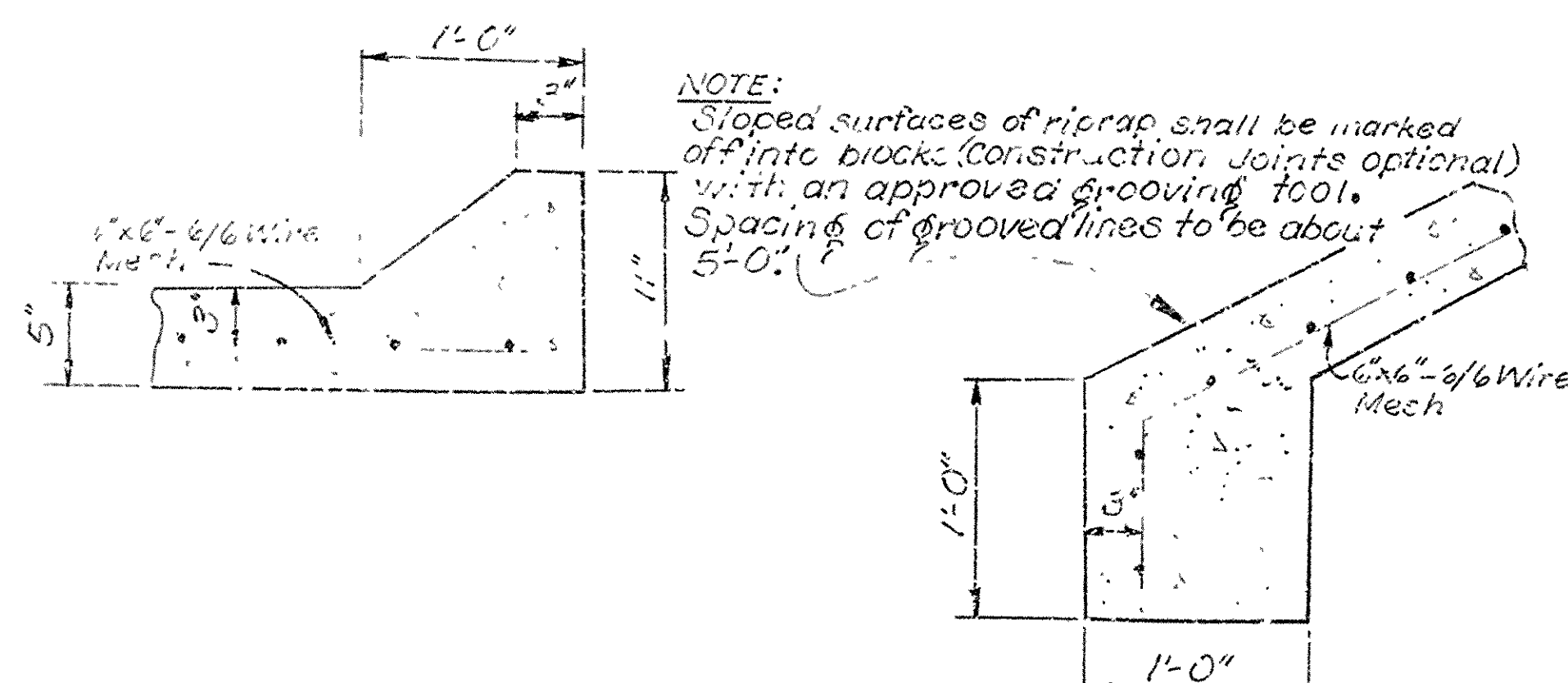
ROUTE SEC.
ARKANSAS STATE HIGHWAY COMMISSION
 LITTLE ROCK, ARK.

DRAWN BY: *RHS* DATE: 7-6-62
 TRACED BY: *gms* DATE: 8-1-62
 CHECKED BY: *gms* DATE: 8-1-62
 BRIDGE NO. *3452-03* DRAWING NO. *3452-03*

Revised to include 10° Skew A.N. 2-26-63 CHK MEW
 Revised Bar supports RHS 4-25-63 CHL FCB 4-26-63-7-63

SCHEDULE OF BRIDGE QUANTITIES

NAME FLATE TITLE		BRIDGE NO.	COLL. NO.	ITEM NUMBER		801	SP#802	SP#802	803	SP#804	SP#804	SP 804-6	SP#805(ALT.#1) 805(ALT.#2)	805(ALT.#1) SP805-7(ALT.#2)	SP#806	812	SP#817	
				ITEM	COMMON EXCAVATION FOR STRUCTURES	CLASS A CONCRETE	CLASS S CONCRETE	REINFORCING STEEL	PRECAST CONCRETE PILING (16" OCT.)	BEARING PILING (16")	PROVIDING EQUIPMENT FOR DRIVING TEST PILES	METAL (ALUMINUM) BRIDGE RAILING (ALTERNATE NO.1) METAL (STEEL) BRIDGE RAILING (ALTERNATE NO.2)	STEEL PLATE GUARD BRIDGE RAILING (ALTERNATE NO.1) ALUMINUM PLATE GUARD BRIDGE RAILING (ALTERNATE NO.2)	STRUCTURAL STEEL IN BEAM SPANS (A36)	BRIDGE NAME PLATES (TYPE C)	CONCRETE RIPRAP		
				OF BRIDGE	UNIT	CU. YD.	CU. YD.	CU. YD.	LB.	LIN. FT.	LIN. FT.	COMPLETE ITEM	LIN. FT.	LIN. FT.	LB.	PLATE	CU. YD.	
ST. LOUIS SOUTH RIVER	3731A	X171	END BENTS 1 & 6		80			29.86	3875		630							
			BENTS 2 & 5		263	54.38	20.24	8371		600								
			BENTS 3 & 4		104	74.77	20.24	8957		605	25%					1460	1	80
			TWO-40'-0" COMP. I-BM. SPANS (MOD.)				65.30	14,260										
			ONE-88'-0" COMP. I-BM. SPAN (REG.)				69.53	15,580								53284		
			TWO-45'-0" COMP. I-BM. SPANS (MOD.)				73.25	16,004								119,068		
			TOTALS FOR BR. NO. 3731A		447	129.15	278.42	67,047		1835	25%	515.6				237,210	1	80
			END BENTS 1 & 6		80		29.86	3875		630						1460	1	80
			BENTS 2 & 5		263	54.38	20.24	8371		600								
			BENTS 3 & 4		104	74.77	20.24	8957		605	25%							
ST. LOUIS SOUTH RIVER	3731B	X171	TWO-40'-0" COMP. I-BM. SPANS (MOD.)				65.30	14,260					159.8		53284			
			ONE-88'-0" COMP. I-BM. SPAN (REG.)				69.53	15,580						176.0		119,068		
			TWO-45'-0" COMP. I-BM. SPANS (MOD.)				73.25	16,004						179.8		63,398		
			TOTALS FOR BR. NO. 3731B		447	129.15	278.42	67,047		1835	25%	515.6			237,210	1	80	
FINNEY CREEK	3732A	X020	BENTS 1 & 3		50		20.78	3042	420									
			BENT NO. 2				9.64	1549	250		25%							
			TWO-25'-0" RC. SLAB SPANS				93.36	21,412						100.7		1		
			TOTALS FOR BR. NO. 3732A		50		123.78	26,003	670		25%			100.7		1		
			BENTS 1 & 3		50		20.78	3042	420									
			BENT NO. 2				9.64	1549	250		25%							
			TWO-25'-0" RC. SLAB SPANS				93.36	21,412						100.7		1		
			TOTALS FOR BR. NO. 3732B		50		123.78	26,003	670		25%			100.7		1		
			TOTALS FOR JOB NO. 11662		994	258.30	804.40	186,100	1340	3670	100%	1031.2		201.4	474,420	4	160	



CROSS SECTION
LONGITUDINAL SECTION
DETAIL OF CONCRETE RIPRAP
Scale: 1/2" = 1'-0"

SCHEDULE C BRIDGE QUANTITIES
HWY. 17 INTERCHANGE-ST. FRANCIS CO. LINE

MONROE COUNTY

INT. ROUTE 40. SEC. 4

ARKANSAS STATE HIGHWAY COMMISSION
LITTLE ROCK, ARK.

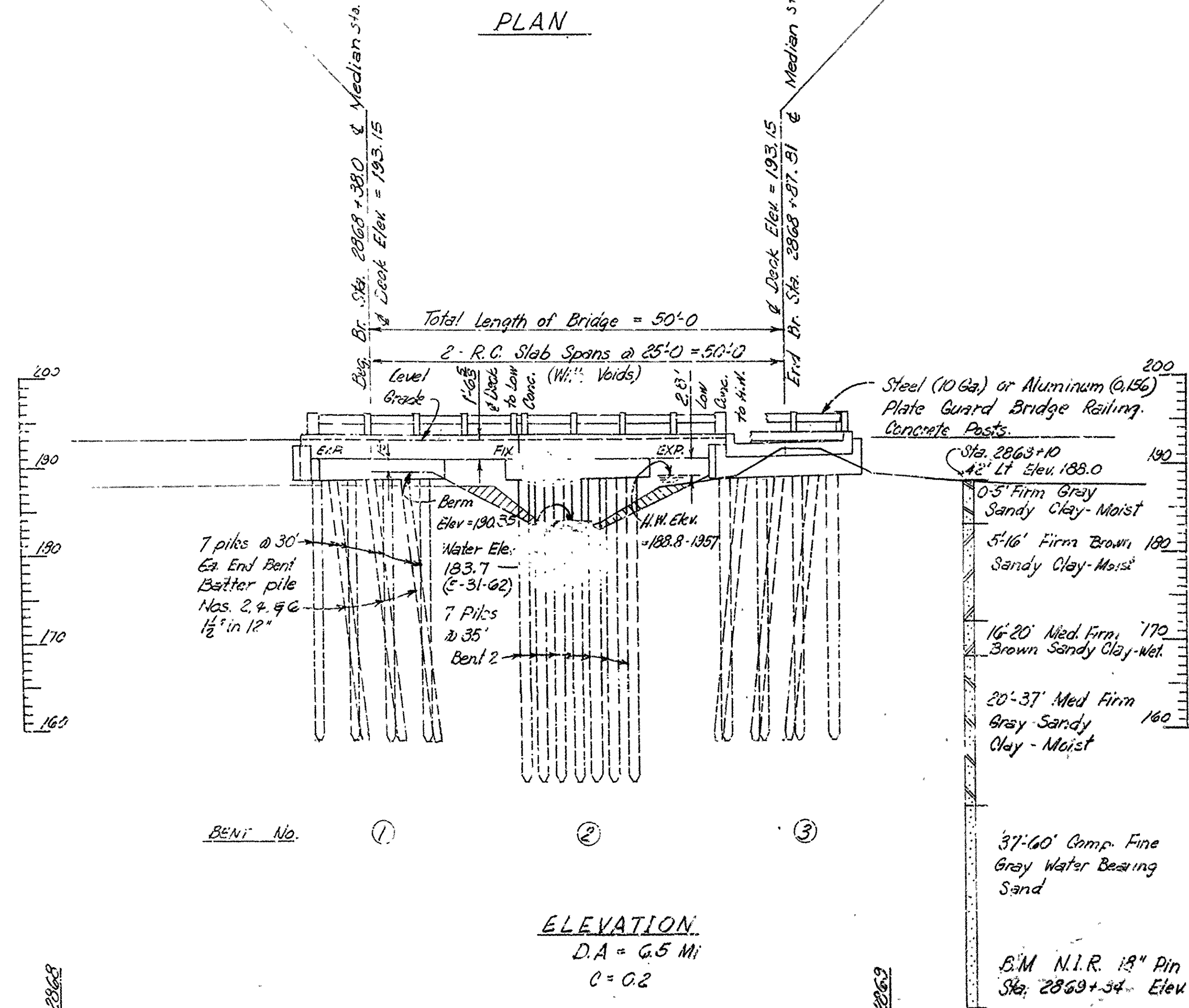
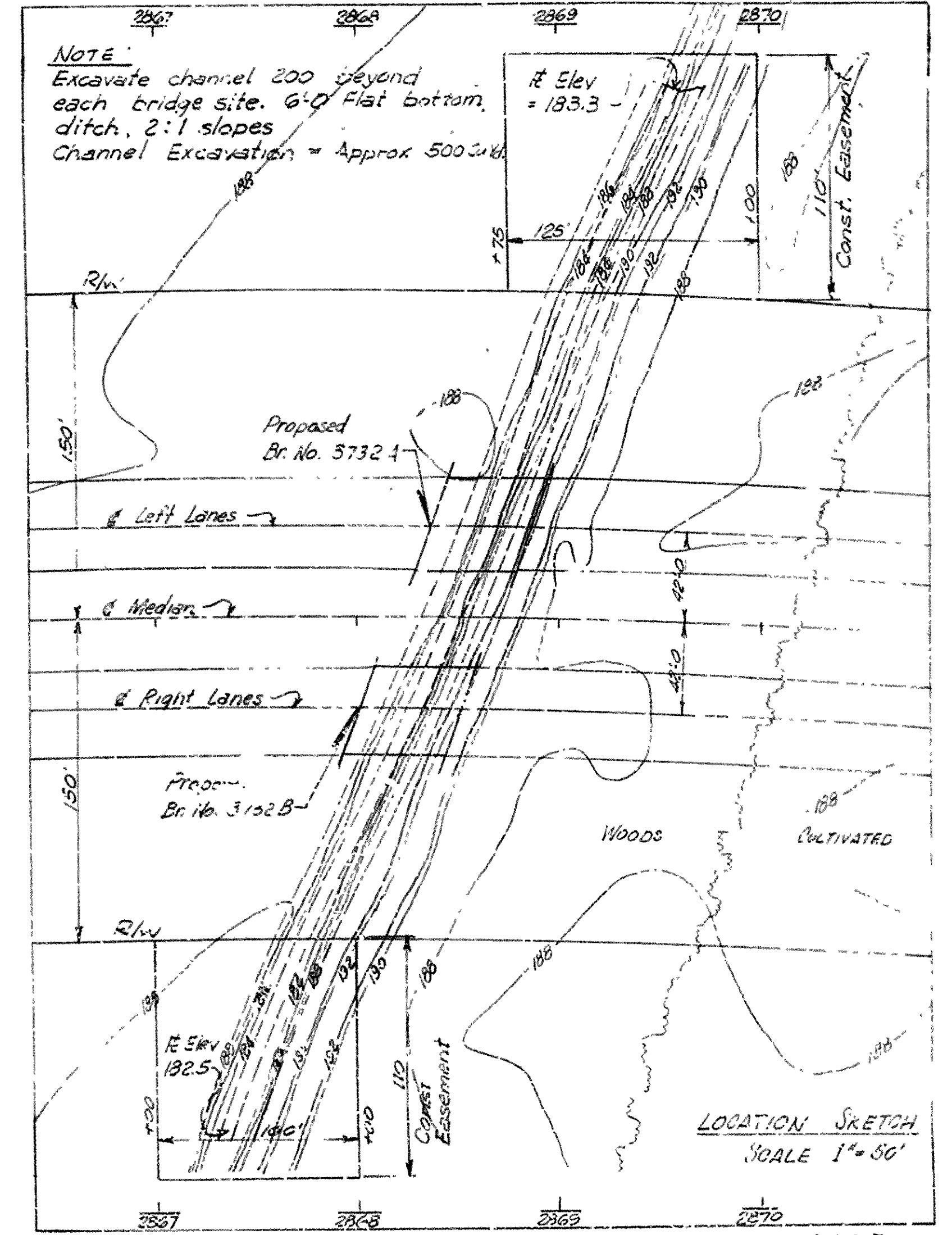
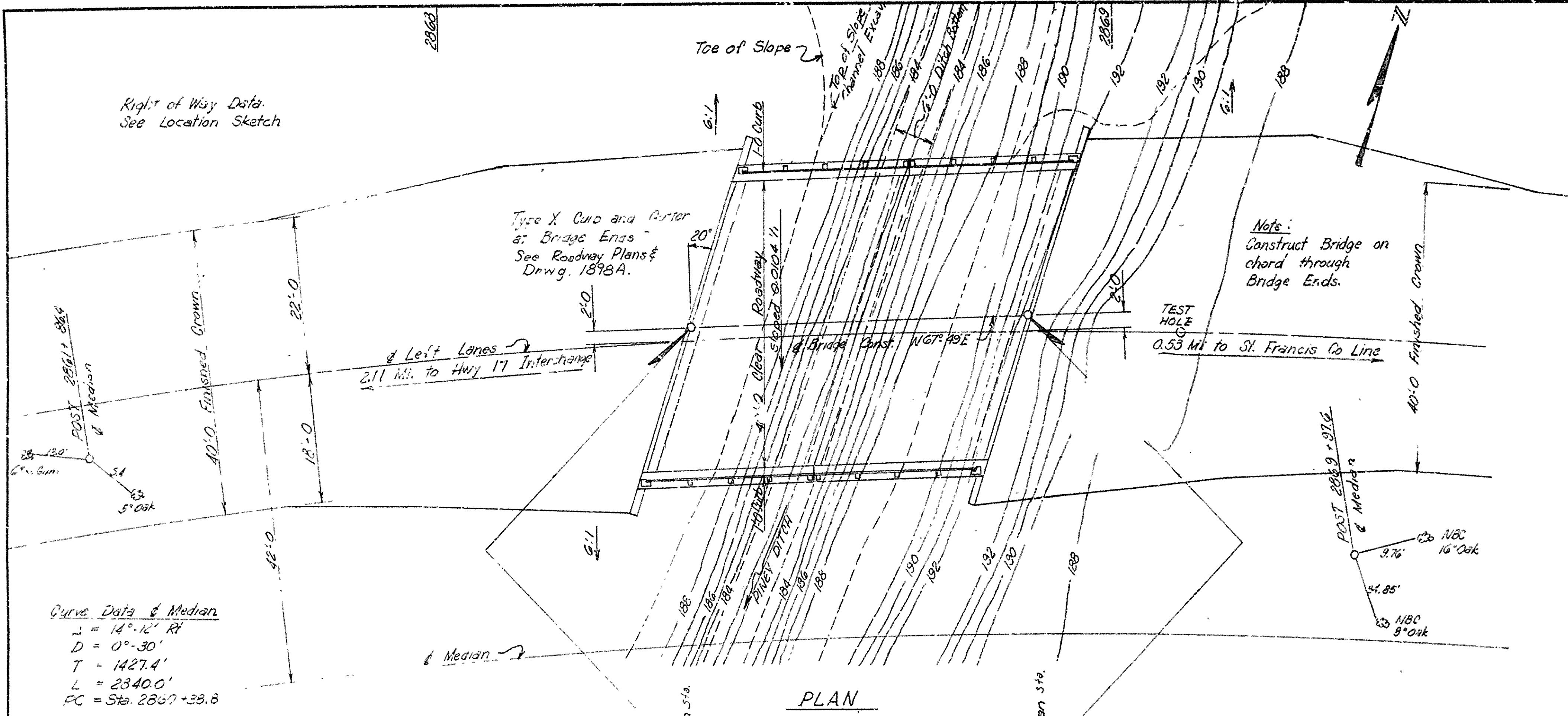
Revision: Changed Spans to
45' & 88' & Rev. Quantities.
RP. 9-17-63. CHD Rev. 9-17-63
Rev. Quantities 10-15-63 RP
Rev. CHD 9-17-63

DRAWN BY: J.P. DATE: 4-30-63
TRACED BY: J.P.H. DATE: 4-30-63
CHECKED BY: J.P.H. DATE: 4-30-63

L.P. Wilson
BRIDGE ENGINEER

BRIDGE NO. 3731A, 3731B, 3732A & 3732B
DRAWING NO. 12413

FED. ROAD No.	STATE	FED. AID PROJ. No.	FISCAL YEAR	SHEET No.	TOTAL SHEETS
6	ARK.	2-40	4/19/62	14	61
JOB No.		11642			



LEFT LANES
LAYOUT OF
BRIDGE OVER PINEY DITCH
HWY. 17 INTERCHANGE - ST. FRANCIS COUNTY LINE
MONROE COUNTY
INT. ROUTE 40 SEC. 4
ARKANSAS STATE HIGHWAY COMMISSION
LITTLE ROCK, ARK.

DRAWN BY: FHS DATE: 6-25-62
TRACED BY: DATE: SCALE: 1" = 10'
CHECKED BY: K.T. DATE: 4-12-63

BRIDGE NO. 3732-A DRAWING NO. 12424

L.P. Peterson
BRIDGE ENGINEER