



Latitude:34.83917, Longitude:-91.28562

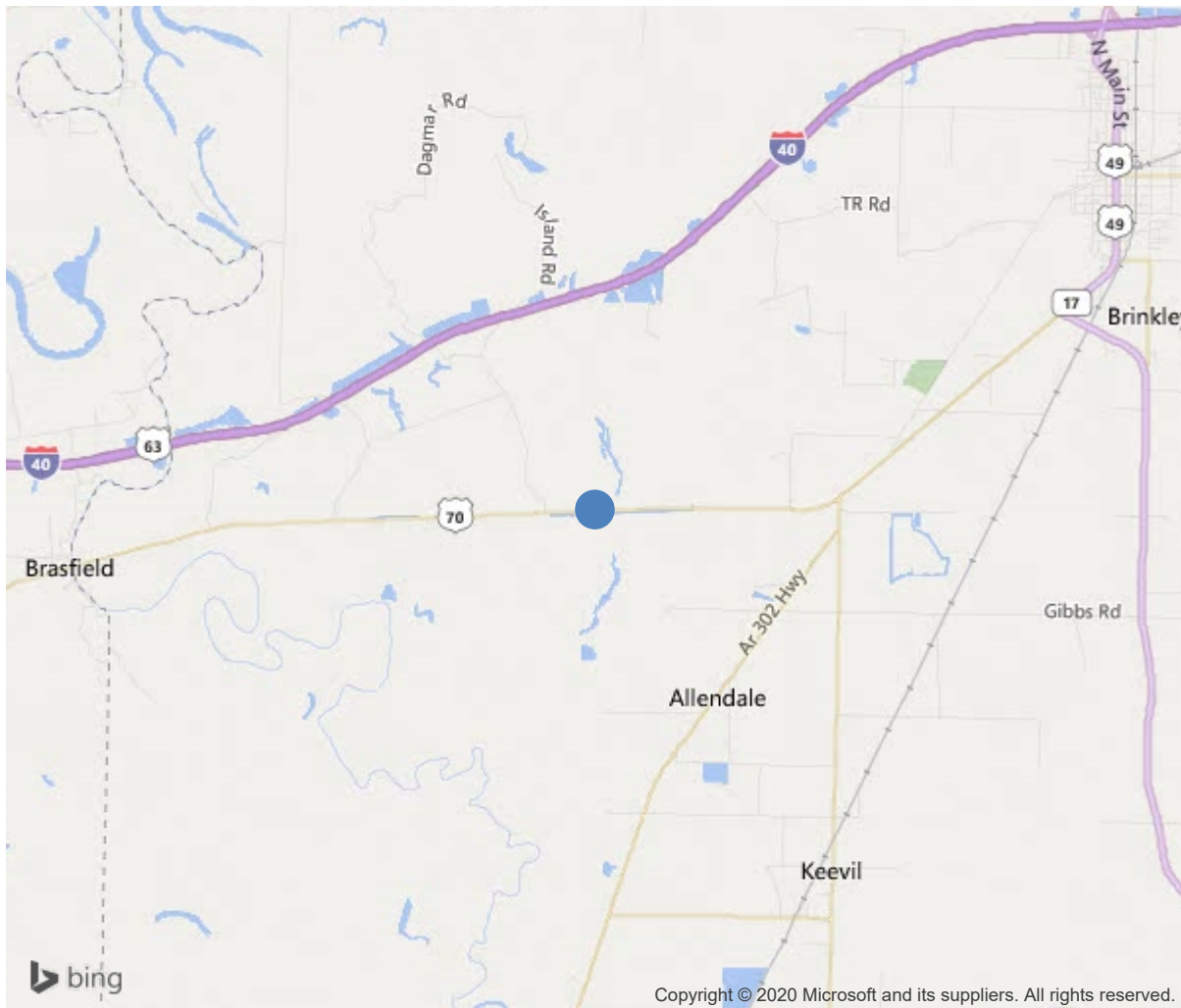
Route:70 Section:17 Log:5.25

Arnold Road ID:48x70x17xA, Arnold Log mile:5.252

District 01, Monroe County

Owner: 1-State Highway Agency

5.25 Mi E Praire Co Line



34.83917, -91.28562



Bridge #01111(Routine, Underwater type 2)

Us-70/Sec-17/L5.25 over Bayou Devieu River

Location: 5.25 Mi E Praire Co Line

Team Lead: Myron Futrell Inspection Date: April 14, 2020

IDENTIFICATION	
(1) State Names	Arkansas
(8) Structure Number	01111
(5) Inventory Route	70
(2) Highway Agency District	01
(3) County Code	95-Monroe County, Arkansas
(4) Place Code	0
(6) Features Intersected	Bayou Devieu River
(7) Facility Carried	Us-70/Sec-17/L5.25
(9) Location	5.25 Mi E Praire Co Line
(11) Mile Point	5.25 mi
(12) Base Highway Network	No
(13) LRS Inventory Rte & Subrte	0000000000
(16) Latitude	34.839169
(17) Longitude	-91.285622
(98) Border Bridge State Code	
(99) Border Bridge Structure No.	
STRUCTURE TYPE AND MATERIAL	
(43) Main Structure Type	14
Material	1-Concrete
Type	4-Tee beam
(44) Approach Structure Type	00
Material	0-Other
Type	0-Other
(45) No. of Spans in Main Unit	21
(46) No. of Approach Spans	0
(107) Deck Structure Type	1-Concrete Cast-in-Place
(108) Wearing Surface/Protective System	
Type of Wearing Surface	6-Bituminous
Type of Membrane	0-None
Type of Deck Protection	0-None
AGE AND SERVICE	
(27) Year Built	1930
(106) Year Reconstructed	0
(42) Type of Service	15
On	1-Highway
Under	5-Waterway
(28) Lane	
On	2
Under	0
(29) Average Daily Traffic	1100
(30) Year of ADT	2018
(109) Truck ADT	10 %
(19) Bypass, Detour Length	4 mi
GEOMETRIC DATA	
(48) Length of Maximum Span	34 ft
(49) Structure Length	715 ft
(50) Curb or Sidewalk Width	
Left	0.5 ft
Right	0.5 ft
(51) Bridge Roadway Width Curb to Curb	26.9 ft
(52) Deck Width Out to Out	30 ft
(32) Approach Roadway Width (W/Shoulders)	23.4 ft
(33) Bridge Median	0-No median
(34) Skew	0 Deg
(35) Structure Flared	No flare
(10) Inventory Route Min Vert Clear	99.99 ft
(47) Inventory Route Total Horiz Clear	27.9 ft
(53) Min Vert Clear Over Bridge Rdwy	99.99 ft
(54) Min Vert Underclear	0 ft
Ref:	
(55) Min Lat Underclear RT	0 ft
Ref:	
(56) Min Lat Underclear LT	0 ft
NAVIGATION DATA	
(38) Navigation Control	0-No navigation control on water
(111) Pier Protection	1-Navigation protection not requ
(39) Navigation Vertical Clearance	0 ft
(116) Vert-Lift Bridge Nav Min Vert Clear	0 ft
(40) Navigation Horizontal Clearance	0 ft

CLASSIFICATION			
(112) NBIS Bridge Length			Y
(104) Highway System			0
(26) Functional Class		7-Rural Major Collector	
(100) Defense Highway		0-The inventory route is not a S	
(101) Parallel Structure		N-No parallel structure exists.	
(102) Direction of Traffic		2 - way traffic	
(103) Temporary Structure			
(105) Federal Lands Highways			0-N/A
(110) Designated National Network		1-The inventory route is part of the	
(20) Toll		3-On free road. The structure is toll-	
(21) Maintain		1-State Highway Agency	
(22) Owner		1-State Highway Agency	
(37) Historical Significance		2-Bridge is eligible for the NRHP.	
CONDITION			
(58) Deck			6
(59) Superstructure			5
(60) Substructure			5
(61) Channel & Channel Protection			5
(62) Culverts			N
LOAD RATING AND POSTING			
(31) Design Load		2-M 13.5 / H 15	
(63) Operating Rating Method			1
(64) Operating Rating			
Type		1-Load Factor(LF)	
Rating			44
(65) Inventory Rating Method		1-Load Factor(LF)	
(66) Inventory Rating			
Type			21
Rating			27
(70) Bridge Posting		5-Equal to or above legal loads	
(41) Structure Open/Posted/Closed		A-Open, no restriction	
APPRAISAL			
(67) Structural Evaluation			5
(68) Deck Geometry			4
(69) Clearances, Vertical/Horizontal			N
(71) Waterway Adequacy			8
(72) Approach Roadway Alignment			8
(36) Traffic Safety Features			0000
A) Bridge Railings		0-Inspected feature does not meet cur	
B) Transitions		0-Inspected feature does not meet cur	
C) Approach Guardrail		0-Inspected feature does not meet cur	
D) Approach Guardrail Ends		0-Inspected feature does not meet cur	
(113) Scour Critical Bridges		5-Bridge foundations determined to be	
PROPOSED IMPROVEMENTS			
(75) Type of Work			
(76) Length of Structure Improvement			0 ft
(94) Bridge Improvement Cost			\$ 0
(95) Roadway Improvement Cost			\$ 0
(96) Total Project Cost			\$ 0
(97) Year of Improvement Cost Estimate			
(114) Future ADT			1167
(115) Year of Future ADT			2028
INSPECTIONS			
(90) Inspection Date			
(91) Frequency			24 Months
(92) Critical Feature Inspection	Done	Freq. (Mon)	Date
A: Fracture Critical Detail	No	24	
B: Underwater Inspection	Yes	0	
C: Other Special Inspection	No	0	

ELEM	DESCRIPTION	UNITS	TOTAL	CS1	CS2	CS3	CS4
16	Reinforced Concrete Top Flange	SF	21450	19177	1753	520	0
1080	Delamination/Spall/Patched Area	SF	803	0	803	0	0
1090	Exposed Rebar	SF	420	0	0	420	0
1120	Efflorescence/Rust Staining	SF	1050	0	950	100	0
510	Wearing Surfaces	SF	13234	10741	2193	300	0
3220	Crack (Wearing Surface)	SF	2493	0	2193	300	0
(16)							
<p>Deck curbs have multiple areas full length of bridge with spalling and deterioration exposing aggregate.</p> <p>Asphalt overlay has transverse cracks spaced 10' .</p> <p>Asphalt at joints is raveled full width.</p> <p>All spans have hairline transverse cracks in soffit some with light to moderate efflorescence.</p> <p>Soffit overhangs have numerous spalls and delamination's both side especially at joints and drains with exposed rebar with section loss up to 15%.</p> <p>Span #5 soffit between girders #4,5 near bent #5 has two foot area of spalling with exposed rebar with no section loss.</p> <p>Span #6 at bent #7 soffit between each girder has forms left in place.</p> <p>Soffit at bents #8,9,10,11,12,13,14,15 between girders #1 and 2 and #4 and 5 have 4' x 6' repair.</p> <p>Span #11 soffit between girders #1 and 2 has 2' of exposed rebar with 10% section loss.</p> <p>Span #17 soffit between girders #1,2 has a two foot delamination.</p>							
110	Reinforced Concrete Open Girder/Beam	LF	3575	3490	10	75	0
1080	Delamination/Spall/Patched Area	LF	42	0	0	42	0
1090	Exposed Rebar	LF	35	0	10	25	0
1130	Cracking (RC and Other)	LF	8	0	0	8	0
(110)							
<p>All girders have hairline vertical cracks spaced two feet apart.</p> <p>Span #1 girder #5 has 2' delamination at abutment #1.</p> <p>Span #4 girders #4,5 at bent #5 both have a 2' spall at bearing with exposed rebar with no section loss.</p> <p>Span #5 girder #5 at bent #5 has a 1' spall on left side with exposed rebar no section loss.</p> <p>Span #6 girder #5 at bent #7 last one foot bottom of girder is spalled with exposed rebar with 20% section loss.</p> <p>Span #7 girder #5 at bent #7 has a 2' spall on right side at bearing with rebar exposed with 20% section loss.</p> <p>Span #7 girder #2 at bent #7 has a 3' spall with 1' exposed rebar with 20% section loss on left side.</p> <p>Span #7 girder #4 at bent #7 has a two foot spall with 1' exposed rebar with 20% section loss on right side.</p> <p>Span #7 girder #1 at bent #8 has vertical 1/32" wide crack on left side.</p> <p>Span #8 girders #1,4 at bent #9 each are cracked at bearing with a one foot delamination.</p> <p>Span #9 girder #5 at bent #9 is cracked and delaminated at bearing for one foot.</p> <p>Span #10 all girders at bent #11 each have a one foot spall on end with exposed rebar with 10% section loss.</p> <p>Span #11 girders #1,2,3,4 at bent #11 each have a two foot spall on end with exposed rebar with 10% section loss.</p> <p>Span #12 girder #1 first ten feet from bent #12 has delamination.</p> <p>Span #12 girder #2 has 1/32" crack across bottom and up sides two feet from bent #12.</p> <p>Span #12 girders #3,4 at bent #12 each have a one foot spall.</p> <p>Span #13 girder #1 at bent #13 is cracked and delaminated on left side for one foot.</p> <p>Span #13 girder #4 at bent #13 has a 2' spall on right side bottom corner with exposed rebar with 5% section loss.</p> <p>Span #13 girders #1 and 5 at bent #14 has a 1' spall on left side with exposed rebar with no section loss.</p> <p>Span #14 girder #1 has a two foot delamination three feet ahead of bent# 14 on right side.</p> <p>Span #14 girders #4,5 at bent #15 each have a one foot spall with exposed rebar with 20% section loss.</p> <p>Span #15 girders #1,3,4,5 at bent #15 first foot is cracked, delaminated, and spalled with exposed rebar with 10% section loss.</p>							



[illegible]



Bridge #01111(Routine, Underwater type 2)

Us-70/Sec-17/L5.25 over Bayou Devew River

Location: 5.25 Mi E Praire Co Line

Team Lead: Myron Futrell, Inspection Date: April 14, 2020

ELEM	DESCRIPTION	UNITS	TOTAL	CS1	CS2	CS3	CS4
234	Reinforced Concrete Pier Cap	LF	508	459	20	29	0
1080	Delamination/Spall/Patched Area	LF	19	0	18	1	0
1090	Exposed Rebar	LF	15	0	2	13	0
1130	Cracking (RC and Other)	LF	15	0	0	15	0
(234)							
Bent #3 cap has a 2' spall on bottom at pile #3 with exposed rebar with 50% section loss. Bent #3 cap is cracked and delaminated on both ends on ahead face. Bent #3 cap back face left end corner spalled off no rebar exposed. Bent #3 cap back face above pile #2 has 1' delamination. Bent #3 cap back face 6" from top has longitudinal crack between girders #1 through #4. Bent #3 cap ahead face near bottom has 6' of longitudinal cracking. Bent #5 cap in center on bottom has two foot spall with exposed rebar with 10% section loss. Bent #5 cap ahead face near center has one foot spall with exposed rebar with no section loss. Bent #7 cap back face above pile #1 has one foot area of exposed rebar with 5% section loss. Bent #8 cap ahead face above pile #5 has 6" delamination. Bent #9 cap bottom in center has three foot area of honeycomb. Bent #11 cap ahead face has a 3' delamination above pile #2. Bent #11 cap ahead face has a 1' spall at pile #4 with exposed rebar with 5% section loss. Bent #12 cap back face above pile #1 has one foot of exposed rebar with no section loss. Bent #13 cap back face has a 2' delamination at pile #3. Bent #13 cap ahead face right end is cracked. Bent #15 cap on bottom right end has a one foot spall with exposed rebar with 10% section loss. Bent #15 cap back face has 1' delamination above pile #4. Bent #17 cap bottom has three feet of exposed rebar between two old repairs with 10% section loss. Bent #17 cap ahead face left end corner is cracked and delaminated with one foot spall on bottom with exposed rebar with 10% section loss. Bent #19 cap back face above pile #1 has one foot spall with exposed rebar with 15% section loss. Bent #19 cap back face at top has six foot long longitudinal crack under girder #2. Bent #19 cap ahead face has a 2'X6' delamination between piles #3,4. Bent #21 cap bottom has a one foot spall by pile #3 with exposed rebar with 5% section loss and a two foot delamination on bottom face at pile #2.							
305	Assembly Joint without Seal	LF	300	0	0	300	0
2350	Debris Impaction	LF	300	0	0	300	0
(305)							
Assembly joint steel where it can be seen has no paint and large amounts of section loss. Assembly joints are covered in asphalt limiting movement.							
311	Movable Bearing	EA	50	50	0	0	0
331	Reinforced Concrete Bridge Railing	LF	1430	1430	0	0	0



**Bridge #01111**(Routine, Underwater type 2)

**Us-70/Sec-17/L5.25 over Bayou Devew River**

**Location: 5.25 Mi E Praire Co Line**

**Team Lead: Myron Futrell Inspection Date: April 14, 2020**



Bridge #01111 (Routine, Underwater type 2)

Us-70/Sec-17/L5.25 over Bayou Devieu River

Location: 5.25 Mi E Prairie Co Line

Team Lead: Myron Futrell Inspection Date: April 14, 2020

## Maintenance Needs

Date Reported: 04/13/2011

Priority: D- Routine

Type of Work: N/A

Status: Monitor

Component:

---

### Deficiency Description

Bent #3 cap has a 2' spall on bottom at pile #3 with exposed rebar with 50% section loss.

Bent #3 cap is cracked and delaminated on both ends on ahead face.

Bent #3 cap back face left end corner spalled off no rebar exposed.

Bent #3 cap back face above pile #2 has 1' delamination.

Bent #3 cap back face 6" from top has longitudinal crack between girders #1 through #4.

Bent #3 cap ahead face near bottom has 6' of longitudinal cracking.

Bent #5 cap in center on bottom has two foot spall with exposed rebar with 10% section loss.

Bent #5 cap ahead face near center has one foot spall with exposed rebar with no section loss.

Bent #7 cap back face above pile #1 has one foot area of exposed rebar with 5% section loss.

Bent #8 cap ahead face above pile #5 has 6" delamination.

Bent #9 cap bottom in center has three foot area of honeycomb.

Bent #11 cap ahead face has a 3' delamination above pile #2.

Bent #11 cap ahead face has a 1' spall at pile #4 with exposed rebar with 5% section loss.

Bent #12 cap back face above pile #1 has one foot of exposed rebar with no section loss.

Bent #13 cap back face has a 2' delamination at pile #3.

Bent #13 cap ahead face right end is cracked.

Bent #15 cap on bottom right end has a one foot spall with exposed rebar with 10% section loss.

Bent #15 cap back face has 1' delamination above pile #4.

Bent #17 cap bottom has three feet of exposed rebar between two old repairs with 10% section loss.

Bent #17 cap ahead face left end corner is cracked and delaminated with one foot spall on bottom with exposed rebar with 10% section loss.

Bent #19 cap back face above pile #1 has one foot spall with exposed rebar with 15% section loss.

Bent #19 cap back face at top has six foot long longitudinal crack under girder #2.

Bent #19 cap ahead face has a 2'X 6' delamination between piles #3, 4.

Bent #21 cap bottom has a one foot spall by pile #3 with exposed rebar with 5% section loss and a two foot delamination on bottom face at pile #2.

### Remarks

---







**Bridge #01111**(Routine, Underwater type 2)

**Us-70/Sec-17/L5.25 over Bayou Devieu River**

**Location: 5.25 Mi E Praire Co Line**

**Team Lead: Myron Futrell Inspection Date: April 14, 2020**





**Bridge #01111**(Routine, Underwater type 2)  
**Us-70/Sec-17/L5.25 over Bayou Devieu River**

**Location: 5.25 Mi E Praire Co Line**

**Team Lead: Myron Futrell Inspection Date: April 14, 2020**







Bent 3 cap back face.



Bent #3 cap bottom face at pile #3.





Bent #5 cap bottom face between piles #2 and #3.

**Date Reported:** 04/13/2011  
**Priority:** C - Important  
**Type of Work:** N/A  
**Status:** Monitor  
**Component:**

---

### Deficiency Description

Bent #3 pile #1 is cracked at top with a one foot spall with exposed rebar with 20% section loss.  
Bent #5 pile #3 has 1' spall at top with exposed rebar with 10% section loss.  
Bent #6 pile #5 is spalled on ahead face with exposed rebar with 15% section loss.  
Bent #7 pile #5 is spalled on ahead face extending down 2' with exposed rebar with 15% section loss.  
Bent #9 pile #4 cracked 3' near top.  
Bent #9 pile #5 cracked 6' near top.  
Bent #11 pile #4 is spalled at top extending down 1' with 15% section loss.  
Bent #12 pile #4 is spalled at top with exposed rebar with 15% section loss.  
Bent #13 pile #1 has a 1' spall with exposed rebar with 15% section loss with several cracks extending down for three feet from cap and delaminated.  
Bent #13 pile #5 has cracks extending down three feet from top and one foot spall with exposed rebar with 15% section loss.  
Bent #15 pile #1 is cracked and delaminated full length with five foot spall with exposed rebar with 20% section loss.  
  
Bent #17 pile #3 has one foot spall at top with exposed rebar with 15% section loss with cracks extending down three feet from top.  
Bent #17 pile #4 has cracks extending down 2' from top and 1' delamination with 6" spall with exposed rebar with 20% section loss at top.  
Bent #17 pile #5 has a 6" spall with rebar exposed with 10% section loss with cracks extending down 2' from spall.  
Bent #19 pile #3 has a one foot spall at top with exposed rebar with 15% section loss.  
Bent #21 pile #2 is spalled, cracked, and delaminated with exposed rebar with 10% section loss.

### Remarks

---



Bent #15 Pile #1



**Bridge #01111**(Routine, Underwater type 2)

**Us-70/Sec-17/L5.25 over Bayou Devew River**

**Location: 5.25 Mi E Praire Co Line**

**Team Lead: Myron Futrell Inspection Date: April 14, 2020**



Bent #3 pile #1.





Bent #7 pile #5.



Bent #21 pile #2.



Bent #17 pile #5.



Bent #17 pile #4.



Bent #17 piles #3,4,5.



Bent #15 pile #1.





Bent #13 pile #5.



Bent #13 pile #1.





Bent #11 piles #4 and 5.



Bent #7 pile #5 has 3' of cracking near top.



**Bridge #01111**(Routine, Underwater type 2)  
**Us-70/Sec-17/L5.25 over Bayou Deview River**  
**Location: 5.25 Mi E Praire Co Line**

**Team Lead:** Myron Futrell **Inspection Date:** April 14, 2020

**Date Reported:** 04/13/2011

**Priority:** D- Routine

**Type of Work:** N/A

**Status:** Monitor

**Component:**

---

**Deficiency Description**

Bent #3 all piles and bent #16 piles #4,5 are undermined by scour 1'.

**Remarks**

---

**Date Reported:** 04/13/2011

**Priority:** D- Routine



Bridge #01111 (Routine, Underwater type 2)

Us-70/Sec-17/L5.25 over Bayou Deview River

Location: 5.25 Mi E Praire Co Line

Team Lead: Myron Futrell Inspection Date: April 14, 2020

Type of Work: N/A

Status: Monitor

Component:

---

### Deficiency Description

Span #1 girder #5 has 2' delamination at abutment #1.  
Span #4 girders #4, 5 at bent #5 both have a 2' spall at bearing with exposed rebar with no section loss.  
Span #5 girder #5 at bent #5 has a 1' spall on left side with exposed rebar no section loss.  
Span #6 girder #5 at bent #7 last one foot bottom of girder is spalled with exposed rebar with 20% section loss.  
Span #7 girder #5 at bent #7 has a 2' spall on right side at bearing with rebar exposed with 20% section loss.  
Span #7 girder #2 at bent #7 has a 3' spall with 1' exposed rebar with 20% section loss on left side.  
Span #7 girder #4 at bent #7 has a two foot spall with 1' exposed rebar with 20% section loss on right side.  
Span #7 girder #1 at bent #8 has vertical 1/32" wide crack on left side.  
Span #8 girders #1, 4 at bent #9 each are cracked at bearing with a one foot delamination.  
Span #9 girder #5 at bent #9 is cracked and delaminated at bearing for one foot.  
Span #10 all girders at bent #11 each have a one foot spall on end with exposed rebar with 10% section loss.  
Span #11 girders #1, 2, 3, 4 at bent #11 each have a two foot spall on end with exposed rebar with 10% section loss.  
Span #12 girder #1 first ten feet from bent #12 has delamination.  
Span #12 girder #2 has 1/32" crack across bottom and up sides two feet from bent #12.  
Span #12 girders #3, 4 at bent #12 each have a one foot spall.  
Span #13 girder #1 at bent #13 is cracked and delaminated on left side for one foot.  
Span #13 girder #4 at bent #13 has a 2' spall on right side bottom corner with exposed rebar with 5% section loss.  
Span #13 girders #1 and 5 at bent #14 has a 1' spall on left side with exposed rebar with no section loss.  
Span #14 girder #1 has a two foot delamination three feet ahead of bent# 14 on right side.  
Span #14 girders #4, 5 at bent #15 each have a one foot spall with exposed rebar with 20% section loss.  
Span #15 girders #1, 3, 4, 5 at bent #15 first foot is cracked, delaminated, and spalled with exposed rebar with 10% section loss.  
Span #16 at bent #17 girder #2 left side has one foot area of delamination with six inches rebar exposed with no section loss.  
Span #18 girder #3 at bent #19 has a one foot spall on right side with exposed rebar with 10% section loss.  
Span #19 girder #1 at bent #19 has 1' delamination on left side.  
Span #19 girder #3 at bent #20 has a one foot spall with no rebar exposed.  
Span #21 girder #1 at bent #21 has 2' delamination with 2' of exposed rebar with 10% section loss on left side.

### Remarks

---







**Bridge #01111**(Routine, Underwater type 2)  
**Us-70/Sec-17/L5.25 over Bayou Devieu River**  
**Location: 5.25 Mi E Praire Co Line**

**Team Lead: Myron Futrell Inspection Date: April 14, 2020**







Span #4 girder #5 at bent #5.



Span #4 girder #4 at bent #5.



Span #6 girder #5 at bent #7 last one foot bottom of girder is spalled with exposed rebar with 20% section loss.



Span #7 bent #7 girder #2 has 3' of spalling with 1' exposed rebar with 20% section loss.



Span #7 girder #4 at bent #7 has a two foot spall with 1' exposed rebar with 20% section loss on right side.





Span #1 girder #5 at abutment #1.



Span #21 girder #1 at bent #21.





Span #17 girder #5 at bent #17.



Span #14 girder #5 bent #15.



Span #14 girder #4 bent #15.



Span #14 girder #1 has a two foot delamination three feet ahead of bent# 14 on right side.



Span #13 bent #13 girder #4.



Span #13 girder #5 at bent #14 has 1' exposed rebar with 5% section loss.





Bent #14 girder #1.



Span #12 girder #1 first ten feet from bent #12 has delamination.





Span #11 girders at bent #11.



Span #10 girders at bent #11.



Span #7 girder #5 at bent #7 has a 2' spall on right side at bearing with rebar exposed with 20% section loss.



Span #5 girder #5 at bent #5 has a 1' spall on left side with exposed rebar no section loss.

**Date Reported:** 04/22/2013

**Priority:** D- Routine

**Type of Work:** N/A

**Status:** Monitor

**Component:**

---

**Deficiency Description**

Abutment #1 cap is undermined by erosion on right 6' up to 1' exposing one pile.

Abutment #2 cap is undermined by erosion in center up to six inches exposing one pile.

**Remarks**

---



Abutment #1 back wall between girders #4 and 5.



Abutment #2.



**Date Reported:** 04/22/2013

**Priority:** D- Routine

**Type of Work:** N/A

**Status:** Monitor

**Component:**

---

### Deficiency Description

All piles have light abrasion.

Bent #3 all piles and bent #16 piles #4, 5 are undermined by scour 1'.

Bent #3 pile #5 is cracked at top.

Bent #5 pile #4 has 1' delamination at top.

Bent #5 pile #5 is cracked on ahead face extending down 10'.

Bent #9 piles #4, 5 are both cracked at the top extending downward.

Bent #11 pile #5 is cracked at top extending down three feet.

Bent #13 pile #2 is cracked extending down from top two feet.

Bent #13 piles #3, 4 under sub cap are cracked and spalled with no exposed rebar.

Bent #15 piles #2, 5 each have cracks extending down for three feet from top.

Bent #17 pile #1 has crack extending down 2' from top

Bent #19 piles #1, 2, 4, 5 are cracked on back side extending down up to 6' from top.

Bent #21 pile #3 has a two foot delamination near top on back face.

### Remarks

---







Bent #3 pile #1





Bent #3 pile #5.



Bent #5 pile #3 1' spall at top with exposed rebar with 10% section loss.



Bent #5 pile #4 1' delamination at top.





Bent #5 pile #5.



Bent #9 pile #4 cracked 3' near top.





Bent #9 pile #5 cracked 6' near top.



Bent #15 pile #2.



Bent #21 pile #3.



Typical abrasion on piles.





Bent #19 pile #5.



Bent #19 piles #2 and 3.





Bent #17 pile #1.



Bent #15 pile #5.



Bent #13 pile #2.



Bent #11 piles #4 and 5.



**Bridge #01111**(Routine, Underwater type 2)  
**Us-70/Sec-17/L5.25 over Bayou Devieu River**  
**Location: 5.25 Mi E Praire Co Line**

**Team Lead:** Myron Futrell **Inspection Date:** April 14, 2020

**Date Reported:** 04/15/2014

**Priority:** D- Routine

**Type of Work:** N/A

**Status:** Monitor

**Component:**

---

### Deficiency Description

Deck curbs have multiple areas full length of bridge with spalling and deterioration exposing aggregate.

### Remarks

---





**Date Reported:** 04/10/2018  
**Priority:** C - Important  
**Type of Work:** N/A  
**Status:** Monitor  
**Component:**

---

**Deficiency Description**

Trees and vegetation are growing beside and under bridge and onto roadway.

**Remarks**

---



Trees and vegetation are growing beside and under bridge and onto roadway.



Trees and vegetation growing beside and under bridge.



**Bridge #01111**(Routine, Underwater type 2)  
**Us-70/Sec-17/L5.25 over Bayou Devieu River**  
**Location: 5.25 Mi E Praire Co Line**

**Team Lead: Myron Futrell Inspection Date: April 14, 2020**

**Date Reported:** 04/10/2018

**Priority:** D- Routine

**Type of Work:** N/A

**Status:** Monitor

**Component:**

---

### Deficiency Description

Gutters have vegetation growing in them.

### Remarks

---



Gutters have vegetation growing in them.



Dirt and vegetation in gutters.

**Date Reported:** 04/10/2018  
**Priority:** D- Routine  
**Type of Work:** N/A  
**Status:** Monitor  
**Component:**

---

**Deficiency Description**

Span #6 at bent #7 soffit between each girder has forms left in place.

**Remarks**

---



Span #6 at bent #7 soffit between each girder has forms left in place.





**Bridge #01111**(Routine, Underwater type 2)

**Us-70/Sec-17/L5.25 over Bayou Devew River**

**Location: 5.25 Mi E Praire Co Line**

**Team Lead:** Myron Futrell **Inspection Date:** April 14, 2020

## Inspection Comments

-