



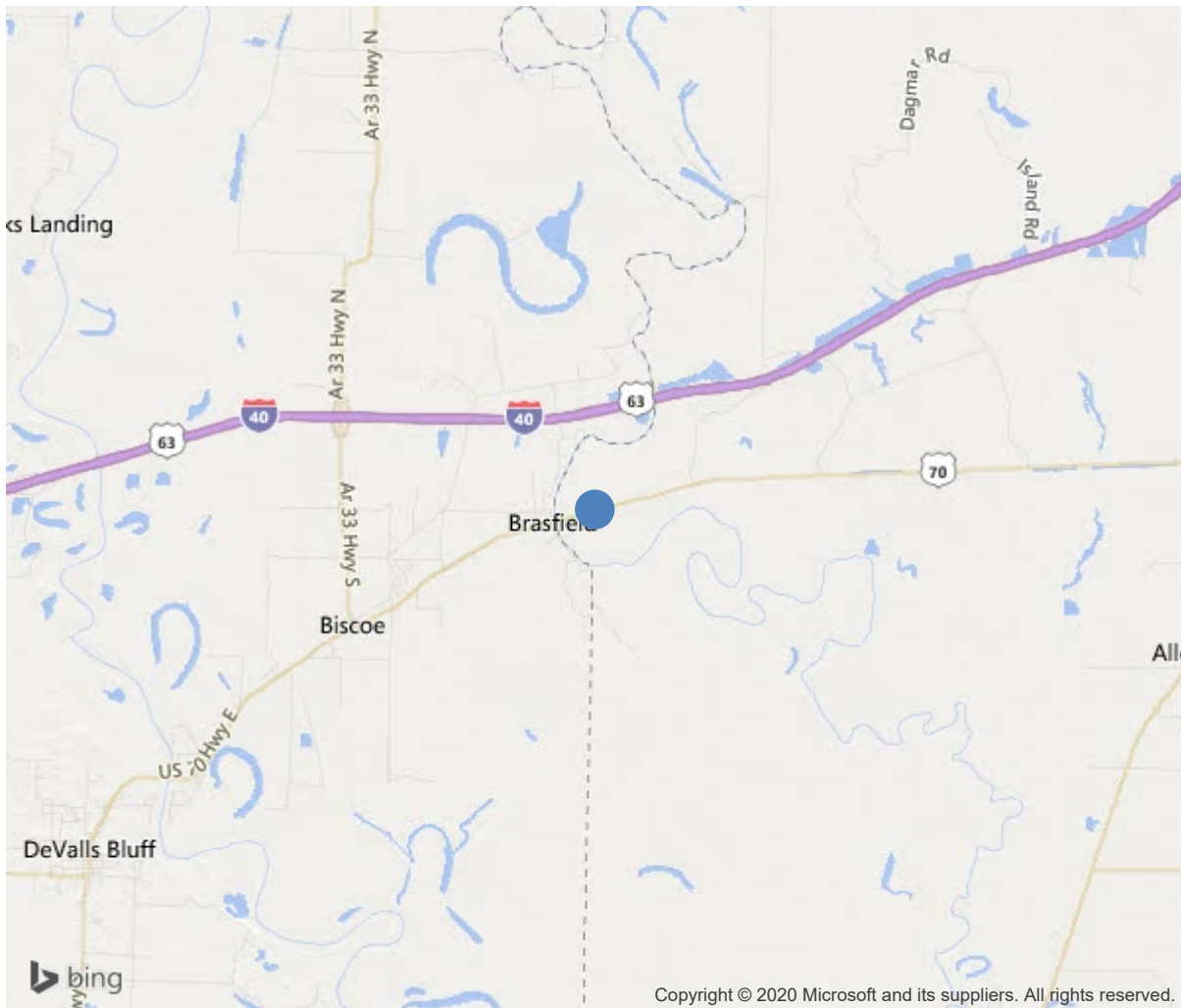
**Bridge #01102(Routine)**

**Us-70/Sec-17/L-0.4 over Cache River Relief**

**Location: .40 Mi E Of Prairie Co**

**Team Lead:** Drew Melton **Inspection Date:** October 29, 2018

.40 Mi E Of Prairie Co



34.83272, -91.37009



**Bridge #01102(Routine)**  
**Us-70/Sec-17/L-0.4 over Cache River Relief**

**Location: .40 Mi E Of Prairie Co**

**Team Lead: Drew Melton Inspection Date: October 29, 2018**

IDENTIFICATION	
(1) State Names	Arkansas
(8) Structure Number	01102
(5) Inventory Route	70
(2) Highway Agency District	01
(3) County Code	95-Monroe County, Arkansas
(4) Place Code	0
(6) Features Intersected	Cache River Relief
(7) Facility Carried	Us-70/Sec-17/L-0.4
(9) Location	.40 Mi E Of Prairie Co
(11) Mile Point	0.4 mi
(12) Base Highway Network	No
(13) LRS Inventory Rte & Subrte	0000000000
(16) Latitude	34.832722
(17) Longitude	-91.370087
(98) Border Bridge State Code	
(99) Border Bridge Structure No.	
STRUCTURE TYPE AND MATERIAL	
(43) Main Structure Type	14
Material	1-Concrete
Type	4-Tee beam
(44) Approach Structure Type	00
Material	0-Other
Type	0-Other
(45) No. of Spans in Main Unit	8
(46) No. of Approach Spans	0
(107) Deck Structure Type	1-Concrete Cast-in-Place
(108) Wearing Surface/Protective System	
Type of Wearing Surface	6-Bituminous
Type of Membrane	0-None
Type of Deck Protection	0-None
AGE AND SERVICE	
(27) Year Built	1930
(106) Year Reconstructed	0
(42) Type of Service	15
On	1-Highway
Under	5-Waterway
(28) Lane	
On	2
Under	0
(29) Average Daily Traffic	1100
(30) Year of ADT	2014
(109) Truck ADT	19 %
(19) Bypass, Detour Length	4 mi
GEOMETRIC DATA	
(48) Length of Maximum Span	34 ft
(49) Structure Length	273 ft
(50) Curb or Sidewalk Width	
Left	0.5 ft
Right	0.5 ft
(51) Bridge Roadway Width Curb to Curb	26.9 ft
(52) Deck Width Out to Out	30 ft
(32) Approach Roadway Width (W/Shoulders)	36.1 ft
(33) Bridge Median	0-No median
(34) Skew	0 Deg
(35) Structure Flared	No flare
(10) Inventory Route Min Vert Clear	99.99 ft
(47) Inventory Route Total Horiz Clear	27.9 ft
(53) Min Vert Clear Over Bridge Rdwy	99.99 ft
(54) Min Vert Underclear	0 ft
Ref:	
(55) Min Lat Underclear RT	99.9 ft
Ref:	
(56) Min Lat Underclear LT	0 ft
NAVIGATION DATA	
(38) Navigation Control	0-No navigation control on water
(111) Pier Protection	1-Navigation protection not requ
(39) Navigation Vertical Clearance	0 ft
(116) Vert-Lift Bridge Nav Min Vert Clear	0 ft
(40) Navigation Horizontal Clearance	0 ft

CLASSIFICATION	
(112) NBIS Bridge Length	Y
(104) Highway System	0
(26) Functional Class	7-Rural Major Collector
(100) Defense Highway	0-The inventory route is not a S
(101) Parallel Structure	N-No parallel structure exists.
(102) Direction of Traffic	2 - way traffic
(103) Temporary Structure	
(105) Federal Lands Highways	0-N/A
(110) Designated National Network	1-The inventory route is part of the
(20) Toll	3-On free road. The structure is toll-
(21) Maintain	1-State Highway Agency
(22) Owner	1-State Highway Agency
(37) Historical Significance	5-Bridge is not eligible for the NRHP
CONDITION	
(58) Deck	6
(59) Superstructure	7
(60) Substructure	7
(61) Channel & Channel Protection	6
(62) Culverts	N
LOAD RATING AND POSTING	
(31) Design Load	2-M 13.5 / H 15
(63) Operating Rating Method	1
(64) Operating Rating	
Type	1-Load Factor(LF)
Rating	48
(65) Inventory Rating Method	1-Load Factor(LF)
(66) Inventory Rating	
Type	8
Rating	29
(70) Bridge Posting	5-Equal to or above legal loads
(41) Structure Open/Posted/Closed	A-Open, no restriction
APPRAISAL	
(67) Structural Evaluation	6
(68) Deck Geometry	4
(69) Clearances, Vertical/Horizontal	N
(71) Waterway Adequacy	8
(72) Approach Roadway Alignment	8
(36) Traffic Safety Features	0000
A) Bridge Railings	0-Inspected feature does not meet cur
B) Transitions	0-Inspected feature does not meet cur
C) Approach Guardrail	0-Inspected feature does not meet cur
D) Approach Guardrail Ends	0-Inspected feature does not meet cur
(113) Scour Critical Bridges	5-Bridge foundations determined to be
PROPOSED IMPROVEMENTS	
(75) Type of Work	
(76) Length of Structure Improvement	0 ft
(94) Bridge Improvement Cost	\$ 0
(95) Roadway Improvement Cost	\$ 0
(96) Total Project Cost	\$ 0
(97) Year of Improvement Cost Estimate	
(114) Future ADT	1167
(115) Year of Future ADT	2028
INSPECTIONS	
(90) Inspection Date	
(91) Frequency	24 Months
(92) Critical Feature Inspection	Done Freq. (Mon) Date
A: Fracture Critical Detail	No 24
B: Underwater Inspection	No 0
C: Other Special Inspection	No 0



Bridge #01102(Routine)

Us-70/Sec-17/L-0.4 over Cache River Relief

Location: .40 Mi E Of Prairie Co

Team Lead: Drew Melton, Inspection Date: October 29, 2018

ELEM	DESCRIPTION	UNITS	TOTAL	CS1	CS2	CS3	CS4
16	Reinforced Concrete Top Flange	SF	8190	8060	110	20	0
1080	Delamination/Spall/Patched Area	SF	30	0	30	0	0
1090	Exposed Rebar	SF	20	0	0	20	0
1120	Efflorescence/Rust Staining	SF	80	0	80	0	0
510	Wearing Surfaces	SF	7644	7394	250	0	0
3220	Crack (Wearing Surface)	SF	250	0	250	0	0
(16)							
Deck surface has several cracks different directions all spans. Soffit each span has areas of delaminations. Span #4 bay #1 has four feet of exposed rebar in soffit with 10% section loss. Span #7 bays #1,4 each have four feet of exposed rebar in soffit with 10% section loss. Each span has transverse cracks in each bay with light efflorescence. Several six inch pieces of rebar exposed at various locations in soffit. Curbs have a few areas of deterioration at bents.							
110	Reinforced Concrete Open Girder/Beam	LF	1365	1365	0	0	0
(110)							
All beams have hairline vertical flexure cracks on sides. Diaphragms are spalled at bent #3.							
215	Reinforced Concrete Abutment	LF	64	32	32	0	0
6000	Scour	LF	32	0	32	0	0
(215)							
Abutment #2 cap is undermined six inches exposing four piles.							
227	Reinforced Concrete Pile	EA	39	38	1	0	0
1080	Delamination/Spall/Patched Area	EA	1	0	1	0	0
(227)							
Bent #3 pile #5 is cracked with delamination at top for three feet.							
234	Reinforced Concrete Pier Cap	LF	178	178	0	0	0
300	Strip Seal Expansion Joint	LF	84	0	0	84	0
2350	Debris Impaction	LF	84	0	0	84	0
(300)							
Assembly joint function has been reduced due to asphalt overlay.							
311	Movable Bearing	EA	15	15	0	0	0
331	Reinforced Concrete Bridge Railing	LF	546	546	0	0	0



**Bridge #01102(Routine)**

**Us-70/Sec-17/L-0.4 over Cache River Relief**

**Location: .40 Mi E Of Prairie Co**

**Team Lead:** Drew Melton **Inspection Date:** October 29, 2018



**Bridge #01102(Routine)**

**Us-70/Sec-17/L-0.4 over Cache River Relief**

**Location: .40 Mi E Of Prairie Co**

**Team Lead: Drew Melton Inspection Date: October 29, 2018**

## **Maintenance Needs**



**Bridge #01102**(Routine)

**Us-70/Sec-17/L-0.4 over Cache River Relief**

**Location: .40 Mi E Of Prairie Co**

**Team Lead:** Drew Melton **Inspection Date:** October 29, 2018

### Inspection Comments

-