



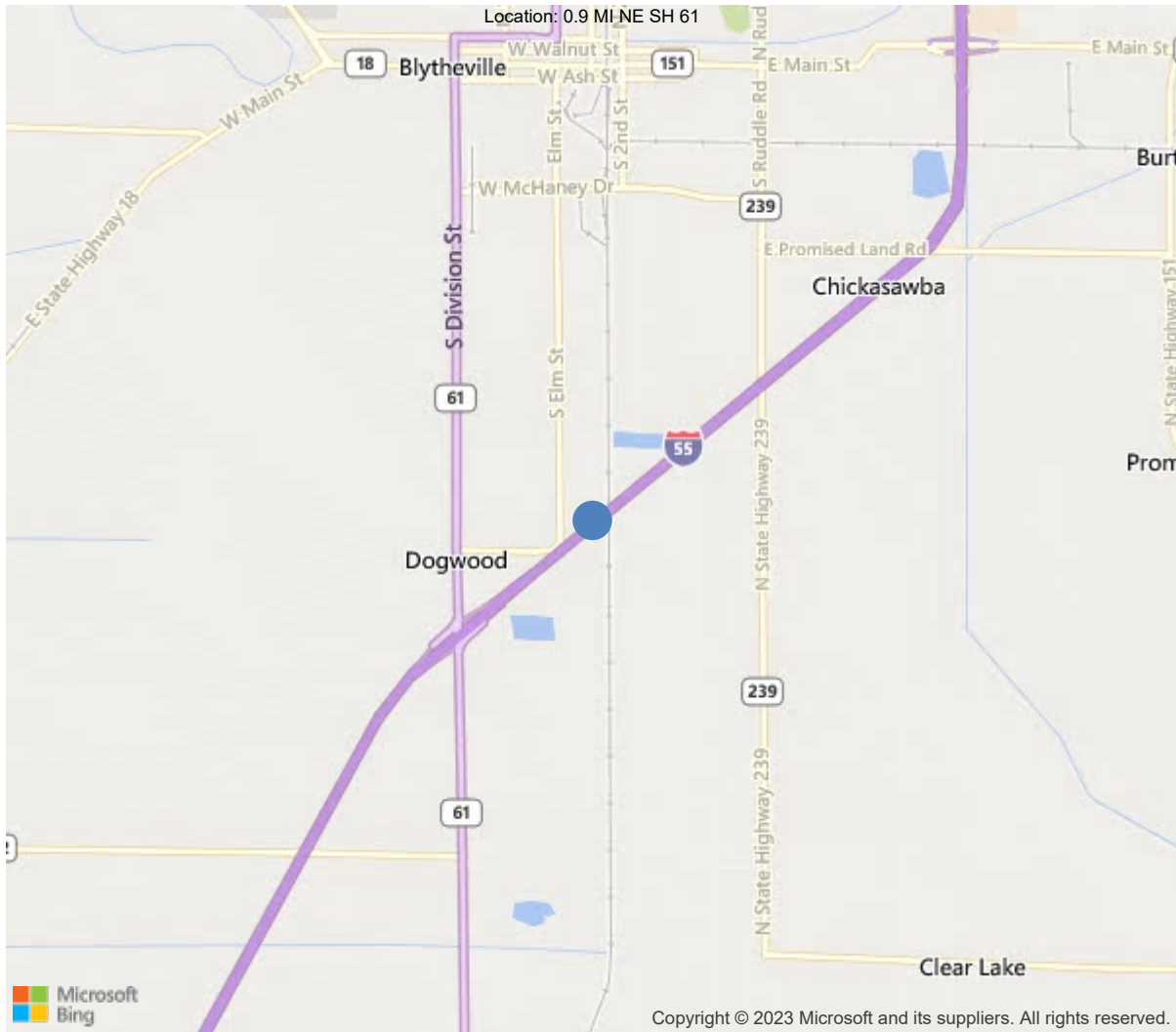
Latitude:35.89506, Longitude:-89.90662

Route:55 Section:12 Log:64.18

Arnold Road ID:47x55x12xB, Arnold Log mile:8.049

District 10, 93 - Mississippi County

Owner: 1 - State Highway Agency



35.89506, -89.90662



Asset #A3163(Routine)

I-55-SB-12-64.18 over BURLINGTON RR

Location: 0.9 MI NE SH 61

Team Lead: Richard Jones, Inspection Date: 11/02/2022

IDENTIFICATION	
(1) State Names	5 - Arkansas
(8) Structure Number	A3163
(5) Inventory Route	1
(2) Highway Agency District	10 - District 10
(3) County Code	93 - Mississippi County
(4) Place Code	0
(6) Features Intersected	BURLINGTON RR
(7) Facility Carried	I-55-SB-12-64.18
(9) Location	0.9 MI NE SH 61
(11) Mile Point	64.18 mi
(12) Base Highway Network	Yes
(13) LRS Inventory Rte & Subrte	0000055120
(16) Latitude	35.89506
(17) Longitude	-89.90662
(98) Border Bridge State Code	
(99) Border Bridge Structure No.	
STRUCTURE TYPE AND MATERIAL	
(43) Main Structure Type	11
Material	1 - Concrete
Type	1 - Slab
(44) Approach Structure Type	32
Material	3 - Steel
Type	2 - Stringer/Multi-beam or girder
(45) No. of Spans in Main Unit	1
(46) No. of Approach Spans	13
(107) Deck Structure Type	1 - Concrete Cast-in-Place
(108) Wearing Surface/Protective System	
Type of Wearing Surface	1 - Monolithic Concrete (concurrently pl
Type of Membrane	0 - None
Type of Deck Protection	0 - None
AGE AND SERVICE	
(27) Year Built	1960
(106) Year Reconstructed	1987
(42) Type of Service	12
On	1 - Highway
Under	2 - Railroad
(28) Lane	
On	2
Under	0
(29) Average Daily Traffic	11500
(30) Year of ADT	2018
(109) Truck ADT	1 %
(19) Bypass, Detour Length	1 mi
GEOMETRIC DATA	
(48) Length of Maximum Span	67.7 ft
(49) Structure Length	885.4 ft
(50) Curb or Sidewalk Width	
Left	0 ft
Right	0 ft
(51) Bridge Roadway Width Curb to Curb	40 ft
(52) Deck Width Out to Out	42.8 ft
(32) Approach Roadway Width (W/Shoulders)	38.1 ft
(33) Bridge Median	0 - No median
(34) Skew	0 Deg
(35) Structure Flared	0 - No flare
(10) Inventory Route Min Vert Clear	99.99 ft
(47) Inventory Route Total Horiz Clear	40 ft
(53) Min Vert Clear Over Bridge Rdwy	99.99 ft
(54) Min Vert Underclear	22.52 ft
Ref:	
(55) Min Lat Underclear RT	12.2 ft
Ref:	
(56) Min Lat Underclear LT	0 ft
NAVIGATION DATA	
(38) Navigation Control	N - Not applicable, no waterwa
(111) Pier Protection	5 - None present but re-evalua
(39) Navigation Vertical Clearance	0 ft
(116) Vert-Lift Bridge Nav Min Vert Clear	0 ft
(40) Navigation Horizontal Clearance	0 ft

CLASSIFICATION	
(112) NBIS Bridge Length	Y
(104) Highway System	1
(26) Functional Class	11 - Urban Principal Arterial
(100) Defense Highway	1 - The inventory route is on
(101) Parallel Structure	L - The left structure of para
(102) Direction of Traffic	1 - way traffic
(103) Temporary Structure	
(105) Federal Lands Highways	0 - N/A
(110) Designated National Network	1 - The inventory route is par
(20) Toll	3 - On free road. The structu
(21) Maintain	1 - State Highway Agency
(22) Owner	1 - State Highway Agency
(37) Historical Significance	5 - Bridge is not eligible for
CONDITION	
(58) Deck	6
(59) Superstructure	6
(60) Substructure	7
(61) Channel & Channel Protection	N
(62) Culverts	N
LOAD RATING AND POSTING	
(31) Design Load	6 - MS 18+Mod / HS 20+Mod
(63) Operating Rating Method	1
(64) Operating Rating	
Type	1 - Load Factor(LF)
Rating	60
(65) Inventory Rating Method	1 - Load Factor(LF)
(66) Inventory Rating	
Type	
Rating	36
(70) Bridge Posting	5 - Equal to or above legal loads
(41) Structure Open/Posted/Closed	A - Open, no restriction
APPRAISAL	
(67) Structural Evaluation	6
(68) Deck Geometry	7
(69) Clearances, Vertical/Horizontal	5
(71) Waterway Adequacy	N
(72) Approach Roadway Alignment	8
(36A) Bridge Railings	1 - Inspected feature meets current
(36B) Transitions	1 - Inspected feature meets current
(36C) Approach Guardrail	1 - Inspected feature meets current
(36D) Approach Guardrail Ends	1 - Inspected feature meets current
(113) Scour Critical Bridges	N - Bridge not over waterway.
PROPOSED IMPROVEMENTS	
(75) Type of Work	
(76) Length of Structure Improvement	0 ft
(94) Bridge Improvement Cost	\$ 0
(95) Roadway Improvement Cost	\$ 0
(96) Total Project Cost	\$ 0
(97) Year of Improvement Cost Estimate	
(114) Future ADT	12812
(115) Year of Future ADT	2028

INSPECTIONS *			
(90) Inspection Date	11/02/2022		
(91) Frequency	24		
(92) Critical Feature Inspection	Done	Freq. (Mon)	Date
A: Fracture Critical Detail	No		
B: Underwater Inspection	No		
C: Other Special Inspection			
<p>* The inspection date and frequency information in this box contains the current NBI date and frequency information. Please refer to the report header for the date this inspection was conducted.</p>			

58 - Deck (6 - SATISFACTORY CONDITION - structural elements show some minor deterioration.)

Approach slabs have a few minor cracks and a few spalled areas.

Compression seals are ripped and torn with several areas missing. Road irons have a few areas loose. Road iron has been partially removed at bent 8.

Lt bridge rail at Span 1 is cracked/delaminated on back face. Rails have several cracks and some rebar exposed.

Deck has numerous unsealed cracks and areas of abrasion.

Main slab span 8 has numerous unsealed diagonal cracks.

Soffit and overhangs have several cracks with efflorescence.

59 - Superstructure (6 - SATISFACTORY CONDITION - structural elements show some minor deterioration.)

Girders have scattered areas of surface rust throughout. Ends of girders have flaking rust with some section loss at web below haunch. A few have holes rusted through.

Girders have some minor flaking rust or pack rust and ends of cover plates.

Bearings have some pack rust.

Span 1 bent 1 bearings 4 and 5 have 1/8" gap between masonry and sole plates.

Span 2 bent 2 bearings 3 and 5 have 1/8" gap between masonry and sole plates.

Span 3 bent 4 bearing 2 is missing 1 cap screw.

Span 3 girder 6 has a possible crack in weld at end of cover plate near bent 4.

Span 4 bent 4 bearing 3 has 1/8" gap between masonry and sole plates.

Span 5 bent 6 bearing 6 has a loose bolt between sole plate and bottom flange of girder.

Span 7 bent 8 girder 3 has a 1.5" diameter hole in web below haunch.

Span 7 bent 8 girder 4 has a hole in web below haunch.

Span 9 bent 9 bearing 2 is missing a cap screw.

Span 9 bent 9 bearing 3 has a loose bolt between sole plate and bottom flange of girder.

Span 9 bent 10 bearing 3 has a loose bolt between sole plate and bottom flange of girder.

Span 9 bent 10 bearing 5 has 1/8" gap between masonry and sole plates.

Span 12 girder 2 has a possible crack in weld at end of cover plate near bent 13.

Span 14 bent 14 bearing 1 has one anchor bolt nut missing.

60 - Substructure (7 - GOOD CONDITION - some minor problems.)

Caps have a few cracks on Lt and Rt ends, some with light efflorescence. Caps have a few cracks or delaminated areas near construction joints. Caps have some rebar exposed.

Bent 5 column 3 has 4 spalls with rebar exposed from lack of coverage.

Bents 8 and 9 risers have patched/delaminated areas and a few spalls.

Bent 8 column 2 has small delaminated areas.

Bent 10 column 2 has some rebar exposed from lack of coverage.

Bent 11 columns 1 and 4 have a few delaminated areas.

Bent 11 column 2 has a 2' spall with exposed rebar near top.

Trees and dense vegetation are growing around interior bents and restricting inspection.

A-27 - Job Number (10616)

bridge was widened under job 100133

A-46 - Asset Files

-



Asset #A3163(Routine)

I-55-SB-12-64.18 over BURLINGTON RR

Location: 0.9 MI NE SH 61

Team Lead: Richard Jones, Inspection Date: 11/02/2022

ELEMENTS	DESCRIPTION	UNITS	TOTAL	CS1	CS2	CS3	CS4
12	Reinforced Concrete Deck	SF	36314	19961	9813	6540	0
1120	Efflorescence/Rust Staining	SF	2173	0	0	2173	0
1130	Cracking (RC and Other)	SF	4367	0	0	4367	0
1190	Abrasion/Wear (PSC/RC)	SF	9813	0	9813	0	0
38	RC Slab	SF	1522	863	302	357	0
1120	Efflorescence/Rust Staining	SF	44	0	44	0	0
1130	Cracking (RC and Other)	SF	357	0	0	357	0
1190	Abrasion/Wear (PSC/RC)	SF	258	0	258	0	0
107	Steel Open Girder/Beam	LF	5087	3165	1781	141	0
1000	Corrosion	LF	1922	0	1781	141	0
515	Steel Protective Coating	SF	50222	32645	5022	7533	5022
3440	Effectiveness (Steel Protective Coatings)	LF	17577	0	5022	7533	5022
205	Reinforced Concrete Column	EA	52	40	0	12	0
1080	Delamination/Spall/Patched Area	EA	5	0	0	5	0
1090	Exposed Rebar	EA	4	0	0	4	0
1120	Efflorescence/Rust Staining	EA	1	0	0	1	0
1130	Cracking (RC and Other)	EA	2	0	0	2	0
215	Reinforced Concrete Abutment	LF	127	115	0	12	0
1080	Delamination/Spall/Patched Area	LF	1	0	0	1	0
1130	Cracking (RC and Other)	LF	11	0	0	11	0
234	Reinforced Concrete Pier Cap	LF	579	490	50	39	0
1080	Delamination/Spall/Patched Area	LF	20	0	17	3	0
1090	Exposed Rebar	LF	1	0	0	1	0
1120	Efflorescence/Rust Staining	LF	16	0	3	13	0
1130	Cracking (RC and Other)	LF	52	0	30	22	0
302	Compression Joint Seal	LF	693	506	0	184	3
2320	Seal Adhesion	LF	12	0	0	12	0
2330	Seal Damage	LF	74	0	0	73	1
2340	Seal Cracking	LF	99	0	0	99	0
2360	Adjacent Deck or Header	LF	2	0	0	0	2



Asset #A3163(Routine)

I-55-SB-12-64.18 over BURLINGTON RR

Location: 0.9 MI NE SH 61

Team Lead: Richard Jones, **Inspection Date:** 11/02/2022

ELEMENTS	DESCRIPTION	UNITS	TOTAL	CS1	CS2	CS3	CS4
311	Movable Bearing	EA	78	0	0	78	0
1000	Corrosion	EA	77	0	0	77	0
1020	Connection	EA	1	0	0	1	0
313	Fixed Bearing	EA	78	0	67	11	0
1000	Corrosion	EA	73	0	67	6	0
1020	Connection	EA	5	0	0	5	0
321	Reinforced Concrete Approach Slab	SF	1752	1712	0	40	0
1080	Delamination/Spall/Patched Area	SF	7	0	0	7	0
1130	Cracking (RC and Other)	SF	33	0	0	33	0
331	Reinforced Concrete Bridge Railing	LF	1767	1472	22	273	0
1080	Delamination/Spall/Patched Area	LF	17	0	6	11	0
1090	Exposed Rebar	LF	16	0	16	0	0
1130	Cracking (RC and Other)	LF	262	0	0	262	0



Asset #A3163(Routine)

I-55-SB-12-64.18 over BURLINGTON RR

Location: 0.9 MI NE SH 61

Team Lead: Richard Jones, Inspection Date: 11/02/2022

Deck

ELEMENTS	DESCRIPTION	UNITS	TOTAL	CS1	CS2	CS3	CS4
12	Reinforced Concrete Deck	SF	36314	19961	9813	6540	0
1120	Efflorescence/Rust Staining	SF	2173	0	0	2173	0
1130	Cracking (RC and Other)	SF	4367	0	0	4367	0
1190	Abrasion/Wear (PSC/RC)	SF	9813	0	9813	0	0
38	RC Slab	SF	1522	863	302	357	0
1120	Efflorescence/Rust Staining	SF	44	0	44	0	0
1130	Cracking (RC and Other)	SF	357	0	0	357	0
1190	Abrasion/Wear (PSC/RC)	SF	258	0	258	0	0

58 - Deck (6 - SATISFACTORY CONDITION - structural elements show some minor deterioration.)

Comment: Approach slabs have a few minor cracks and a few spalled areas.

Compression seals are ripped and torn with several areas missing. Road irons have a few areas loose. Road iron has been partially removed at bent 8.

Lt bridge rail at Span 1 is cracked/delaminated on back face. Rails have several cracks and some rebar exposed.

Deck has numerous unsealed cracks and areas of abrasion.

Main slab span 8 has numerous unsealed diagonal cracks.

Soffit and overhangs have several cracks with efflorescence.

**Superstructure**

ELEMENTS	DESCRIPTION	UNITS	TOTAL	CS1	CS2	CS3	CS4
107	Steel Open Girder/Beam	LF	5087	3165	1781	141	0
1000	Corrosion	LF	1922	0	1781	141	0
515	Steel Protective Coating	SF	50222	32645	5022	7533	5022
3440	Effectiveness (Steel Protective Coatings)	LF	17577	0	5022	7533	5022

59 - Superstructure (6 - SATISFACTORY CONDITION - structural elements show some minor deterioration.)

Comment: Girders have scattered areas of surface rust throughout. Ends of girders have flaking rust with some section loss at web below haunch. A few have holes rusted through.

Girders have some minor flaking rust or pack rust and ends of cover plates.

Bearings have some pack rust.

Span 1 bent 1 bearings 4 and 5 have 1/8" gap between masonry and sole plates.

Span 2 bent 2 bearings 3 and 5 have 1/8" gap between masonry and sole plates.

Span 3 bent 4 bearing 2 is missing 1 cap screw.

Span 3 girder 6 has a possible crack in weld at end of cover plate near bent 4.

Span 4 bent 4 bearing 3 has 1/8" gap between masonry and sole plates.

Span 5 bent 6 bearing 6 has a loose bolt between sole plate and bottom flange of girder.

Span 7 bent 8 girder 3 has a 1.5" diameter hole in web below haunch.

Span 7 bent 8 girder 4 has a hole in web below haunch.

Span 9 bent 9 bearing 2 is missing a cap screw.

Span 9 bent 9 bearing 3 has a loose bolt between sole plate and bottom flange of girder.

Span 9 bent 10 bearing 3 has a loose bolt between sole plate and bottom flange of girder.

Span 9 bent 10 bearing 5 has 1/8" gap between masonry and sole plates.

Span 12 girder 2 has a possible crack in weld at end of cover plate near bent 13.

Span 14 bent 14 bearing 1 has one anchor bolt nut missing.



Substructure

ELEMENTS	DESCRIPTION	UNITS	TOTAL	CS1	CS2	CS3	CS4
205	Reinforced Concrete Column	EA	52	40	0	12	0
1080	Delamination/Spall/Patched Area	EA	5	0	0	5	0
1090	Exposed Rebar	EA	4	0	0	4	0
1120	Efflorescence/Rust Staining	EA	1	0	0	1	0
1130	Cracking (RC and Other)	EA	2	0	0	2	0
215	Reinforced Concrete Abutment	LF	127	115	0	12	0
1080	Delamination/Spall/Patched Area	LF	1	0	0	1	0
1130	Cracking (RC and Other)	LF	11	0	0	11	0
234	Reinforced Concrete Pier Cap	LF	579	490	50	39	0
1080	Delamination/Spall/Patched Area	LF	20	0	17	3	0
1090	Exposed Rebar	LF	1	0	0	1	0
1120	Efflorescence/Rust Staining	LF	16	0	3	13	0
1130	Cracking (RC and Other)	LF	52	0	30	22	0

60 - Substructure (7 - GOOD CONDITION - some minor problems.)

Comment: Caps have a few cracks on Lt and Rt ends, some with light efflorescence. Caps have a few cracks or delaminated areas near construction joints. Caps have some rebar exposed.

Bent 5 column 3 has 4 spalls with rebar exposed from lack of coverage.

Bents 8 and 9 risers have patched/delaminated areas and a few spalls.

Bent 8 column 2 has small delaminated areas.

Bent 10 column 2 has some rebar exposed from lack of coverage.

Bent 11 columns 1 and 4 have a few delaminated areas.

Bent 11 column 2 has a 2' spall with exposed rebar near top.

Trees and dense vegetation are growing around interior bents and restricting inspection.



Asset #A3163(Routine)

I-55-SB-12-64.18 over BURLINGTON RR

Location: 0.9 MI NE SH 61

Team Lead: Richard Jones, Inspection Date: 11/02/2022

Culvert

ELEMENTS	DESCRIPTION	UNITS	TOTAL				
				CS1	CS2	CS3	CS4



Maintenance Needs

Date Reported: 10/22/2012

Priority: C - Important

Type of Work: (Inactive) (Inactive) 9 - None

Status: Monitor

Component: Superstructure

Deficiency Description

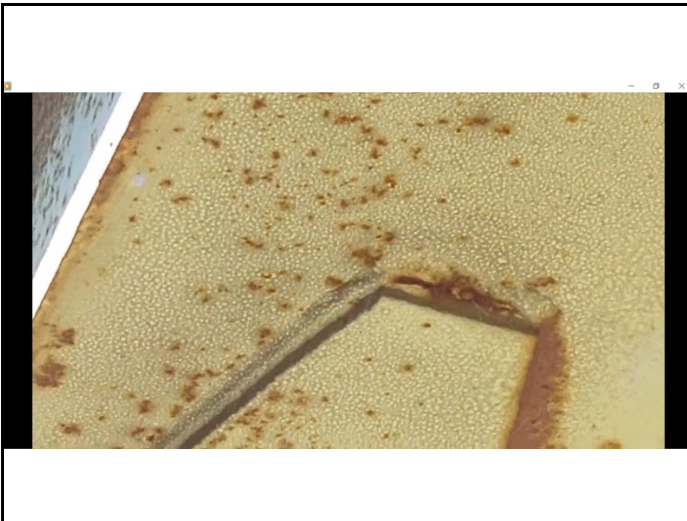
Girders have scattered areas of surface rust throughout. Ends of girders have flaking rust with some section loss at web below haunch. A few have holes rusted through.

Girders have some minor flaking rust or pack rust and ends of cover plates.

Span 3 girder 6 has a possible crack in weld at end of cover plate near bent 4.

Span 12 girder 2 has a possible crack in weld at end of cover plate near bent 13.

Remarks



Span 3 girder 6





Span 12 girder 2



Asset #A3163(Routine)

I-55-SB-12-64.18 over BURLINGTON RR

Location: 0.9 MI NE SH 61

Team Lead: Richard Jones, **Inspection Date:** 11/02/2022

Maintenance Needs

Date Reported: 10/22/2012

Priority: D- Routine

Type of Work: Repair (General)

Status: Monitor

Component: Element

Deficiency Description

Lt bridge rail at Span 1 is cracked/delaminated on back face. Rails have several cracks and some rebar exposed.

Remarks



Maintenance Needs

Date Reported: 10/22/2012

Priority: C - Important

Type of Work: Repair (General)

Status: Monitor

Component: Deck

Deficiency Description

Deck has numerous unsealed cracks and areas of abrasion.
Main slab span 8 has numerous unsealed diagonal cracks.

Remarks



Main slab span 8



typ deck cracks



Maintenance Needs

Date Reported: 10/22/2012

Priority: C - Important

Type of Work: Replace (General)

Status: Monitor

Component: Element

Deficiency Description

Compression seals are ripped and torn with several areas missing. Road irons have a few areas loose. Road iron has been partially removed at bent 8.

Remarks



Bent 8



Maintenance Needs

Date Reported: 10/22/2012

Priority: C - Important

Type of Work: Repair (General)

Status: Monitor

Component: Superstructure

Deficiency Description

Bearings have some pack rust.

Span 1 bent 1 bearings 4 and 5 have 1/8" gap between masonry and sole plates.

Span 2 bent 2 bearings 3 and 5 have 1/8" gap between masonry and sole plates.

Span 3 bent 4 bearing 2 is missing 1 cap screw.

Span 4 bent 4 bearing 3 has 1/8" gap between masonry and sole plates.

Span 5 bent 6 bearing 6 has a loose bolt between sole plate and bottom flange of girder.

Span 9 bent 9 bearing 2 is missing a cap screw.

Span 9 bent 9 bearing 3 has a loose bolt between sole plate and bottom flange of girder.

Span 9 bent 10 bearing 3 has a loose bolt between sole plate and bottom flange of girder.

Span 9 bent 10 bearing 5 has 1/8" gap between masonry and sole plates.

Span 14 bent 14 bearing 1 has one anchor bolt nut missing.

Remarks



Span 2 bent 2 bearing 5





Asset #A3163(Routine)

I-55-SB-12-64.18 over BURLINGTON RR

Location: 0.9 MI NE SH 61

Team Lead: Richard Jones, **Inspection Date:** 11/02/2022

Maintenance Needs

Date Reported: 11/21/2014

Priority: C - Important

Type of Work: (Inactive) (Inactive) 1 - Clean

Status: Monitor

Component: Channel

Deficiency Description

Trees and dense vegetation are growing around interior bents and restricting inspection.

Remarks

Maintenance Needs

Date Reported: 10/18/2016

Priority: D- Routine

Type of Work: (Inactive) (Inactive) 9 - None

Status: Monitor

Component: Substructure

Deficiency Description

Columns have minor deterioration.
Bent 8 column 2 has small delaminated areas.
Bent 10 column 2 has some rebar exposed from lack of coverage.
Bent 11 columns 1 and 4 have a few delaminated areas.
Bent 11 column 2 has a 2' spall with exposed rebar near top.

Remarks



Bent 11 column 2







Asset #A3163(Routine)

I-55-SB-12-64.18 over BURLINGTON RR

Location: 0.9 MI NE SH 61

Team Lead: Richard Jones, **Inspection Date:** 11/02/2022

Maintenance Needs

Date Reported: 10/18/2016

Priority: D- Routine

Status: Monitor

Type of Work: (Inactive) (Inactive) 9 - None

Component: Substructure

Deficiency Description

Caps have a few cracks on Lt and Rt ends, some with light efflorescence. Caps have a few cracks or delaminated areas near construction joints. Caps have some rebar exposed.

Bents 8 and 9 risers have patched/delaminated areas and a few spalls.

Remarks

Maintenance Needs

Date Reported: 10/18/2016

Priority: C - Important

Type of Work: Repair (General)

Status: Monitor

Component: Approach

Deficiency Description

Approach slabs have a few minor cracks and a few spalled areas.

Remarks



Approach slab at end



Asset #A3163(Routine)

I-55-SB-12-64.18 over BURLINGTON RR

Location: 0.9 MI NE SH 61

Team Lead: Richard Jones, Inspection Date: 11/02/2022

Routine Maintenance

Check Box Maintenance Items

Type of Maintenance	Is recommended?
A-54 - Sealable Deck Cracks	
A-55 - Deck Washing Needed	
A-56 - Joint Cleaning/Flushing Needed	
A-57 - Beam End and Bearing Paint Needed	
A-58 - Cap Cleaning/Flushing Needed	
A-59 - Joint Repair Needed	
A-60 - Full Beam Painting Needed	
A-61 - Polymer Overlay Advised	
A-62 - Hydro and LMC Advised	



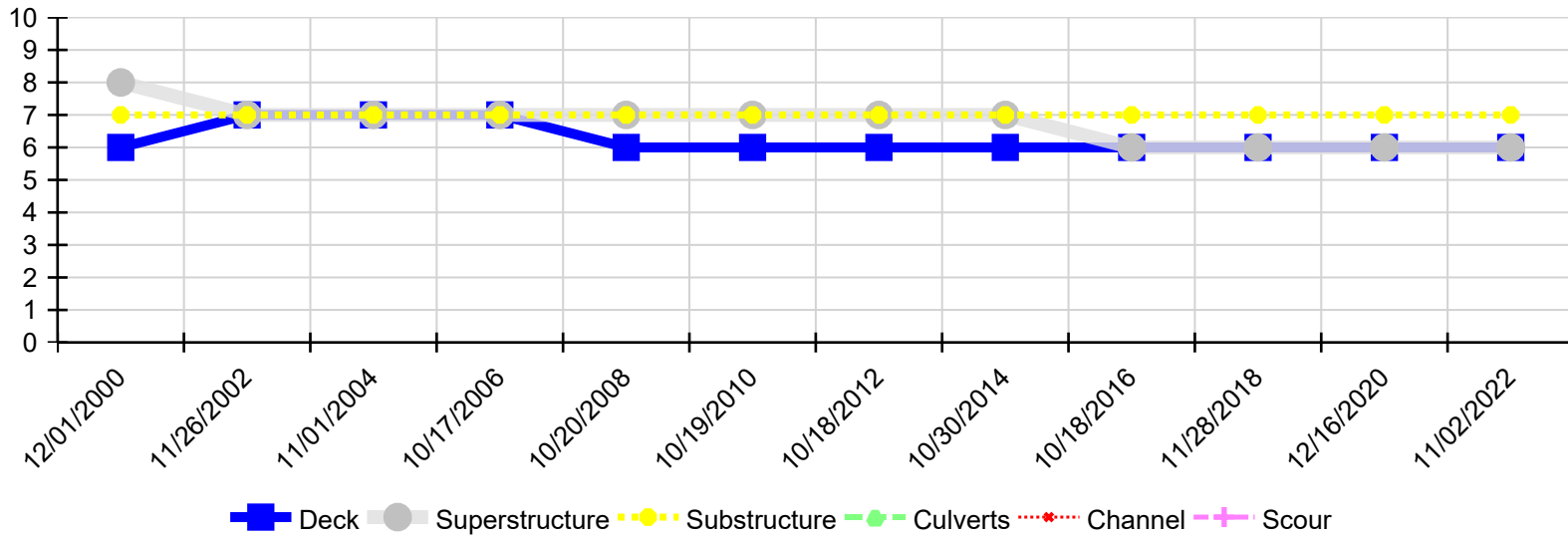
Asset #A3163(Routine)

I-55-SB-12-64.18 over BURLINGTON RR

Location: 0.9 MI NE SH 61

Team Lead: Richard Jones, Inspection Date: 11/02/2022

Condition History



Inspection Date	Deck	Superstructure	Substructure	Culverts	Channel	Scour
11/02/2022	6	6	7	N	N	N
12/16/2020	6	6	7	N	N	N
11/28/2018	6	6	7	N	N	N
10/18/2016	6	6	7	N	N	N
10/30/2014	6	7	7	N	N	N
10/18/2012	6	7	7	N	N	N
10/19/2010	6	7	7	N	N	N
10/20/2008	6	7	7	N	N	N
10/17/2006	7	7	7	N	N	N
11/01/2004	7	7	7	N	N	N
11/26/2002	7	7	7	N	N	N
12/01/2000	6	8	7	N	N	N