

Bent 1	Bent 2	Bent 3	+12	+24	Mid	+80	+95	Bent 4	Bent 5	Bent 6
3.3'	4.3'	9.3'	12.5'	19.4'	20.9'	19.8'	11.9'	8.6'	4.5'	4.3'
3.6'	3.2'	8.2'	11.0'	17.2'	19.5'	19.4'	14.7'	5.5'	3.4'	3.3'
2.4'	3.1'	6.2'	10.8'	16.7'	19.5'	19.3'	13.6'	3.0'	2.0'	2.0'
3.2'	2.3'	6.2'	12.6'	17.8'	19.4'	18.8'	15.1'	11.9'	1.2'	1.8'

Readings taken from top of deck
on Rt side. (Down stream side)

-- *Additional
-- reading taken
11.1' on back side of
bent 4 cap

Red line and soundings taken on 3/27/1973
Blue line and soundings taken on 9/20/2006
Green line and soundings from 8/20/13
Orange line and soundings taken on 9/17/2020

*Timber pile lengths are unknown *Not to Scale

Bridge No. M3187	Dist. 10	Co. Craighead - 16
Logmile 0.51	Rt. 00230	Sect/Zone - 7
Date Drawn 9/17/20		RRJ / BDS

Form IV

DECKING

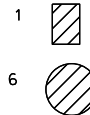
SPAN	TYPE	ET	AT	CT	TT	MAT'L
<u>1</u>	<u>3</u>	<u> </u>	<u>.7"</u>	<u>7 1/4"</u>	<u> </u>	<u>2</u>
<u>2</u>	<u>3</u>	<u> </u>	<u>.7"</u>	<u>7 1/4"</u>	<u> </u>	<u>2</u>
<u>3</u>	<u>9</u>	<u> </u>	<u>.7"</u>	<u>8 1/2"</u>	<u> </u>	<u>2</u>
<u>4</u>	<u>3</u>	<u> </u>	<u>.7"</u>	<u>7 1/4"</u>	<u> </u>	<u>2</u>
<u>5</u>	<u>3</u>	<u> </u>	<u>.7"</u>	<u>7 1/4"</u>	<u> </u>	<u>2</u>

STRINGERS OR GIRDERS

TYPES	MATERIALS	SPAN	SHAPE	MAT'L	SW	SD	FT	H	J	K	S
3. TIMBER GIRDER & CONC. DECK	1. TIMBER	<u>1</u>	<u>1</u>	<u>1</u>	<u>6"</u>	<u>13"</u>	<u>SEE</u>	<u> </u>	<u> </u>	<u> </u>	<u>15.0'</u>
	2. CONCRETE	<u>2</u>	<u>1</u>	<u>1</u>	<u>6"</u>	<u>13"</u>	<u> </u>	<u> </u>	<u> </u>	<u> </u>	<u>19.0'</u>
9. THRU TRUSS & CONC. DECK	3. STEEL	<u>3</u>	<u>Truss</u>	<u>3</u>	<u>SEE</u>	<u>SKETCH</u>	<u> </u>	<u>SKETCH</u>	<u> </u>	<u> </u>	<u>101.3'</u>
		<u>4</u>	<u>1</u>	<u>1</u>	<u>6"</u>	<u>13"</u>	<u> </u>	<u> </u>	<u> </u>	<u> </u>	<u>19.0'</u>
		<u>5</u>	<u>1</u>	<u>1</u>	<u>6"</u>	<u>13"</u>	<u> </u>	<u> </u>	<u> </u>	<u> </u>	<u>15.0'</u>

SUBSTR. TYPE
2. STUB OR OPEN
3. PILE INTER. BT.

SHAPE CODE



SUBSTRUCTURE /CAPS

BENT	MAT'L	TYPE	BW	X	BD
<u>1</u>	<u>1</u>	<u>2</u>	<u>13"</u>	<u> </u>	<u>12"</u>
<u>2</u>	<u>1</u>	<u>3</u>	<u>12 1/2"</u>	<u> </u>	<u>12 1/2"</u>
<u>3</u>	<u>2</u>	<u>3</u>	<u>SEE</u>	<u> </u>	<u> </u>
<u>4</u>	<u>2</u>	<u>3</u>	<u>SKETCH</u>	<u> </u>	<u> </u>
<u>5</u>	<u>1</u>	<u>3</u>	<u>12"</u>	<u> </u>	<u>12"</u>
<u>6</u>	<u>1</u>	<u>2</u>	<u>12 1/2"</u>	<u> </u>	<u>13"</u>

DIAPHRAGM
SHAPE DW DD DS
<u> </u> <u>N</u> <u>0</u> <u>N</u> <u>E</u>

RAILING
SPAN NO MAT'L SHAPE
<u>All</u> <u>3</u> <u>8</u>

SUBSTRUCTURE /PILES

BENT	MAT'L	SHAPE	CR	P	O	R
<u>1</u>	<u>1</u>	<u>6</u>	<u>38"</u>	<u>4</u>	<u>5.6'</u>	<u>22.4'</u>
<u>2</u>	<u>1</u>	<u>6</u>	<u>37"</u>	<u>4</u>	<u>5.6'</u>	<u>22.4'</u>
<u>3</u>	<u>1</u>	<u>6</u>	<u>SEE SKETCH</u>	<u> </u>	<u> </u>	<u> </u>
<u>4</u>	<u>1</u>	<u>6</u>	<u>SEE SKETCH</u>	<u> </u>	<u> </u>	<u> </u>
<u>5</u>	<u>1</u>	<u>6</u>	<u>37"</u>	<u>4</u>	<u>5.67'</u>	<u>22.7'</u>
<u>6</u>	<u>1</u>	<u>6</u>	<u>37"</u>	<u>4</u>	<u>5.6'</u>	<u>22.4'</u>

TYPES

1. TIMBER GIRDER & PLANK DECK
2. TIMBER GIRDER & LAMIN. DECK
3. TIMBER GIRDER & CONC. DECK
4. STEEL GIRDER & PLANK DECK
5. STEEL GIRDER & LAMIN. DECK
6. STEEL GIRDER & CONC. DECK
7. R. C. DECK GIRDER
8. R.C. SLAB

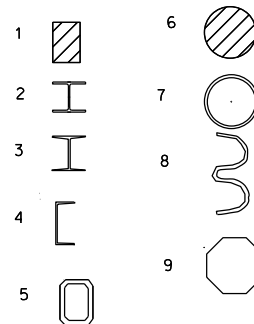
MATERIALS

1. TIMBER
2. CONCRETE
3. STEEL
4. ALUMINUM

SUBSTR. TYPE

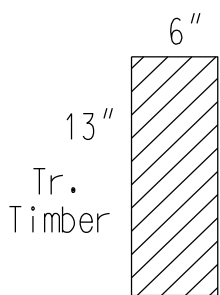
1. FULL HEIGHT
2. STUB OR OPEN
3. PILE INTER. BT.
4. SINGLE COLUMN
5. TWO COLUMN
6. THREE COLUMN
7. SOLID WALL PIER

SHAPE CODE



AT= ASPHALT THICKNESS (INCHES)
CT= CONCRETE THICKNESS (INCHES)
TT= TIMBER THICKNESS (INCHES)
ET= GRAVEL OR SOIL DEPTH (INCHES)
BD= BENT CAP DEPTH (INCHES)
BW= BENT CAP WIDTH (INCHES)

TR= TIMBER RUNNER THICKNESS (INCHES)
DW= DIAPHRAGM WIDTH (INCHES)
DD= DIAPHRAGM DEPTH (INCHES)
DS= DIAPHRAGM SPACING (FEET)
CR= COLUMN CIRCUMFERENCE (INCHES)



Girder Spacing Spans 1,2,4 & 5

Span 1 sp. length= 15.0'

A 2.0' A 1.8' A 1.7' A 1.6' A 1.8' A 1.7' A 1.5' A 1.8' A 1.7' A 1.6' A 1.6' A 1.7' A 1.6' A 1.6' A

Span 2 sp. length= 19.0'

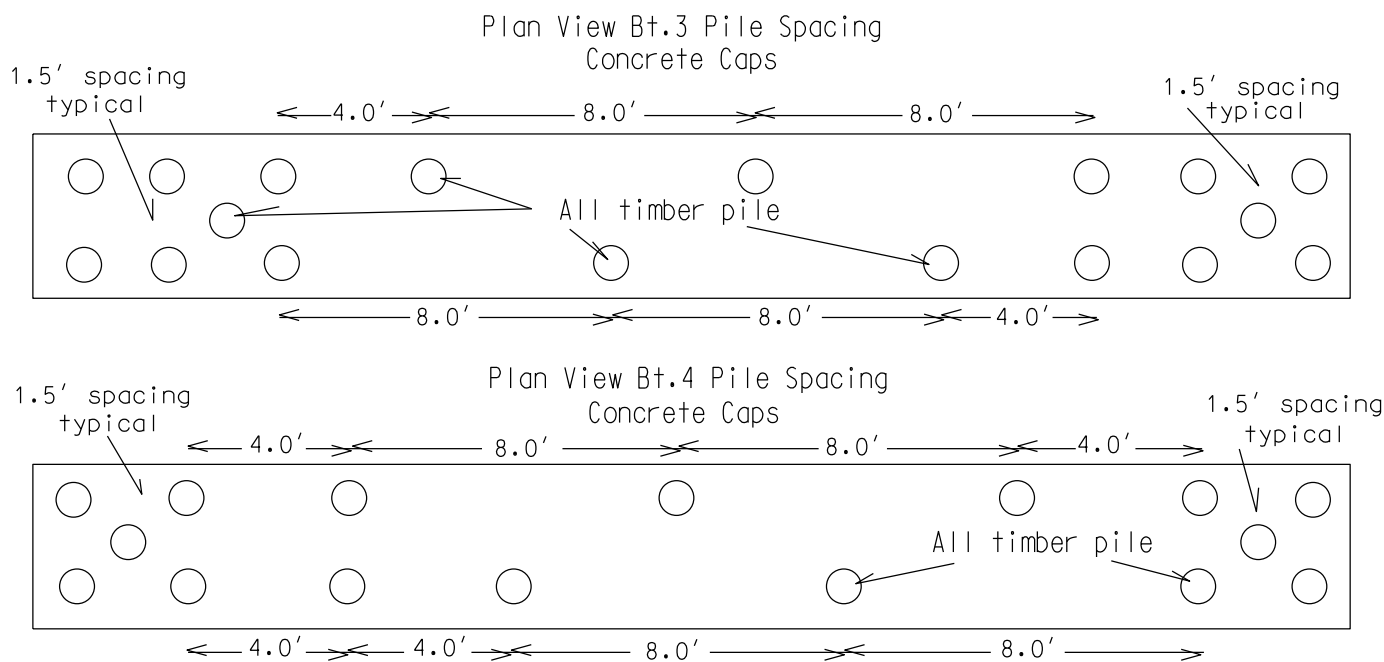
A 1.4' A 1.7' A 1.9' A 1.4' A 1.6' A 1.8' A 1.6' A 1.6' A 1.7' A 1.5' A 1.9' A 1.6' A 1.8' A 1.9' A

Span 4 sp. length= 19.0'

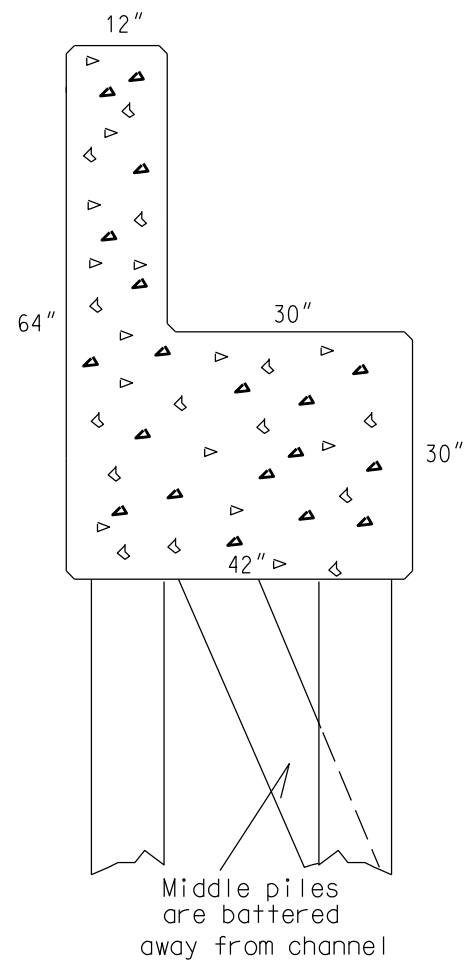
A 1.7' A 1.8' A 1.8' A 1.7' A 1.7' A 1.8' A 1.5' A 1.8' A 1.7' A 1.6' A 1.7' A 1.7' A 1.6' A 1.4' A

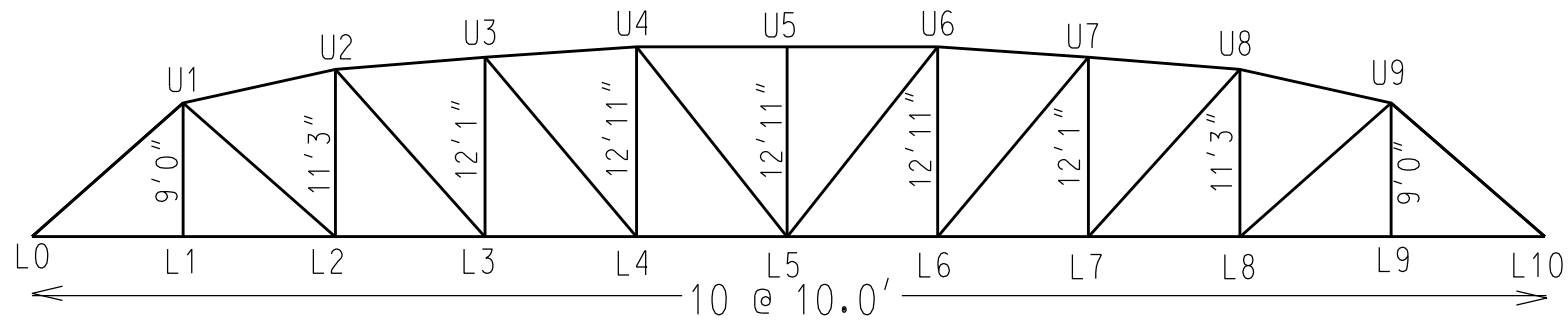
Span 5 sp. length= 15.0'

A 1.2' A 1.8' A 1.7' A 1.7' A 1.7' A 1.8' A 1.6' A 1.7' A 1.7' A 1.7' A 1.7' A 1.7' A 1.6' A 1.9' A



Side View Bents 3 & 4





Truss Members

Upper Chord

Dimensions

℞ 20"x 3/8" (common to all)

2 Channels 12"x3" FT=1/2" WT=5/16" L0-U1, U1-U2, U8-U9 & U9-L10

2 Channels 12"x 3 1/8" FT=1/2" WT=1/2" U2-U3, U3-U4, U6-U7 & U7-U8

2 Channels 12"x 3 1/2" FT=5/8" WT=7/16" U4-U5 & U5-U6

Bottom Chord

2 Channels 12"x3" FT=1/2" WT=5/16" L0-L1, L1-L2, L8-L9 & L9-L10

2 Channels 12"x 3 1/8" FT=1/2" WT=1/2" L2-L3, L3-L4, L6-L7 & L7-L8

2 Channels 12"x 3 1/2" FT=5/8" WT=7/16" L4-L5 & L5-L6

Verticals

I-Beams 12"x 6 1/2" FT=5/8" WT=1/4" (All Members)

Diagonals

I-Beams 12"x 6 1/2" FT=3/8" WT=1/4" (All Members)

Floor Beams(11)

I-Beams 29 7/8"x 10 1/2" FT= 3/4" WT= 9/16" (All 11)

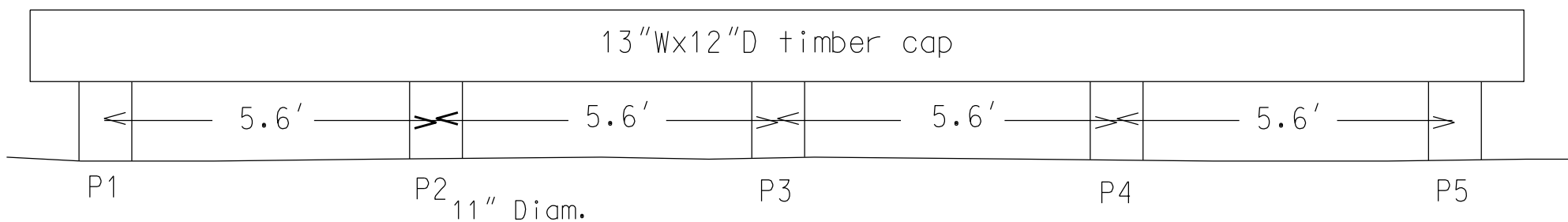
Lower X-Bracing

Angles 4"x 3" 3/8"

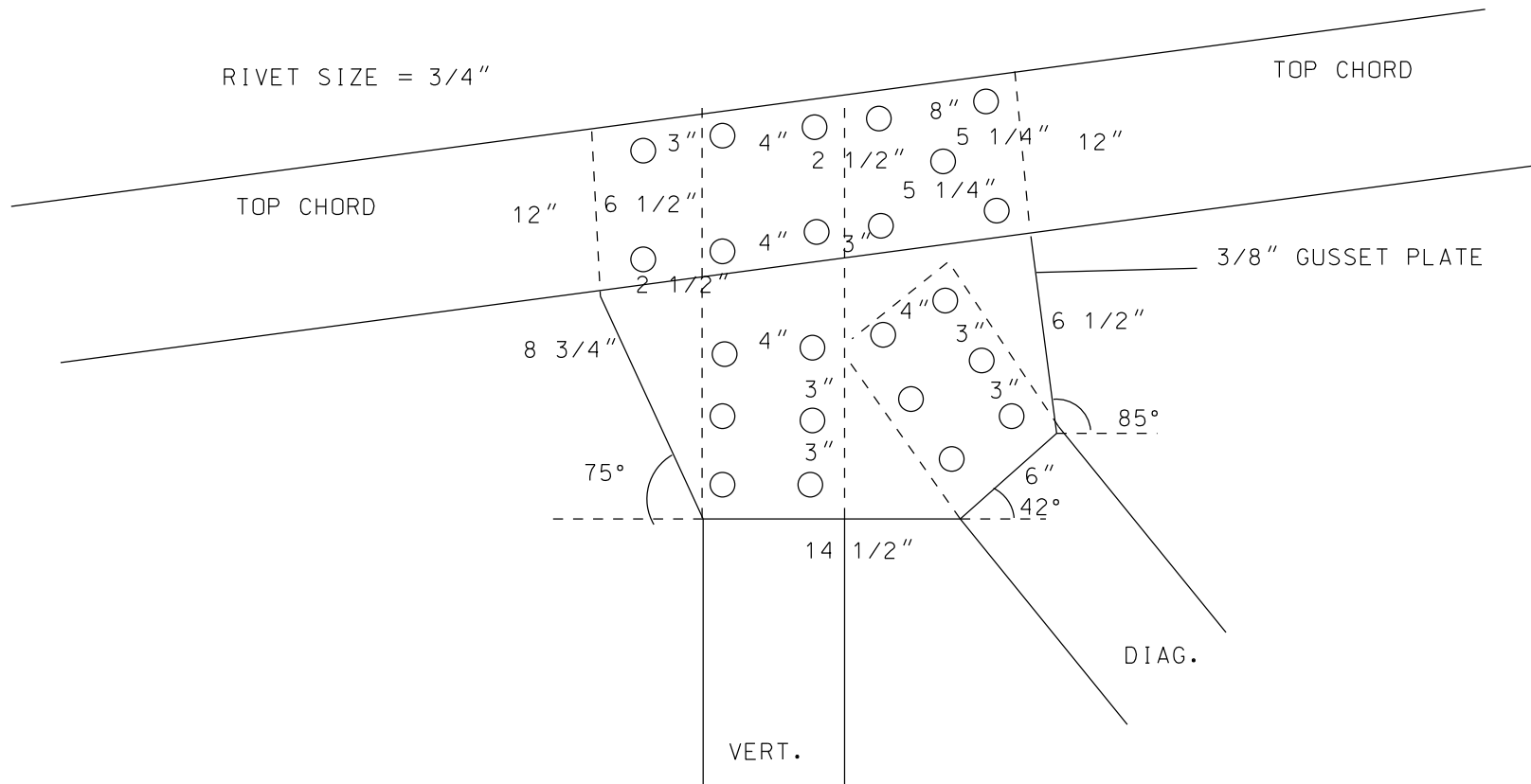
Deck

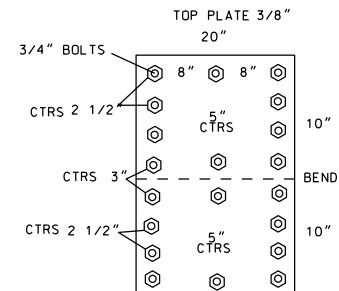
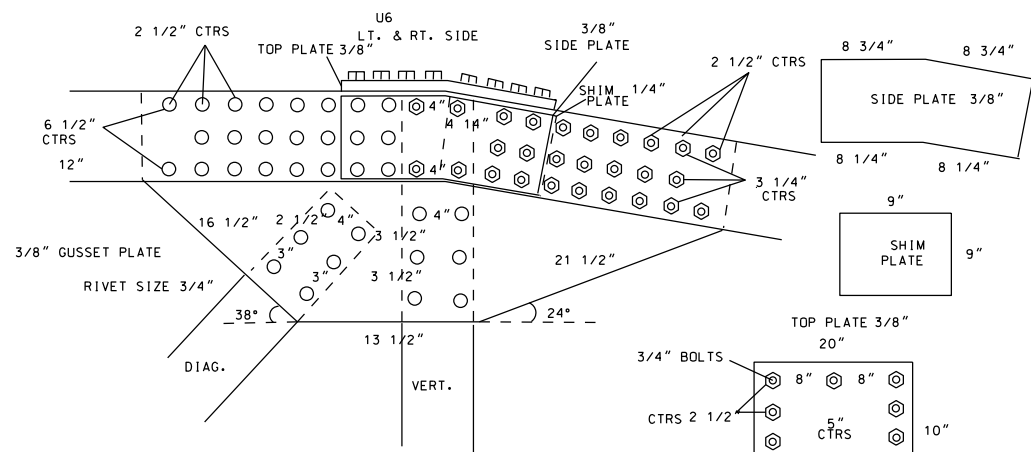
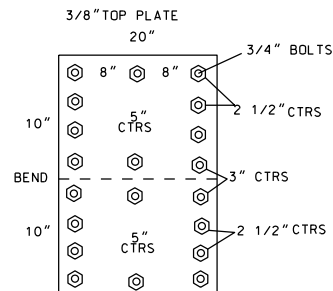
8 1/2" Concrete

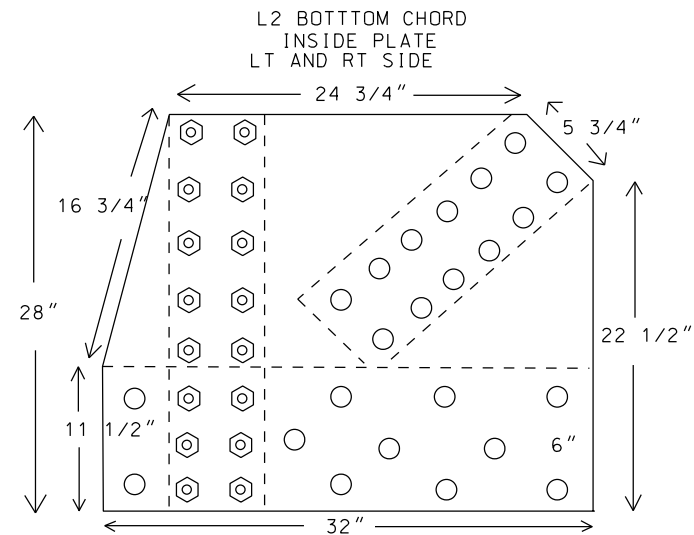
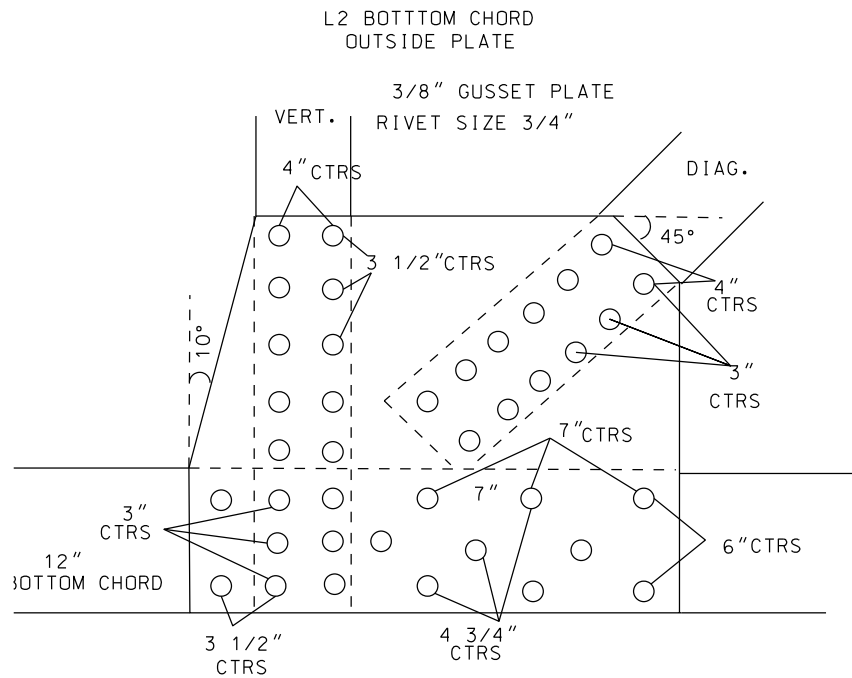
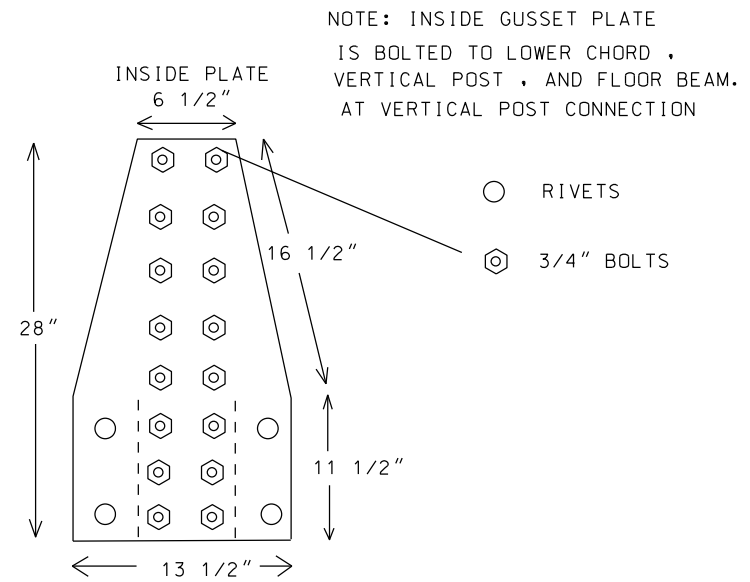
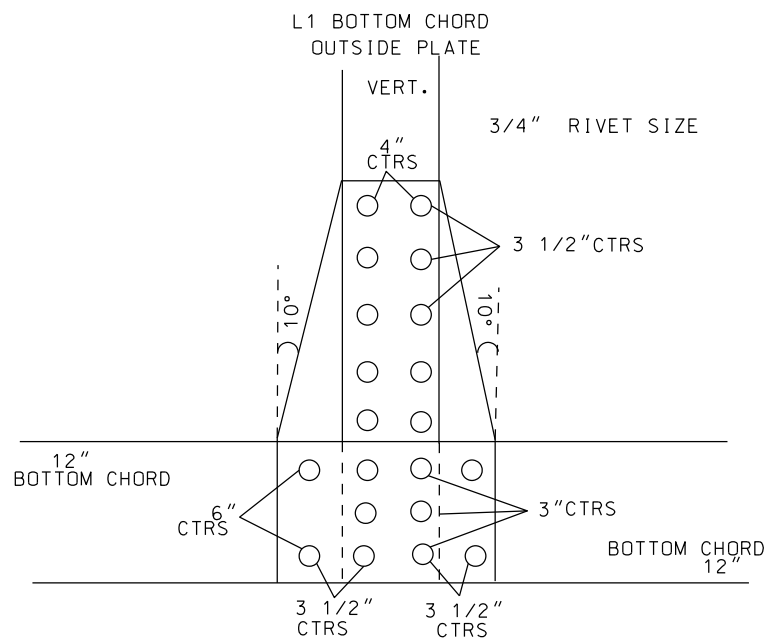
Bt.1 Substructure



U3 & U7
LT. & RT. SIDE





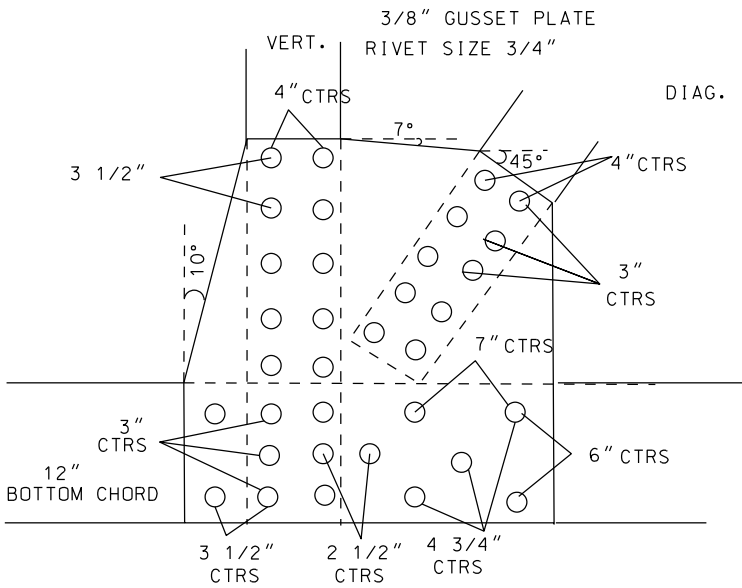


○ RIVETS

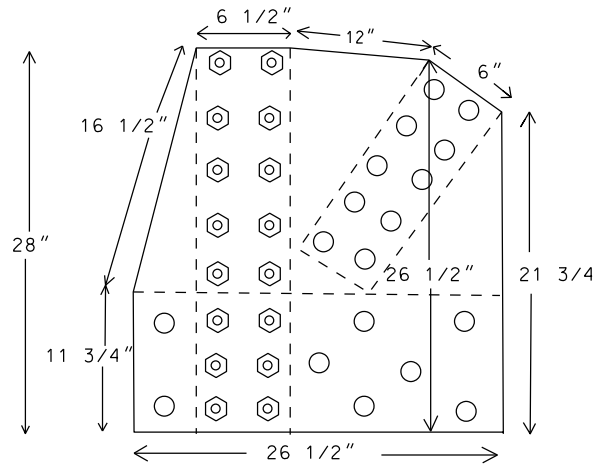
⊗ 3/4" BOLTS

NOTE: INSIDE GUSSET PLATE
IS BOLTED TO LOWER CHORD,
VERTICAL POST, AND FLOOR BEAM.
AT VERTICAL POST CONNECTION

L3 BOTTOM CHORD
OUT SIDE PLATE



L3 BOTTOM CHORD
INSIDE PLATE
LT AND RT

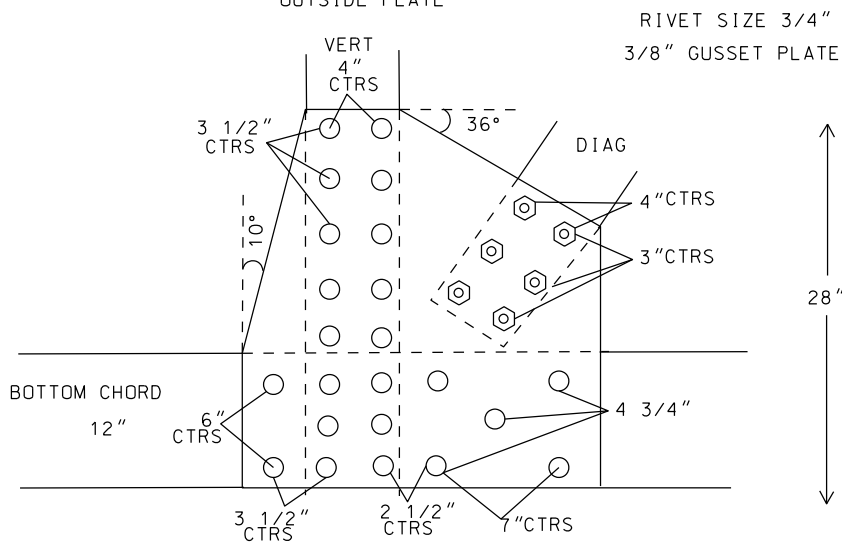


○ RIVETS

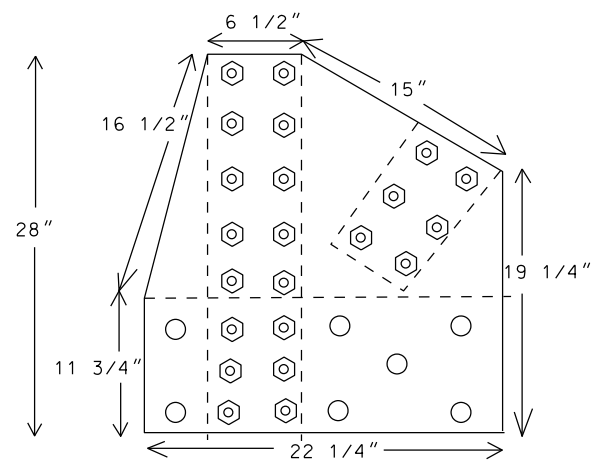
⊗ 3/4" BOLTS

NOTE: INSIDE GUSSET PLATE
IS BOLTED TO LOWER CHORD ,
VERTICAL POST , AND FLOOR BEAM.
AT VERTICAL POST CONNECTION

L4 BOTTOM CHORD
OUTSIDE PLATE



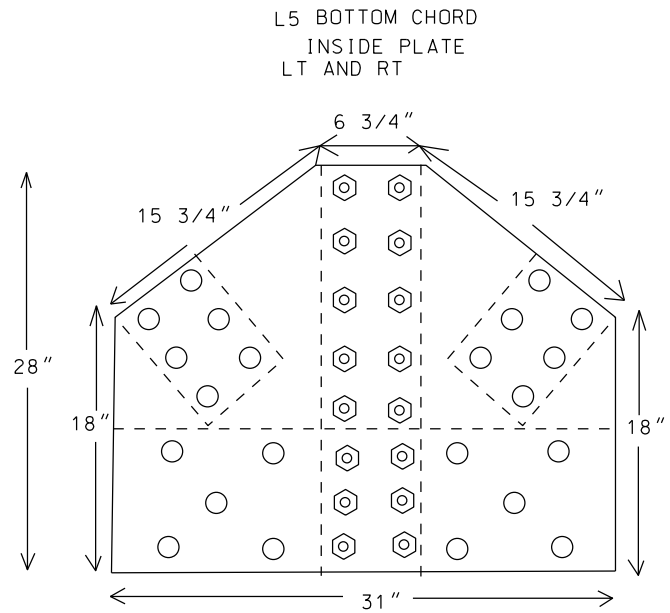
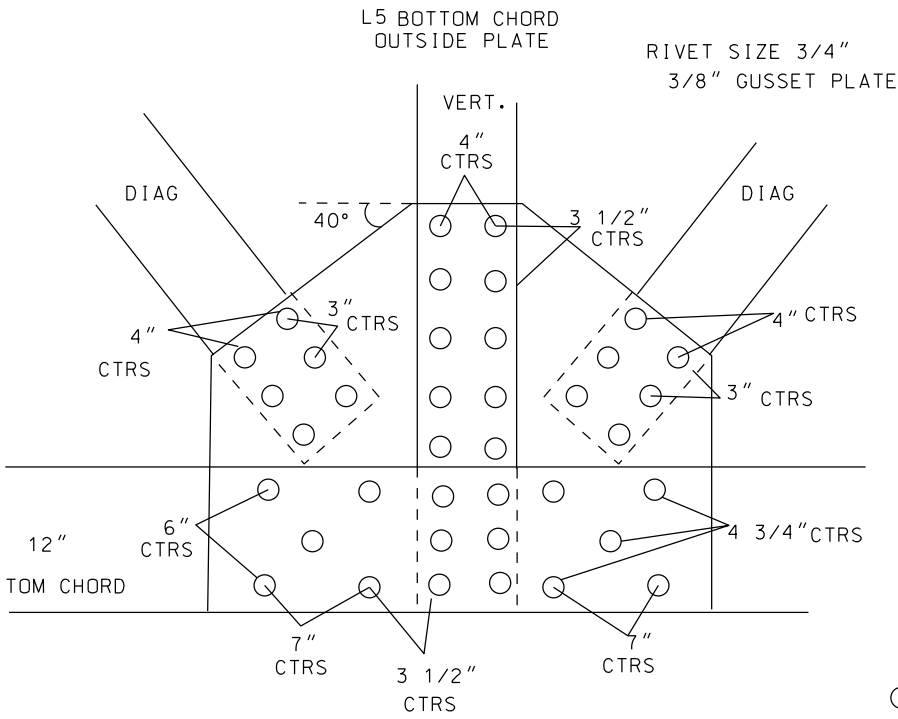
L4 BOTTOM CHORD
INSIDE PLATE
LT AND RT



○ RIVETS

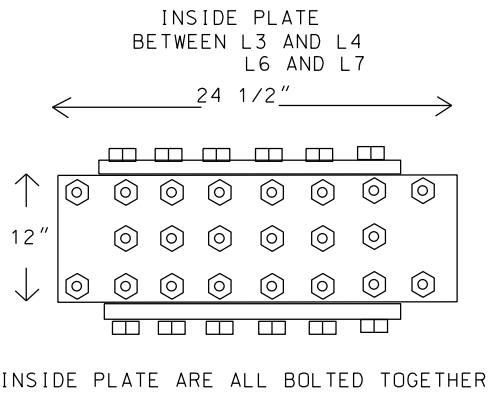
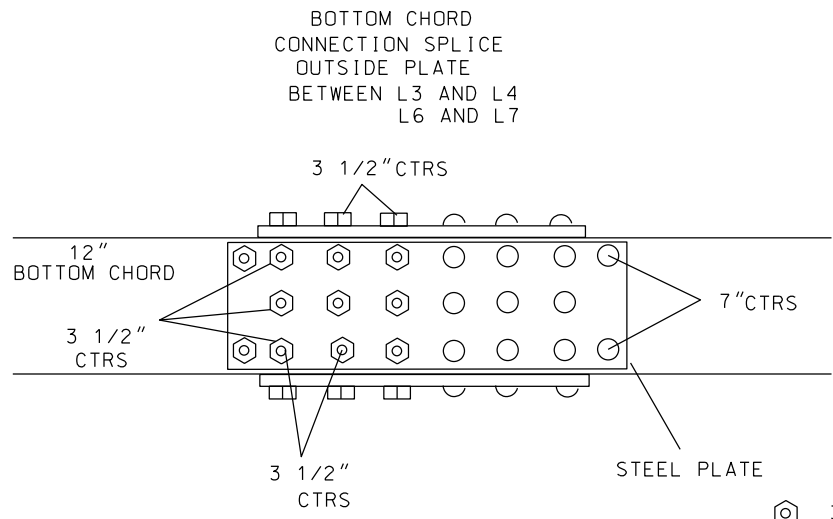
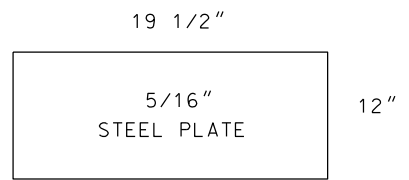
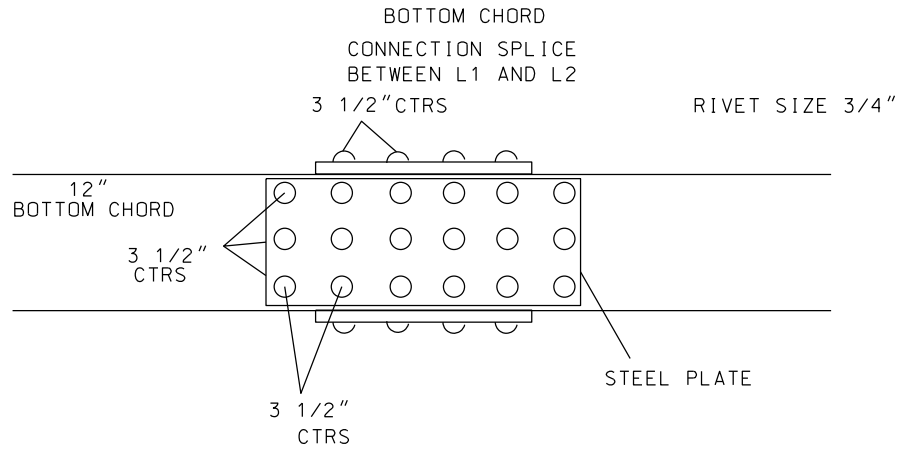
⊗ 3/4" BOLTS

NOTE: INSIDE GUSSET PLATE
IS BOLTED TO LOWER CHORD ,
VERTICAL POST , AND FLOOR BEAM.
AT VERTICAL POST CONNECTION



- RIVETS
- ⊗ 3/4" BOLTS

NOTE: INSIDE GUSSET PLATE
IS BOLTED TO LOWER CHORD ,
VERTICAL POST , AND FLOOR BEAM.
AT VERTICAL POST CONNECTION



- ⊗ 3/4" BOLTS
- RIVETS