



Latitude:36.28236, Longitude:-90.93302

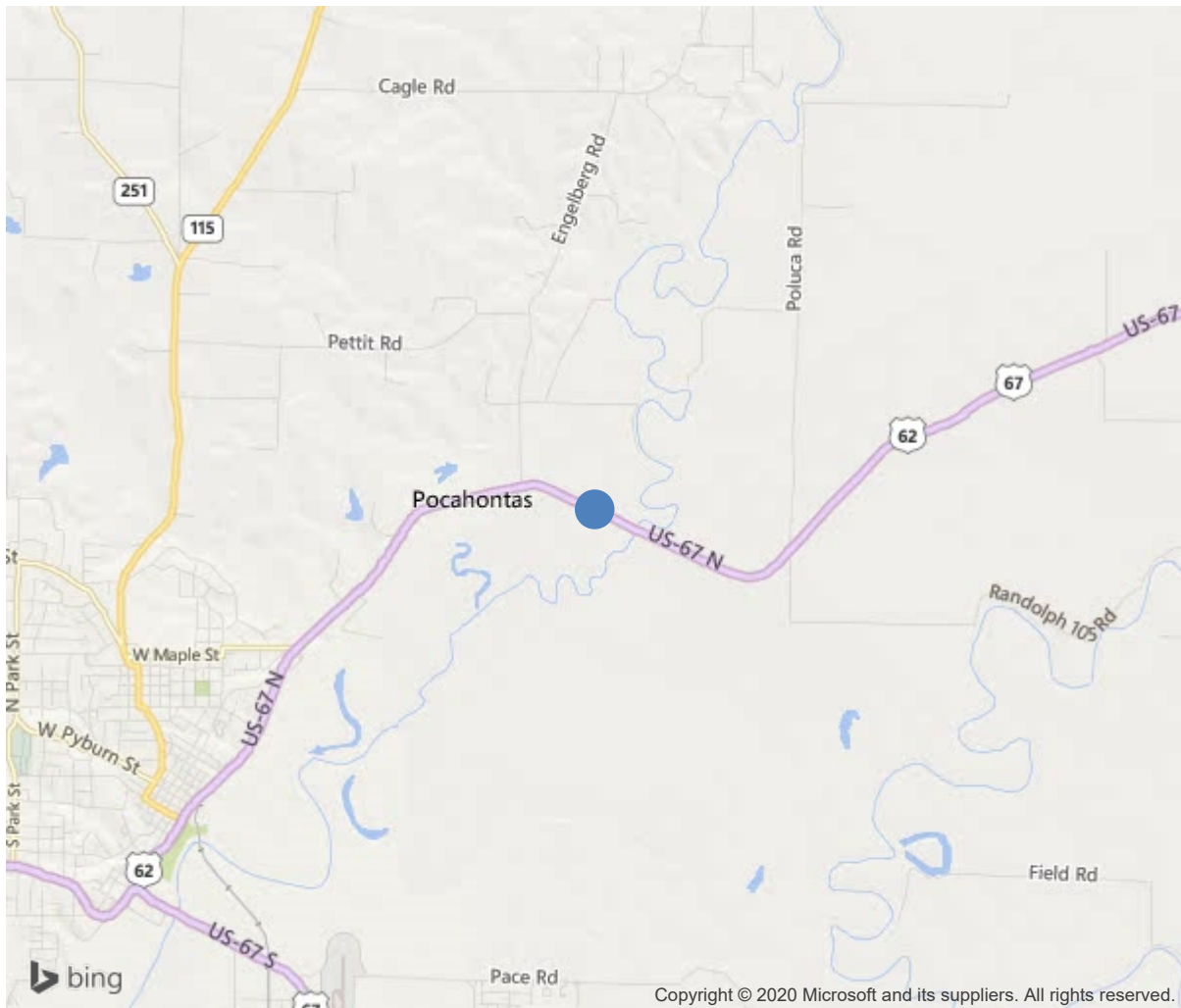
Route:67 Section:19 Log:3.23

Arnold Road ID:61x67x19xA, Arnold Log mile:3.222

District 10, Randolph County

Owner: 1-State Highway Agency

3.17 MI NE JCT US 62 & 67



36.28236, -90.93302



Bridge #00503(Accident)
US 67-19- LM 3.23 over FOURCHE RELIEF
Location: 3.17 MI NE JCT US 62 & 67

Team Lead: Richard Jones Inspection Date: March 12, 2019

IDENTIFICATION	
(1) State Names	Arkansas
(8) Structure Number	00503
(5) Inventory Route	67
(2) Highway Agency District	10
(3) County Code	121-Randolph County, Arkansas
(4) Place Code	0
(6) Features Intersected	FOURCHE RELIEF
(7) Facility Carried	US 67-19- LM 3.23
(9) Location	3.17 MI NE JCT US 62 & 67
(11) Mile Point	3.23 mi
(12) Base Highway Network	Yes
(13) LRS Inventory Rte & Subrte	0000067190
(16) Latitude	36.28236
(17) Longitude	-90.93302
(98) Border Bridge State Code	
(99) Border Bridge Structure No.	
STRUCTURE TYPE AND MATERIAL	
(43) Main Structure Type	14
Material	1-Concrete
Type	4-Tee beam
(44) Approach Structure Type	00
Material	0-Other
Type	0-Other
(45) No. of Spans in Main Unit	4
(46) No. of Approach Spans	0
(107) Deck Structure Type	1-Concrete Cast-in-Place
(108) Wearing Surface/Protective System	
Type of Wearing Surface	6-Bituminous
Type of Membrane	0-None
Type of Deck Protection	0-None
AGE AND SERVICE	
(27) Year Built	1928
(106) Year Reconstructed	1955
(42) Type of Service	19
On	1-Highway
Under	9-Relief for waterway
(28) Lane	
On	2
Under	0
(29) Average Daily Traffic	6600
(30) Year of ADT	2018
(109) Truck ADT	1 %
(19) Bypass, Detour Length	10 mi
GEOMETRIC DATA	
(48) Length of Maximum Span	31 ft
(49) Structure Length	122 ft
(50) Curb or Sidewalk Width	
Left	1.2 ft
Right	1.2 ft
(51) Bridge Roadway Width Curb to Curb	28 ft
(52) Deck Width Out to Out	31.5 ft
(32) Approach Roadway Width (W/Shoulders)	44 ft
(33) Bridge Median	0-No median
(34) Skew	0 Deg
(35) Structure Flared	No flare
(10) Inventory Route Min Vert Clear	99.99 ft
(47) Inventory Route Total Horiz Clear	27.9 ft
(53) Min Vert Clear Over Bridge Rdwy	99.99 ft
(54) Min Vert Underclear	0 ft
Ref:	
(55) Min Lat Underclear RT	99.9 ft
Ref:	
(56) Min Lat Underclear LT	0 ft
NAVIGATION DATA	
(38) Navigation Control	0-No navigation control on water
(111) Pier Protection	5-None present but re-evaluation
(39) Navigation Vertical Clearance	0 ft
(116) Vert-Lift Bridge Nav Min Vert Clear	0 ft
(40) Navigation Horizontal Clearance	0 ft

CLASSIFICATION			
(112) NBIS Bridge Length			Y
(104) Highway System			1
(26) Functional Class	2-Rural Principal Arterial - Oth		
(100) Defense Highway	0-The inventory route is not a S		
(101) Parallel Structure	N-No parallel structure exists.		
(102) Direction of Traffic	2 - way traffic		
(103) Temporary Structure			
(105) Federal Lands Highways			0-N/A
(110) Designated National Network	1-The inventory route is part of the		
(20) Toll	3-On free road. The structure is toll-		
(21) Maintain	1-State Highway Agency		
(22) Owner	1-State Highway Agency		
(37) Historical Significance	5-Bridge is not eligible for the NRHP		
CONDITION			
(58) Deck			7
(59) Superstructure			7
(60) Substructure			6
(61) Channel & Channel Protection			7
(62) Culverts			N
LOAD RATING AND POSTING			
(31) Design Load			4-M 18 / H 20
(63) Operating Rating Method			1
(64) Operating Rating			
Type		1-Load Factor(LF)	
Rating			60
(65) Inventory Rating Method		1-Load Factor(LF)	
(66) Inventory Rating			
Type			4
Rating			36
(70) Bridge Posting	5-Equal to or above legal loads		
(41) Structure Open/Posted/Closed	A-Open, no restriction		
APPRAISAL			
(67) Structural Evaluation			6
(68) Deck Geometry			4
(69) Clearances, Vertical/Horizontal			N
(71) Waterway Adequacy			9
(72) Approach Roadway Alignment			8
(36) Traffic Safety Features			0000
A) Bridge Railings	0-Inspected feature does not meet cur		
B) Transitions	0-Inspected feature does not meet cur		
C) Approach Guardrail	0-Inspected feature does not meet cur		
D) Approach Guardrail Ends	0-Inspected feature does not meet cur		
(113) Scour Critical Bridges	5-Bridge foundations determined to be		
PROPOSED IMPROVEMENTS			
(75) Type of Work	Replacement of bridge or other		
(76) Length of Structure Improvement	150 ft		
(94) Bridge Improvement Cost	\$ 0		
(95) Roadway Improvement Cost	\$ 400		
(96) Total Project Cost	\$ 1023		
(97) Year of Improvement Cost Estimate	2001		
(114) Future ADT	5436		
(115) Year of Future ADT	2028		
INSPECTIONS			
(90) Inspection Date			201905
(91) Frequency			24 Months
(92) Critical Feature Inspection	Done	Freq. (Mon)	Date
A: Fracture Critical Detail	No	24	
B: Underwater Inspection	No	0	
C: Other Special Inspection	No	0	

SUFFICIENCY RATING	75.6
STATUS (SD/FO/None)	Not Deficient



Bridge #00503(Accident)
US 67-19- LM 3.23 over FOURCHE RELIEF

Location: 3.17 MI NE JCT US 62 & 67

Team Lead: Brandon Sutton, **Inspection Date:** March 12, 2019

ELEM	DESCRIPTION	UNITS	TOTAL	CS1	CS2	CS3	CS4
16	Reinforced Concrete Top Flange	SF	3843	3843	0	0	0
510	Wearing Surfaces	SF	3416	2966	0	450	0
3220	Crack (Wearing Surface)	SF	450	0	0	450	0
110	Reinforced Concrete Open Girder/Beam	LF	732	725	0	7	0
1130	Cracking (RC and Other)	LF	7	0	0	7	0
215	Reinforced Concrete Abutment	LF	76	76	0	0	0
227	Reinforced Concrete Pile	EA	18	17	1	0	0
1130	Cracking (RC and Other)	EA	1	0	1	0	0
234	Reinforced Concrete Pier Cap	LF	83	80	3	0	0
1090	Exposed Rebar	LF	3	0	3	0	0
311	Movable Bearing	EA	6	6	0	0	0
330	Metal Bridge Railing	LF	224	224	0	0	0





Bridge #00503(Accident)

US 67-19- LM 3.23 over FOURCHE RELIEF

Location: 3.17 MI NE JCT US 62 & 67

Team Lead: Richard Jones **Inspection Date:** March 12, 2019

Maintenance Needs



Bridge #00503(Accident)
US 67-19- LM 3.23 over FOURCHE RELIEF
Location: 3.17 MI NE JCT US 62 & 67

Team Lead: Richard Jones Inspection Date: March 12, 2019

Deck Notes

On 3/6/19 a West bound 18 wheeler hit the Lt bridge rail at spans 1 – 3 and the Lt approach rail at beginning end of bridge. District bridge crew replaced approach rail, bridge rail, and several bridge rail posts on 3/11/19 and 3/12/19. No other damage to bridge was noted. Other notes left from previous inspection. Concrete deck with asphalt overlay. The wearing surface has moderate to heavy map cracking in wheel path, also over joints.

Superstructure Notes

Span 1 outside Girders 1 & 6 over bent 2, span 3 outside girders 1 & 6 over bent 4 and span 4 outside girder 1 over bent 4 each have moderate to wide diagonal / vertical cracks on end over caps. Girder 6 over Bents 2 & 4 grouted but still cracked. Several concrete diaphragms between girders over caps have moderate to heavy cracking. Steel masonry plates on Bt. 3 under outside girders 1 and 6 are rusted with pitting.

Substructure Notes

Bent 4 Pile 6, top 5 ft. of pile has minor to moderate size vertical cracks.