



Latitude:36.03212, Longitude:-91.22711

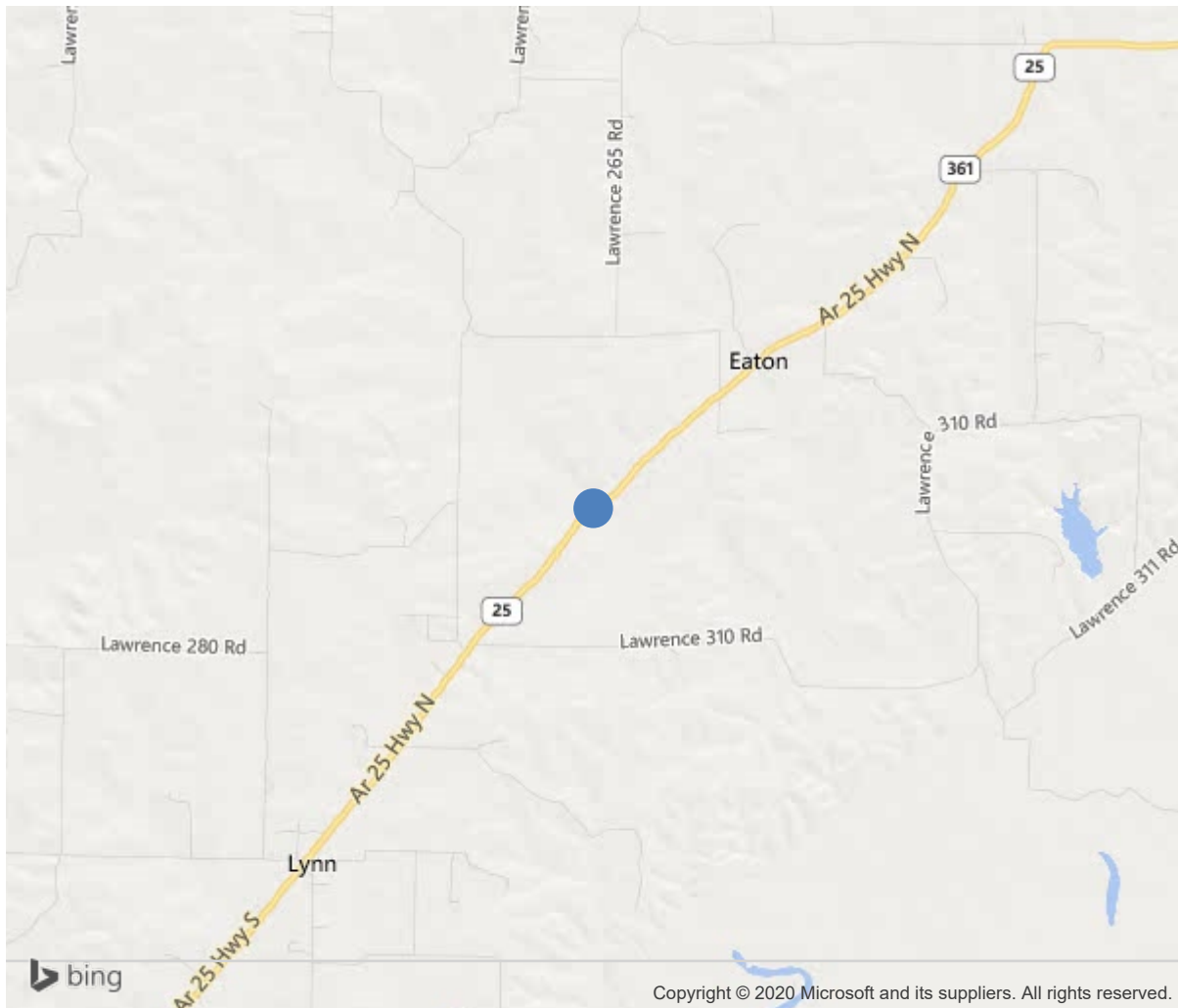
Route:25 Section:06 Log:13.27

Arnold Road ID:38x25x6xA, Arnold Log mile:13.268

District 10, Lawrence County

Owner: 1-State Highway Agency

13.46 M NE INDEPENDENCE C



36.03212, -91.22711



Bridge #02923(Routine)

SH 25-06- LM 13.27 over CYPRESS CREEK

Location: 13.46 M NE INDEPENDENCE C

Team Lead: James Adams Inspection Date: September 04, 2019

IDENTIFICATION	
(1) State Names	Arkansas
(8) Structure Number	02923
(5) Inventory Route	25
(2) Highway Agency District	10
(3) County Code	75-Lawrence County, Arkansas
(4) Place Code	0
(6) Features Intersected	CYPRESS CREEK
(7) Facility Carried	SH 25-06- LM 13.27
(9) Location	13.46 M NE INDEPENDENCE C
(11) Mile Point	13.27 mi
(12) Base Highway Network	Yes
(13) LRS Inventory Rte & Subrte	0000025060
(16) Latitude	36.03212
(17) Longitude	-91.22711
(98) Border Bridge State Code	
(99) Border Bridge Structure No.	
STRUCTURE TYPE AND MATERIAL	
(43) Main Structure Type	122
Material	1-Concrete
Type	22-Channel beam
(44) Approach Structure Type	00
Material	0-Other
Type	0-Other
(45) No. of Spans in Main Unit	5
(46) No. of Approach Spans	0
(107) Deck Structure Type	2-Concrete Precast Panels
(108) Wearing Surface/Protective System	
Type of Wearing Surface	6-Bituminous
Type of Membrane	0-None
Type of Deck Protection	0-None
AGE AND SERVICE	
(27) Year Built	1953
(106) Year Reconstructed	0
(42) Type of Service	15
On	1-Highway
Under	5-Waterway
(28) Lane	
On	2
Under	0
(29) Average Daily Traffic	1800
(30) Year of ADT	2018
(109) Truck ADT	1 %
(19) Bypass, Detour Length	4 mi
GEOMETRIC DATA	
(48) Length of Maximum Span	19 ft
(49) Structure Length	95 ft
(50) Curb or Sidewalk Width	
Left	0 ft
Right	0 ft
(51) Bridge Roadway Width Curb to Curb	24 ft
(52) Deck Width Out to Out	25 ft
(32) Approach Roadway Width (W/Shoulders)	24.9 ft
(33) Bridge Median	0-No median
(34) Skew	0 Deg
(35) Structure Flared	No flare
(10) Inventory Route Min Vert Clear	99.99 ft
(47) Inventory Route Total Horiz Clear	25.6 ft
(53) Min Vert Clear Over Bridge Rdwy	99.99 ft
(54) Min Vert Underclear	0 ft
Ref:	
(55) Min Lat Underclear RT	99.9 ft
Ref:	
(56) Min Lat Underclear LT	0 ft
NAVIGATION DATA	
(38) Navigation Control	0-No navigation control on water
(111) Pier Protection	5-None present but re-evaluation
(39) Navigation Vertical Clearance	0 ft
(116) Vert-Lift Bridge Nav Min Vert Clear	0 ft
(40) Navigation Horizontal Clearance	0 ft

CLASSIFICATION	
(112) NBIS Bridge Length	Y
(104) Highway System	0
(26) Functional Class	6-Rural Minor Arterial
(100) Defense Highway	0-The inventory route is not a S
(101) Parallel Structure	N-No parallel structure exists.
(102) Direction of Traffic	2 - way traffic
(103) Temporary Structure	
(105) Federal Lands Highways	0-N/A
(110) Designated National Network	0-The inventory route is not part of
(20) Toll	3-On free road. The structure is toll-
(21) Maintain	1-State Highway Agency
(22) Owner	1-State Highway Agency
(37) Historical Significance	5-Bridge is not eligible for the NRHP
CONDITION	
(58) Deck	5
(59) Superstructure	5
(60) Substructure	6
(61) Channel & Channel Protection	7
(62) Culverts	N
LOAD RATING AND POSTING	
(31) Design Load	2-M 13.5 / H 15
(63) Operating Rating Method	1
(64) Operating Rating	
Type	1-Load Factor(LF)
Rating	38
(65) Inventory Rating Method	1-Load Factor(LF)
(66) Inventory Rating	
Type	5
Rating	23
(70) Bridge Posting	5-Equal to or above legal loads
(41) Structure Open/Posted/Closed	A-Open, no restriction
APPRAISAL	
(67) Structural Evaluation	5
(68) Deck Geometry	4
(69) Clearances, Vertical/Horizontal	N
(71) Waterway Adequacy	8
(72) Approach Roadway Alignment	8
(36) Traffic Safety Features	0000
A) Bridge Railings	0-Inspected feature does not meet cur
B) Transitions	0-Inspected feature does not meet cur
C) Approach Guardrail	0-Inspected feature does not meet cur
D) Approach Guardrail Ends	0-Inspected feature does not meet cur
(113) Scour Critical Bridges	8-Bridge foundations determined to be
PROPOSED IMPROVEMENTS	
(75) Type of Work	Replacement of bridge or other
(76) Length of Structure Improvement	122 ft
(94) Bridge Improvement Cost	\$ 0
(95) Roadway Improvement Cost	\$ 156
(96) Total Project Cost	\$ 446
(97) Year of Improvement Cost Estimate	2004
(114) Future ADT	1499
(115) Year of Future ADT	2028
INSPECTIONS	
(90) Inspection Date	201909
(91) Frequency	24 Months
(92) Critical Feature Inspection	Done Freq. (Mon) Date
A: Fracture Critical Detail	No 24
B: Underwater Inspection	No 0
C: Other Special Inspection	No 0

SUFFICIENCY RATING	54.5
STATUS (SD/FO/None)	Not Deficient



Bridge #02923(Routine)

SH 25-06- LM 13.27 over CYPRESS CREEK

Location: 13.46 M NE INDEPENDENCE C

Team Lead: Cory Shaw, Inspection Date: September 04, 2019

ELEM	DESCRIPTION	UNITS	TOTAL	CS1	CS2	CS3	CS4
16	Reinforced Concrete Top Flange	SF	2375	2366	0	9	0
1090	Exposed Rebar	SF	9	0	0	9	0
510	Wearing Surfaces	SF	2280	1979	27	274	0
3220	Crack (Wearing Surface)	SF	274	0	0	274	0
3210	Delam/Spall/Patched Area/Pothole	SF	27	0	27	0	0
110	Reinforced Concrete Open Girder/Beam	LF	665	96	317	252	0
1090	Exposed Rebar	LF	252	0	0	252	0
1130	Cracking (RC and Other)	LF	317	0	317	0	0
205	Reinforced Concrete Column	EA	12	7	0	5	0
1090	Exposed Rebar	EA	3	0	0	3	0
1130	Cracking (RC and Other)	EA	2	0	0	2	0
234	Reinforced Concrete Pier Cap	LF	177	176	1	0	0
1090	Exposed Rebar	LF	1	0	1	0	0
330	Metal Bridge Railing	LF	190	0	190	0	0
1000	Corrosion	LF	190	0	190	0	0
515	Steel Protective Coating	SF	646	646	0	0	0



Span 2 unit 7 2019



Drift LT SIDE



Drift Span 3 LT SIDE 2019



Span 2 soffit 2019



Deck



Roadway



**Bridge #02923**(Routine)

**SH 25-06- LM 13.27 over CYPRESS CREEK**

**Location: 13.46 M NE INDEPENDENCE C**

**Team Lead:** James Adams **Inspection Date:** September 04, 2019

## **Maintenance Needs**



---

## Deck Notes

Both approach roadways have up to 1.5 in. of settlement. Bridge Rail has up to 90% paint deterioration with surface rust. Asphalt overlay has a few cracks between units with a small spall in asphalt wearing surface. Bottom of deck span 2 unit 7 has a 3ft. x 3ft. honeycomb area with exposed rebar, see 2019 photo.

---

## Superstructure Notes

Girder portion of precast concrete deck units have longitudinal cracking, 2in. to 3in. up from bottom of girders with some spalls with exposed rebar, see 2017 photo of Span 4:

Span 1 unit 1 has 19ft. of cracks  
Span 1 unit 2 has 15ft. of exposed rebar & 4ft. of cracks  
Span 1 unit 3 has 15ft. of cracks  
Span 1 unit 4 has 10ft. of cracks  
Span 1 unit 5 has 10ft. of cracks  
Span 1 unit 6 has 12ft. of exposed rebar & 7ft. of cracks  
Span 1 unit 7 has 15ft. of cracks  
Span 2 unit 1 has 3 ft. of exposed rebar & 15ft. of cracks  
Span 2 unit 2 has 18ft. of exposed rebar & 1ft. of cracks  
Span 2 unit 3 has 17ft. of exposed rebar & 2ft. of cracks  
Span 2 unit 4 has 8ft. of exposed rebar & 11ft. of cracks  
Span 2 unit 5 has 15ft. of exposed rebar & 4ft. of cracks  
Span 2 unit 6 has 1 ft. of exposed rebar & 6ft. of cracks  
Span 2 unit 7 has 3ft. of exposed rebar & 15ft. of cracks  
Span 3 unit 1 has 15ft. of exposed rebar & 4ft. of cracks  
Span 3 unit 2 has 9 ft. of exposed rebar & 10ft. of cracks  
Span 3 unit 3 has 10ft. of exposed rebar & 9ft. of cracks  
Span 3 unit 4 has 15ft. of exposed rebar & 4ft. of cracks  
Span 3 unit 5 has 10ft. of exposed rebar & 9ft. of cracks  
Span 3 unit 6 has 2ft. of exposed rebar & 17ft. of cracks  
Span 3 unit 7 has 10ft. of exposed rebar & 9ft. of cracks  
Span 4 unit 1 has 12ft. of exposed rebar & 7ft. of cracks  
Span 4 unit 2 has 5ft. of exposed rebar & 14ft. of cracks  
Span 4 unit 3 has 9ft. of exposed rebar & 10ft. of cracks  
Span 4 unit 4 has 15ft. of exposed rebar & 4ft. of cracks  
Span 4 unit 5 has 4ft. of exposed rebar & 15ft. of cracks  
Span 4 unit 6 has 8ft. of exposed rebar & 3ft. of cracks  
Span 4 unit 7 has 3ft. of exposed rebar & 4ft. of cracks  
Span 5 unit 1 has 15ft. of cracks  
Span 5 unit 2 has 10ft. of exposed rebar & 9ft. of cracks  
Span 5 unit 3 has 15ft. of exposed rebar & 4ft. of cracks  
Span 5 unit 4 has 6ft. of exposed rebar & 10ft. of cracks  
Span 5 unit 5 has 19ft. of cracks  
Span 5 unit 6 has 19ft. of cracks  
Span 5 unit 7 has 2 ft. of exposed rebar & 17ft. of cracks  
Some concrete diaphragms are cracked and spalled with exposed rebar.

---

## Substructure Notes



**Bridge #02923**(Routine)

**SH 25-06- LM 13.27 over CYPRESS CREEK**

**Location: 13.46 M NE INDEPENDENCE C**

**Team Lead:** James Adams **Inspection Date:** September 04, 2019

Bent 5 cap right end has 1 ft. of exposed rebar. Bent 3 columns 1&2 has some exposed rebar. Bent 4 column 2 has some exposed rebar. Bent 5 columns 1&2 are cracked. Large drift across & under spans 3, 4 & 5, see 2019 photos. Footings are keyed into solid rock.