

Bridge Inspection Report

02881
SH 77-02- LM 6.34
over
LITTLE RIVER



Inspection Date:

Inspected By:

Inspection Type(s):

Inspector:

Structure Number: 02881

Inspection Date:

Facility Carried: SH 77-02- LM 6.34

Bridge Inspection Report

National Bridge Inventory

IDENTIFICATION						INSPECTIONS			
(1) STATE CODE	056 - Arkansas					(90) INSPECTION DATE	10/11/2016		
(8) STRUCTURE NUMBER	02881					(91) DESIGNATED INSPECTION FREQUENCY	24		
(5) INV. ROUTE (ON/UNDER)	1	3	1	77	0	(92) CRITICAL FEATURE INSPECTION		(93) CFI DATE	
(2) HIGHWAY AGENCY	10	(3) COUNTY CODE	093			A. FRACTURE CRITICAL DETAIL	N		
(4) PLACE CODE	00000					B. UNDERWATER INSPECTION	N		
(6) FEATURES INTERSECTED	LITTLE RIVER					C. OTHER SPECIAL	Y	24	08/11/2015
(7) FACILITY CARRIED	SH 77-02- LM 6.34					CONDITION			
(9) LOCATION	.5 MI N JCT OF SH 158					(58) DECK	5		
(11) MILEPOINT	6.340	(12) BASE HIGHWAY NETWORK	0			(59) SUPERSTRUCTURE	5	(60) SUBSTRUCTURE	4
(13A) LRS INVENTORY ROUTE	0000000000	(13B) SUBROUTE NUMBER	00			(61) CHANNEL & CHANNEL PROTECTION	7	(62) CULVERT	N
(16) LATITUDE	35.78396	(17) LONGITUDE	-90.17815			LOAD RATING AND POSTING			
(98A) BORDER BRIDGE CODE						(31) DESIGN LOAD	2		
PERCENT RESPONSIBILITY	(99) BORDER BRIDGE STRUCT					(63) METHOD USED TO DETERMINE OPERATING RATING	1		
STRUCTURE TYPE AND MATERIAL						(64) OPERATING RATING	46.0		
(43) STRUCTURE TYPE, MAIN						(65) METHOD USED TO DETERMINE INVENTORY RATING	1		
A) KIND OF MATERIAL/DESIGN:	3 - Steel					(66) INVENTORY RATING	28.0		
B) TYPE OF DESIGN/CONSTR:	02 - Stringer/Multi-beam or Girder					(70) BRIDGE POSTING	5		
(44) STRUCTURE TYPE, APPROACH SPANS						(41) STRUCTURE OPEN/POSTED/CLOSED	A		
A) KIND OF MATERIAL/DESIGN:	0 - Other					APPRAISAL			
B) TYPE OF DESIGN/CONSTR:	00 - Other					(67) STRUCTURAL EVALUATION	4		
(45) NUMBER OF SPANS IN MAIN	9	(46) NUMBER OF APPROACH	0			(68) DECK GEOMETRY	4		
(107) DECK STRUCTURE TYPE	1	(108A) WEARING SURFACE	6			(69) UNDERCLEARANCES, VERTICAL & HORIZONTAL	N		
(108B) DECK MEMBRANE	0	(108C) DECK PROTECTION	0			(71) WATERWAY ADEQUACY	9		
AGE OF SERVICE						(72) APPROACH ROADWAY ALIGNMENT	8		
(27) YEAR BUILT	1954	(106) YEAR RECONSTRUCTED	0000			(36) TRAFFIC SAFETY FEATURE			
(42) TYPE OF SERVICE	ON 1	UNDER 9				36A) BRIDGE RAILINGS:	0		
(28) LANES	ON 02	UNDER 00				36B) TRANSITIONS:	0		
(29) AVERAGE DAILY TRAFFIC	1500	(19) BYPASS DETOUR LENGTH	24			36C) APPROACH GUARDRAIL:	0		
(30) YEAR OF AVERAGE DAILY TRAFFIC	2014					36D) APPROACH GUARDRAIL ENDS:	0		
(109) AVERAGE DAILY TRUCK TRAFFIC	1					(113) SCOUR CRITICAL BRIDGES	5		
GEOMETRIC DATA						SUFFICIENCY RATING	1	STATUS	42.1
(48) LENGTH OF MAX SPAN (ft.)	40	(49) STRUCTURE LENGTH (ft.)	362			CLASSIFICATION			
(50) CURB/SIDEWALK WIDTHS (ft.)	LEFT 1	RIGHT 1				(112) NBIS BRIDGE LENGTH	Y		
(51) BRDG RDWY WIDTH CURB-TO-CURB (ft.)		24.0				(104) HIGHWAY SYSTEM OF THE INVENTORY ROUTE	0		
(52) DECK WIDTH, OUT-TO-OUT (ft.)		28.5				(26) FUNCTIONAL CLASSIFICATION OF INVENTORY ROUTE	07		
(32) APPROACH ROADWAY WIDTH (ft.)		27.9				(100) STRAHNET HIGHWAY DESIGNATION	0		
(33) BRIDGE MEDIAN	0	(34) SKEW (DEG.)	0			(101) PARALLEL STRUCTURE DESIGNATION	N		
(35) STRUCTURE FLARED	0	(10) INV RTE, MIN VERT CLEAR (ft.)	99.99			(102) DIRECTION OF TRAFFIC	2		
(47) TOTAL HORIZONTAL CLEARANCE (ft.)		25.9				(103) TEMP STRUCTURE			
(53) VERTICAL CLEARANCE OVER BRIDGE ROADWAY (ft.)		99.99				(105) FEDERAL LANDS HIGHWAYS	0		
(54) VERTICAL UNDER CLEARANCE (ft.)		N	0			(110) DESIGNATED NATIONAL NETWORK	0		
(55) LATERAL UNDER CLEARANCE RIGHT (ft.)		N	99.9			(20) TOLL	3		
(56) MIN LATERAL UNDER CLEARANCE (ft.)		0				(21) MAINTENANCE RESPONSIBILITY	01		
PROPOSED IMPROVEMENTS						(22) OWNER	01		
(75A) TYPE OF WORK PROPOSED	31	(75B) WORK DONE BY	1			(37) HISTORICAL	5		
(76) LENGTH OF STRUCTURE IMPROVEMENT (ft.)	399.0					NAVIGATION DATA			
(94) BRIDGE IMPROVEMENT COST (\$)		0				(38) NAVIGATION CONTROL	0		
(95) ROADWAY IMPROVEMENT COST (\$)		117				(111) PIER OR ABUTMENT PROTECTION	5		
(96) TOTAL PROJECT COST		760				(39) NAV VERT CLEARANCE (ft.)	0		
(97) YEAR OF IMPROVEMENT COST ESTIMATE		2003				(116) MIN NAVIGATION VERT CLEARANCE, VERT LIFT BRIDGE (ft.)	0		
(114) FUTURE ADT	1586	(115) YEAR OF FUTURE ADT	2028			(40) NAV HORIZONTAL CLEARANCE (ft.)	0		

Inspector:

Structure Number: 02881

Inspection Date:

Facility Carried: SH 77-02- LM 6.34

Bridge Inspection Report

Element Inspection

	Environment	Total Quantity	Units	Condition State 1	Condition State 2	Condition State 3	Condition State 4
12 - Reinforced Concrete Deck	1- Ben.	10320	sq. ft.	8473	240	1607	0
1080 - Delamination/Spall/Patched Area		1243				1243	
1090 - Exposed Rebar		27				27	
1120 - Efflorescence/Rust Staining		191				191	
1130 - Cracking (RC and Other)		146				146	
1190 - Abrasion/Wear (PSC/RC)		240			240		
510 - Wearing Surfaces		7604	sq. ft.	6478	0	1126	0
3210 - Delamination/Spall/Patched Area/Pothole (Wearing Surfaces)		324				324	
3220 - Crack (Wearing Surface)		802				802	
107 - Steel Open Girder/Beam	1- Ben.	1800	ft.	259	1036	490	15
1000 - Corrosion		1541			1036	490	15
515 - Steel Protective Coating		13421	sq. ft.	0	2338	7638	3445
3440 - Effectiveness (Steel Protective Coatings)		13421			2338	7638	3445
215 - Reinforced Concrete Abutment	1- Ben.	66	ft.	0	46	20	0
	Bent 1 & Bent 10 Abutments have moderate slope erosion from roadway runoff causing undermining of abutments, Bent 1 has up to 1ft. x 1ft. length of Cap and Bent 10 has up to 2ft. x 5ft. see 2015 photos.						
6000 - Scour		66			46	20	
227 - Reinforced Concrete Pile	1- Ben.	40	each	40			

Inspector:

Structure Number: 02881

Inspection Date:

Facility Carried: SH 77-02- LM 6.34

Bridge Inspection Report

Element Inspection

234 - Reinforced Concrete Pier Cap	1- Ben.	198	ft.	82	30	86	0
<p>Right End of Bent 2 Concrete Cap has a 1ft. X 1ft. X 2in. deep spall with exposed rebar, see 2015 deficiency photo.</p> <p>Span 1 side of Bent 2 Concrete Cap over Pile 3 has a 1.5ft. X 2ft. X 1 1/2in. deep spall with exposed rebar, reinforcement has 40% loss of section, see 2015 deficiency photo.</p> <p>Left end of Bent 2 Concrete Cap has a spall near Girder 1, 12in. x 6in. x 1 1/2in. deep and a spall near Pile 1, 12in. x 6in. x 3in. deep with exposed rebar, see 2015 photo.</p> <p>Top of Cap Bent 2 Between girders 1&2 is spalled with deterioration and retaining water, up to a 1 1/2in. deep.</p> <p>Left End of Bent 3 Concrete Cap has a 2ft. X 1ft. X 2in. deep spall with exposed rebar, see 2015 deficiency photo.</p> <p>Spans 2&3 side of Bent 3 Concrete Cap under the right side of Bearing 3 has a 3in. deep void on top of cap.</p> <p>Span 3 side under Bearing 3 Bent 4 Concrete Cap has a 2.5ft. X 1ft. X 6in. deep spall with 40% loss of bearing area, see 2015 deficiency photo.</p> <p>Span 4 Between Girders 4&5 Bent 4 Concrete Cap has a 3ft. X 2ft. X 3in. deep spall with exposed rebar, see 2015 deficiency photo.</p> <p>Bottom of Concrete Cap Bent 4 between Piles 4&5 has a 3ft. X 1ft. X 3in. deep spall with exposed rebar, see 2015 photo.</p> <p>Right End of Bottom of Concrete Cap Bent 6 at Pile 5 has a 4ft. X 1ft. X 3in. deep spall with exposed rebar, see 2015 photo.</p> <p>Top of Concrete Cap Bent 6 has moderate deterioration of 1 1/2 inches deep with section loss, (water retention on top of Cap), no exposed rebar, See 2013 & 2015 photo.</p> <p>Span 7 side at Bearing 2 of Concrete Cap Bent 7 has a 3ft X 1ft X 3inch deep spall with exposed rebar; see 2015 photo – Also, Top of Cap has deterioration between Girders 1&2, up to 2in. deep.</p> <p>Top & Bottom of Concrete Cap Bent 8 has heavy deterioration especially at bearings 2&3, see 2015 photo.</p> <p>Span 8 side of Bent 9 Cap and Bottom of Cap Bent 9 has rebar exposed due to lack of steel coverage, see 2015 photo.</p>							
1080 - Delamination/Spall/Patched Area		40				40	
1090 - Exposed Rebar		26				26	
1120 - Efflorescence/Rust Staining		20				20	
1130 - Cracking (RC and Other)		30			30		
304 - Open Expansion Joint	1- Ben.	285	ft.	285			
311 - Movable Bearing	1- Ben.	45	each	0	0	45	0
1000 - Corrosion		45				45	
313 - Fixed Bearing	1- Ben.	45	each	0	0	45	0
1000 - Corrosion		45				45	
333 - Other Bridge Railing	1- Ben.	725	ft.	0	649	76	0
1000 - Corrosion		649			649		
1080 - Delamination/Spall/Patched Area		25				25	
1130 - Cracking (RC and Other)		51				51	

Inspector:

Inspection Date:

Structure Number: 02881

Facility Carried: SH 77-02- LM 6.34

Bridge Inspection Report

Pictures



Inspector:

Structure Number: 02881

Inspection Date:

Facility Carried: SH 77-02- LM 6.34

Bridge Inspection Report

Maintenance Needs

Date Reported: 10/26/2011 12:00:00 AM

Priority: C - Important

Work Code:

Deficiency Description:

Steel Girders

60% paint deterioration and rust with pitting.

3 ft. on ends of Majority of Girders have rust with 1/8 in. sect. loss on bottom flange and web at concrete haunch.

Work Description:

Date Repairs Completed:

Maintenance Comments:

Inspector:

Structure Number: 02881

Inspection Date:

Facility Carried: SH 77-02- LM 6.34

Bridge Inspection Report

Maintenance Needs

Date Reported: 10/26/2011 12:00:00 AM

Priority: C - Important

Work Code:

Deficiency Description:

Span 8 has a 12ft. X 1ft. X 4in. deep spall with exposed rebar on right Overhang, see 2016 deficiency Photo.

Work Description:

Date Repairs Completed:

Maintenance Comments:

Stage: Monitor



PHOTO 1 Description

Inspector:

Structure Number: 02881

Inspection Date:

Facility Carried: SH 77-02- LM 6.34

Bridge Inspection Report

Maintenance Needs

Date Reported: 10/26/2011 12:00:00 AM

Priority: C - Important

Work Code:

Deficiency Description:

Span 6 Girder 2 over Bent 6
Is floating with a 1/8in. gap.

Work Description:

Date Repairs Completed:

Maintenance Comments:

Inspector:

Structure Number: 02881

Inspection Date:

Facility Carried: SH 77-02- LM 6.34

Bridge Inspection Report

Maintenance Needs

Date Reported: 10/26/2011 12:00:00 AM

Priority: G - General/ Preventive maintenance

Work Code:

Deficiency Description:

Span 7 Girder 1

Is rusted with 1/8in. loss of section on web and bottom flange, mainly near drains, see 2016 deficiency photo.

Span 9 Girder 4 over Bent 10 has a knife edge in bottom flange near bearing, see 2016 photo.

Work Description:

Date Repairs Completed:

Maintenance Comments:

Stage: Monitor



PHOTO 1 Description

Stage: Monitor



PHOTO 2 Description

Inspector:

Structure Number: 02881

Inspection Date:

Facility Carried: SH 77-02- LM 6.34

Bridge Inspection Report

Maintenance Needs

Date Reported: 10/24/2012 12:00:00 AM

Priority: C - Important

Work Code:

Deficiency Description:

Span 3 Girder 2 Bent 4
Has 2 anchor bolts rusted off.

Work Description:

Date Repairs Completed:

Maintenance Comments:

Stage: Monitor



PHOTO 1 Description

Inspector:

Structure Number: 02881

Inspection Date:

Facility Carried: SH 77-02- LM 6.34

Bridge Inspection Report

Maintenance Needs

Date Reported: 10/24/2012 12:00:00 AM

Priority: G - General/ Preventive maintenance

Work Code:

Deficiency Description:

Concrete Deck Gutter lines

Exposed concrete in Gutter Lines has several small spalls and impending spalls with delamination

Work Description:

Date Repairs Completed:

Maintenance Comments:

Date Reported: 10/24/2012 12:00:00 AM

Priority: C - Important

Work Code:

Deficiency Description:

Bearings

Are rusted with pitting, some section loss and pack rust between masonry plate and bearing.

Work Description:

Date Repairs Completed:

Maintenance Comments:

Inspector:

Structure Number: 02881

Inspection Date:

Facility Carried: SH 77-02- LM 6.34

Bridge Inspection Report

Maintenance Needs

Date Reported: 10/24/2012 12:00:00 AM

Priority: C - Important

Work Code:

Deficiency Description:

Bent 1 & Bent 10 Abutments have moderate slope erosion from roadway runoff causing undermining of abutments:
Bent 1 Abutment has some embankment erosion near center line
Bent 10 has up to 20ft. length of concrete x 2ft. high and up to 6ft. back under abutment, see 2016 photos.

Work Description:

Date Repairs Completed:

Maintenance Comments:

Stage: Open



PHOTO 1 Description Bent 1 erosion.

Stage: Monitor



PHOTO 2 Description

Inspector:

Inspection Date:

Structure Number: 02881

Facility Carried: SH 77-02- LM 6.34

Bridge Inspection Report

Maintenance Needs

Stage: Monitor



PHOTO 3 Description

Stage: Open



PHOTO 4 Description Bent 10 abutment embankment erosion.

Inspector:

Structure Number: 02881

Inspection Date:

Facility Carried: SH 77-02- LM 6.34

Bridge Inspection Report

Maintenance Needs

Date Reported: 10/24/2012 12:00:00 AM

Priority: G - General/ Preventive maintenance

Work Code:

Deficiency Description:

Bottom of Deck, left and right Overhangs
Has several small shell areas with some exposed rebar.

Bottom of Deck
Has several cracks with efflorescence, especially Spans 1, 5 & 7.

Work Description:

Date Repairs Completed:

Maintenance Comments:

Date Reported: 10/24/2012 12:00:00 AM

Priority: C - Important

Work Code:

Deficiency Description:

Majority of anchor bolts and nuts
have up to 50 % section loss.

Work Description:

Date Repairs Completed:

Maintenance Comments:

Inspector:

Structure Number: 02881

Inspection Date:

Facility Carried: SH 77-02- LM 6.34

Bridge Inspection Report

Maintenance Needs

Date Reported: 11/5/2013 12:00:00 AM

Priority: D - Routine

Work Code:

Deficiency Description:

Bent 6

Moderate deterioration to top of cap 1 1/2 in. deep with section loss, see photo 2013.

Work Description:

Date Repairs Completed:

Maintenance Comments:

Inspector:

Structure Number: 02881

Inspection Date:

Facility Carried: SH 77-02- LM 6.34

Bridge Inspection Report

Maintenance Needs

Date Reported: 10/9/2014 12:00:00 AM

Priority: B - Pressing; 6 month completion goal

Work Code:

Deficiency Description:

Span 9 Girder 2 over Bent 10 has 12in. X 1in. hole rusted thru web near bottom flange and a 2in. x 2in. hole in bottom right and left flange near bearing, see 2016 photo.

Work Description:

Date Repairs Completed:

Maintenance Comments:

Stage: Assigned



PHOTO 1 Description

Inspector:

Structure Number: 02881

Inspection Date:

Facility Carried: SH 77-02- LM 6.34

Bridge Inspection Report

Maintenance Needs

Date Reported: 10/9/2014 12:00:00 AM

Priority: G - General/ Preventive maintenance

Work Code:

Deficiency Description:

Dirt and Debris in Gutterlines.

Work Description:

Date Repairs Completed:

Maintenance Comments:

Date Reported: 10/9/2014 12:00:00 AM

Priority: D - Routine

Work Code:

Deficiency Description:

Concrete Deck with asphalt overlay
Has open cracks thru asphalt, especially at joints and with some impending spalls.

Work Description:

Date Repairs Completed:

Maintenance Comments:

Date Reported: 10/9/2014 12:00:00 AM

Priority: G - General/ Preventive maintenance

Work Code:

Deficiency Description:

All Concrete Caps
Have deterioration, cracking and efflorescence.

Work Description:

Date Repairs Completed:

Maintenance Comments:

Inspector:

Structure Number: 02881

Inspection Date:

Facility Carried: SH 77-02- LM 6.34

Bridge Inspection Report

Maintenance Needs

Date Reported: 10/9/2014 12:00:00 AM

Priority: D - Routine

Work Code:

Deficiency Description:

Span 8 side of Bent 9 Cap and Bottom of Cap Bent 9
Has rebar exposed due to lack of steel coverage.

Work Description:

Date Repairs Completed:

Maintenance Comments:

Inspector:

Structure Number: 02881

Inspection Date:

Facility Carried: SH 77-02- LM 6.34

Bridge Inspection Report

Maintenance Needs

Date Reported: 10/11/2016

Priority: C - Important

Work Code:

Deficiency Description:

Span 1 Girder 3 over Bent 1 has a 1 1/2in. x 1/2in. hole in web at concrete haunch, see 2016 photo.

Span 3 Girder 3 over Bent 3 has a 2 1/2in. x 3/4in. hole in web at concrete haunch, see 2016 photo.

Span 5 Girder 1 over Bent 5 has a 1 1/2in. x 3in. hole in web at concrete haunch, see 2016 photo.

Span 7 Girder 1 is rusted with 1/8in. loss of section on web and bottom flange, mainly near drains, see 2016 photo.

Span 8 Girder 1 over Bent 8 has a 1in. diameter hole rusted thru web at concrete haunch, see 2016 photo.

Span 8 Girder 3 over Bent 8 has a 1in. x 1/2in. hole rusted thru web at concrete haunch, see 2016 photo.

Span 8 Girder 5 over Bent 8 has several holes making up an area of 4in. x 1in. hole rusted thru web at concrete haunch, see 2016 photo.

Span 8 Girder 2 over Bent 9 has a 3/4in diameter hole rusted thru web at concrete haunch, see 2016 photo.

Span 8 Girder 3 over Bent 9 has a 5in. X 1 1/4in. hole rusted thru web at concrete haunch, see 2016 photo.

Span 9 Girder 3 over Bent 10 has an 8in. X 1 1/4in. hole rusted thru web at concrete haunch, see 2016 photo.

Work Description:

Date Repairs Completed:

Maintenance Comments:

Stage: Open



PHOTO 1 Description

Stage: Open



PHOTO 2 Description

Inspector:

Structure Number: 02881

Inspection Date:

Facility Carried: SH 77-02- LM 6.34

Bridge Inspection Report

Maintenance Needs

Stage: Open



PHOTO 3 Description

Stage: Open



PHOTO 4 Description

Stage: Open



PHOTO 5 Description

Stage: Open

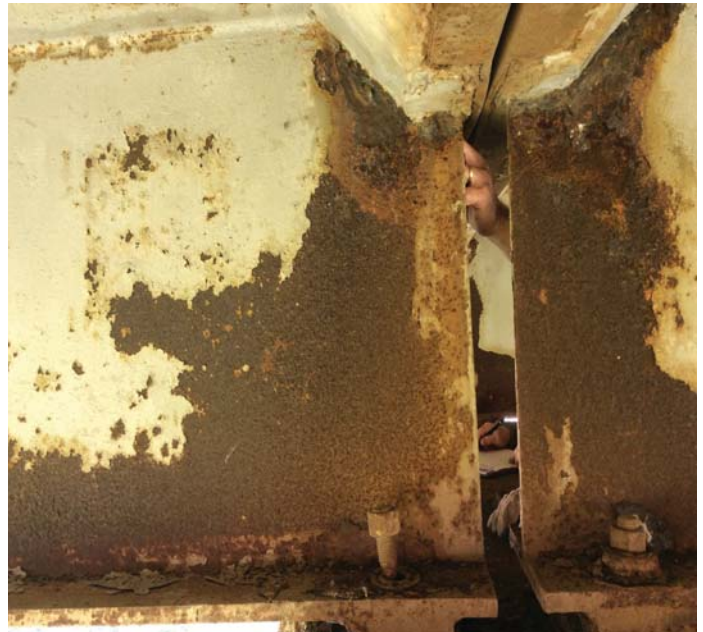


PHOTO 6 Description

Inspector:

Inspection Date:

Structure Number: 02881

Facility Carried: SH 77-02- LM 6.34

Bridge Inspection Report

Maintenance Needs

Stage: Open



PHOTO 7 Description

Stage: Open



PHOTO 8 Description

Inspector:

Structure Number: 02881

Inspection Date:

Facility Carried: SH 77-02- LM 6.34

Bridge Inspection Report

Maintenance Needs

Date Reported: 10/11/2016

Priority: C - Important

Work Code:

Deficiency Description:

Right End of Bent 2 Concrete Cap has a 1ft. X 1ft. X 2in. deep spall with exposed rebar, see 2015 deficiency photo.
Span 1 side of Bent 2 Concrete Cap over Pile 3 has a 1.5ft. X 2ft. X 1 1/2in. deep spall with exposed rebar, reinforcement has 40% loss of section, see 2015 deficiency photo.
Left end of Bent 2 Concrete Cap has a spall near Girder 1, 12in. x 6in. x 1 1/2in. deep and a spall near Pile 1, 12in. x 6in. x 3in. deep with exposed rebar, see 2015 photo.
Top of Cap Bent 2 Between girders 1&2 is spalled with deterioration and retaining water, up to a 1 1/2in. deep, spall is at the edge of bearing.
Left End of Bent 3 Concrete Cap has a 2ft. X 1ft. X 2in. deep spall with exposed rebar, see 2015 deficiency photo.
Span 4 Between Girders 4&5 Bent 4 Concrete Cap has a 3ft. X 2ft. X 3in. deep spall with exposed rebar, see 2015 deficiency photo.
Bottom of Concrete Cap Bent 4 between Piles 4&5 has a 3ft. X 1ft. X 3in. deep spall with exposed rebar, see 2015 photo.
Left side of Span 6 side of Bent 6 Cap is spalled near bearing with rebar exposed, see 2016 photo.
Span 7 side at Bearing 2 of Concrete Cap Bent 7 has a 3ft X 1ft X 3inch deep spall with exposed rebar; see 2016 photo – Also, Top of Cap has deterioration between Girders 1&2, up to 2in. deep.
Top & Bottom of Concrete Cap Bent 8 has heavy deterioration especially at bearings 2&3, see 2015 photo.

Work Description:

Date Repairs Completed:

Maintenance Comments:

bridge crew is evaluating caps and beams to schedule repairs

Stage: Open



PHOTO 1 Description

Stage: Open



PHOTO 2 Description

Inspector:

Inspection Date:

Structure Number: 02881

Facility Carried: SH 77-02- LM 6.34

Bridge Inspection Report

Maintenance Needs

Stage: Open



PHOTO 3 Description

Stage: Open



PHOTO 4 Description

Stage: Open



PHOTO 5 Description

Stage: Open



PHOTO 6 Description

Inspector:

Inspection Date:

Structure Number: 02881

Facility Carried: SH 77-02- LM 6.34

Bridge Inspection Report

Maintenance Needs

Stage: Open



PHOTO 7 Description

Inspector:

Structure Number: 02881

Inspection Date:

Facility Carried: SH 77-02- LM 6.34

Bridge Inspection Report

Maintenance Needs

Date Reported: 10/11/2016

Priority: B - Pressing; 6 month completion goal

Work Code:

Deficiency Description:

Spans 2&3 side of Bent 3 Concrete Cap under the right side of Bearing 3 has a 3in. deep void on top of cap & under bearing, see 2016 photo.

Span 3 side under Bearing 3 Bent 4 Concrete Cap has a 2.5ft. X 1ft. X 6in. deep spall with 40% loss of bearing area, see 2016 photo.

Right End of Bottom of Concrete Cap Bent 6 at Pile 5 has a 4ft. X 1ft. X 3in. deep spall with exposed rebar, see 2015 photo.

Top of Concrete Cap Bent 6 & between Girders 3&5 has moderate deterioration of up to 3 inches deep with section loss & rebar exposed with 30% of loss of bearing Spans 5&6 Girder 5, (water retention on top of Cap), See 2016 photo.

Work Description:

Date Repairs Completed:

Maintenance Comments:

bridge crew is review caps and beams to schedule repairs

Stage: Open



PHOTO 1 Description

Stage: Open



PHOTO 2 Description

Inspector:

Structure Number: 02881

Inspection Date:

Facility Carried: SH 77-02- LM 6.34

Bridge Inspection Report

Maintenance Needs

Date Reported: 10/11/2016

Priority: G - General/ Preventive maintenance

Work Code:

Deficiency Description:

Concrete Curbs have some abrasive wear, deterioration in some areas with section loss and some cracking.

Work Description:

Date Repairs Completed:

Maintenance Comments:
