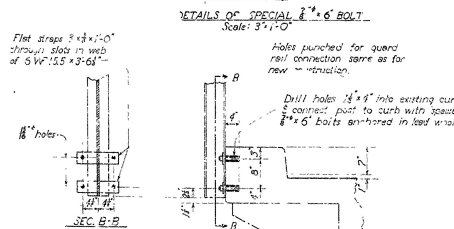


PA. 11 SECTION A-A SHOWING NEW CONSTRUCTION  
(NORTH SIDE ONLY)  
Scale: 1"=1'-0"



DETAILS OF POST CONNECTION TO EXISTING STRUCTURE  
Scale:  $\frac{1}{4}$ " = 1'-0"

----- NOTES -----  
All concrete to be Class "S" and poured in the dry.  
Dowel existing steel, exposed by cutting away process, into new construction, tying new steel to old steel where possible.  
For additional General Notes see Drawings No. 8419

DETAILS OF WIDENING  
SUPERSTRUCTURE OF BRIDGE  
OVER EAST FORK-WEST SUGAR LOAF CREEK  
BERGMAN - LEAD HILL  
ROONE COUNTY  
27-54 Keyway ROUTE 43 SEC 3

ROUTE 43 SEC. 3  
ARKANSAS STATE HIGHWAY COMMISSION  
LITTLE ROCK, ARK.  
Drawn By: J.H.L. Date: 12-15-53  
Traced By: Date: Scale: As Noted  
Checked By: Date: 1-5-54  
BRIDGE NO. 1396 DRAWING NO. 8420

